



G R E A T E R   S A L T   L A K E

# Municipal Services District



Tree Damage at Salt Lake County Building



## Emergency Management Update

July 12, 2023

# Emergency Response Planning

---

## Overview

- On Nov 13, 2019, the MSD Board of Trustees authorized the General Manager of the MSD to sign a municipal emergency management service and reimbursement agreement with the Unified Fire Authority (UFA). As a result, two emergency management specialists were hired to provide weekly planning and training services



G R E A T E R   S A L T   L A K E

**Municipal Services**  
**District**

## Emergency Plan Development

- MSD
  - Emergency Operations Plan (EOP)
  - Continuity of Operations Plan (COOP)
- Members
  - Adoption of the MSD EOP
  - Community Wildfire Protection Plan
  - COOP
  - Adoption of County Hazard Mitigation Plan
  - Emergency Response Plan (Brighton)
  - Emergency Communications Plan (Brighton, Kearns, White City)
- Comprehensive Emergency Management Plan (CEMP) development

# Emergency Response Planning

---

## Training/Exercising

- MSD
  - SLCo Local CEMP Tabletop (Nov 2022)
  - COOP Training (Feb 2023)
  - FEMA L102, Science of Disaster (Feb 2023)
  - FEMA NIMS IS & Professional Development Courses (Ongoing)
  - CPR Training (Jan-Mar 2023)



G R E A T E R   S A L T   L A K E

**Municipal Services**  
**District**

## Training/Exercising

- MSD (continued)
  - WebEOC (Ongoing)
  - Emergency Coordination Center (ECC) set up training (Mar 2023)
  - ATC-20, Post-earthquake Safety Evaluation of Buildings (Apr 2022 & beyond)
  - FEMA ICS-300, Intermediate All-Hazards NIMS for Expanding Incidents (Jul 2023)
  - FEMA G-318, Local Hazard Mitigation Planning (Aug 2023)
  - WebEOC table top with SLCo EM (late 2023)
- Members
  - FEMA G-402, ICS Overview for Executives & Senior Officials (Nov & Dec 2022)
  - Joint training with MSD staff

# Emergency Response Planning

---

## Recurring Meetings

- Salt Lake Valley Emergency Manager Group Meeting—2<sup>nd</sup> Monday of each month. Provides updates on valley-wide emergency management issues, trainings, events, exercises, etc.
- Weekly Emergency Management Brief—Each Tuesday morning. Brief call provides any urgent updates as necessary between the monthly group meetings.
- Ongoing updates as needed, such as flooding, bad weather, etc.



G R E A T E R   S A L T   L A K E

**Municipal Services**  
**District**



# Emergency Response Planning

---

## 2023 Spring Runoff

- Sandbags made available for residents. Locations for sand and bags found at: <https://slcoem.org/sandbag-locations/>
- Municipalities could order sand and bags for community preparation events.
- Information from SLCo Emergency Management on flood monitoring and preparations posted online at: <https://slcoem.org/emergency/flooding-spring-runoff/>
  - Volunteers can register to serve, or volunteers can be requested.
- Maps to identify property in relation to the floodplain.
- Contact information provide as follows: If you see debris blocking a river, creek, stream or canal, contact SLCo Flood Control at 385-468-6600; if flooding on a roadway or storm drain, call 385-468-6101.



# Emergency Response Planning

## Emergency Manager Designation

- HB96 in 2021 requires that each jurisdiction designate an emergency manager.

Jurisdiction	Assigned Emergency Planner	Designated Emergency Manager*
Copperton	Jim Woodward	Mayor Clayton
White City	Jim Woodward	Rori Andreason
Emigration Canyon	Jim Woodward	Mayor Smolka
Kearns	Brad Jewett	Mayor Bush
Magna	Jim Woodward	Councilmember Pierce
Unincorporated SLCo	Jim Woodward	Mayor Designee
MSD	Jim Woodward	N/A
Town of Brighton	Jim Woodward	Jane Martain
<b>Total Monthly Cost</b>		



# Emergency Resource Coordination Chart

## Personnel Assignments

### SLCo ECC

MSD General Manager or Designee (Ops Room Municipal Coordination area of ECC)

### MSD Office

- MSD Personnel as assigned by General Manager

### Local Policy Group

- Mayor
- UPD
- UFA
- Jurisdiction Emergency Manager(s)

## Agency

Salt Lake County  
Emergency Coordination  
Center (ECC)

MSD  
Emergency Coordination  
Center

Other incorporated cities  
in SLCo

Other incorporated cities  
in SLCo

Brighton

Copperton

Emigration

Kearns

Magna

Unincorporated  
Salt Lake County

White City

## Key Tasks

### SLCo ECC

Accesses resources upon request of MSD when MSD capacity exceeded.

### MSD Office

Receives reports and requests from members and deploys MSD services or elevates requests to SLCo ECC

### Local Policy Group

- Initiates reports and resource requests for municipal services that are sent to MSD ECC
- Requests to UPD and UFA are made through existing channels.

# Emergency Response Planning

---

## Duty Officer

- MSD Duty Officer Assigned Weekly Rotation; serves as first level of response by the MSD. Comprised of:
  - General Manager
  - Associate General Manager
  - Director of Planning & Development
  - Grading, Floodplain & Stormwater Manager
  - Chief Building Official



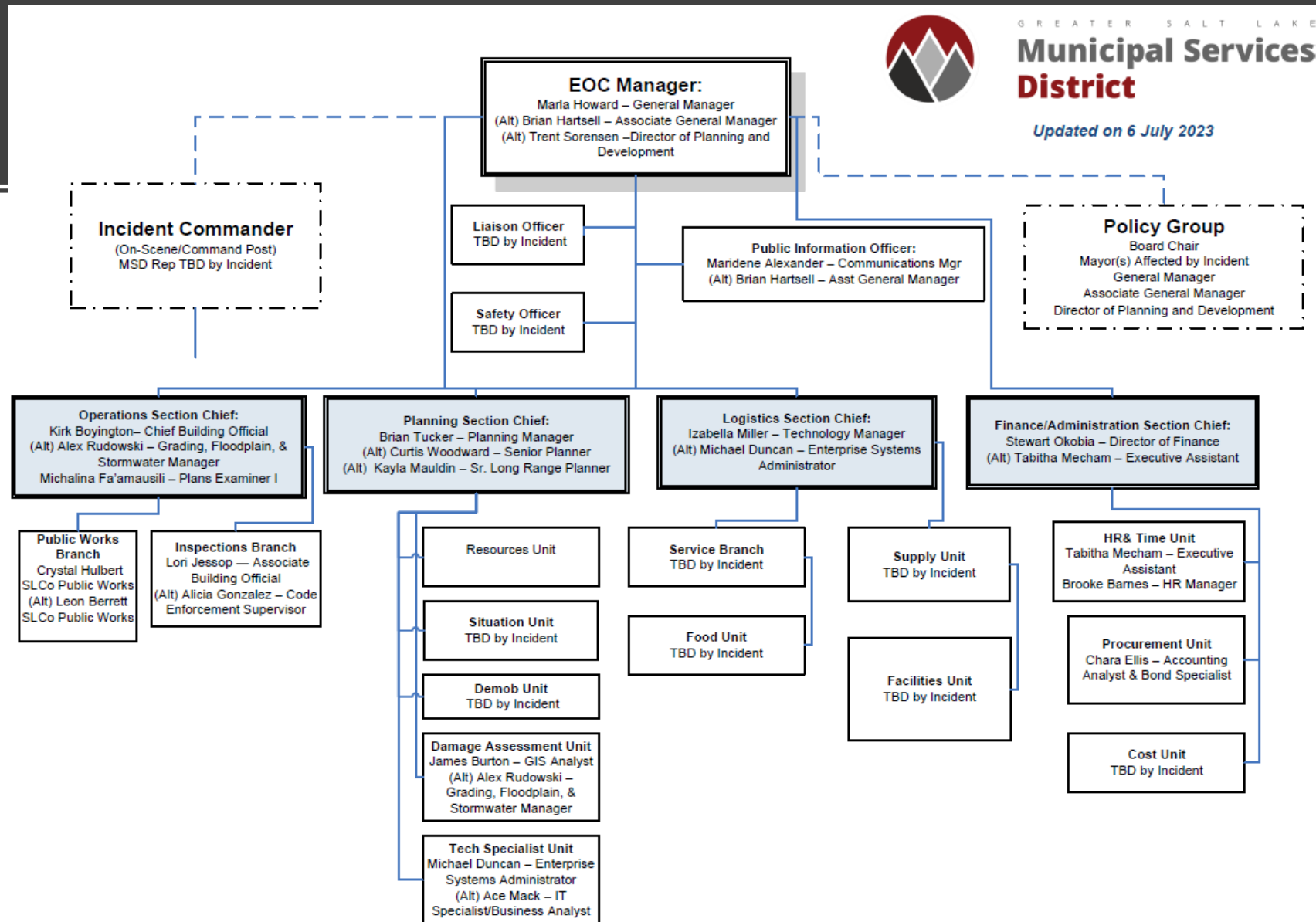
G R E A T E R   S A L T   L A K E

**Municipal Services**  
**District**

## Training/Exercising

- The MSD will establish a single Duty Officer phone number for Emergency Managers & Mayors to contact.
- Based on information provided, determination to activate the MSD Emergency Coordination Center (ECC). Determination will be made in consultation with the MSD Policy Group:
  - General Manager
  - Associate General Manager
  - MSD Board Chair
  - Mayor of affected municipality
  - Emergency Manager of affected municipality
- As necessary, MSD will in-turn notify the SLCo ECC Duty Officer at 801-896-7526.

# MSD ECC Organization Chart





Website: [msd.utah.gov](http://msd.utah.gov)