



LEGEND	
	Area of Detail
	Point of Connection
	New Transformer
	EV Charging Support Equipment
	Conduit
	EV Charger (Dispenser if Modular DC)
	EV-designated Stall
	Accessible EV Stall
	Path of Travel
	Property Line Approx
	Future Expansion Potential

KEYED NOTES	
A	Area of detail
B	3ph Utility Poles
C	
D	
E	
F	

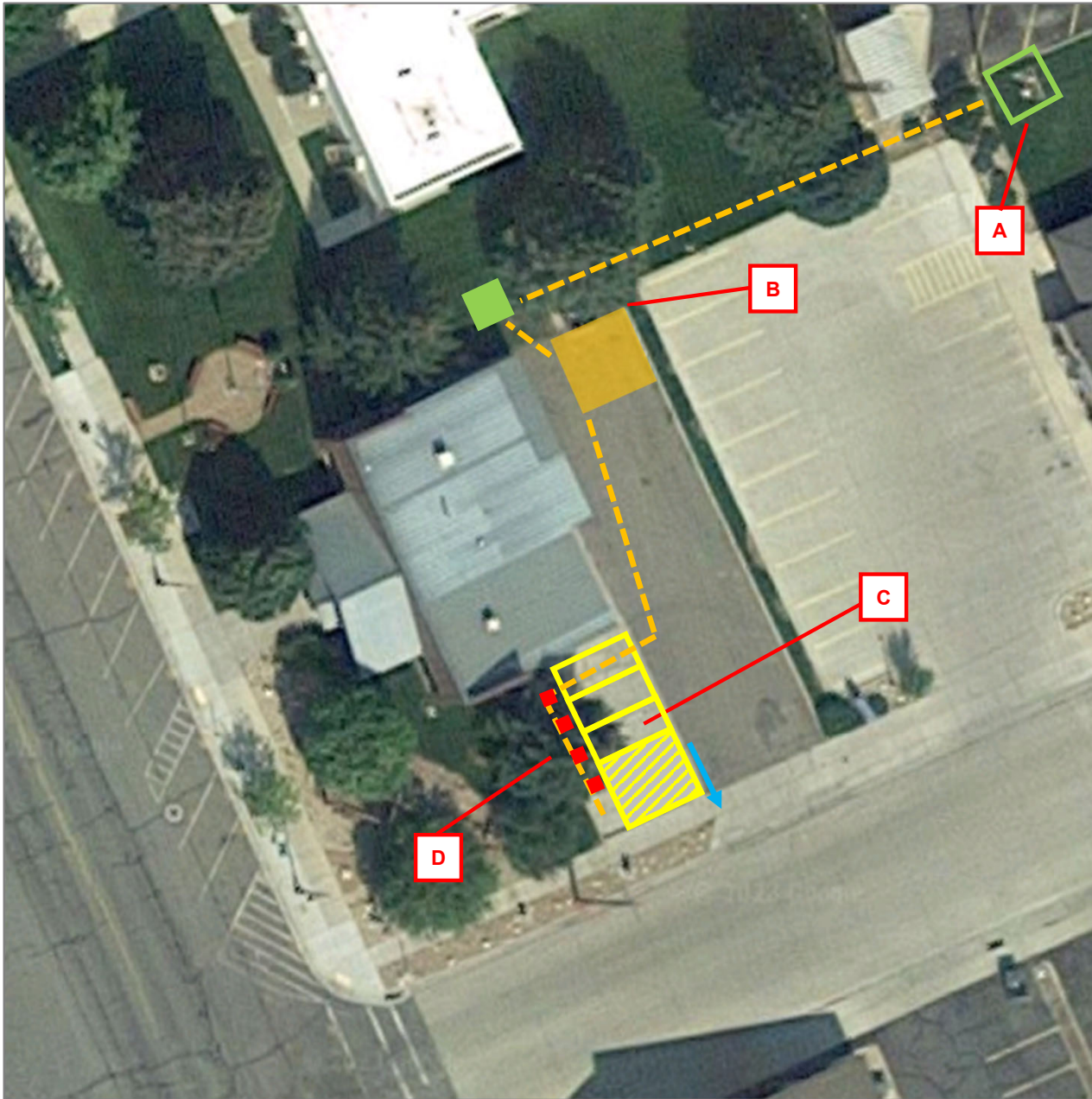
CONCEPTUAL LAYOUT ONLY – NON-ENGINEERED

COALVILLE CITY HALL

COALVILLE CITY  
 9 S MAIN ST  
 COALVILLE, UT 84017

SHEET 1 – AREA MAP  
 V1 4/27/2023





LEGEND	
	Area of Detail
	Point of Connection
	New Transformer
	EV Charging Support Equipment
	Conduit
	EV Charger (Dispenser if Modular DC)
	EV-designated Stall
	Accessible EV Stall
	Path of Travel
	Property Line Approx
	Future Expansion Potential

KEYED NOTES	
A	3ph Pole
B	Equipment in dead end of parking lot, consider square vs long-skinny pad
C	Concrete parking area 25' deep x 44.5' wide. Consider dispensers in end of concrete area, pushing parking stalls back. Width is very tight, but could just fit with 9' wide standard stalls (shown).
D	Mature tree
	No room for expansion

CONCEPTUAL LAYOUT ONLY – NON-ENGINEERED

COALVILLE CITY HALL

COALVILLE CITY  
9 S MAIN ST  
COALVILLE, UT 84017

SHEET 2 – DETAIL  
V1-Opt A      4/27/2023





LEGEND	
	Area of Detail
	Point of Connection
	New Transformer
	EV Charging Support Equipment
	Conduit
	EV Charger (Dispenser if Modular DC)
	EV-designated Stall
	Accessible EV Stall
	Path of Travel
	Property Line Approx
	Future Expansion Potential

KEYED NOTES	
A	3ph Pole
B	Will require working around monument and trees
C	Will require working around / reconfiguring trees and light poles in sidewalk

CONCEPTUAL LAYOUT ONLY – NON-ENGINEERED

COALVILLE CITY HALL

COALVILLE CITY  
 9 S MAIN ST  
 COALVILLE, UT 84017

SHEET 2 – DETAIL  
 V1-Opt B      4/27/2023

