



UTAH INLAND PORT AUTHORITY

Spanish Fork City Council
Tuesday, May 2nd, 2023
UIPA Executive Director

WHY UTAH NEEDS AN INLAND PORT

Three Primary Goals:

- 1. Create efficient global cargo flow through Inland Port Facilities*
- 2. Synergize Investments to Grow Regional Economies, with Sustainable Growth*
- 3. Strengthen Utah's Shipping Industry*



Partnerships and Collaboration – Focused Support



UTAH INLAND
PORT AUTHORITY

Port Facilities and Infrastructure

Example:

Inland Port - Dillon, South Carolina



Photo: <https://www.transystems.com/our-projects/inland-port-dillon/>

Port Facilities and Infrastructure

Example:
Pocatello Rail Facility



Photo Courtesy of Savage

Port Facilities and Infrastructure

Air Freight

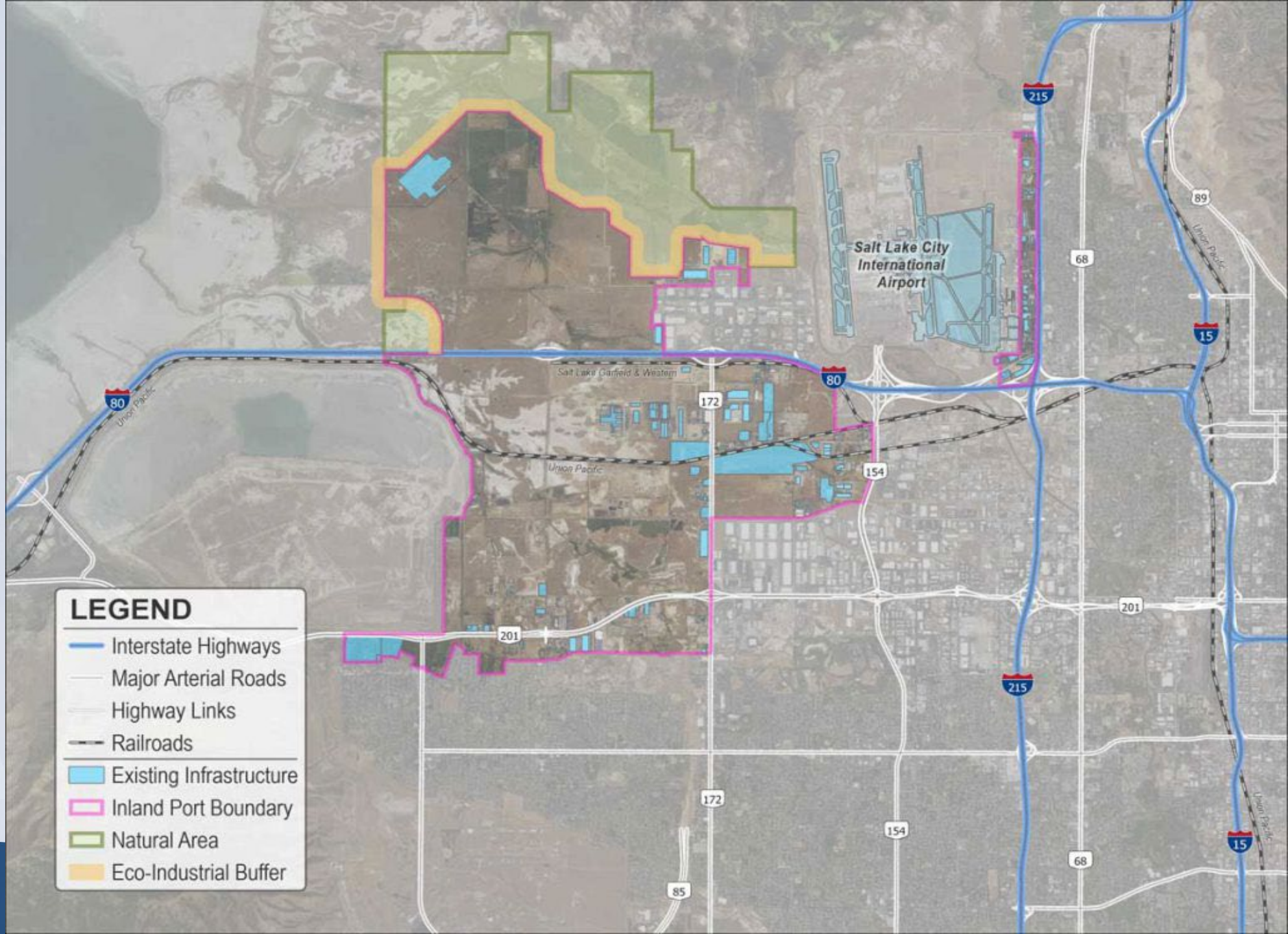


Photo: Deseret.com

Project Areas and Economic Growth:

Building Regional Economies with Strategic Investments

Example – NWQ:
Biotech
Aerospace
Green Tech
Tech Manufacturing



Inland Port Authority Tool-Box

- Project Area Creation
- Rail and Logistics Development Support
- Public Financing Options for Public Infrastructure, Including P3, Grants and PID Support
- Infrastructure Bank and Public Financing
- Regional Promotion for Inland Ports, with Volume Data
- Branding/Business Expansion
- Oversight and Compliance for Tax Differential Community Reinvestment
- Federal and Customs Interface
- International Shipping Connections
- Sustainability Support and Potential Funding



UTAH INLAND
PORT AUTHORITY

HOW DOES THE PROCESS WORK

Phase 1

Set up

1. Meet with local officials - Resolution
2. Draft Project Area Plan and Budget
3. AIB Loan Application
4. Public Meetings
5. Adoption

Phase 2

Implementation

1. Start Port Facility
2. Implement support for Project Area Plan and Budget
3. Contracts for Tax Differential
4. Any other Implementation needed
5. Identify regional partnerships

Phase 3

Long-Term Optimization

1. Marketing/Branding/Recruitment
2. Operational Support
3. Economic Initiatives in concert with local officials



UTAH INLAND
PORT AUTHORITY

WHERE:

1. Salt Lake City: Northwest Quadrant
2. Iron County: Iron Springs Project Area – Adopted in April
3. Spanish Fork: On Deck
4. Box Elder County: On Deck
5. Beaver County: On Deck
6. Juab/Six County: On Deck
7. Tooele County: On Deck
8. More to come



Strengthen Utah's Shipping Industry:

- Shippers Consortiums for Optimal Shipping
- Identify and Promote Solutions to Barriers to Global Shipping
- Represent the Shipping Industry in Federal, State and Local Policy Discussions
- Promote Utah's Shippers and Facilitate International Partnerships
- Educate Key Stakeholders Regarding Utah's Shipping Industry
- Promote Best Practices and Emerging Trends within the Industry



UTAH INLAND
PORT AUTHORITY



UTAH INLAND
PORT AUTHORITY