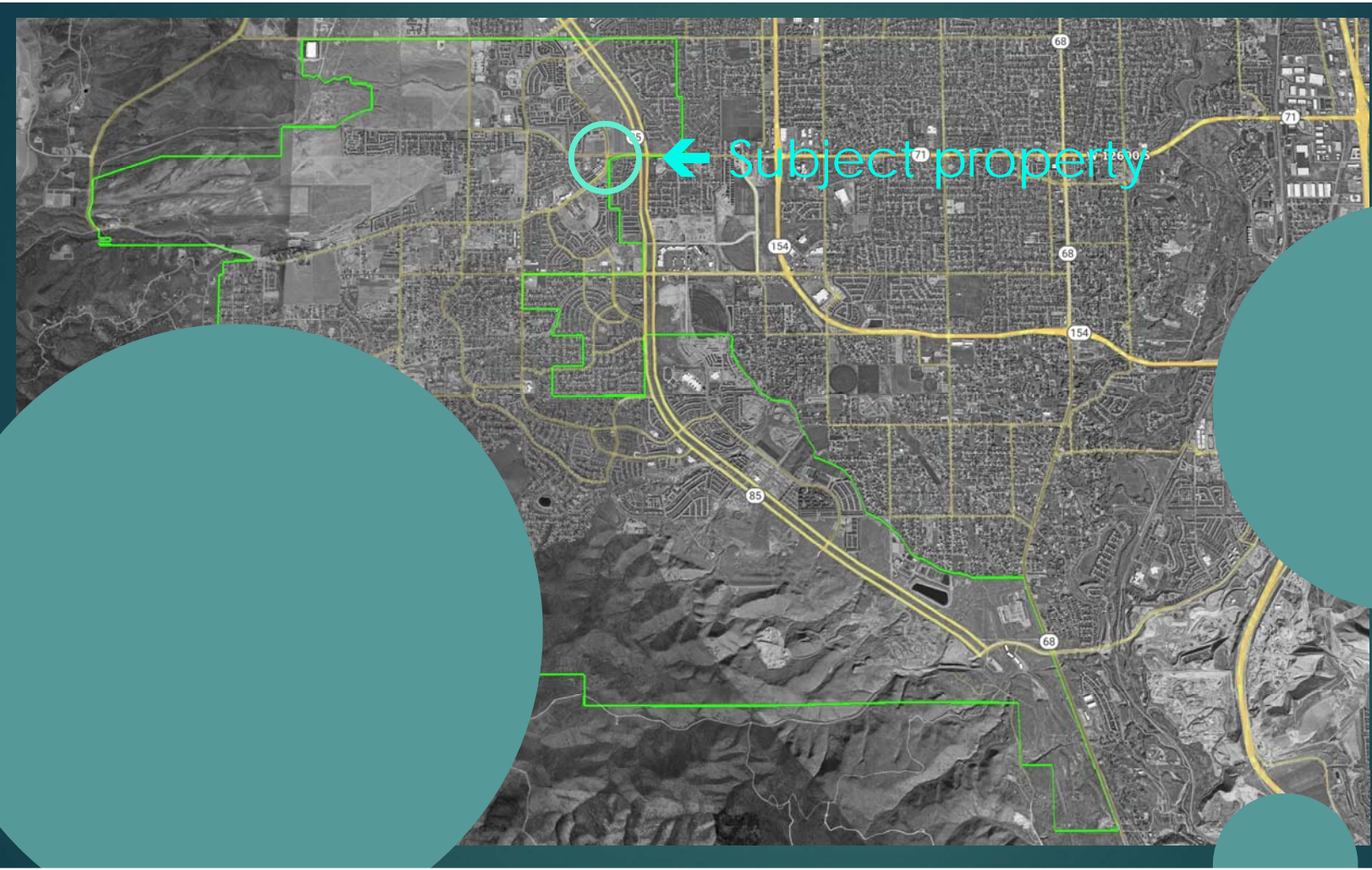


Kum & Go Conditional Use

Planning Commission Meeting

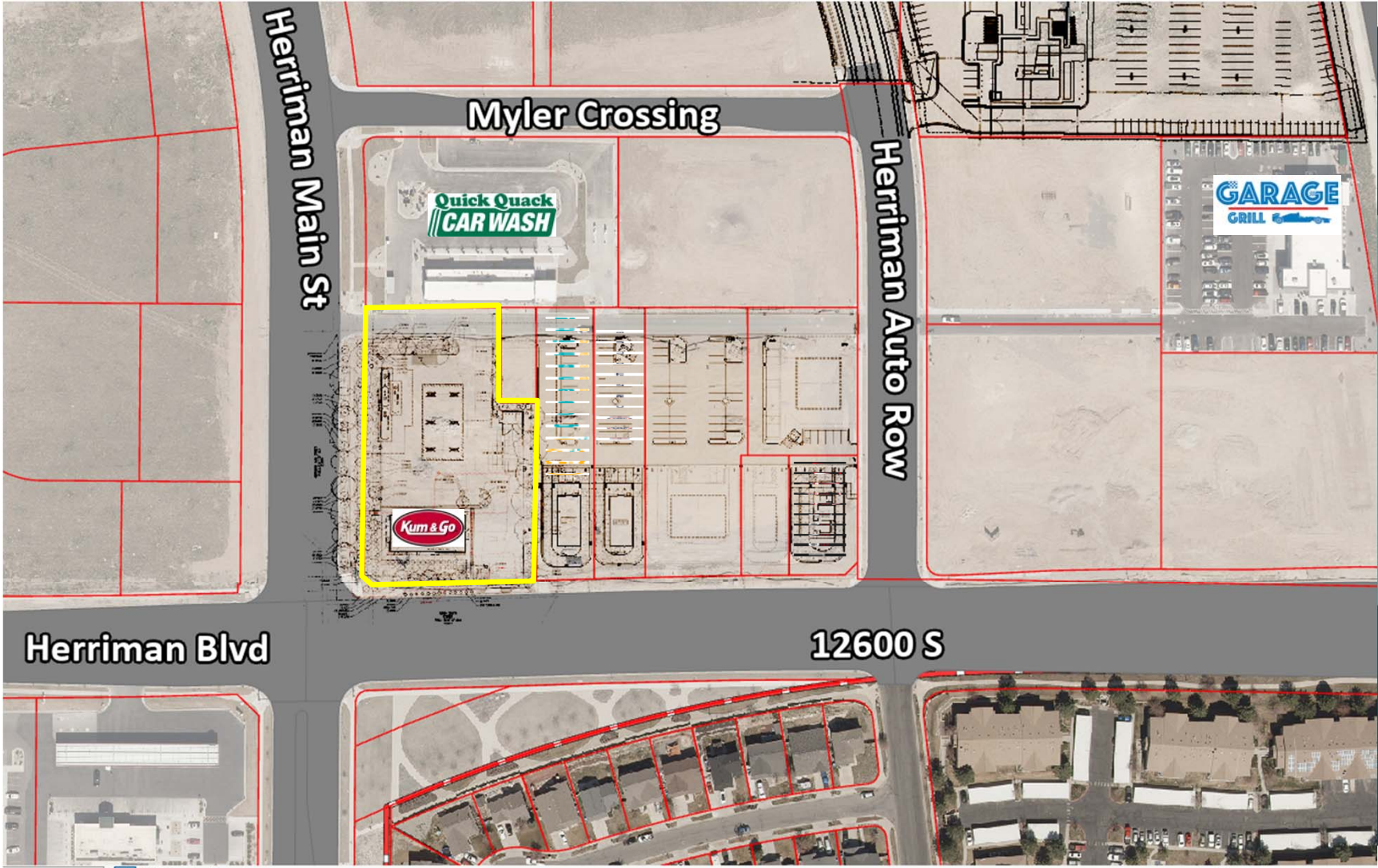
May 3, 2023





Vicinity Map





Vicinity Map

Proposal:

- ▶ New buildings
 - ▶ Store:
 - ▶ 3,597 square feet
 - ▶ 23' tall
 - ▶ Canopy:
 - ▶ 90' x 49'
 - ▶ 6 pump stations
- ▶ Finish materials
 - ▶ Brick/stone
 - ▶ Aluminum accents
 - ▶ Glazing
- ▶ 21 parking stalls
- ▶ 26% landscaping



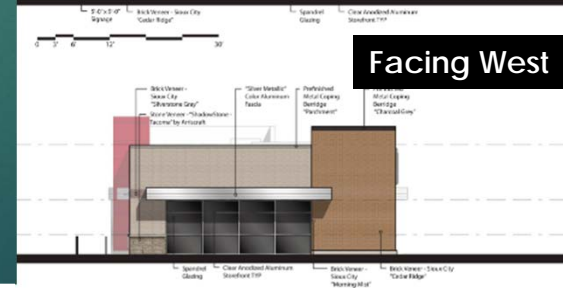
Facing North



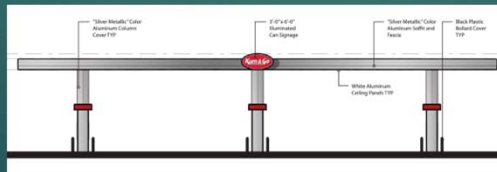
Facing East

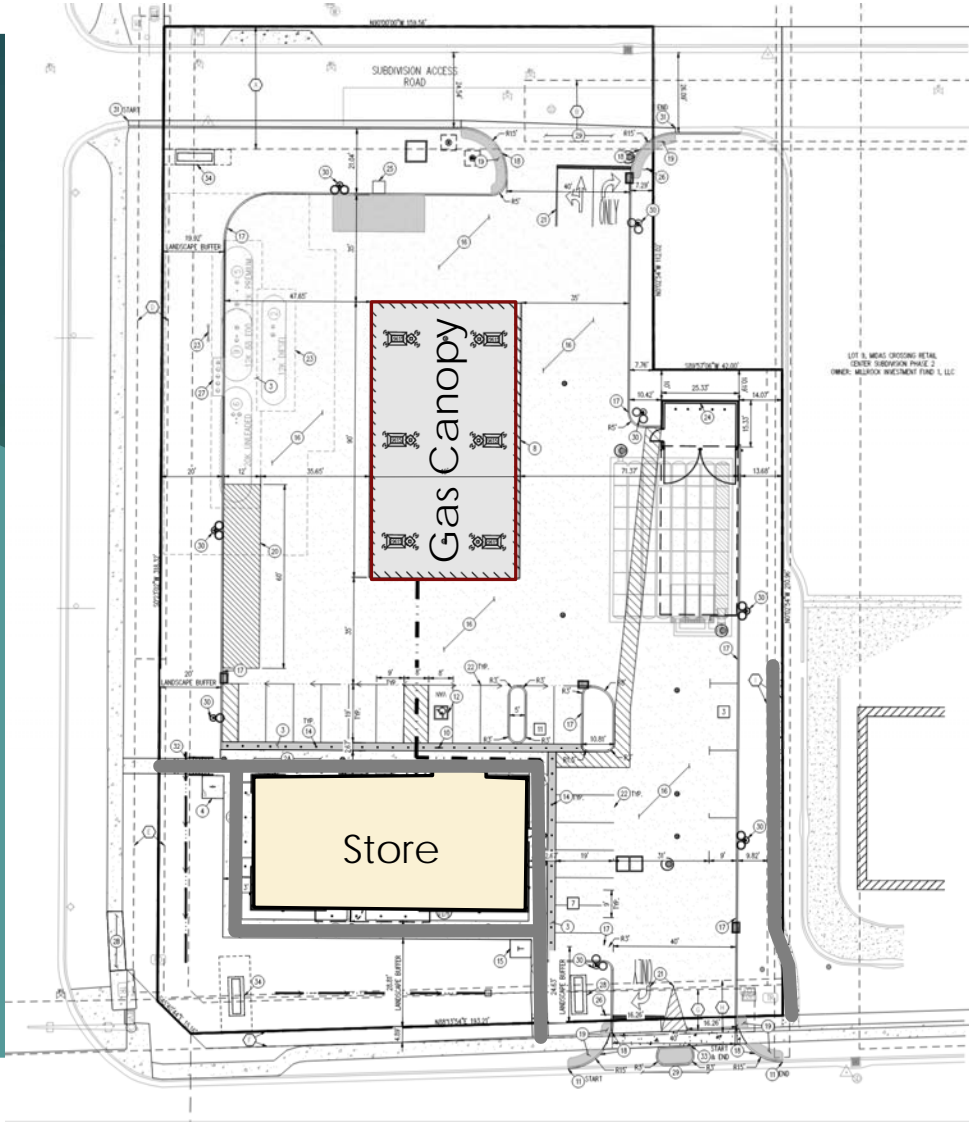


Facing South



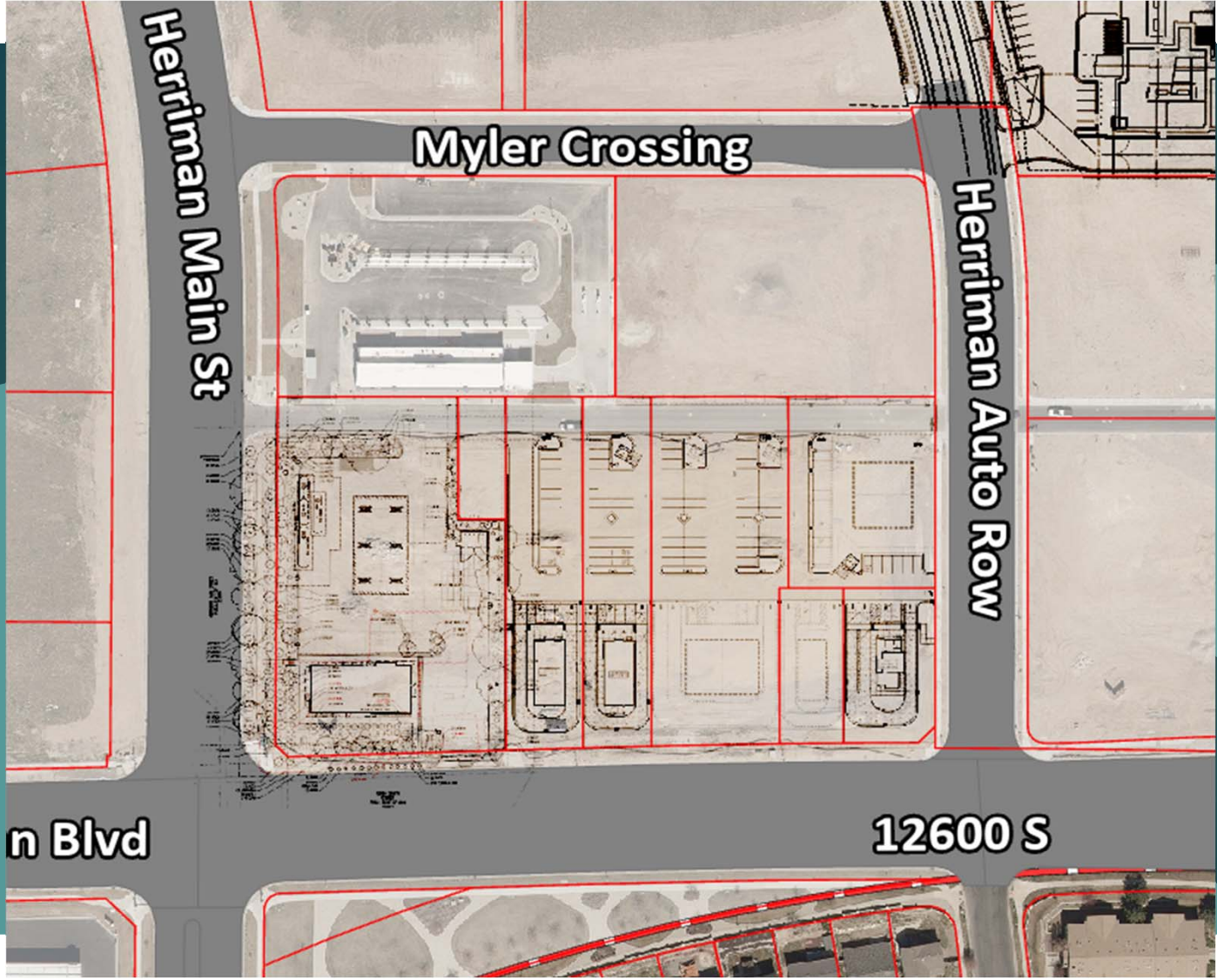
Facing West





Site Plan





Site Plan





Recommendation

► Approval with the following conditions:

1. Complete remaining corrections from City departments
2. Provide sidewalk connection from the store to sidewalk on east side of site with different color/texture
3. No signs are approved with this request