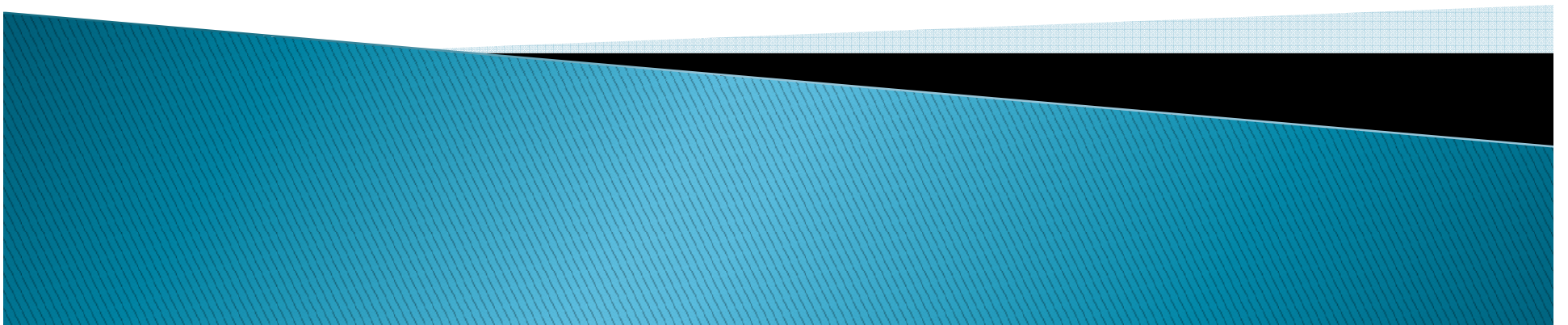
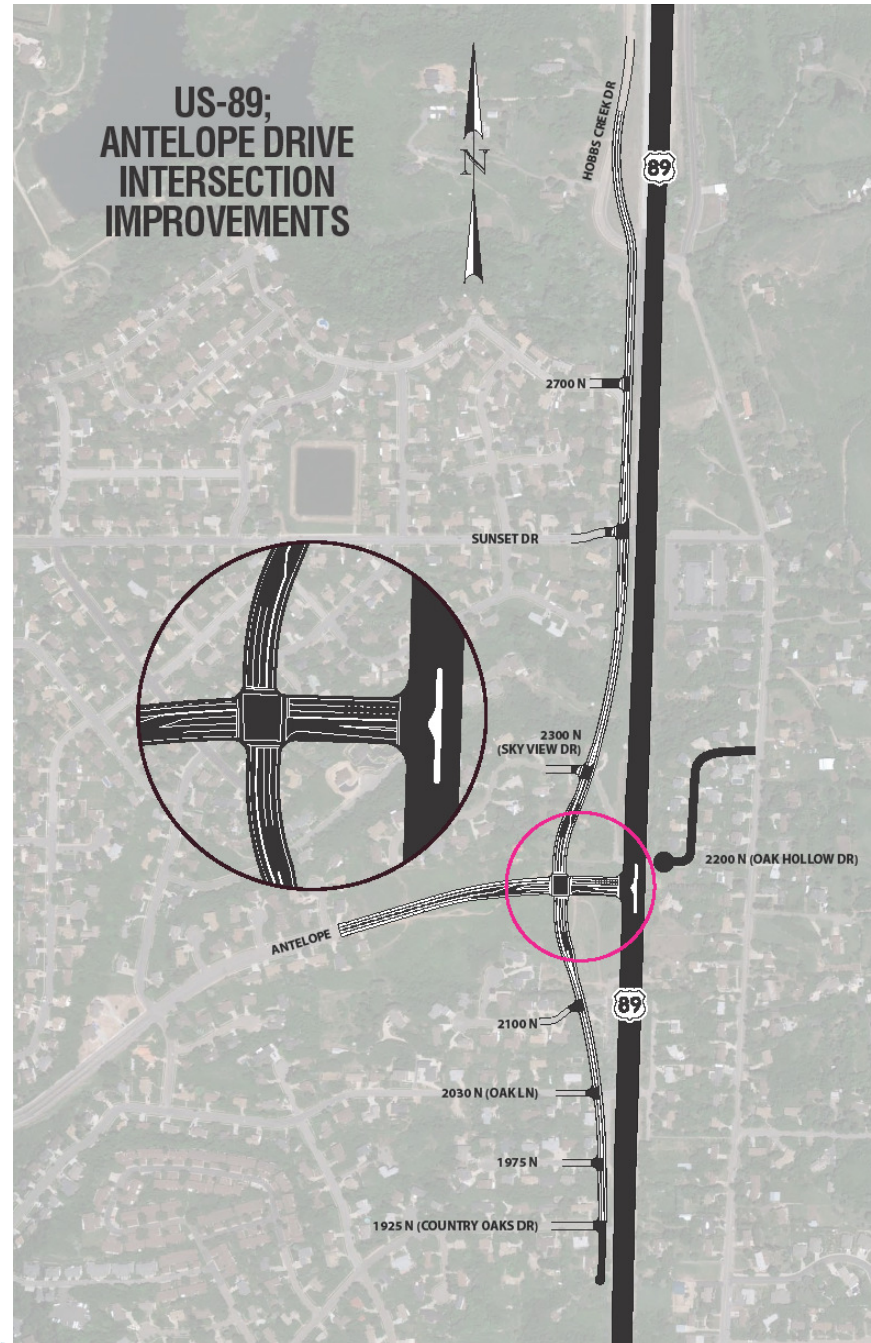


# Proposed Antelope & 89 Park & Ride

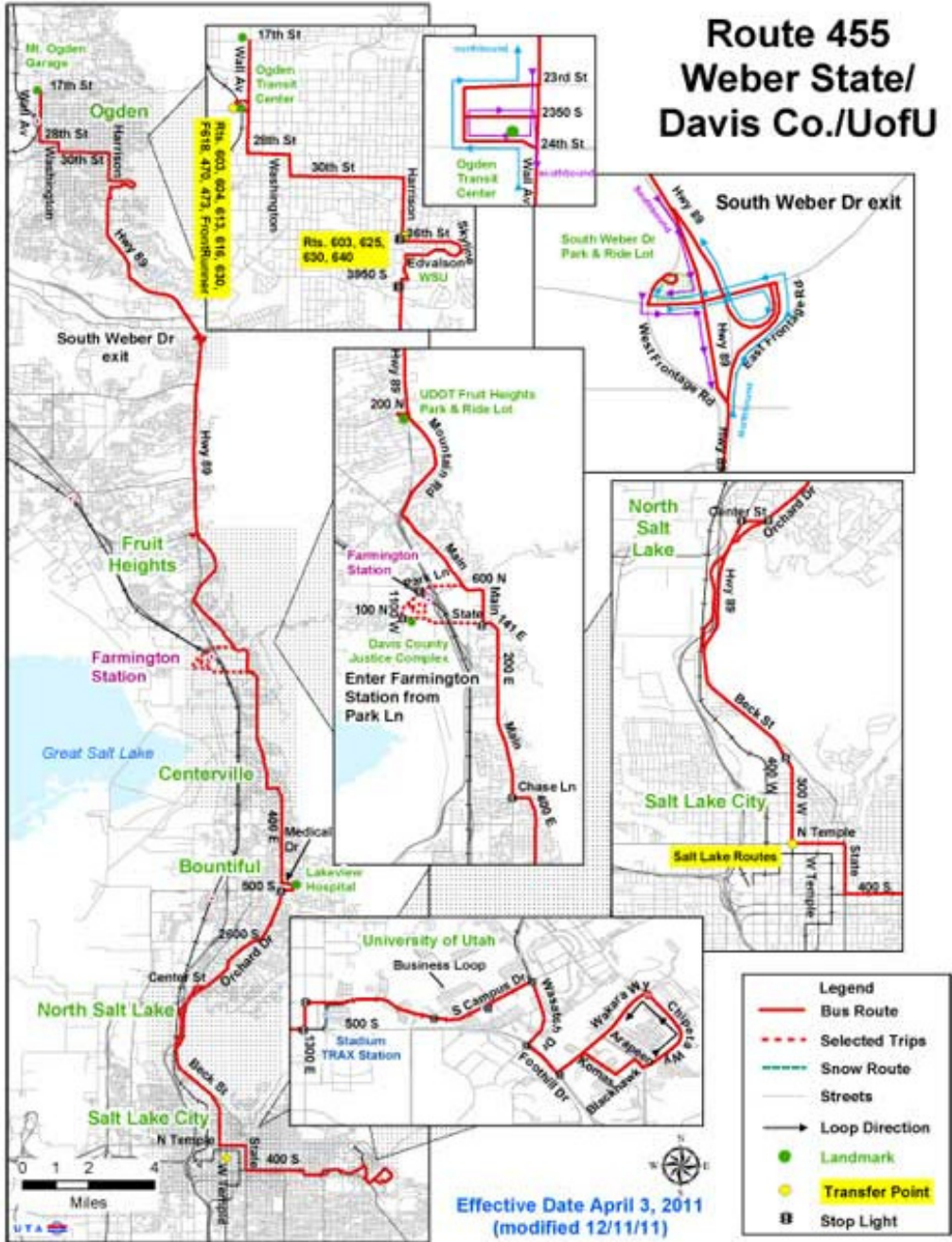


# Antelope & Highway 89 Improvements



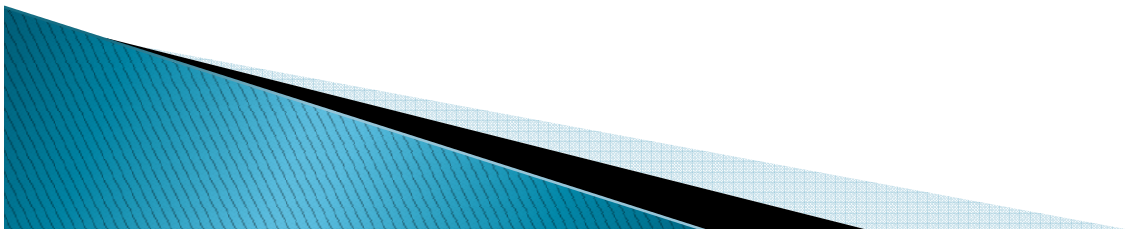
# UTA 455 Weber State/ U of U

## Route 455 Weber State/ Davis Co./UofU

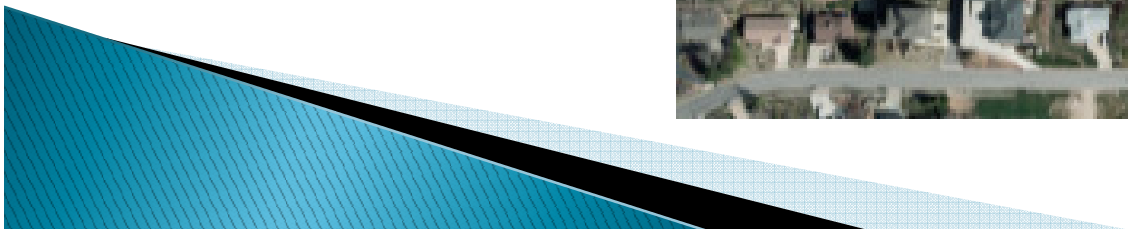
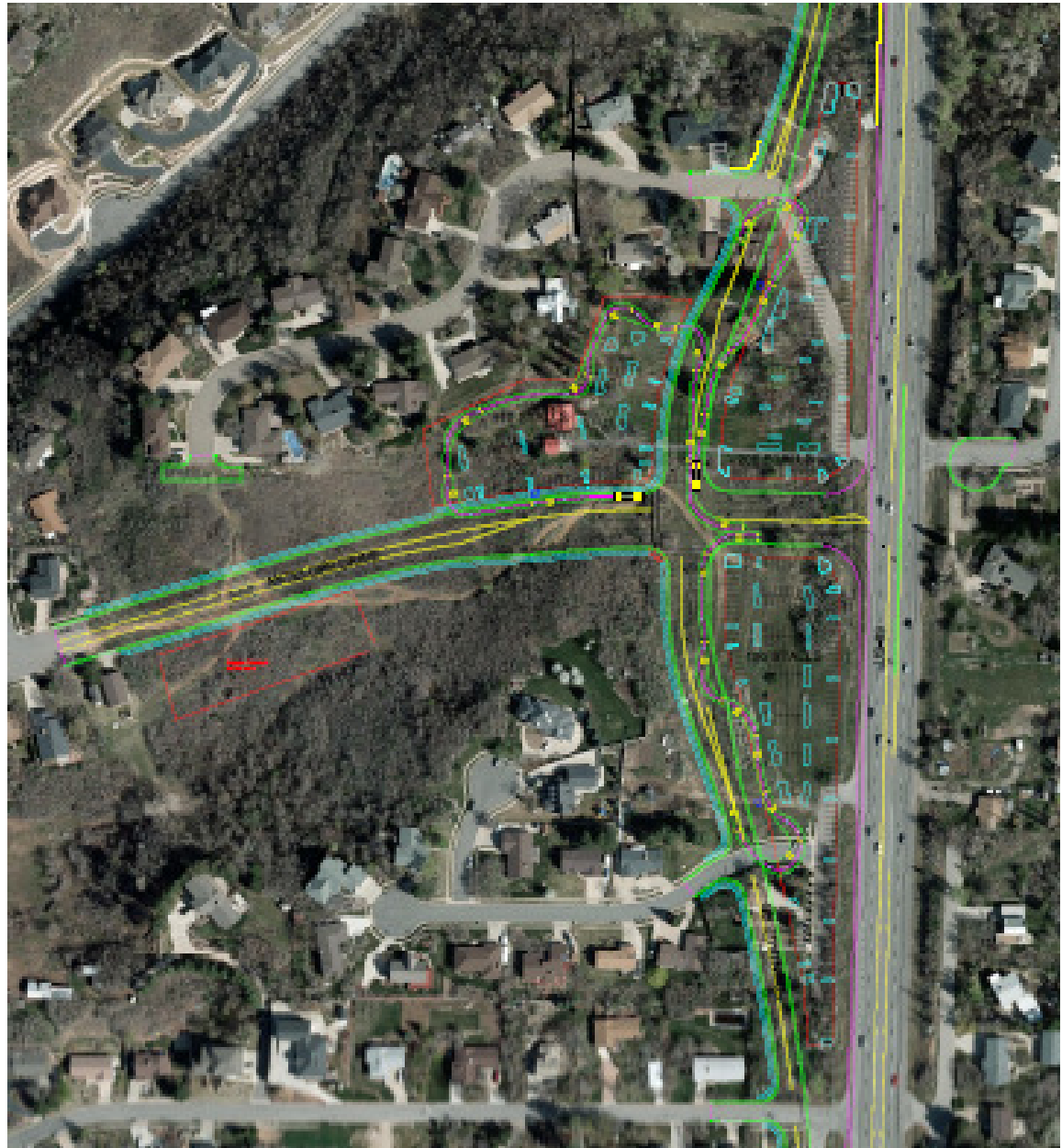


# Criteria to Evaluate Location

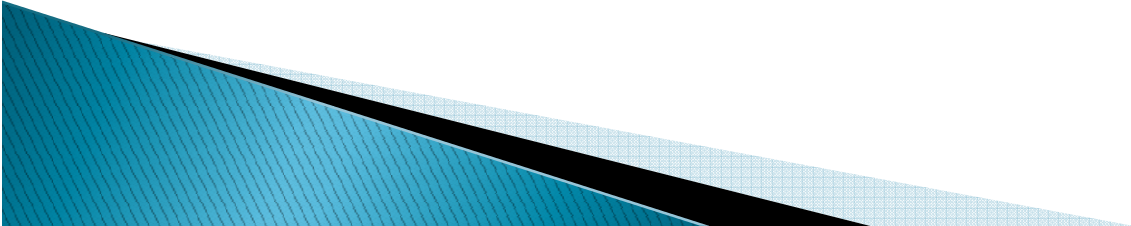
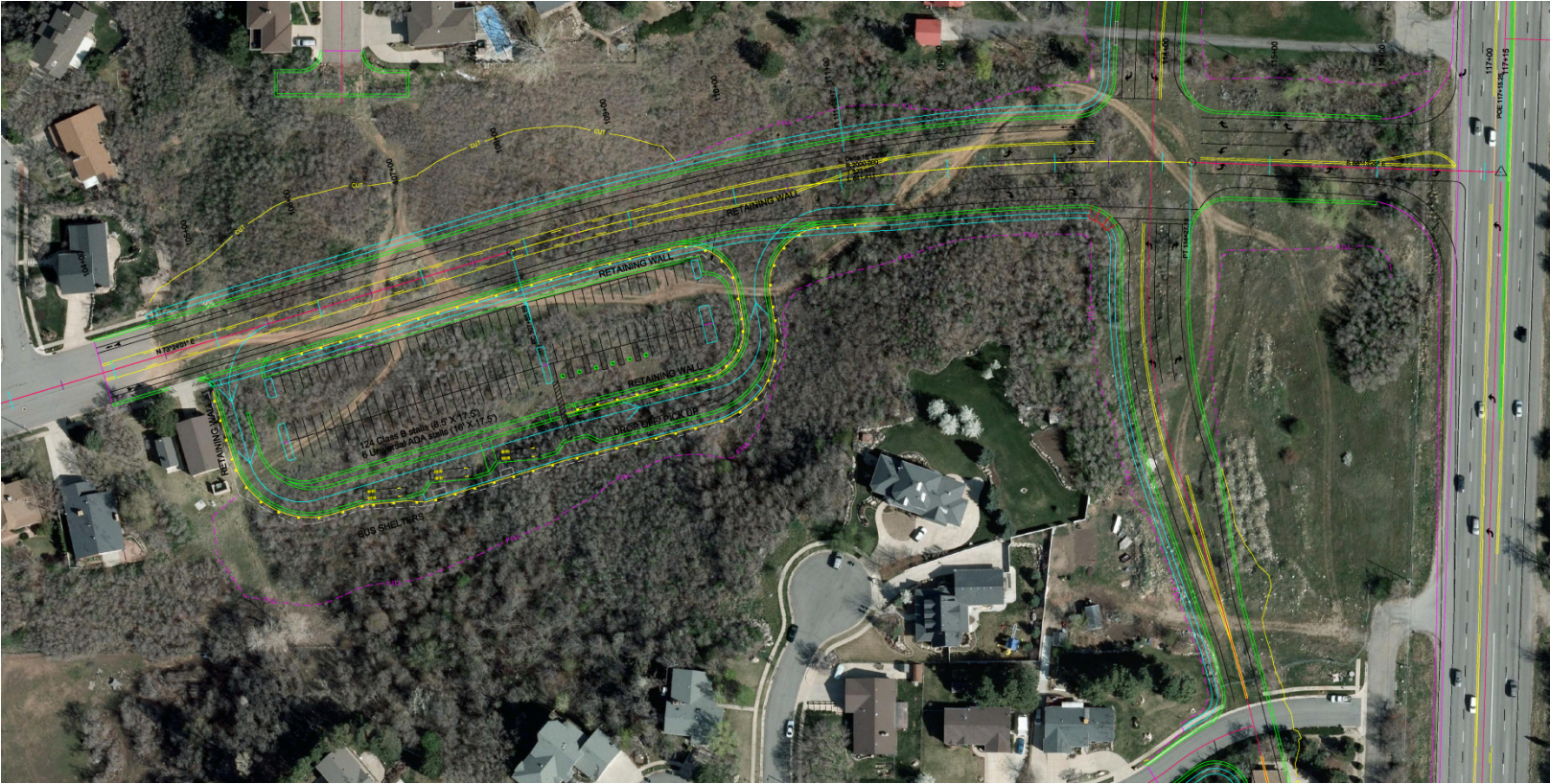
- UTA, UDOT Multi-Modal
  - Time (Seconds)– Meet Operation Schedule
  - 455 Bus Route–
  - Close to Highway 89
  - Safety– Bus Stops Highway 89
  - Located between South Weber & Farmington
  - Located on Arterial Street
  - Bureau of Reclamation 72” water line
- Topography
- Cost
- Impact to Residents

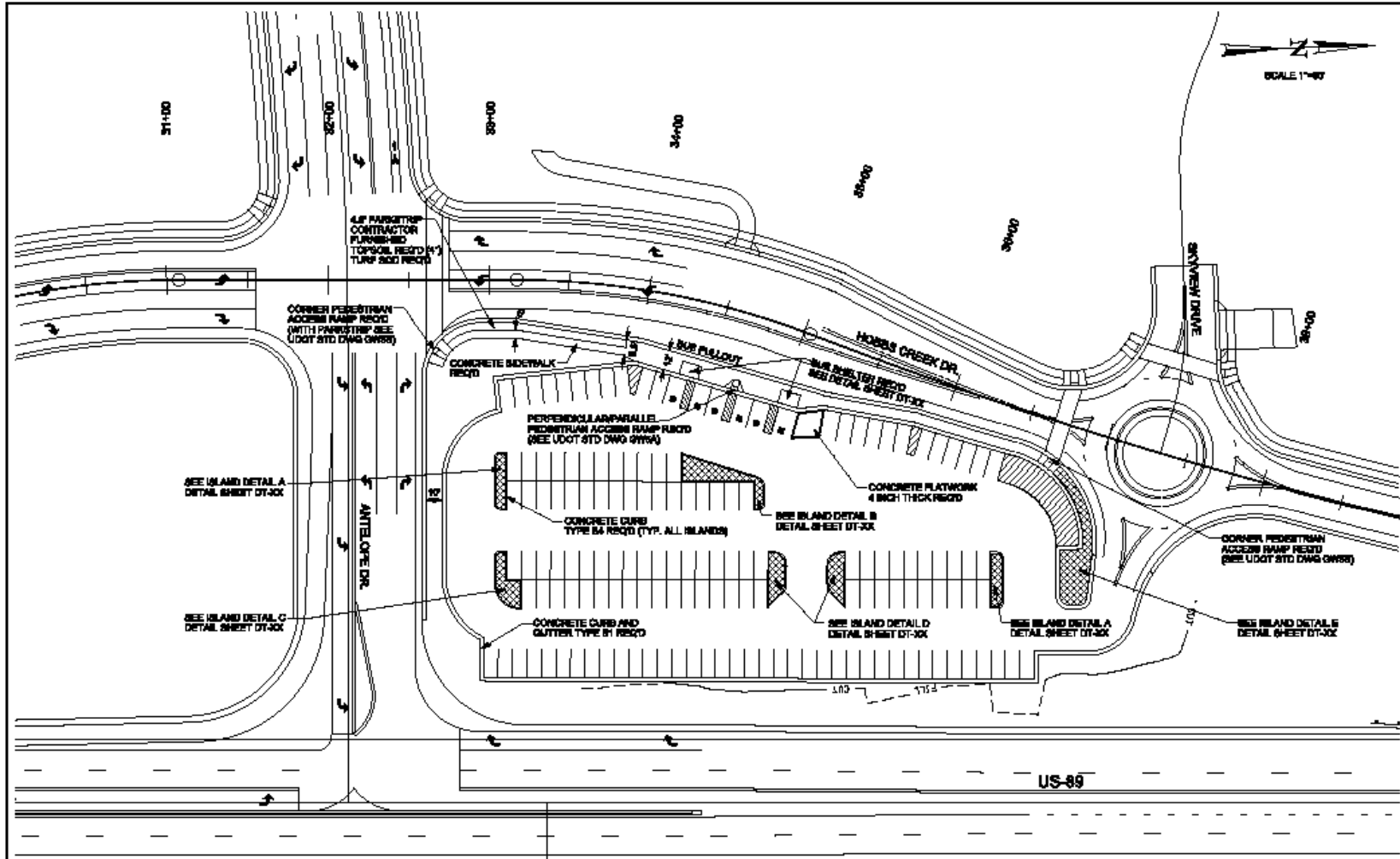


# Park & Ride Options

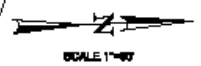


# Park & Ride Options



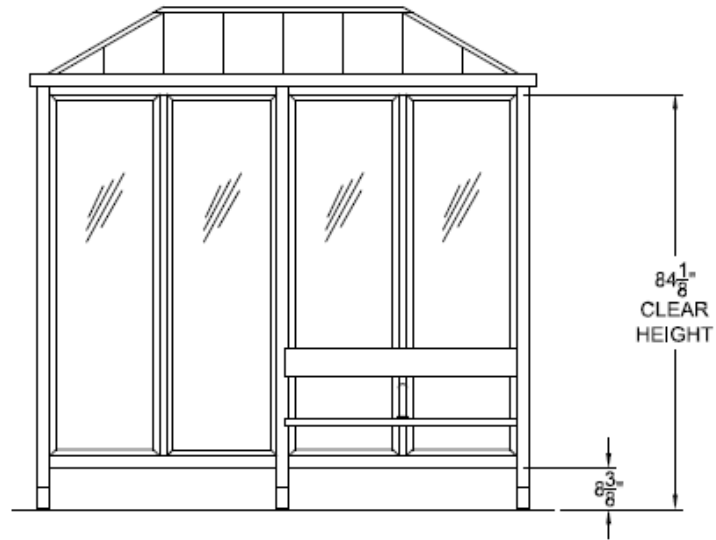


**PRELIMINARY PLANS  
NOT FOR CONSTRUCTION**

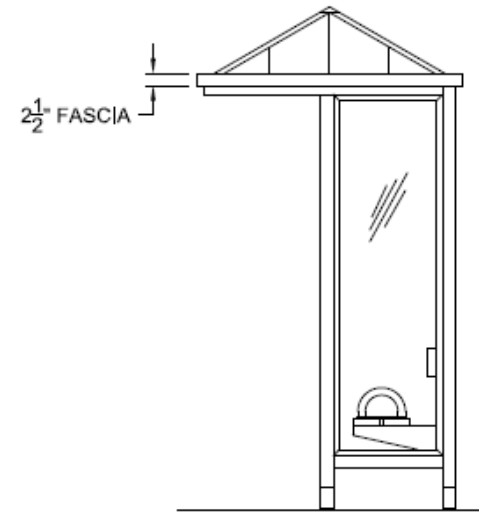


SCALE 1"=40'

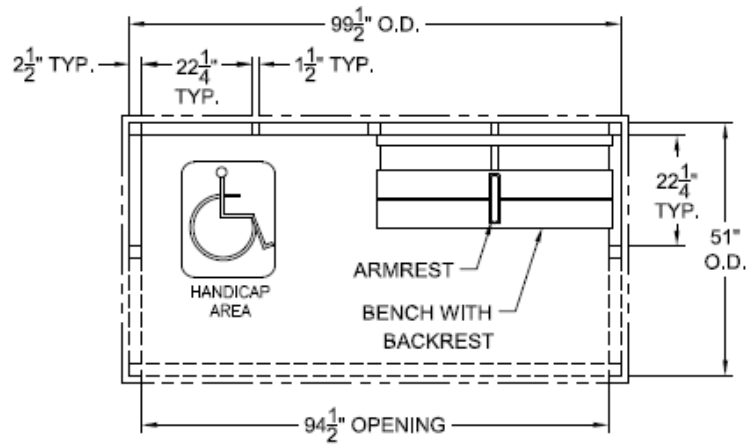
PROJECT: US-89; ANTELOPE DR.		DATE: 11/17/17	
INTERSECTION IMPROVEMENTS		PROJECT NUMBER: 8-0008(34)0402	
PARK & RIDE PLAN		DRAWN BY: [blank]	
APPROVED: [blank]		CHECKED BY: [blank]	
UTAH DEPARTMENT OF TRANSPORTATION		DESIGNED BY: [blank]	
PERKINS ENGINEERING		DATE: 11/20/2015	
[blank]		DRAWN BY: [blank]	
[blank]		CHECKED BY: [blank]	
[blank]		DESIGNED BY: [blank]	
[blank]		DATE: [blank]	
[blank]		DRAWN BY: [blank]	
[blank]		CHECKED BY: [blank]	
[blank]		DESIGNED BY: [blank]	
[blank]		DATE: [blank]	
[blank]		DRAWN BY: [blank]	
[blank]		CHECKED BY: [blank]	
[blank]		DESIGNED BY: [blank]	
[blank]		DATE: [blank]	



**FRONT ELEVATION**

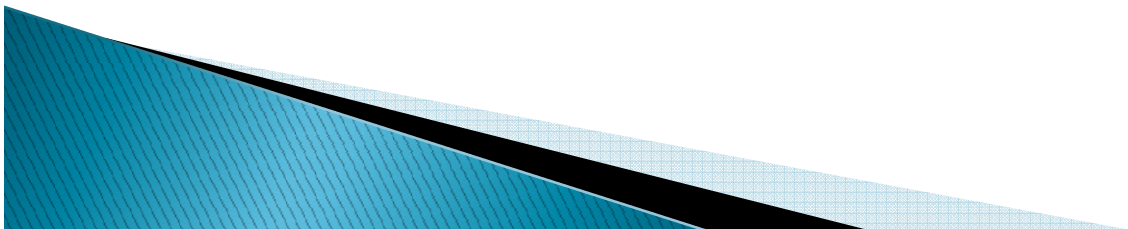


**SIDE ELEVATION**



**PLAN VIEW**

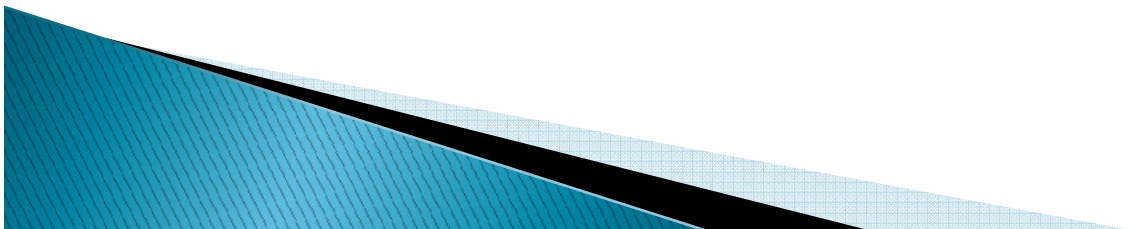
QUANTITY: (5) SHELTERS AS SHOWN





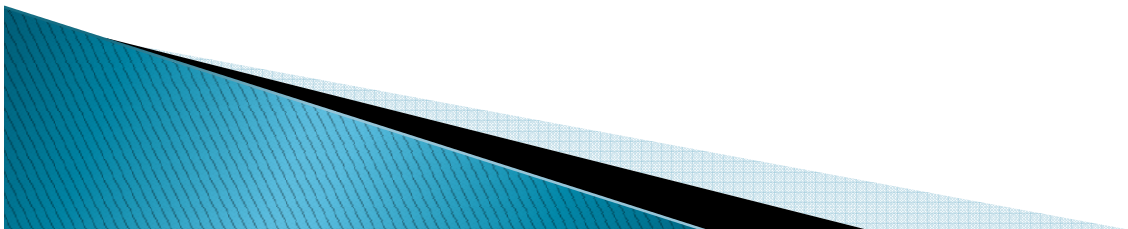
# Criteria to Evaluate Location

- UTA, UDOT Multi-Modal
  - Time (Seconds)– Meet operation schedule
  - Close to Highway 89
  - Safety
  - Located between South Weber & Farmington
  - Located on Arterial Street
- Bureau of Reclamation 72” water line
- Topography
- Cost
- Impact to Residents



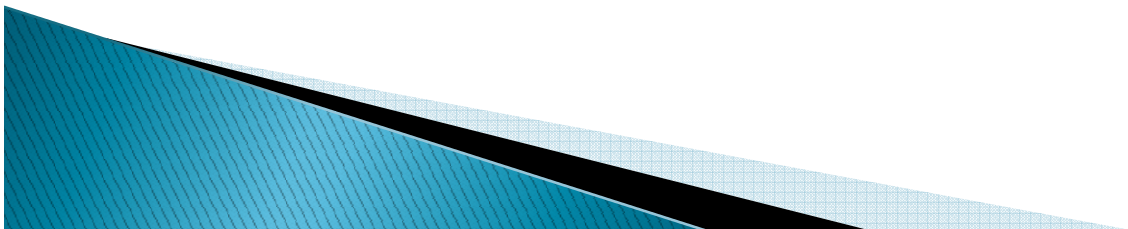
# Future Locations Park & Ride?

- Widen Highway 89
- Oak Hills Interchange
- Gordon Interchange
- Local Government– Layton, Davis County
- Wasatch Front Regional Council CMAQ



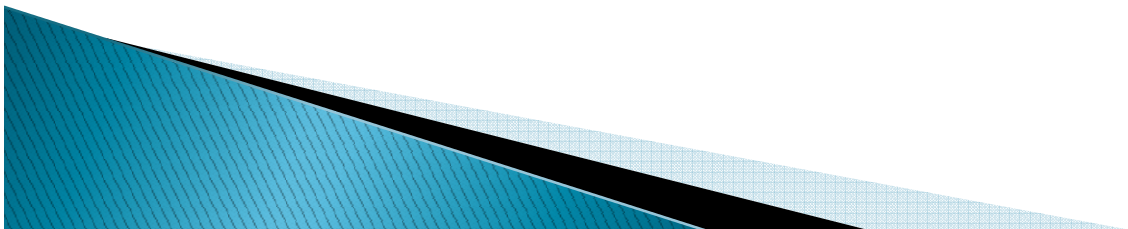
# Proposed Site

- 1.7 Acres Located Antelope & 89
- Temporary when Interchange is built
- UTA 150 Stalls
- UDOT Desires to Enter Agreement with City for Operation & Maintenance



# City Responsibilities

- Snow Removal
- Landscaping & Irrigation Maintenance
- Water for Irrigation
- Light Maintenance & Electrical Power
- Replacement of Signs
- Police/Security
- Trash Removal



# UDOT Responsibility

- Construct Frontage Road & Parking Facilities to Layton City Standards  
Asphalt,  
, Street Lights, Landscape & Irrigation, Drainage,  
Signage, Striping
- Re-surface parking lot
- Re-stripe as needed
- Maintain Shelter
- Cost of Park & Ride \$1.2 Million

