

The background of the slide is a wide-angle photograph of a vast, hilly landscape. The foreground and middle ground consist of rolling hills and valleys with sparse, dry vegetation in shades of brown and tan. In the distance, a range of mountains is visible, their peaks partially obscured by a layer of white mist or low clouds. The sky above is a pale, overcast blue with soft, white clouds. The overall tone of the image is muted and atmospheric.

Bro Petroleum Uinta Basin OBA's

Stephanie Barber-Renteria

Chanse Rinderknecht

Energy & Minerals

OBA's

- Deadman Bench-ML 54367
 - T7S R22E Section 32: W2SW4, SW4NW4, Total 120 acres
- River Bend-ML 54368
 - T8S R20E Section 32: Lots 1, 2, & 3, total 9.72 acres
- Big Hollow-ML 54369
 - T1S R4W Section 33: SW4NE4, SE4NW4, NE4SW4, NW4SE4, total 160 acres



OBA Terms

Each Lease

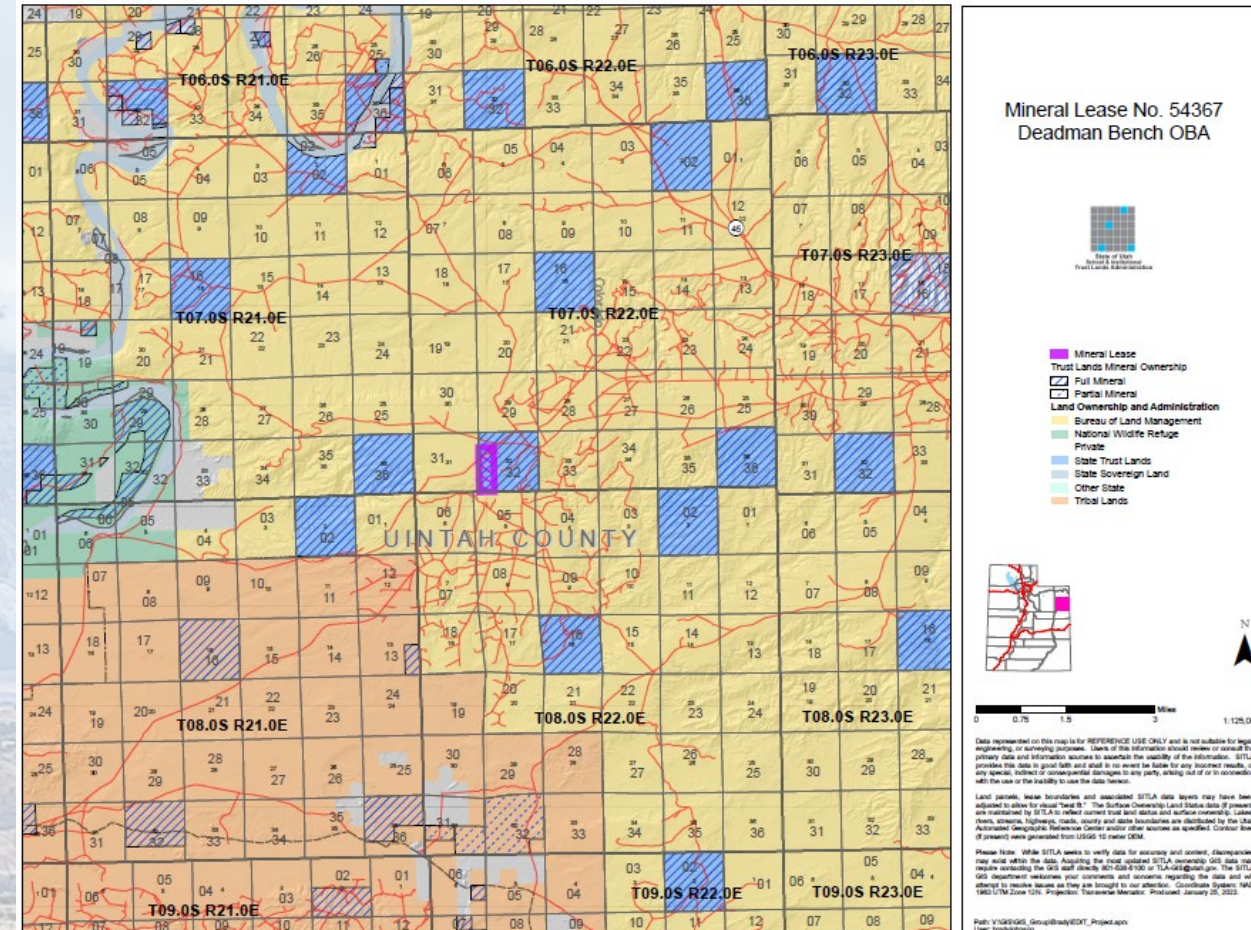
- 3-year oil, gas, & associated hydrocarbon lease
- 16.67% royalty rate
- At least one well must be drilled within the 3 years or lease terminates



Deadman Bench

- Total of 120 acres
- Bonus payment of \$500/acre (\$60,000)

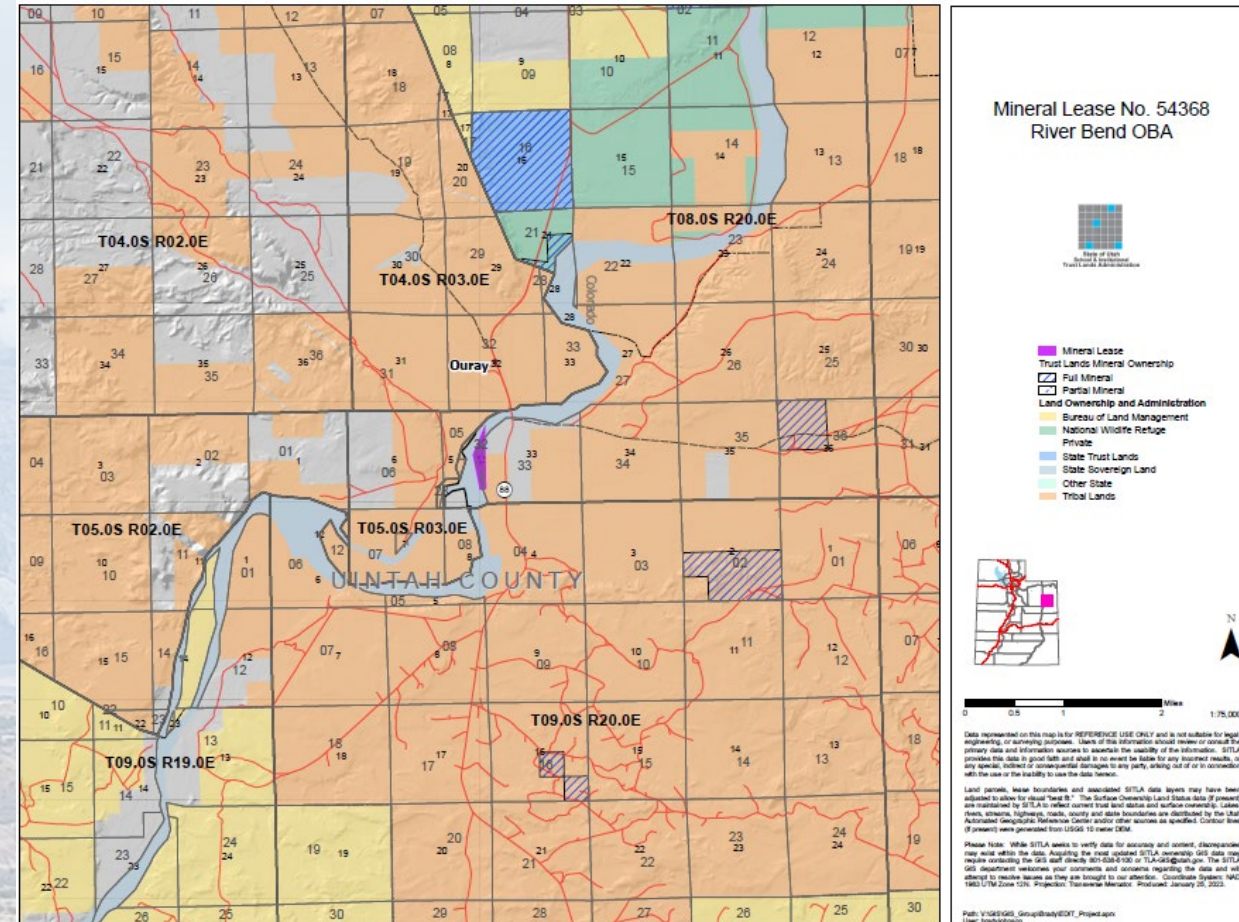
KJ2, Redwash, and Wonsit Valley Units surrounding lease show good production in multiple formations



River Bend

- Total of 9.72 acres
- Bonus payment of \$550/acre (\$5,346.00)

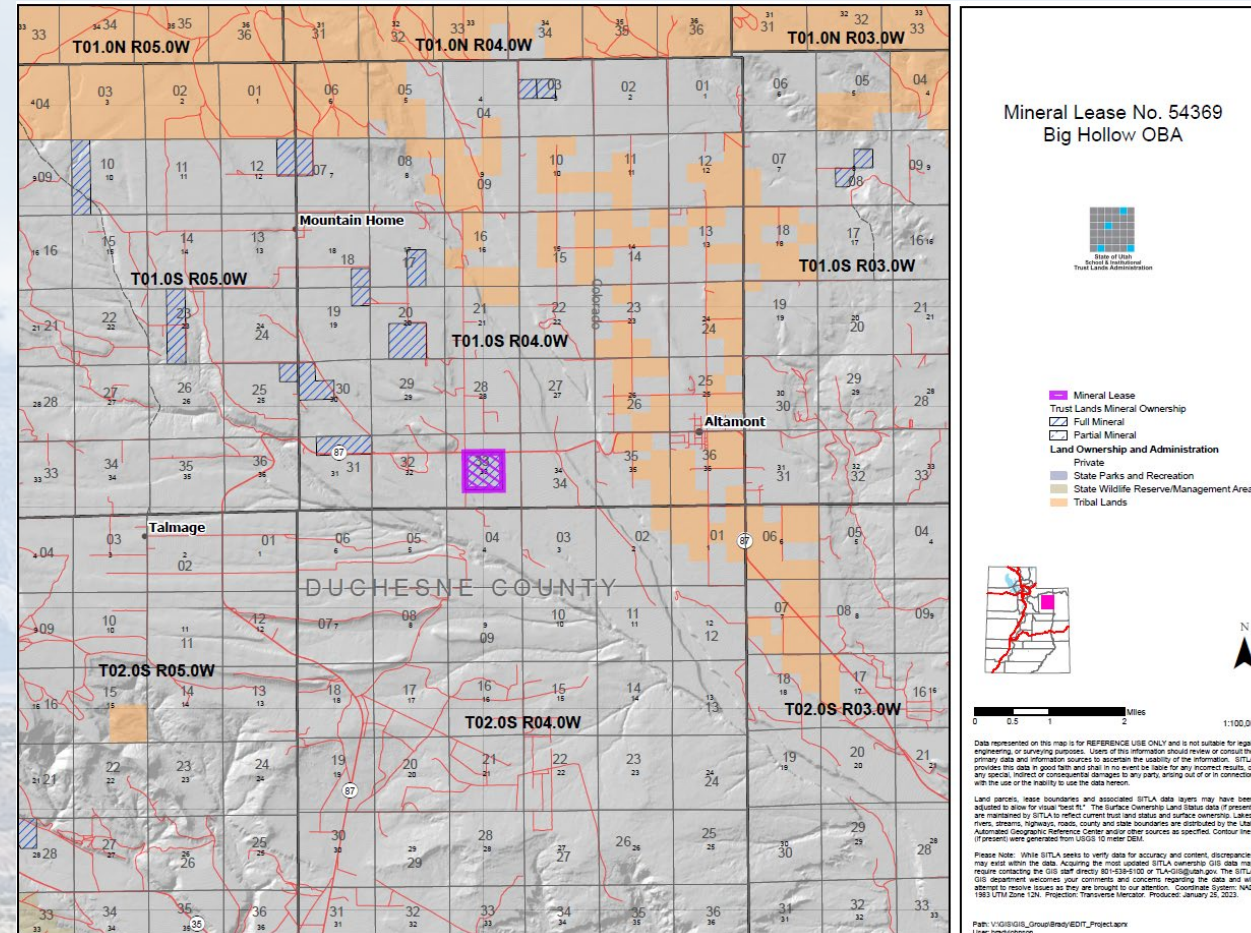
Wells surrounding the lease have shown good hydrocarbon production



Big Hollow

- Total of 160 acres
- Bonus payment of \$1,000/acre (\$160,000.00)

North of central basin “sweet spot” with wells in the area showing good production.





Summary

- 3 separate 3-year primary term leases
- Total bonus payment:\$225,346
- 16.67% royalty rate
- Opportunity for good production
- Beneficiaries are 100% schools