

Dark Skies

Planning Commission Meeting
February 1st, 2023



How many of you have seen the Milky way?



WHAT IS LIGHT POLLUTION

“Light pollution is excessive, misdirected, or obstructive artificial light at night that washes out starlight in the night sky, it interferes with astronomical research, disrupts ecosystems, has adverse health effects, and wastes energy and money”



Defining Light Pollution

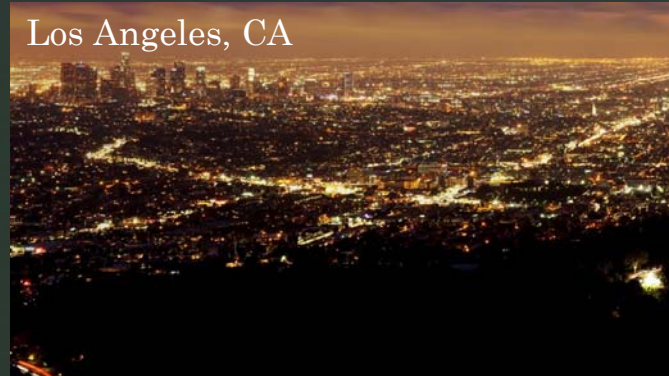


Sky glow comparisons

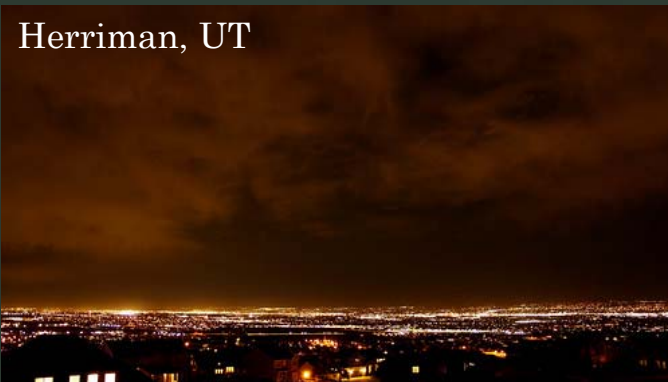
Tucson, AZ



Los Angeles, CA



Herriman, UT



Salt Lake City, UT



Impacts of Light Pollution

Ecology

- Migrant birds mistakenly follow artificial light instead of natural light
- Animals are attracted to the light and their predators follow

Human Impacts

- Higher risk of Mental and Physical health disorders
- Severed connection to the night sky

ENERGY WASTE

- 60% of Utah's electricity is coal-generated
- 35% of all outdoor lighting is wasted
- This accounts for \$3 billion (about \$10/U.S. resident)



What does this look
like?

The Bortle Scale



8/9
City/Inner
City Sky

7
City/
Suburbia
Transition

6
Bright
Suburban
Sky

5
Suburban
Sky

4
Suburban/Rural
Transition

3
Rural Sky

2
Dark-Sky
Site

1
Excellent
Dark-Sky
Site



Updated lighting ordinance

- Set guidelines for lighting, allows for aligned expectations
- Allows the governing body to better navigate the conflicts between residents
- Keeps lighting regulated in different zones

How do we get there?

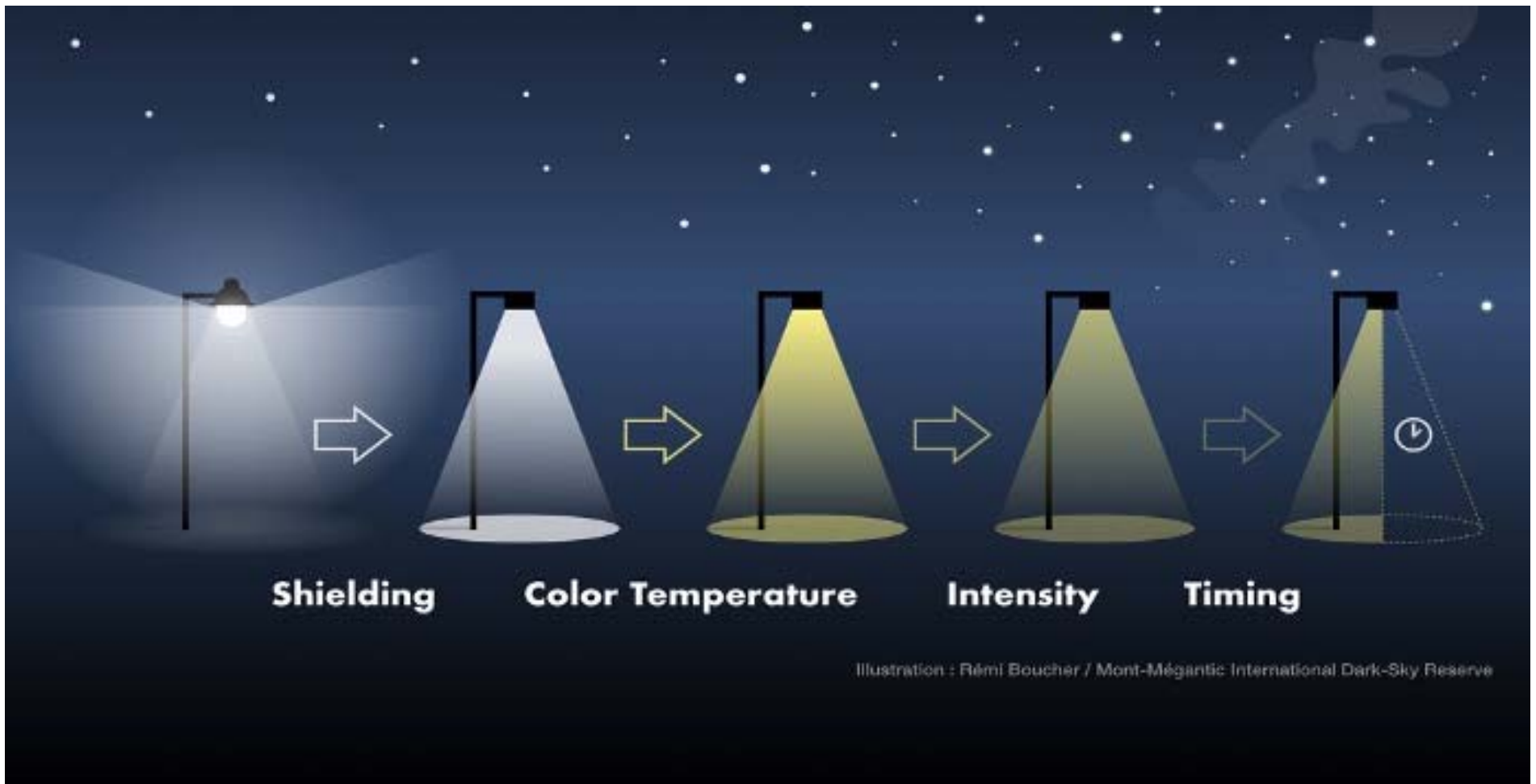


Illustration : Rémi Boucher / Mont-Mégantic International Dark-Sky Reserve





An Opportunity in Herriman

- ❧ New LED lights run
New fixtures are \$50-
\$60 on average
- ❧ Led lights can be
replaced as needed
- ❧ Become the third
Dark Sky Community
in Utah

WHAT ELSE CAN YOU DO?

- Appreciate the Darkness
- Dark Sky Week Proclamation
- Practice dark sky-friendly lighting
- Share your Knowledge of Dark Skies
- Voice your Opinion
 - Community
 - School
 - Family and Friends

Positive outcomes of changes in lighting

- Less impact on natural land/animals
- Lower risks of cancers and addiction
- Lower rates of depression and anxiety
- Lower cost over time
- A new opportunity for tourism
- Less bleeding through different zones
- Stronger ordinance to help enforce these goals

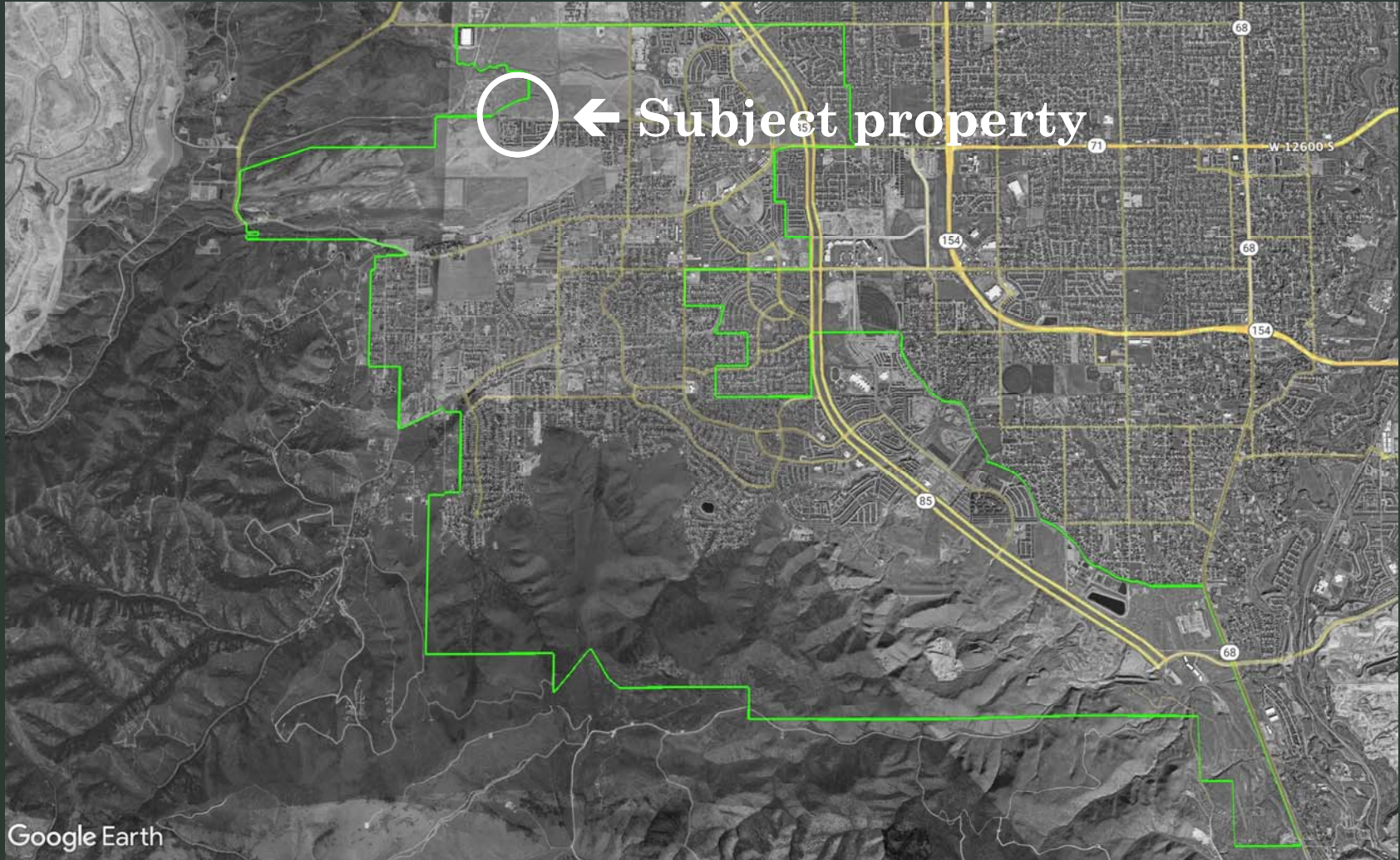
Copper Fields @ Creek Ridge Ph 4 Amd

Planning Commission Meeting

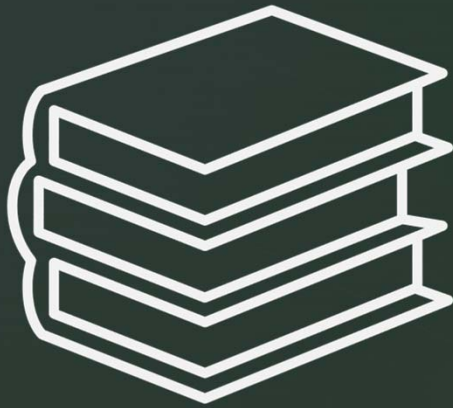
February 1, 2023



Vicinity Map



► Considerations for Approval:



**Engineering
Standards**

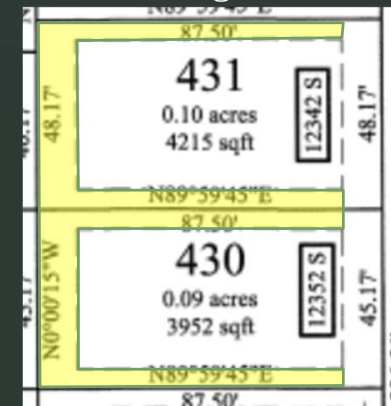


**Zoning
Ordinance**

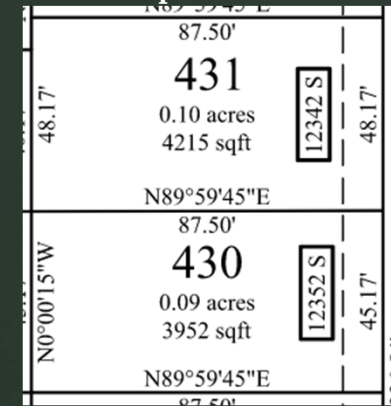
Proposal/background:

- Plat approved by Commission in June 2021
- PUEs on all sides of lots
- Building permits included window wells in PUEs in side yards
- Applicant has been providing easement waivers for home construction
- Proposing to remove PUEs in side and rear lots

Existing Plat



Proposed Plat



▸ Zoning Compliance



- Ordinance requires lots to be serviced
 - Does not specifically require side/rear easements
- Utility companies required to sign final plat agreeing to amendments
- Necessary easements (if any) can be identified during final plat process

Staff Recommendation

- **Approve** proposed plat amendment removing side/rear PUEs

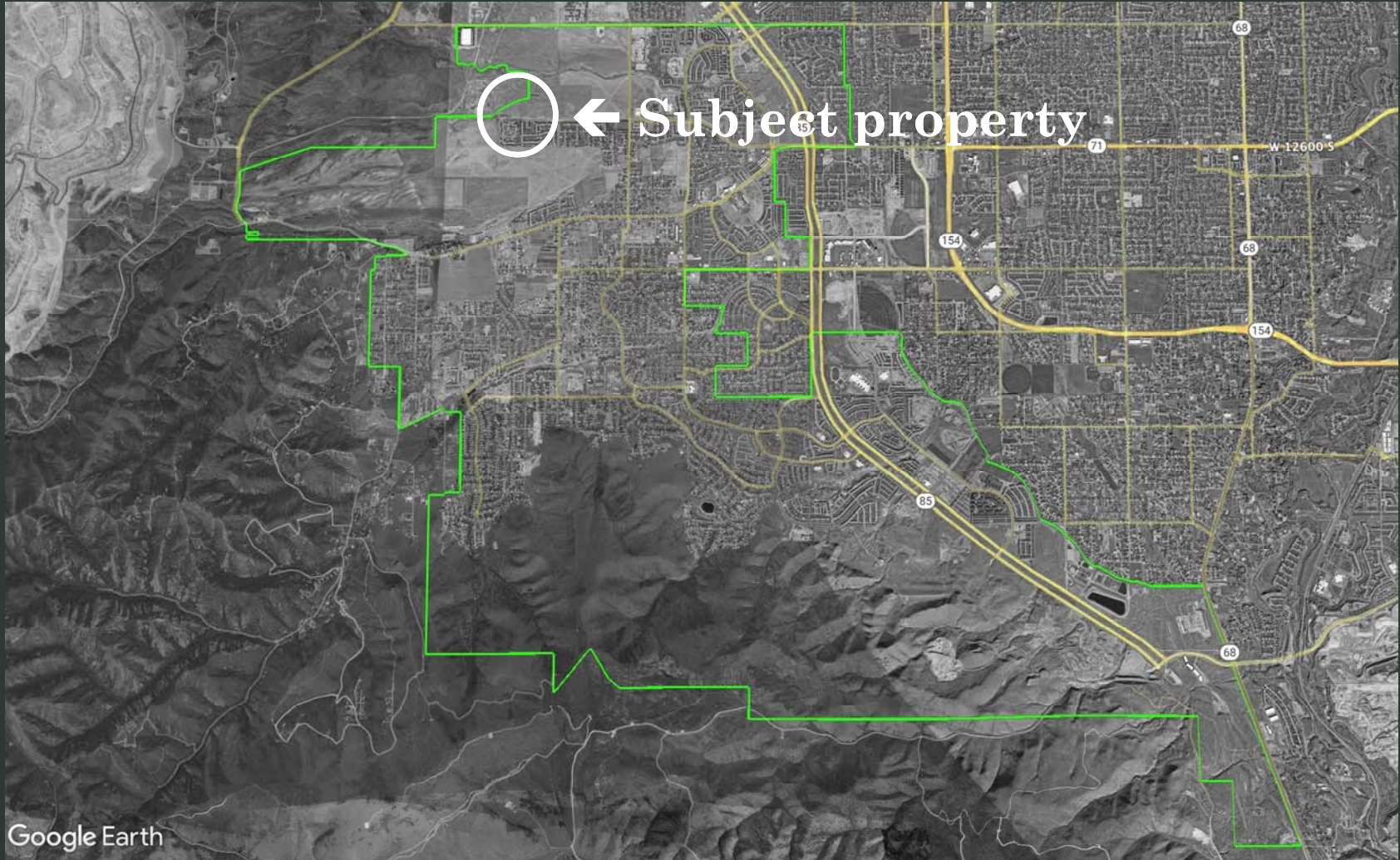
Copper Fields @ Creek Ridge Ph 4 Amd

Planning Commission Meeting

February 1, 2023

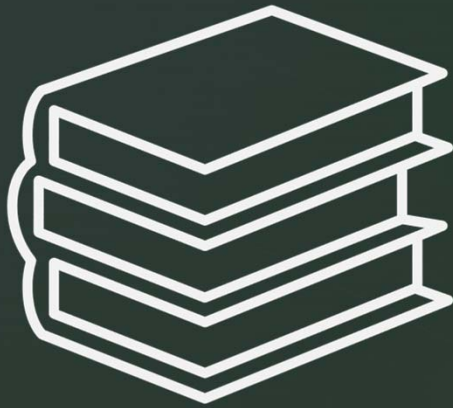


Vicinity Map



Google Earth

► Considerations for Approval:



**Engineering
Standards**

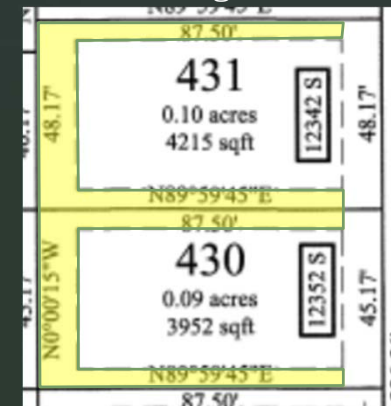


**Zoning
Ordinance**

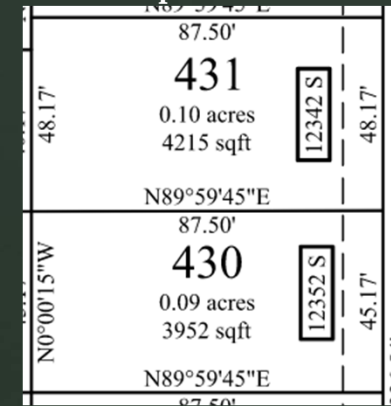
Proposal/background:

- Plat approved by Commission in June 2021
- PUEs on all sides of lots
- Building permits included window wells in PUEs in side yards
- Applicant has been providing easement waivers for home construction
- Proposing to remove PUEs in side and rear lots

Existing Plat



Proposed Plat



▸ Zoning Compliance



- Ordinance requires lots to be serviced
 - Does not specifically require side/rear easements
- Utility companies required to sign final plat agreeing to amendments
- Necessary easements (if any) can be identified during final plat process

Staff Recommendation

- **Approve** proposed plat amendment removing side/rear PUEs