



## UDOT CONSULTANT SERVICES LOCAL GOVERNMENT CONTRACT MODIFICATION

**STATE OF UTAH**  
**UTAH DEPARTMENT OF TRANSPORTATION**  
**CONSULTANT SERVICES**  
**2019-2022 LG POOL (SMALL PURCHASE)**  
**COST PLUS FIXED FEE**

**EFFECTIVE DATE** \_\_\_\_\_  
**TRACKING NO.** \_\_\_\_\_

**COOP NO.** \_\_\_\_\_  
**CONTRACT NO.** **22-8322**  
**MOD NO.** **2**

**Consultant** [Wcec Engineers Inc Dbw Wall Consultant Group \(Wcg\)](#)  
**Project No.:** [F-2236\(1\)2](#)  
**PIN Description:** [2820 South; 7440 West to 7736 West](#)  
**FINET Prog Code No.:** [5554015D](#)  
**PIN No.:** [17867](#)  
**Work Discipline:** [Preconstruction Engineering](#)

**Approved To Form** \_\_\_\_\_

**Date:** \_\_\_\_\_

This Modification is to be attached and made part of Contract No. [22-8322](#) between [Greater Salt Lake Municipal Services District](#) referred to as the LOCAL AUTHORITY, and [Wcec Engineers Inc Dbw Wall Consultant Group \(Wcg\)](#), referred to as CONSULTANT, and as approved by the Utah Department of Transportation, referred to as DEPARTMENT.

It has been determined that contract modifications are required to complete the work specified by this Contract. The CONSULTANT agrees to the modifications as specified below.

**CONTRACT MODIFICATIONS**


- Exhibit A – The “Services Provided by the CONSULTANT” contained in “Attachment C” to the Contract is changed.
- Exhibit B – The fixed fee amount, overhead rate, or hourly wages in “Attachment D, Fees” of the Contract is revised.
- Exhibit B – The maximum disbursement from “Attachment D, Fees” to the Contract [is increased by \\$55,681.51 for a new total of \\$207,557.37.](#)
- Exhibit C – The Scope of Work Completion Date for the Contract [is extended to July 24, 2023](#) and the Contract Expiration Date for the Contract [is extended to July 24, 2024.](#)
- Exhibit D – Insurance.
- Other:


The parties hereto agree to abide by all provisions of the original Contract as well as the provisions of this and any previous contract modifications.

IN WITNESS WHEREOF, they sign and cause this Contract Modification to be executed.

**CONSULTANT - [Wcec Engineers Inc Dbw Wall Consultant Group \(Wca\)](#)**

**UTAH DEPARTMENT OF TRANSPORTATION**

By:  01/10/2023  
 Title: Executive Vice President Date  
 Ryan Nuesmeyer

By:  01/10/2023  
 Title: [Director of Preconstruction](#) Date

**LOCAL AUTHORITY – [Greater Salt Lake Municipal Services District](#)**

**DEPARTMENT Comptroller’s Office**

By: \_\_\_\_\_  
 Title: \_\_\_\_\_ Date

By: \_\_\_\_\_  
 Title: Contract Administrator Date

**Contract No. [22-8322](#) Mod. No. [2](#)**

**EXHIBIT A**

**Scope of Services**

The Scope of Services is expanded to allow for additional work as requested by [John Montoya, Region 2](#), in the memorandum dated [January 5, 2023](#) in this Exhibit.

For further details, see the following pages of this Exhibit.



# UDOT Consultant Services

## Contract Approval Memo

Memo Printed on: January 5, 2023 8:50 AM



**PM Approval Date:** [January 5, 2023](#)

**UDOT PM:** John Montoya

The Project Manager has reviewed and approved the contract/modification consultant documents: Executive Summary, Work Plan, Staffing Plan, Work Schedule, and Cost Proposal.

### PROJECT INFORMATION

---

**PIN:** 17867  
**Project No.:** F-2236(1)2  
**Job/Proj:** 5554015D  
**PIN Description:** 2820 South; 7440 West to 7736 West

### CONTRACT INFORMATION

---

**CS Admin:** Cali P. Bastow  
**Contract No.:** 22-8322 Design  
**Mod No.:** 2 final design  
**SOW Completion Date:** [July 24, 2023](#)  
**Contract/Mod Amount:** [\\$55,681.51](#)  
**Fee Type:** COST PLUS FIXED FEE  
**Selection Method:** GE / LG POOL SMALL PURCHASE  
**Period:** 2019-2022 GE POOL  
**Phase:** PRELIMINARY ENGINEERING  
**Disciplines:** PRECONSTRUCTION ENGINEERING

### CONTACTS

---

#### Consultant

WCEC ENGINEERS INC DBA WALL CONSULTANT  
 Ryan Nuesmeyer  
 2139 SOUTH 1260 WEST  
 SALT LAKE CITY, UT 84119

#### Local Government

Greater Salt Lake Municipal S  
 Steven Kuhlmeier  
 2001 S STATE STREET  
 SUITE #N3 600  
 SALT LAKE CITY, UT 84190  
 (385) 468-6624  
 SKUHLMEIER@SLCO.ORG



# UDOT Consultant Services Local Government Contract Memo

Memo Printed on: January 5, 2023 8:50 AM



## PROJECT INFORMATION

**PIN:** 17867  
**Project No.:** F-2236(1)2  
**Job/Proj:** 5554015D  
**PIN Description:** 2820 South; 7440 West to 7736 West

## CONTRACT INFORMATION

**CS Admin:** Cali P. Bastow  
**Contract No.:** 22-8322 Design  
**Mod No.:** 2 final design  
**SOW Completion Date:** July 24, 2023  
**Contract/Mod Amount:** \$55,681.51  
**Cumulative Amount:** \$207,557.37  
**Fee Type:** COST PLUS FIXED FEE  
**Selection Method:** GE / LG POOL SMALL PURCHASE  
**Period:** 2019-2022 GE POOL  
**Phase:** PRELIMINARY ENGINEERING  
**Discipline:** PRECONSTRUCTION ENGINEERING

## CONTACTS

<u>Consultant</u>	<u>Local Government</u>
WCEC ENGINEERS INC DBA WALL CONSULTANT	Greater Salt Lake Municipal Services District
Ryan Nuesmeyer	Steven Kuhlmeier
2139 SOUTH 1260 WEST	2001 S STATE STREET
SALT LAKE CITY, UT 84119	SUITE #N3 600
	SALT LAKE CITY, UT 84190
(801)915-2017	(385) 468-6624
rnuesmeyer@wcecengineers.com	SKUHLMEIER@SLCO.ORG

**UDOT has contract limits for Pool Selection Methods. The limit for this contract is \$250,000.00 for the life of the contract, including any future modifications.**

**WCEC ENGINEERS INC DBA WALL CONSULTANT GROUP (WCG)**

*Prime*

**UDOT CMS Contract Executive Summary**

Contract Number:	228322	Mod:	2	Project Number:	F-2236(1)2	PIN:	17867
UDOT Primary Contact:	John Montoya						
PIN Description:	2820 South; 7440 West to 7736 West						

**Brief Description**

Brief Description:

Wall Consultant Group (WCG) proposes to modify the contract with Salt Lake County and UDOT to include preconstruction engineering services for new sidewalk, curb / gutter, driveway connections and associated asphalt pavement for an additional western segment of 2820 South from 7740 West to Damron Circle and adding a Plan-in-Hand review.

**Project Team**

Prime and Subs:

WCG will complete all design services in-house & use JUB to complete topographical survey and Right of Way documentation.

**Assumptions**

Assumptions:

- Improvements and analysis will be confined to the northside of 2820 South (i.e. the south side will not be evaluated/improved)
- Up to 7 driveway aprons and driveway connections will be modeled
- No additional pedestrian access ramps are located within the additional segment and no additional pedestrian access ramp evaluations will be required
- See base contract for additional assumptions

**Phasing**

Phasing:

This project will be completed in one 'design' phase.

**Fee Type**

Fee Type:

Cost plus fixed fee

**WCEC ENGINEERS INC DBA WALL CONSULTANT GROUP (WCG)**

*Prime*

**UDOT CMS Contract Work Plan**

Contract Number:	228322	Mod:	2	Project Number:	F-2236(1)2	PIN:	17867
UDOT Primary Contact:	John Montoya						
PIN Description:	2820 South; 7440 West to 7736 West						

**Activity: 1J1 - IDENTIFY EXISTING RIGHT-OF-WAY**

Coordinate with JUB sub-consultant

**Activity: 3Y1 - PREPARE/COMPILE PLAN-IN-HAND REVIEW PACKAGE**

3Y1 Prepare/Compile Plan-in-Hand Review Package

Compile comment resolutions, project cost estimate, and all discipline review materials to produce the Plan-in-Hand Review Package. Complete milestone quality control / quality assurance reviews.

Deliverables

- § QC Redlines and Checklists
- § Comment Resolution Form
- § Plan-in-Hand Review Package

**Activity: 3V1 - PLAN-IN-HAND REVIEW MEETING**

3V1 Plan-in-Hand Review Meeting

The plan-in-hand review is for the final review of all major roadway, drainage, signal, utility, geotechnical, and ROW designs, which should be complete. The meeting should include reviews to determine available funding and consistency, accuracy, and constructability within the project scope. It is assumed that the review period will be two weeks.

Deliverables

- § Meeting Agenda
- § Distributed Review Material
- § Meeting Notes
- § Comment Resolution Form
- § Engineers Estimate

**Activity: 4R1 - COMPLETE ROADWAY PLANS & DOCUMENTS**

4R1 Complete Roadway Plans & Documents

WCG will implement revisions from previous reviews and begin sheet production. Following Salt Lake County and UDOT CADD Standards and Plan Sheet Development Standards, WCG will prepare the roadway sheets for the planned improvements. WCG will identify utility conflicts and coordinate conflicts with SL County and the respective utility owner.

Using roadway profile and cross slope data, WCG will model the storm event spread with the absence of storm drain design for 2820 South (north of centerline crown) within the project limits.

Deliverables

- RD Plan Sheets
- RD Special Provisions (if required)

**Activity: 4Y1 - PREPARE/COMPILE PS&E REVIEW PACKAGE**

4Y1 Prepare, Compile, and Distribute PS&E Review Package

Compile Kickoff/Scoping comments, Geometry comments, project cost estimate, complete all PS&E phase QC documentation, and compile documents into one PS&E review package.

Deliverables

- PS&E Plan Review Package (plans, specifications, & estimate)
- Project Cost Estimate
- QC Documentation

**Activity: 4V1 - PLANS, SPECIFICATIONS & ESTIMATE (PS&E) REVIEW MEETING**

4V1 Plans, Specifications & Estimate (PS&E) Review Meeting

The purpose of this activity is to verify that the elements provided in the plan sheets and project documents are consistent with the project scope and available funding requirements. The meeting will include reviews to determine consistency, accuracy, and constructability.

Deliverables

- PS&E Meeting Agenda
- PS&E Meeting Notes
- PS&E Review Comment Resolution Form

**Activity: 5Y1 - INCORPORATE PS&E REVIEW COMMENTS**

5Y1 Incorporate PS&E Review Comments

WCG will implement revisions based on comments made during PS&E Review.

Deliverables

- Final Comment Resolution Form
- Final Project Cost Estimate
- Final Plan Set & Project Documents

**Activity: 5Z1 - PROJECT MANAGEMENT**

5Z1 Project Management

Ryan will be the point of contact with Salt Lake County and UDOT and help ensure SL County's intent for the project is met and the project documents are consistent with UDOT standards. Ryan will organize the internal efforts of the WCG team and oversee the technical aspects of this project. Ryan will coordinate with JUB concerning survey limits, ExROW research, ROW impacted parcels, scheduling, invoicing, etc. WCG will prepare the QC/QA report for project deliverables, monthly progress reports and accounting support to UDOT.

**Activity: 4J1 - IDENTIFY RIGHT-OF-WAY NEEDS**

Coordinate with JUB sub-consultant

**Activity: 4J2 - DEVELOP RIGHT-OF-WAY PLANS AND DOCUMENTS**

Coordinate with JUB sub-consultant



### UDOT CMS Staffing Plan

<b>Contract Number:</b>	22-8322	<b>Mod:</b>	2	<b>Project Number:</b>	F-2236(1)2	<b>PIN:</b>	17867
<b>UDOT Primary Contact:</b>	John Montoya						
<b>PIN Description:</b>	2820 South; 7440 West to 7736 West						

Employee Name	Contract Job Title	Education/Certification	License Number	Hours	Current Rate	Proposal Rate	Approval Date	Key
NUESMEYER, RYAN	PROJECT MANAGER	MS	UT-5170810-2202	41	\$76.03	\$76.03	09/28/2021	Y
SHEWELL, BRIAN	HYDRAULICS ENGINEER	BS	UT-354263-2202	0	\$74.66	\$74.66	09/28/2021	
LEHMAN, DAVE	QC ENGINEER	MASTER IN CIVIL ENGINEERING	UT-8002197-2202	32	\$71.81	\$71.81	09/28/2021	
ALBRECHT, BRYCE	ROADWAY ENGINEER	MS	UT-9634580-2202	111	\$67.70	\$67.70	NTP	
LEHMAN, DAVE	QC ENGINEER	MASTER IN CIVIL ENGINEERING	UT-8002197-2202	0	\$71.81	\$65.76	09/28/2021	
WILLIAMS, BEN	UTILITIES ENGINEER	BS	UT-5571257-2202	45	\$63.60	\$63.60	09/28/2021	Y
ROMERO, CATHY	HYDRAULICS ENGINEER	B.S.	UT-4827124-2202	8	\$63.60	\$63.60	NTP	
LARSON, CHAD	ROADWAY ENGINEER	BS	UT-10640512-2202	0	\$67.70	\$58.06	09/28/2021	Y
YOUNG, ANDREW	DESIGN ENGEER (EIT)	BS		76	\$45.14	\$45.14	09/28/2021	
BRAINARD, LORI	ADMINISTRATIVE ASSISTANT	BS		8	\$50.00	\$45.00	09/28/2021	
YOUNG, ANDREW	DESIGN ENGEER (EIT)	BS		0	\$45.14	\$38.63	09/28/2021	
Total Hours for WCEC ENGINEERS INC DBA WALL CONSULTANT GROUP (WCG):				321				

## UDOT CMS Staffing Plan

<b>Contract Number:</b>	22-8322	<b>Mod:</b>	2	<b>Project Number:</b>	F-2236(1)2	<b>PIN:</b>	17867
<b>UDOT Primary Contact:</b>	John Montoya						
<b>PIN Description:</b>	2820 South; 7440 West to 7736 West						

### Alternate Staff

Employee Name	Contract Job Title	Education/Certification	License Number	Hours	Current Rate	Proposal Rate	Approval Date	Key
WILLIAMS, DARREN	SURVEYOR	COLLEGE	UT-4975981	0	\$65.65	\$61.74	07/21/2022	
PETERSON, PAUL	QC ENGINEER	B.S.	UT-5150077-2202	0	\$63.60	\$60.14	07/21/2022	
ROMERO, CATHY	PROJECT ENGINEER	B.S.	UT-4827124-2202	0	\$63.60	\$59.59	12/03/2021	
ALBRECHT, BRYCE	QC ENGINEER	MS	UT-9634580-2202	0	\$67.70	\$58.06	09/28/2021	
BEENE, ANDREW	DESIGN ENGINEER (EIT)	BS		0	\$55.40	\$49.11	09/28/2021	
CHIPMAN, ANDY	SURVEYOR	BS	UT-11567230-2201	0	\$49.24	\$44.73	07/21/2022	
GALVEZ, PABLO	EIT	BS		0	\$45.14	\$43.21	07/21/2022	
MOORE, ROD	CADD	BS		0	\$45.14	\$43.21	07/21/2022	
POSTAK, JORDAN	SURVEY TECH	14		0	\$32.53	\$32.53	01/25/2022	
WALL, ZACH	INTERN			0	\$29.03	\$29.03	09/28/2021	
TAYLOR, SARAH	ADMINISTRATIVE ASSISTANT	CLERICAL		0	\$28.81	\$28.81	09/28/2021	
ANDERSON, SHAVON	ADMINISTRATIVE ASST			0	\$30.25	\$20.35	12/03/2021	

**Contract No. 22-8322 Mod. No. 2**

**EXHIBIT B**

**Fees**

The maximum disbursement is increased from \$151,875.86 by \$55,681.51 for a new total of \$207,557.37 as negotiated and approved by John Montoya, Region 2, in the memorandum dated January 5, 2023 in Exhibit A.

The fixed fee amount is increased by \$4,716.61 for a new total of \$12,750.25. The overhead rate in this modification is the same as the base contract's overhead rate. The base contract was written with a FIXED overhead rate.

For further details, see the following pages of this Exhibit.

<b>Contract/Modification</b>	<b>Amount</b>	<b>NTP Date</b>	<b>Notes</b>
Base Contract	\$151,875.86	9/28/2021	Design
Modification No. 1	\$.00	10/17/2022	CONTRACT DATE EXTENSION
Modification No. 2	\$55,681.51	Pending	final design
Total	\$207,557.37		

## UDOT CMS Cost Proposal

<b>Contract Number:</b>	22-8322	<b>Mod:</b>	2	<b>Project Number:</b>	F-2236(1)2	<b>PIN:</b>	17867
<b>UDOT Primary Contact:</b>	John Montoya						
<b>PIN Description:</b>	2820 South; 7440 West to 7736 West						

Labor Costs				
Employee Name	Contract Job Title	Hours	Proposal Rate	Labor Cost
ALBRECHT, BRYCE	ROADWAY ENGINEER	111	\$67.70	\$7,514.70
BRAINARD, LORI	ADMINISTRATIVE ASSISTANT	8	\$45.00	\$360.00
LEHMAN, DAVE	QC ENGINEER	32	\$71.81	\$2,297.92
NUESMEYER, RYAN	PROJECT MANAGER	41	\$76.03	\$3,117.23
ROMERO, CATHY	HYDRAULICS ENGINEER	8	\$63.60	\$508.80
WILLIAMS, BEN	UTILITIES ENGINEER	45	\$63.60	\$2,862.00
YOUNG, ANDREW	DESIGN ENGEER (EIT)	76	\$45.14	\$3,430.64
Total Hours:		321		
Total Direct Labor:				\$20,091.29
Overhead:			123.58%	\$24,828.84
Total Direct Labor plus Overhead:				\$44,920.13
Fixed Fee:			10.50%	\$4,716.61
Burdened Labor Cost:				\$49,636.74
Other Direct Charges				
ODC Item	Unit of Measure	Qty	Item Cost	Extended Cost
PER VEHICLE MILEAGE (2021)	MILE	600.0	\$.560	\$336.00
Total Other Direct Charges:				\$336.00
Sub Consultant Costs				
Firm Name				Sub Total Cost
J U B ENGINEERS INC				\$5,708.77
Total Sub Consultant Costs:				\$5,708.77
Total Contract Cost:				\$55,681.51

### UDOT CMS Hours Derivation

<b>Contract Number:</b>	22-8322	<b>Mod:</b>	2	<b>Project Number:</b>	F-2236(1)2	<b>PIN:</b>	17867
<b>UDOT Primary Contact:</b>	John Montoya						
<b>PIN Description:</b>	2820 South; 7440 West to 7736 West						

Employee Name	1J1	3Y1	3V1	4R1	4Y1	4V1	5Y1	5Z1	4J1	4J2						Total
NUESMEYER, RYAN	1	2	2	12	2	3	1	16	1	1						41
LEHMAN, DAVE	0	20	0	0	10	0	2	0	0	0						32
ALBRECHT, BRYCE	0	8	2	88	4	3	6	0	0	0						111
ROMERO, CATHY	0	0	0	8	0	0	0	0	0	0						8
WILLIAMS, BEN	0	4	2	32	2	3	2	0	0	0						45
YOUNG, ANDREW	0	4	0	64	2	0	6	0	0	0						76
BRAINARD, LORI	0	0	0	0	0	0	0	8	0	0						8

### UDOT CMS Hours Derivation

<b>Contract Number:</b>	22-8322	<b>Mod:</b>	2	<b>Project Number:</b>	F-2236(1)2	<b>PIN:</b>	17867
<b>UDOT Primary Contact:</b>	John Montoya						
<b>PIN Description:</b>	2820 South; 7440 West to 7736 West						

	1J1	3Y1	3V1	4R1	4Y1	4V1	5Y1	5Z1	4J1	4J2						Total
Firm Activity Totals:	1	38	6	204	20	9	17	24	1	1						321
	1J1	3Y1	3V1	4R1	4Y1	4V1	5Y1	5Z1	4J1	4J2						Total
Transaction Activity Totals:	5	38	6	204	20	9	17	29	5	17						350

**UDOT CMS Contract Executive Summary**

Contract Number:	228322	Mod:	2	Project Number:	F-2236(1)2	PIN:	17867
UDOT Primary Contact:	John Montoya						
PIN Description:	2820 South; 7440 West to 7736 West						

**Brief Description**

J-U-B’s modification to the original scope of work is outlined below, as well as the cost estimate and schedule that will be the basis for completing the right of way services for the referenced project.

**Project Team**

Wall Consultant Group will be the Prime Consultant for this project and J-U-B will be used as a subconsultant to assist with the right of way.

**Assumptions**

Due to the passage of time from the original work and various ownership changes throughout the corridor, this contract modification assumes that J-U-B will verify the original right of way research for up to 8 ownerships which have not yet been included in any partial summary submittals. As needed, J-U-B will provide an updated ExROW base map for the project footprint. J-U-B will further provide all of the files and documents that are now required by UDOT that were not required as part of the original scope of work.

**Phasing**

**Fee Type**

The fee type for this project will be cost plus fixed fee with an amount not to exceed that is shown in the fee estimate.

**UDOT CMS Contract Work Plan**

Contract Number:	228322	Mod:	2	Project Number:	F-2236(1)2	PIN:	17867
UDOT Primary Contact:	John Montoya						
PIN Description:	2820 South; 7440 West to 7736 West						

**Activity: 1J1 - IDENTIFY EXISTING RIGHT-OF-WAY**

OVERVIEW:

J-U-B will verify the existing right of way maps, deeds, plats, and other pertinent documents to determine the existing right of way limits for the corridor. As necessary, J-U-B will also perform independent research with the Salt Lake County Recorder's Office.

TASKS:

- Verify deed plotting and ownership information for parcels which have not yet been included in any partial summary submittals.
- Verify new ownership information for parcels that have recently changed.
- J-U-B will update a MicroStation ExROW.dgn basemap file in ORD format.
- Attend one (1) coordination meeting with up to two (2) J-U-B staff.
- Perform a quality control review.

DELIVERABLES:

- Updated property owner spreadsheet
- Updated Electronic ExROW Base Mapping file
- QC Documentation

**Activity: 5Z1 - PROJECT MANAGEMENT**

OVERVIEW:

This task includes time for administration of contract documents and internal team coordination. J-U-B will provide Project Management at a level commensurate with the size and complexity of the Project pursuant to the standard of care. This work plan assumes a level of effort equal to the number of hours shown in the cost estimate for this task.

TASKS:

- Attend project meetings and provide other communications. It is assumed up to two (2) meetings in addition to the kick-off meeting noted above, may be needed to ensure that project objectives are met.
- Internal coordination meetings.
- Project setup, record keeping, monthly invoicing and project closeout.

DELIVERABLES:

- Monthly invoices
- Meeting summaries as requested .

**Activity: 4J1 - IDENTIFY RIGHT-OF-WAY NEEDS**

OVERVIEW:

Evaluate the proposed design and identify limits of construction and develop the line work for the required right of way and temporary construction easements (TCE).



TASKS:

- Prepare right of way shapes for use in preparing right of way plans and documents.

DELIVERABLES:

- List of affected parcels
- QC Documentation

**Activity: 4J2 - DEVELOP RIGHT-OF-WAY PLANS AND DOCUMENTS**

OVERVIEW:

In addition to developing the right of way plans and documents as outlined in the original scope, J-U-B has been required to address numerous ownership changes with other changes still pending. Further, additional requirements have been added to the right of way partial summary submittals including individual exhibits, updating the format of previously submitted signature documents, and creating GIS conversion files for all of the parcels.

TASKS:

- Prepare, and/or update right of way documents and plan sheets
- Attend one (1) ROW coordination meetings with up to two (2) J-U-B staff.
- Perform a quality control review.

ASSUMPTIONS:

- It is not anticipated that ROW markers will be placed as part of this work.

DELIVERABLES:

- Supplemental ROW summaries with updated documents including:
  - o ROW Title Sheet
  - o ROW Plan Sheets
  - o ROW Documents (E-Summaries, RW-53 Summary Sheets, Ownership Records, Signature Deeds, Vesting Deeds, Deed Plots, ROW Exhibits for acquisition agents)
  - o GIS conversion files
  - o Revised Final right of way plans
- QC Documentation

### UDOT CMS Staffing Plan

<b>Contract Number:</b>	22-8322	<b>Mod:</b>	2	<b>Project Number:</b>	F-2236(1)2	<b>PIN:</b>	17867
<b>UDOT Primary Contact:</b>	John Montoya						
<b>PIN Description:</b>	2820 South; 7440 West to 7736 West						

Employee Name	Contract Job Title	Education/Certification	License Number	Hours	Current Rate	Proposal Rate	Approval Date	Key
WILLES, JASON	SURVEY MANAGER	A.A.S.	UT-376067-2201	12	\$86.15	\$86.15	09/28/2021	
BUDGE, JONATHAN	PROJECT ENGINEER LEAD	B.S.	UT-8203769-2202	4	\$59.77	\$59.77	09/28/2021	
LAMBERT, ROBERT	PROJECT MANAGER	MS	UT-4858460-2202	0	\$61.56	\$54.94	09/28/2021	
RUSBY, TERRY	SURVEYOR	A.A.S.	UT-9258143-2201	12	\$52.25	\$52.25	09/28/2021	
HOWELL, STEPHEN	SURVEYOR	A.A.S.	UT-7387065	0	\$52.04	\$46.02	09/28/2021	
HOLM, BROOKE	PROJECT ACCOUNTANT	A.A.S.		1	\$44.97	\$44.97	09/28/2021	
WOHLFORD, JOHN	CAD	M.S.		0	\$39.71	\$34.78	09/28/2021	
BECK, TANNER	SURVEY TECHNICIAN			0	\$32.10	\$24.00	09/28/2021	
Total Hours for J U B ENGINEERS INC:				29				

## UDOT CMS Cost Proposal

<b>Contract Number:</b>	22-8322	<b>Mod:</b>	2	<b>Project Number:</b>	F-2236(1)2	<b>PIN:</b>	17867
<b>UDOT Primary Contact:</b>	John Montoya						
<b>PIN Description:</b>	2820 South; 7440 West to 7736 West						

Labor Costs				
Employee Name	Contract Job Title	Hours	Proposal Rate	Labor Cost
BUDGE, JONATHAN	PROJECT ENGINEER LEAD	4	\$59.77	\$239.08
HOLM, BROOKE	PROJECT ACCOUNTANT	1	\$44.97	\$44.97
RUSBY, TERRY	SURVEYOR	12	\$52.25	\$627.00
WILLES, JASON	SURVEY MANAGER	12	\$86.15	\$1,033.80
Total Hours:		29		
Total Direct Labor:				\$1,944.85
Overhead:			166.03%	\$3,229.03
Total Direct Labor plus Overhead:				\$5,173.88
Fixed Fee:			10.00%	\$517.39
Burdened Labor Cost:				\$5,691.27
Other Direct Charges				
ODC Item	Unit of Measure	Qty	Item Cost	Extended Cost
FCCM (0.90% X LABOR)	LUMP	17.5	\$1.000	\$17.50
Total Other Direct Charges:				\$17.50
Total Cost for J U B ENGINEERS INC:				\$5,708.77

### UDOT CMS Hours Derivation

<b>Contract Number:</b>	22-8322	<b>Mod:</b>	2	<b>Project Number:</b>	F-2236(1)2	<b>PIN:</b>	17867
<b>UDOT Primary Contact:</b>	John Montoya						
<b>PIN Description:</b>	2820 South; 7440 West to 7736 West						

Employee Name	1J1	5Z1	4J1	4J2												Total
WILLES, JASON	2	4	2	4												12
BUDGE, JONATHAN	0	0	0	4												4
RUSBY, TERRY	2	0	2	8												12
HOLM, BROOKE	0	1	0	0												1

### UDOT CMS Hours Derivation

<b>Contract Number:</b>	22-8322	<b>Mod:</b>	2	<b>Project Number:</b>	F-2236(1)2	<b>PIN:</b>	17867
<b>UDOT Primary Contact:</b>	John Montoya						
<b>PIN Description:</b>	2820 South; 7440 West to 7736 West						

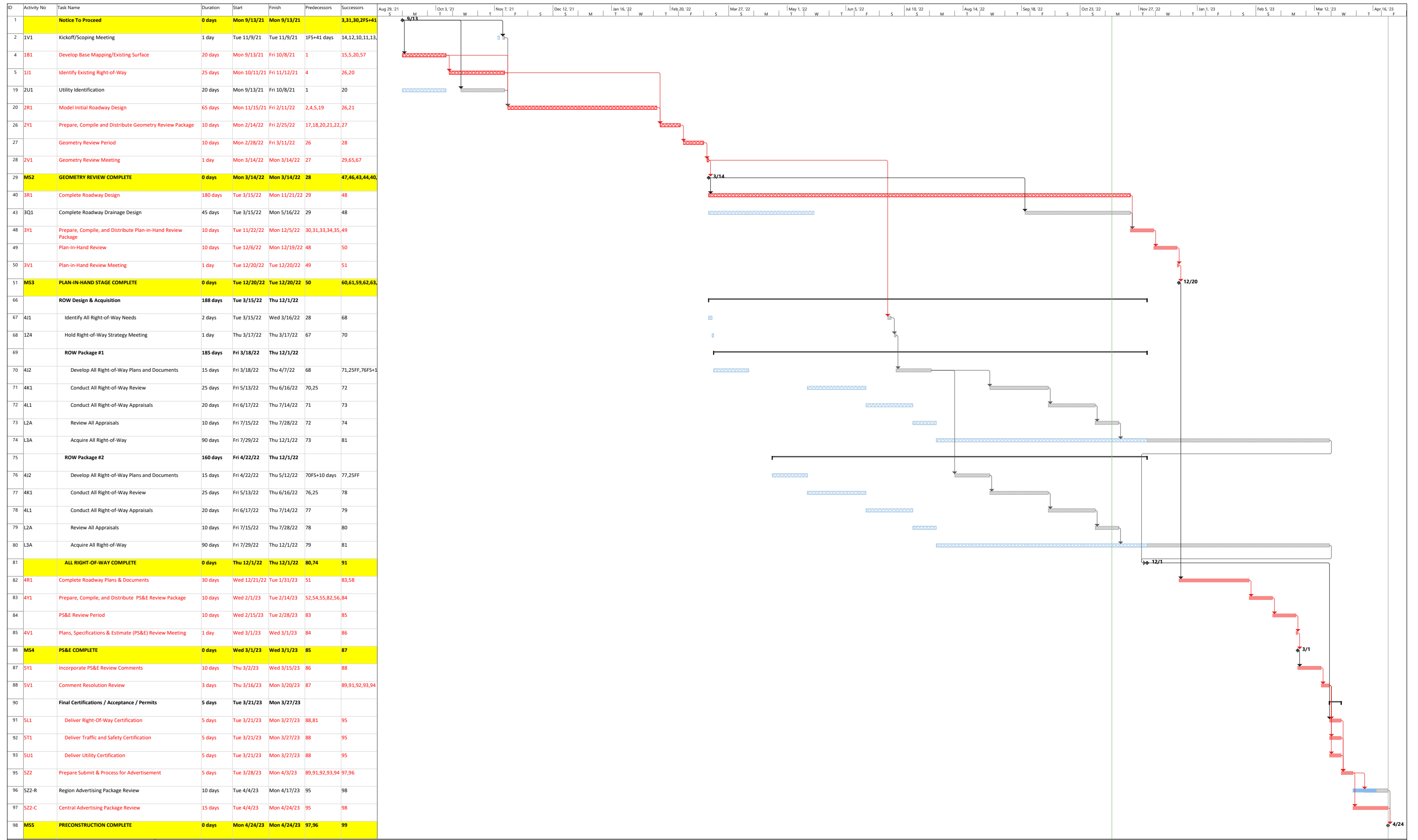
	1J1	5Z1	4J1	4J2												Total
Firm Activity Totals:	4	5	4	16												29

**Contract No. 22-8322 Mod. No. 2**

**EXHIBIT C**

**Contract Date**

The Scope of Work Completion Date for the contract [is extended to July 24, 2023](#) . The Contract Expiration Date for the contract [is extended to July 24, 2024](#). The CONSULTANT is required to finish all work by the contract completion date. If additional time is required to complete this Scope of Work, the CONSULTANT will be required to request a "Contract Date Extension Modification".



ID	Activity No	Task Name	Duration	Start	Finish	Predecessors	Successors
1		<b>Notice To Proceed</b>	0 days	Mon 9/13/21	Mon 9/13/21		3,31,30,2FS+41
2	1V1	Kickoff/Scoping Meeting	1 day	Tue 11/9/21	Tue 11/9/21	1FS+41 days	14,12,10,11,13
4	1B1	Develop Base Mapping/Existing Surface	20 days	Mon 9/13/21	Fri 10/8/21	1	15,5,20,57
5	1J1	Identify Existing Right-of-Way	25 days	Mon 10/11/21	Fri 11/12/21	4	26,20
19	2U1	Utility Identification	20 days	Mon 9/13/21	Fri 10/8/21	1	20
20	2R1	Model Initial Roadway Design	65 days	Mon 11/15/21	Fri 2/11/22	2,4,5,19	26,21
26	2Y1	Prepare, Compile and Distribute Geometry Review Package	10 days	Mon 2/14/22	Fri 2/25/22	17,18,20,21,22,27	
27		Geometry Review Period	10 days	Mon 2/28/22	Fri 3/11/22	26	28
28	2V1	Geometry Review Meeting	1 day	Mon 3/14/22	Mon 3/14/22	27	29,65,67
29	<b>MS2</b>	<b>GEOMETRY REVIEW COMPLETE</b>	0 days	Mon 3/14/22	Mon 3/14/22	28	47,46,43,44,40
40	3R1	Complete Roadway Design	180 days	Tue 3/15/22	Mon 11/21/22	29	48
43	3Q1	Complete Roadway Drainage Design	45 days	Tue 3/15/22	Mon 5/16/22	29	48
48	3Y1	Prepare, Compile, and Distribute Plan-in-Hand Review Package	10 days	Tue 11/22/22	Mon 12/5/22	30,31,33,34,35,49	
49		Plan-in-Hand Review	10 days	Tue 12/6/22	Mon 12/19/22	48	50
50	3V1	Plan-in-Hand Review Meeting	1 day	Tue 12/20/22	Tue 12/20/22	49	51
51	<b>MS3</b>	<b>PLAN-IN-HAND STAGE COMPLETE</b>	0 days	Tue 12/20/22	Tue 12/20/22	50	60,61,59,62,63
66		<b>ROW Design &amp; Acquisition</b>	188 days	Tue 3/15/22	Thu 12/1/22		
67	4I1	Identify All Right-of-Way Needs	2 days	Tue 3/15/22	Wed 3/16/22	28	68
68	1Z4	Hold Right-of-Way Strategy Meeting	1 day	Thu 3/17/22	Thu 3/17/22	67	70
69		<b>ROW Package #1</b>	185 days	Fri 3/18/22	Thu 12/1/22		
70	4J2	Develop All Right-of-Way Plans and Documents	15 days	Fri 3/18/22	Thu 4/7/22	68	71,25FF,76FS+1
71	4K1	Conduct All Right-of-Way Review	25 days	Fri 5/13/22	Thu 6/16/22	70,25	72
72	4L1	Conduct All Right-of-Way Appraisals	20 days	Fri 6/17/22	Thu 7/14/22	71	73
73	L2A	Review All Appraisals	10 days	Fri 7/15/22	Thu 7/28/22	72	74
74	L3A	Acquire All Right-of-Way	90 days	Fri 7/29/22	Thu 12/1/22	73	81
75		<b>ROW Package #2</b>	160 days	Fri 4/22/22	Thu 12/1/22		
76	4J2	Develop All Right-of-Way Plans and Documents	15 days	Fri 4/22/22	Thu 5/12/22	70FS+10 days	77,25FF
77	4K1	Conduct All Right-of-Way Review	25 days	Fri 5/13/22	Thu 6/16/22	76,25	78
78	4L1	Conduct All Right-of-Way Appraisals	20 days	Fri 6/17/22	Thu 7/14/22	77	79
79	L2A	Review All Appraisals	10 days	Fri 7/15/22	Thu 7/28/22	78	80
80	L3A	Acquire All Right-of-Way	90 days	Fri 7/29/22	Thu 12/1/22	79	81
81		<b>ALL RIGHT-OF-WAY COMPLETE</b>	0 days	Thu 12/1/22	Thu 12/1/22	80,74	91
82	4R1	Complete Roadway Plans & Documents	30 days	Wed 12/21/22	Tue 1/31/23	51	83,58
83	4Y1	Prepare, Compile, and Distribute PS&E Review Package	10 days	Wed 2/1/23	Tue 2/14/23	52,54,55,82,56,84	
84		PS&E Review Period	10 days	Wed 2/15/23	Tue 2/28/23	83	85
85	4V1	Plans, Specifications & Estimate (PS&E) Review Meeting	1 day	Wed 3/1/23	Wed 3/1/23	84	86
86	<b>MS4</b>	<b>PS&amp;E COMPLETE</b>	0 days	Wed 3/1/23	Wed 3/1/23	85	87
87	5Y1	Incorporate PS&E Review Comments	10 days	Thu 3/2/23	Wed 3/15/23	86	88
88	5V1	Comment Resolution Review	3 days	Thu 3/16/23	Mon 3/20/23	87	89,91,92,93,94
90		<b>Final Certifications / Acceptance / Permits</b>	5 days	Tue 3/21/23	Mon 3/27/23		
91	5L1	Deliver Right-Of-Way Certification	5 days	Tue 3/21/23	Mon 3/27/23	88,81	95
92	5T1	Deliver Traffic and Safety Certification	5 days	Tue 3/21/23	Mon 3/27/23	88	95
93	5U1	Deliver Utility Certification	5 days	Tue 3/21/23	Mon 3/27/23	88	95
95	5Z2	Prepare Submit & Process for Advertisement	5 days	Tue 3/28/23	Mon 4/3/23	89,91,92,93,94	97,96
96	5Z2-R	Region Advertising Package Review	10 days	Tue 4/4/23	Mon 4/17/23	95	98
97	5Z2-C	Central Advertising Package Review	15 days	Tue 4/4/23	Mon 4/24/23	95	98
98	<b>MSS</b>	<b>PRECONSTRUCTION COMPLETE</b>	0 days	Mon 4/24/23	Mon 4/24/23	97,96	99

2820 South, 7630 West to 7440 West - Salt Lake County  
 PIN: 17867  
 Date: Fri 11/1/22

Legend for Gantt chart symbols and colors:

- Baseline: Solid grey line
- Milestone: Diamond symbol
- Project Summary: Solid grey bar
- Inactive Summary: Dashed grey bar
- Manual Task: Solid blue bar
- Manual Summary Rollup: Solid light blue bar
- Manual Summary: Solid dark blue bar
- Start-only: Solid light blue bar with arrowhead
- Finish-only: Solid dark blue bar with arrowhead
- External Task: Solid light blue bar with 'E' symbol
- External Milestone: Diamond symbol with 'E'
- Deadline: Solid grey bar with 'D' symbol
- Late Start Late Finish: Solid grey bar with 'L' symbol
- Task Critical: Solid red bar
- Manual Progress: Solid light blue bar
- Late Non-Critical Tasks: Solid light blue bar with 'L' symbol
- Late Critical Tasks: Solid red bar with 'L' symbol
- Baseline: Dashed grey bar
- Inactive Task Progress: Dashed red bar
- Summary Split: Solid grey bar with vertical line
- Critical Split: Solid red bar with vertical line

**Contract No. 22-8322 Mod. No. 2**

**EXHIBIT D**

**Insurance**

As stated in the Contract Attachment B Standard Terms and Conditions, services to be provided by the CONSULTANT under this contract are required to be covered by insurance. Insurance must be maintained in force until all activities which are required by this contract or as changed by contract modification are completed and accepted by the DEPARTMENT.

<b>Insurance</b>	<b>Full Coverage Exception</b>	<b>Aggregate Coverage Exception</b>	<b>Expiration Date</b>	<b>Insurance Carrier</b>	<b>Policy Number</b>	<b>Each Occurrence Limit</b>	<b>General Aggregate Limit</b>	<b>Additional Endorsement</b>
AUTOMOBILE LIABILITY	N	N	8/4/2023	STATE AUTO INSURANCE	100 340 16 CA	\$1,000,000	\$0	N
EXCESS/UMBRELLA LIABILITY	N	N	10/30/2023	STATE AUTO INSURANCE	101 018 22 CU	\$1,000,000	\$1,000,000	N
GENERAL LIABILITY	N	N	10/30/2023	STATE AUTO INSURANCE	101 018 20 CB	\$2,000,000	\$4,000,000	Y
PROFESSIONAL LIABILITY	N	N	10/30/2023	HISCOX	ANE 236 074 220	\$3,000,000	\$4,000,000	N
WORKERS COMPENSATION	N	N	3/1/2023	AMERICAN ZURICH INSURANCE CO	WC-55-35-495-09	\$1,000,000	\$0	N