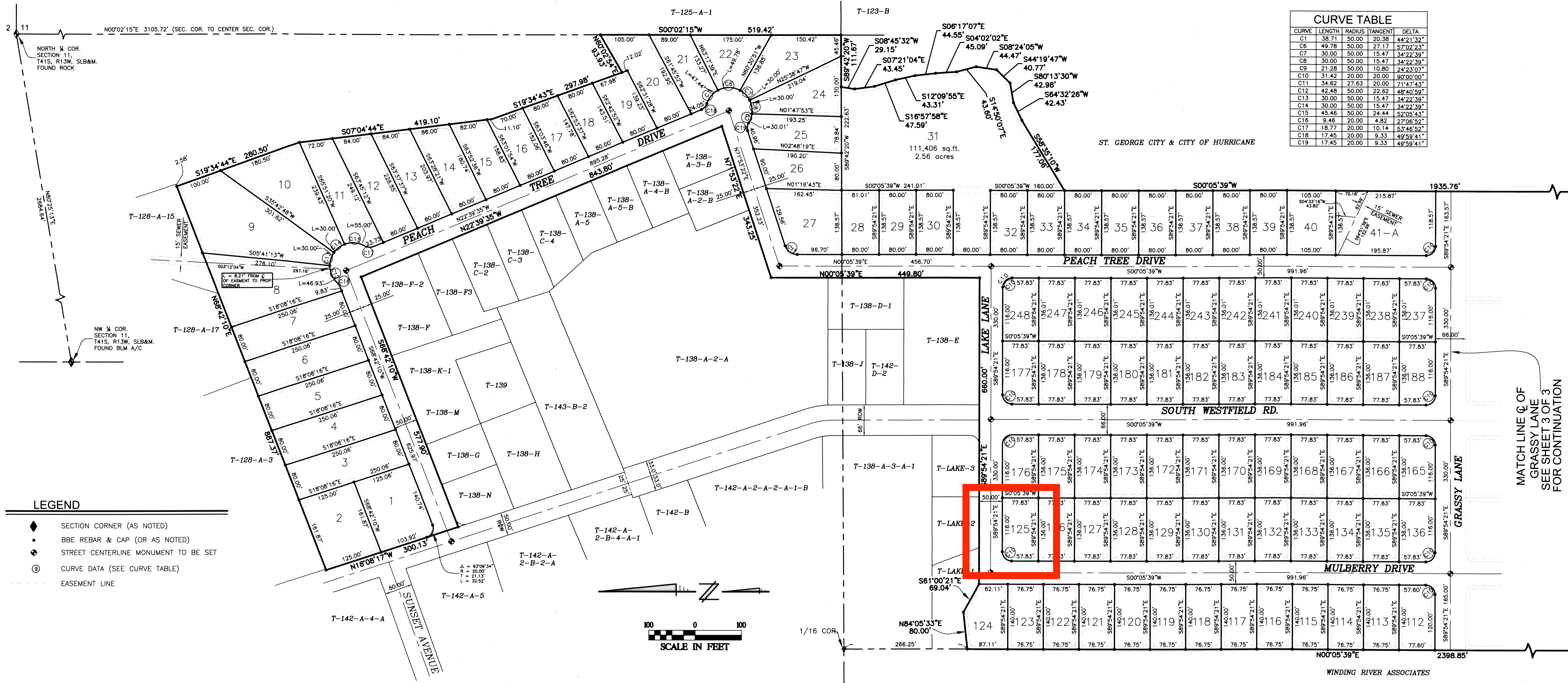
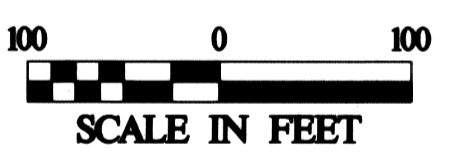


CURVE	LENGTH	RADIUS	TANGENT	DELTA
C1	38.71	50.00	20.38	44°21'32"
C6	49.78	50.00	27.17	57°02'23"
C7	30.00	50.00	15.47	34°22'39"
C8	30.00	50.00	15.47	34°22'39"
C9	21.28	50.00	10.80	24°23'07"
C10	31.42	20.00	20.00	90°00'00"
C11	34.62	27.63	20.00	71°47'43"
C12	42.48	50.00	22.62	48°40'59"
C13	30.00	50.00	15.47	34°22'39"
C14	30.00	50.00	15.47	34°22'39"
C15	45.48	50.00	24.44	52°05'43"
C16	9.46	20.00	4.82	27°06'52"
C17	18.77	20.00	10.14	53°46'52"
C18	17.45	20.00	9.33	49°59'41"
C19	17.45	20.00	9.33	49°59'41"



- LEGEND**
- ◆ SECTION CORNER (AS NOTED)
 - BBE REBAR & CAP (OR AS NOTED)
 - ⊕ STREET CENTERLINE MONUMENT TO BE SET
 - ⊙ CURVE DATA (SEE CURVE TABLE)
 - - - EASEMENT LINE



AMENDMENT NOTES

- ALL LOTS HAVE A 7.5' UTILITIES & SEWER EASEMENT ALONG ALL FRONT SIDE AND REAR LOTS.
- ALL DRAINAGE IS TO BE HANDLED IN THE PROPOSED STREETS
- THIS SUBDIVISION WAS FIRST RECORDED ON MAY 4, 1972 AS DOC.#00148835, AMENDED OCTOBER 5, 1998 AS DOC.# 00619614, AND 2ND AMENDED & EXTENDED MARCH 31, 2016 AS DOC.# 20160011114, OFFICIAL RECORDS OF WASHINGTON COUNTY, UTAH.

3rd AMENDED NARRATIVE

THIS PLAT WAS AMENDED TO CREATE THREE (3) LOTS (58R, 59A, AND 59B) WHERE LOTS 58 AND 59 WERE. EASEMENT BETWEEN ORIGINAL LOTS 58 AND 59 IS TO BE ABANDONED WITH THIS PLAT.

EASEMENTS SHALL BE CREATED ALONG ALL NEW AND/OR ADJUSTED LOT LINES TO CONFORM WITH NOTES ON THE PREVIOUSLY RECORDED PLATS WHICH REMAIN ON THIS PLAT UNCHANGED.



ALMOND HEIGHTS PARK SUBDIVISION 3RD AMENDED

LOCATED IN THE EAST HALF OF THE WEST HALF OF SECTION 11 AND THE EAST HALF OF THE NORTHWEST QUARTER OF SECTION 14, TOWNSHIP 41 SOUTH, RANGE 13 WEST OF THE SALT LAKE BASE AND MERIDIAN - TOQUERVILLE CITY, WASHINGTON COUNTY, UTAH

FILE NAME: 541-10-16
DATE: OCT. 26, 2017
SHEET 2 OF 3

MATCH LINE @ OF GRASSY LANE SEE SHEET 3 OF 3 FOR CONTINUATION