



State of Utah
School and Institutional
Trust Lands Administration

CENTRAL AREA OFFICE
2031 South Industrial Park Road
Richfield, Utah 84701-7051
435-896-2559 Fax: 435-896-0349
trustlands.utah.gov

Michelle McConkie
Director

December 13, 2022

Five County Association of Governments
1070 West 1600 South, Building B
St. George, Utah 84770

RE: Notification of Trust Land Sale C-27125

Dear Executive Director:

This letter is to inform you that the School and Institutional Trust Lands Administration (SITLA) has recently submitted a sale proposal to the RDCC registry which will be located within your Association of Governments jurisdiction.

Enclosed please find a map and a public notice regarding the sale proposal. This can also be found in the RDCC Project Management System.

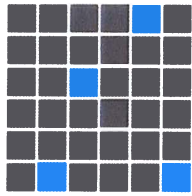
Review this information at your convenience, and if you should have any questions, please call me at 435-896-2559.

Sincerely,

Ronald G Torgerson
Deputy Assistant Director-Surface

RT/cn

Enclosed: Public Notice
Map



State of Utah
School and Institutional
Trust Lands Administration

Public Notice – Land for Sale

The State of Utah School and Institutional Trust Lands Administration "SITLA" is planning to sell the following property.

This parcel is located five miles north of Kanab in Kane County. Interested parties are encouraged to do their own due diligence regarding the subject property.

The legal description of the parcel is as follows:

Kane County

T42S, R6W, SLB&M

Section 32: W2NW4NE4, W2SW4NE4, W2NW4SE4,
W2SW4SE4, E2SE4SW4, NE4SW4, E2SE4NW4 (less 10.23 acres
in ROW 557 and Kane County ROW subject to re-survey)
containing 149.77 acres more or less

For more information about the parcel and about the sale process, please feel free to contact Ron Torgerson.

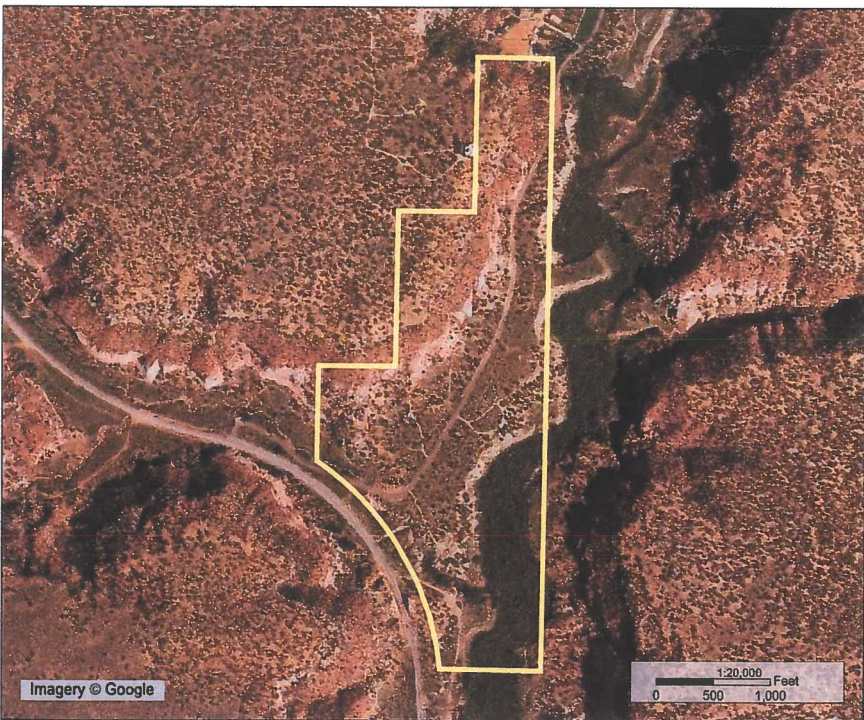
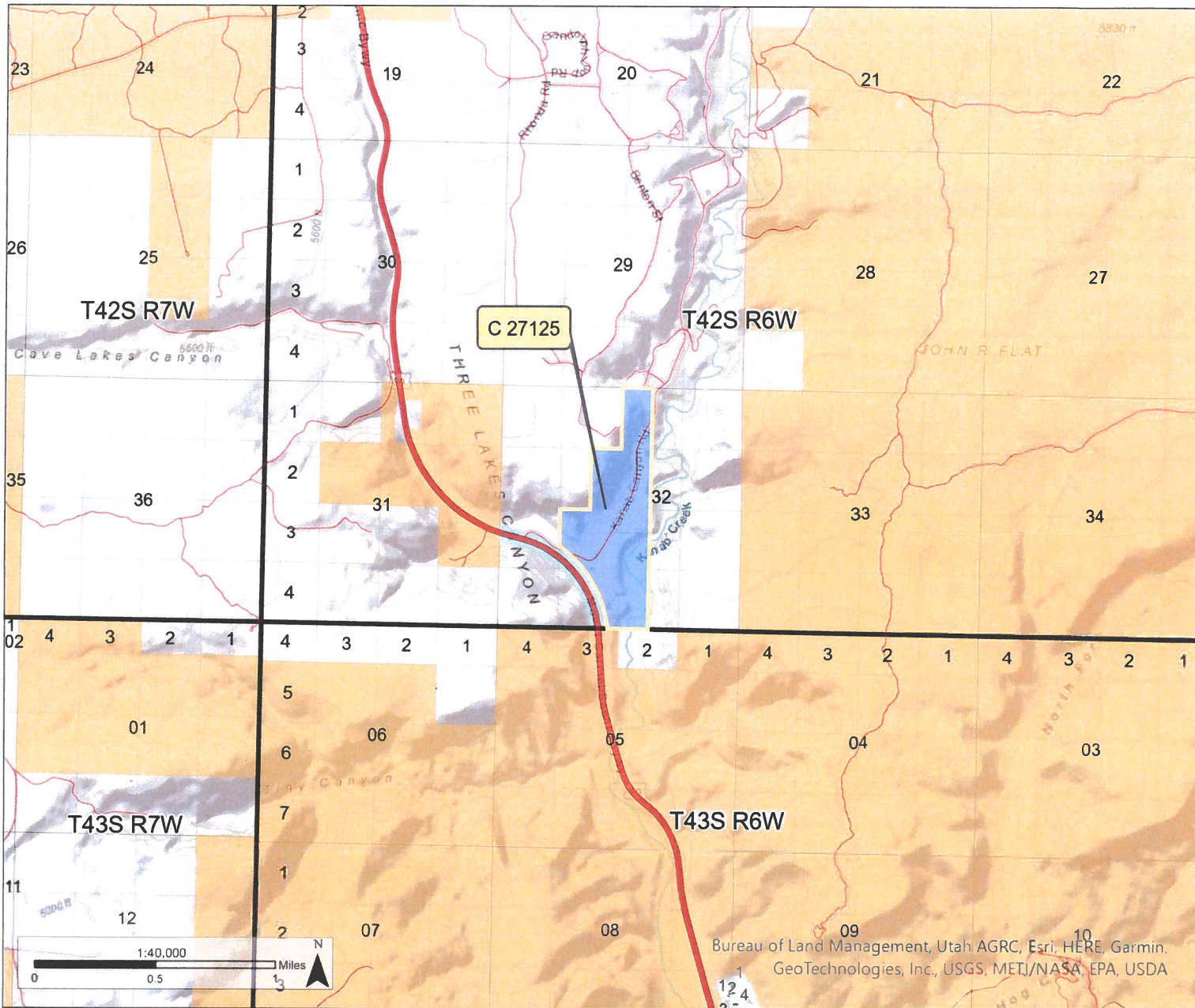
TRUST LANDS ADMINISTRATION

2031 South Industrial Park Road

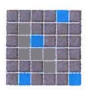
Richfield, Utah 84701

(435)896-2559

Reference No.: C 27125




Certificate Of Sale No. C 27125
 Kanab Canyon
 Within T42S R6W S32 SL
 Kane County



State of Utah
 School & Institutional
 Trust Lands Administration
 Produced 12/13/2022 SITLA

Land Ownership and Administration

- Certificate Of Sale No. C 27125 (149.77 Acres)
- Bureau of Land Management
- Private
- State Trust Lands
- Other State



NAD 1983 UTM Zone 12N
 User: nicholasw@ox

Data represented on this map is for REFERENCE USE ONLY and is not suitable for legal, engineering, or surveying purposes. Users of this information should review or consult the primary data and information sources to ascertain the usability of the information. SITLA provides this data in good faith and shall in no event be liable for any incorrect results, or any special, indirect or consequential damages to any party, arising out of or in connection with the use of or the inability to use the data hereon.

Land parcels, lease boundaries and associated SITLA data layers may have been adjusted to allow for visual "best fit". The Surface Ownership Land Status data (if present) are maintained by SITLA to reflect current trust land status and surface ownership. Lakes, rivers, streams, highways, roads, county and state boundaries are contributed by the Utah Automated Geographic Reference Center and/or other sources as specified. Contour lines (if present) were generated from USGS 10 meter DEM.

Please note: While SITLA seeks to verify data for accuracy and content, discrepancies may exist within the data. Acquiring the most updated SITLA ownership GIS data may require contacting the GIS staff directly 301-539-5100 or TLA_GIS@utah.gov. The SITLA GIS department welcomes your comments and concerns regarding the data and will attempt to resolve issues as they are brought to our attention. Color Aerial Photo (Google Imagery - 6 inch High Resolution)