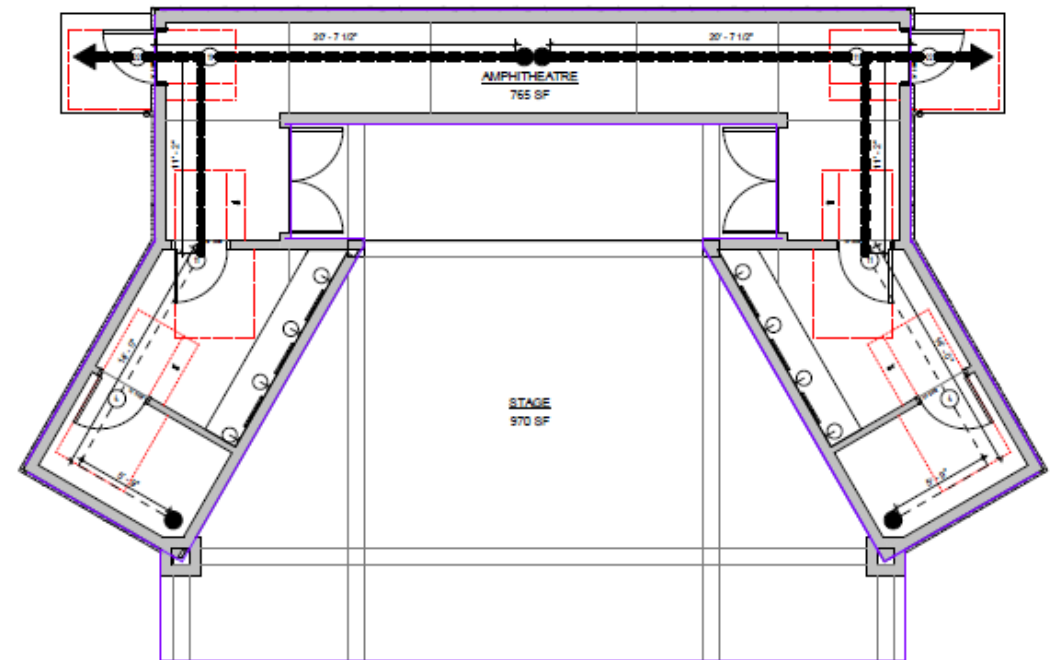
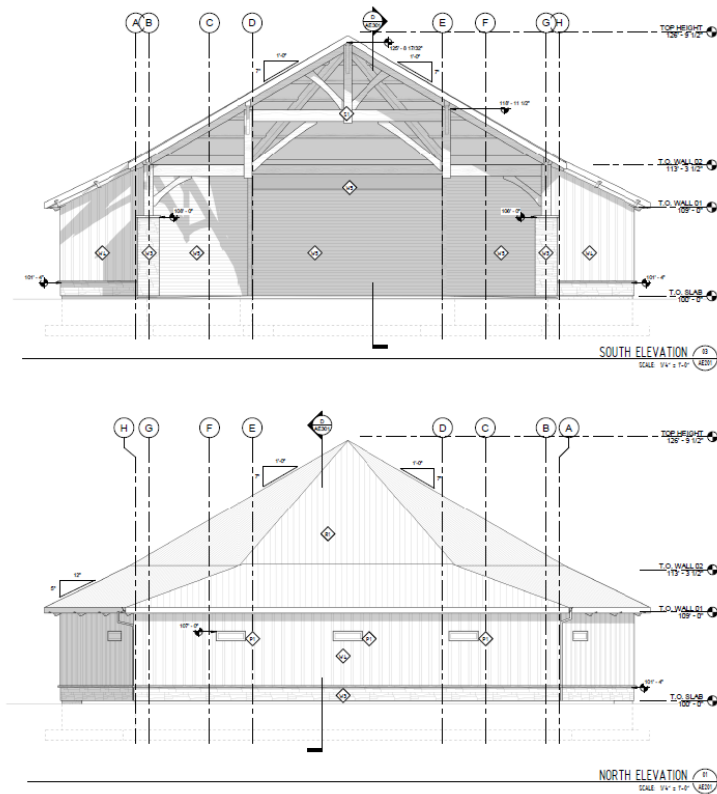


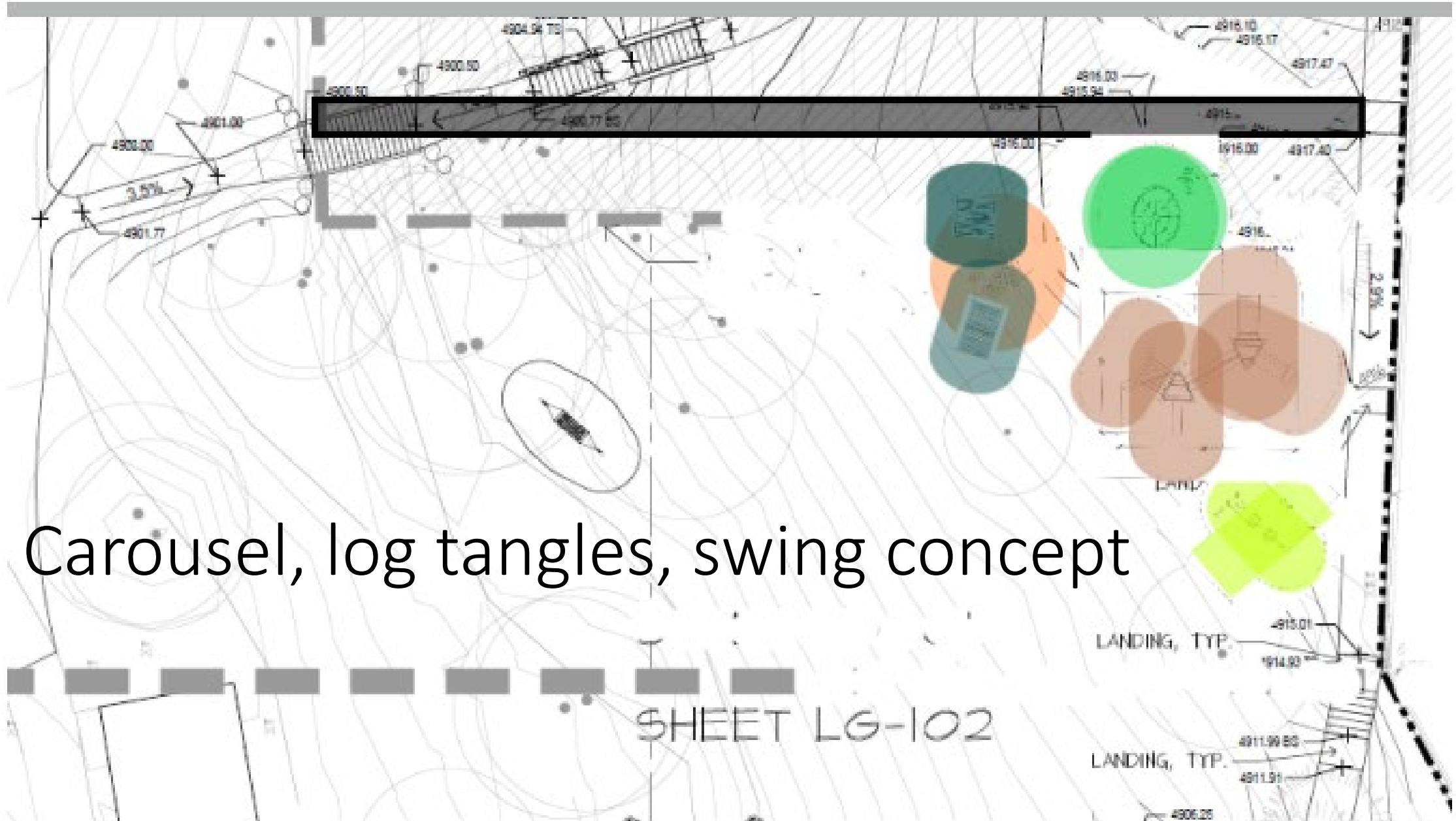
Heritage park, Golf, Event Center Updates

Architectural Amphitheater Drawings



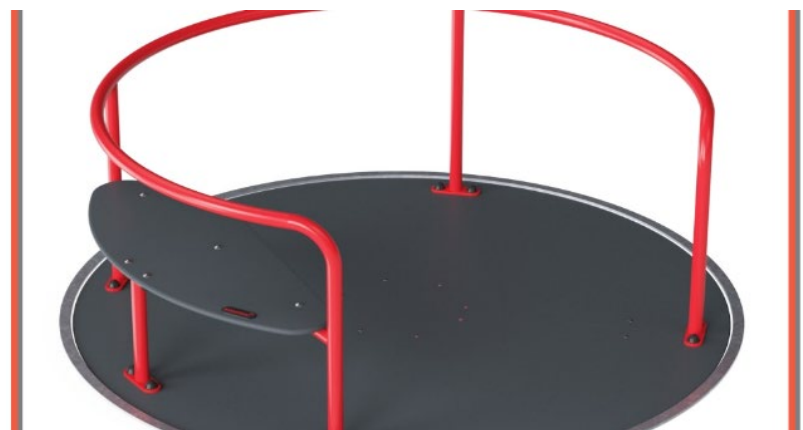
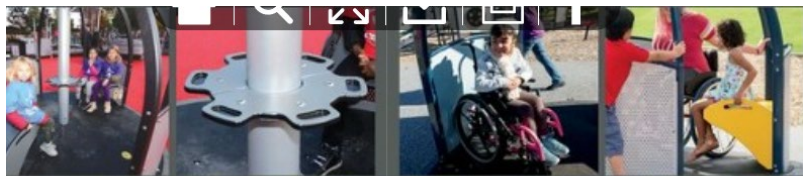
Drone view of
junior play area



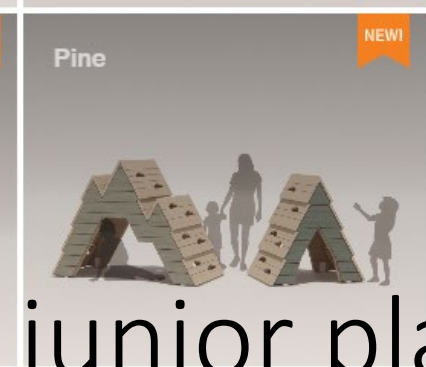
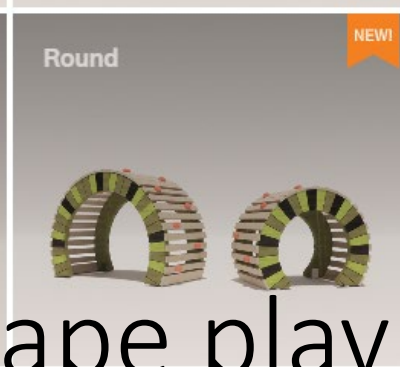


Carousel, log tangles, swing concept

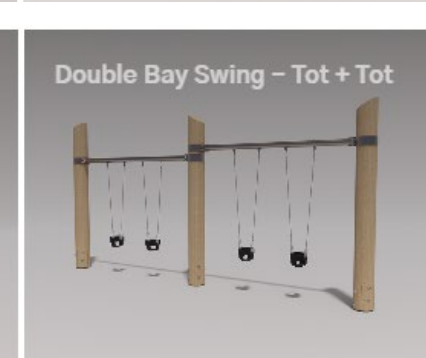
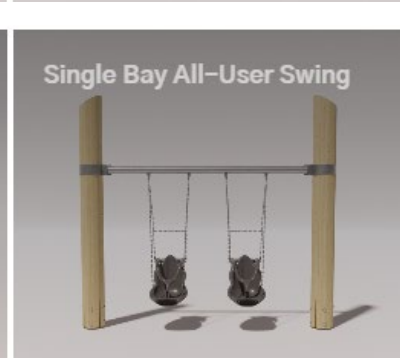
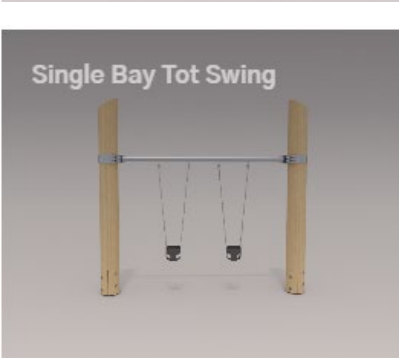
SHEET LG-102



Junior Carousel options

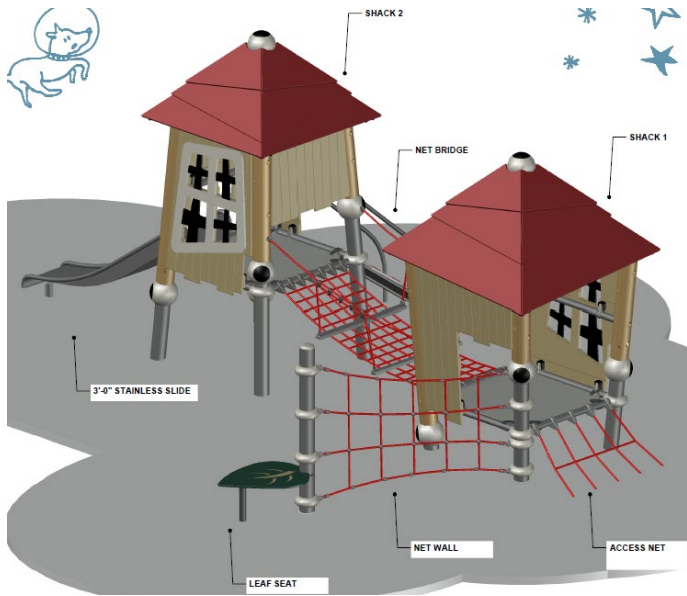


Earthscape play junior playground options





Earthscape play junior inspiration concept



Terranova.104 – Urbanplay

Berliner junior play equipment options



Kompan junior structure options



Little Turtle's Town

NRO4001 \$45,490



Little Beaver's Stream

NRO2013 \$35,080



Flower Swing

NRO0915 \$1,850



Triple Play Tower with Bridge

PCM300531 \$35,170



KOMPAN
Let's play

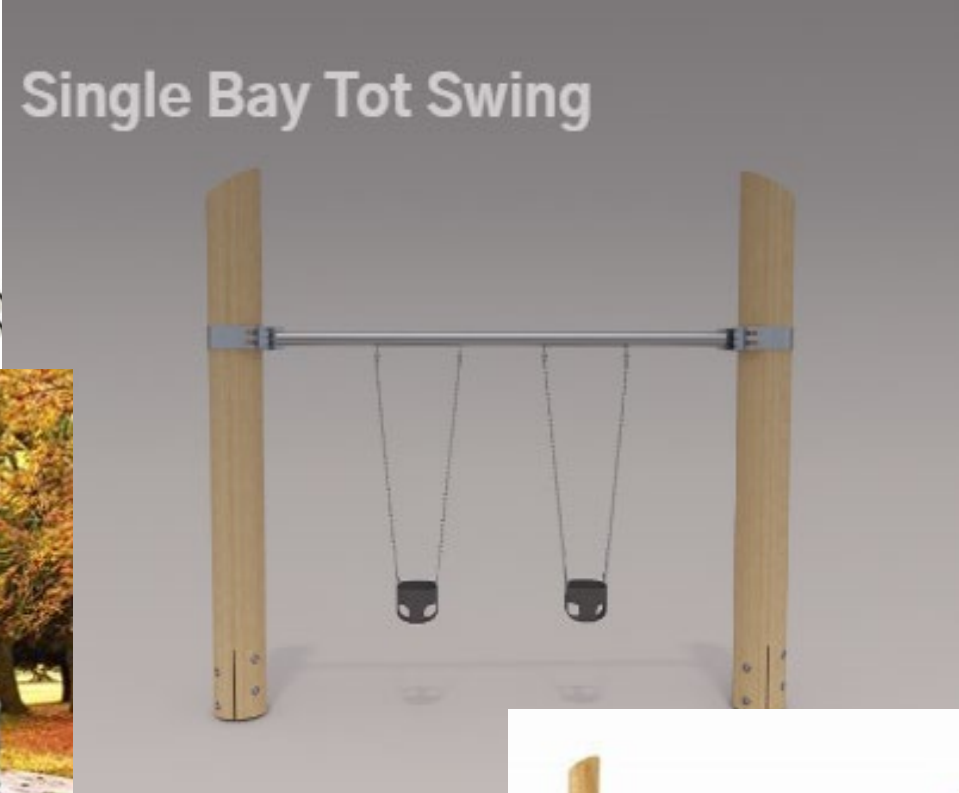


Four Towers with Tunnel

DCM100721 €28,170



Junior swing options



Heritage Park Summary

- Amphitheater materials (timber frame douglas fir, metal roof, lp siding, stone) same as restroom
 - Range architecture close to finalizing plans
 - Cost anticipated at \$300K, bids pending final plans
- Toddler playground now, so sprinklers and irrigation don't have to be done twice
 - Swing approximately \$18k plus install
 - Log tangle approximately \$58k plus install
 - Two Jr Pines \$23k and Stepper Cluster \$17k plus install
 - Carousel \$20k-\$45k plus install
- Toddler playground grading, boulders, curbing, & surfacing pending bids
 - Wood fiber would likely save \$50k
- Irrigation redo around playgrounds and west side bids pending
- Fill dirt and grading west side bids pending



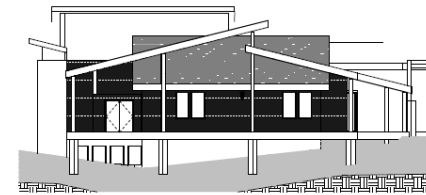
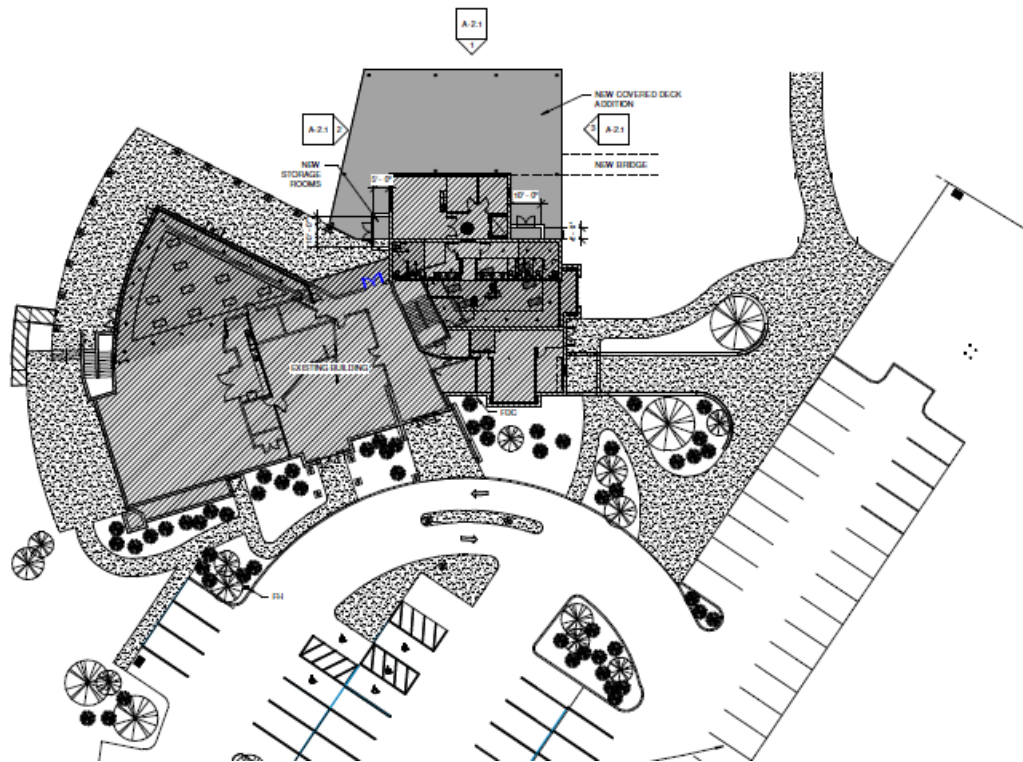
18 tee box

Legend

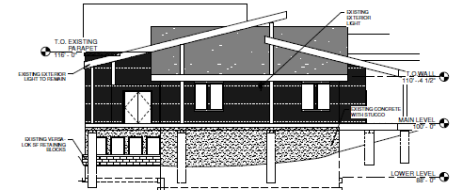
Proposed fencing around 18th tee boxes



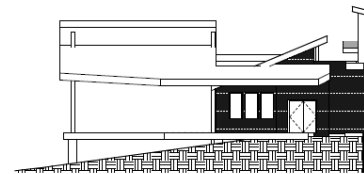
Architect's Covered Deck Concept



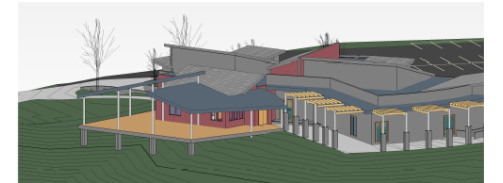
FRONT VIEW (WEST SIDE)
SCALE: 1/8" = 1'-0"



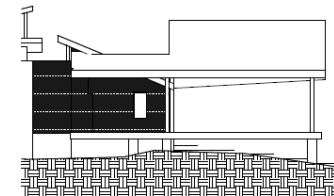
INTERIOR FRONT (EXISTING)
SCALE: 1/8" = 1'-0"



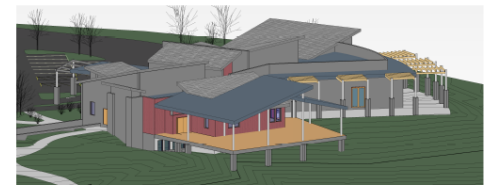
SOUTH SIDE
SCALE: 1/8" = 1'-0"



ISOMETRIC BRIDGE SW
SCALE: 1/8" = 1'-0"



NORTH SIDE
SCALE: 1/8" = 1'-0"



ISOMETRIC BRIDGE NW
SCALE: 1/8" = 1'-0"

PKJ Master plan outdoor events

PHASES 1-3 COST ESTIMATES

1

1 FOUNDATION

1. ROUGH GRADING & MOBILIZATION
2. DEMOLITION
3. ROCK RETAINING WALLS
4. ASPHALT PATHWAY
5. FLAGSTONE CHIP PATHWAY
6. STONE STEPS
7. STRUCTURAL FILL
8. TOPSOIL
9. IRRIGATION MAIN LINE
10. IRRIGATION VALVES
11. CONCRETE CUT OUT AND DEMOLITION
12. CONCRETE PLANTER
13. 2-2" ELECTRICAL CONDUIT TO PAVILION

ESTIMATE: \$ 108,487

2

2 PAVILION

1. PAVILION WITH CONCRETE PAD
2. PAVER PATHWAY
3. ELECTRICAL FOR PAVILION

ESTIMATE: \$ 81,816

3

3 IRRIGATION

1. IRRIGATION SECONDARY LINES
2. IRRIGATION DRIP TUBING
3. IRRIGATION POINT SOURCE DRIP
4. TRUEGRID GRASS PAVERS
5. SMART CONTROLLER
6. SOO

ESTIMATE: \$ 41,860



PHASES 4-6 COST ESTIMATES

4

4 PLANTINGS COST ESTIMATE

1. DECIDUOUS AND MULTI TRUNK TREES
2. EVERGREEN TREES
3. LARGE SHRUBS
4. EVERGREEN SHRUBS
5. GRASSES
6. PERENNIALS
7. GROUND COVER
8. STONE MULCH
9. 5.5" METAL EDGING
10. DECORATIVE BOULDERS
11. FOUNTAIN
12. REVEGETATION SEED MIX

ESTIMATE: \$ 119,400

5

5 PAVED GATHERING AREA

1. LEVELING
2. ROAD BASE
3. SAND
4. PERMEABLE PAVERS

ESTIMATE: \$ 39,726

6

6 SITE FURNISHINGS

1. LANDSCAPE GROUND LEVEL LIGHTING
2. FLOWER POTS
3. TRASH CANS
4. TABLES & CHAIRS
5. A/V EQUIPMENT
6. FIREPLACES AGAINST BUILDING

ESTIMATE: \$ 88,200

South path, landscaping concept





Paver path, landscaping, fountain



Pavilion, seating

Dry creek bed landscaping



Vista landscaping recommendations

- Finish funding deck seating project and public safety building updates prior to any improvements to Event Center landscaping
- If there is sufficient funding after previously committed projects, then start landscaping improvements
- Steps that may take multiple years
 - Engineer grading and finalize landscape design
 - Rough grade, demo work, and retaining walls for future seating area
 - Move irrigation valve boxes and main line out of the way
 - Replace pergola
 - Install hardscape path and pad
 - Adjust irrigation and repair grass between pavilion and building
- Anticipate several years to move through various improvements, which may cause outdoor venues to be suspended from time to time