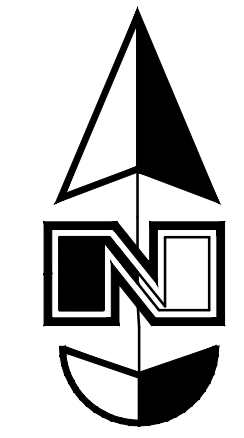
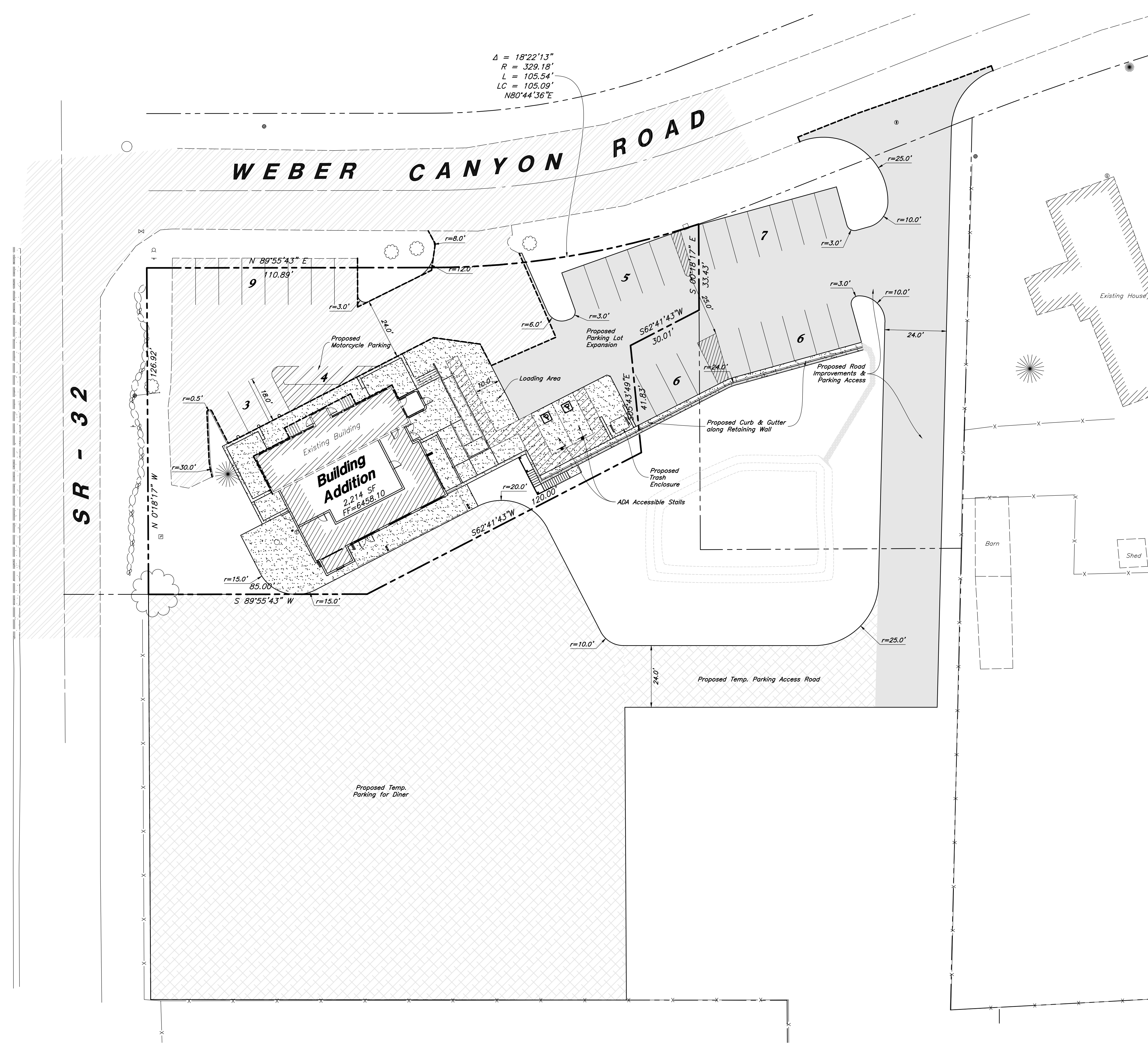


$\Delta = 18'22'13"$
 $R = 329.18'$
 $L = 105.54'$
 $LC = 105.09'$
 $N80'44'36"E$



Scale: 1" = 20'

Hatch Legend

- Asphalt Paving
- Existing Asphalt Paving
- Concrete Paving
- Existing Concrete Paving
- Building Interior
- Compacted Parking and Access Areas

Site Data

Disturbed Area = 72,103 s.f.
 Parking Provided = 37 stalls
 Motorcycle Parking Provided = 4 stalls

Designed by: EM
 Drafted by: DW
 Client Name:
 Oakley Diner
 22-056 SP

ANDERSON WAHLEN & ASSOCIATES
 2010 North Redwood Road, Salt Lake City, Utah 84116
 (801) 521-8529 - awahengineering.net

Overall Site Plan
Oakley Diner
 981 West Weber Canyon Road
 Oakley, Utah



3 June, 2022

SHEET NO. **C1.0**

\\A\22-056 Oakley Diner\dwg\32-056 SP.dwg, 6/20/2022, 8:51:57 AM, 1:1, DWG