



## South Salt Lake City Council Amended Work Meeting

Public notice is hereby given that the **South Salt Lake City Council** will hold a Work Meeting on **Wednesday, July 13, 2022** in the City Council Chambers, 220 East Morris Avenue, Suite 200, commencing at **6:00 p.m.**, or as soon thereafter as possible. The meeting can be viewed on Ustream. The link can be found on the City Council page on the City's website [sslc.com/city-government/council-meetings](http://sslc.com/city-government/council-meetings).

### CITY COUNCIL

#### MEMBERS:

LEANNE HUFF  
COREY THOMAS  
SHARLA BYNUM  
PORTIA MILA  
SHANE SIWIK  
NATALIE PINKNEY  
CLARISSA WILLIAMS

Conducting: Sharla Bynum

### MATTERS FOR DISCUSSION:

- |                                |              |
|--------------------------------|--------------|
| 1. Seven Greenways Vision Plan | Sharen Hauri |
| 2. Life on State Update        | Sharen Hauri |
| 3. Drought/Water Status        | Julie Taylor |

Adjourn

Posted July 8, 2022

Those needing auxiliary communicative aids or other services for this meeting should contact Craig Burton at 801-483-6027, giving at least 24 hours' notice.

220 E MORRIS AVE  
SUITE 200  
SOUTH SALT LAKE  
UTAH  
84115  
P 801.483.6027  
F 801.464.6770  
SSLC.GOV

CITY OF SOUTH SALT LAKE  
CITY COUNCIL WORK MEETING

COUNCIL MEETING

Wednesday July 13, 2022  
6:00 p.m.

CITY OFFICES

220 East Morris Avenue #200  
South Salt Lake, Utah 84115

PRESIDING  
CONDUCTING

Council Chair Sharla Bynum  
Council Vice-Chair Natalie Pinkney

COUNCIL MEMBERS PRESENT:

Sharla Bynum (via Zoom), LeAnne Huff, Portia Mila (via Zoom joined at 6:20 p.m),  
Natalie Pinkney, Shane Siwik (via Phone), Corey Thomas, Clarissa Williams

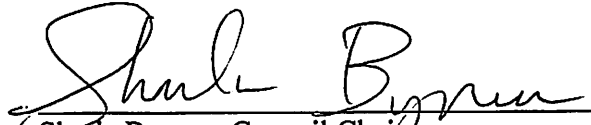
STAFF PRESENT:

Mayor Cherie Wood (via Zoom)  
Josh Collins, City Attorney (via Zoom)  
Terry Addison, Fire Chief  
Crystal Makin, Finance Director  
Sharen Hauri, Neighborhood's Director  
Christine Simonette, Homeless Outreach and Strategies Director  
Kelli Meranda, Promise South Salt Lake Director  
Julie Taylor, Communications and Outreach Director  
Craig Burton, City Recorder  
Ariel Andrus, Deputy City Recorder

**Matters for Discussion**

- 1. Seven Greenways Vision Plan.** Seven Canyon's Trust representative, Brian Tonetti, presented information about the Seven Greenways Vision Plan. A copy of the presentation is attached and incorporated by this reference.
- 2. Life on State Update.** Life of State representatives, Gene Cline, and Kent Jorgenson presented updates on the Life on State project. A copy of the presentation is attached and incorporated by this reference.
- 3. Drought/Water Status.** Communications and Outreach Manager, Julie Taylor, presented information on the current drought and water status of the City. A copy of the presentation is attached and incorporated by this reference.

The meeting adjourned at 7:01 p.m.

  
Sharla Bynum, Council Chair

  
Ariel Andrus, City Recorder







# SEVEN GREENWAYS VISION PLAN





# PLAN REVIEW

---

Review the *Seven Greenways Vision Plan* website and outline the structure and resources available.

[SEVENGREENWAYSVISIONPLAN.ORG](http://SEVENGREENWAYSVISIONPLAN.ORG)





# OPPORTUNITY AREAS

Review opportunity areas in the *Seven Greenways Vision Plan*, organized by your city.





# SOUTH SALT LAKE

Urban,  
10-Year,  
Mill

## 11. 3300 South 700 East

During redevelopment of the shopping center, daylight Mill Creek, add a trail connection, and create a public amenity.





# SOUTH SALT LAKE

Nature,  
10-Year,  
Mill

## 12. Fitts Park

Improve water quality through green infrastructure, restore riparian habitat and the floodplain, and enhance recreation along Mill Creek in the park.





# SOUTH SALT LAKE

Community,  
10-Year,  
Mill

## 13. 200 East to 200 West

Create a linear urban park along Mill Creek with trails, natural space, amenities, public art, and signage.





# 2000 E TO 2000 W



-  OPEN CHANNEL
-  BURIED CHANNEL
-  EXISTING TRAIL
-  PROPOSED TRAIL
-  OPPORTUNITY AREA
-  PARKS

SOUTH SALT LAKE, UT





# SOUTH SALT LAKE

Community,  
100-Year,  
Mill

## 14. Interstate-15 Crossing

Create a pedestrian crossing over Interstate-15 along Mill Creek to connect recreational access and east-west communities.





# SOUTH SALT LAKE

Nature,  
10-Year,  
Mill

## 15. Mill Creek Confluence

Restore riparian habitat, improve water quality through wetlands, and provide recreation connections to the Jordan River Trail.





# TOOLBOX

---

## • Best Management Practices





# TOOLBOX

---

- **Best Management Practices**
- **Design Guidelines**





# TOOLBOX

---

- **Best Management Practices**
- **Design Guidelines**
- **Funding**





# TOOLBOX

---

- **Best Management Practices**
- **Design Guidelines**
- **Funding**
- **Policy Recommendations**





# TOOLBOX

---

- **Best Management Practices**
- **Design Guidelines**
- **Funding**
- **Policy Recommendations**
- **Partnerships**

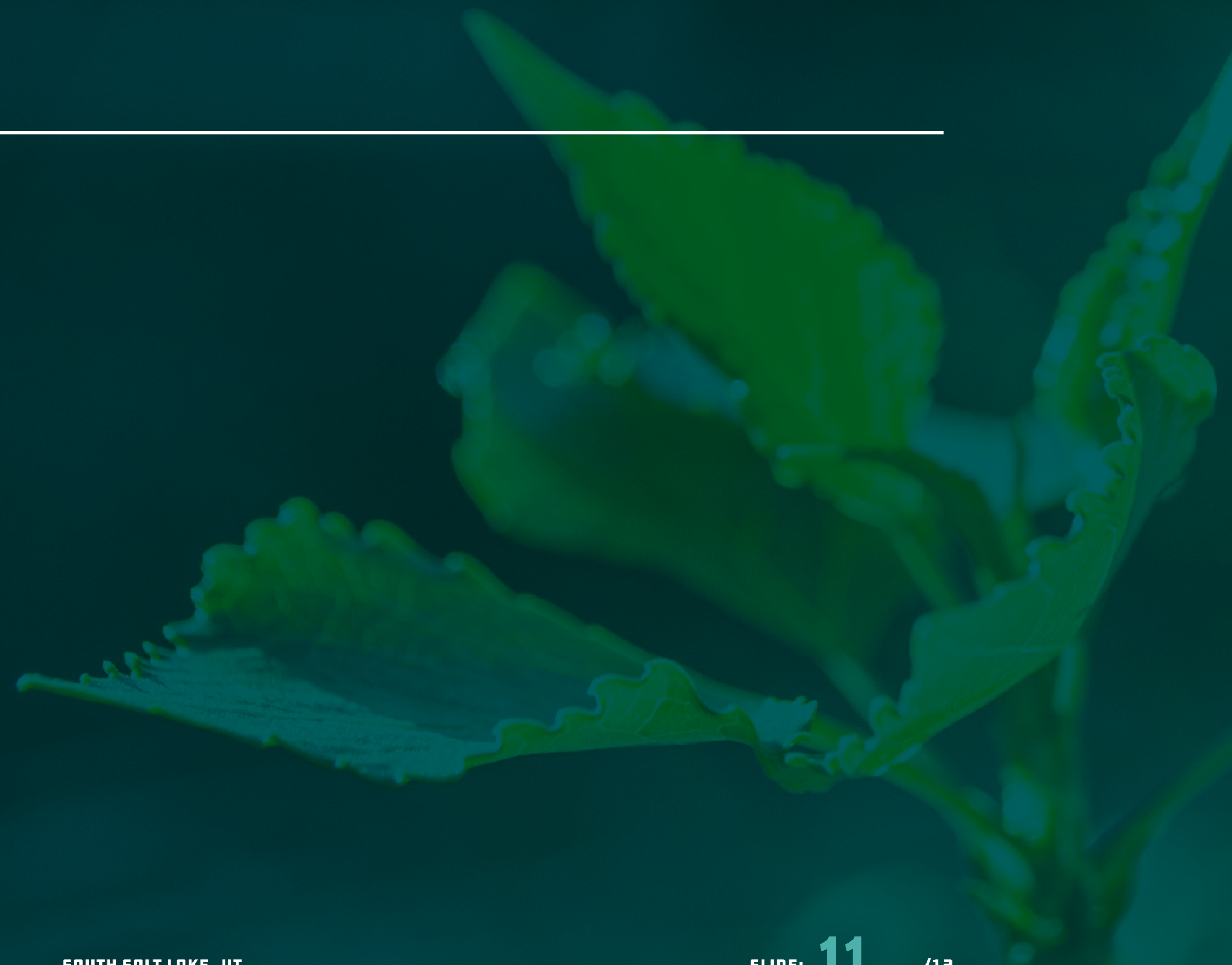




# POLICY

---

## Plan Alignment







# POLICY

---

- Plan Alignment
- Riparian Corridor Ordinance







# POLICY

---

- Plan Alignment
- Riparian Corridor Ordinance
- Developments







# POLICY

---

- Plan Alignment
- Riparian Corridor Ordinance
- Developments
- Creek-Friendly Certification





# POLICY

---

- Plan Alignment
- Riparian Corridor Ordinance
- Developments
- Creek-Friendly Certification
- Transfer of Development Rights





# POLICY

---

- Plan Alignment
- Riparian Corridor Ordinance
- Developments
- Creek-Friendly Certification
- Transfer of Development Rights
- Property Acquisition





# QUESTIONS

---





**Life on State – 2100 South to I-80**  
**City Council Meeting Agenda**  
**7/13/2022**

**1. *Introductions & Roles***

**2. *Project Goals***

- a. Introducing the Life on State implementation plan, and Strategic mobility plan consistent with SSL's 2040 General Plan.
- b. **Improve walkability**, and safety through sidewalk and pedestrian improvements and amenities.
- c. **Enhance urban forestry** by planting trees and droughts tolerant plants in key areas. Add planted medians where feasible.
- d. **Improve storm water drainage** throughout project area with the possible inclusion of storm water planters.
- e. **Realign Parley's Trail crossing** to remove crosswalk skew and shorten crossing distance.
- f. Maintain existing lighting along State Street corridor.
- g. **Improve safety** with traffic calming measures including curb extensions at side streets and State Street travel lane width reduction where feasible.

**3. *Concept Layout Discussion***

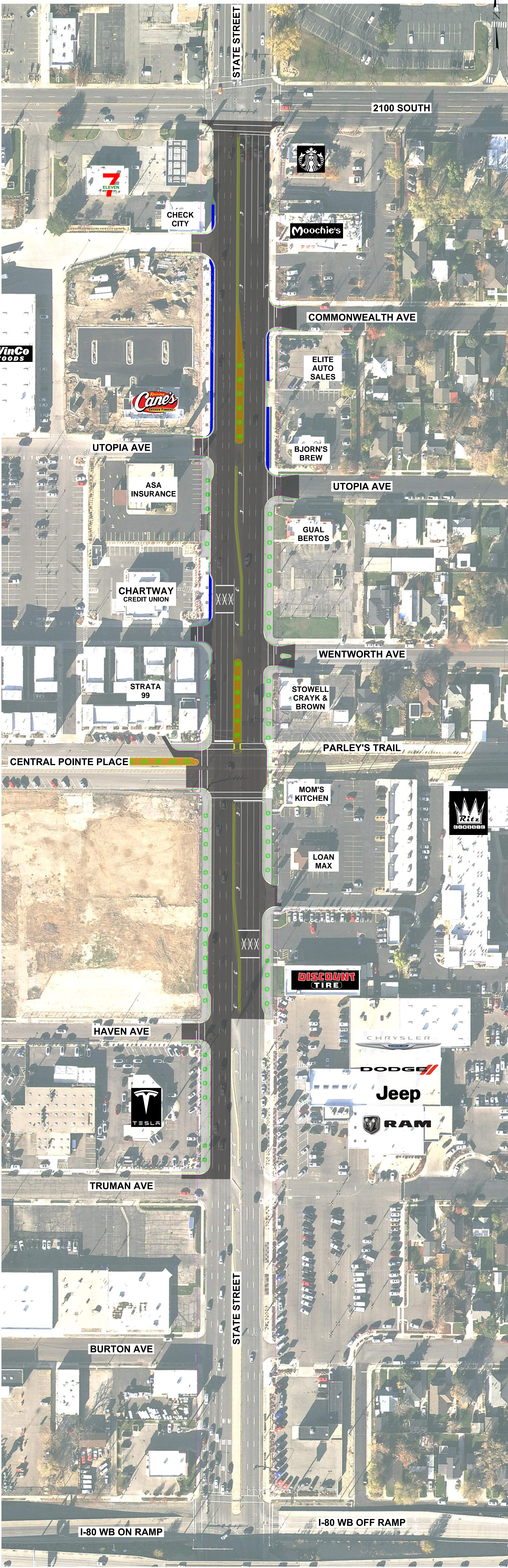
**4. *Public Involvement***

- a. Public Involvement Activities to date – Flyer, one-on-one meetings with businesses
- b. Upcoming Public Involvement Activities – Continued one-on-one engagement, summer events, Nigh Out Central Park (8/2)

**5. *Schedule***

- a. Second Meeting with City Council in August
- b. Continued Public Involvement
- c. Prepare Design Plans – August to October
- d. Advertise in Fall





STATE STREET

2100 SOUTH

CHECK CITY



Moochie's

COMMONWEALTH AVE

WinCo  
FOODS



UTOPIA AVE

ELITE  
AUTO  
SALES

BJORN'S  
BREW

ASA  
INSURANCE

UTOPIA AVE

CHARTWAY  
CREDIT UNION

GUAL  
BERTOS

WENTWORTH AVE

STRATA  
99

STOWELL  
CRAYK &  
BROWN

CENTRAL POINTE PLACE

PARLEY'S TRAIL

MOM'S  
KITCHEN



LOAN  
MAX

DISCOUNT  
TIRE

HAVEN AVE



CHRYSLER

DODGE

Jeep

RAM

TRUMAN AVE

STATE STREET

BURTON AVE

I-80 WB ON RAMP

I-80 WB OFF RAMP



# STATE STREET ROAD IMPROVEMENTS

2100 SOUTH TO I-80



LIFE ON STATE  
2100 SOUTH TO I-80

## PROJECT DESCRIPTION

State Street runs through the heart of downtown South Salt Lake (SSL). As the downtown area expands, it is growing SSL into an important center for residential and commercial activity. Today, this section of State Street is home to important civic institutions, small businesses, residents, and unique dining. Green space is more accessible with the use of Parley's Trail, and an additional mode of transportation is now available through UTA's S-Line.

This year, SSL is taking action to restore the vitality of State Street – identified in the General Plan 2040 – between 2100 South and I-80. Critical investments in the streetscape and pedestrian environment will begin to transform State Street's identity, encourage neighborhood pride, and restore State Street as the iconic gateway to SSL.

## PROJECT GOALS

*Introducing the Life on State Implementation Plan and Strategic Mobility Plan consistent with SSL's 2040 General Plan.*

- **Upgrade walkability and pedestrian safety** through sidewalk and improvements and amenities. Actions include repurposing portions of the shoulders to increase pedestrian space and adding curb extensions to shorten crossing distances at side streets.
- **Enhance urban forestry** by planting trees and drought tolerant plants. Add planted medians where feasible.
- **Maintain existing lighting** along State Street corridor.
- **Refine stormwater drainage** throughout project area with the possible inclusion of storm water planters.
- **Realign Parley's Trail Crossing** to remove crosswalk skew and shorten crossing distance.
- **Improve safety** with traffic calming devices to reduce speed.
- **Build on intersection and crosswalks** using curb extensions and raised medians for pedestrian safe havens.

*The City looks forward to working with property owners, businesses, and the public to ensure State Street is safe for all users. Our goal is to encourage our economically prosperous, culturally diverse community that, strengthens neighborhoods.*

## Feedback

To provide feedback, please email our team: [Lifonstatessl@gmail.com](mailto:Lifonstatessl@gmail.com)

## More Info

For more information, please contact our project team: [\(435\) 265-1989](tel:4352651989)



# STATE STREET; 2100 SOUTH TO I-80

What are your thoughts of the proposed improvements suggested on this corridor?

---

---

How would you rank improvements in order of preference? (1 being the most preferred to 11 being the least preferred)

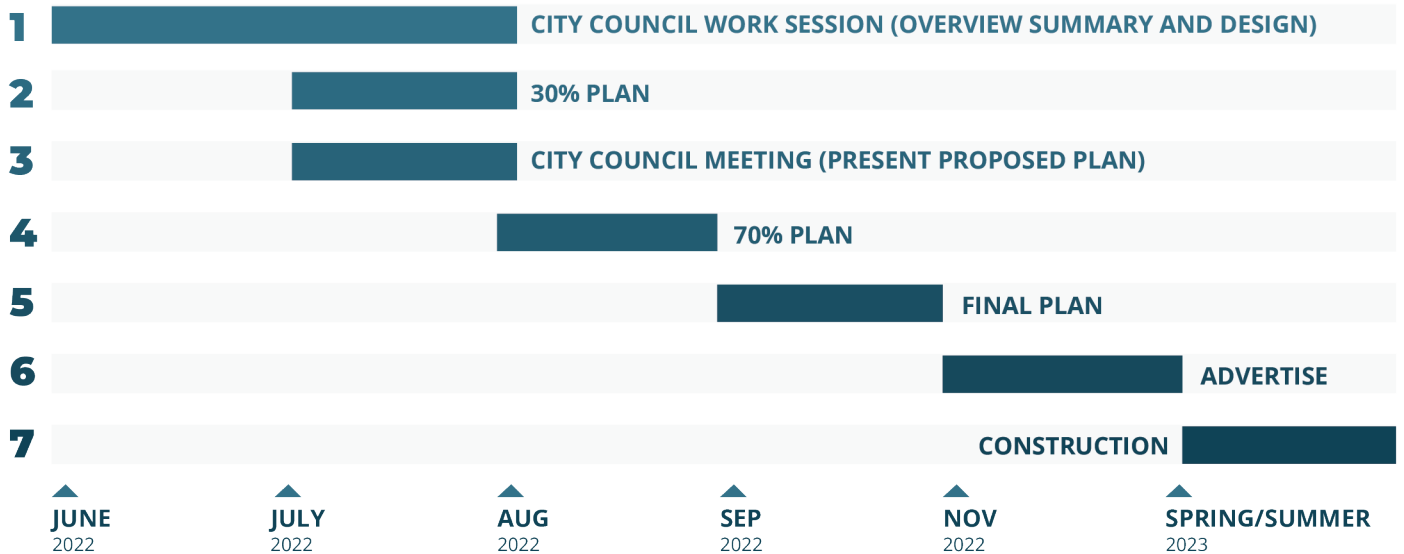
- General appearance of the corridor
- Walkability
- Safety
- Pedestrian improvement and amenities (wider sidewalks, improved crosswalks, center medians to shorten space between east and west sides of State Street).
- Urban forestry
- Storm water drainage improvements
- Parley's Trail Crossing improvements
- Street lighting along State Street
- Curb extensions at side streets
- Reduce lane width where feasible along State Street to help reduce speed
- Other

Other Description: \_\_\_\_\_

---

---

## Proposed Schedule



*South Salt Lake would love to get your feedback, thoughts, and comments on these important proposed improvements along State Street, 2100 South to I-80.*

## Feedback

To provide feedback, please email our team: [Lifonstatessl@gmail.com](mailto:Lifonstatessl@gmail.com)

## More Info

For more information, please contact our project team: [\(435\) 265-1989](tel:435-265-1989)



2022

# DROUGHT CONDITIONS



Presented by Julie Taylor

# SERVICE

- 2100 South to 3300 South
- 3,500 connections & 550 hydrants
- 51+ miles of pipe
- Users
  - Municipal
  - Residential
  - Commercial, Industrial, Construction

## Outdoor Irrigation

Each watering should  
apply 1/2" of water

**Rotor Head**  
40 minutes



**Spray Head**  
20 minutes



**We are here**

**MODERATE**

**1**

**Irrigation  
2 times  
per week**

**Reduction  
Target  
Voluntary  
5-10%**

**SEVERE**

**2**

**Irrigation  
1 times  
per week**

**Reduction  
Target  
Highly  
Recommend  
10-20%**

**EXTREME**

**3**

**Irrigation  
2 time  
per month**

**Reduction  
Target  
Mandatory  
20-30%**

**CRITICAL**

**4**

**Irrigation  
none**

**Reduction  
Target  
Mandatory  
30-50%**

## **MODERATE**

**1**

**Irrigation  
2 times  
per week**

**Reduction  
Target  
Voluntary  
5-10%**

### **All**

- Water between 8 p.m. - 8 a.m.
- Avoid hard surface use

### **Residential**

- Avoid recreational use

### **Municipal**

- Limit Hydrant Flushing
- All eyes on water waste

### **Commercial, Industrial, Construction**

- Limit/Delay new sod/seed/landscaping
- High utilizer and leak detection notifications



**SEVERE**

**2**

**Irrigation  
1 times  
per week**

**Reduction  
Target  
Highly  
Recommend  
10-20%**

**All**

- Prioritize: trees, shrubs, perennials, annuals, turf/grass

**Residential**

- Limit water features and pools

**Municipal**

- Explore administrative/legislative actions
  - Water Use Limitations 13.52.050
  - Special/Temporary Rates
  - Restrictions 13.60.020

**Commercial, Industrial, Construction**

- Limit during peak times
- Expand education

**EXTREME**

**3**

**Irrigation  
2 time  
per month**

**Reduction  
Target  
Mandatory  
20-30%**

**All**

- Outdoor watering per published schedule

**Residential**

- Limit car washing to facilities that recycle water

**Municipal**

- Enact limitations, rate increase, enforcement
- Limit Fire Training w/ water
- Fleet washing - health/safety only

**Commercial, Industrial, Construction**

- Surcharge



**CRITICAL**

**4**

**Irrigation  
none**

**Reduction  
Target  
Mandatory  
30-50%**

**All**

- Prohibit outdoor watering

**Residential**

- Prohibit new landscaping

**Municipal**

- Expand limitations, rate increase, enforcement

**Commercial, Industrial, Construction**

- Restrictions