



MAG

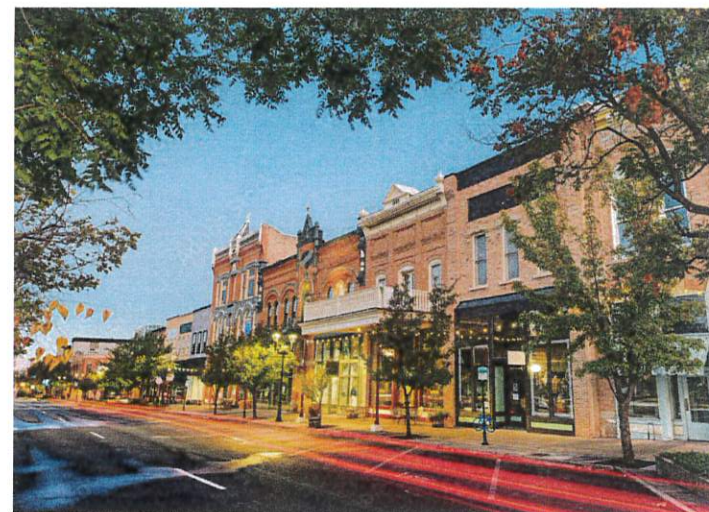
Expert Resources. Enriching Lives.

TAG PROGRAM

Technical assistance is available to local governments throughout Utah, Summit, and Wasatch Counties for a wide range of plans and studies that integrate transportation and land use. Competitive projects will proactively plan for growth and support the the long-range regional vision, [Wasatch Choice Vision](#), and transportation plan, [TransPlan50](#).

MAG's Technical Assistance to Governments (TAG) Program, created with support from UDOT and UTA, aims to:

- Create communities with opportunities to live, work, and play
- Maximize the value of investment in public infrastructure
- Increase travel options to optimize mobility



Sample Project Types	Project Size	Technical Assistance	Match	Eligible Applicants
<ul style="list-style-type: none">• Small-area plans/studies• Zoning ordinance/policy updates• Coordinated Housing and Transportation plans• Project-area studies/analyses• Other visioning efforts, plans, or studies that improve access to transit, active transportation, and reduce traffic on roads	Determined on a case-by-case basis (please consult with MAG staff)	<ul style="list-style-type: none">• Assistance will be provided in the form of consultant services• Consultants will be selected by the applicant from a pool of pre-qualified consultants.• MAG will contract with the consultant on behalf of the grantee, who will serve as the project manager	Awardees will need to provide a minimum financial match of 7%	Local governments in Utah, Summit, and Wasatch Counties

Pre-application letters of intent due **September 29, 2022** Final applications due **December 8, 2022**

See mountainland.org/tag for additional information and application instructions