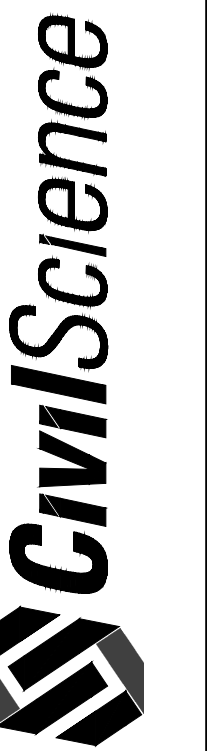
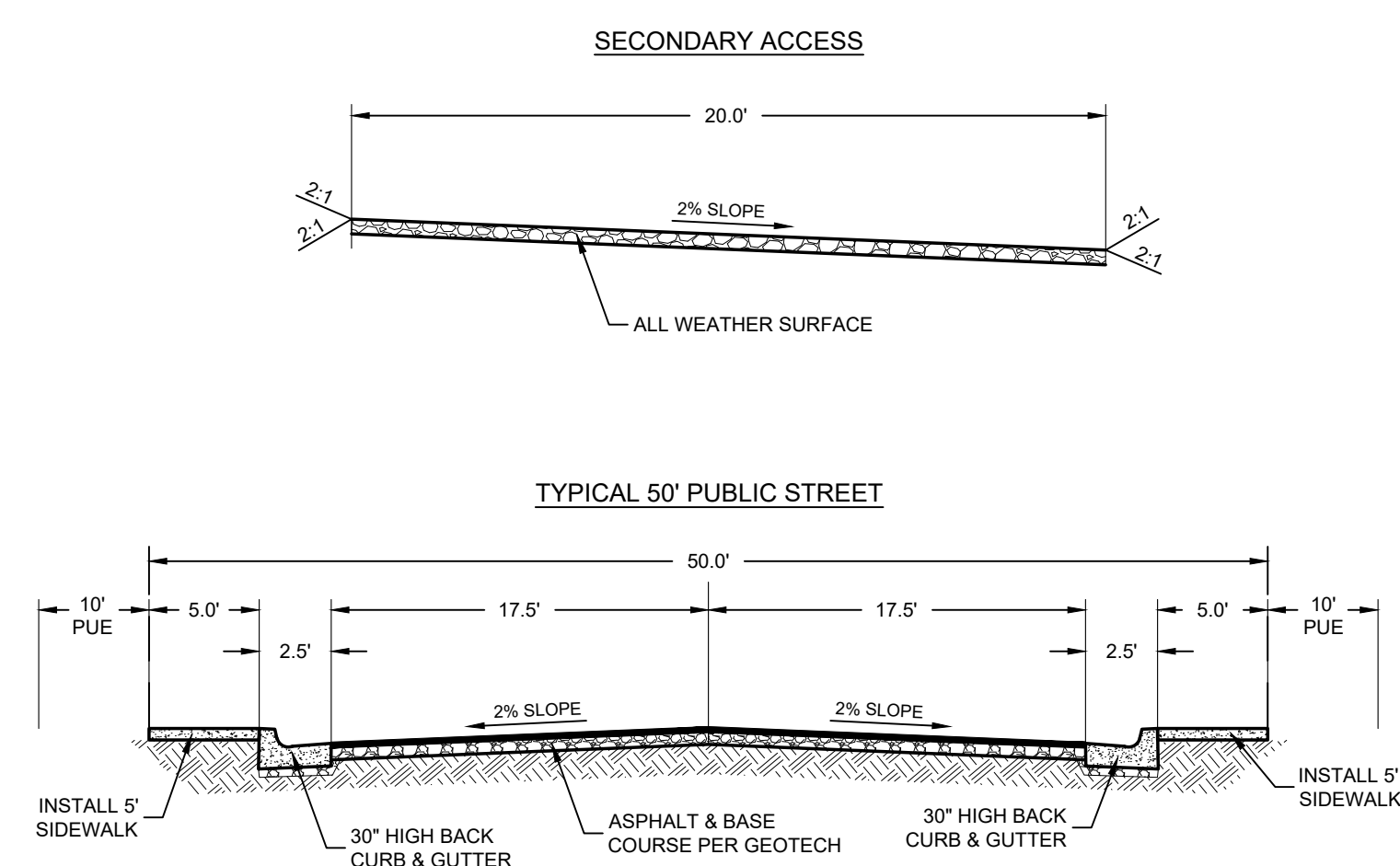
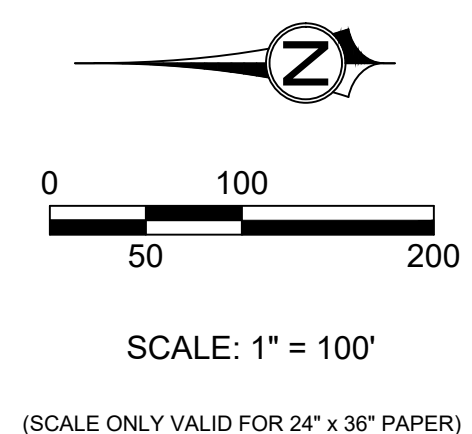
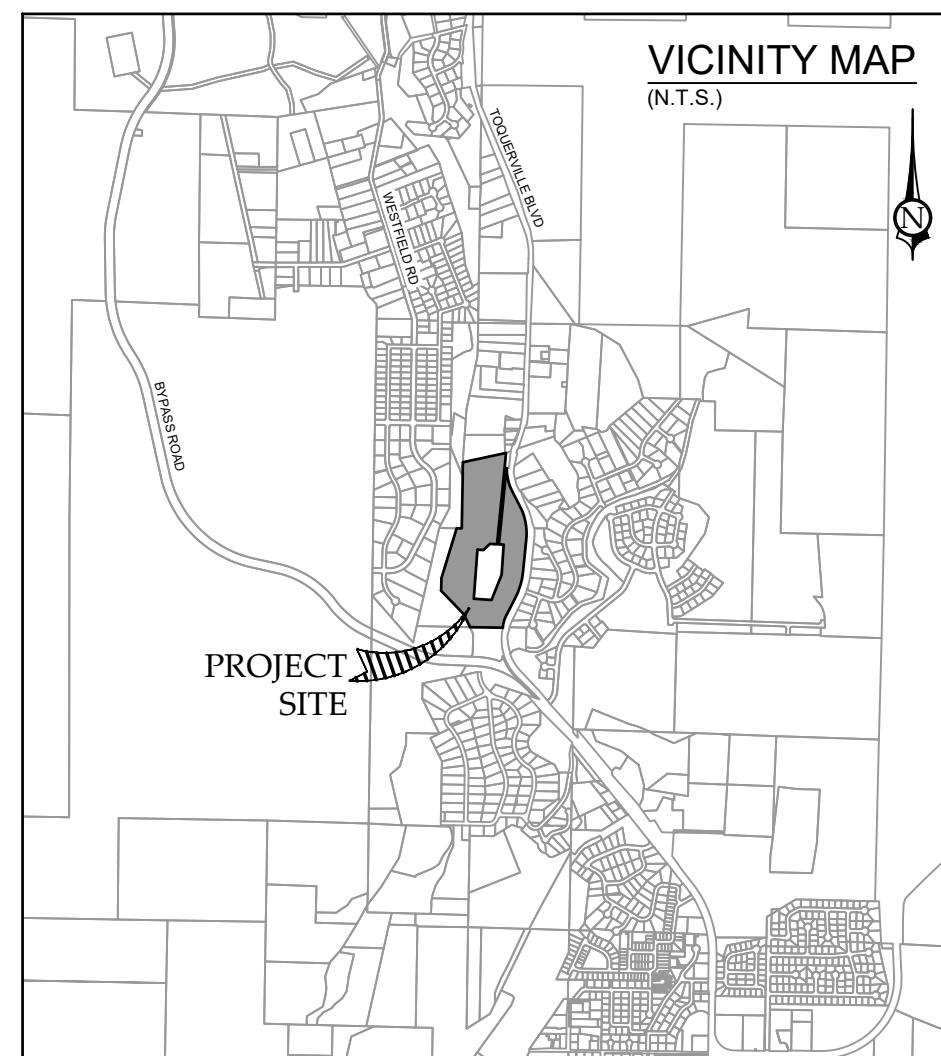


1453 S. DIXIE DRIVE, SUITE 150  
ST. GEORGE, UT 84770  
435.986.0100



ASH BLUFF  
PRELIMINARY PLAT  
LOCATED IN TOQUERVILLE, UTAH



- LEGEND**
- EXISTING CONTOUR (2' INTERVAL)
  - PROPOSED CONTOUR (2' INTERVAL)
  - - - - - EXISTING FLOW LINE (ASH CREEK)

**PRELIMINARY PLAT  
ASH BLUFF**

LOCATED IN  
SECTION 14, TOWNSHIP 41 SOUTH, RANGE 13 WEST,  
SALT LAKE BASE AND MERIDIAN  
WASHINGTON COUNTY - TOQUERVILLE, UTAH

PROJ. #	21312.00
DRAWN BY	BLW
DATE	3/24/2022
CHECKED BY	
SCALE OF SHEET	HOR SCALE: 1" = 100'
SHEET	2
OF	2