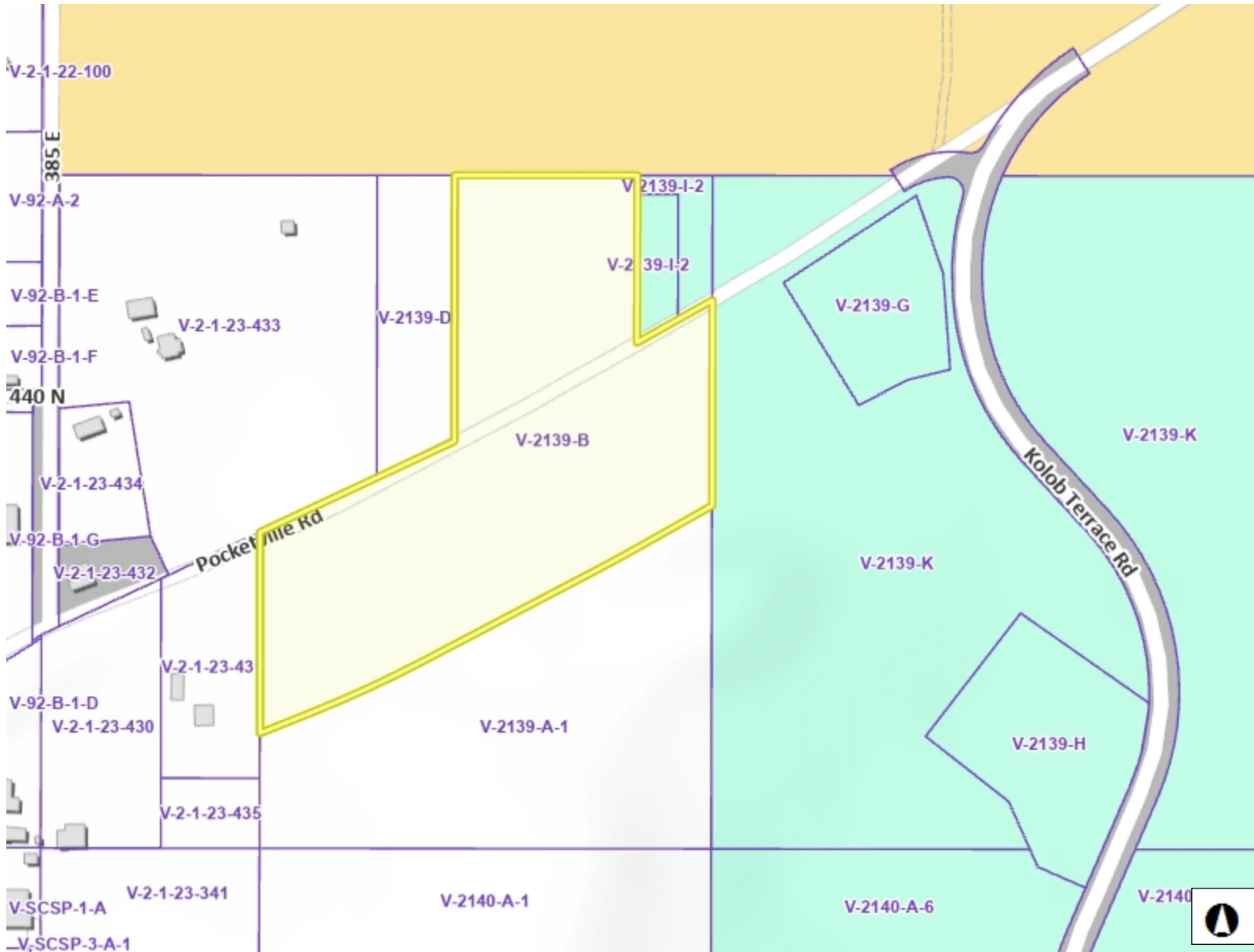




# Title



## Legend

- Parcels
- Ownership
  - U.S. Forest Service
  - U.S. Forest Service Wilderness
  - Bureau of Land Management
  - Bureau of Land Management Wilde
  - National Park Service
  - Shivwits Reservation
  - Utah Division of Wildlife Resources
  - Utah Division of Transportation
  - State Park
  - State of Utah
  - Washington County
  - Municipally Owned
  - School District
  - Privately Owned
  - Water
  - Water Conservancy District
  - State Assessed Oil and Gas
  - Mining Claim

## Notes

752.3 0 376.17 752.3 Feet

WGS\_1984\_Web\_Mercator\_Auxiliary\_Sphere

**DISCLAIMER:** The information shown on this map was compiled from different GIS sources. The land base and facility information on this map is for display purposes only and should not be relied upon without independent verification as to its accuracy. Washington County, Utah will not be held responsible for any claims, losses or damages resulting from the use of this map.