



Title



Legend

Parcels

Ownership

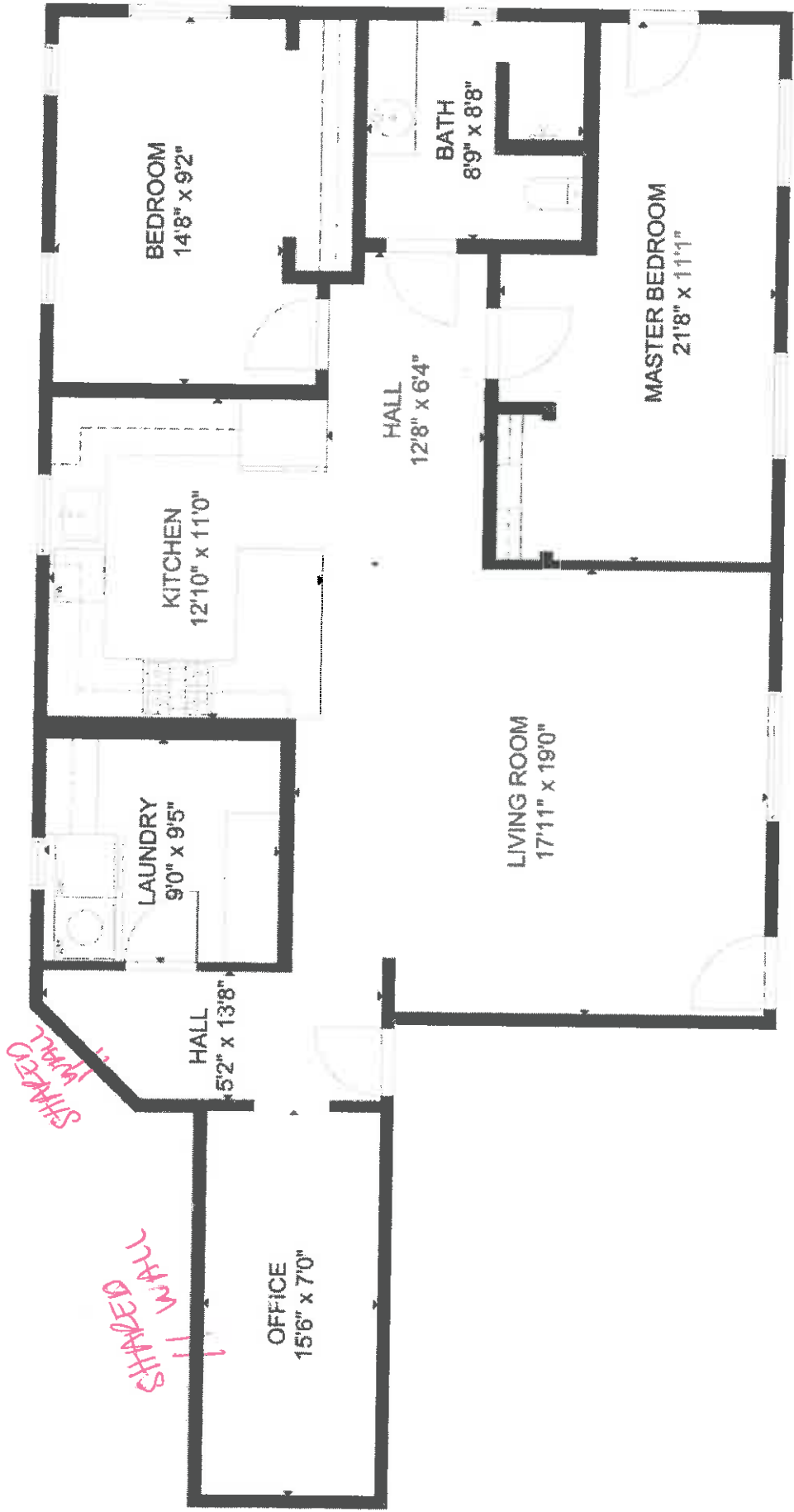
- U.S. Forest Service
- U.S. Forest Service Wilderness
- Bureau of Land Management
- Bureau of Land Management Wildlife
- National Park Service
- Shiwiits Reservation
- Utah Division of Wildlife Resources
- Utah Division of Transportation
- State Park
- State of Utah
- Washington County
- Municipally Owned
- School District
- Privately Owned
- Water
- Water Conservancy District
- State Assessed Oil and Gas
- Mining Claim

Notes

DISCLAIMER: The information shown on this map was compiled from different GIS sources. The land base and facility information on this map is for display purposes only and should not be relied upon without independent verification as to its accuracy. Washington County, Utah will not be held responsible for any claims, losses or damages resulting from the use of this map.



Casita

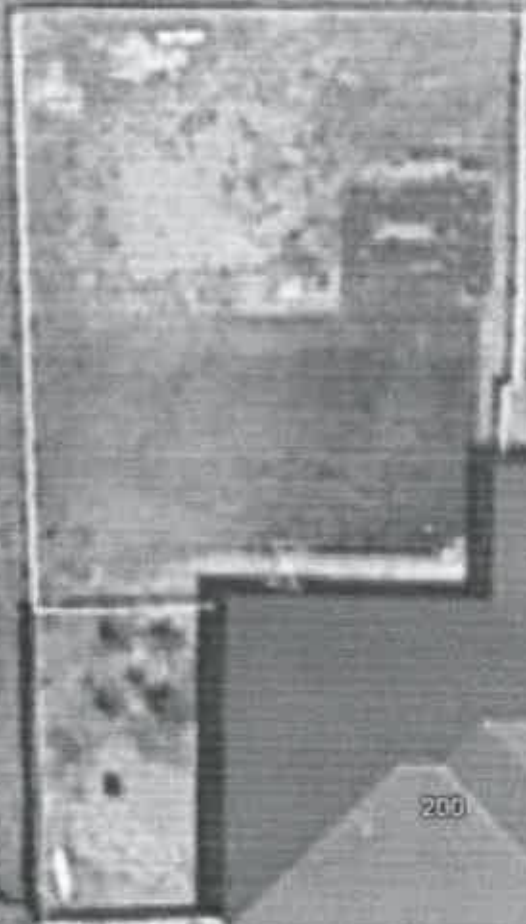


EXCESS UTILITY AREA
*36" x 12'0" x 5'
*10'0" x 12'0" x 5'

Main house

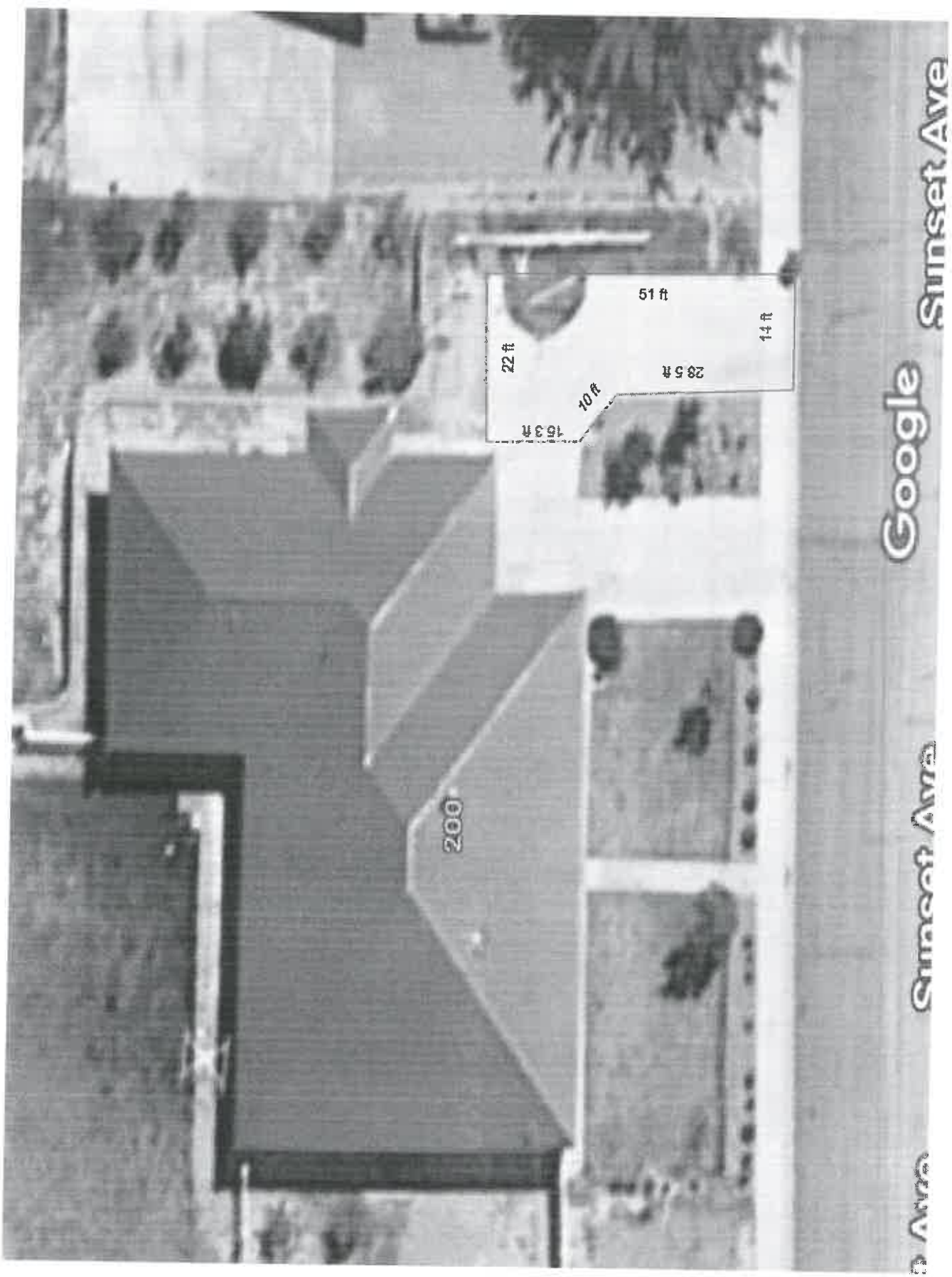


©2023 Pulte Homes, LLC
10750 E. East Ave.
Aurora, CO 80015



Sunset Ave

Sunset Ave



Received

Griddens 200 W Sunset Ave