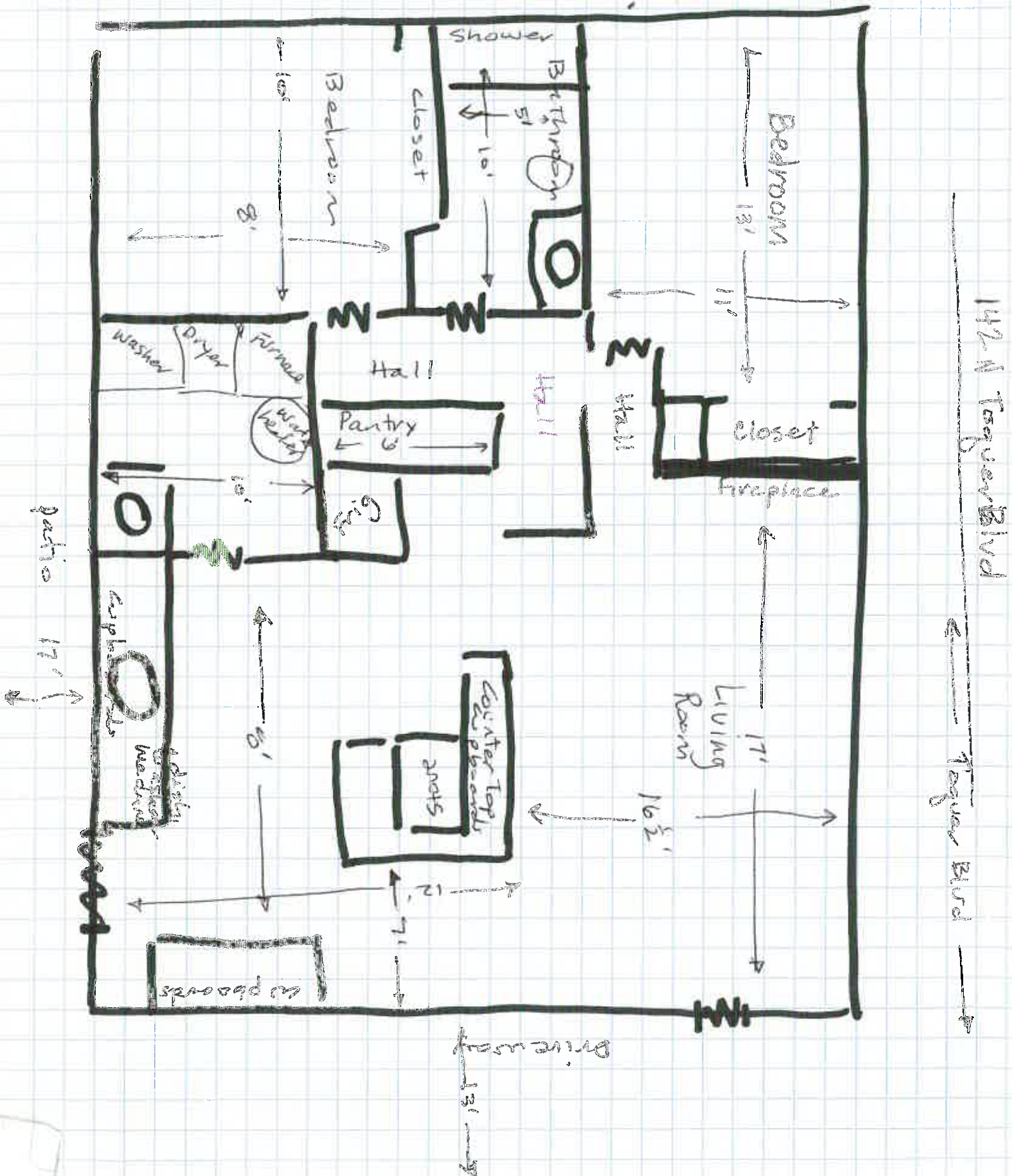


# Floor Plan of Dwelling





# Merkling 142N Parking

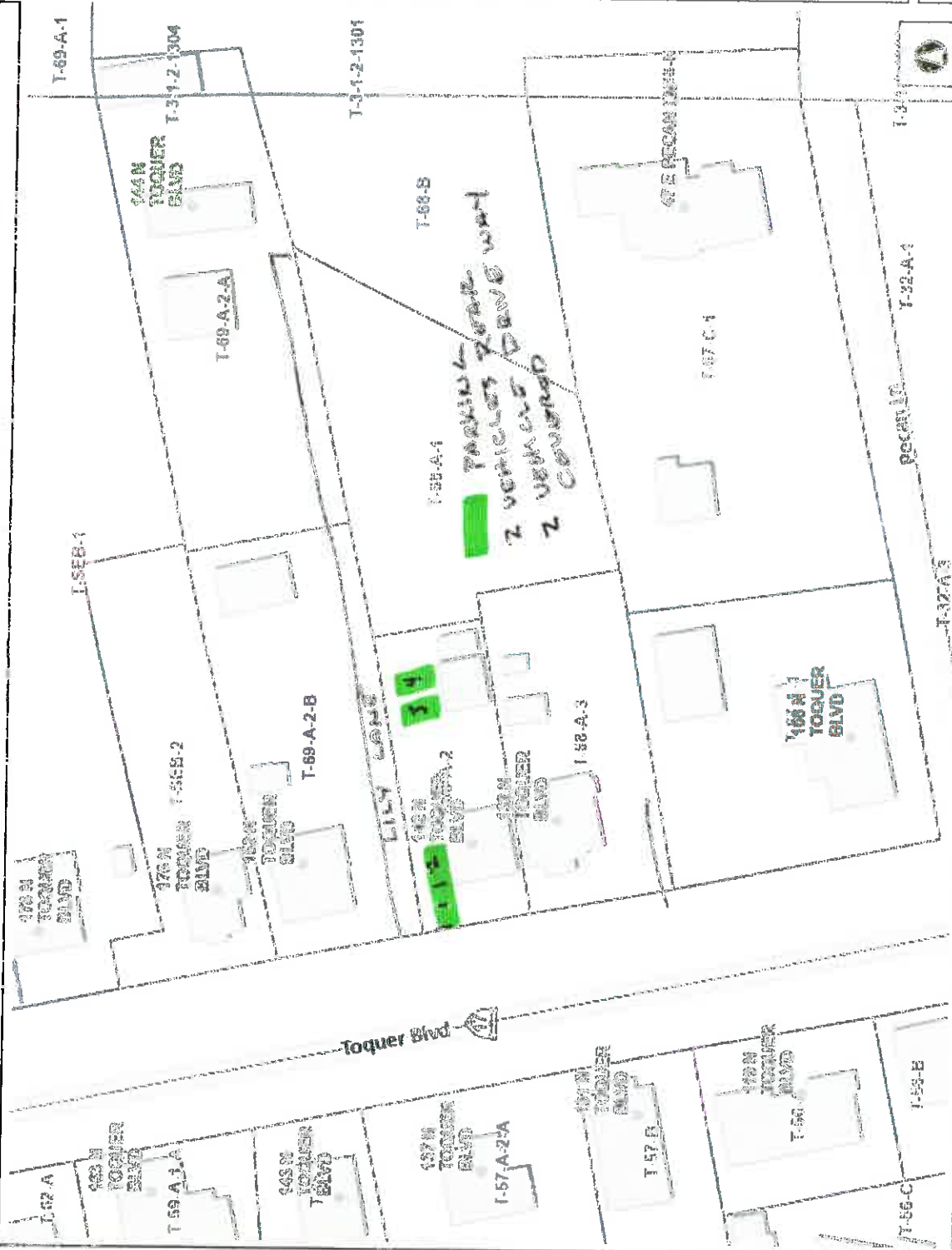
Code City

21 George

**Legend**

- Address Points
- Reserve
- Streets
- Interests
- Color Freeways and Expressways
- Major Collector
- Minor Collector
- Municipal Arterial
- Minor Arterial
- Local
- Unimproved
- Ownership
- U.S. Forest Service
- U.S. Forest Service Bufferzone
- Bureau of Land Management
- Bureau of Land Management Wild
- National Park Service
- National Park Service
- State Parks Reservoir
- Utah Division of Wildlife Resources
- Utah Division of Transportation
- Natio Park
- State of Utah
- Washington County
- Municipally Owned
- School District
- Privately Owned

**Notes**



**DISCLAIMER:** The information shown on this map was compiled from official GIS sources. The land users and facility information on this map is for display purposes only and should not be relied upon without independent verification as to its accuracy. Washington County, Utah will not be held responsible for any claims, losses, or damages resulting from the use of this map.

94.04 150.1 Feet

WAS 1984.Was\_Markling\_Audiliary\_Spaces



# Merking Vicinity Map



**Legend**

Parcel	Ownership
[White Box]	U.S. Forest Service
[Light Gray Box]	U.S. Forest Service Wilderness
[Medium Gray Box]	Bureau of Land Management
[Dark Gray Box]	Bureau of Land Management Wildlife
[Lightest Gray Box]	National Park Service
[Light Gray Box]	Wildlife Reserves
[Medium Gray Box]	Wild Division of Wildlife Resources
[Dark Gray Box]	Wild Division of Transportation
[Lightest Gray Box]	State Park
[Light Gray Box]	State of Utah
[Medium Gray Box]	Washington County
[Dark Gray Box]	Municipally Owned
[Lightest Gray Box]	School District
[Medium Gray Box]	Privately Owned
[Lightest Gray Box]	Water
[Dark Gray Box]	Water Conservancy District
[Lightest Gray Box]	State Assessed C/L and Gas
[Dark Gray Box]	Mining Claim

Notes

**DISCLAIMER:** The information shown on this map was compiled from different data sources. The land base and facility information on this map is for display purposes only and should not be relied upon without independent verification as to its accuracy. Washington County, Utah will not be held responsible for any claims, losses or damages resulting from the use of this map.





# Merkling Plot Plan



**Legend**

Parcels	Ownership
[Symbol]	U.S. Forest Service
[Symbol]	U.S. Forest Service Wildlands
[Symbol]	Bureau of Land Management
[Symbol]	Bureau of Land Management Wild
[Symbol]	National Park Service
[Symbol]	Shivwits Reservation
[Symbol]	Utah Division of Wildlife Resources
[Symbol]	Utah Division of Transportation
[Symbol]	State Park
[Symbol]	State of Utah
[Symbol]	Washington County
[Symbol]	Municipally Owned
[Symbol]	School District
[Symbol]	Privately Owned
[Symbol]	Water
[Symbol]	Water Conservancy District
[Symbol]	State Assessed Oil and Gas
[Symbol]	Mining Claim

**Disclaimer:** The information shown on this map was compiled from different GIS data sources. While every effort was made to ensure the accuracy of the information, Washington County, Utah, will not be held responsible for any claims, losses or damages resulting from the use of this map.



WDS\_1384\_AWD\_Meratur\_Aquility\_Escape

LOT SIZE 56' x 156'  
156' x 156'

MERKLING  
NIGHTLY RENTAL  
(PARKING)

142 N Toquer Blvd Plot Plan  
(T-68-A-3) 0.2 Acres (56'x156')

