



Merkling Vicinity Map



Legend

Parcels	
	Ownership
	U.S. Forest Service
	U.S. Forest Service Wilderness
	Bureau of Land Management
	Bureau of Land Management Wildlife
	National Park Service
	Shivwits Reservation
	Utah Division of Wildlife Resources
	Utah Division of Transportation
	State Park
	State of Utah
	Washington County
	Municipally Owned
	School District
	Privately Owned
	Water
	Water Conservancy District
	State Assessed Oil and Gas
	Mining Claim

Notes

DISCLAIMER: The information shown on this map was compiled from different GIS sources. The land base and facility information on this map is for display purposes only and should not be relied upon without independent verification as to its accuracy. Washington County, Utah will not be held responsible for any omissions, losses or damages resulting from the use of this map.



WGS_1984_Web_Mercator_Auxiliary_Sphere

Merkling Plot Plan

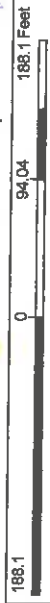


Legend

Parcels	Ownership
U.S. Forest Service	U.S. Forest Service Wilderness
Bureau of Land Management	Bureau of Land Management Wild
National Park Service	Shiwiwi Reservation
Utah Division of Wildlife Resources	Utah Division of Transportation
State Park	State of Utah
Washington County	Municipally Owned
School District	Privately Owned
Water	Water Conservancy District
State Assessed Oil and Gas	Mining Claim

Notes

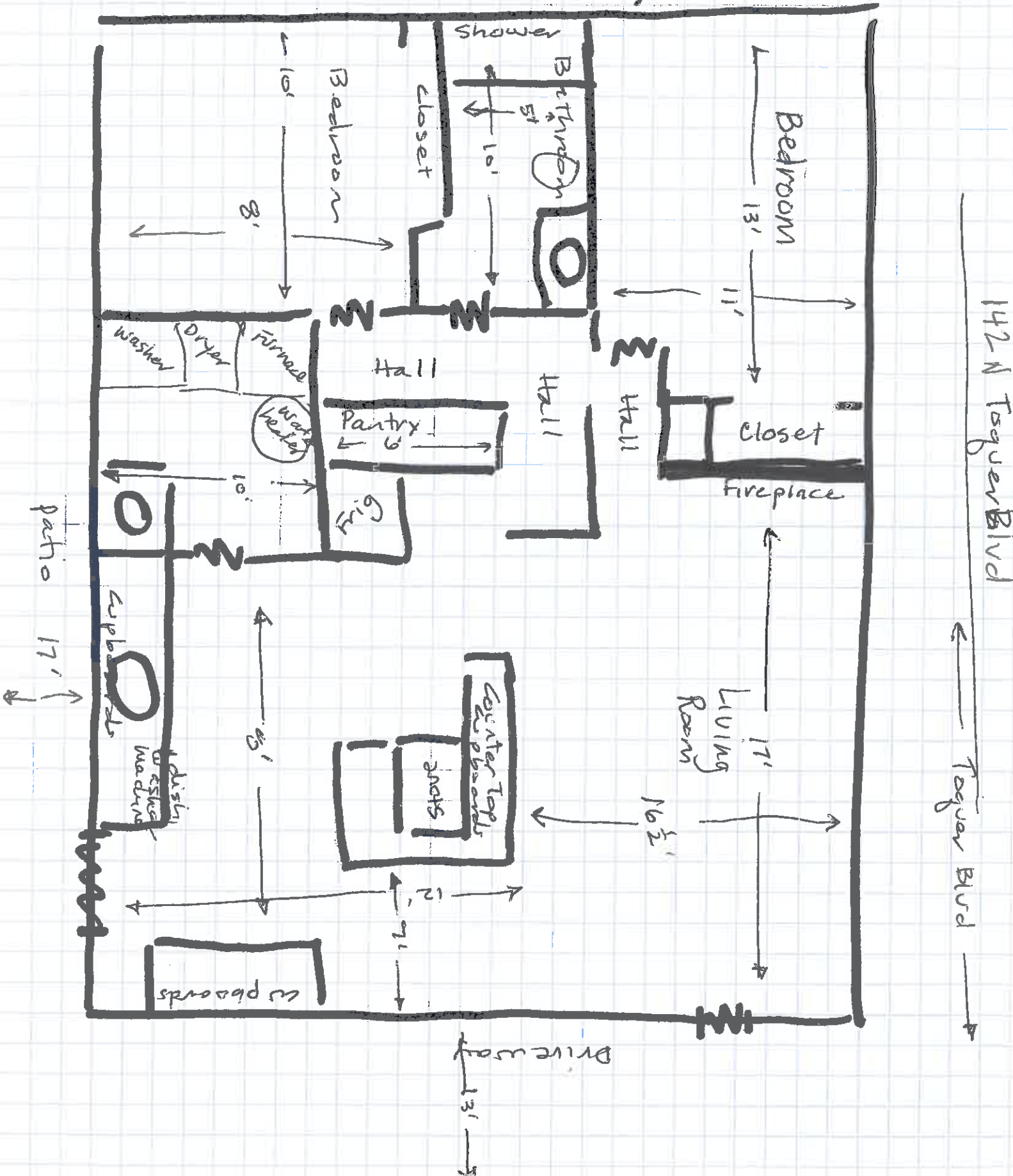
DISCLAIMER: The information shown on this map was compiled from different GIS sources. The lead base and boundary information is for planning purposes only and should not be relied upon without independent verification as to the accuracy of the information shown. Washington County, Utah will not be held responsible for any claims, losses or damages resulting from the use of this map.



WGS_1984_Web_Mercator_Auxiliary_Sphere

LOT SIZE 56' x 156'
HOUSE

Floor Plan of Dwelling





Merkling 142N Parking



Legend	
	Address Points
	Parcels
	Streets
	Interstate
	Other Freeways and Expressways
	Major Collector
	Minor Collector
	Principal Arterial
	Minor Arterial
	Local
	Unimproved
	Ownership
	U.S. Forest Service
	U.S. Forest Service Wilderness
	Bureau of Land Management
	Bureau of Land Management Wildlife
	National Park Service
	Shivelys Reservation
	Utah Division of Wildlife Resources
	Utah Division of Transportation
	State Park
	State of Utah
	Washington County
	Municipally Owned
	School District
	Privately Owned

Notes

DISCLAIMER: The information shown on this map was compiled from different GIS sources. The land base and facility information on this map is for display purposes only and should not be relied upon without independent verification as to its accuracy. Washington County, Utah, will not be held responsible for any claims, losses or damages resulting from the use of this map.

