



Title



Legend

Parcels

Ownership

- U.S. Forest Service
- U.S. Forest Service Wilderness
- Bureau of Land Management
- Bureau of Land Management Wildc
- National Park Service
- Shivwits Reservation
- Utah Division of Wildlife Resources
- Utah Division of Transportation
- State Park
- State of Utah
- Washington County
- Municipally Owned
- School District
- Privately Owned
- Water
- Water Conservancy District
- State Assessed Oil and Gas
- Mining Claim

Notes

DISCLAIMER: The information shown on this map was compiled from different GIS sources. The land base and facility information on this map is for display purposes only and should not be relied upon without independent verification as to its accuracy. Washington County, Utah will not be held responsible for any claims, losses or damages resulting from the use of this map.

752.3

0 376.17 752.3 Feet

WGS_1984_Web_Mercator_Auxiliary_Sphere

Casita

SHARED
CLOZET

SHARED
CLOZET



HALL
12'8" x 6'4"

BEDROOM
14'8" x 9'2"

BATH
8'9" x 8'8"

MASTER BEDROOM
21'8" x 11'1"

KITCHEN
12'10" x 11'0"

LAUNDRY
9'0" x 9'5"

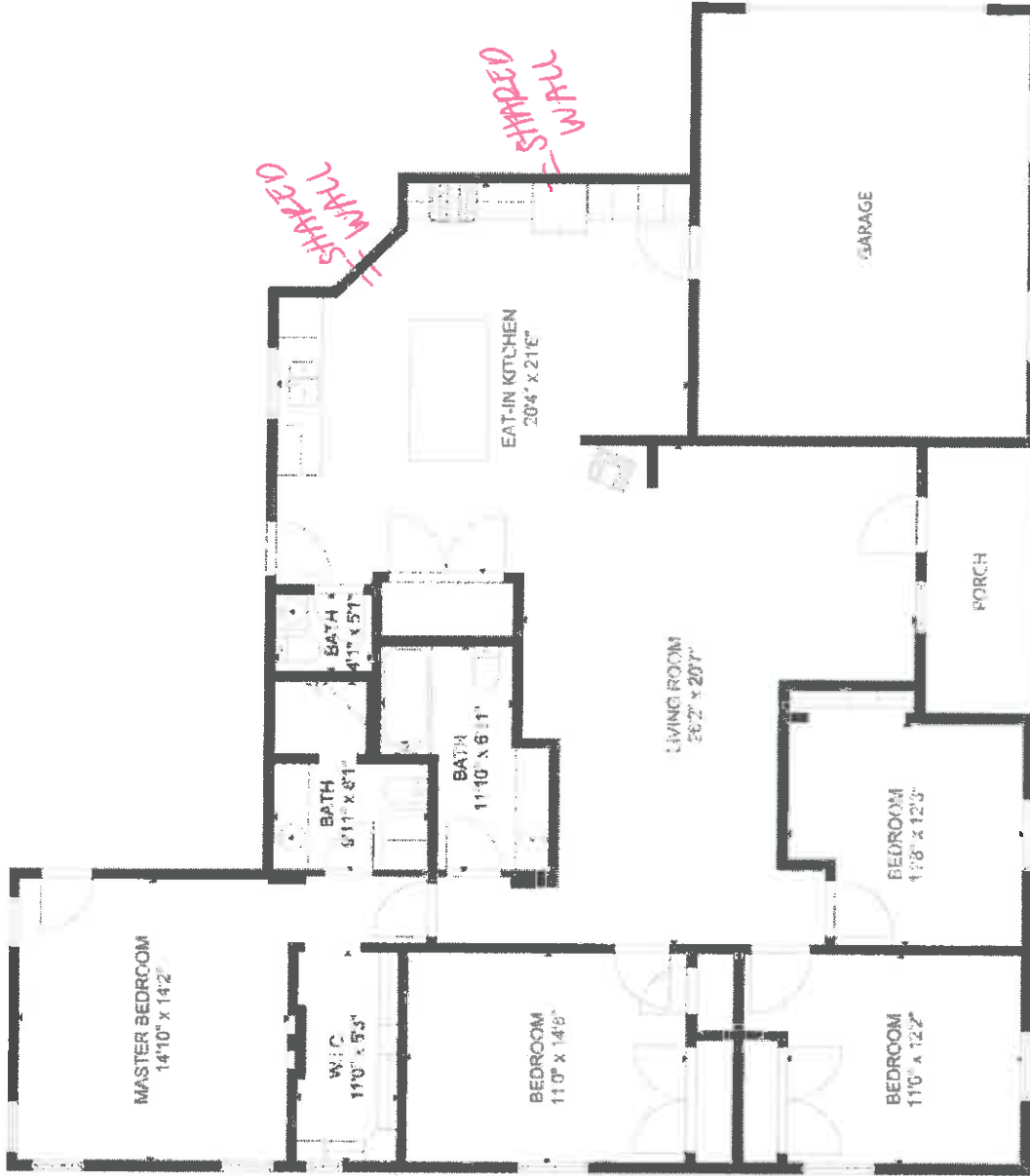
HALL
5'2" x 13'8"

LIVING ROOM
17'11" x 19'0"

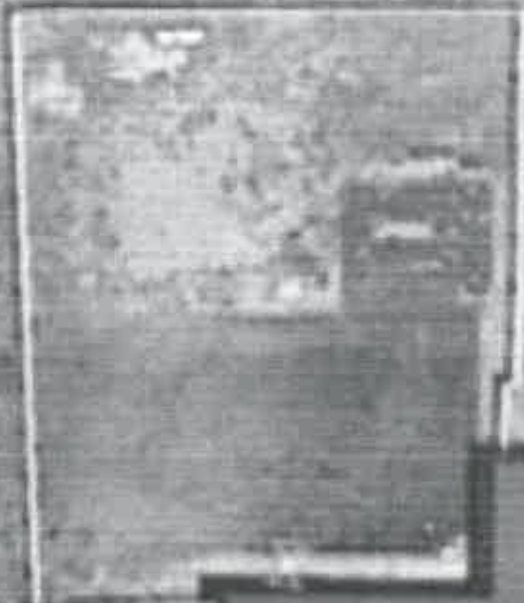
OFFICE
15'6" x 7'0"

UNLESS INDICATED OTHERWISE
ALL DIMENSIONS ARE APPROXIMATE

Main house



© 2000 PERINEL BROS.
TOTAL 455 sq. ft.
PROJECT 1307 (4.0)



200

188



Sunset Ave

Sunset Ave