

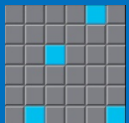
# 2022 Stewardship Funding Request On Trust Lands



# 2022 Stewardship Funding Request

- Needs Board Approval
- Vetted by the Surface Committee
- Schools (90%) Reservoirs (1.5%) School of Mines (1%)  
University of Utah (6.5%) and Utah State University (1%)

Fire	SITLA Acres	SITLA Costs	WRI Cost
Flatt Fire	886	\$125,000	\$70,000
Sage grouse/Habitat Projects			
Hamblin Valley Habitat Project	1,104	\$50,000	\$502,389
East Bear Lake Habitat Project	1,400	\$50,000	\$142,100
Total	3,390	\$225,000	\$714,489



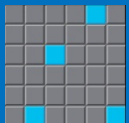
# 2021 Wildfire Season – How Bad Was it?

## Total Number of Fires – 1,136

- 575 human caused
- 13 Fires on Trust Lands
- 2,547.20 Acres – Trust Lands

## Total Acres Burned

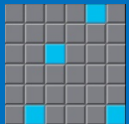
- Statewide – 63,795 Acres
- Utah Fire Costs - \$16 M
- US Fire Cost - \$4.4 B





# Purpose of Projects

- Stabilize watershed following wildfire
- Soil erosion from wind and water, debris flows
- Increase water quantity and quality
- Increase forage for grazing permits
- Improve wildlife (sage grouse) habitat
- Prevent listing of sage grouse (increase populations)
- Reduce wildfire threats in the future
- Cost of land ownership/stewardship



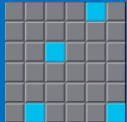
STATE OF UTAH  
SCHOOL AND INSTITUTIONAL  
TRUST LANDS ADMINISTRATION



UTAH'S  
WATERSHED  
RESTORATION  
INITIATIVE



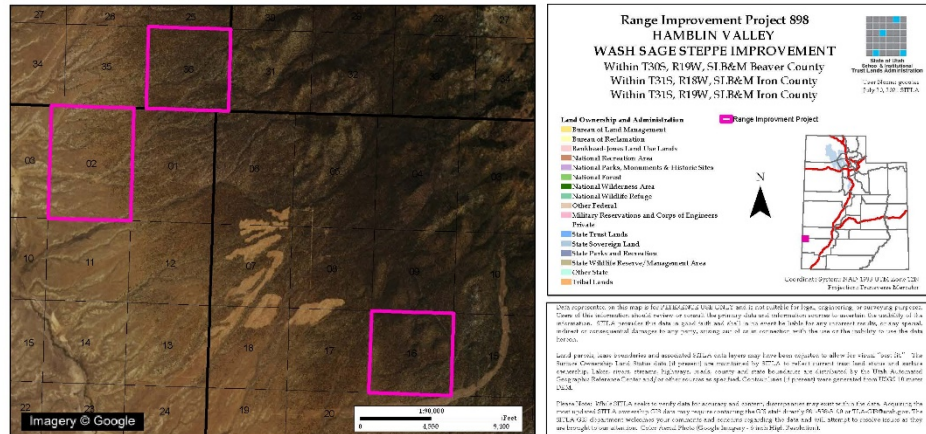
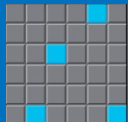
## A yellow biplane with the registration 'N-3857' is shown from a rear-quarter perspective, flying over a vast, hilly landscape. The aircraft is spraying a fine mist or smoke from its wings, creating a wide, horizontal cloud behind it. The background consists of rolling hills and mountains under a clear sky.



STATE OF UTAH  
SCHOOL AND INSTITUTIONAL  
TRUST LANDS ADMINISTRATION

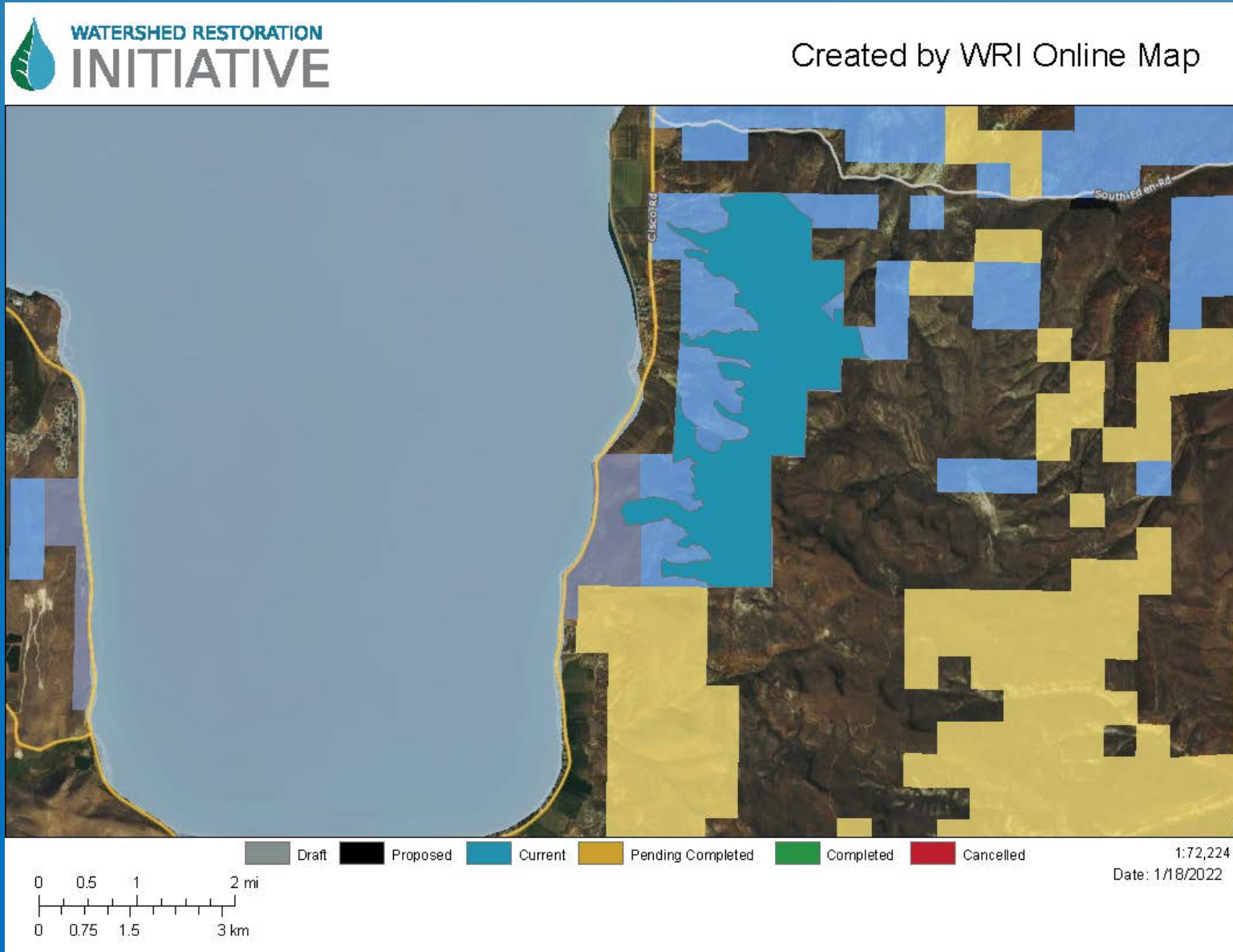


## A photograph of a dry, arid landscape. In the foreground, a line of dead, blackened shrubs stands in a sandy, barren area. Behind them, a body of water is visible, reflecting the sky. The background shows a hilly, rocky terrain under a clear sky. The overall scene suggests a harsh, possibly drought-stricken environment.





# East Bear Lake Range and Habitat Improvement Project 1,400 Acres





## Rehabilitated Areas Are More Resilient

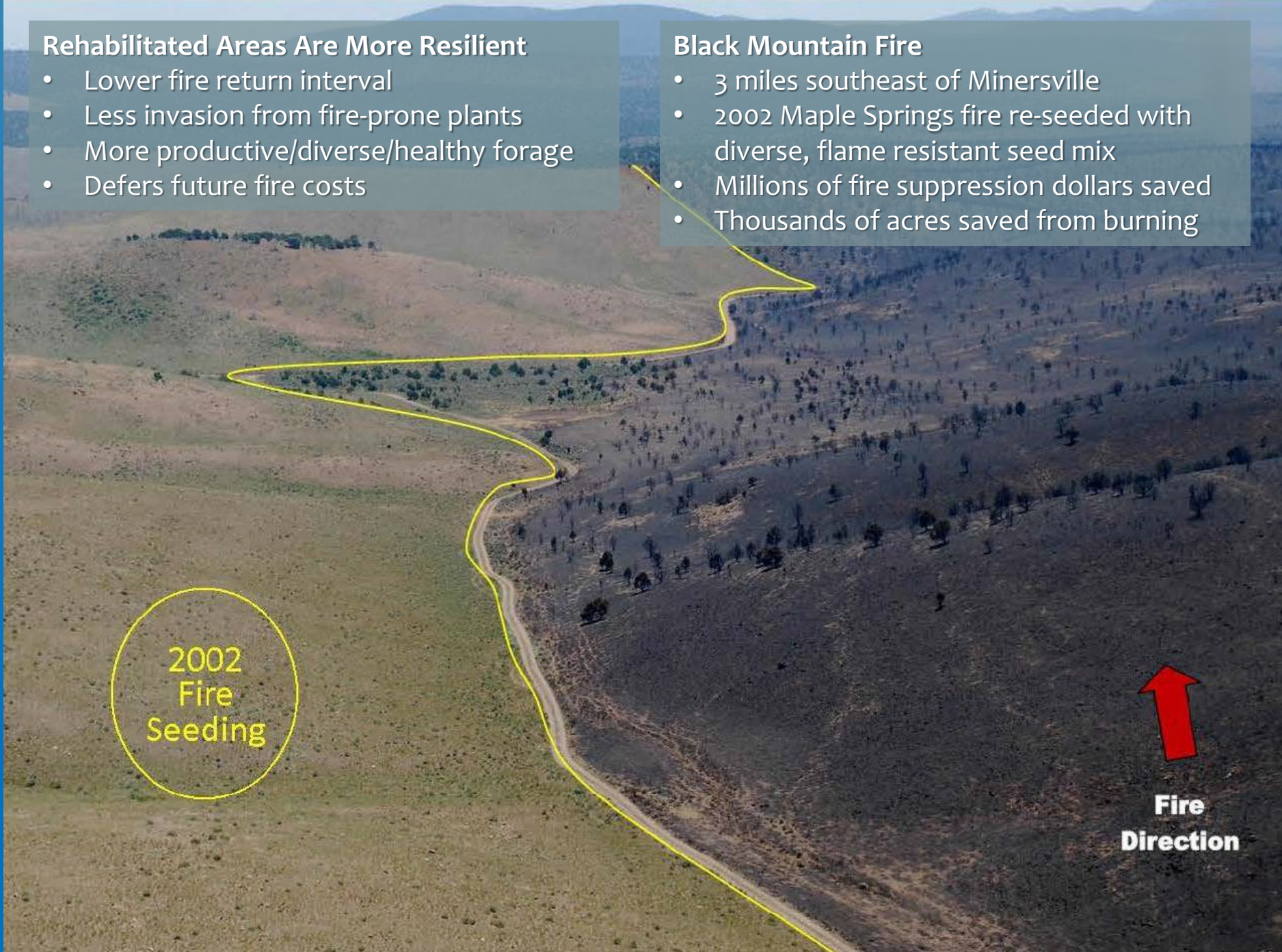
- Lower fire return interval
- Less invasion from fire-prone plants
- More productive/diverse/healthy forage
- Defers future fire costs

## Black Mountain Fire

- 3 miles southeast of Minersville
- 2002 Maple Springs fire re-seeded with diverse, flame resistant seed mix
- Millions of fire suppression dollars saved
- Thousands of acres saved from burning

2002  
Fire  
Seeding

  
**Fire  
Direction**





# BEFORE AND AFTER







2002 B00k Cliffs Fire

Year 2004

Year 2002

Year 2011





2002 B00k Cliffs Fire

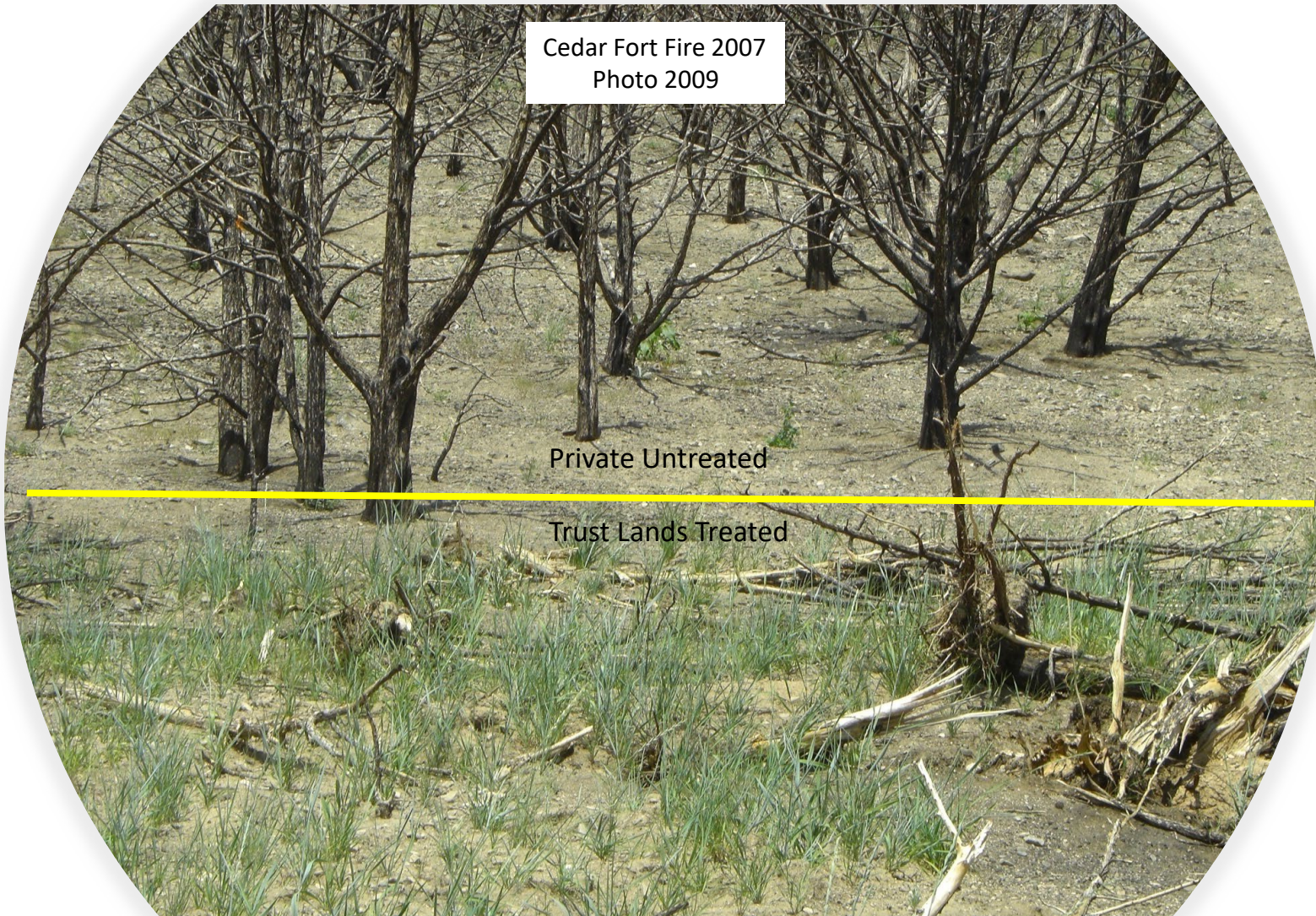




Cedar Fort Fire 2007  
Photo 2009

Private Untreated

Trust Lands Treated







Cedar Fort Fire 2007



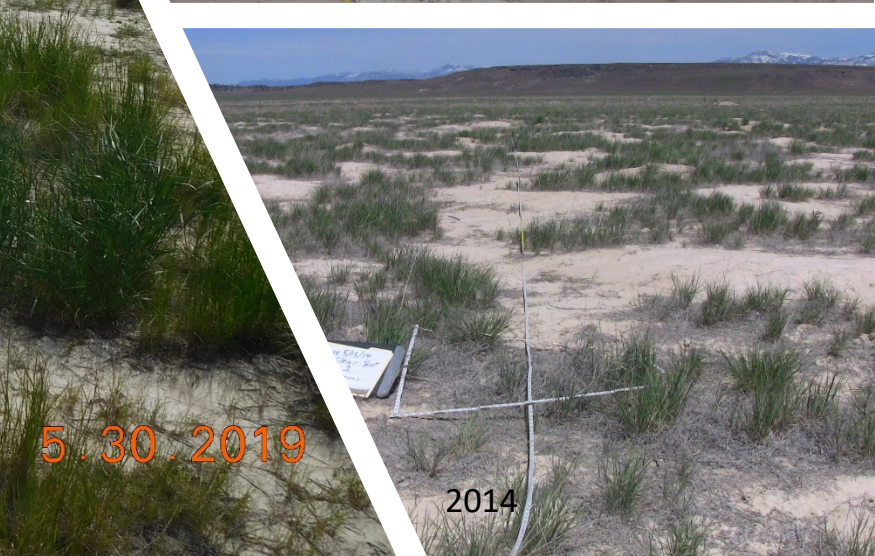
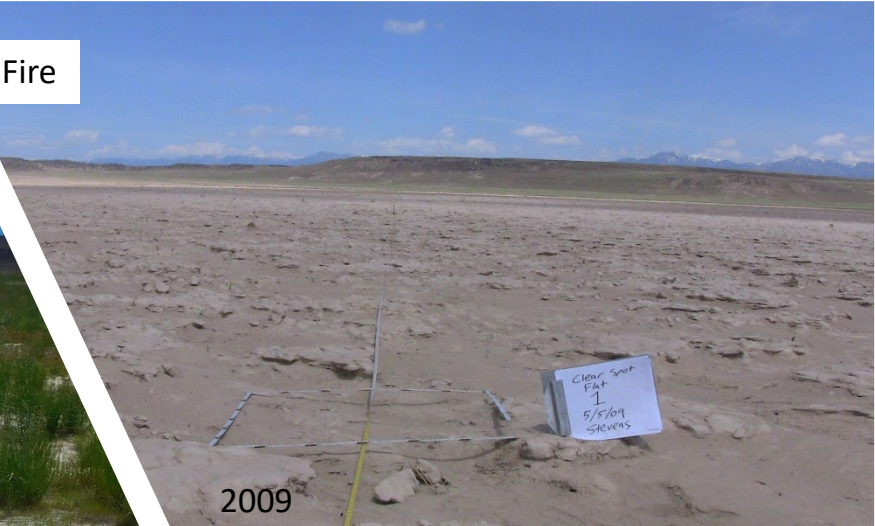
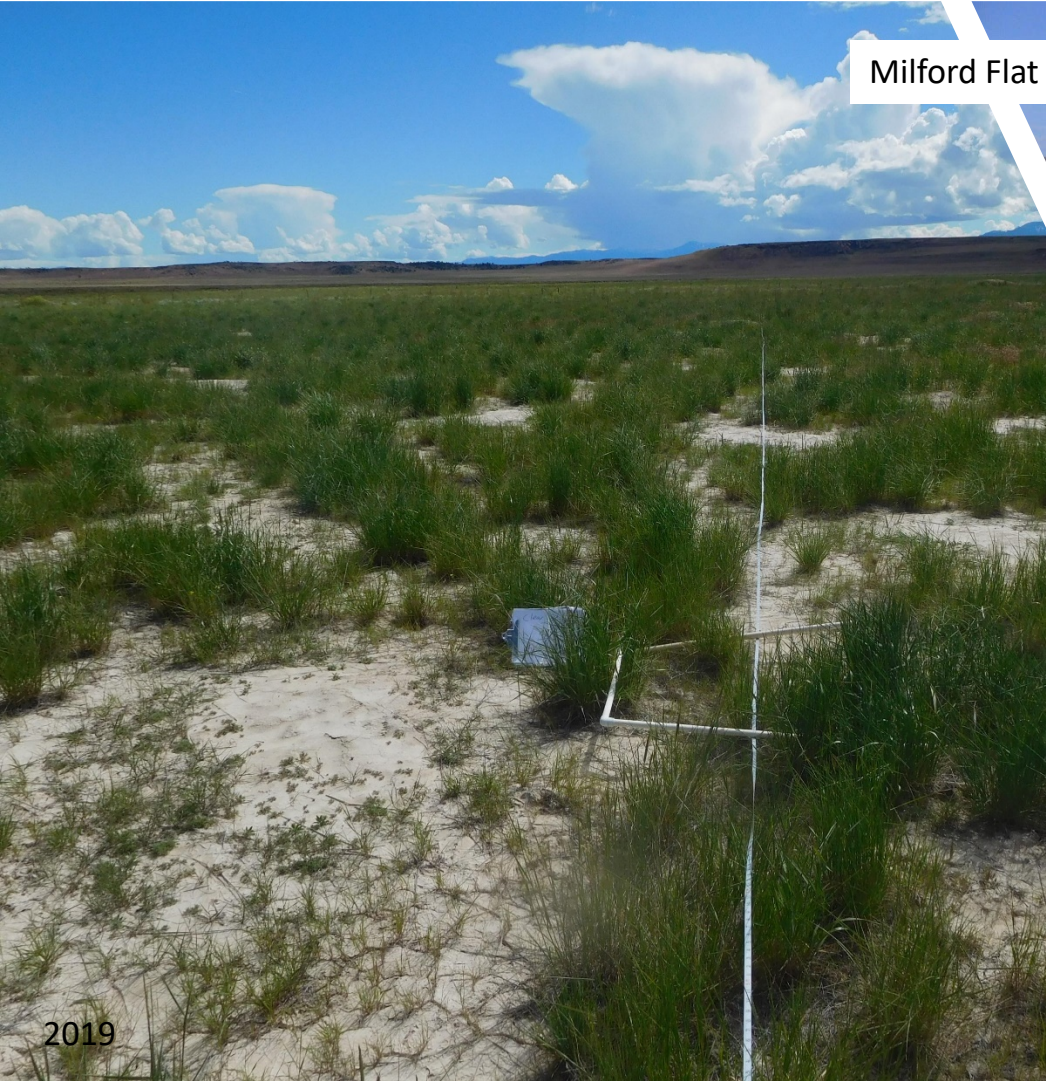


Milford Flat Fire





# Milford Flat Fire



5.30.2019

2019

2014