



EAGLE MOUNTAIN
CITY COUNCIL MEETING

August 24, 2021, 5:00 PM

Eagle Mountain City Council Chambers

1650 East Stagecoach Run, Eagle Mountain, Utah 84005

5:00 P.M. POLICY SESSION - CITY COUNCIL CHAMBERS

1. CALL TO ORDER

CONSENT AGENDA

2. BID AWARDS

- 2.A 2021 White Hills Well Upgrade Design Services - Bowen Collins and Associates
- 2.B Bobby Wren Traffic Signal Installation - B Jackson Engineering
- 2.C Three 2022 Freightliner Cab and Chassis - Premier Truck Group (State Contract)
Quote - Replacement for Truck 56
Quote - Sewer and Water Department Vehicles
- 2.D Two 2022 Ford F-350 Trucks - Ken Garff Ford (State Contract)
Quote - Ken Garff Ford

3. BOND RELEASES

- 3.A Arrival Phase B, Plat 4 - Out of Warranty
Bond Release Letter
Recorded Plat
- 3.B Sunset Flats Phase A, Plat 2 - Into Warranty
Bond Release Letter
Recorded Plat

4. RESOLUTIONS

- 4.A Declaring Surplus Property - Fleet Vehicles
RES--Surplus Property - Vehicles
Exhibit A - Fleet Surplus Vehicles

5. ADJOURNMENT

BOARD OF CANVASSERS - CITY COUNCIL CHAMBERS

6. CALL TO ORDER

The City Council will convene as the Board of Canvassers to canvas the results of the 2021 Eagle Mountain Primary Election.

7. MOTION

7.A MOTION - Approve the Results of the 2021 Primary Election.

BACKGROUND: (Presented by Director of Administrative Services/City Recorder Fionnuala Kofoed) The Board of Canvassers will review the report of the Eagle Mountain City Primary Election of August 10, 2021, verifying the results of the election by ratifying the results of the canvass; accepting the report of the Election Official and certifying the election results; and declaring the persons reported by the Election Official as receiving the highest number of votes to be on the ballot and nominated for the General Election on November 2, 2021.

8. ADJOURNMENT

THE PUBLIC IS INVITED TO PARTICIPATE IN PUBLIC MEETINGS FOR ALL AGENDAS. In accordance with the Americans with Disabilities Act, Eagle Mountain City will make reasonable accommodation for participation in all Public Meetings and Work Sessions. Please call the City Recorder's Office at least 3 working days prior to the meeting at 801-789-6610. This meeting may be held telephonically to allow a member of the public body to participate. This agenda is subject to change with a minimum 24-hour notice.

CERTIFICATE OF POSTING

The undersigned, duly appointed City Recorder, does hereby certify that the above agenda notice was posted on this this 19th day of August, 2021, on the Eagle Mountain City bulletin boards, the Eagle Mountain City website www.emcity.org, posted to the Utah State public notice website <http://www.utah.gov/pmn/index.html>, and was emailed to at least one newspaper of general circulation within the jurisdiction of the public body.

Fionnuala B. Kofoed, MMC, City Recorder



**EAGLE MOUNTAIN CITY
CITY COUNCIL MEETING
AUGUST 24, 2021**

TITLE:	2021 White Hills Well Upgrade Design Services - Bowen Collins and Associates		
ITEM TYPE:	Bid Award		
FISCAL IMPACT:	\$119,126		
APPLICANT:			
GENERAL PLAN DESIGNATION	CURRENT ZONE	ACREAGE	COMMUNITY

PUBLIC HEARING:

No

PREPARED BY:

Chris Trusty, Public Works

PRESENTED BY:

Chris Trusty

RECOMMENDATION:

Staff recommends the City Council approve a bid award in the amount of \$119,126 to Bowen Collins and Associates for the White Hills Well upgrade design services project.

BACKGROUND:

Currently there are two wells that had been installed as part of the White Hills Water District that sit just west of SR-73. These wells were constructed with power constraints which have been resolved with additional Rocky Mountain Power lines extended to the area. With the addition of the power lines, the wells are capable of producing more water than they have in the past once upgraded with larger pumps and motors.

Eagle Mountain City staff has solicited design proposals from qualified engineering firms to provide bids for the upgrade of the wells. The design engineer will perform a hydrologic evaluation of the wells; will provide the design and specifications of electric, SCADA, pumps and motor; and will assist the City in soliciting construction bids as well as inspection and commissioning of the upgraded wells. The design consultant will also submit drawings and applications to the State for construction and operating permits.

Proposals were received from the following firms:

Barr Engineering: Design Costs: \$114,589; Total Cost: \$188,435

Bowen Collins: Design Costs: \$66,319; Total Cost: \$119,126
Epic Engineering: Design Cost: \$43,700; Total Cost: \$113,400
Jones and DeMille: Design Cost: \$49,980; Total Cost: \$84,670
Steve Jackson Engineering: Design Cost: \$32,320; Total Cost:
\$55,250

Based on the criteria included in the RFP and after rankings by City staff based on the engineering firms ability to complete the tasks as outlined in the RFP, Barr Engineering and Bowen Collins ranked the highest. Because the fee proposal included from Bowen Collins was significantly less, City staff recommends awarding the bid to that firm.

ITEMS FOR CONSIDERATION:

REQUIRED FINDINGS:

PLANNING COMMISSION ACTION/RECOMMENDATION:

ATTACHMENTS:



**EAGLE MOUNTAIN CITY
CITY COUNCIL MEETING
AUGUST 24, 2021**

TITLE:	Bobby Wren Traffic Signal Installation - B Jackson Engineering		
ITEM TYPE:	Bid Award		
FISCAL IMPACT:	\$99,999		
APPLICANT:			
GENERAL PLAN DESIGNATION	CURRENT ZONE	ACREAGE	COMMUNITY

PUBLIC HEARING:

No

PREPARED BY:

Chris Trusty, Public Works

PRESENTED BY:

Chris Trusty

RECOMMENDATION:

Staff recommends that the City Council award a bid to B Jackson Engineering in the amount of \$99,999 for the Bobby Wren Traffic Signal installation project.

BACKGROUND:

Eagle Mountain City has solicited bids for the installation of a traffic signal on Pony Express Parkway at Bobby Wren Boulevard. This signal light will be financed as part of the funding for the Pony Express Parkway widening project. It is anticipated that this signal will be installed this fall and will be operational by the beginning of 2022.

The City received the following bids for this project:

- B Jackson - \$99,999
- Skyline Electric - \$106,500
- Cache Valley - \$127,128.50
- Hidden Peak - \$140,050

B Jackson has installed the last two lights with the City and staff recommends that the bid be awarded to B Jackson in the amount of \$99,999.

ITEMS FOR CONSIDERATION:

REQUIRED FINDINGS:

PLANNING COMMISSION ACTION/RECOMMENDATION:

ATTACHMENTS:



**EAGLE MOUNTAIN CITY
CITY COUNCIL MEETING
AUGUST 24, 2021**

TITLE:	Three 2022 Freightliner Cab and Chassis - Premier Truck Group (State Contract)		
ITEM TYPE:	Bid Award		
FISCAL IMPACT:	\$220,278 from the Fleet Fund, GL 54-45-54000-7421		
APPLICANT:			
GENERAL PLAN DESIGNATION	CURRENT ZONE	ACREAGE	COMMUNITY

PUBLIC HEARING:

No

PREPARED BY:

Jeff Weber, Admin

PRESENTED BY:

Jeff Weber,
Facilities/Operations Director

RECOMMENDATION:

Staff recommends the City Council approve the purchase of three 2022 Freightliner cab and chassis from Premier Truck Group in the amount of \$220,278.

BACKGROUND:

The purchase includes the cab and chassis for three dump trucks: one for the Sewer Department, one for the Water Department, and one to replace Truck 56 in the Streets Department. Once the cab and chassis arrive, staff will purchase the appropriate truck beds. These items are being purchased on a State contract and the purchase is included in the FY 2022 budget.

ITEMS FOR CONSIDERATION:

REQUIRED FINDINGS:

PLANNING COMMISSION ACTION/RECOMMENDATION:

ATTACHMENTS:

[Quote - Replacement for Truck 56](#)

[Quote - Sewer and Water Department Vehicles](#)

Prepared for:
Jeff Weber
EAGLE MOUNTAIN CITY
2565 N Pony Express Pkwy
Eagle Mountain, UT 84005
Phone: 801-789-6679

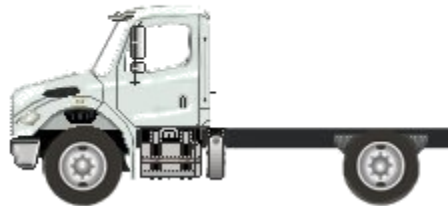
Prepared by:
Skylar Dyreng
PREMIER TRUCK GROUP
2240 SOUTH 5370 WEST
SALT LAKE CITY, UT 84120
Phone:

A proposal for
EAGLE MOUNTAIN CITY

Prepared by
PREMIER TRUCK GROUP
Skylar Dyreng

Aug 17, 2021

Freightliner M2 106



Components shown may not reflect all spec'd options and are not to scale



Prepared for:
 Jeff Weber
 EAGLE MOUNTAIN CITY
 2565 N Pony Express Pkwy
 Eagle Mountain, UT 84005
 Phone: 801-789-6679

Prepared by:
 Skylar Dyreng
 PREMIER TRUCK GROUP
 2240 SOUTH 5370 WEST
 SALT LAKE CITY, UT 84120
 Phone:

S P E C I F I C A T I O N P R O P O S A L

Data Code	Description
Price Level	
PRL-23M	M2 PRL-23M (EFF:01/21/20)
Data Version	
DRL-011	SPECPRO21 DATA RELEASE VER 011
Interior Convenience/Driver Retention Package	
055-002	INTERIOR CONVENIENCE PACKAGE
Vehicle Configuration	
001-172	M2 106 CONVENTIONAL CHASSIS
004-222	2022 MODEL YEAR SPECIFIED
002-004	SET BACK AXLE - TRUCK
019-002	STRAIGHT TRUCK PROVISION
003-001	LH PRIMARY STEERING LOCATION
General Service	
AA1-002	TRUCK CONFIGURATION
AA6-001	DOMICILED, USA 50 STATES (INCLUDING CALIFORNIA AND CARB OPT-IN STATES)
A85-010	UTILITY/REPAIR/MAINTENANCE SERVICE
A84-1GM	GOVERNMENT BUSINESS SEGMENT
AA4-010	DIRT/SAND/ROCK COMMODITY
AA5-006	TERRAIN/DUTY: 10% (SOME) OF THE TIME, IN TRANSIT, IS SPENT ON NON-PAVED ROADS
AB1-008	MAXIMUM 8% EXPECTED GRADE
AB5-003	MAINTAINED GRAVEL OR CRUSHED ROCK - MOST SEVERE IN-TRANSIT (BETWEEN SITES) ROAD SURFACE
995-091	MEDIUM TRUCK WARRANTY
A66-99D	EXPECTED FRONT AXLE(S) LOAD : 8000.0 lbs
A68-99D	EXPECTED REAR DRIVE AXLE(S) LOAD : 18000.0 lbs
A63-99D	EXPECTED GROSS VEHICLE WEIGHT CAPACITY : 26000.0 lbs



Prepared for:
 Jeff Weber
 EAGLE MOUNTAIN CITY
 2565 N Pony Express Pkwy
 Eagle Mountain, UT 84005
 Phone: 801-789-6679

Prepared by:
 Skylar Dyreng
 PREMIER TRUCK GROUP
 2240 SOUTH 5370 WEST
 SALT LAKE CITY, UT 84120
 Phone:

Data Code	Description
Truck Service	
AA3-018	FRONT PLOW/END DUMP BODY
AF3-1W0	HENDERSON
AF7-99D	EXPECTED BODY/PAYLOAD CG HEIGHT ABOVE FRAME "XX" INCHES : 32.0 in
Engine	
101-21Y	CUM B6.7 325 HP @ 2400 RPM, 2600 GOV, 750 LB-FT @ 1800 RPM
Electronic Parameters	
79A-070	70 MPH ROAD SPEED LIMIT
79B-000	CRUISE CONTROL SPEED LIMIT SAME AS ROAD SPEED LIMIT
79M-001	PTO MODE BRAKE OVERRIDE - SERVICE BRAKE APPLIED
79P-002	PTO RPM WITH CRUISE SET SWITCH - 700 RPM
79Q-002	PTO RPM WITH CRUISE RESUME SWITCH - 700 RPM
79S-001	PTO MODE CANCEL VEHICLE SPEED - 5 MPH
79U-007	PTO GOVERNOR RAMP RATE - 250 RPM PER SECOND
80G-002	PTO MINIMUM RPM - 700
80J-002	REGEN INHIBIT SPEED THRESHOLD - 5 MPH
Engine Equipment	
99C-021	2016 ONBOARD DIAGNOSTICS/2010 EPA/CARB/GHG21 CONFIGURATION
99D-011	2008 CARB EMISSION CERTIFICATION - CLEAN IDLE (INCLUDES 6X4 INCH LABEL ON LOWER FORWARD CORNER OF DRIVER DOOR)
13E-001	STANDARD OIL PAN
105-001	ENGINE MOUNTED OIL CHECK AND FILL
014-099	SIDE OF HOOD AIR INTAKE WITH FIREWALL MOUNTED DONALDSON AIR CLEANER
124-1D7	DR 12V 160 AMP 28-SI QUADRAMOUNT PAD ALTERNATOR WITH REMOTE BATTERY VOLT SENSE
292-205	(2) DTNA GENUINE, FLOODED STARTING, MIN 1900CCA, 350RC, THREADED STUD BATTERIES
290-017	BATTERY BOX FRAME MOUNTED
281-001	STANDARD BATTERY JUMPERS
282-001	SINGLE BATTERY BOX FRAME MOUNTED LH SIDE UNDER CAB



Prepared for:
 Jeff Weber
 EAGLE MOUNTAIN CITY
 2565 N Pony Express Pkwy
 Eagle Mountain, UT 84005
 Phone: 801-789-6679

Prepared by:
 Skylar Dyreng
 PREMIER TRUCK GROUP
 2240 SOUTH 5370 WEST
 SALT LAKE CITY, UT 84120
 Phone:

Data Code	Description
291-017	WIRE GROUND RETURN FOR BATTERY CABLES WITH ADDITIONAL FRAME GROUND RETURN
289-001	NON-POLISHED BATTERY BOX COVER
87P-001	CAB AUXILIARY POWER CABLE
293-058	POSITIVE LOAD DISCONNECT WITH CAB MOUNTED CONTROL SWITCH MOUNTED OUTBOARD DRIVER SEAT
295-029	POSITIVE AND NEGATIVE POSTS FOR JUMPSTART LOCATED ON FRAME NEXT TO STARTER
107-032	CUMMINS TURBOCHARGED 18.7 CFM AIR COMPRESSOR WITH INTERNAL SAFETY VALVE
108-002	STANDARD MECHANICAL AIR COMPRESSOR GOVERNOR
131-013	AIR COMPRESSOR DISCHARGE LINE
152-041	ELECTRONIC ENGINE INTEGRAL SHUTDOWN PROTECTION SYSTEM
128-076	CUMMINS ENGINE INTEGRAL BRAKE WITH VARIABLE GEOMETRY TURBO ON/OFF
016-1C3	RH OUTBOARD UNDER STEP MOUNTED HORIZONTAL AFTERTREATMENT SYSTEM ASSEMBLY WITH RH HORIZONTAL TAILPIPE
28F-002	ENGINE AFTERTREATMENT DEVICE, AUTOMATIC OVER THE ROAD REGENERATION AND DASH MOUNTED REGENERATION REQUEST SWITCH
239-001	STANDARD EXHAUST SYSTEM LENGTH
237-052	RH STANDARD HORIZONTAL TAILPIPE
23U-001	6 GALLON DIESEL EXHAUST FLUID TANK
30N-003	100 PERCENT DIESEL EXHAUST FLUID FILL
43X-002	LH MEDIUM DUTY STANDARD DIESEL EXHAUST FLUID TANK LOCATION
23Y-001	STANDARD DIESEL EXHAUST FLUID PUMP MOUNTING
43Y-001	STANDARD DIESEL EXHAUST FLUID TANK CAP
273-058	AIR POWERED ON/OFF ENGINE FAN CLUTCH
276-001	AUTOMATIC FAN CONTROL WITHOUT DASH SWITCH, NON ENGINE MOUNTED
110-003	CUMMINS SPIN ON FUEL FILTER
118-001	FULL FLOW OIL FILTER
266-100	700 SQUARE INCH ALUMINUM RADIATOR
103-039	ANTIFREEZE TO -34F, OAT (NITRITE AND SILICATE FREE) EXTENDED LIFE COOLANT



Prepared for:
 Jeff Weber
 EAGLE MOUNTAIN CITY
 2565 N Pony Express Pkwy
 Eagle Mountain, UT 84005
 Phone: 801-789-6679

Prepared by:
 Skylar Dyreng
 PREMIER TRUCK GROUP
 2240 SOUTH 5370 WEST
 SALT LAKE CITY, UT 84120
 Phone:

Data Code	Description
171-007	GATES BLUE STRIPE COOLANT HOSES OR EQUIVALENT
172-001	CONSTANT TENSION HOSE CLAMPS FOR COOLANT HOSES
270-016	RADIATOR DRAIN VALVE
168-998	NO RADIATOR/OIL PAN GUARD
138-010	PHILLIPS-TEMRO 750 WATT/115 VOLT BLOCK HEATER
140-053	BLACK PLASTIC ENGINE HEATER RECEPTACLE MOUNTED UNDER LH DOOR
134-001	ALUMINUM FLYWHEEL HOUSING
132-004	ELECTRIC GRID AIR INTAKE WARMER
155-057	DELCO 12V 29MT STARTER WITH INTEGRATED MAGNETIC SWITCH

Transmission

342-584	ALLISON 3500 RDS AUTOMATIC TRANSMISSION WITH PTO PROVISION
---------	--

Transmission Equipment

343-339	ALLISON VOCATIONAL PACKAGE 223 - AVAILABLE ON 3000/4000 PRODUCT FAMILIES WITH VOCATIONAL MODELS RDS, HS, MH AND TRV
84B-012	ALLISON VOCATIONAL RATING FOR ON/OFF HIGHWAY APPLICATIONS AVAILABLE WITH ALL PRODUCT FAMILIES
84C-023	PRIMARY MODE GEARS, LOWEST GEAR 1, START GEAR 1, HIGHEST GEAR 6, AVAILABLE FOR 3000/4000 PRODUCT FAMILIES ONLY
84D-023	SECONDARY MODE GEARS, LOWEST GEAR 1, START GEAR 1, HIGHEST GEAR 6, AVAILABLE FOR 3000/4000 PRODUCT FAMILIES ONLY
84E-017	S5 PERFORMANCE LIMITING PRIMARY SHIFT SCHEDULE, AVAILABLE FOR 3000/4000 PRODUCT FAMILIES ONLY
84F-016	S5 PERFORMANCE LIMITING SECONDARY SHIFT SCHEDULE, AVAILABLE FOR 3000/4000 PRODUCT FAMILIES ONLY
84G-017	2500 RPM PRIMARY MODE SHIFT SPEED
84H-017	2500 RPM SECONDARY MODE SHIFT SPEED
84J-000	ENGINE BRAKE RANGE PRESELECT RECOMMENDED BY DTNA AND ALLISON, THIS DEFINED BY ENGINE AND VOCATIONAL USAGE



Prepared for:
 Jeff Weber
 EAGLE MOUNTAIN CITY
 2565 N Pony Express Pkwy
 Eagle Mountain, UT 84005
 Phone: 801-789-6679

Prepared by:
 Skylar Dyreng
 PREMIER TRUCK GROUP
 2240 SOUTH 5370 WEST
 SALT LAKE CITY, UT 84120
 Phone:

Data Code	Description
84K-000	ENGINE BRAKE RANGE ALTERNATE PRESELECT RECOMMENDED BY DTNA AND ALLISON, THIS DEFINED BY ENGINE AND VOCATIONAL USAGE
84N-200	FUEL SENSE 2.0 DISABLED - PERFORMANCE - TABLE BASED
84U-000	DRIVER SWITCH INPUT - DEFAULT - NO SWITCHES
34C-002	ELECTRONIC TRANSMISSION CUSTOMER ACCESS CONNECTOR MOUNTED BACK OF CAB
362-823	CUSTOMER INSTALLED CHELSEA 280 SERIES PTO
363-002	PTO MOUNTING, RH SIDE OF MAIN TRANSMISSION
341-018	MAGNETIC PLUGS, ENGINE DRAIN, TRANSMISSION DRAIN, AXLE(S) FILL AND DRAIN
345-003	PUSH BUTTON ELECTRONIC SHIFT CONTROL, DASH MOUNTED
97G-004	TRANSMISSION PROGNOSTICS - ENABLED 2013
370-015	WATER TO OIL TRANSMISSION COOLER, IN RADIATOR END TANK
346-003	TRANSMISSION OIL CHECK AND FILL WITH ELECTRONIC OIL LEVEL CHECK
35T-001	SYNTHETIC TRANSMISSION FLUID (TES-295 COMPLIANT)

Front Axle and Equipment

400-1EW	DETROIT DA-F-8.0-3 8,000# FF1 71.5 KPI/3.74 DROP SINGLE FRONT AXLE
402-020	MERITOR 15X4 Q+ CAM FRONT BRAKES
403-002	NON-ASBESTOS FRONT BRAKE LINING
419-001	CAST IRON OUTBOARD FRONT BRAKE DRUMS
409-006	FRONT OIL SEALS
408-001	VENTED FRONT HUB CAPS WITH WINDOW, CENTER AND SIDE PLUGS - OIL
416-022	STANDARD SPINDLE NUTS FOR ALL AXLES
405-002	MERITOR AUTOMATIC FRONT SLACK ADJUSTERS
536-050	TRW THP-60 POWER STEERING
539-003	POWER STEERING PUMP
534-015	2 QUART SEE THROUGH POWER STEERING RESERVOIR
40T-003	SYNTHETIC 40/50W FRONT AXLE LUBE



Prepared for:
 Jeff Weber
 EAGLE MOUNTAIN CITY
 2565 N Pony Express Pkwy
 Eagle Mountain, UT 84005
 Phone: 801-789-6679

Prepared by:
 Skylar Dyreng
 PREMIER TRUCK GROUP
 2240 SOUTH 5370 WEST
 SALT LAKE CITY, UT 84120
 Phone:

Data Code	Description
Front Suspension	
620-032	8,000# TAPERLEAF FRONT SUSPENSION
619-005	MAINTENANCE FREE RUBBER BUSHINGS - FRONT SUSPENSION
410-001	FRONT SHOCK ABSORBERS
Rear Axle and Equipment	
420-1M8	MS-19-14X 19,000# R-SERIES SINGLE REAR AXLE
421-614	6.14 REAR AXLE RATIO
424-001	IRON REAR AXLE CARRIER WITH STANDARD AXLE HOUSING
386-073	MXL 17T MERITOR EXTENDED LUBE MAIN DRIVELINE WITH HALF ROUND YOKES
452-001	DRIVER CONTROLLED TRACTION DIFFERENTIAL - SINGLE REAR AXLE
878-018	(1) DRIVER CONTROLLED DIFFERENTIAL LOCK REAR VALVE FOR SINGLE DRIVE AXLE
87B-004	BLINKING LAMP WITH EACH MODE SWITCH, DIFFERENTIAL UNLOCK WITH IGNITION OFF, ACTIVE <5 MPH
423-020	MERITOR 16.5X7 Q+ CAST SPIDER CAM REAR BRAKES, DOUBLE ANCHOR, FABRICATED SHOES
433-002	NON-ASBESTOS REAR BRAKE LINING
434-012	BRAKE CAMS AND CHAMBERS ON REAR SIDE OF DRIVE AXLE(S)
451-001	CAST IRON OUTBOARD REAR BRAKE DRUMS
440-006	REAR OIL SEALS
426-100	WABCO TRISTOP D LONGSTROKE 1-DRIVE AXLE SPRING PARKING CHAMBERS
428-002	MERITOR AUTOMATIC REAR SLACK ADJUSTERS
41T-002	CURRENT AVAILABLE SYNTHETIC 75W-90 REAR AXLE LUBE
Rear Suspension	
622-1FE	20,000# FLAT LEAF SPRING REAR SUSPENSION WITH HELPER, WITH RADIUS ROD
621-001	SPRING SUSPENSION - NO AXLE SPACERS
431-001	STANDARD AXLE SEATS IN AXLE CLAMP GROUP
623-005	FORE/AFT CONTROL RODS
Brake System	



Prepared for:
 Jeff Weber
 EAGLE MOUNTAIN CITY
 2565 N Pony Express Pkwy
 Eagle Mountain, UT 84005
 Phone: 801-789-6679

Prepared by:
 Skylar Dyreng
 PREMIER TRUCK GROUP
 2240 SOUTH 5370 WEST
 SALT LAKE CITY, UT 84120
 Phone:

Data Code	Description
018-002	AIR BRAKE PACKAGE
490-101	WABCO 4S/4M ABS WITH TRACTION CONTROL, WITH ATC OFF-ROAD SWITCH
871-001	REINFORCED NYLON, FABRIC BRAID AND WIRE BRAID CHASSIS AIR LINES
904-001	FIBER BRAID PARKING BRAKE HOSE
412-001	STANDARD BRAKE SYSTEM VALVES
46D-002	STANDARD AIR SYSTEM PRESSURE PROTECTION SYSTEM
413-002	STD U.S. FRONT BRAKE VALVE
432-003	RELAY VALVE WITH 5-8 PSI CRACK PRESSURE, NO REAR PROPORTIONING VALVE
480-088	WABCO SYSTEM SAVER HP WITH INTEGRAL AIR GOVERNOR AND HEATER
479-015	AIR DRYER FRAME MOUNTED
460-001	STEEL AIR BRAKE RESERVOIRS
607-001	CLEAR FRAME RAILS FROM BACK OF CAB TO FRONT REAR SUSPENSION BRACKET, BOTH RAILS OUTBOARD
477-011	PETCOCK DRAIN VALVES ON ALL AIR TANK(S)

Trailer Connections

296-010	PRIMARY CONNECTOR/RECEPTACLE WIRED FOR SEPARATE STOP/TURN, ABS CENTER PIN POWERED THROUGH IGNITION
297-001	SAE J560 7-WAY PRIMARY TRAILER CABLE RECEPTACLE MOUNTED END OF FRAME
335-004	UPGRADED CHASSIS MULTIPLEXING UNIT
32A-002	UPGRADED BULKHEAD MULTIPLEXING UNIT

Wheelbase & Frame

545-380	3800MM (150 INCH) WHEELBASE
546-1AX	5/16X2-1/2 3X10-1/8 INCH STEEL FRAME (7.94MMX257.2MM/0.312X10.13 INCH) 50KSI
548-803	BODY COMPANY INSTALLED ADDITIONAL FRONT FRAME REINFORCEMENT FOR SNOW PLOW
552-025	1375MM (54 INCH) REAR FRAME OVERHANG
55W-005	FRAME OVERHANG RANGE: 51 INCH TO 60 INCH
AC8-99D	CALC'D BACK OF CAB TO REAR SUSP C/L (CA) : 84.06 in
AE8-99D	CALCULATED EFFECTIVE BACK OF CAB TO REAR SUSPENSION C/L (CA) : 81.06 in
AE4-99D	CALC'D FRAME LENGTH - OVERALL : 242.68



Prepared for:
 Jeff Weber
 EAGLE MOUNTAIN CITY
 2565 N Pony Express Pkwy
 Eagle Mountain, UT 84005
 Phone: 801-789-6679

Prepared by:
 Skylar Dyreng
 PREMIER TRUCK GROUP
 2240 SOUTH 5370 WEST
 SALT LAKE CITY, UT 84120
 Phone:

Data Code	Description
FSS-0LH	CALCULATED FRAME SPACE LH SIDE : 49.34 in
FSS-0RH	CALCULATED FRAME SPACE RH SIDE : 112.01 in
AM6-99D	CALC'D SPACE AVAILABLE FOR DECKPLATE : 78.45 in
553-001	SQUARE END OF FRAME
587-003	REAR TOW HOOKS
550-001	FRONT CLOSING CROSSMEMBER
559-001	STANDARD WEIGHT ENGINE CROSSMEMBER
561-001	STANDARD CROSSMEMBER BACK OF TRANSMISSION
562-001	STANDARD MIDSHIP #1 CROSSMEMBER(S)
572-001	STANDARD REARMOST CROSSMEMBER
565-001	STANDARD SUSPENSION CROSSMEMBER

Chassis Equipment

556-1AP	THREE-PIECE 14 INCH PAINTED STEEL BUMPER WITH COLLAPSIBLE ENDS
558-001	FRONT TOW HOOKS - FRAME MOUNTED
574-001	BUMPER MOUNTING FOR SINGLE LICENSE PLATE
586-024	FENDER AND FRONT OF HOOD MOUNTED FRONT MUDFLAPS
551-002	HUCK-SPIN ROUND COLLAR CHASSIS FASTENERS

Fuel Tanks

204-215	50 GALLON/189 LITER SHORT RECTANGULAR ALUMINUM FUEL TANK - LH
218-005	RECTANGULAR FUEL TANK(S)
215-005	PLAIN ALUMINUM/PAINTED STEEL FUEL/HYDRAULIC TANK(S) WITH PAINTED BANDS
212-007	FUEL TANK(S) FORWARD
664-003	BLACK STEP FINISH
205-001	FUEL TANK CAP(S)
122-1J1	DETROIT FUEL/WATER SEPARATOR WITH WATER IN FUEL SENSOR, HAND PRIMER AND 12 VOLT PREHEATER"
216-020	EQUIFLO INBOARD FUEL SYSTEM
202-016	HIGH TEMPERATURE REINFORCED NYLON FUEL LINE

Tires



Prepared for:
 Jeff Weber
 EAGLE MOUNTAIN CITY
 2565 N Pony Express Pkwy
 Eagle Mountain, UT 84005
 Phone: 801-789-6679

Prepared by:
 Skylar Dyreng
 PREMIER TRUCK GROUP
 2240 SOUTH 5370 WEST
 SALT LAKE CITY, UT 84120
 Phone:

Data Code	Description
093-1RK	MICHELIN X WORKS Z 11R22.5 16 PLY RADIAL FRONT TIRES
094-2A7	MICHELIN XDS2 11R22.5 16 PLY RADIAL REAR TIRES

Hubs

418-060	CONMET PRESET PLUS PREMIUM IRON FRONT HUBS
450-060	CONMET PRESET PLUS PREMIUM IRON REAR HUBS

Wheels

502-693	ALCOA LVL ONE 88267X 22.5X8.25 10-HUB PILOT 5.80 INSET ALUMINUM DISC FRONT WHEELS
505-693	ALCOA LVL ONE 88267X 22.5X8.25 10-HUB PILOT ALUMINUM DISC REAR WHEELS
496-011	FRONT WHEEL MOUNTING NUTS
497-011	REAR WHEEL MOUNTING NUTS
495-998	NO PUSHER/TAG WHEEL MOUNTING NUTS

Cab Exterior

829-071	106 INCH BBC FLAT ROOF ALUMINUM CONVENTIONAL CAB
650-008	AIR CAB MOUNTING
648-002	NONREMOVABLE BUGSCREEN MOUNTED BEHIND GRILLE
678-018	LH AND RH EXTERIOR GRAB HANDLES WITH SINGLE RUBBER INSERT
646-011	STATIONARY PAINTED FULL GRILLE FOR CHASSIS WITHOUT INTEGRAL FRONT FRAME EXTENSIONS
65X-011	MOLD-IN COLOR HOOD MOUNTED AIR INTAKE GRILLE
644-004	FIBERGLASS HOOD
690-002	TUNNEL/FIREWALL LINER
727-1AF	SINGLE 14 INCH ROUND HADLEY AIR HORN UNDER LH DECK
726-001	SINGLE ELECTRIC HORN
728-001	SINGLE HORN SHIELD
657-001	DOOR LOCKS AND IGNITION SWITCH KEYED THE SAME
78G-002	KEY QUANTITY OF 2
575-001	REAR LICENSE PLATE MOUNT END OF FRAME



Prepared for:
 Jeff Weber
 EAGLE MOUNTAIN CITY
 2565 N Pony Express Pkwy
 Eagle Mountain, UT 84005
 Phone: 801-789-6679

Prepared by:
 Skylar Dyreng
 PREMIER TRUCK GROUP
 2240 SOUTH 5370 WEST
 SALT LAKE CITY, UT 84120
 Phone:

Data Code	Description
312-089	LED HEADLIGHT ASSEMBLY AND INCANDESCENT MARKER/TURN LAMP
302-047	LED AERODYNAMIC MARKER LIGHTS
311-001	DAYTIME RUNNING LIGHTS
294-1AY	INTEGRAL LED STOP/TAIL/BACKUP LIGHTS
300-015	STANDARD FRONT TURN SIGNAL LAMPS
744-1BC	DUAL WEST COAST BRIGHT FINISH HEATED MIRRORS WITH LH AND RH REMOTE
797-001	DOOR MOUNTED MIRRORS
796-001	102 INCH EQUIPMENT WIDTH
743-204	LH AND RH 8 INCH BRIGHT FINISH CONVEX MIRRORS MOUNTED UNDER PRIMARY MIRRORS
74A-001	RH DOWN VIEW MIRROR
729-001	STANDARD SIDE/REAR REFLECTORS
677-054	RH AFTERTREATMENT SYSTEM CAB ACCESS WITH PLAIN DIAMOND PLATE COVER
764-010	COMPOSITE EXTERIOR SUN VISOR
768-043	63X14 INCH TINTED REAR WINDOW
661-003	TINTED DOOR GLASS LH AND RH WITH TINTED NON-OPERATING WING WINDOWS
654-027	RH AND LH ELECTRIC POWERED WINDOWS, PASSENGER SWITCHES ON DOOR(S)
769-002	LOWER RH DOOR WINDOW WITH FRESNEL LENS
663-013	1-PIECE SOLAR GREEN GLASS WINDSHIELD
659-020	2 GALLON WINDSHIELD WASHER RESERVOIR WITH FLUID LEVEL INDICATOR, FRAME MOUNTED

Cab Interior

707-1AM	OPAL GRAY CLOTH INTERIOR
706-016	MOLDED DOOR PANEL WITH UPPER VINYL INSERTS
708-016	MOLDED DOOR PANEL WITH UPPER VINYL INSERTS
772-006	BLACK MATS WITH SINGLE INSULATION
785-004	DASH MOUNTED ASH TRAY(S) WITHOUT LIGHTER
691-008	FORWARD ROOF MOUNTED CONSOLE WITH UPPER STORAGE COMPARTMENTS WITHOUT NETTING
696-012	CENTER STORAGE CONSOLE MOUNTED ON BACKWALL



Prepared for:
 Jeff Weber
 EAGLE MOUNTAIN CITY
 2565 N Pony Express Pkwy
 Eagle Mountain, UT 84005
 Phone: 801-789-6679

Prepared by:
 Skylar Dyreng
 PREMIER TRUCK GROUP
 2240 SOUTH 5370 WEST
 SALT LAKE CITY, UT 84120
 Phone:

Data Code	Description
693-003	PLASTIC MANIFEST BOX - LH DOOR
742-007	(2) CUP HOLDERS LH AND RH DASH
680-007	GRAY/CHARCOAL WING DASH
860-004	SMART SWITCH EXPANSION MODULE
720-002	2-1/2 LB. FIRE EXTINGUISHER
700-002	HEATER, DEFROSTER AND AIR CONDITIONER
701-008	STANDARD HVAC DUCTING WITH SNOW SHIELD FOR FRESH AIR INTAKE
703-005	MAIN HVAC CONTROLS WITH RECIRCULATION SWITCH
170-015	STANDARD HEATER PLUMBING
130-041	VALEO HEAVY DUTY A/C REFRIGERANT COMPRESSOR
702-002	BINARY CONTROL, R-134A
739-034	PREMIUM INSULATION
285-013	SOLID-STATE CIRCUIT PROTECTION AND FUSES
280-007	12V NEGATIVE GROUND ELECTRICAL SYSTEM
324-011	DOMED DOOR ACTIVATED LH AND RH, DUAL READING LIGHTS, FORWARD CAB ROOF
655-005	LH AND RH ELECTRIC DOOR LOCKS
284-101	(1) 12V POWER SUPPLY (1) DUAL 2.1 AMP USB CHARGER IN DASH
722-002	TRIANGULAR REFLECTORS WITHOUT FLARES
756-339	PREMIUM ISRINGHAUSEN HIGH BACK AIR SUSPENSION DRIVERS SEAT WITH 2 AIR LUMBAR, INTEGRATED CUSHION EXTENSION, TILT AND ADJUSTABLE SHOCK
760-337	BASIC ISRINGHAUSEN HIGH BACK NON SUSPENSION TOOL BOX PASSENGER SEAT
759-007	DUAL DRIVER SEAT ARMRESTS, NO PASSENGER SEAT ARMRESTS
711-004	LH AND RH INTEGRAL DOOR PANEL ARMRESTS
758-036	VINYL WITH VINYL INSERT DRIVER SEAT
761-036	VINYL WITH VINYL INSERT PASSENGER SEAT
763-101	BLACK SEAT BELTS
532-002	ADJUSTABLE TILT AND TELESCOPING STEERING COLUMN
540-016	18 INCH (450MM) LEATHER WRAPPED STEERING WHEEL
765-002	DRIVER AND PASSENGER INTERIOR SUN VISORS



Prepared for:
 Jeff Weber
 EAGLE MOUNTAIN CITY
 2565 N Pony Express Pkwy
 Eagle Mountain, UT 84005
 Phone: 801-789-6679

Prepared by:
 Skylar Dyreng
 PREMIER TRUCK GROUP
 2240 SOUTH 5370 WEST
 SALT LAKE CITY, UT 84120
 Phone:

Data Code	Description
Instruments & Controls	
732-003	WOODGRAIN DRIVER INSTRUMENT PANEL
734-003	WOODGRAIN CENTER INSTRUMENT PANEL
870-001	BLACK GAUGE BEZELS
486-001	LOW AIR PRESSURE INDICATOR LIGHT AND AUDIBLE ALARM
840-002	2 INCH PRIMARY AND SECONDARY AIR PRESSURE GAUGES
198-003	DASH MOUNTED AIR RESTRICTION INDICATOR WITH GRADUATIONS
149-017	ELECTRONIC CRUISE CONTROL WITH SWITCHES ON AUXILIARY GAUGE PANEL (B DASH PANEL)
156-007	KEY OPERATED IGNITION SWITCH AND INTEGRAL START POSITION; 4 POSITION OFF/RUN/START/ACCESSORY
811-042	ICU3S, 132X48 DISPLAY WITH DIAGNOSTICS, 28 LED WARNING LAMPS AND DATA LINKED
160-038	HEAVY DUTY ONBOARD DIAGNOSTICS INTERFACE CONNECTOR LOCATED BELOW LH DASH
844-001	2 INCH ELECTRIC FUEL GAUGE
148-003	PROGRAMMABLE RPM CONTROL - ELECTRONIC ENGINE
856-001	ELECTRICAL ENGINE COOLANT TEMPERATURE GAUGE
864-001	2 INCH TRANSMISSION OIL TEMPERATURE GAUGE
830-017	ENGINE AND TRIP HOUR METERS INTEGRAL WITHIN DRIVER DISPLAY
372-035	(1) DASH MOUNTED PTO SWITCH WITH INDICATOR LAMP
852-002	ELECTRIC ENGINE OIL PRESSURE GAUGE
679-001	OVERHEAD INSTRUMENT PANEL
746-137	AM/FM/WB WORLD TUNER RADIO WITH BLUETOOTH, USB AND AUXILIARY INPUTS, J1939
747-001	DASH MOUNTED RADIO
750-002	(2) RADIO SPEAKERS IN CAB
748-014	COBRA 29NW LTD CLASSIC FACTORY INSTALLED CB RADIO
749-001	ROOF/OVERHEAD CONSOLE CB RADIO PROVISION



Prepared for:
 Jeff Weber
 EAGLE MOUNTAIN CITY
 2565 N Pony Express Pkwy
 Eagle Mountain, UT 84005
 Phone: 801-789-6679

Prepared by:
 Skylar Dyreng
 PREMIER TRUCK GROUP
 2240 SOUTH 5370 WEST
 SALT LAKE CITY, UT 84120
 Phone:

Data Code	Description
752-017	MULTI-BAND AM/FM/WB/CB LH MIRROR MOUNTED ANTENNA SYSTEM
810-027	ELECTRONIC MPH SPEEDOMETER WITH SECONDARY KPH SCALE, WITHOUT ODOMETER
817-001	STANDARD VEHICLE SPEED SENSOR
812-001	ELECTRONIC 3000 RPM TACHOMETER
162-011	IDLE LIMITER, ELECTRONIC ENGINE
329-010	TWO ON/OFF ROCKER SWITCHES IN THE DASH WITH INDICATOR LIGHTS AND WIRE ROUTED TO CHASSIS AT BACK OF CAB, LABEL OPT
81Y-001	PRE-TRIP LAMP INSPECTION, ALL OUTPUTS FLASH, WITH SMART SWITCH
836-015	DIGITAL VOLTAGE DISPLAY INTEGRAL WITH DRIVER DISPLAY
660-001	SINGLE ELECTRIC WINDSHIELD WIPER MOTOR WITH DELAY AND ARCTIC TYPE BLADES
304-038	MARKER LIGHT SWITCH INTEGRAL WITH HEADLIGHT SWITCH AND SINGLE CONNECTOR AND SWITCH FOR CUSTOMER FURNISHED SNOW PLOW LIGHTS, LOW BEAMS OFF WITH HIGH BEAMS
882-009	ONE VALVE PARKING BRAKE SYSTEM WITH WARNING INDICATOR
299-013	SELF CANCELING TURN SIGNAL SWITCH WITH DIMMER, WASHER/WIPER AND HAZARD IN HANDLE
298-039	INTEGRAL ELECTRONIC TURN SIGNAL FLASHER WITH HAZARD LAMPS OVERRIDING STOP LAMPS

Design

065-000 PAINT: ONE SOLID COLOR

Color

980-5F6 CAB COLOR A: L0006EY WHITE ELITE EY
 986-020 BLACK, HIGH SOLIDS POLYURETHANE CHASSIS PAINT
 964-3A1 BUMPER PAINT: N0001EA BLACK ELITE SS
 976-995 SUNVISOR PAINTED SAME AS CAB COLOR A
 963-003 STANDARD E COAT/UNDERCOATING

Certification / Compliance

996-001 U.S. FMVSS CERTIFICATION, EXCEPT SALES CABS AND GLIDER KITS

Secondary Factory Options



Prepared for:
 Jeff Weber
 EAGLE MOUNTAIN CITY
 2565 N Pony Express Pkwy
 Eagle Mountain, UT 84005
 Phone: 801-789-6679

Prepared by:
 Skylar Dyreng
 PREMIER TRUCK GROUP
 2240 SOUTH 5370 WEST
 SALT LAKE CITY, UT 84120
 Phone:

Data Code	Description
998-032	CORPORATE PDI CENTER OPTION INSTALLATION/MODIFICATION ONLY

Raw Performance Data

AE8-99D	CALCULATED EFFECTIVE BACK OF CAB TO REAR SUSPENSION C/L (CA) : 81.06 in
AM6-99D	CALC'D SPACE AVAILABLE FOR DECKPLATE : 78.45 in

Extended Warranty

WAG-010	TOWING: 1 YEAR/UNLIMITED MILES/KM EXTENDED TOWING COVERAGE \$550 CAP FEX APPLIES
---------	---

Dealer Installed Options

		Weight Front	Weight Rear
PAINT	PAINT STATIONARY GRILLE BLACK; REF 025380027284	0	0
Total Dealer Installed Options		0 lbs	0 lbs

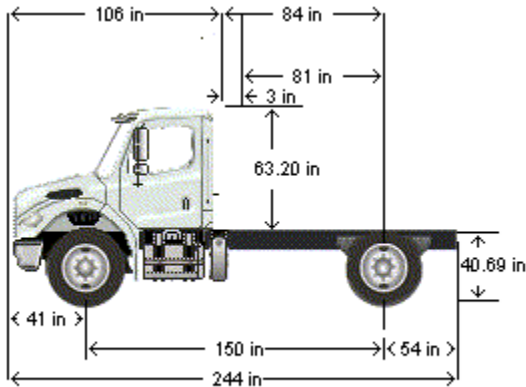
(***) All cost increases for major components (Engines, Transmissions, Axles, Front and Rear Tires) and government mandated requirements, tariffs, and raw material surcharges will be passed through and added to factory invoices.



Prepared for:
 Jeff Weber
 EAGLE MOUNTAIN CITY
 2565 N Pony Express Pkwy
 Eagle Mountain, UT 84005
 Phone: 801-789-6679

Prepared by:
 Skylar Dyreng
 PREMIER TRUCK GROUP
 2240 SOUTH 5370 WEST
 SALT LAKE CITY, UT 84120
 Phone:

D I M E N S I O N S



VEHICLE SPECIFICATIONS SUMMARY - DIMENSIONS

Model	M2106
Wheelbase (545)	3800MM (150 INCH) WHEELBASE
Rear Frame Overhang (552).....	1375MM (54 INCH) REAR FRAME OVERHANG
Fifth Wheel (578)	NO FIFTH WHEEL
Mounting Location (577)	NO FIFTH WHEEL LOCATION
Maximum Forward Position (in).....	0
Maximum Rearward Position (in)	0
Amount of Slide Travel (in).....	0
Slide Increment (in).....	0
Desired Slide Position (in).....	0.0
Cab Size (829).....	106 INCH BBC FLAT ROOF ALUMINUM CONVENTIONAL CAB
Sleeper (682).....	NO SLEEPER BOX/SLEEPER CAB
Exhaust System (016)	RH OUTBOARD UNDER STEP MOUNTED HORIZONTAL AFTERTREATMENT SYSTEM ASSEMBLY WITH RH HORIZONTAL TAILPIPE

TABLE SUMMARY - DIMENSIONS



Prepared for:
 Jeff Weber
 EAGLE MOUNTAIN CITY
 2565 N Pony Express Pkwy
 Eagle Mountain, UT 84005
 Phone: 801-789-6679

Prepared by:
 Skylar Dyreng
 PREMIER TRUCK GROUP
 2240 SOUTH 5370 WEST
 SALT LAKE CITY, UT 84120
 Phone:

Dimensions	Inches
Bumper to Back of Cab (BBC)	106.3
Bumper to Centerline of Front Axle (BA)	40.7
Min. Cab to Body Clearance (CB)	3.0
Back of Cab to Centerline of Rear Axle(s) (CA)	84.1
Effective Back of Cab to Centerline of Rear Axle(s) (Effective CA)	81.1
Back of Cab Protrusions (Exhaust/Intake) (CP)	2.0
Back of Cab Protrusions (Side Extenders/Trim Tab) (CP)	0.0
Back of Cab Protrusions (CNG Tank)	0.0
Back of Cab Clearance (CL)	3.0
Back of Cab to End of Frame	138.2
Cab Height (CH)	63.2
Wheelbase (WB)	149.6
Frame Overhang (OH)	54.1
Overall Frame Length	242.7
Overall Length (OAL)	244.5
Rear Axle Spacing	0.0
Unladen Frame Height at Centerline of Rear Axle	40.7

Performance calculations are estimates only. If performance calculations are critical, please contact Customer Application Engineering.



Prepared for:
 Jeff Weber
 EAGLE MOUNTAIN CITY
 2565 N Pony Express Pkwy
 Eagle Mountain, UT 84005
 Phone: 801-789-6679

Prepared by:
 Skylar Dyreng
 PREMIER TRUCK GROUP
 2240 SOUTH 5370 WEST
 SALT LAKE CITY, UT 84120
 Phone:

Q U O T A T I O N

M2 106 CONVENTIONAL CHASSIS

SET BACK AXLE - TRUCK
 CUM B6.7 325 HP @ 2400 RPM, 2600 GOV, 750 LB-FT @
 1800 RPM
 ALLISON 3500 RDS AUTOMATIC TRANSMISSION WITH
 PTO PROVISION
 MS-19-14X 19,000# R-SERIES SINGLE REAR AXLE
 20,000# FLAT LEAF SPRING REAR SUSPENSION WITH
 HELPER, WITH RADIUS ROD
 DETROIT DA-F-8.0-3 8,000# FF1 71.5 KPI/3.74 DROP
 SINGLE FRONT AXLE

8,000# TAPERLEAF FRONT SUSPENSION
 106 INCH BBC FLAT ROOF ALUMINUM CONVENTIONAL
 CAB
 3800MM (150 INCH) WHEELBASE
 5/16X2-1/2 3X10-1/8 INCH STEEL FRAME
 (7.94MMX257.2MM/0.312X10.13 INCH) 50KSI
 1375MM (54 INCH) REAR FRAME OVERHANG
 BODY COMPANY INSTALLED ADDITIONAL FRONT
 FRAME REINFORCEMENT FOR SNOW PLOW

		PER UNIT		TOTAL
VEHICLE PRICE	TOTAL # OF UNITS (1)	\$ 76,043	\$	76,043
EXTENDED WARRANTY		\$ 200	\$	200
DEALER INSTALLED OPTIONS		\$ 516	\$	516
CUSTOMER PRICE BEFORE TAX		\$ 76,759	\$	76,759

TAXES AND FEES

FEDERAL EXCISE TAX (FET)	\$	(176)	\$	(176)
TAXES AND FEES	\$	0	\$	0
OTHER CHARGES	\$	0	\$	0

TRADE-IN

TRADE-IN ALLOWANCE	\$	(0)	\$	(0)
---------------------------	----	-----	----	-----

BALANCE DUE		(LOCAL CURRENCY) \$	76,583	\$	76,583
--------------------	--	----------------------------	---------------	-----------	---------------

APPROVAL:

Please indicate your acceptance of this quotation by signing below:

Customer: X _____ Date: ___ / ___ / ___.



Financing that works for you.

See your local dealer for a competitive quote from Daimler Truck Financial, or contact us at Information@dtfoffers.com.

Daimler Truck Financial offers a variety of finance, lease and insurance solutions to fit your business needs. For more information about our products and services, visit our website at www.daimler-truckfinancial.com.



Prepared for:
Jeff Weber
EAGLE MOUNTAIN CITY
2565 N Pony Express Pkwy
Eagle Mountain, UT 84005
Phone: 801-789-6679

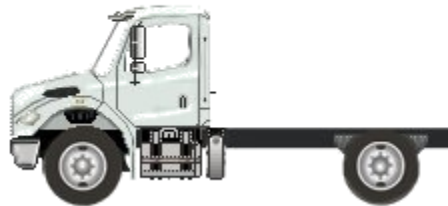
Prepared by:
Skylar Dyreng
PREMIER TRUCK GROUP
2240 SOUTH 5370 WEST
SALT LAKE CITY, UT 84120
Phone:

A proposal for
EAGLE MOUNTAIN CITY

Prepared by
PREMIER TRUCK GROUP
Skylar Dyreng

Aug 17, 2021

Freightliner M2 106



Components shown may not reflect all spec'd options and are not to scale



Prepared for:
 Jeff Weber
 EAGLE MOUNTAIN CITY
 2565 N Pony Express Pkwy
 Eagle Mountain, UT 84005
 Phone: 801-789-6679

Prepared by:
 Skylar Dyreng
 PREMIER TRUCK GROUP
 2240 SOUTH 5370 WEST
 SALT LAKE CITY, UT 84120
 Phone:

S P E C I F I C A T I O N P R O P O S A L

Data Code	Description
Price Level	
PRL-23M	M2 PRL-23M (EFF:01/21/20)
Data Version	
DRL-011	SPECPRO21 DATA RELEASE VER 011
Interior Convenience/Driver Retention Package	
055-002	INTERIOR CONVENIENCE PACKAGE
Vehicle Configuration	
001-172	M2 106 CONVENTIONAL CHASSIS
004-222	2022 MODEL YEAR SPECIFIED
002-004	SET BACK AXLE - TRUCK
019-002	STRAIGHT TRUCK PROVISION
003-001	LH PRIMARY STEERING LOCATION
General Service	
AA1-002	TRUCK CONFIGURATION
AA6-001	DOMICILED, USA 50 STATES (INCLUDING CALIFORNIA AND CARB OPT-IN STATES)
A85-010	UTILITY/REPAIR/MAINTENANCE SERVICE
A84-1GM	GOVERNMENT BUSINESS SEGMENT
AA4-010	DIRT/SAND/ROCK COMMODITY
AA5-006	TERRAIN/DUTY: 10% (SOME) OF THE TIME, IN TRANSIT, IS SPENT ON NON-PAVED ROADS
AB1-008	MAXIMUM 8% EXPECTED GRADE
AB5-003	MAINTAINED GRAVEL OR CRUSHED ROCK - MOST SEVERE IN-TRANSIT (BETWEEN SITES) ROAD SURFACE
995-091	MEDIUM TRUCK WARRANTY
A66-99D	EXPECTED FRONT AXLE(S) LOAD : 12000.0 lbs
A68-99D	EXPECTED REAR DRIVE AXLE(S) LOAD : 21000.0 lbs
A67-99D	EXPECTED PUSHER AXLE(S) LOAD : 0.0 lbs
A63-99D	EXPECTED GROSS VEHICLE WEIGHT CAPACITY : 33000.0 lbs



Prepared for:
 Jeff Weber
 EAGLE MOUNTAIN CITY
 2565 N Pony Express Pkwy
 Eagle Mountain, UT 84005
 Phone: 801-789-6679

Prepared by:
 Skylar Dyreng
 PREMIER TRUCK GROUP
 2240 SOUTH 5370 WEST
 SALT LAKE CITY, UT 84120
 Phone:

Data Code	Description
Truck Service	
AA3-004	END DUMP BODY
AF3-1W0	HENDERSON
AF7-99D	EXPECTED BODY/PAYLOAD CG HEIGHT ABOVE FRAME "XX" INCHES : 32.0 in
Engine	
101-21X	CUM B6.7 300 HP @ 2600 RPM, 2600 GOV, 660 LB-FT @ 1600 RPM
Electronic Parameters	
79A-070	70 MPH ROAD SPEED LIMIT
79B-000	CRUISE CONTROL SPEED LIMIT SAME AS ROAD SPEED LIMIT
79M-001	PTO MODE BRAKE OVERRIDE - SERVICE BRAKE APPLIED
79P-002	PTO RPM WITH CRUISE SET SWITCH - 700 RPM
79Q-002	PTO RPM WITH CRUISE RESUME SWITCH - 700 RPM
79S-001	PTO MODE CANCEL VEHICLE SPEED - 5 MPH
79U-007	PTO GOVERNOR RAMP RATE - 250 RPM PER SECOND
80G-002	PTO MINIMUM RPM - 700
80J-002	REGEN INHIBIT SPEED THRESHOLD - 5 MPH
Engine Equipment	
99C-021	2016 ONBOARD DIAGNOSTICS/2010 EPA/CARB/GHG21 CONFIGURATION
99D-011	2008 CARB EMISSION CERTIFICATION - CLEAN IDLE (INCLUDES 6X4 INCH LABEL ON LOWER FORWARD CORNER OF DRIVER DOOR)
13E-001	STANDARD OIL PAN
105-001	ENGINE MOUNTED OIL CHECK AND FILL
014-099	SIDE OF HOOD AIR INTAKE WITH FIREWALL MOUNTED DONALDSON AIR CLEANER
124-1D7	DR 12V 160 AMP 28-SI QUADRAMOUNT PAD ALTERNATOR WITH REMOTE BATTERY VOLT SENSE
292-205	(2) DTNA GENUINE, FLOODED STARTING, MIN 1900CCA, 350RC, THREADED STUD BATTERIES
290-017	BATTERY BOX FRAME MOUNTED
281-001	STANDARD BATTERY JUMPERS
282-001	SINGLE BATTERY BOX FRAME MOUNTED LH SIDE UNDER CAB



Prepared for:
 Jeff Weber
 EAGLE MOUNTAIN CITY
 2565 N Pony Express Pkwy
 Eagle Mountain, UT 84005
 Phone: 801-789-6679

Prepared by:
 Skylar Dyreng
 PREMIER TRUCK GROUP
 2240 SOUTH 5370 WEST
 SALT LAKE CITY, UT 84120
 Phone:

Data Code	Description
291-017	WIRE GROUND RETURN FOR BATTERY CABLES WITH ADDITIONAL FRAME GROUND RETURN
289-001	NON-POLISHED BATTERY BOX COVER
87P-001	CAB AUXILIARY POWER CABLE
293-058	POSITIVE LOAD DISCONNECT WITH CAB MOUNTED CONTROL SWITCH MOUNTED OUTBOARD DRIVER SEAT
295-029	POSITIVE AND NEGATIVE POSTS FOR JUMPSTART LOCATED ON FRAME NEXT TO STARTER
107-032	CUMMINS TURBOCHARGED 18.7 CFM AIR COMPRESSOR WITH INTERNAL SAFETY VALVE
108-002	STANDARD MECHANICAL AIR COMPRESSOR GOVERNOR
131-013	AIR COMPRESSOR DISCHARGE LINE
152-041	ELECTRONIC ENGINE INTEGRAL SHUTDOWN PROTECTION SYSTEM
128-076	CUMMINS ENGINE INTEGRAL BRAKE WITH VARIABLE GEOMETRY TURBO ON/OFF
016-1C3	RH OUTBOARD UNDER STEP MOUNTED HORIZONTAL AFTERTREATMENT SYSTEM ASSEMBLY WITH RH HORIZONTAL TAILPIPE
28F-002	ENGINE AFTERTREATMENT DEVICE, AUTOMATIC OVER THE ROAD REGENERATION AND DASH MOUNTED REGENERATION REQUEST SWITCH
239-001	STANDARD EXHAUST SYSTEM LENGTH
237-052	RH STANDARD HORIZONTAL TAILPIPE
23U-001	6 GALLON DIESEL EXHAUST FLUID TANK
30N-003	100 PERCENT DIESEL EXHAUST FLUID FILL
43X-002	LH MEDIUM DUTY STANDARD DIESEL EXHAUST FLUID TANK LOCATION
23Y-001	STANDARD DIESEL EXHAUST FLUID PUMP MOUNTING
43Y-001	STANDARD DIESEL EXHAUST FLUID TANK CAP
273-058	AIR POWERED ON/OFF ENGINE FAN CLUTCH
276-001	AUTOMATIC FAN CONTROL WITHOUT DASH SWITCH, NON ENGINE MOUNTED
110-003	CUMMINS SPIN ON FUEL FILTER
118-001	FULL FLOW OIL FILTER
266-100	700 SQUARE INCH ALUMINUM RADIATOR
103-039	ANTIFREEZE TO -34F, OAT (NITRITE AND SILICATE FREE) EXTENDED LIFE COOLANT



Prepared for:
 Jeff Weber
 EAGLE MOUNTAIN CITY
 2565 N Pony Express Pkwy
 Eagle Mountain, UT 84005
 Phone: 801-789-6679

Prepared by:
 Skylar Dyreng
 PREMIER TRUCK GROUP
 2240 SOUTH 5370 WEST
 SALT LAKE CITY, UT 84120
 Phone:

Data Code	Description
171-007	GATES BLUE STRIPE COOLANT HOSES OR EQUIVALENT
172-001	CONSTANT TENSION HOSE CLAMPS FOR COOLANT HOSES
270-016	RADIATOR DRAIN VALVE
168-998	NO RADIATOR/OIL PAN GUARD
138-010	PHILLIPS-TEMRO 750 WATT/115 VOLT BLOCK HEATER
140-053	BLACK PLASTIC ENGINE HEATER RECEPTACLE MOUNTED UNDER LH DOOR
134-001	ALUMINUM FLYWHEEL HOUSING
132-004	ELECTRIC GRID AIR INTAKE WARMER
155-057	DELCO 12V 29MT STARTER WITH INTEGRATED MAGNETIC SWITCH

Transmission

342-1MN	ALLISON 2500 RDS AUTOMATIC TRANSMISSION WITH PTO PROVISION
---------	--

Transmission Equipment

343-301	ALLISON VOCATIONAL PACKAGE 354 - AVAILABLE ON 1000/2000 PRODUCT FAMILIES WITH VOCATIONAL MODELS RDS, EVS, HS, MH, PTS AND SPS
84B-012	ALLISON VOCATIONAL RATING FOR ON/OFF HIGHWAY APPLICATIONS AVAILABLE WITH ALL PRODUCT FAMILIES
84C-003	PRIMARY MODE GEARS, 5 FORWARD GEARS WITH MANUAL SELECTION FOR 3, 2 AND 1, AVAILABLE FOR 1000/2000 PRODUCT FAMILIES ONLY
84E-002	VARIABLE PRIMARY SHIFT SCHEDULE, AVAILABLE FOR 1000/2000 PRODUCT FAMILIES ONLY
84F-002	VARIABLE SECONDARY SHIFT SCHEDULE, AVAILABLE FOR 1000/2000 PRODUCT FAMILIES ONLY
84G-017	2500 RPM PRIMARY MODE SHIFT SPEED
84H-017	2500 RPM SECONDARY MODE SHIFT SPEED
84J-000	ENGINE BRAKE RANGE PRESELECT RECOMMENDED BY DTNA AND ALLISON, THIS DEFINED BY ENGINE AND VOCATIONAL USAGE
84K-000	ENGINE BRAKE RANGE ALTERNATE PRESELECT RECOMMENDED BY DTNA AND ALLISON, THIS DEFINED BY ENGINE AND VOCATIONAL USAGE



Prepared for:
 Jeff Weber
 EAGLE MOUNTAIN CITY
 2565 N Pony Express Pkwy
 Eagle Mountain, UT 84005
 Phone: 801-789-6679

Prepared by:
 Skylar Dyreng
 PREMIER TRUCK GROUP
 2240 SOUTH 5370 WEST
 SALT LAKE CITY, UT 84120
 Phone:

Data Code	Description
84N-200	FUEL SENSE 2.0 DISABLED - PERFORMANCE - TABLE BASED
84U-000	DRIVER SWITCH INPUT - DEFAULT - NO SWITCHES
34C-002	ELECTRONIC TRANSMISSION CUSTOMER ACCESS CONNECTOR MOUNTED BACK OF CAB
362-1BV	CUSTOMER INSTALLED CHELSEA 270 SERIES PTO
363-002	PTO MOUNTING, RH SIDE OF MAIN TRANSMISSION
341-018	MAGNETIC PLUGS, ENGINE DRAIN, TRANSMISSION DRAIN, AXLE(S) FILL AND DRAIN
345-072	DASH MOUNTED T-HANDLE CABLE SHIFT CONTROL WITHOUT PARK BRAKE POSITION
97G-006	TRANSMISSION PROGNOSTICS - DISABLED (N/A) 2013, FOR USE IN 1000/2000 ONLY
370-015	WATER TO OIL TRANSMISSION COOLER, IN RADIATOR END TANK
346-001	TRANSMISSION OIL CHECK AND FILL
35T-001	SYNTHETIC TRANSMISSION FLUID (TES-295 COMPLIANT)

Front Axle and Equipment

400-1A6	DETROIT DA-F-12.0-3 12,000# FF1 71.5 KPI/3.74 DROP SINGLE FRONT AXLE
402-020	MERITOR 15X4 Q+ CAM FRONT BRAKES
403-002	NON-ASBESTOS FRONT BRAKE LINING
419-001	CAST IRON OUTBOARD FRONT BRAKE DRUMS
409-006	FRONT OIL SEALS
408-001	VENTED FRONT HUB CAPS WITH WINDOW, CENTER AND SIDE PLUGS - OIL
416-022	STANDARD SPINDLE NUTS FOR ALL AXLES
405-002	MERITOR AUTOMATIC FRONT SLACK ADJUSTERS
536-050	TRW THP-60 POWER STEERING
539-003	POWER STEERING PUMP
534-015	2 QUART SEE THROUGH POWER STEERING RESERVOIR
40T-003	SYNTHETIC 40/50W FRONT AXLE LUBE

Front Suspension

620-1E9	12,000# MONO TAPERLEAF FRONT SUSPENSION
---------	---



Prepared for:
 Jeff Weber
 EAGLE MOUNTAIN CITY
 2565 N Pony Express Pkwy
 Eagle Mountain, UT 84005
 Phone: 801-789-6679

Prepared by:
 Skylar Dyreng
 PREMIER TRUCK GROUP
 2240 SOUTH 5370 WEST
 SALT LAKE CITY, UT 84120
 Phone:

Data Code	Description
619-005	MAINTENANCE FREE RUBBER BUSHINGS - FRONT SUSPENSION
410-001	FRONT SHOCK ABSORBERS

Rear Axle and Equipment

420-1C8	DETROIT DA-RS-21.0-4 21,000# R-SERIES SINGLE REAR AXLE
421-614	6.14 REAR AXLE RATIO
424-001	IRON REAR AXLE CARRIER WITH STANDARD AXLE HOUSING
386-073	MXL 17T MERITOR EXTENDED LUBE MAIN DRIVELINE WITH HALF ROUND YOKES
452-001	DRIVER CONTROLLED TRACTION DIFFERENTIAL - SINGLE REAR AXLE
878-018	(1) DRIVER CONTROLLED DIFFERENTIAL LOCK REAR VALVE FOR SINGLE DRIVE AXLE
87B-004	BLINKING LAMP WITH EACH MODE SWITCH, DIFFERENTIAL UNLOCK WITH IGNITION OFF, ACTIVE <5 MPH
423-020	MERITOR 16.5X7 Q+ CAST SPIDER CAM REAR BRAKES, DOUBLE ANCHOR, FABRICATED SHOES
433-002	NON-ASBESTOS REAR BRAKE LINING
434-012	BRAKE CAMS AND CHAMBERS ON REAR SIDE OF DRIVE AXLE(S)
451-001	CAST IRON OUTBOARD REAR BRAKE DRUMS
440-006	REAR OIL SEALS
426-100	WABCO TRISTOP D LONGSTROKE 1-DRIVE AXLE SPRING PARKING CHAMBERS
428-002	MERITOR AUTOMATIC REAR SLACK ADJUSTERS
41T-002	CURRENT AVAILABLE SYNTHETIC 75W-90 REAR AXLE LUBE

Rear Suspension

622-003	23,000# FLAT LEAF SPRING REAR SUSPENSION WITH HELPER AND RADIUS ROD
621-001	SPRING SUSPENSION - NO AXLE SPACERS
431-001	STANDARD AXLE SEATS IN AXLE CLAMP GROUP
623-005	FORE/AFT CONTROL RODS

Brake System

018-002	AIR BRAKE PACKAGE
490-101	WABCO 4S/4M ABS WITH TRACTION CONTROL, WITH ATC OFF-ROAD SWITCH



Prepared for:
 Jeff Weber
 EAGLE MOUNTAIN CITY
 2565 N Pony Express Pkwy
 Eagle Mountain, UT 84005
 Phone: 801-789-6679

Prepared by:
 Skylar Dyreng
 PREMIER TRUCK GROUP
 2240 SOUTH 5370 WEST
 SALT LAKE CITY, UT 84120
 Phone:

Data Code	Description
871-001	REINFORCED NYLON, FABRIC BRAID AND WIRE BRAID CHASSIS AIR LINES
904-001	FIBER BRAID PARKING BRAKE HOSE
412-001	STANDARD BRAKE SYSTEM VALVES
46D-002	STANDARD AIR SYSTEM PRESSURE PROTECTION SYSTEM
413-002	STD U.S. FRONT BRAKE VALVE
432-003	RELAY VALVE WITH 5-8 PSI CRACK PRESSURE, NO REAR PROPORTIONING VALVE
480-088	WABCO SYSTEM SAVER HP WITH INTEGRAL AIR GOVERNOR AND HEATER
479-015	AIR DRYER FRAME MOUNTED
460-001	STEEL AIR BRAKE RESERVOIRS
607-001	CLEAR FRAME RAILS FROM BACK OF CAB TO FRONT REAR SUSPENSION BRACKET, BOTH RAILS OUTBOARD
477-011	PETCOCK DRAIN VALVES ON ALL AIR TANK(S)

Trailer Connections

296-010	PRIMARY CONNECTOR/RECEPTACLE WIRED FOR SEPARATE STOP/TURN, ABS CENTER PIN POWERED THROUGH IGNITION
297-001	SAE J560 7-WAY PRIMARY TRAILER CABLE RECEPTACLE MOUNTED END OF FRAME
335-004	UPGRADED CHASSIS MULTIPLEXING UNIT
32A-002	UPGRADED BULKHEAD MULTIPLEXING UNIT

Wheelbase & Frame

545-380	3800MM (150 INCH) WHEELBASE
546-094	9/32X3-7/16X10-1/16 INCH STEEL FRAME (7.14MMX255.6/0.281X10.06 INCH) 80KSI
552-025	1375MM (54 INCH) REAR FRAME OVERHANG
55W-005	FRAME OVERHANG RANGE: 51 INCH TO 60 INCH
AC8-99D	CALC'D BACK OF CAB TO REAR SUSP C/L (CA) : 84.06 in
AE8-99D	CALCULATED EFFECTIVE BACK OF CAB TO REAR SUSPENSION C/L (CA) : 81.06 in
AE4-99D	CALC'D FRAME LENGTH - OVERALL : 242.68
FSS-0LH	CALCULATED FRAME SPACE LH SIDE : 49.34 in
FSS-0RH	CALCULATED FRAME SPACE RH SIDE : 112.01 in
AM6-99D	CALC'D SPACE AVAILABLE FOR DECKPLATE : 78.45 in



Prepared for:
 Jeff Weber
 EAGLE MOUNTAIN CITY
 2565 N Pony Express Pkwy
 Eagle Mountain, UT 84005
 Phone: 801-789-6679

Prepared by:
 Skylar Dyreng
 PREMIER TRUCK GROUP
 2240 SOUTH 5370 WEST
 SALT LAKE CITY, UT 84120
 Phone:

Data Code	Description
553-001	SQUARE END OF FRAME
587-003	REAR TOW HOOKS
550-001	FRONT CLOSING CROSSMEMBER
559-001	STANDARD WEIGHT ENGINE CROSSMEMBER
561-001	STANDARD CROSSMEMBER BACK OF TRANSMISSION
562-001	STANDARD MIDSHIP #1 CROSSMEMBER(S)
572-001	STANDARD REARMOST CROSSMEMBER
565-001	STANDARD SUSPENSION CROSSMEMBER

Chassis Equipment

556-1AP	THREE-PIECE 14 INCH PAINTED STEEL BUMPER WITH COLLAPSIBLE ENDS
558-001	FRONT TOW HOOKS - FRAME MOUNTED
574-001	BUMPER MOUNTING FOR SINGLE LICENSE PLATE
586-024	FENDER AND FRONT OF HOOD MOUNTED FRONT MUDFLAPS
551-002	HUCK-SPIN ROUND COLLAR CHASSIS FASTENERS

Fuel Tanks

204-215	50 GALLON/189 LITER SHORT RECTANGULAR ALUMINUM FUEL TANK - LH
218-005	RECTANGULAR FUEL TANK(S)
215-005	PLAIN ALUMINUM/PAINTED STEEL FUEL/HYDRAULIC TANK(S) WITH PAINTED BANDS
212-007	FUEL TANK(S) FORWARD
664-003	BLACK STEP FINISH
205-001	FUEL TANK CAP(S)
122-1J1	DETROIT FUEL/WATER SEPARATOR WITH WATER IN FUEL SENSOR, HAND PRIMER AND 12 VOLT PREHEATER"
216-020	EQUIFLO INBOARD FUEL SYSTEM
202-016	HIGH TEMPERATURE REINFORCED NYLON FUEL LINE

Tires

093-1RK	MICHELIN X WORKS Z 11R22.5 16 PLY RADIAL FRONT TIRES
094-2A7	MICHELIN XDS2 11R22.5 16 PLY RADIAL REAR TIRES

Hubs



Prepared for:
 Jeff Weber
 EAGLE MOUNTAIN CITY
 2565 N Pony Express Pkwy
 Eagle Mountain, UT 84005
 Phone: 801-789-6679

Prepared by:
 Skylar Dyreng
 PREMIER TRUCK GROUP
 2240 SOUTH 5370 WEST
 SALT LAKE CITY, UT 84120
 Phone:

Data Code	Description
418-060	CONMET PRESET PLUS PREMIUM IRON FRONT HUBS
450-060	CONMET PRESET PLUS PREMIUM IRON REAR HUBS

Wheels

502-693	ALCOA LVL ONE 88267X 22.5X8.25 10-HUB PILOT 5.80 INSET ALUMINUM DISC FRONT WHEELS
505-693	ALCOA LVL ONE 88267X 22.5X8.25 10-HUB PILOT ALUMINUM DISC REAR WHEELS
496-011	FRONT WHEEL MOUNTING NUTS
497-011	REAR WHEEL MOUNTING NUTS
495-998	NO PUSHER/TAG WHEEL MOUNTING NUTS

Cab Exterior

829-071	106 INCH BBC FLAT ROOF ALUMINUM CONVENTIONAL CAB
650-008	AIR CAB MOUNTING
648-002	NONREMOVABLE BUGSCREEN MOUNTED BEHIND GRILLE
678-018	LH AND RH EXTERIOR GRAB HANDLES WITH SINGLE RUBBER INSERT
646-045	MOLD-IN COLOR GRILLE
65X-011	MOLD-IN COLOR HOOD MOUNTED AIR INTAKE GRILLE
644-004	FIBERGLASS HOOD
690-002	TUNNEL/FIREWALL LINER
727-1AF	SINGLE 14 INCH ROUND HADLEY AIR HORN UNDER LH DECK
726-001	SINGLE ELECTRIC HORN
728-001	SINGLE HORN SHIELD
657-001	DOOR LOCKS AND IGNITION SWITCH KEYED THE SAME
78G-002	KEY QUANTITY OF 2
575-001	REAR LICENSE PLATE MOUNT END OF FRAME
312-089	LED HEADLIGHT ASSEMBLY AND INCANDESCENT MARKER/TURN LAMP
302-047	LED AERODYNAMIC MARKER LIGHTS
311-001	DAYTIME RUNNING LIGHTS
294-1AY	INTEGRAL LED STOP/TAIL/BACKUP LIGHTS
300-015	STANDARD FRONT TURN SIGNAL LAMPS
744-1BC	DUAL WEST COAST BRIGHT FINISH HEATED MIRRORS WITH LH AND RH REMOTE



Prepared for:
 Jeff Weber
 EAGLE MOUNTAIN CITY
 2565 N Pony Express Pkwy
 Eagle Mountain, UT 84005
 Phone: 801-789-6679

Prepared by:
 Skylar Dyreng
 PREMIER TRUCK GROUP
 2240 SOUTH 5370 WEST
 SALT LAKE CITY, UT 84120
 Phone:

Data Code	Description
797-001	DOOR MOUNTED MIRRORS
796-001	102 INCH EQUIPMENT WIDTH
743-204	LH AND RH 8 INCH BRIGHT FINISH CONVEX MIRRORS MOUNTED UNDER PRIMARY MIRRORS
74A-001	RH DOWN VIEW MIRROR
729-001	STANDARD SIDE/REAR REFLECTORS
677-054	RH AFTERTREATMENT SYSTEM CAB ACCESS WITH PLAIN DIAMOND PLATE COVER
764-010	COMPOSITE EXTERIOR SUN VISOR
768-043	63X14 INCH TINTED REAR WINDOW
661-003	TINTED DOOR GLASS LH AND RH WITH TINTED NON-OPERATING WING WINDOWS
654-027	RH AND LH ELECTRIC POWERED WINDOWS, PASSENGER SWITCHES ON DOOR(S)
769-002	LOWER RH DOOR WINDOW WITH FRESNEL LENS
663-013	1-PIECE SOLAR GREEN GLASS WINDSHIELD
659-020	2 GALLON WINDSHIELD WASHER RESERVOIR WITH FLUID LEVEL INDICATOR, FRAME MOUNTED

Cab Interior

707-1AM	OPAL GRAY CLOTH INTERIOR
706-016	MOLDED DOOR PANEL WITH UPPER VINYL INSERTS
708-016	MOLDED DOOR PANEL WITH UPPER VINYL INSERTS
772-006	BLACK MATS WITH SINGLE INSULATION
785-004	DASH MOUNTED ASH TRAY(S) WITHOUT LIGHTER
691-008	FORWARD ROOF MOUNTED CONSOLE WITH UPPER STORAGE COMPARTMENTS WITHOUT NETTING
694-010	IN DASH STORAGE BIN
696-012	CENTER STORAGE CONSOLE MOUNTED ON BACKWALL
693-003	PLASTIC MANIFEST BOX - LH DOOR
742-007	(2) CUP HOLDERS LH AND RH DASH
680-006	GRAY/CHARCOAL FLAT DASH
860-004	SMART SWITCH EXPANSION MODULE
720-002	2-1/2 LB. FIRE EXTINGUISHER
700-002	HEATER, DEFROSTER AND AIR CONDITIONER



Prepared for:
 Jeff Weber
 EAGLE MOUNTAIN CITY
 2565 N Pony Express Pkwy
 Eagle Mountain, UT 84005
 Phone: 801-789-6679

Prepared by:
 Skylar Dyreng
 PREMIER TRUCK GROUP
 2240 SOUTH 5370 WEST
 SALT LAKE CITY, UT 84120
 Phone:

Data Code	Description
701-008	STANDARD HVAC DUCTING WITH SNOW SHIELD FOR FRESH AIR INTAKE
703-005	MAIN HVAC CONTROLS WITH RECIRCULATION SWITCH
170-015	STANDARD HEATER PLUMBING
130-041	VALEO HEAVY DUTY A/C REFRIGERANT COMPRESSOR
702-002	BINARY CONTROL, R-134A
739-034	PREMIUM INSULATION
285-013	SOLID-STATE CIRCUIT PROTECTION AND FUSES
280-007	12V NEGATIVE GROUND ELECTRICAL SYSTEM
324-011	DOMED DOOR ACTIVATED LH AND RH, DUAL READING LIGHTS, FORWARD CAB ROOF
655-005	LH AND RH ELECTRIC DOOR LOCKS
284-101	(1) 12V POWER SUPPLY (1) DUAL 2.1 AMP USB CHARGER IN DASH
722-002	TRIANGULAR REFLECTORS WITHOUT FLARES
756-339	PREMIUM ISRINGHAUSEN HIGH BACK AIR SUSPENSION DRIVERS SEAT WITH 2 AIR LUMBAR, INTEGRATED CUSHION EXTENSION, TILT AND ADJUSTABLE SHOCK
760-337	BASIC ISRINGHAUSEN HIGH BACK NON SUSPENSION TOOL BOX PASSENGER SEAT
759-007	DUAL DRIVER SEAT ARMRESTS, NO PASSENGER SEAT ARMRESTS
711-004	LH AND RH INTEGRAL DOOR PANEL ARMRESTS
758-036	VINYL WITH VINYL INSERT DRIVER SEAT
761-036	VINYL WITH VINYL INSERT PASSENGER SEAT
763-101	BLACK SEAT BELTS
532-002	ADJUSTABLE TILT AND TELESCOPING STEERING COLUMN
540-016	18 INCH (450MM) LEATHER WRAPPED STEERING WHEEL
765-002	DRIVER AND PASSENGER INTERIOR SUN VISORS

Instruments & Controls

732-003	WOODGRAIN DRIVER INSTRUMENT PANEL
734-003	WOODGRAIN CENTER INSTRUMENT PANEL
870-001	BLACK GAUGE BEZELS
486-001	LOW AIR PRESSURE INDICATOR LIGHT AND AUDIBLE ALARM



Prepared for:
 Jeff Weber
 EAGLE MOUNTAIN CITY
 2565 N Pony Express Pkwy
 Eagle Mountain, UT 84005
 Phone: 801-789-6679

Prepared by:
 Skylar Dyreng
 PREMIER TRUCK GROUP
 2240 SOUTH 5370 WEST
 SALT LAKE CITY, UT 84120
 Phone:

Data Code	Description
840-002	2 INCH PRIMARY AND SECONDARY AIR PRESSURE GAUGES
198-003	DASH MOUNTED AIR RESTRICTION INDICATOR WITH GRADUATIONS
149-017	ELECTRONIC CRUISE CONTROL WITH SWITCHES ON AUXILIARY GAUGE PANEL (B DASH PANEL)
156-007	KEY OPERATED IGNITION SWITCH AND INTEGRAL START POSITION; 4 POSITION OFF/RUN/START/ACCESSORY
811-042	ICU3S, 132X48 DISPLAY WITH DIAGNOSTICS, 28 LED WARNING LAMPS AND DATA LINKED
160-038	HEAVY DUTY ONBOARD DIAGNOSTICS INTERFACE CONNECTOR LOCATED BELOW LH DASH
844-001	2 INCH ELECTRIC FUEL GAUGE
148-003	PROGRAMMABLE RPM CONTROL - ELECTRONIC ENGINE
856-001	ELECTRICAL ENGINE COOLANT TEMPERATURE GAUGE
864-001	2 INCH TRANSMISSION OIL TEMPERATURE GAUGE
830-017	ENGINE AND TRIP HOUR METERS INTEGRAL WITHIN DRIVER DISPLAY
372-035	(1) DASH MOUNTED PTO SWITCH WITH INDICATOR LAMP
852-002	ELECTRIC ENGINE OIL PRESSURE GAUGE
679-001	OVERHEAD INSTRUMENT PANEL
746-137	AM/FM/WB WORLD TUNER RADIO WITH BLUETOOTH, USB AND AUXILIARY INPUTS, J1939
747-001	DASH MOUNTED RADIO
750-002	(2) RADIO SPEAKERS IN CAB
748-014	COBRA 29NW LTD CLASSIC FACTORY INSTALLED CB RADIO
749-001	ROOF/OVERHEAD CONSOLE CB RADIO PROVISION
752-017	MULTI-BAND AM/FM/WB/CB LH MIRROR MOUNTED ANTENNA SYSTEM
810-027	ELECTRONIC MPH SPEEDOMETER WITH SECONDARY KPH SCALE, WITHOUT ODOMETER
817-001	STANDARD VEHICLE SPEED SENSOR
812-001	ELECTRONIC 3000 RPM TACHOMETER
162-011	IDLE LIMITER, ELECTRONIC ENGINE



Prepared for:
 Jeff Weber
 EAGLE MOUNTAIN CITY
 2565 N Pony Express Pkwy
 Eagle Mountain, UT 84005
 Phone: 801-789-6679

Prepared by:
 Skylar Dyreng
 PREMIER TRUCK GROUP
 2240 SOUTH 5370 WEST
 SALT LAKE CITY, UT 84120
 Phone:

Data Code	Description
329-010	TWO ON/OFF ROCKER SWITCHES IN THE DASH WITH INDICATOR LIGHTS AND WIRE ROUTED TO CHASSIS AT BACK OF CAB, LABEL OPT
81Y-001	PRE-TRIP LAMP INSPECTION, ALL OUTPUTS FLASH, WITH SMART SWITCH
836-015	DIGITAL VOLTAGE DISPLAY INTEGRAL WITH DRIVER DISPLAY
660-001	SINGLE ELECTRIC WINDSHIELD WIPER MOTOR WITH DELAY AND ARCTIC TYPE BLADES
304-001	MARKER LIGHT SWITCH INTEGRAL WITH HEADLIGHT SWITCH
882-009	ONE VALVE PARKING BRAKE SYSTEM WITH WARNING INDICATOR
299-013	SELF CANCELING TURN SIGNAL SWITCH WITH DIMMER, WASHER/WIPER AND HAZARD IN HANDLE
298-039	INTEGRAL ELECTRONIC TURN SIGNAL FLASHER WITH HAZARD LAMPS OVERRIDING STOP LAMPS

Design

065-000	PAINT: ONE SOLID COLOR
---------	------------------------

Color

980-5F6	CAB COLOR A: L0006EY WHITE ELITE EY
986-020	BLACK, HIGH SOLIDS POLYURETHANE CHASSIS PAINT
964-3A1	BUMPER PAINT: N0001EA BLACK ELITE SS
976-995	SUNVISOR PAINTED SAME AS CAB COLOR A
963-003	STANDARD E COAT/UNDERCOATING

Certification / Compliance

996-001	U.S. FMVSS CERTIFICATION, EXCEPT SALES CABS AND GLIDER KITS
---------	---

Secondary Factory Options

998-032	CORPORATE PDI CENTER OPTION INSTALLATION/MODIFICATION ONLY
---------	---

Raw Performance Data

AE8-99D	CALCULATED EFFECTIVE BACK OF CAB TO REAR SUSPENSION C/L (CA) : 81.06 in
AM6-99D	CALC'D SPACE AVAILABLE FOR DECKPLATE : 78.45 in

Prepared for:
Jeff Weber
EAGLE MOUNTAIN CITY
2565 N Pony Express Pkwy
Eagle Mountain, UT 84005
Phone: 801-789-6679

Prepared by:
Skylar Dyreng
PREMIER TRUCK GROUP
2240 SOUTH 5370 WEST
SALT LAKE CITY, UT 84120
Phone:

Extended Warranty

WAG-010 TOWING: 1 YEAR/UNLIMITED MILES/KM EXTENDED TOWING
COVERAGE \$550 CAP FEX APPLIES

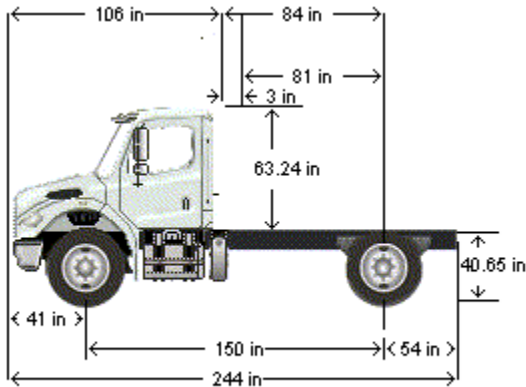
(***) All cost increases for major components (Engines, Transmissions, Axles, Front and Rear Tires) and government mandated requirements, tariffs, and raw material surcharges will be passed through and added to factory invoices.



Prepared for:
 Jeff Weber
 EAGLE MOUNTAIN CITY
 2565 N Pony Express Pkwy
 Eagle Mountain, UT 84005
 Phone: 801-789-6679

Prepared by:
 Skylar Dyreng
 PREMIER TRUCK GROUP
 2240 SOUTH 5370 WEST
 SALT LAKE CITY, UT 84120
 Phone:

D I M E N S I O N S



VEHICLE SPECIFICATIONS SUMMARY - DIMENSIONS

Model	M2106
Wheelbase (545)	3800MM (150 INCH) WHEELBASE
Rear Frame Overhang (552)	1375MM (54 INCH) REAR FRAME OVERHANG
Fifth Wheel (578)	NO FIFTH WHEEL
Mounting Location (577)	NO FIFTH WHEEL LOCATION
Maximum Forward Position (in)	0
Maximum Rearward Position (in)	0
Amount of Slide Travel (in)	0
Slide Increment (in)	0
Desired Slide Position (in)	0.0
Cab Size (829)	106 INCH BBC FLAT ROOF ALUMINUM CONVENTIONAL CAB
Sleeper (682)	NO SLEEPER BOX/SLEEPER CAB
Exhaust System (016)	RH OUTBOARD UNDER STEP MOUNTED HORIZONTAL AFTERTREATMENT SYSTEM ASSEMBLY WITH RH HORIZONTAL TAILPIPE

TABLE SUMMARY - DIMENSIONS



Prepared for:
 Jeff Weber
 EAGLE MOUNTAIN CITY
 2565 N Pony Express Pkwy
 Eagle Mountain, UT 84005
 Phone: 801-789-6679

Prepared by:
 Skylar Dyreng
 PREMIER TRUCK GROUP
 2240 SOUTH 5370 WEST
 SALT LAKE CITY, UT 84120
 Phone:

Dimensions	Inches
Bumper to Back of Cab (BBC)	106.3
Bumper to Centerline of Front Axle (BA)	40.7
Min. Cab to Body Clearance (CB)	3.0
Back of Cab to Centerline of Rear Axle(s) (CA)	84.1
Effective Back of Cab to Centerline of Rear Axle(s) (Effective CA)	81.1
Back of Cab Protrusions (Exhaust/Intake) (CP)	2.0
Back of Cab Protrusions (Side Extenders/Trim Tab) (CP)	0.0
Back of Cab Protrusions (CNG Tank)	0.0
Back of Cab Clearance (CL)	3.0
Back of Cab to End of Frame	138.2
Cab Height (CH)	63.2
Wheelbase (WB)	149.6
Frame Overhang (OH)	54.1
Overall Frame Length	242.7
Overall Length (OAL)	244.5
Rear Axle Spacing	0.0
Unladen Frame Height at Centerline of Rear Axle	40.6

Performance calculations are estimates only. If performance calculations are critical, please contact Customer Application Engineering.



Prepared for:
 Jeff Weber
 EAGLE MOUNTAIN CITY
 2565 N Pony Express Pkwy
 Eagle Mountain, UT 84005
 Phone: 801-789-6679

Prepared by:
 Skylar Dyreng
 PREMIER TRUCK GROUP
 2240 SOUTH 5370 WEST
 SALT LAKE CITY, UT 84120
 Phone:

Q U O T A T I O N

M2 106 CONVENTIONAL CHASSIS

SET BACK AXLE - TRUCK
 CUM B6.7 300 HP @ 2600 RPM, 2600 GOV, 660 LB-FT @
 1600 RPM
 ALLISON 2500 RDS AUTOMATIC TRANSMISSION WITH
 PTO PROVISION
 DETROIT DA-RS-21.0-4 21,000# R-SERIES SINGLE REAR
 AXLE
 23,000# FLAT LEAF SPRING REAR SUSPENSION WITH
 HELPER AND RADIUS ROD

DETROIT DA-F-12.0-3 12,000# FF1 71.5 KPI/3.74 DROP
 SINGLE FRONT AXLE
 12,000# MONO TAPERLEAF FRONT SUSPENSION
 106 INCH BBC FLAT ROOF ALUMINUM CONVENTIONAL
 CAB
 3800MM (150 INCH) WHEELBASE
 9/32X3-7/16X10-1/16 INCH STEEL FRAME
 (7.14MMX255.6/0.281X10.06 INCH) 80KSI
 1375MM (54 INCH) REAR FRAME OVERHANG

		PER UNIT		TOTAL
VEHICLE PRICE	TOTAL # OF UNITS (2)	\$ 71,824	\$	143,648
EXTENDED WARRANTY		\$ 200	\$	400
DEALER INSTALLED OPTIONS		\$ 0	\$	0
CUSTOMER PRICE BEFORE TAX		\$ 72,024	\$	144,048

TAXES AND FEES

FEDERAL EXCISE TAX (FET)	\$ (176)	\$	(353)
TAXES AND FEES	\$ 0	\$	0
OTHER CHARGES	\$ 0	\$	0

TRADE-IN

TRADE-IN ALLOWANCE	\$ (0)	\$	(0)
---------------------------	--------	----	-----

BALANCE DUE	(LOCAL CURRENCY)	\$ 71,848	\$	143,695
--------------------	-------------------------	------------------	-----------	----------------

APPROVAL:

Please indicate your acceptance of this quotation by signing below:

Customer: X _____ Date: ___ / ___ / ___.

Daimler Truck Financial

Financing that works for you.

See your local dealer for a competitive quote from Daimler Truck Financial, or contact us at Information@dtfoffers.com.

Daimler Truck Financial offers a variety of finance, lease and insurance solutions to fit your business needs. For more information about our products and services, visit our website at www.daimler-truckfinancial.com.





**EAGLE MOUNTAIN CITY
CITY COUNCIL MEETING
AUGUST 24, 2021**

TITLE:	Two 2022 Ford F-350 Trucks - Ken Garff Ford (State Contract)		
ITEM TYPE:	Bid Award		
FISCAL IMPACT:	\$88,185.90 in the Fleet Fund, GL 54-45-54000-7421		
APPLICANT:			
GENERAL PLAN DESIGNATION	CURRENT ZONE	ACREAGE	COMMUNITY

PUBLIC HEARING:

No

PREPARED BY:

Jeff Weber, Admin

PRESENTED BY:

Jeff Weber,
Facilities/Operations Director

RECOMMENDATION:

Staff recommends the City Council approve the purchase of two 2022 Ford F-350 trucks from Ken Garff Ford in the amount of \$88,185.90.

BACKGROUND:

The two new vehicles will replace trucks 75 and 77 in the Water Department. The vehicles are being purchased on a State contract and the purchase is included in the FY 2022 budget.

ITEMS FOR CONSIDERATION:

REQUIRED FINDINGS:

PLANNING COMMISSION ACTION/RECOMMENDATION:

ATTACHMENTS:

[Quote - Ken Garff Ford](#)

CNGP530

VEHICLE ORDER CONFIRMATION

06/17/21 14:58:34

Dealer: F56557

Page: 1 of 2

Order No: Q001 Priority: A1 Ord FIN: QS050 Order Type: 5B Price Level: 230
Ord PEP: 640A Cust/Flt Name: EG PO Number:

		RETAIL		RETAIL
*W3H	F350 4X4 CRW CC	\$43700		FLEET SPCL ADJ NC
	179" WHEELBASE			FRT LICENSE BKT NC
Z1	OXFORD WHITE		18B	PLAT RUNNING BD 445
1	CLTH 40/20/40	315		14000# GVWR PKG
S	MEDIUM EARTH GR		425	50 STATE EMISS NC
640A	PREF EQUIP PKG			JOB #1 BUILD
	.XL TRIM		512	SPARE TIRE/WHL2 350
572	.DUAL ZONE EATC	NC	52B	BRAKE CONTROLLR 270
	.AMFM/MP3/CLK			
*99T	6.7L V8 DIESEL	10250		TOTAL BASE AND OPTIONS 58310
44G	10-SPD AUTOMATC	NC		TOTAL 58310
TD8	.LT245 BSW AS 17	NC		*THIS IS NOT AN INVOICE*
X37	3.73 REG AXLE	NC		
90L	PWR EQUIP GROUP	1125		* MORE ORDER INFO NEXT PAGE *
	TELE TT MIR-PWR			F8=Next

F1=Help F2=Return to Order F3/F12=Veh Ord Menu
F4=Submit F5=Add to Library

S006 - MORE DATA IS AVAILABLE.

QC08254

2022 Ford F350 CC CREWCAB DW

V1DP0760

2,6

6.7 DIESEL

MSRP \$58310
 State Rebate \$14327
 State Fee \$109.95
 Fuel _____
 Other _____
 Quote \$44092.95
 Customer Gask Mt.

Ken Garff
Ford American Fork

Phone: 801-783-6800
Cell: 801-362-1261
Fax: 801-783-6895
jime@kengarff.com

JIM ELLIOTT
COMMERCIAL FLEET MANAGER

597 East 1000 South
American Fork, UT 84003
www.kengarfford.com

CNGP530 VEHICLE ORDER CONFIRMATION 06/17/21 14:58:31
==> Dealer: F56557

2022 F-SERIES SD

Page: 2 of 2

Order No: Q001 Priority: A1 Ord FIN: QS050 Order Type: 5B Price Level: 230
Ord PEP: 640A Cust/Flt Name: EG PO Number:

RETAIL

RETAIL

61J JACK NC
62R TRANS PTO PROV NC
63A UTLTY LIGHT SYS 160
65Z AFT AXLE TANK NC
SP DLR ACCT ADJ
SP FLT ACCT CR
FUEL CHARGE
B4A NET INV FLT OPT NC
DEST AND DELIV 1695

TOTAL BASE AND OPTIONS 58310

TOTAL 58310

THIS IS NOT AN INVOICE

F7=Prev

F3/F12=Veh Ord Menu

F1=Help F2=Return to Order

F4=Submit F5=Add to Library

S099 - PRESS F4 TO SUBMIT

QC08254

V1DP0760

2,6



Engineering Division
2565 North Pony Express Parkway
Eagle Mountain City, Utah 84005
(801) 789-6671

Wednesday, August 11, 2021

City Recorder's Office
Eagle Mountain City
1650 East Stage Coach Run
Eagle Mountain City, UT 84005

SUBJECT: Arrival phase "B" plat 4 out of warranty Bond Release

City Recorder:

The above referenced subdivision has completed the required one-year maintenance period as required in their development agreement. After performing a walkthrough of this subdivision, I would recommend that the city accepts the subdivision as complete and release all bonds placed by the developer and held by the city for this development.

Please contact me should you have any comments, questions, or concerns. Thank you.

Sincerely,

Chris Trusty

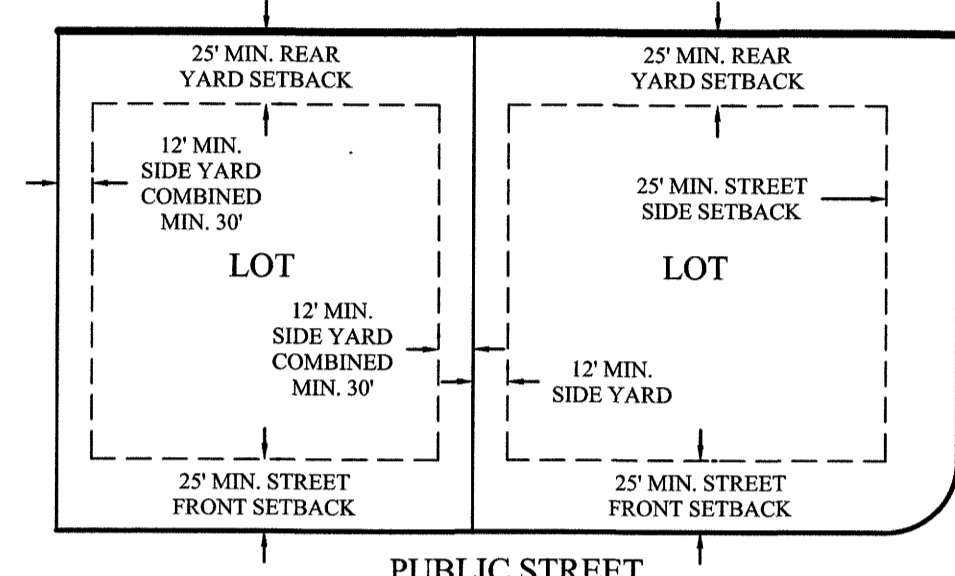
Chris Trusty (Aug 11, 2021 12:30 MDT)

Christopher T. Trusty, P.E.
Engineering Director
Eagle Mountain City

Cc: Fionnuala Kofoed, City Recorder



LINE	DIRECTION	LENGTH
(L1)	N33°48'03"W	18.17
(L2)	N59°31'15"W	44.62
(L3)	N42°47'06"W	68.04
(L4)	N28°35'27"W	169.32
(L5)	N76°59'56"W	89.88
(L6)	N25°07'05"W	22.03
(L7)	N57°30'27"E	100.05
(L9)	N57°30'27"E	84.84



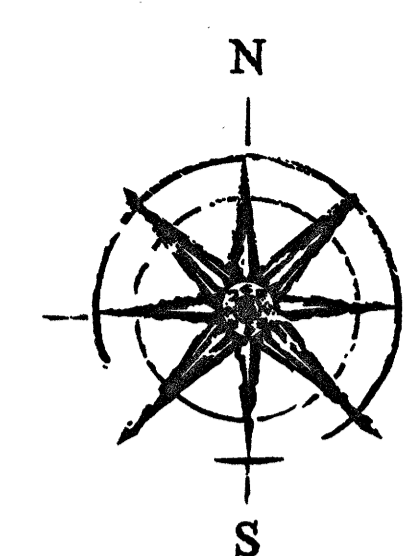
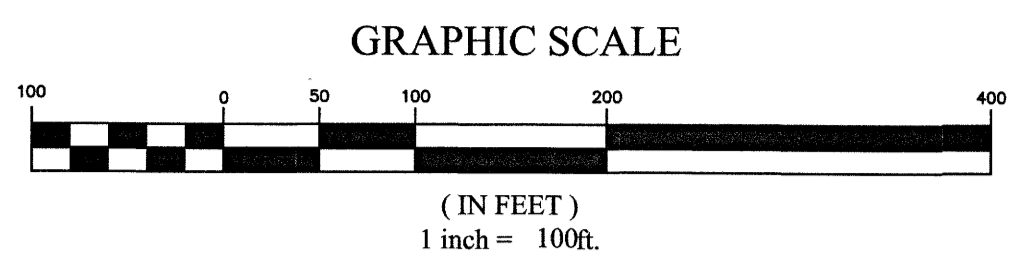
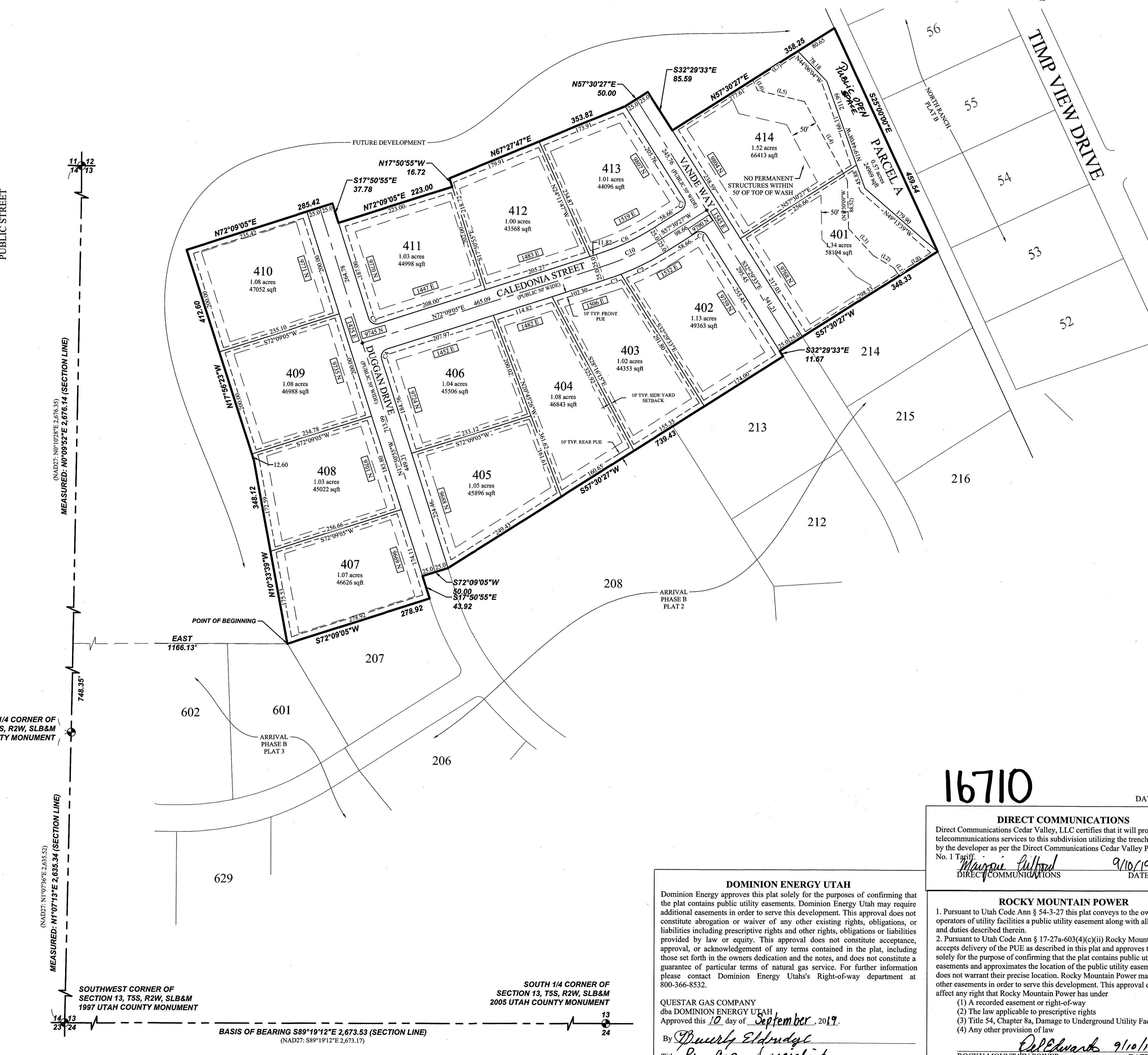
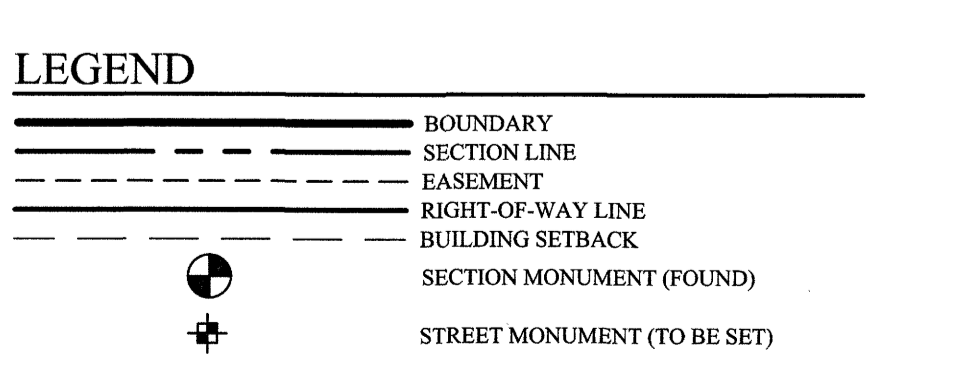
TYPICAL BUILDING SETBACKS
N.T.S.

CURVE	RADIUS	DELTA	LENGTH	CHORD DIRECTION	CHORD LENGTH
C1	15.00	90°00'00"	23.56	N77°29'33"W	21.21
C2	525.00	1°10'06"	100.96	S63°01'00"W	100.81
C3	525.00	3°37'31"	33.22	S70°20'19"W	33.21
C4	15.00	90°00'00"	23.56	S27°09'05"W	21.21
C5	15.00	90°00'00"	23.56	S62°50'55"E	21.21
C6	475.00	14°38'38"	121.40	N64°49'46"E	121.07
C7	15.00	90°00'00"	23.56	N12°30'27"E	21.21
C10	500.00	14°38'38"	127.79	N64°49'46"E	127.44

PLAT CALCULATIONS	
TOTAL ACREAGE:	18.25± ACRES
TOTAL ACREAGE IN LOTS:	15.48± ACRES
TOTAL ACREAGE IN ROW:	2.18± ACRES
TOTAL OPEN SPACE:	0.57± ACRES
TOTAL IMPROVED OPEN SPACE:	0.00± ACRES
AVERAGE LOT SIZE:	1.11± ACRES
LARGEST LOT SIZE:	1.52± ACRES
SMALLEST LOT SIZE:	1.00± ACRES
OVERALL DENSITY:	0.77 LOTS/ACRE
TOTAL # OF LOTS:	14 LOTS

NOTES:

- STREET MONUMENT TO BE SET
- REBAR AND CAP (FOCUS ENG) TO BE SET AT ALL LOT CORNERS. LEAD PLUGS TO BE SET IN THE TOP BACK OF CURB ON THE PROJECTION OF SIDE LOT LINES.
- P.U. & D.E. - PUBLIC UTILITY & DRAINAGE EASEMENT
- ALL LOTS MUST RECEIVE APPROVAL FROM THE UTAH COUNTY HEALTH DEPARTMENT FOR A SEPTIC TANK AND DRAIN FIELD PRIOR TO ISSUANCE OF BUILDING PERMITS. FAILURE TO MEET COUNTY REQUIREMENTS MAY RESULT IN LOTS BEING UNBUILDABLE. ANY LOT WITHIN 300 FEET OF AN EXISTING OR FUTURE SEWER MAY BE REQUIRED TO CONNECT TO THE SEWER LINE AT OWNER'S EXPENSE.
- PARCEL A IS HEREBY DEDICATED TO EAGLE MOUNTAIN CITY.



WEST 1/4 CORNER OF SECTION 13, T5S, R2W, SLB&M 1959 UTAH COUNTY MONUMENT

SOUTHWEST CORNER OF SECTION 13, T5S, R2W, SLB&M 1997 UTAH COUNTY MONUMENT

SOUTH 1/4 CORNER OF SECTION 13, T5S, R2W, SLB&M 2005 UTAH COUNTY MONUMENT

BASIS OF BEARING S89°19'12"E 2,673.53 (SECTION LINE)
(NAD27: S89°19'12"E 2,673.17)

SURVEYOR'S CERTIFICATE

I, Spencer W. Llewellyn, do hereby certify that I am a Professional Land Surveyor, and that I hold Certificate No. 10516507 in accordance with Title 58, Chapter 22 of Utah State Code. I further certify by authority of the owners(s) that I have completed a Survey of the property described on this Plat in accordance with Section 17-23-17 of said Code, and have subdivided said tract of land into lots, blocks, streets, and easements, and the same has, or will be correctly surveyed, staked and monumented on the ground as shown on this Plat, and that this Plat is true and correct.

Spencer W. Llewellyn
Professional Land Surveyor
Certificate No. 10516507

09/08/19
Date

BOUNDARY DESCRIPTION

A portion of the NW1/4 of Section 13, Township 5 South, Range 2 West, Salt Lake Base & Meridian, Eagle Mountain, Utah, more particularly described as follows:

Beginning at a point located N00°09'52"E along the Section line 748.35 feet and East 1,166.13 feet from the West 1/4 Corner of Section 13, T5S, R2W, SLB&M, said corner located N01°07'13"E 2,635.33 feet from the Southwest Corner of said Section 13 (Basis of Bearing: S89°19'12"E along the Section line from the Southwest Corner to the South 1/4 Corner of Section 13, T5S, R2W, SLB&M); thence N10°33'39"W 348.12 feet; thence N17°56'23"W 412.60 feet; thence N72°09'05"E 285.42 feet; thence S17°50'55"E 37.78 feet; thence N72°09'05"E 223.00 feet; thence N17°50'55"W 16.72 feet; thence N67°27'47"E 353.82 feet; thence N57°30'27"E 50.00 feet; thence S32°29'33"E 85.59 feet; thence N57°30'27"E 358.25 feet to the Westerly line of Plat "B", NORTH RANCH, according to the Official Plat thereof recorded May 12, 1998 as Entry No. 46922:1998 in the Office of the Utah County Recorder; thence S25°00'00"E along said plat 459.54 feet to the Northeast Corner of Lot 214, PHASE "B" PLAT 2, ARRIVAL SUBDIVISION, according to the Official Plat thereof recorded May 17, 2018 as Entry No. 46424:2018 in the Office of the Utah County Recorder; thence along said plat the following 6 (six) courses and distances: 1) S57°30'27"W 348.33 feet; 2) S32°29'33"E 11.67 feet; 3) S57°30'27"W 739.43 feet; 4) S72°09'05"W 50.00 feet; 5) S17°50'55"E 43.92 feet; 6) S72°09'05"W 278.92 feet to the point of beginning.

Contains: 18.25 acres±

ENT 92986:2019 Map 4 16710
JEFFERY SMITH
UTAH COUNTY RECORDER
2019 Sep 19 11:40 AM FEE \$20.00 BY SH
RECORDED FOR EAGLE MOUNTAIN CITY

OWNER'S DEDICATION

WE, THE UNDERSIGNED OWNERS OF ALL THE REAL PROPERTY DEPICTED ON THIS PLAT AND DESCRIBED IN THE SURVEYORS CERTIFICATE ON THIS PLAT, HAVE CAUSED THE LAND DESCRIBED ON THIS PLAT TO BE DIVIDED INTO LOTS, STREETS, PARKS, OPEN SPACES, EASEMENTS AND OTHER PUBLIC USES AS DESIGNATED ON THE PLAT AND NOW DO HEREBY DEDICATE UNDER THE PROVISIONS OF 10-9A-607, UTAH CODE, WITHOUT CONDITION, RESTRICTION OR RESERVATION TO EAGLE MOUNTAIN CITY, UTAH, ALL STREETS, WATER, SEWER AND OTHER UTILITY EASEMENTS AND IMPROVEMENTS, OPEN SPACES SHOWN AS PUBLIC OPEN SPACES, PARKS AND ALL OTHER PLACES OF PUBLIC USE AND ENJOYMENT TO EAGLE MOUNTAIN CITY, UTAH TOGETHER WITH ALL IMPROVEMENTS REQUIRED BY THE DEVELOPMENT AGREEMENT BETWEEN THE UNDERSIGNED AND EAGLE MOUNTAIN CITY FOR THE BENEFIT OF THE CITY AND THE INHABITANTS THEREOF.

OWNER(S):
PRINTED NAME OF OWNER: Belle Street Partners, LLC
AUTHORIZED SIGNATURE(S): [Signature]

ACKNOWLEDGMENT

ON THE 11th DAY OF September, 2019, PERSONALLY APPEARED BEFORE ME THE PERSONS SIGNING THE FOREGOING OWNERS DEDICATION KNOWN TO ME TO BE AUTHORIZED TO EXECUTE THE FOREGOING OWNERS DEDICATION FOR AND ON BEHALF OF THE OWNERS WHO DULY ACKNOWLEDGE TO ME THAT THE OWNERS DEDICATION WAS EXECUTED BY THEM ON BEHALF OF THE OWNERS.

MY COMMISSION EXPIRES April 25, 2023
Melanie A. Lehman
A NOTARY PUBLIC COMMISSIONED IN UTAH

705978
COMMISSION NUMBER
Melanie A. Lehman
PRINTED FULL NAME OF NOTARY

LIMITED LIABILITY ACKNOWLEDGMENT

STATE OF UTAH
COUNTY OF UTAH

ON THE 11th DAY OF September, A.D. 2019, PERSONALLY APPEARED BEFORE ME, THE UNDERSIGNED NOTARY PUBLIC, IN AND FOR THE COUNTY OF UTAH, IN SAID STATE OF UTAH, Scot J. Hartzard, WHO AFTER BEING DULY SWORN, ACKNOWLEDGED TO ME THAT HE IS THE MANAGER OF BELLE STREET PARTNERS, LLC, AND THAT HE SIGNED THE OWNERS DEDICATION FREELY AND VOLUNTARILY FOR AND IN BEHALF OF SAID LIMITED LIABILITY COMPANY FOR THE PURPOSES THEREIN MENTIONED.

MY COMMISSION EXPIRES APRIL 25, 2023
Melanie A. Lehman
A NOTARY PUBLIC COMMISSIONED IN UTAH

Eagle Mountain UT 84005
NOTARY ADDRESS
Melanie A. Lehman
PRINTED FULL NAME OF NOTARY

ACCEPTANCE BY LEGISLATIVE BODY

THE CITY COUNCIL OF EAGLE MOUNTAIN CITY, COUNTY OF UTAH, APPROVES THIS SUBDIVISION AND HEREBY ACCEPTS THE DEDICATION OF ALL STREETS, EASEMENTS, AND OTHER PARCELS OF LAND INTENDED FOR PUBLIC PURPOSES FOR THE PERPETUAL USE OF THE PUBLIC THIS 11th DAY OF September, 2019.

APPROVED BY MAYOR: [Signature]
APPROVED BY CITY ATTORNEY: [Signature]

APPROVED BY CITY ENGINEER (SEE SEAL BELOW): [Signature]
ATTEST BY CITY RECORDER (SEE SEAL BELOW): [Signature]

**PHASE "B" PLAT 4
ARRIVAL
SUBDIVISION**
EAGLE MOUNTAIN CITY, UTAH COUNTY, UTAH

SCALE: 1"=100'

SURVEYOR'S SEAL	NOTARY PUBLIC SEAL	CITY-COUNTY ENGINEER SEAL	COUNTY RECORDER SEAL
[Seal]	[Seal]	[Seal]	[Seal]

DOMINION ENERGY UTAH

Dominion Energy approves this plat solely for the purposes of confirming that the plat contains public utility easements. Dominion Energy Utah may require additional easements in order to serve this development. This approval does not constitute abrogation or waiver of any other existing rights, obligations, or liabilities including prescriptive rights and other rights, obligations or liabilities provided by law or equity. This approval does not constitute acceptance, approval, or acknowledgment of any terms contained in the plat, including those set forth in the owners dedication and the notes, and does not constitute a guarantee of particular terms of natural gas service. For further information please contact Dominion Energy Utah's Right-of-way department at 800-366-8532.

QUESTAR GAS COMPANY
dba DOMINION ENERGY UTAH
Approved this 10th day of September, 2019.

By: [Signature]
Title: Div. Con. Specialist

16710

DATE: 09/05/19

DIRECT COMMUNICATIONS

Direct Communications Cedar Valley, LLC certifies that it will provide telecommunications services to this subdivision utilizing the trenches provided by the developer as per the Direct Communications Cedar Valley P.S.C. Utah No. 1 Tariff.

[Signature]
DIRECT COMMUNICATIONS
9/10/19
DATE

ROCKY MOUNTAIN POWER

1. Pursuant to Utah Code Ann § 54-3-27 this plat conveys to the owner(s) or operators of utility facilities a public utility easement along with all the rights and duties described therein.

2. Pursuant to Utah Code Ann § 17-27a-603(4)(c)(ii) Rocky Mountain Power accepts delivery of the PUE as described in this plat and approves this plat solely for the purpose of confirming that the plat contains public utility easements and approximates the location of the public utility easements, but does not warrant their precise location. Rocky Mountain Power may require other easements in order to serve this development. This approval does not affect any right that Rocky Mountain Power has under

(1) A recorded easement or right-of-way
(2) The law applicable to prescriptive rights
(3) Title 54, Chapter 8a, Damage to Underground Utility Facilities, or
(4) Any other provision of law.

[Signature]
ROCKY MOUNTAIN POWER
9/10/19
DATE

2018118-376 Arrival Phase B Plat 4.dwg 18-376.dwg Sheets 02-Plat.dwg
Dec. 13-5-24 70.05P



Engineering Division
2565 North Pony Express Parkway
Eagle Mountain City, Utah 84005
(801) 789-6671

Tuesday, August 3, 2021

City Recorder's Office
Eagle Mountain City
1650 East Stage Coach Run
Eagle Mountain City, UT 84005

SUBJECT: Sunset Flats phase "A" plat 2 into warranty Bond Release

City Recorder:

The above referenced subdivision has completed all the required improvements as of this date. With the approval of the installed infrastructure, we are recommending this subdivision begin the required one-year warranty period. A reduced bond letter has been generated, reducing all bond items which have been completed. A warranty bond for the remaining warranty amount must be issued and maintained until released from the warranty period by the city.

Please contact me should you have any comments, questions, or concerns. Thank you.

Sincerely,

Christopher T. Trusty, P.E.
Engineering Director
Eagle Mountain City

Cc: Fionnuala Kofoed, City Recorder



**EAGLE MOUNTAIN CITY
CITY COUNCIL MEETING
AUGUST 24, 2021**

TITLE:	Declaring Surplus Property - Fleet Vehicles		
ITEM TYPE:	Resolution		
FISCAL IMPACT:			
APPLICANT:			
GENERAL PLAN DESIGNATION	CURRENT ZONE	ACREAGE	COMMUNITY

PUBLIC HEARING:

No

PREPARED BY:

Jeff Weber, Admin

PRESENTED BY:

Jeff Weber,
Facilities/Operations Director

RECOMMENDATION:

Staff recommends the City Council approve a resolution of Eagle Mountain City, Utah, declaring surplus property.

BACKGROUND:

Three of the vehicles on the bid awards on the 08.24.2021 City Council agenda are replacement vehicles for the Streets and Water Departments. This resolution declares the vehicles to be replaced as surplus property and allows staff to sell the property with any monetary proceeds from the sale to be credited to the General Fund.

ITEMS FOR CONSIDERATION:

REQUIRED FINDINGS:

PLANNING COMMISSION ACTION/RECOMMENDATION:

ATTACHMENTS:

[RES--Surplus Property - Vehicles](#)
[Exhibit A - Fleet Surplus Vehicles](#)

RESOLUTION NO. R- -2021

**A RESOLUTION OF EAGLE MOUNTAIN CITY, UTAH,
DECLARING SURPLUS PROPERTY**

PREAMBLE

WHEREAS, Section 3.25.010 of the Eagle Mountain Municipal Code describes the requirement for disposal of surplus property; and

WHEREAS, in accordance with the Eagle Mountain Municipal Code, it has been determined by the City Administrator that the vehicles described in Exhibit A are surplus and no longer needed by any City departments; and

WHEREAS, Eagle Mountain City desires to dispose of the vehicles.

NOW THEREFORE, BE IT RESOLVED by the City Council of Eagle Mountain City, Utah as follows:

1. The vehicles more specifically described in Exhibit A are hereby declared surplus property.
2. The value of the vehicles may be determined by one or more of the following methods to determine the highest and best economic return to the City:
 - a. Advertised competitive bid;
 - b. Evaluation by a qualified and disinterested appraiser;
 - c. Other professional publication and valuation service; or
 - d. An informal market survey by the City Administrator or designee.
3. Any monetary proceeds from the sale will be credited to the General Fund.

ADOPTED by the City Council of Eagle Mountain City, Utah, this 24th day of August, 2021.

EAGLE MOUNTAIN CITY, UTAH

Tom Westmoreland, Mayor

ATTEST:

Fionnuala B. Kofoed, MMC
Director of Administrative Services/City Recorder

CERTIFICATION

The above Resolution was adopted by the City Council of Eagle Mountain City, Utah on this 24th day of August, 2021.

Those voting aye:

Donna Burnham

Melissa Clark

Colby Curtis

Jared Gray

Carolyn Love

Those voting nay:

Donna Burnham

Melissa Clark

Colby Curtis

Jared Gray

Carolyn Love

Those excused:

Donna Burnham

Melissa Clark

Colby Curtis

Jared Gray

Carolyn Love

Those abstaining:

Donna Burnham

Melissa Clark

Colby Curtis

Jared Gray

Carolyn Love

Fionnuala B. Kofoed, MMC
Director of Administrative Services/City Recorder

Exhibit A

Vehicle Number	Department	Year	Make	Model	Mileage
56	Streets	2008	International	7400	90,000
75	Water	2014	Chevrolet	Silverado	108,572
77	Water	2014	Chevrolet	Silverado	106,248