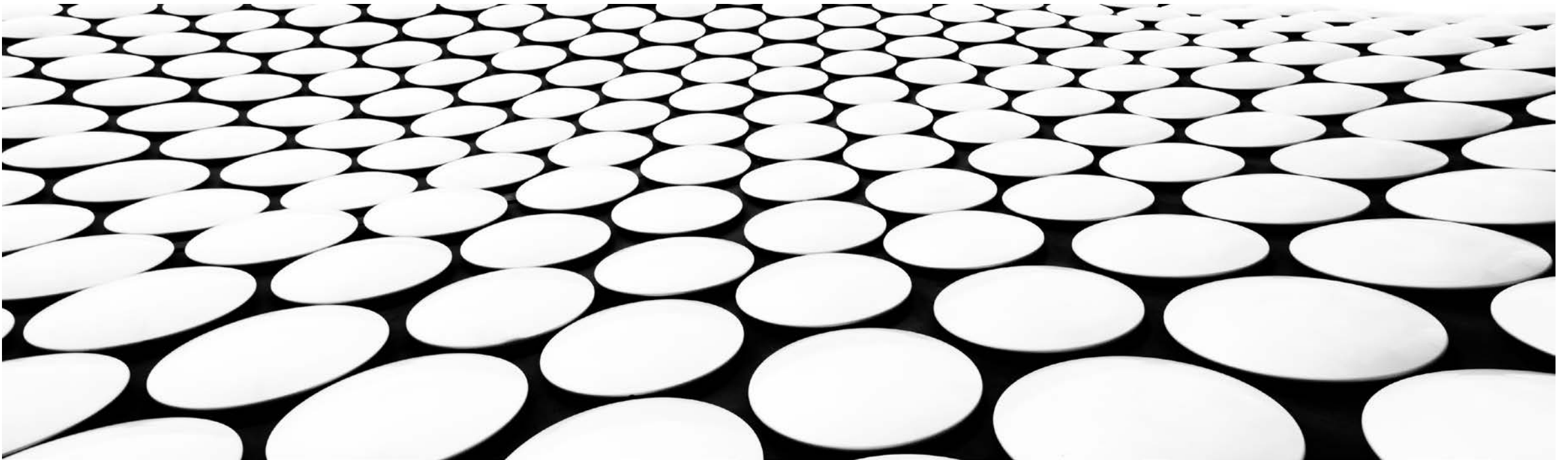


---

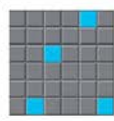
# CORAL CANYON AREA 3 WATER TANK

NOTICE ITEM FOR THE BOARD OF TRUSTEES 03/18/2021



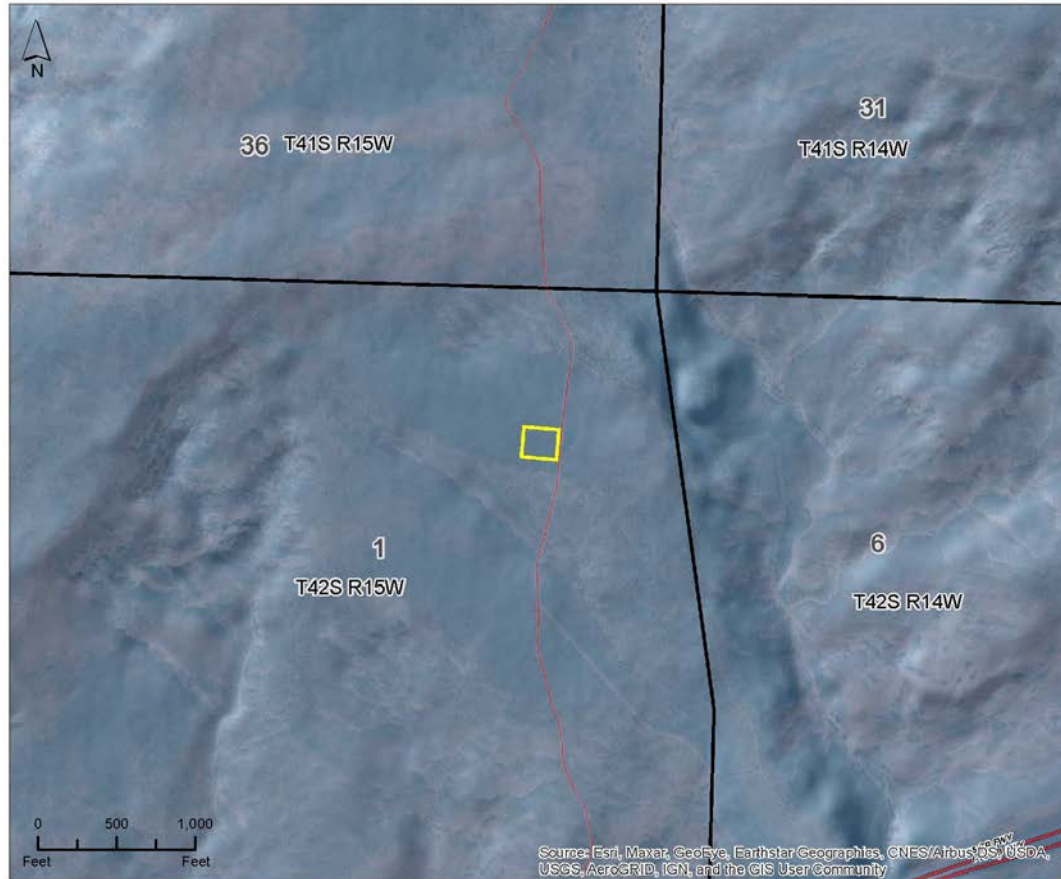






Development Dedication No. DEVL 1229 - Coral Canyon Water Tank Site

Washington County



Development Dedication No. 1229 - 1.00 Acres

**Land Ownership and Administration**

- Private
- State Trust Lands



Data represented on this map is for REFERENCE USE ONLY and is not suitable for legal, engineering, or surveying purposes. Users of this information should review or consult the primary data and information sources to ascertain the usability of the information. SITLA provides this data in good faith and shall in no event be liable for any incorrect results, or any special, indirect or consequential damages to any party, arising out of or in connection with the use or the inability to use the data herein. Land parcels, lease boundaries and associated SITLA data layers may have been adjusted to allow for visual "best fit." The Surface Ownership Land Status data (if present) are maintained by SITLA to reflect current trust status and surface ownership. Lakes, rivers, streams, highways, roads, county and state boundaries are distributed by the Utah Automated Geographic Reference Center and/or other sources as specified. Contour lines (if present) were generated from USGS 10 meter DEM. Please Note: While SITLA seeks to verify data for accuracy and content, discrepancies may exist within the data. Acquiring the most updated SITLA ownership GIS data may require contacting the GIS staff directly: 801-538-5100 or TLA-GIS@utah.gov. The SITLA GIS department welcomes your comments and concerns regarding the data and will attempt to resolve issues as they are brought to our attention. Produced: February 05, 2021 - kskelley

Document Path: Y:\GIS\GIS\_Group\State\Templates\TemplateApplication\_Development.mxd

Coordinate System: NAD 83 UTM Zone 12N

- Trust Lands will receive 11% of the gross sales price of each home, homes should sell for about \$425K - \$450K
- SITLA anticipates receiving about \$11 million on this project.
- Per the development agreement, SITLA needs to provide property for this tank site. Only one acre is needed.
- Tank site is in the Reserve, on the north side of I-15.

**STAFF WILL DISPOSE OF THE  
1-ACRE TANK SITE IN THE  
RESERVE TO ENABLE THE  
TRUST TO GENERATE \$11  
MILLION IN DEVELOPMENT  
MONEY FROM AREA 3**

ACTION ITEM