

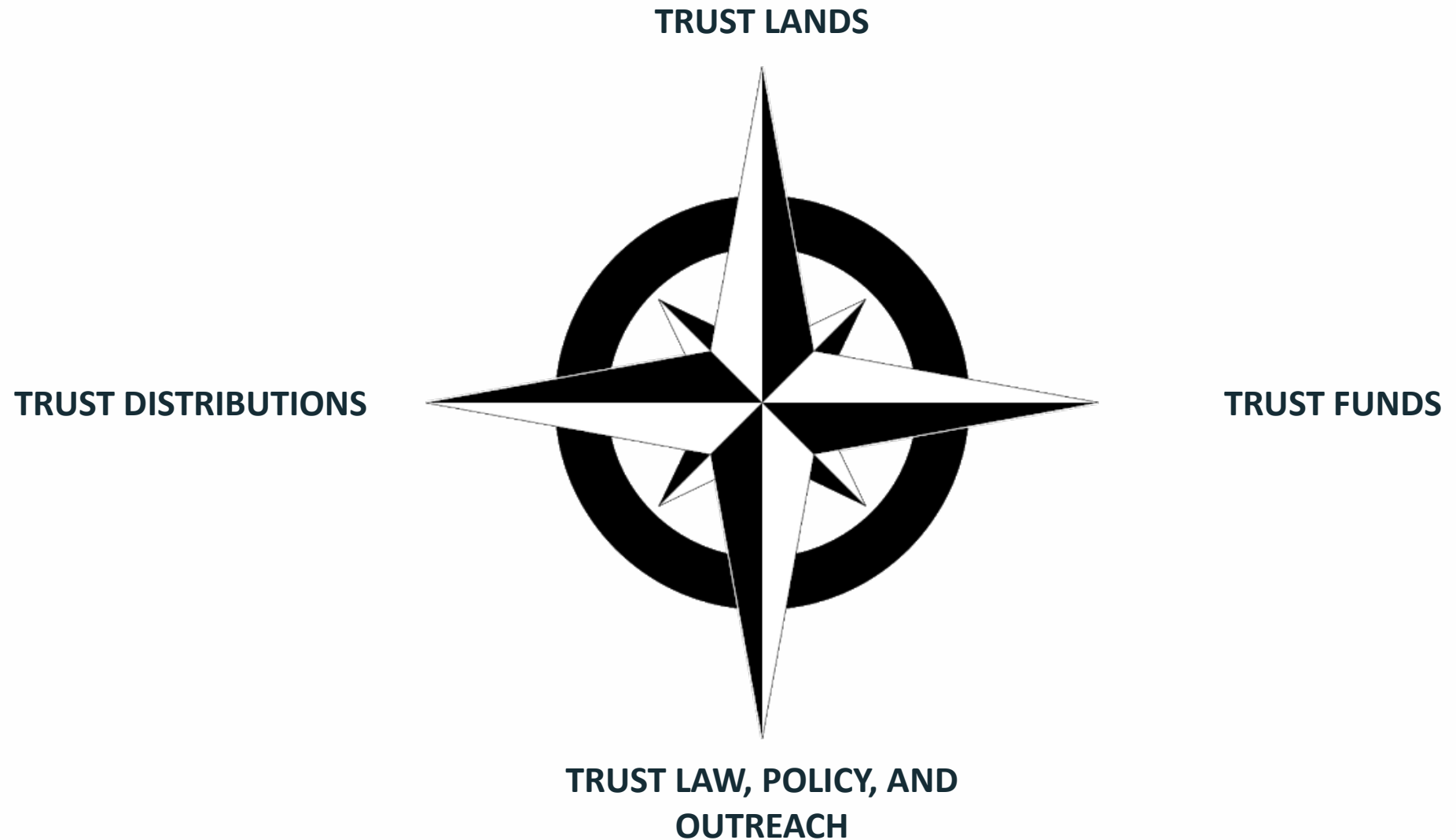
Utah Land Trusts
Protection &
Advocacy Office



LAND TRUST PROTECTION & ADVOCACY OFFICE

SITLA UPDATE - MARCH 18, 2021

The Four Front Fight



Trust Lands



•Inland Port Amendments

•([Rep. Gibson, Francis D.](#))

•In Process



[HB0089S01](#)

•Hydrogen Tax Credit Amendments

•([Rep. Sagers, Douglas V.](#))

•House/ filed



[HB0257S02](#)

•Utah State Park Amendments

•([Rep. Eliason, Steve](#))

•Draft of Enrolled Bill Prepared

[HB0415](#)

Executive Order Review Process Amendments

([Rep. Lyman, Phil](#))

House/ to Governor



[SB0233](#)

•Military Installation Development Authority Amendments

•([Sen. Stevenson, Jerry W.](#))

•Senate/ enrolled bill to Printing

•[SB0243S03](#)

•Political Subdivisions Amendments

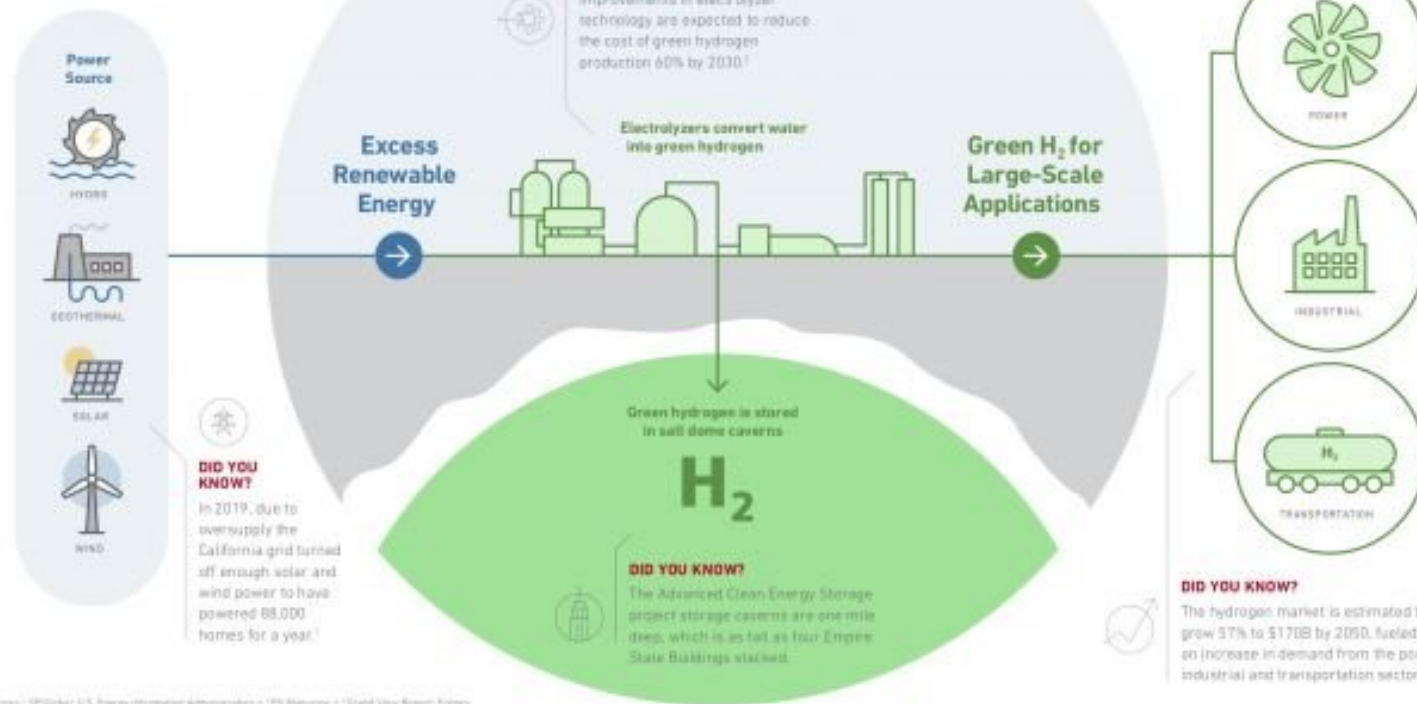
•([Sen. Stevenson, Jerry W.](#))

•Senate/ to Governor

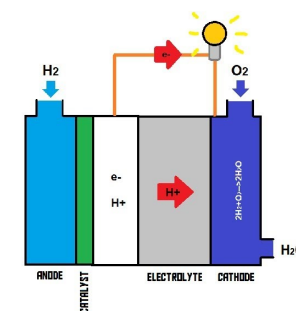


ADVANCED CLEAN ENERGY STORAGE

Based in Central Utah, the Advanced Clean Energy Storage project is the world's largest energy storage project. It uses proven technologies to develop a path toward a 100% renewable future.

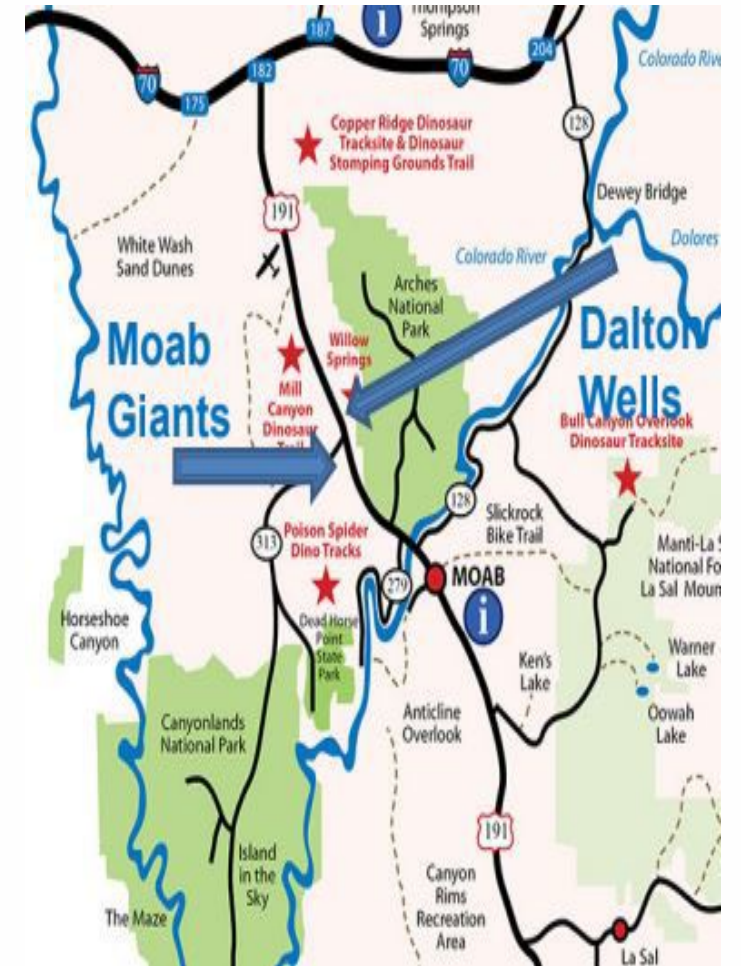


Sources: ¹SP Global U.S. Energy Information Administration • ²PN Magazine • ³Grand View Research, Future



HYDROGEN FUEL CELLS





Trust Funds



[HB0002](#)

Public Education Budget Amendments

([Rep. Eliason, Steve](#))

House/ to Governor



[SB0169](#)

**School and Institutional Trust Fund Office
Amendments**

([Sen. Wilson, Chris H.](#))

Draft of Enrolled Bill Prepared



Trust Distributions



[HB0002](#)

Public Education Budget Amendments

([Rep. Eliason, Steve](#))

House/ to Governor



[HB0222](#)

School Land Trust Program Amendments

([Rep. Moss, Jefferson](#))

House/ to Governor

(3/11/2021)



[SB0178](#)

Education Deadline and Fiscal Flexibility

([Sen. Fillmore, Lincoln](#))

Draft of Enrolled Bill Prepared

(3/9/2021)



Trust Law, Policy, and Outreach



[HB0408](#)

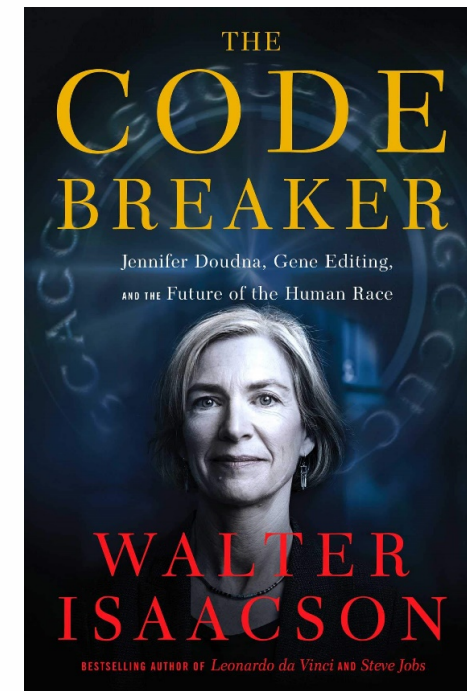
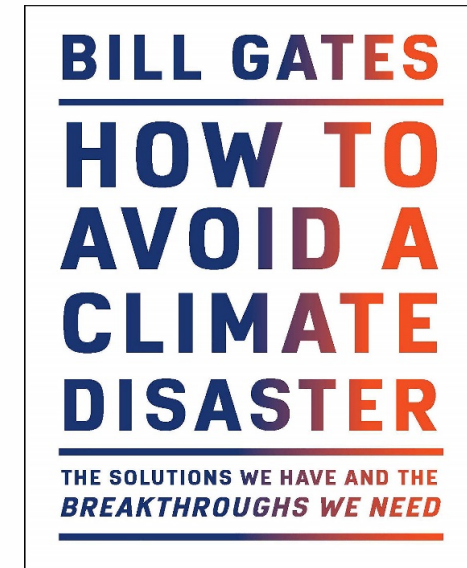
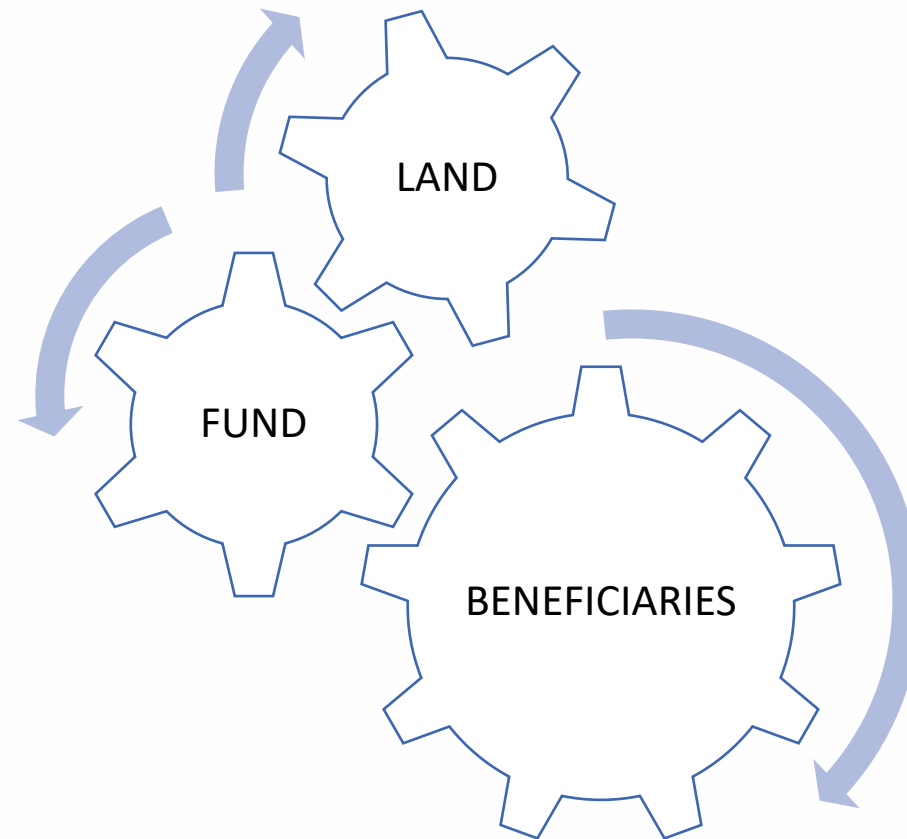
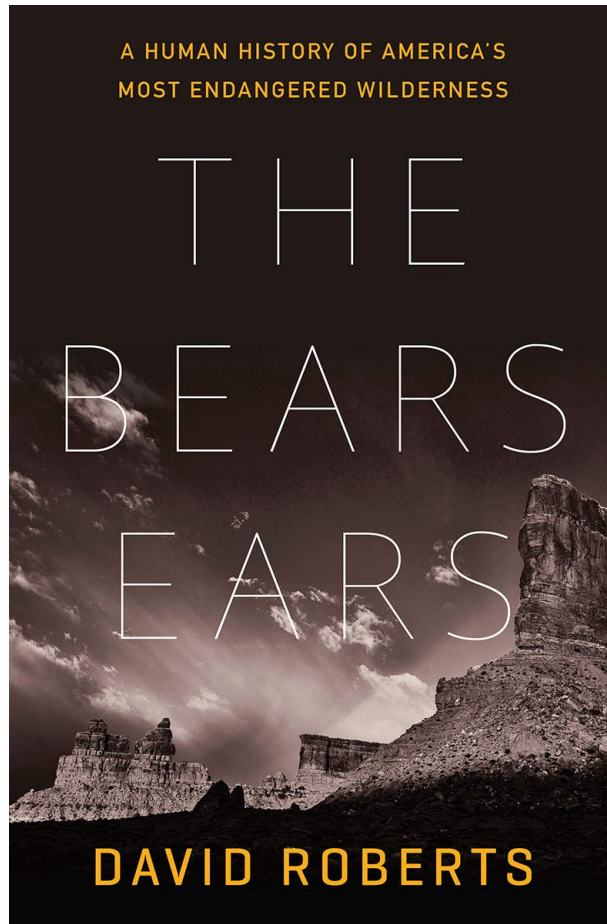
School and Institutional Trust Amendments

[\(Rep. Last, Bradley G.\)](#)

House/ filed

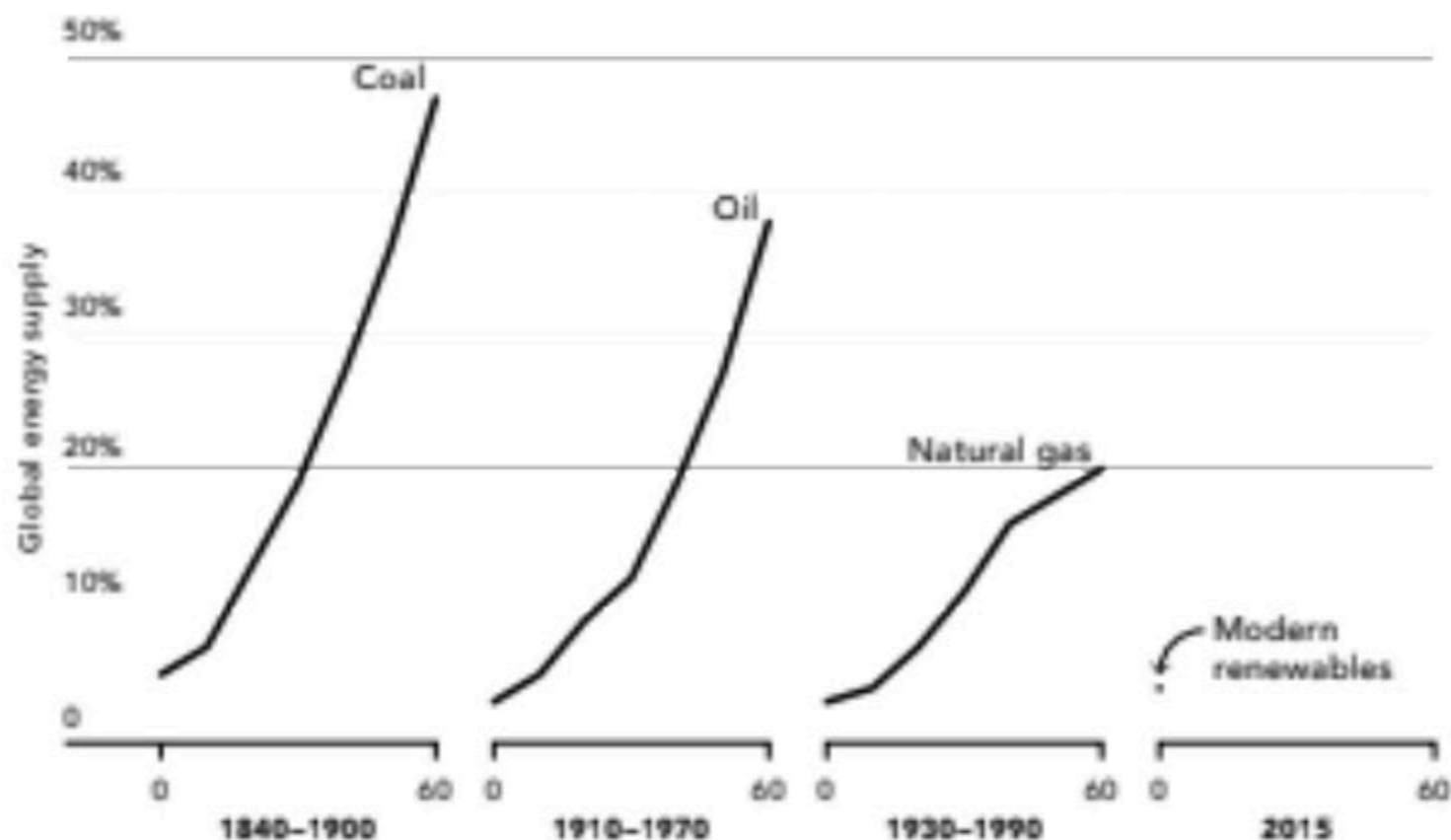
(3/5/2021)





Books I am Reading & Thoughts I am Thinking...





It takes a really long time to adopt new sources of energy. Notice how in 60 years coal went from 5 percent of the world's energy supply to nearly 50 percent. But natural gas reached only 20 percent in the same amount of time. [Vaclav Smil, *Energy Transitions*]



The Economist

energy was the worst performing sector S&P 500 in '14, '15, '18, & '19
10 years ago energy companies comprised 13% of the S&P 500, now 3%

OPEN ACCESS

Is Wyoming's school funding model about to fail?

• [By Kathryn Palmer | Wyoming Tribune Eagle](#)

• Mar 14, 2021

The Dallas Morning News

OPINION How vulnerable is Texas public education funding to a world oil price downturn? The oil and gas industry generates billions of dollars for Texas public education. 4th grade students wearing masks and face

By Margaret Spellings and Brett Perlman 1:30 AM on Mar 15, 2021 CD



Questions, Comments, Corrections?

