

# Hooper General Plan

## Advisory Committee Meeting 3



March 2, 2021 | 7:00 - 8:30

1. Existing General Plan Review
2. Outreach Round 2
  - a) Summary
  - b) Walkthrough – Map Feedback (*see page 4*)
  - c) Focus Group meeting 2
  - d) Living Room Chats
3. Survey #2
4. Vision Statements – Second Draft
5. **Next Meeting:** April \_\_\_\_\_ at 7:00pm

---

## 1. EXAMINING THE CURRENT GENERAL PLAN

Remember that the purpose of a General Plan is to present a common vision that will help guide the future growth and development of your community. Therefore, the General Plan should be clear, concise, and user-friendly.

- What about the current General Plan works well for your community?
- Do you reference the General Plan often? Why or why not?
- What questions about the General Plan do you get again and again from community members, stakeholders, or developers?
- Does anything stand out to you as a section that needs more significant attention?
- What would make the General Plan more user-friendly?

*If you have taken more detailed notes on your paper copy of the General Plan, Shauna will collect it from, scan it, and send it to us. You will then get your copy back. If you feel your feedback is captured during the conversation, there is no need for Shauna to scan your copy.*

## 2. COMMUNITY OUTREACH ROUND 2

### Survey #2

#### Responsibilities:

- WFRC:
  - Create draft survey
  - Create final survey based on feedback (online and paper)
  - Post survey to project website
- Advisory Committee:
  - Provide feedback by end of day on Thursday, March 11
  - Paper copy mailed?
- Hooper City:
  - Post a project update about the second round of community engagement on social media pages and city website
  - Print and deliver paper copies of the survey
  - Collect paper copies and input responses in the online survey

**Date Open:**

**Date Closed:**

### Walkthrough – Map Review

#### Responsibilities:

- WFRC:
  - Create & print large scale maps
  - Create poster with instructions for giving feedback
  - Online and paper “Comment Cards” for feedback
  - Create and share a poster advertising this opportunity
  - Provide easels
- Hooper City / Advisory Committee:
  - Display the posters
  - Replenish paper comment cards as needed
  - Collect paper comment cards and input responses into the online form
  - Advertise the opportunity on city website and social media

**Date Open:**

**Date Closed:**

### Focus Groups: Meeting #2

#### Responsibilities:

- WFRC:
  - Create and share the Zoom invitation
  - Contact Focus Group members
  - Facilitate the meeting
- Advisory Committee:
  - Would you like to select a meeting date and time?
  - Prepare questions, ideas, or scenarios you would like the group to discuss

**Dates:**

Land Use and Housing:

Commercial Development:

Transportation:

Parks, Trails, and Open Space:

### Living Room Chats (in May)

#### Responsibilities:

- WFRC:
  - Contact community members who indicated interest
  - Provide instructions
  - Provide questions to facilitate conversation
  - Collect notes taken at each meeting
- Advisory Committee:
  - Encourage these community-led conversations
  - Attend if desired, but be there to listen

# Proposed Calendar

## MARCH

S	M	T	W	T	F	S
28	1	2	3	4	5	6
7	8	9 Advisory Committee Meeting	10	11	12 Survey #2 Feedback Due	13
14	15	16 Survey #2 available	17	18	19	20
21	22	23	24	25	26	27
28	29 Focus Group Meetings	30	31	1	2	3

## APRIL

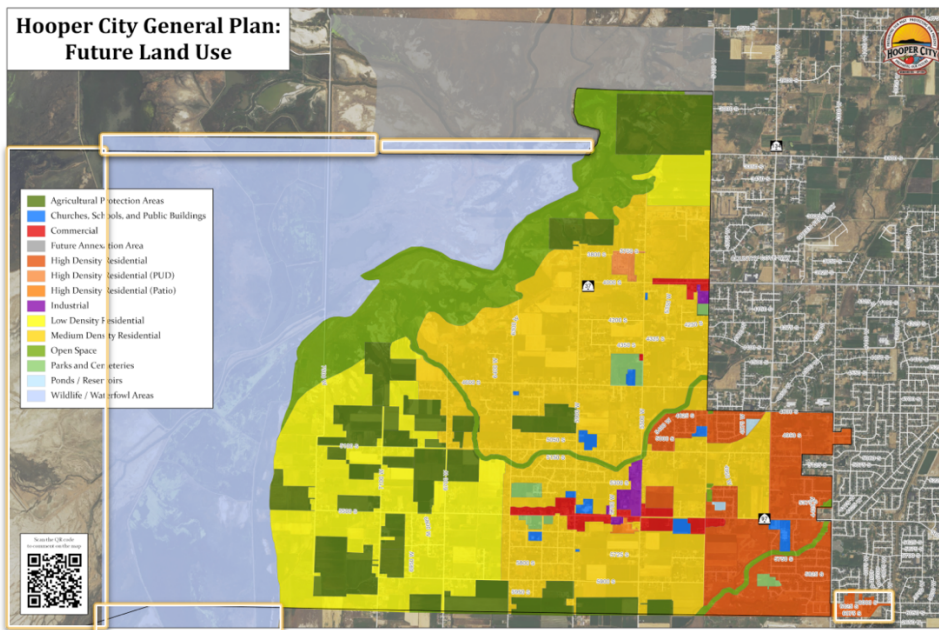
S	M	T	W	T	F	S
28	29	30	31	1	2	3
4	5 Maps Available for Feedback	6	7	8	9	10
11	12	13	14	15	16	17
18	19	20	21	22	23 Survey #2 Deadline	24
25	26	27	28	29	30	1

## Walkthrough – Map Feedback


In order to provide as many community members as possible with the opportunity to provide feedback on the maps, we would recommend having the maps displayed during business hours for about 3 weeks. You might also consider having the office open, at least for a few hours, on a Friday and/or Saturday for those who can't make it in during business hours. We will, of course, have the maps available for review online as well.

Inside the City Offices, three maps will be displayed:

1. The current Future Land Use Map
2. Parks, Recreation, and Trails Map (including existing and planned)
3. Transportation Map



There will be paper comment cards available as well as the option to provide comments online through a smart phone.



**General Plan Update**  
Current Map Feedback

*Please share your thoughts on each map. When needed, be specific about the locations you are describing.*

1) **Current Future Land Use Map**

2) **Parks, Recreation, and Trails Map**

3) **Transportation Map**

Instructions will be provided on a separate poster that will be displayed alongside the three maps. *WFR to provide printed maps, comment cards, and instructions poster.*

### 3. Survey #2

As you know, Hooper City is in the process of updating its General Plan. The General Plan is a document that serves as a guide for the vision, growth, safety, and welfare of present and future citizens of the city.

In the first round of community engagement, there were 737 survey responses, 23 community members attended the Open House, and 24 community members participated in Focus Groups. A summary of the results of this first round of engagement is published on the project website (<https://planhooper.weebly.com/>) under the "Get Involved" tab.

In this second round of community engagement, we are asking for more specific information so that the General Plan can be tailored even more to your community. Please complete the survey below by **Friday, April 23rd**. The survey can be completed on paper and returned to the City Offices or completed online at <https://planhooper.weebly.com/>.

THANK YOU for your participation and continued support of Hooper City!

---

**Through the first survey and community feedback, several priorities emerged. Please respond to questions 1 - 5 considering the areas on which Hooper should focus over the next 15 - 20 years.**

1. Please rank the following in order of priority with number 1 being the highest priority.
  - a. Improving parks, recreation, and open space
  - b. Protecting agricultural and wetlands areas
  - c. Economic development to increase the tax base
  - d. Addressing zoning, particularly in regard to residential density
  
2. We understand that some improvements are desired. How would you support funding any of these improvements?
  - a. Locally owned shops, restaurants, and cafes in Hooper
  - b. Office space for rent or purchase in Hooper
  - c. Small, but not necessarily locally owned retail, restaurants and cafes
  - d. Increased property taxes (currently, the city property tax is .000401%)
  
3. Imagine that you have \$100 total to allocate to natural resource protection in Hooper. What amount would you give to each of the following? (Ensure that the total is \$100.)
  - a. Maintaining or improving water quality
  - b. Protecting farmland
  - c. Protecting and maintaining wetlands
  - d. Protecting and maintaining open space

**82% of survey respondents indicated that any new housing in Hooper should meet design standards created by the city.**

4. Which set of words best describe Hooper?
  - a. Rural, nostalgic, traditional
  - b. Evolving, unique, vibrant
  - c. Historical, charming, quaint
  - d. Rustic, connected to nature, hospitable
  - e. Other:
  
5. Which of the following is the most important for maintaining or improving the character of Hooper?
  - a. Requiring new housing units to be built on large lots (at least ½ acre)
  - b. Requiring housing units to be set back far enough from the street
  - c. Requiring design aesthetics to make housing units look as if they fit in
  - d. Requiring new housing developments to include a variety of different housing types (different sizes, styles, single-story and two-story)
  
6. How important is it to have consistent signage, street lights, and landscaping in new and existing developments?
  - a. Extremely important
  - b. Somewhat important
  - c. Not at all important
  
7. In five words or less, describe your ideal for future housing in Hooper.

**83% of respondents said it was either 'important' or 'very important' for their children to be able to stay and live in Hooper.**

8. What do you believe are the biggest factors that would impact the next generation's decision to stay and live in Hooper? Select all that apply.
  - a. Availability of housing that is affordable to them
  - b. Access to jobs and education
  - c. Maintaining or improving design standards focused on the small-town character of Hooper
  - d. Community events and opportunities to be involved
  - e. Access to recreational activities and connection to nature
  - f. Feeling of safety and security

**77% of respondents indicated that it is ‘important’ or ‘very important’ to increase alternative modes of transportation (bus, biking, walking, horse riding trails).**

10. Which type(s) of alternative transportation should Hooper focus on? Select all that apply.

- a. Providing access to busses
- b. Increasing or improving bike infrastructure, such as protected and connected bike lanes
- c. Increase options for walking through connected trails, parks, and open space
- d. Increase and/or improve access to horse riding trails

11. If a developer were to be required to contribute to the improvement of Hooper, what would you most want to see contributions to?

- a. Infrastructure, such as sewers, roads, and sidewalks
- b. Green space, such as parks, trails, or open space

**75% of respondents indicated that it is more important to improve *existing* parks, trails, and open spaces rather than to build or acquire *new* spaces.**

11. Please rank the following in order of importance with 1 being the most important.

- a. Connecting parks, trails, and open space to improve accessibility
- b. Adding facilities to parks such as additional restrooms and lighting
- c. Adding or improving parking options at parks and trails
- d. Exploring an access point to Fremont Island
- e. Improving the safety of walking and biking trails

**48% of respondents ‘disagreed’ or ‘strongly disagreed’ that the area at 5500S and 5500W should be walkable “Main Street” with small shops and cafes. (Imagine a [Midway Main Street](#).)**

12. If you disagreed, please select the option that best describes your reasoning.

- a. I don’t like the idea of Hooper having a Main Street.
- b. I like the idea of a Main Street, but I don’t think it should be near 5500S and 5500W.
- c. I like the idea of a Main Street, but I want to ensure that there is convenient parking available.
- d. I am interested in the idea of a Main Street, but I have questions or concerns.
- e. I am in favor of a Main Street near 5500S and 5500W.
- f. Please explain your response:**

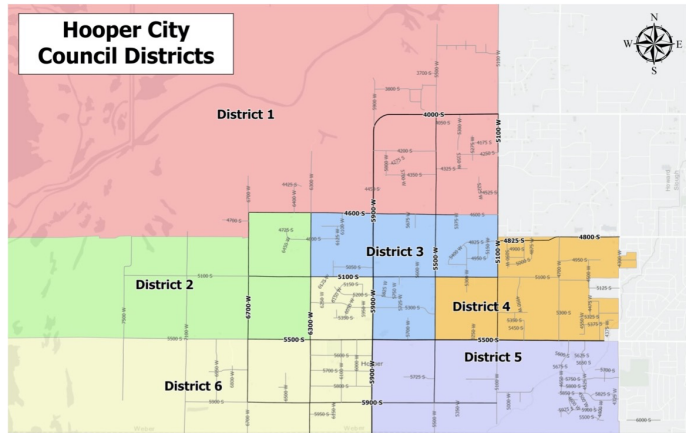
13. What community values are the most important to you? Select your top three.

- a. Neighborliness
- b. Family-oriented
- c. Heritage and history
- d. Small town feel
- e. Stewardship
- f. Education
- g. Health and well-being
- h. Recreation
- i. Safety and security
- j. Collaborative
- k. Entrepreneurial
- l. Inclusive
- m. Multi-generational

14. In one to two sentences, describe what you would like Hooper City to look and feel like in 20 years.

15. In which city council district do you live?

- a. District 1
- b. District 2
- c. District 3
- d. District 4
- e. District 5
- f. District 6



## 4. VISION STATEMENTS

***DRAFT, March 2021***

The following statements are meant to capture the aspirations of Hooper based on the input gathered to date. The vision statements, when finalized, will guide the goals and principles of each element of the general plan. These statements are in no particular order.

- 1. Hooper is a close-knit community that wants growth to be responsible, sustainable, and safe.*
- 2. Hooper values their agricultural land and their farming community.*
- 3. Hooper is friendly to home businesses, neighborhood services and dining, and small retail shops that fit our small-town feel.*
- 4. Hooper wants to maintain and improve their already desirable parks and outdoor recreation opportunities while also connecting them as a robust trails system.*
- 5. Hooper has exciting community events in which all community members can be involved.*
- 6. Hooper has a rich history that should be preserved and honored.*