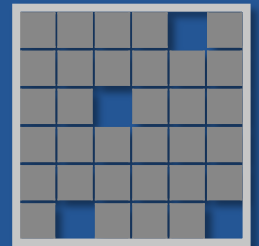


UTAH TRUST LANDS

Proposed Negotiated Sales

Kanab Ranchos

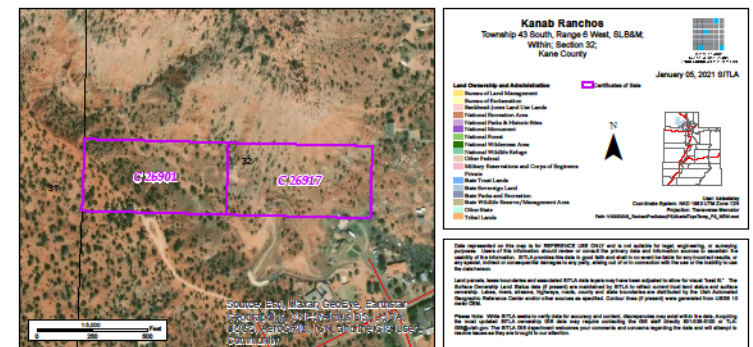
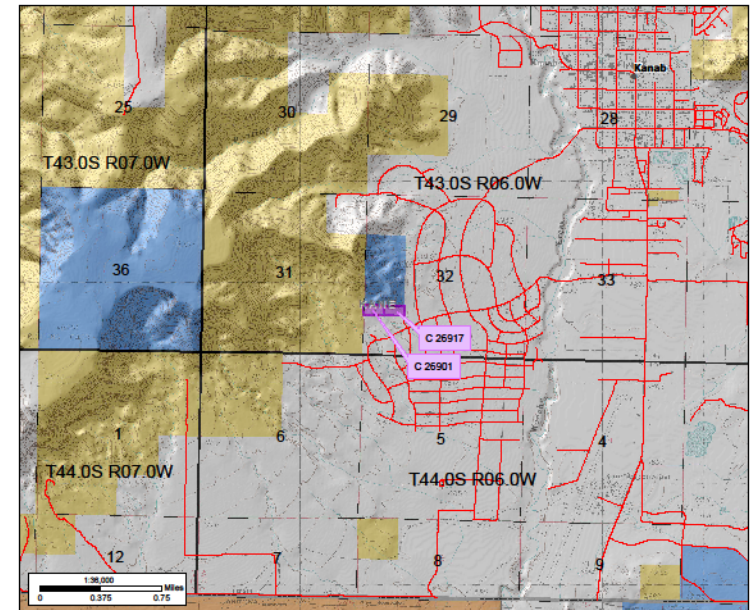
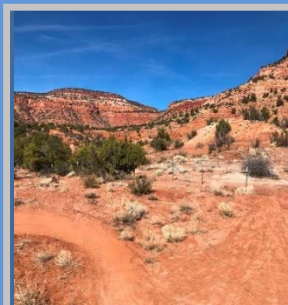
C-26901 (Tharp) and C-26917 (Kanab City)



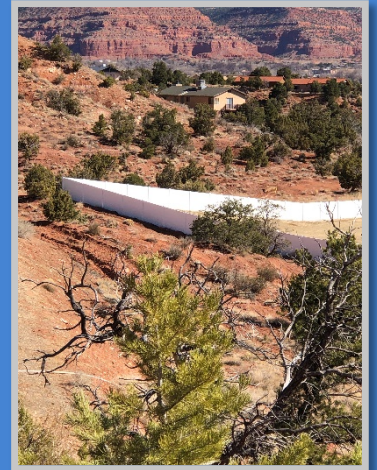
KANAB RANCHOS

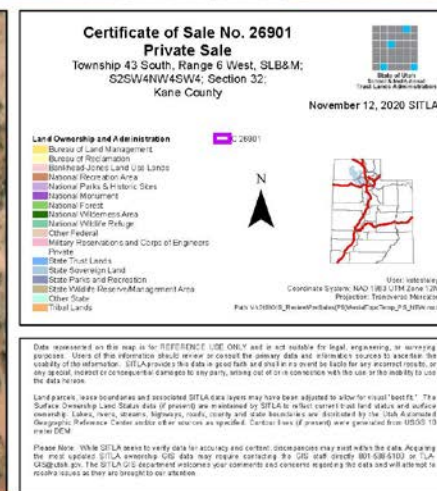
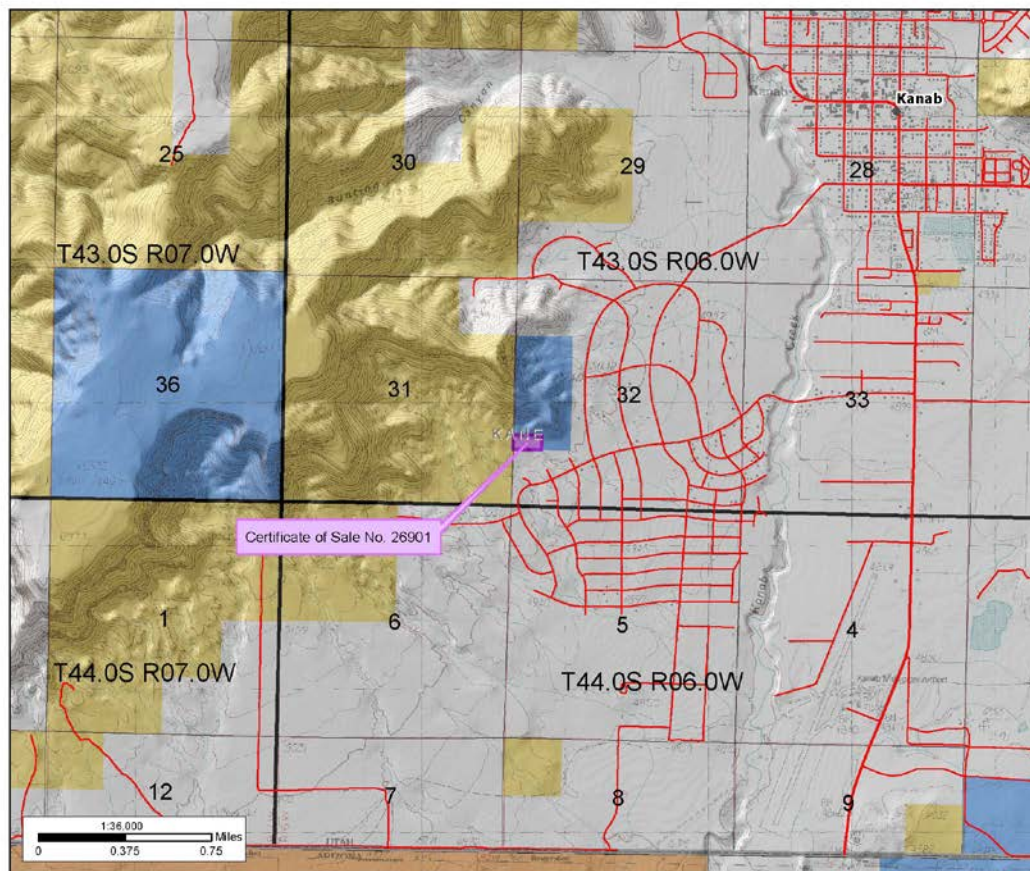
10.00 ACRES TOTAL – SCHOOL FUND – KANE COUNTY

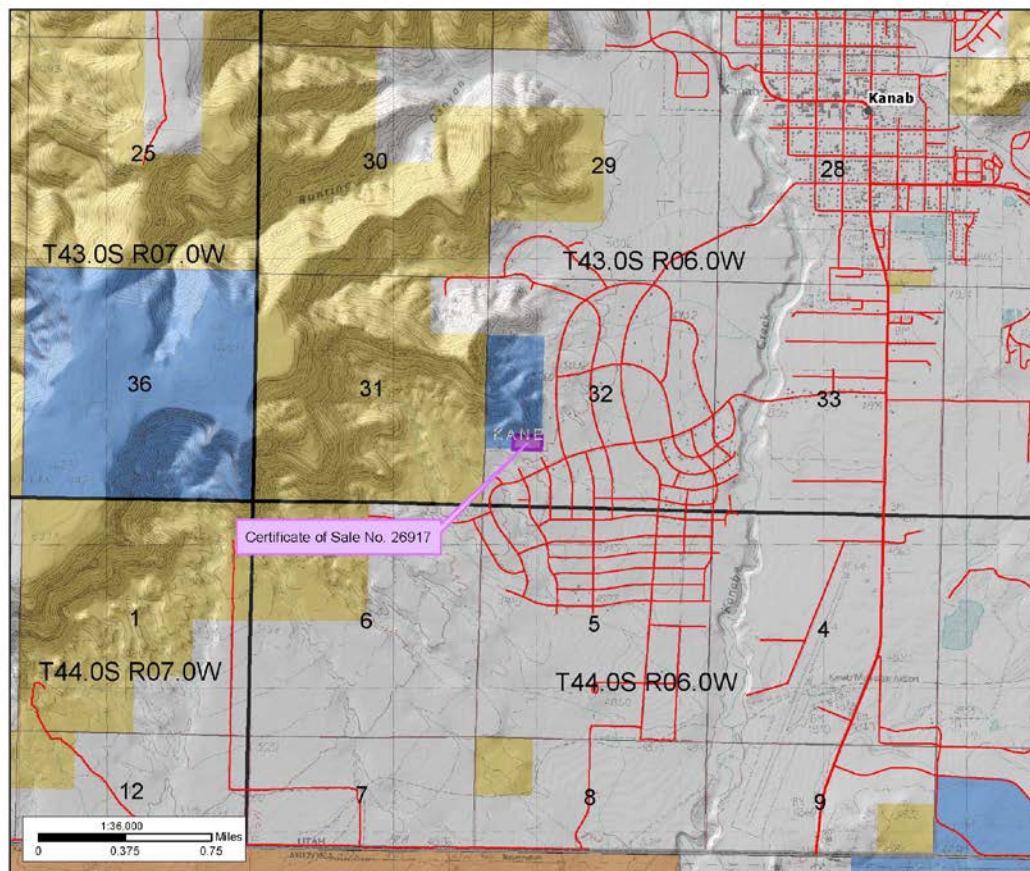
- Proposed negotiated sales to Kanab City and the Tharp Family – 5.00 acres each (10.00 acres total)
- To resolve historical trespass situations – part of a larger 80-acre parcel
- [Tharp \(C-26901\)](#) – several buildings constructed in trespass by previous landowner – buildings were torn down by the Tharp Family who desires to purchase the SITLA property adjacent to their back yard – offer of \$25,846 (slightly over appraisal)
- [Kanab City \(C-26917\)](#) – trespass of sediment basin for flood control and a fence on SITLA property – offer of \$17,855 (appraised amount)
- Topography and access issues warrant negotiated sale vs. auction sale



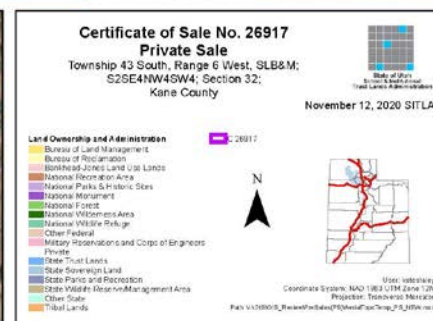
Kanab Ranchos Photos







Source: Esri, Maxar GeoEye, Earthstar
Geographics, CNES/Airbus DS, USDA,
USGS, AeroGRID, IGN, and the GIS User
Community



Date represented on this map is for REFERENCE USE ONLY and is not suitable for legal, engineering, or surveying purposes. Users of this information should exercise caution and consult the primary data and information to verify the quality of the information. SITLA provides this data as a good faith and should not be used for any purpose other than the intended purpose, or any other purpose, without the prior written consent of the State of Utah.

Land parcels, water boundaries and associated SITLA data layers may have been adjusted to reflect "visual" features. The Surface Ownership Land Status data (if present) are intended by SITLA to reflect current land status and surface ownership. Lakes, rivers, streams, highways, roads, county and state boundaries are disclosed by the Utah Automated Geographic Reference Center and/or other sources as specified. Contour lines (if present) were generated from USGS 10 meter DEM.

Please Note: While SITLA aims to verify data for accuracy and content, discrepancies may exist with the data. After the most updated SITLA update, GIS data may require contacting the GIS staff directly at 888.686.6103 or T44.0S R06.0W. The SITLA is developed exclusively for community and consumer mapping and data and will not be used in any other way as they are brought to our attention.



Purchaser	Acres	\$/Acre	Total Price	Totals	Premium Offer
Tharps	0.4	\$18,571	\$7,428	\$23,854	1.083%
	4.6	\$3,571	\$16,426		\$25,846
Kanab City	5	\$3,571	\$17,855	\$17,855	——
Totals	10				\$43,701

QUESTIONS?
THANK YOU