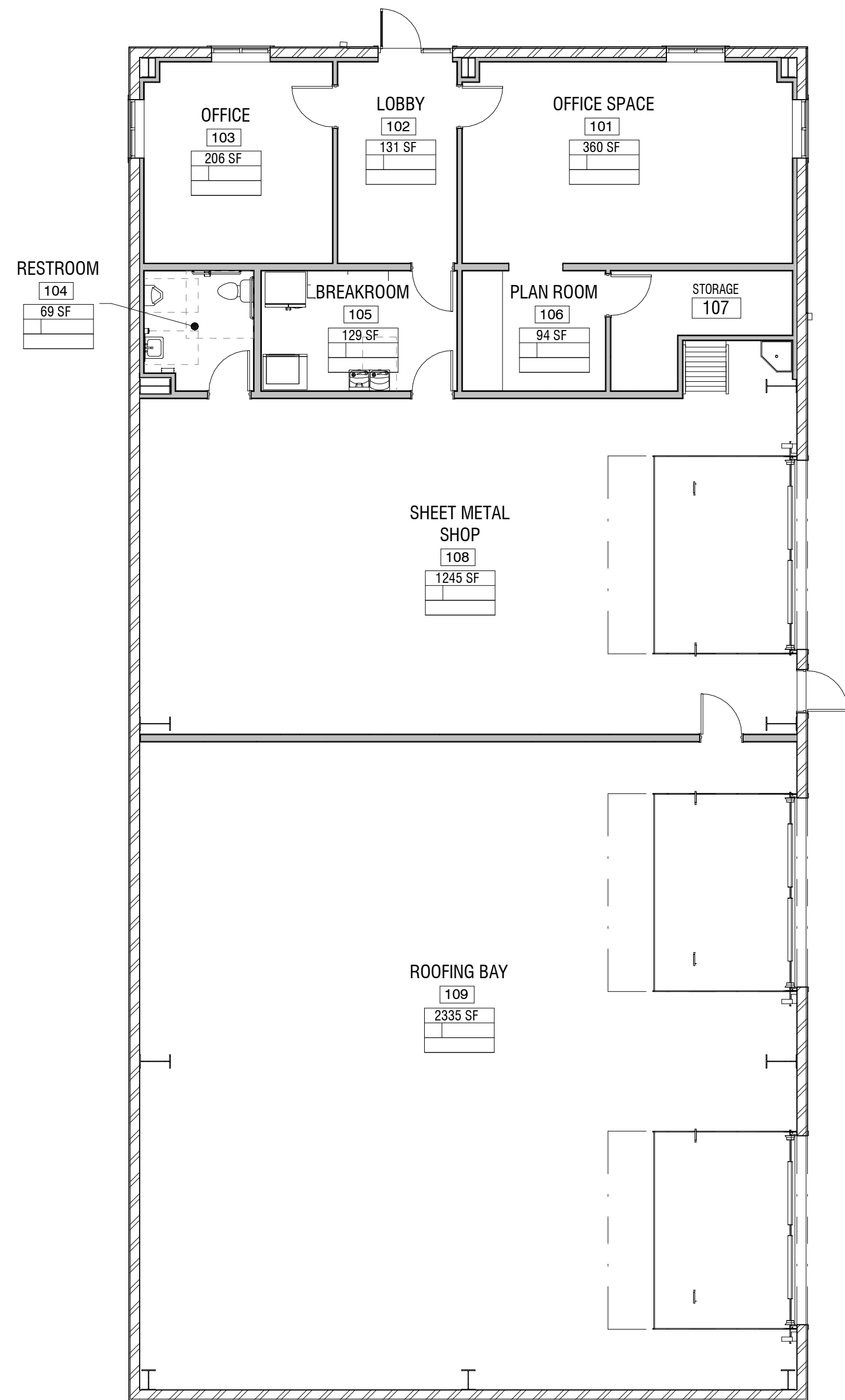


OCCUPANCY LOADS

NUMBER NAME	AREA	OCCUPANCY	OLF EGRESS	OCCUPANT LOAD: EGRESS	NUMBER NAME	AREA	OCCUPANCY	OLF EGRESS	OCCUPANT LOAD: EGRESS
101 OFFICE SPACE	360 SF								
102 LOBBY	131 SF								
103 OFFICE	206 SF								
104 RESTROOM	69 SF								
105 BREAKROOM	129 SF								
106 PLAN ROOM	94 SF								
107 STORAGE	84 SF								
108 SHEET METAL SHOP	1245 SF			0					
109 ROOFING BAY	2335 SF			0					
	4654 SF								
	4654 SF								
201 MEZZANINE	1161 SF								
202 UTILITY CLOSET	36 SF								
	1197 SF			0					
	1197 SF			0					
	5852 SF								
Grand total									



A1 CODE PLAN

1/8" = 1'-0"



CODE REVIEW

JURISDICTION
?

CODE
2018 INTERNATIONAL BUILDING CODE
2015 INTERNATIONAL MECHANICAL CODE
2015 INTERNATIONAL PLUMBING CODE
2014 NATIONAL ELECTRICAL CODE

OCCUPANCY
OCCUPANCY: ?

REQUIRED SEPARATION OF OCCUPANCIES (508.4)
?

TYPE OF CONSTRUCTION
?

AUTOMATIC SPRINKLER SYSTEM
?

BUILDING HEIGHT (504.3)
ALLOWABLE BUILDING HEIGHT ?
PROPOSED BUILDING HEIGHT ?

NUMBER OF STORIES (504.4)
ALLOWABLE NUMBER OF STORIES ?
PROPOSED NUMBER OF STORIES ?

BUILDING AREA - (?) OCCUPANCY, (?) STORY (506.2.1)
ALLOWABLE AREA INCREASE

TABULAR AREA ALLOWED:
FRONTAGE INCREASE $(1 - (F/P - 0.25)W/30)$ $A_i = ?$
SPRINKLER SYSTEM INCREASE $L_i = ?$
BUILDING PERIMETER WITH $\geq 30'$ TO CLEAR FRONTAGE $F = ?$
TOTAL BUILDING PERIMETER $P = ?$
WIDTH OF PUBLIC WAY OR OPEN SPACE $W = ?$
TABULAR ALLOWABLE AREA FACTOR FOR A NONSPRINKLERED BUILDING (REGARDLESS OF WHETHER THE BUILDING IS SPRINKLERED) $NS = ?$
PER STORY FACTOR $S_{st} = 1$
ACTUAL BUILDING STORIES FACTOR $S_{st} = 2$

CALCULATED TOTAL ALLOWABLE AREA PER STORY
 $A_i = (A + (NS * h))S_{st} = ? SF$
CALCULATED MAXIMUM ALLOWABLE AREA COMBINED STORIES
 $A_i = (A + (NS * h))S_{st} = ? SF$

ACTUAL DESIGNED AREA
LEVEL 01 = ? SF
LEVEL 02 = ? SF
GROSS TOTAL = ? SF

FIRE RESISTIVE REQUIREMENTS FOR OCCUPANCY ? - TYPE ? (TABLE 601)

PRIMARY STRUCTURAL FRAME	? HR RATING
BEARING WALLS	
EXTERIOR	? HR RATING
INTERIOR	? HR RATING
NON BEARING WALLS	? HR RATING
FLOOR CONSTRUCTION	? HR RATING
ROOF CONSTRUCTION	? HR RATING
SHAFT WALLS	? HR RATING

FIRE WALL FIRE RESISTANCE REQUIREMENTS (TABLE 706.4)
FIRE WALL FOR OCCUPANCY ? - TYPE ? ? HR RATING

OCCUPANT LOAD CALCULATION (TABLE 1004.1.2)
TOTAL = ? OCCUPANTS - SEE ADJACENT SCHEDULE ON SHEET

EGRESS WIDTH (TABLE 1005.1)
OTHER EGRESS 0.2 INCHES PER OCCUPANT

PLUMBING FIXTURE REQUIREMENTS (TABLE 2902.1)

OCCUPANCY	CALCULATED OCCUPANTS	REQUIRED
WATER CLOSETS		
LEVEL 01		
?	? OCCUPANTS	? M / ? F
?	? OCCUPANTS	? M / ? F
?	? OCCUPANTS	? M / ? F
	ACTUAL	? M / ? F
LEVEL 02		
?	? OCCUPANTS	? M / ? F
?	? OCCUPANTS	? M / ? F
	ACTUAL	? M / ? F
LAVATORIES		
LEVEL 01		
?	? OCCUPANTS	? M / ? F
?	? OCCUPANTS	? M / ? F
?	? OCCUPANTS	? M / ? F
	ACTUAL	? M / ? F
LEVEL 02		
?	? OCCUPANTS	? M / ? F
?	? OCCUPANTS	? M / ? F
	ACTUAL	? M / ? F
DRINKING FOUNTAINS		
LEVEL 01		
?	? OCCUPANTS	?
?	? OCCUPANTS	?
?	? OCCUPANTS	?
	ACTUAL	?
LEVEL 02		
?	? OCCUPANTS	?
?	? OCCUPANTS	?
	ACTUAL	?
SERVICE SINKS		
REQUIRED		?
		ACTUAL ?

DESCRIPTION:

DATE:

MARK:

PROJECT #: 420744
DRAWN BY: NIELSON
CHECKED BY: WILLIAMS
ISSUED: XXXX.XXXX

NOT FOR CONSTRUCTION

KEYNOTES

#	MARK	DESCRIPTION
---	------	-------------

GENERAL NOTES

- HOLLOW METAL FRAME AND ALUMINUM WINDOW TYPES ARE SHOWN ON SHEET SERIES A-570. DIMENSIONS TO FRAMES WILL BE TO OUTSIDE EDGE OF FRAME. SEE BOTH THE FLOOR PLAN AND EXTERIOR ELEVATIONS FOR ALL WINDOW TYPE REFERENCES
- SEE FINISH PLANS FOR SIGNAGE LOCATION
- SEE SHEET SERIES G-??? & A-??? FOR ALL FIRE WALLS, SMOKE WALLS, WALLS TO CEILING LEVEL, SOUND WALLS
- FEC = FIRE EXTINGUISHER IN SEMI-RECESSED CABINET
- 24V-120 INDICATES INTERIOR ROOM ELEVATIONS ON SHEET REFERENCED
- SEE SITE PLANS FOR EXTERIOR STAIRS, RAILING AND RAMP DETAILS

GENERAL NOTES

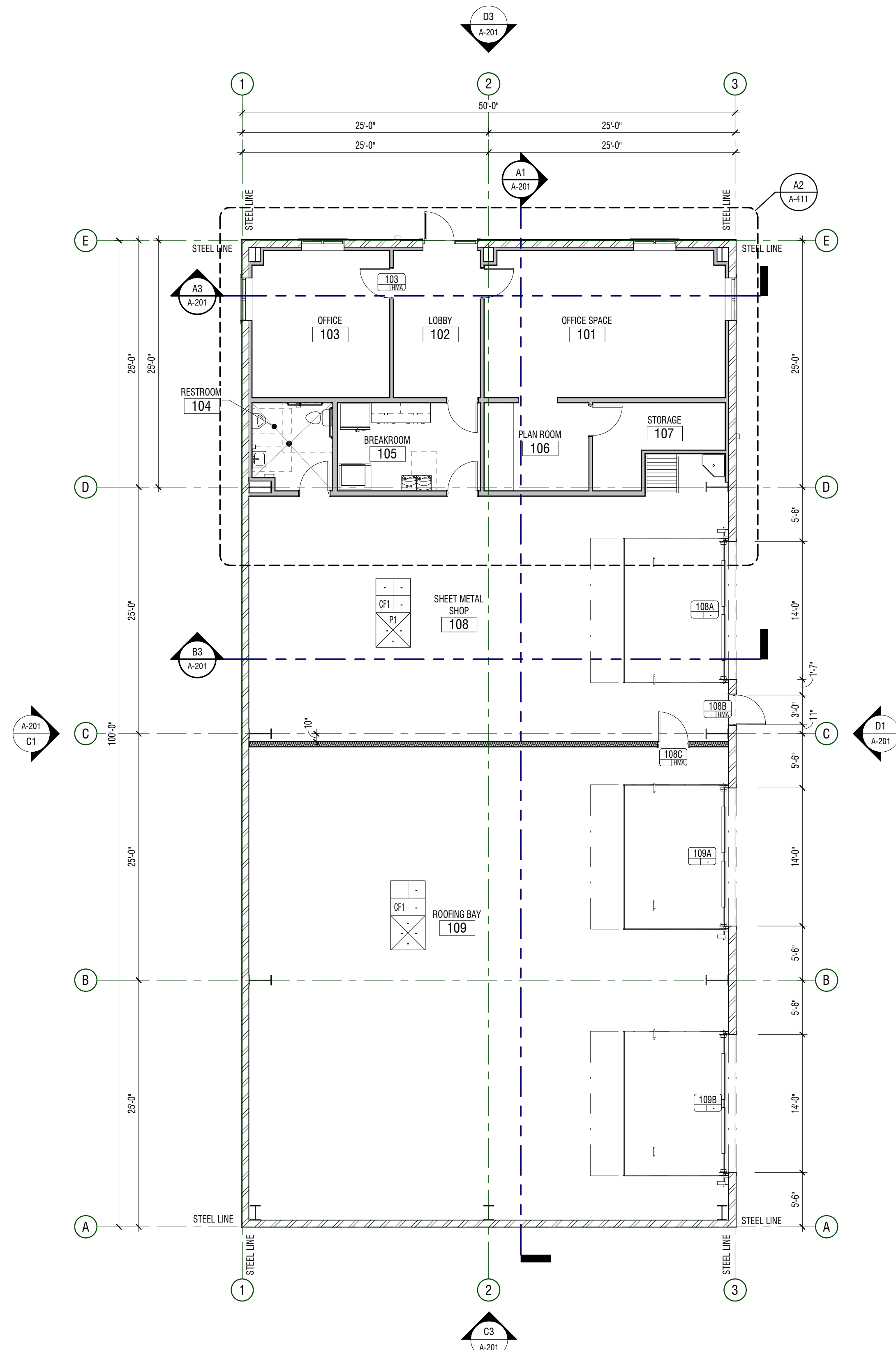
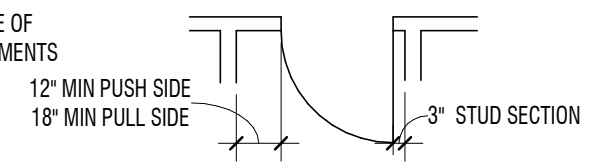
- FINISH TAG $\overline{P17}$ SEE A-691 LEGEND FOR FINISH LEGEND
- CEILING HEIGHT IS B.O. FINISHED CEILING HEIGHT ABOVE FINISHED FLOOR
- MEASUREMENTS SPECIFYING "EQ" = EQUAL LENGTH OR WIDTH TO FILL REMAINDER OF LENGTH REQUIRED
- CEILING WITH NO DIRECT MEASUREMENTS, ASSUME CEILING TO BE EQUALLY DISTANCED ON ALL SIDES OF ROOM
- FIXTURES IN OPEN TO STRUCTURE AREAS ARE DIMENSIONED FROM WALL OR CENTERLINE OF ROOM
- LIGHT FIXTURES WITH NO DIMENSIONS ARE TO BE CENTERED ON ROOM UNLESS OTHERWISE NOTED
- FIXTURES WITHIN A.C.T. TO BE CENTERED IN GRID UNLESS OTHERWISE NOTED
- FIXTURES ON GRID SHALL BE IN LINE WITH GRID CENTER ON CENTER UNLESS OTHERWISE NOTED
- MECHANICAL, ELECTRICAL, SPRINKLER AND DRAIN CONTRACTORS TO COORDINATE PRIOR TO CONSTRUCTION TO AVOID CONFLICTS BETWEEN SYSTEMS
- ROLLER SHADES PER FINISH PLANS

GENERAL NOTES

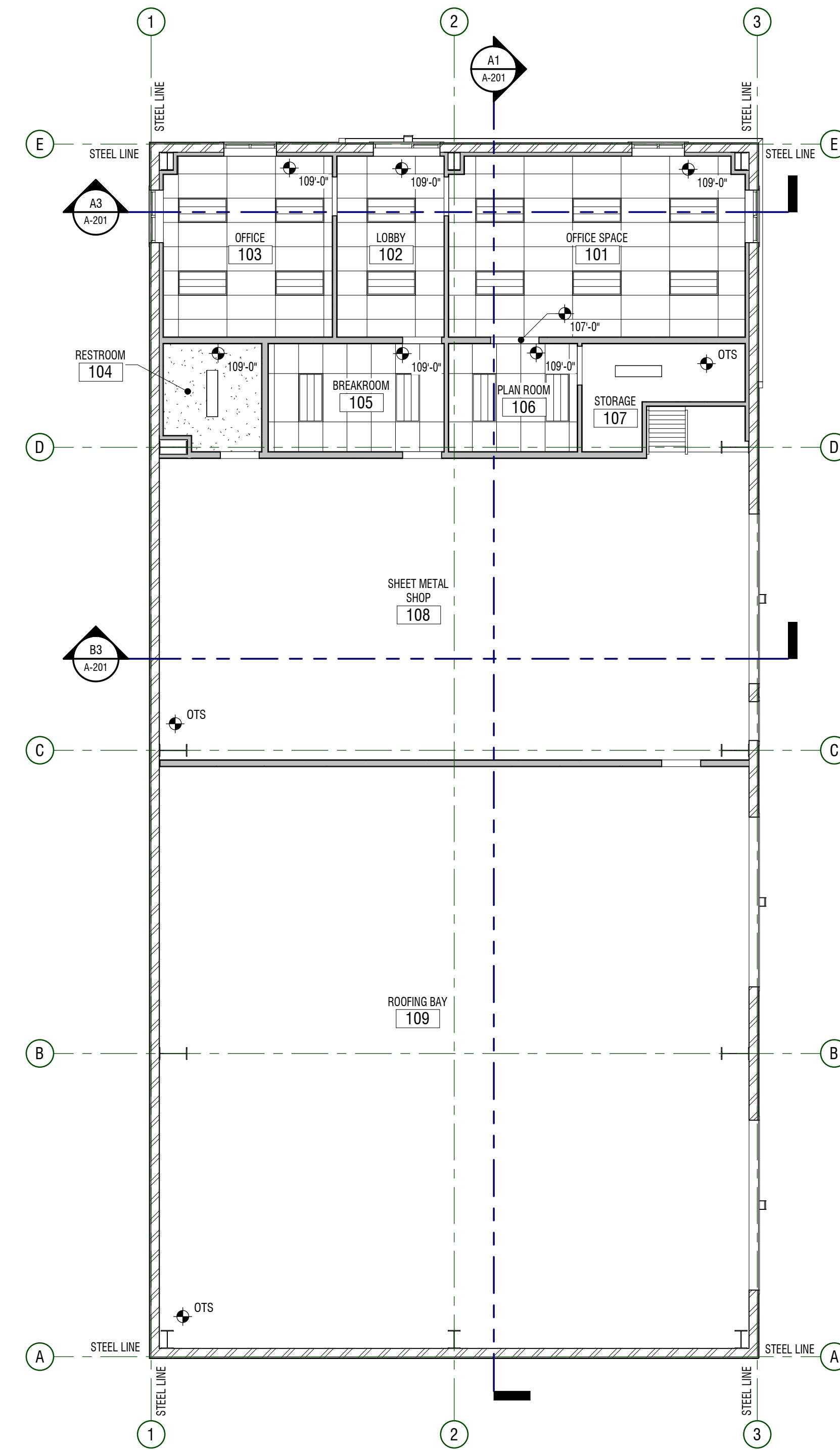
- ROOM FINISH TAGS FOR EACH ROOM REPRESENT TYPICAL FINISHES. SPECIFIC WALLS IN SELECTED AREAS MAY HAVE MULTIPLE FINISHES WHICH WILL BE INDICATED IN INTERIOR ELEVATIONS.
- SEE INTERIOR ELEVATIONS FOR ADDITIONAL FINISH INFORMATION
- SEE REFLECTED CEILING PLANS FOR ADDITIONAL FINISH INFORMATION
- FOR FINISH LEGEND SEE A-691
- CG (CORNER GUARD) SEE SPECIFICATIONS - COLOR TO BE SELECTED BY ARCHITECT
- FLOOR MATERIAL TRANSITIONS WILL OCCUR BELOW DOORS. U.N.O. SEE TYPICAL TRANSITION DETAILS ON SHEET ????
- POLISHED OR SEALED CONCRETE DOES NOT EXTEND UNDER CASEWORK OR MILLWORK
- FLOOR COVERING DOES NOT EXTEND UNDER MILLWORK OR CASEWORK
- FIELD VERIFY ALL DIMENSIONS PRIOR TO FABRICATION OF CASEWORK AND FINISH ASSEMBLIES
- TILED WALLS TO BE TILED UP TO CEILING U.N.O.

GENERAL NOTES

- LEGAL: THE CONSTRUCTION DOCUMENTS FOR THIS PROJECT ARE COMPOSED OF SETS OF DRAWINGS AND SPECIFICATIONS, AND THEREFORE SHALL BE USED AND MAINTAINED IN THEIR ENTIRETY. ANY CONTRACTOR, SUBCONTRACTOR, VENDOR OR PARTY PARTICIPATING IN OR BIDDING ON THIS PROJECT SHALL BE EXPECTED TO PERFORM DUE DILIGENCE TO ENSURE THEIR BID, WORK PERFORMED, AND MATERIALS PROVIDED CONFORMS TO THE INFORMATION PROVIDED WITHIN ANY AND ALL SHEETS OF DRAWINGS AND SPECIFICATIONS, INCLUDING, BUT NOT LIMITED TO, ANY SUBSEQUENT ADDENDA OR CLARIFICATIONS THAT MAY BE ISSUED RELEVANT TO THEIR SCOPE OF WORK. PROJECT SCOPE MAY BE DEFINED WITHIN SPECIFICATIONS AND/OR DRAWINGS.
- ADDITIONALLY, DRAWINGS MAY NOT BE RE-SCALED WHEN PRINTED. WRITTEN DIMENSIONS SHALL HAVE PRECEDENCE, AND LARGER SCALE DRAWINGS SHALL HAVE PRECEDENCE OVER SMALLER SCALE DRAWINGS.
- ANY DEVIATION FROM OR CONFLICT WITHIN THE DRAWINGS AND/OR SPECIFICATIONS, MUST BE SUBMITTED VIA REQUEST FOR INFORMATION (RFI) AND RESPONDED TO BY THE ARCHITECT BEFORE CONTINUING THAT PORTION OF WORK.
- KEYNOTES: THE FIRST TWO NUMBERS REPRESENT THE RELATED CSI MASTERFORMAT DIVISION, THE SECOND SET OF NUMBERS REPRESENTS AN IDENTIFYING MARK VALUE. NOT ALL VALUES MAY BE USED OR OCCUR IN THE DOCUMENT SET.
- ADDITIONALLY, KEYNOTES RETAIN THEIR ASSIGNED VALUE UNIVERSALLY THROUGHOUT THE SET. THE KEYNOTES LISTED BELOW, REPRESENT THE KEYNOTES FOUND AND UTILIZED ON THIS SHEET AND EACH LIST WILL DIFFER RESPECTIVE TO ITS SHEET. THEREFORE, BASED ON ACTUAL KEYNOTES UTILIZED ON A GIVEN SHEET OF DRAWINGS, GAPS IN THE SEQUENCING WILL OCCUR.
- CONTRACTOR SHALL BE FAMILIARIZED WITH THE LAY-OUT OF STRUCTURAL, MECHANICAL, AND ELECTRICAL DRAWINGS. ANY QUESTIONS SHALL BE SUBMITTED VIA REQUEST FOR INFORMATION (RFI).
- ALL INTERIOR DIMENSIONS ARE TO/FROM FACE OF STUD / MASONRY. ALL EXTERIOR DIMENSIONS ARE TO/FROM FACE OF GRID FOUNDATION. DIMENSIONS MARKED 'CLEAR' OR 'CLR' ARE FROM FACE OF FINISH TO FACE OF FINISH AND SHALL BE MAINTAINED AND CANNOT BE FIELD ADJUSTED WITHOUT PRIOR APPROVAL OF THE ARCHITECT.
- MIN CLEARANCE REQUIRED ON LATCH SIDE OF DOORS SHALL CONFORM TO ADA REQUIREMENTS
- HINGE SIDE OF DOORS AT PERPENDICULAR WALLS TO HAVE 3" STUD SECTION U.N.O.
- BLOCKING TO BE PROVIDED AT SHELVING, CASEWORK, RAILINGS, LIGHTFIXTURE, COUNTERTOP, ACCESSORIES AND MORE
- PROVIDE CONTINUOUS WOOD BLOCKING OR METAL STRAPPING FOR ANY WALL MOUNTED OR SUPPORTED ITEMS. PROVIDE FIRE RATED BLOCKING FOR ANY FIRE RATED PARTITIONS
- WALL TYPES SHOWN AS $\overline{[W4]}$ ARE SHOWN ON SHEET A-511. FOR OTHER WALLS SEE BUILDING AND WALL SECTIONS. FOR STANDARD STEEL STUD WALL DETAILS SEE A-512
- AT RECESSED CABINETS (IE: ELECTRICAL PANELS, FEC AND ETC) IN FIRE RATED WALLS PROVIDE 5 SIDE COVERAGE OF GYP BD IN STUD WALLS TO MAINTAIN INTEGRITY OF FIRE WALL RATING
- ALIGN FURRED WALLS AND STUD WALL FINISH FACE TYPICAL. U.N.O.
- ADA RESTROOMS MUST COMPLY WITH ADA WATER CLOSET MEASUREMENTS ON SHEET 2-???
- SEE CODE PLAN FOR LOCATION SMOKE AND FIRE RATED PARTITIONS
- SLOPE ALL SETTING BEDS TO FLOOR DRAINS U.N.O.



A1 PLAN - DIMENSION, ANNOTATION, FINISH
1/8" = 1'-0" MAIN FLOOR



A3 PLAN - REFLECTED CEILING
1/8" = 1'-0" MAIN FLOOR



LEGEND

MATERIALS

PAINTED GYPSUM BOARD CEILINGS TYPICAL. U.N.O.

SYMBOLS

- LIGHTING FIXTURES:
SURFACE MOUNTED FIXTURES
- RECESSED FIXTURE
- TROFFER LIGHT
- SENSORS/SIGNS/ELEC. DATA:
EXIT SIGN - SEE ELECTRICAL DRAWINGS
- OCCUPANCY SENSOR
- AIR GRILLES:
EXHAUST
- SUPPLY / FRESH
- RETURN / RELIEF
- CEILING MILLWORK
- FLOOR BASE
- WALL
- ROOM FINISH TAG
- FINISH TAG - INDICATES SPECIFIC APPLIED FINISH
- INDICATES FINISH IS APPLIED TO AREA BETWEEN ARROWS
- INDICATES FINISH IS APPLIED TO FACE OF SURFACE(S)
- RS INDICATES A MANUAL ROLLER SHADE.
- INDICATES SIGNAGE LOCATION

ISLAND HEIGHTS CONSTRUCTION

MARK: _____ DATE: _____ DESCRIPTION: _____

PROJECT #: 420744
DRAWN BY: NIELSON
CHECKED BY: WILLIAMS
ISSUED: XXXXXXXX

NOT FOR CONSTRUCTION

PLANS - MAIN FLOOR

A-111

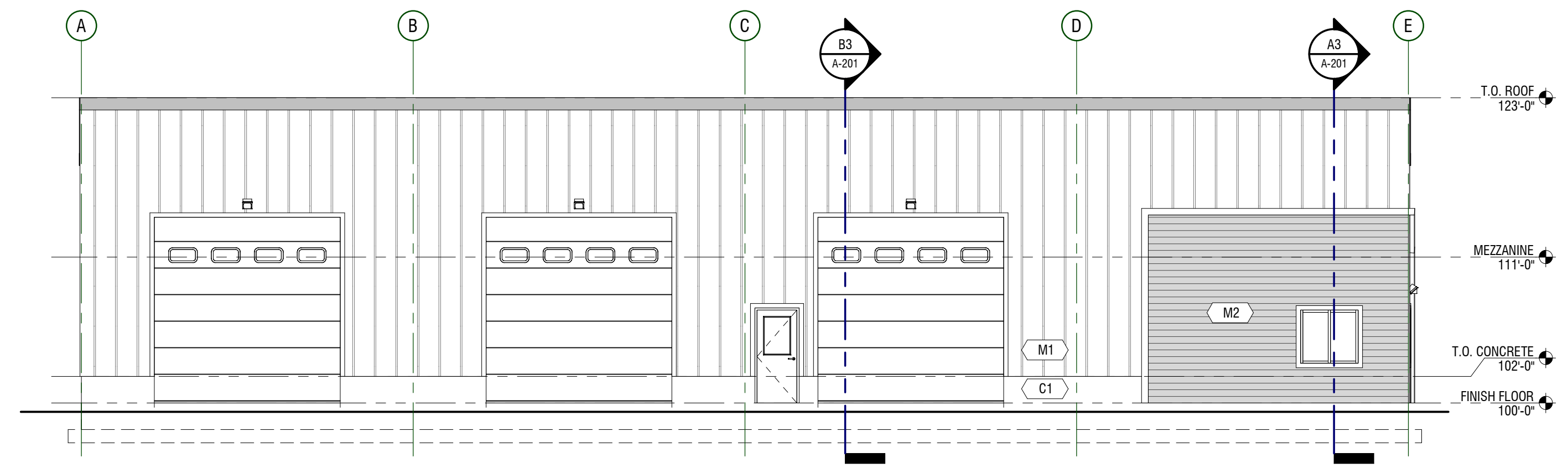
design west architects
LOGAN, UT 84321
255 SOUTH 300 WEST
SALT LAKE CITY, UT 84103

260 W 3700 N, HYDE PARK, UT 84318-0505
CASEY RINGER - OWNER

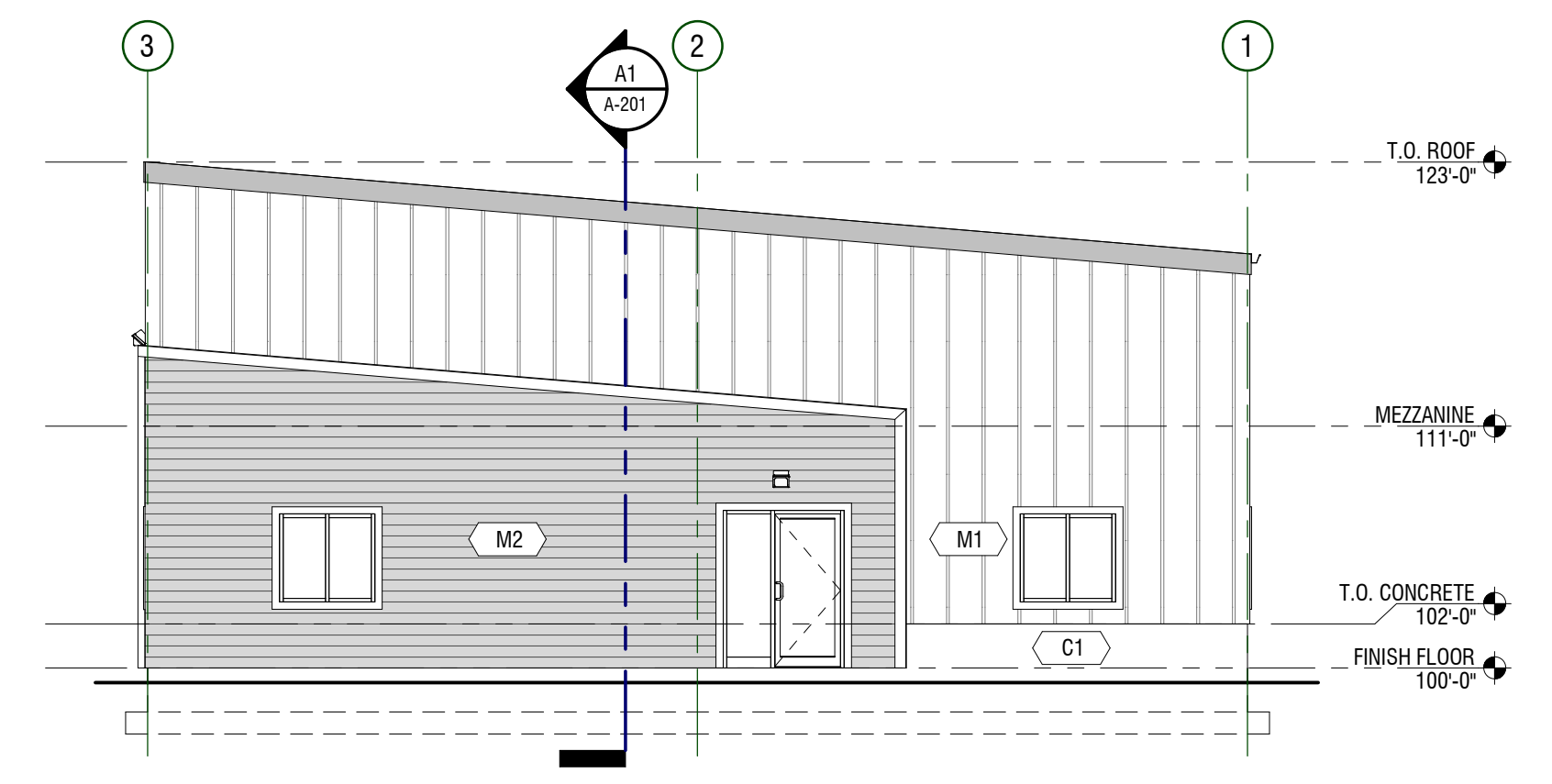
1/12/2020 12:43:08 PM C:\Users\mward\Documents\2024\ISLAND HEIGHTS CONSTRUCTION\T_raper_nrk

KEYNOTES

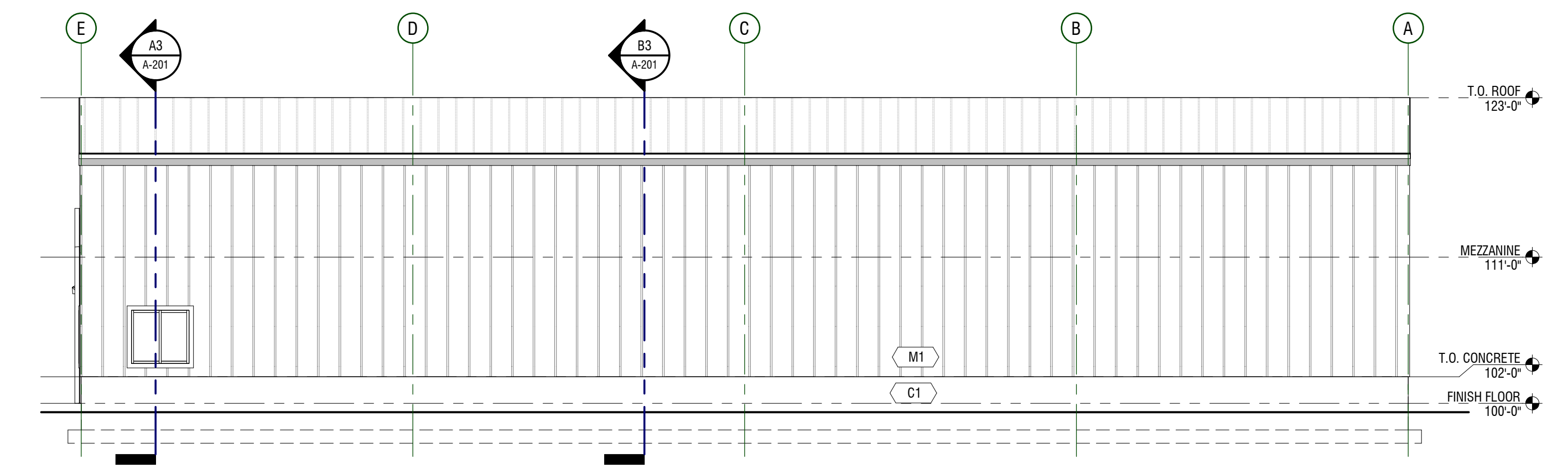
MARK	DESCRIPTION
C1	CAST-IN-PLACE CONCRETE WALL
M1	METAL WALL PANEL - BLUE
M2	METAL WALL PANEL - LIGHT GRAY



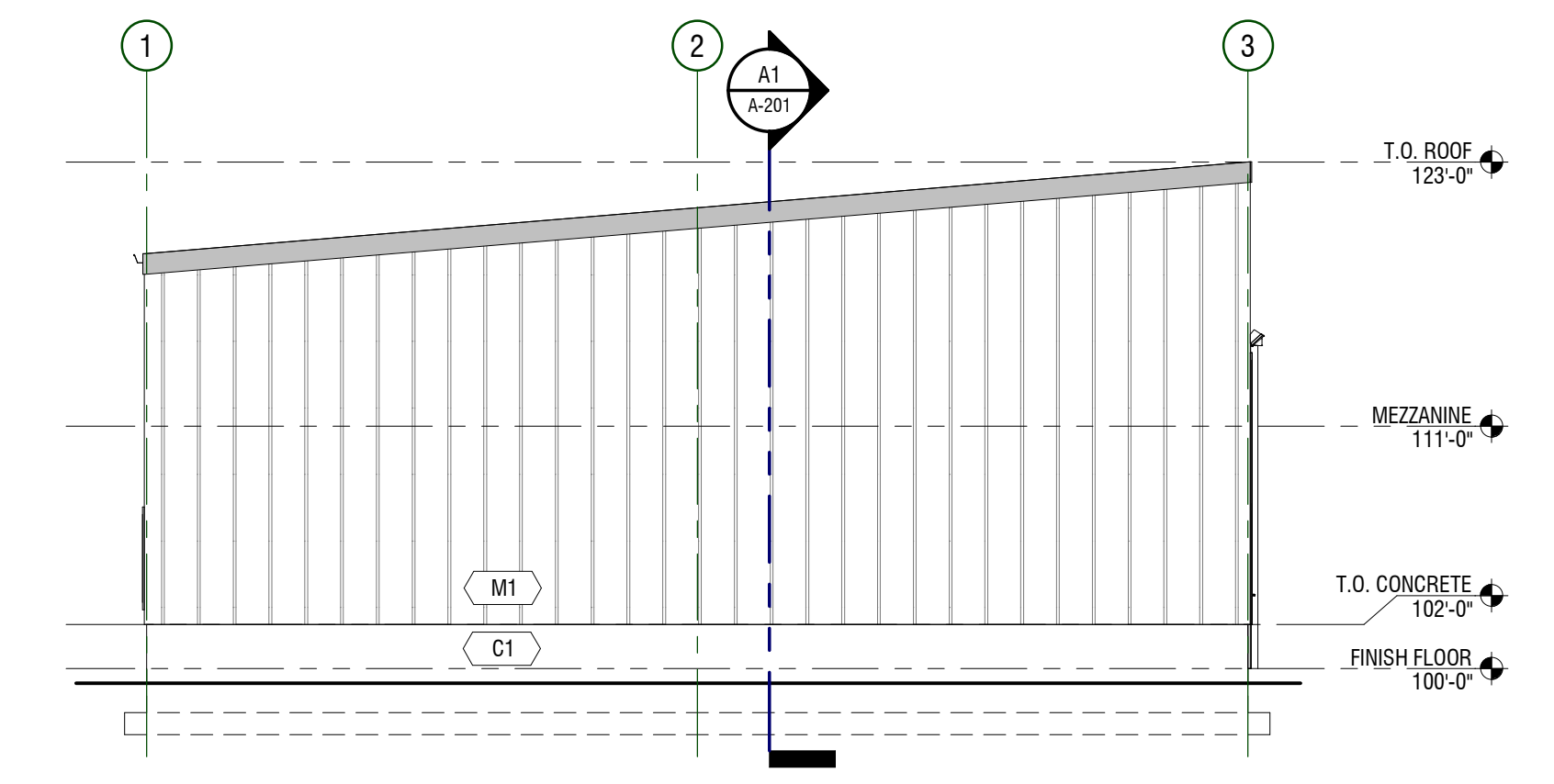
D1 ELEVATION
 1/8" = 1'-0" WEST



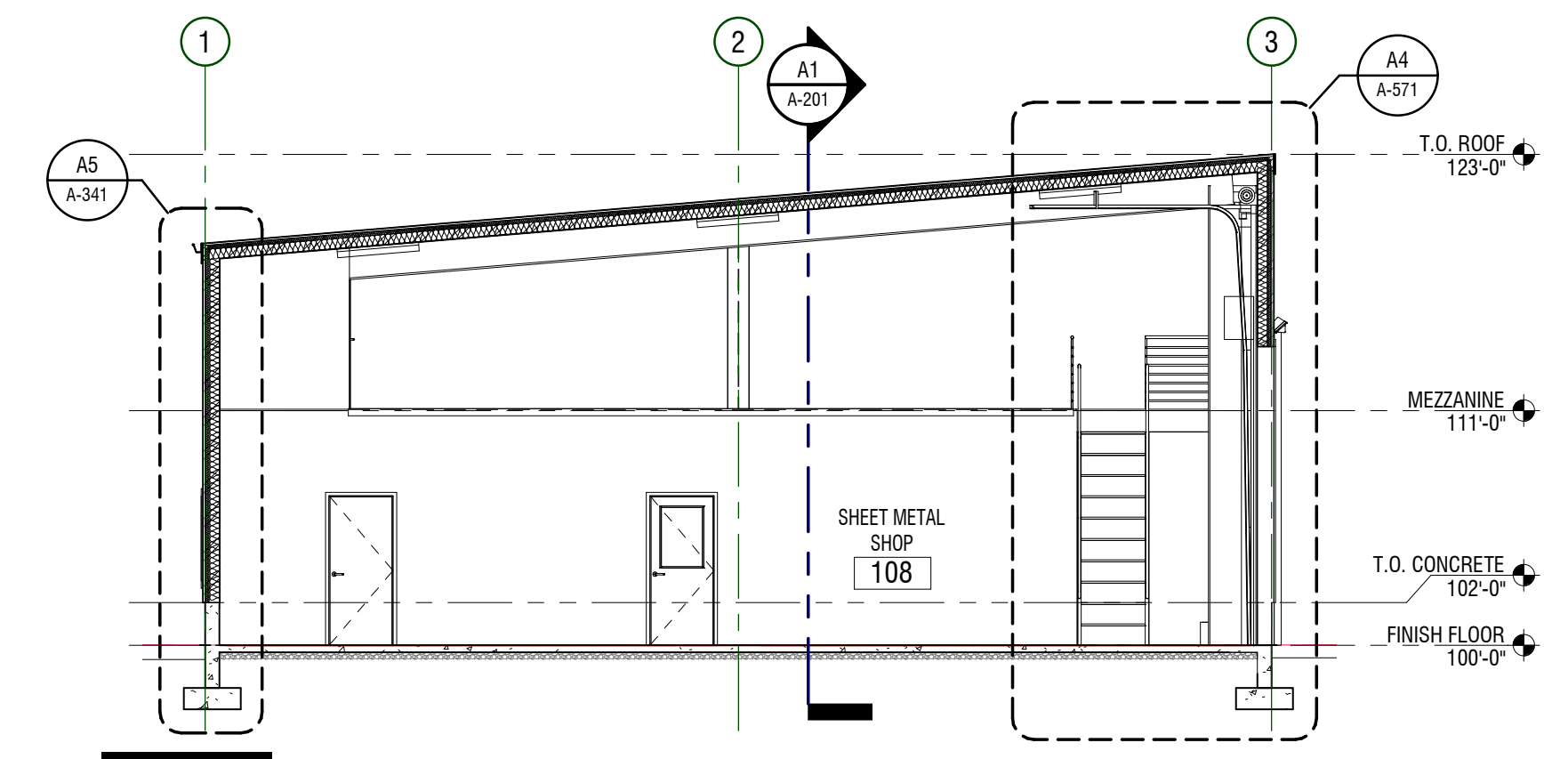
D3 ELEVATION
 1/8" = 1'-0" SOUTH



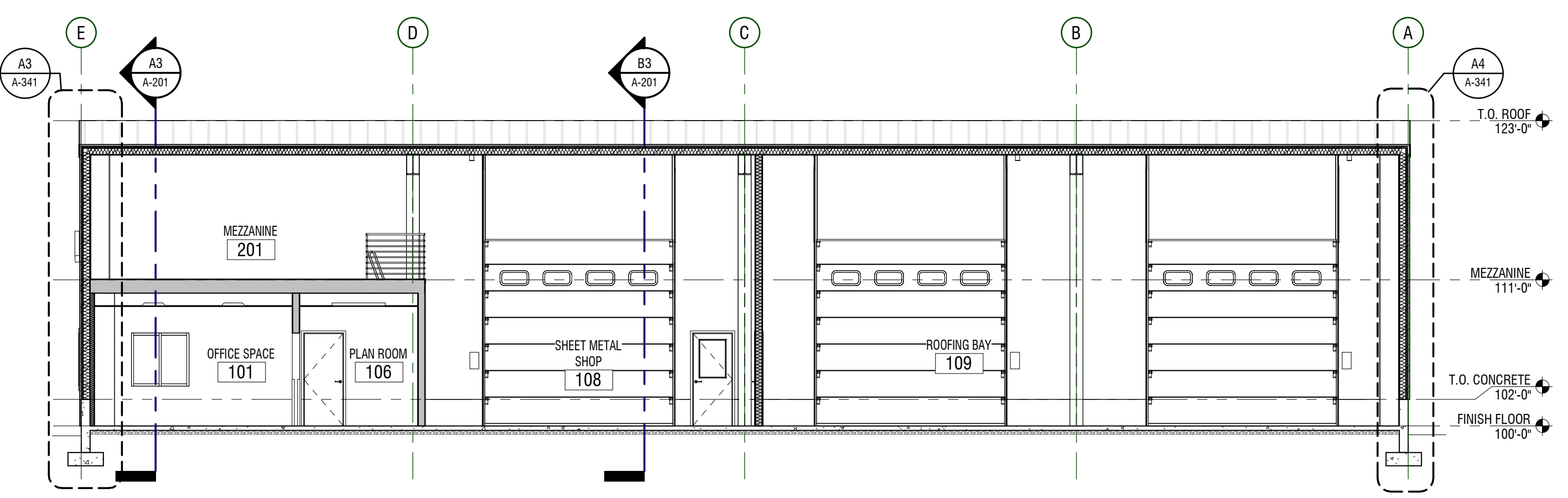
C1 ELEVATION
 1/8" = 1'-0" EAST



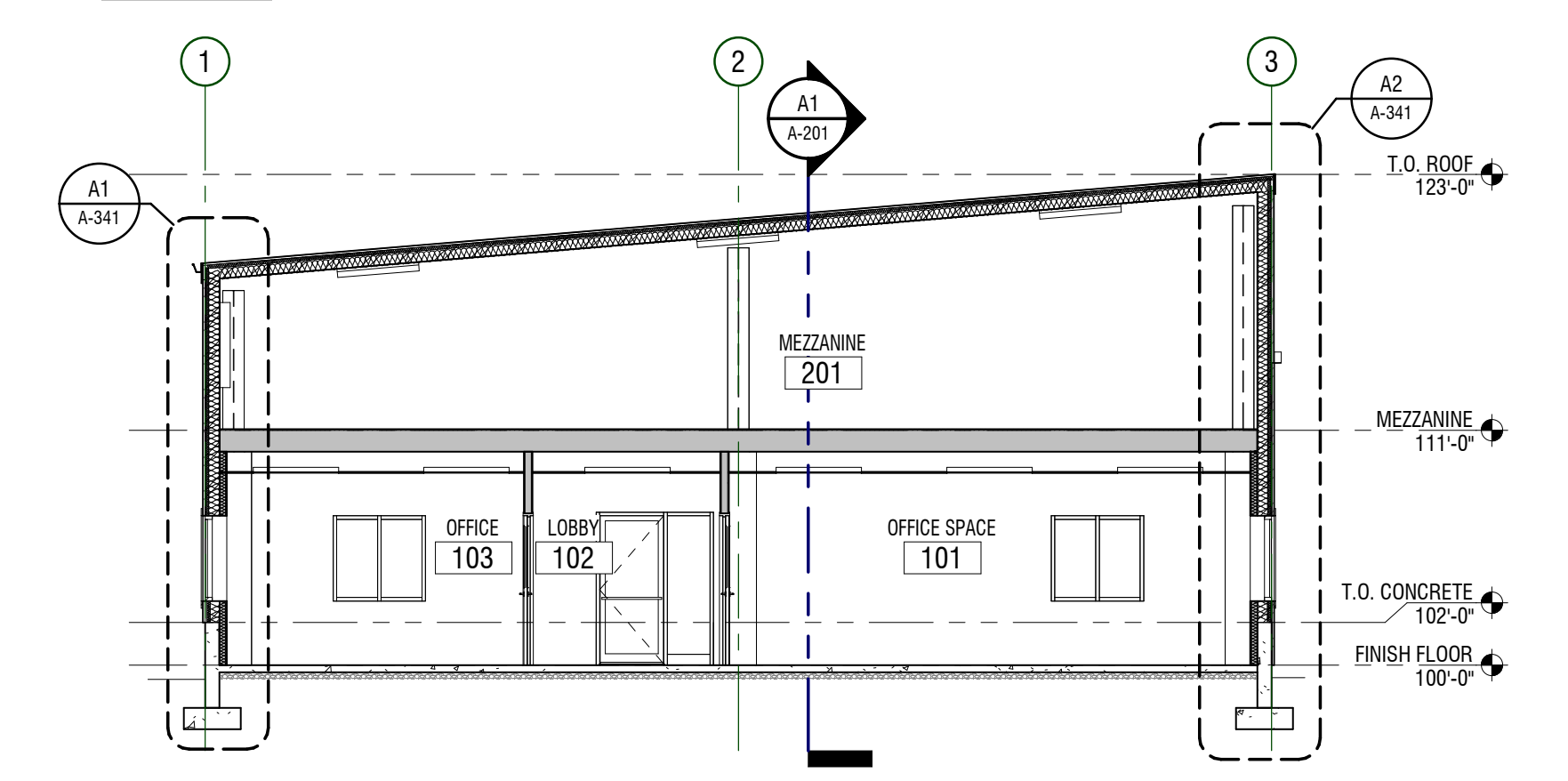
C3 ELEVATION
 1/8" = 1'-0" NORTH



B3 BUILDING SECTION
 1/8" = 1'-0"



A1 BUILDING SECTION
 1/8" = 1'-0"



A3 BUILDING SECTION
 1/8" = 1'-0"

MARK: _____ DATE: _____ DESCRIPTION: _____

PROJECT #: 420744
 DRAWN BY: NIELSON
 CHECKED BY: WILLIAMS
 ISSUED: XXXXXXXX

NOT FOR CONSTRUCTION

EXTERIOR ELEVATIONS & BUILDING SECTIONS

A-201

1/25/2020 12:43:14 PM C:\Users\jwest\Documents\420744-ISLAND HEIGHTS CONSTRUCTION\Detail_A-531.rvt

A

B

C

D

1

2

3

4

5

NOT FOR CONSTRUCTION

BUILDING DETAILS

A-531

PROJECT #: 420744
DRAWN BY: Author
CHECKED BY: Checker
ISSUED: XXXX.XXXX

MARK	DATE	DESCRIPTION

ISLAND HEIGHTS CONSTRUCTION
260 W 3700 N, HYDE PARK, UT 84318-0505
CASEY FINGER - OWNER

design west | architects
255 SOUTH 300 WEST
795 NORTH 400 WEST
LOGAN UT 84321
SALT LAKE CITY UT 84103

A

B

C

D

1

2

3

4

5

NOT FOR CONSTRUCTION

ROOF DETAILS

A-561

PROJECT #: 420744
 DRAWN BY: Author
 CHECKED BY: Checker
 ISSUED: XXXX.XXXX

MARK	DATE	DESCRIPTION

ISLAND HEIGHTS CONSTRUCTION
 260 W 3700 N, HYDE PARK, UT 84318-0505
 CASEY FINGER - OWNER

design west | architects
 255 SOUTH 300 WEST
 795 NORTH 400 WEST
 LOGAN UT 84321
 SALT LAKE CITY UT 84103

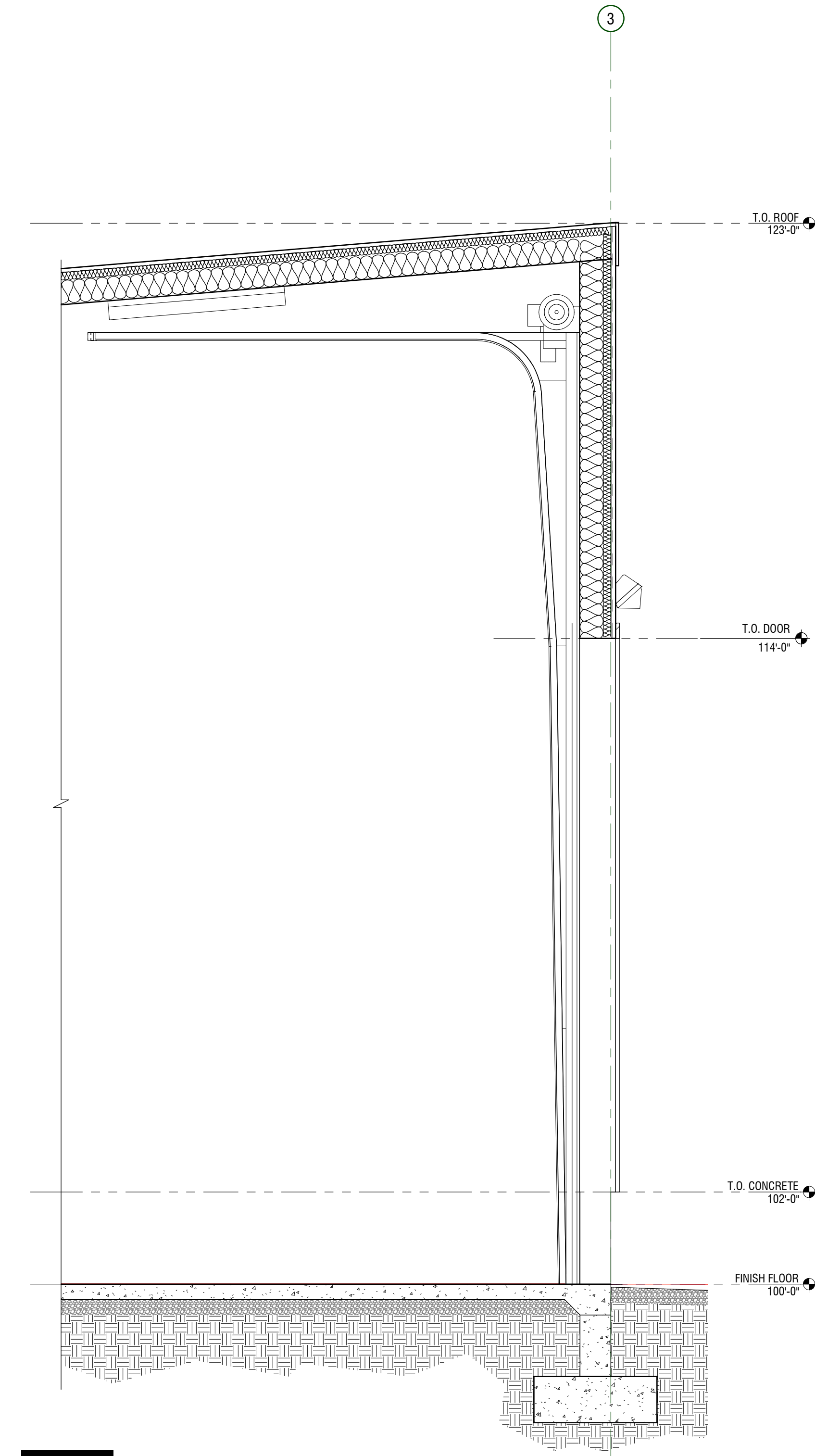
1/25/2020 12:43:14 PM C:\Users\jwest\Documents\2018-18-Island Heights Construction_Temp_A.rvt

D

C

B

A



A4 SECTION - OVERHEAD DOOR
 1/2" = 1'-0"

NOT FOR CONSTRUCTION

ISLAND HEIGHTS CONSTRUCTION

260 W 3700 N, HYDE PARK, UT 84318-0505
 CASEY FINGER - OWNER

MARK	DATE	DESCRIPTION

PROJECT #: 420744
 DRAWN BY: NIELSON
 CHECKED BY: WILLIAMS
 ISSUED: XXXXXX

1/25/2020 12:43:14 PM C:\Users\mwest\Documents\420744-ISLAND HEIGHTS CONSTRUCTION_Temp.rvt

A

B

C

D

1

2

3

4

5

NOT FOR CONSTRUCTION

CEILING DETAILS

A-581

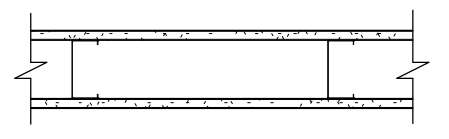
PROJECT #: 420744
 DRAWN BY: Author
 CHECKED BY: Checker
 ISSUED: XXXX.XXXX


MARK	DATE	DESCRIPTION

ISLAND HEIGHTS CONSTRUCTION
 260 W 3700 N, HYDE PARK, UT 84318-0505
 CASEY FINGER - OWNER

design west | architects
 255 SOUTH 300 WEST
 795 NORTH 400 WEST
 LOGAN UT 84321
 SALT LAKE CITY UT 84103

WALL TYPES

MARK	ASSEMBLY	FIRE RATING
S3A	 <p>5/8" TYPE X GYPSUM BOARD 3-5/8" METAL STUD FRAMING @ 16" O.C. 5/8" TYPE X GYPSUM BOARD</p>	N/A TESTING SOURCE: N/A
DESCRIPTION: N/A		STC RATING N/A TESTING SOURCE: N/A

MARK	ASSEMBLY	FIRE RATING
S6A	 <p>5/8" TYPE X GYPSUM BOARD 6" METAL STUD FRAMING @ 16" O.C. 5/8" TYPE X GYPSUM BOARD</p>	N/A TESTING SOURCE: N/A
DESCRIPTION: N/A		STC RATING N/A TESTING SOURCE: N/A

1/25/2020 12:43:13 PM C:\Users\mtd\Documents\420744-ISLAND HEIGHTS CONSTRUCTION_Temp.rvt

D

C

B

A

1

2

3

4

5

NOT FOR CONSTRUCTION

WALL TYPES

A-611

MARK: _____
DATE: _____
DESCRIPTION: _____
PROJECT #: 420744
DRAWN BY: XX
CHECKED BY: XX
ISSUED: XXXXXX

ISLAND HEIGHTS CONSTRUCTION
260 W 3700 N, HYDE PARK, UT 84318-0505
CASEY FINGER - OWNER

design west | architects
LOGAN UT 84321
SALT LAKE CITY UT 84103
255 SOUTH 300 WEST
795 NORTH 400 WEST

© COPYRIGHT DESIGN WEST ARCHITECTS 2020

DOOR SCHEDULE

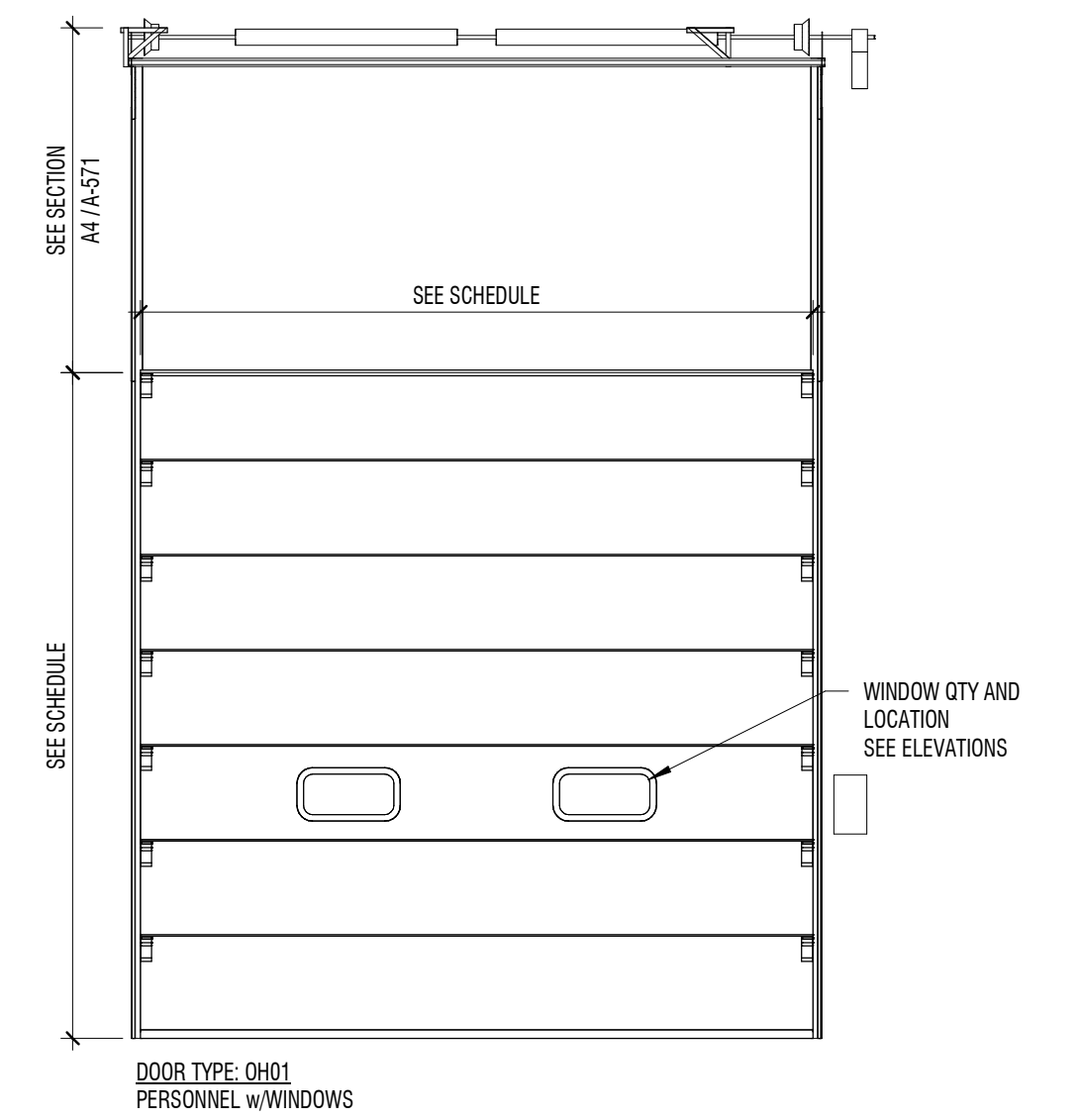
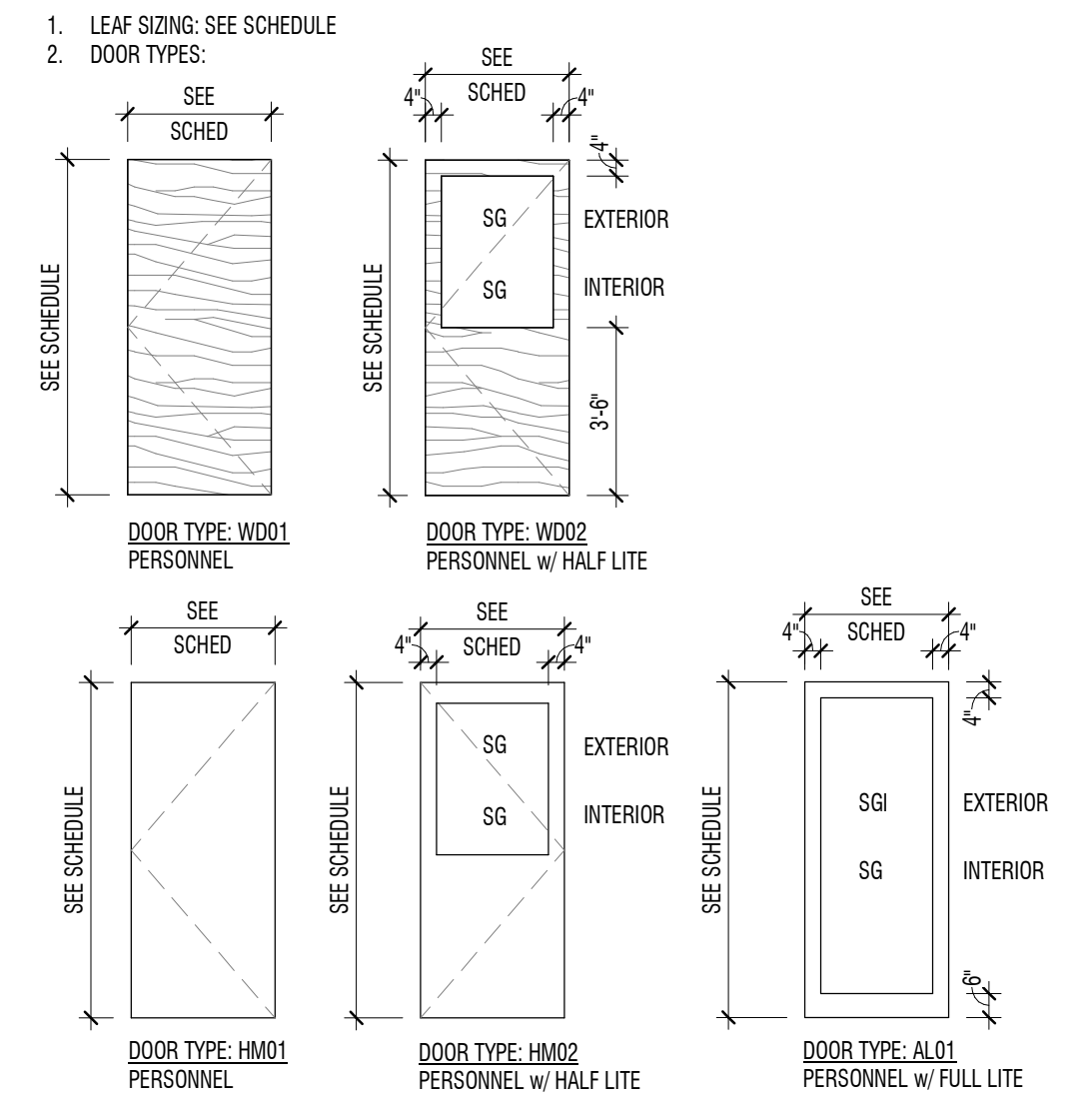
MARK	LEAF SIZING (1)			DOOR TYPE (2)	CONSTRUCTION (3)	FINISH (4)	GLAZING (5)	RATING (6)	FRAME TYPE (7)	DETAIL (8)			HARDWARE (9)	NOTES (10)
	W	H	D							HEAD	JAMB	SILL		
101	3'-0"	7'-0"	1 3/4"	WDO2	WD	P2	SG		HMA					
103	3'-0"	7'-0"	1 3/4"	WDO2	WD	P2	SG		HMA					
104	3'-0"	7'-0"	1 3/4"	HM01	HM	P2	-		HMA					
105A	3'-0"	7'-0"	1 3/4"	WDO1	WD	P2	-		HMA					
105B	3'-0"	7'-0"	1 3/4"	HM02	HM	P2	SG		HMA					
107	3'-0"	7'-0"	1 3/4"	WDO1	WD	P2	-		HMA					
108	3'-0"	7'-0"	1 3/4"	AL01	AL	P3	SGI		B					
108A	14'-0"	14'-0"	3 19/128"	OH01	PER MANUF	BY ARCH	PER MANUF		-					
108B	3'-0"	7'-0"	1 3/4"	HM02	HM	P3	SGI		HMA					
108C	3'-0"	7'-0"	1 3/4"	HM01	HM	P2	-		HMA					
109A	14'-0"	14'-0"	3 19/128"	OH01	PER MANUF	BY ARCH	PER MANUF		-					
109B	14'-0"	14'-0"	3 19/128"	OH01	PER MANUF	BY ARCH	PER MANUF		-					

GENERAL NOTES

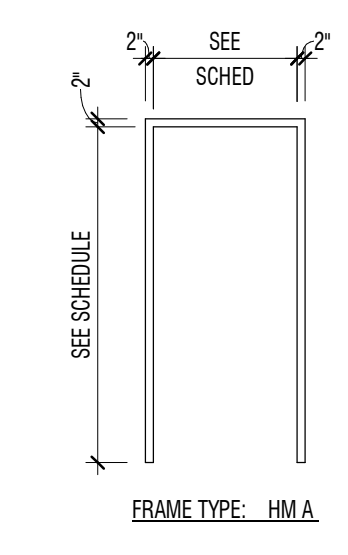
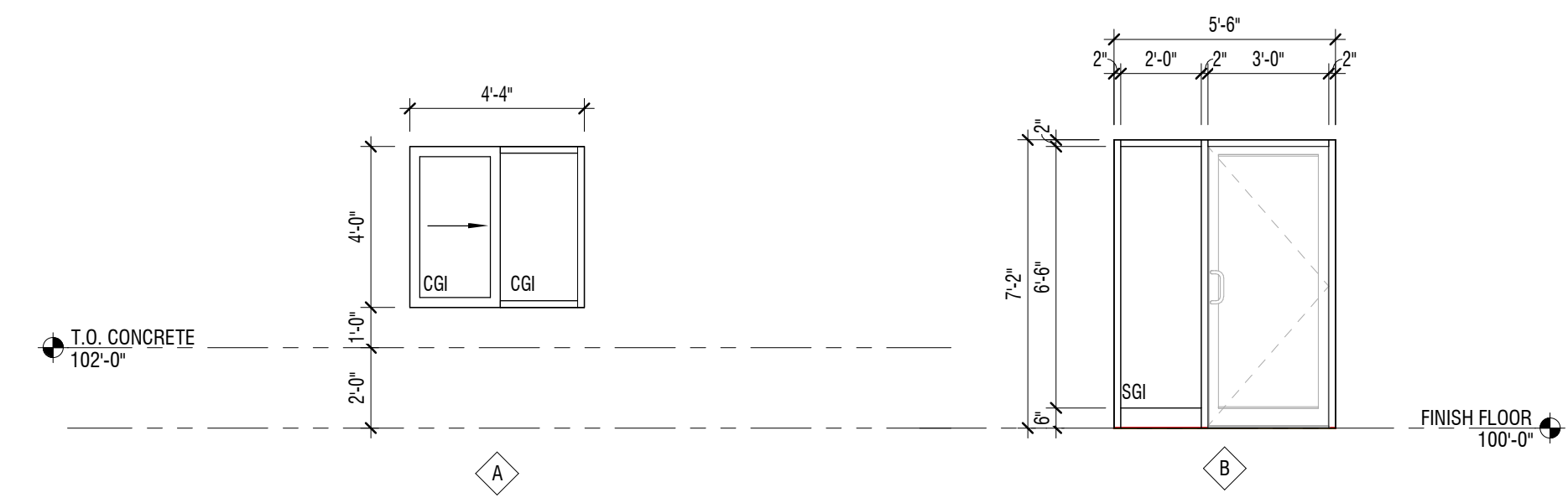
- PROVIDE SEALANT AT JOINTS AT DISSIMILAR MATERIAL CONNECTIONS. ISOLATE DISSIMILAR METALS.
- ALL DIMENSIONS FOR DOOR AND WINDOW OPENINGS TO BE FIELD VERIFIED PRIOR TO MANUFACTURING AND INSTALLATION.
- ALL WINDOWS AND TRANSOMS THAT OCCUR IN RATED CORRIDOR WALL TO BE RATED 45 MIN

SCHEDULE NOTES

- IF SCHEDULE FIELD SHOWS A HYPHEN (-) OR IS BLANK, THERE ARE NO ITEMS APPLICABLE OR IS DETERMINED BY MANUFACTURER.
- SWING LINES SHOWN BELOW ARE REPRESENTATIONAL AND DO NOT INDICATE ACTUAL SWING. SEE PLANS FOR INDIVIDUAL SWINGS.



- CONSTRUCTION:
 - GL GLASS
 - AL ALUMINUM
 - HM HOLLOW METAL, INSULATED
 - HM HOLLOW METAL
 - SC SOLID CORE
- FINISH: SEE DOOR FINISHES ON SHEET A-691
- GLAZING: (DOOR AND WINDOW)
 - SG SAFETY GLASS (TEMPERED OR LAMINATED)
 - SGI SAFETY GLASS INSULATED, LOW E
 - CGI CLEAR FLOAT GLASS
 - CGI CLEAR FLOAT GLASS INSULATED - LOW E
 - SP SPANDREL PANEL
- RATINGS: 20, 45, 60 AND ETC. INDICATES FIRE RATING
NOTE: ALL FIRE RATED DOORS SHALL BE AUTOMATIC CLOSING OR SELF-CLOSING AS PROVIDED IN THE IBC. IN ADDITION SEE THE IBC FOR SPECIAL PROVISIONS RELATING TO DOORS.
- FRAME TYPE: (NUMBER(S) INDICATE(S) FRAME TYPE(S) SHOWN)



- DETAILS: (REFER TO SHEETS INDICATED FOR DOOR AND WINDOW DETAILS)
- HARDWARE: (GROUP #, SEE SPECIFICATIONS FOR HARDWARE GROUPS)
- NOTES: A:

MARK	DATE	DESCRIPTION

PROJECT #: 420744
DRAWN BY: NIELSON
CHECKED BY: WILLIAMS
ISSUED: XXXXXXXX

NOT FOR CONSTRUCTION

DOOR/FRAME SCHEDULE & TYPE NOTES

A-671

FINISH SCHEDULE

CARPET

MARK: C1
 TYPE:
 MANUFACTURER:
 COLLECTION:
 SERIES:
 COLOR:
 SIZE:
 INSTALL:
 NOTES:

RESILIENT FLOORING

MARK: RF1
 TYPE:
 MANUFACTURER:
 COLLECTION:
 SERIES:
 COLOR:
 SIZE:
 INSTALL:
 NOTES:

TILE

MARK: T1
 MANUFACTURER:
 COLLECTION:
 SERIES:
 COLOR:
 SIZE:
 INSTALL:
 GROUT:
 NOTES:

CONCRETE FINISH

MARK: CF1
 TYPE: SEALED CONCRETE
 MANUFACTURE:
 COLOR: SEE SPECIFICATIONS
 SHEEN:
 NOTES: -

TRANSITIONS

MARK:
 TYPE:
 MANUFACTURER:
 COLOR:
 MODEL:
 LOCATION:
 NOTES:

BASE

MARK: B1
 TYPE: RUBBER BASE
 MANUFACTURER: MANNINGTON BURKE
 COLOR: 082, ORE
 SIZE: 4" COVE
 STYLE: TP
 NOTES:

CEILING

MARK: A1
 TYPE: ACOUSTICAL CEILING TILE
 MANUFACTURER: ARMSTRONG
 MODEL:
 SIZE: 24"x48"
 COLOR: WHITE
 NOTES: -

PAINT

MARK: P1	P2
MANUFACTURER: SHERWIN WILLIAMS	SHERWIN WILLIAMS
COLOR: SW 7005 - PURE WHITE	SW7008 - ALABASTER
SHEEN: SATIN	SEMI-GLOSS
NOTES:	DOORS AND TRIM

EPOXY PAINT

MARK:
 TYPE:
 MANUFACTURER:
 COLOR:
 SHEEN:
 NOTES:

WALL COVERINGS

MARK:
 TYPE:
 MANUFACTURER:
 STYLE:
 COLOR:
 NOTES:

MILLWORK FINISHES

MARK: MF1
 TYPE: P-LAM
 MANUFACTURER: WILSONART
 COLOR: PINNACLE WALNUT - 7992
 FINISH: 12 SOFT GRAIN
 NOTES:

MILLWORK HARDWARE

MARK: MH1
 MANUFACTURER: ALNO
 COLOR: MATTE BLACK
 STYLE: AL-AS15-MB
 SIZE: 5" CTC
 NOTES:

COUNTER TOPS

MARK: CT1
 TYPE: P-LAM
 MANUFACTURER: WILSONART
 COLOR: 4928 BLACK ALICANTE
 FINISH: 60 MATTE
 EDGE: EASED EDGE
 BACKSPLASH: CT1 4"
 NOTES: -

MISCELLANEOUS

MARK:
 TYPE:
 MANUFACTURER:
 MODEL:
 COLOR:
 SIZE:
 INSTALL:
 NOTES:

WINDOW COVERINGS

MARK:
 TYPE:
 MANUFACTURER:
 SIZE:
 COLOR:
 NOTES:

FINISH COMBINATIONS

WALL COMBINATIONS

MARK: 1A
 DESCRIPTION:

FLOOR COMBINATIONS

MARK: 2A
 DESCRIPTION:

MILLWORK GROUPING

MARK: 3A
 UPPER CABINETS: MF1
 BACKSPLASH: CT1
 COUNTERTOP: CT1
 FRONT EDGE STYLE: EASED EDGE
 BASE CABINETS: MF1
 HARDWARE: MH1
 FRAME CONSTRUCTION: SEE SPECIFICATIONS
 DOOR INTERFACE STYLE: FULL OVERLAY, FLAT PANEL, VERTICAL GRAIN
 NOTES: -

DOOR FINISHES

MARK: 4A
 DOOR FINISH: P2
 JAMB FINISH: P2
 HARDWARE COLOR: STAINLESS STEEL
 NOTES:

DESCRIPTION:

DATE:

MARK:

PROJECT #: 420744

DRAWN BY: NIELSON

CHECKED BY: WILLIAMS

ISSUED: XXXXXXXX

NOT FOR CONSTRUCTION

D

C

B

A