



**CENTRAL
WASATCH
COMMISSION**

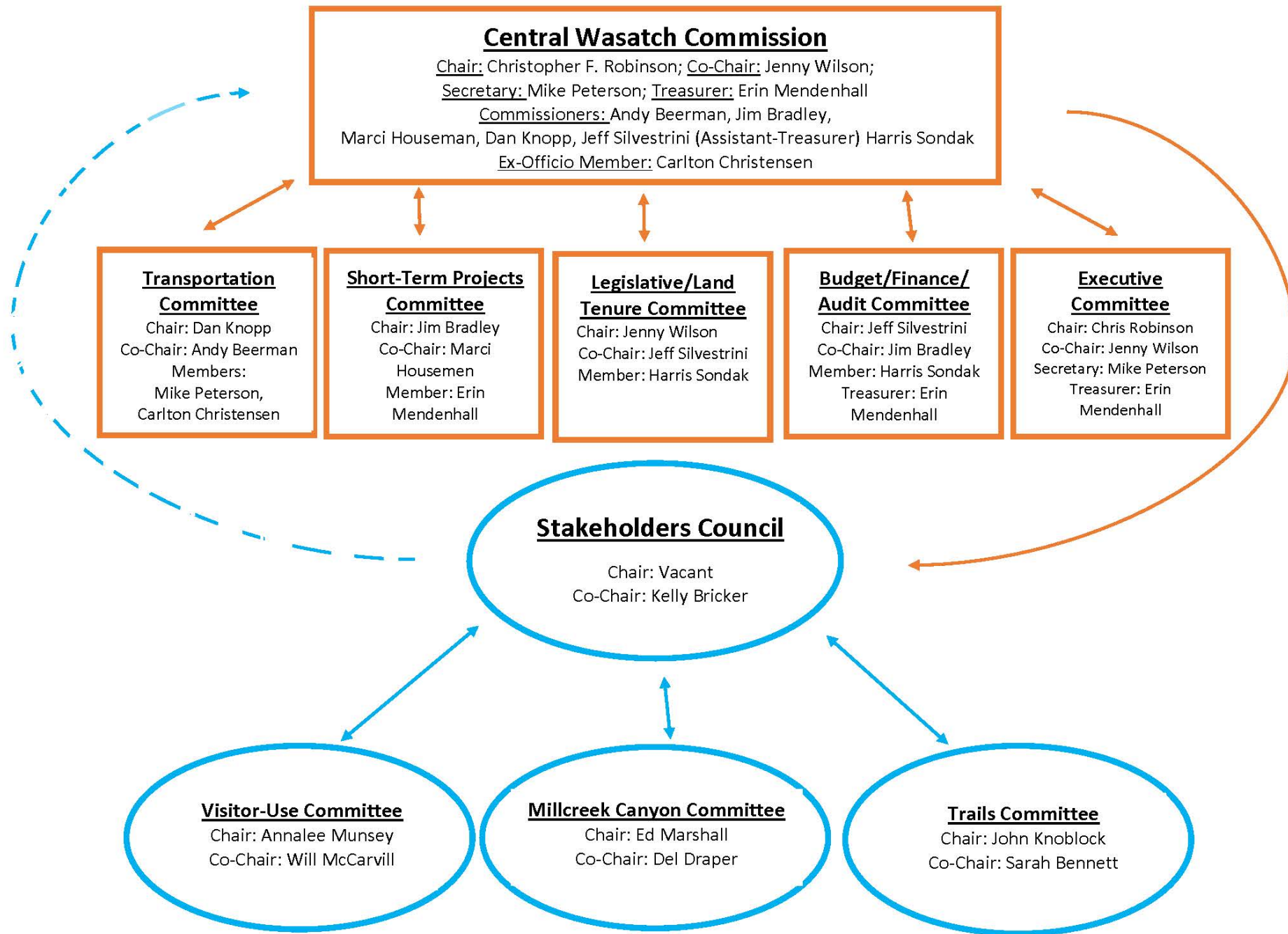
Central Wasatch
Commission
2019/2020
Annual Report

October 5, 2020





Member Jurisdictions

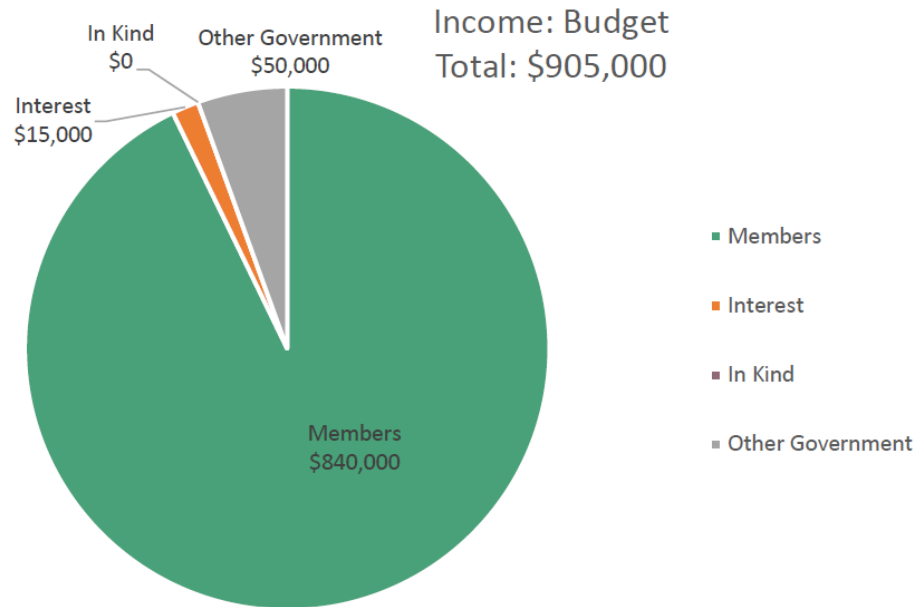


2019/2020 Central Wasatch Commission Finance and Budget Information

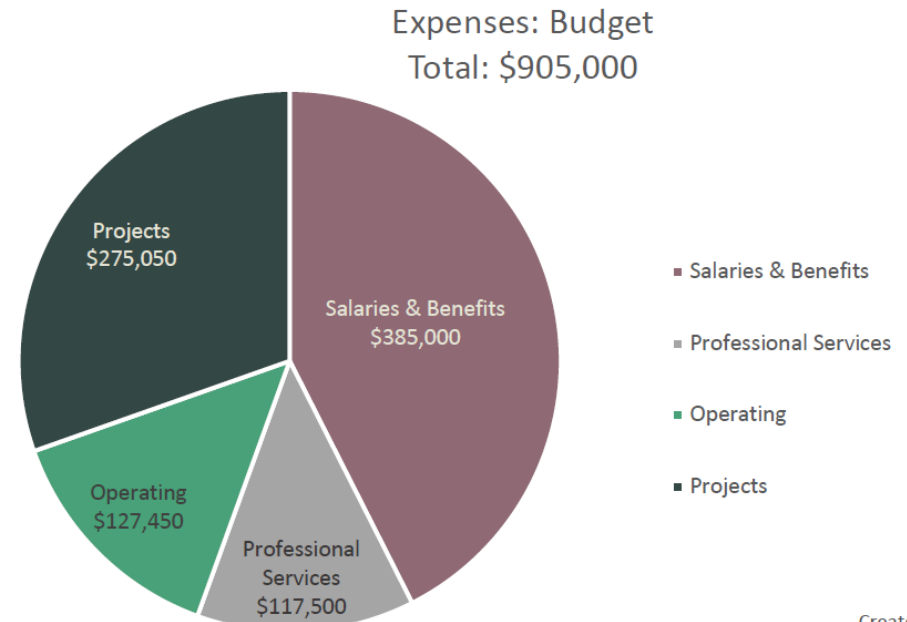
The CWC developed a financial services/operational review work plan as a guide leading to a more complete and comprehensive understanding of current and historical financial information. The plan includes:

1. Review of all accounting processes in effect since CWC inception in 2017
2. Reconciliation of processes to CWC bylaws and resolutions
3. Implementation of accounting operational areas to be brought in house
4. Review of banking processes and movement to ach/direct deposit for all vendors
5. Update of the monthly financial statements format and narrative Review of all employee contracts for compliance of all items
6. Development of a draft Employee Handbook on its way to Board for review
7. Completion of Utah Retirement System compliance audit
8. Establishment of CWC Investment Policy approved by the Board in March 2020
9. Review/establish oversight to transactions from/ to Utah Public Trust Investment Fund
10. Obtain liability coverage, workers compensation, property insurance through Utah Local Govt Trust

2019/2020 Fiscal Year Budget

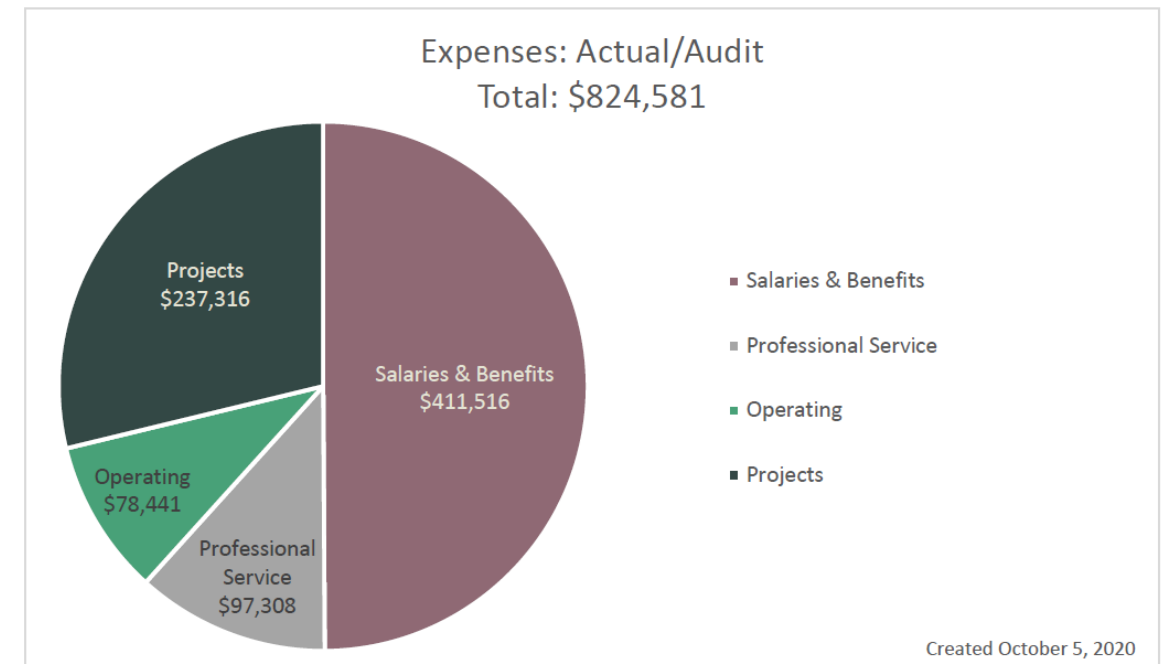
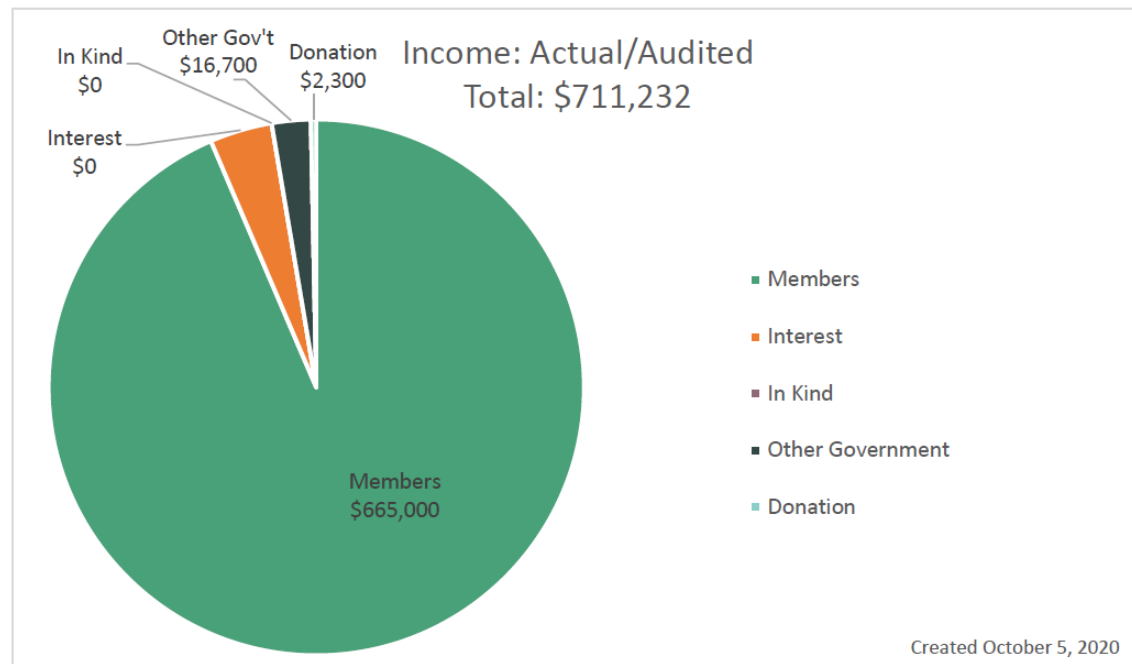


Created October 5, 2020



Created October 5, 2020

2019/2020 Fiscal Year Budget





Stakeholders Council

In 2019, the Stakeholders Council met monthly to discuss and advise on topics including transportation, drafting work on the NCRA, and recreation improvements. The council engaged in two workshops to gather feedback and information on the draft NCRA and UDOT's Purpose and Need Statement and Screening criteria.

The beginning of 2020 saw some minor changes to the Stakeholders Council. With guidance from the CWC Board, the Stakeholders Council developed three working committees including a Trails, Visitor Usage, and Millcreek committee.

The committees would meet as needed in order to pursue the purpose of which they were created. With this change in work, the Stakeholders Council also agreed to meet quarterly.

The Visitor Usage Committee
has been actively meeting to create and refine a work prospectus. A draft prospectus has been developed, refined and supported by the Stakeholders Council, and has moved on to the CWC Board for support. The committee is now working to identify funding to support a potential study.

The Millcreek Committee
initially explored implementing a pilot shuttle program. Working with the Forest Service and Salt Lake County, the group decided that necessary infrastructure and parking improvements are necessary prior to a pilot shuttle program. The committee shifted its focus to work on minimizing conflicts between bikers and dogs, fuels and fire mitigation, mobility, and safety in the canyon.

The Trails Committee
has yet to formally meet. When the committee was formed the purpose of the group was to pursue developing an outline of work for a Trails Master Plan of the Central Wasatch.

2019/2020 Central Wasatch Commission Stakeholders Council Committees

Legislative/Land Tenure Committee

The Legislative/Land Tenure Committee formed out of the 2019 CWC Board Retreat and meets to work on land tenure and other issues relating to the Central Wasatch National Conservation and Recreation Area act. The goal is to reintroduce a bill in a future Congress. All four Cottonwood Canyon ski resorts, private property owners, the environmental community, and recreation groups are all present with the committee meets.



2020 Short-Term Projects/Short-Term Projects Committee

The following short-term projects built partnerships between the CWC and organizations including: Utah Open Lands, Save Our Canyons, Trails Utah, the Forest Service, Salt Lake Climbers Alliance, the Utah State Division of Forestry, Fire, and State Lands, and the Graffiti Busters.

2020 Short-Term Projects



CO-SPONSORED
CHIPPING IN
CWC PROJECT
AREA



MAINTENANCE
OF USFS
BATHROOMS IN
LITTLE AND BIG
COTTONWOOD
CANYONS



CONSTRUCTION
OF TWO
SIGNIFICANT
BRIDGES ON
THE DOG LAKE
TRAIL



SUPPORT OF
ACQUISITION
OF LAND AT
THE BASE OF
LCC



SUPPORT OF
ONGOING
MAINTENANCE
OF THE LONE
PEAK
WILDERNESS
WAG BAG
KIOSK



SUPPORT OF
GRAFFITI
ABATEMENT
WORK
THROUGHOUT
THE CWC
PROJECT AREA



STEWARDSHIP AT
GATE BUTTRESS
TRAIL TO BUILD
TRAILS AND
REPLACE AGING
FIXED HARDWARE
ON CLIMBING
ROUTES



SUPPORT OF
DESOLATION
TRAIL REROUTE
MAINTENANCE
WORK

A dense forest of trees with bright yellow autumn foliage. The trees are tall and slender, with their branches reaching upwards. The leaves are a vibrant yellow, contrasting with the darker green of some leaves still on the trees. The background is a soft, out-of-focus blue, suggesting a clear sky.

Environmental Dashboard

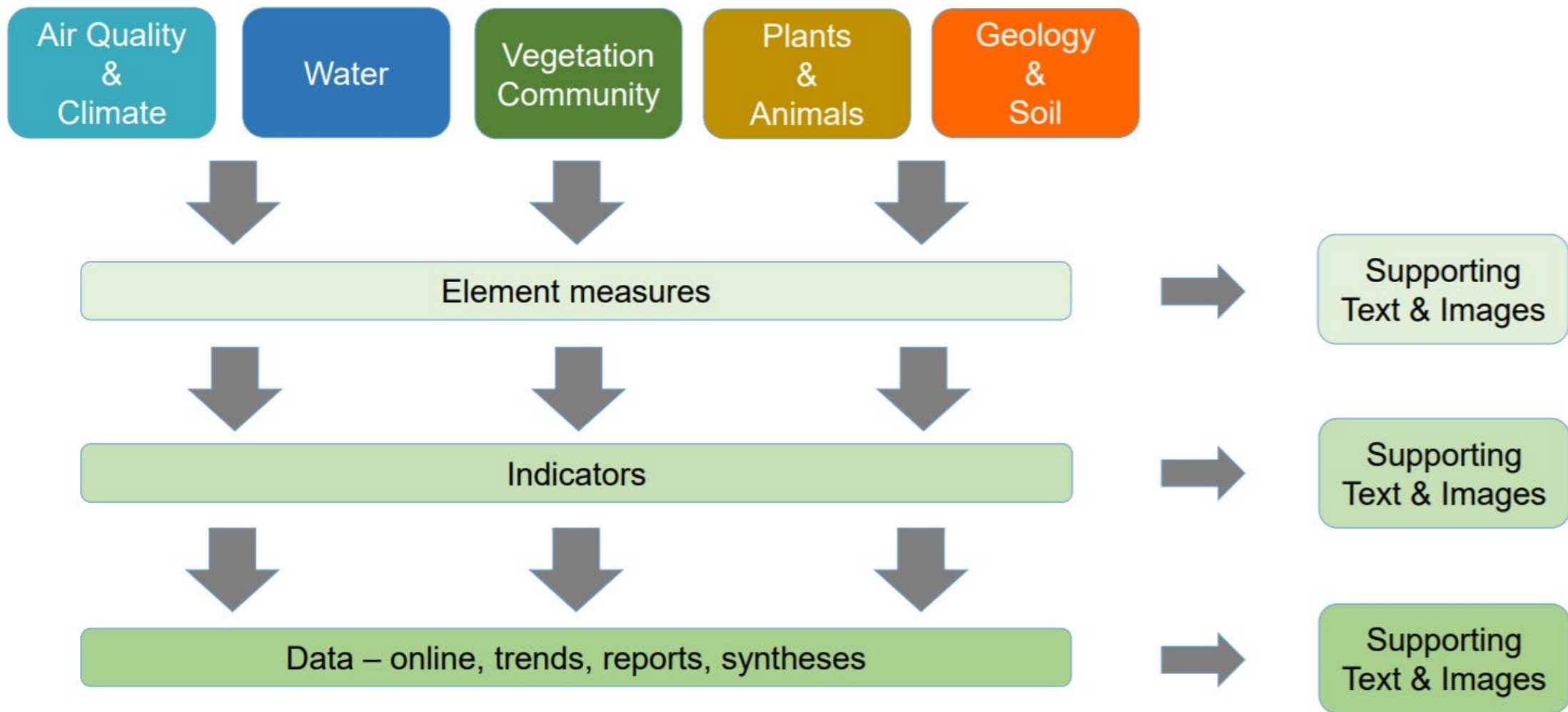
During 2019, the CWC contracted with the University of Utah to build upon the work completed by the original Environmental Dashboard contractor, The Brendle Group.

Under the direction of the CWC, Dr. Jim Ehleringer and Dr. Phoebe McNeally have rescoped the Dashboard, bringing it from a static paper report to a dynamic, online tool.

Phase 1 of the Dashboard was completed December 2019. Phase 2 is currently in motion, with the Dashboard projected to be online and functional in 2021.

The cost of Phase 1 and 2 the Dashboard is just under \$200,000.

Proposed Dashboard Elements




Mountain Transportation

During 2019/20, the CWC pursued both short-term ski bus service improvements and long-term mountain transportation system planning. Additionally, the CWC continues to actively engage in the UDOT LCC EIS process as a participating agency.

In order to best address these challenges, in November 2019, the CWC Board created a Transportation Committee to help with oversight and direction on the CWC's transportation work. The committee consists of Cottonwood Heights Mayor Mike Peterson, Park City Mayor Andy Beerman, and Town of Brighton Mayor Dan Knopp. CWC ex-officio member, Carlton Christensen was recently added to the Transportation Committee.





2019/2020 Ski-Bus Service Increase

The Central Wasatch Commission contributed \$60,000 toward improving UTA's 2019/2020 ski-bus service, with UTA committing to absorbing the improvement costs into future budgets.

The CWC support of the bus service increase built upon existing partnerships with UTA, and the Cottonwood Canyon ski resorts.

Cottonwood Canyons 2019/2020 Ski-Bus Service Increase



The CWC contributed funding to provide for the following service increases and improvements to UTA's 2019/2020 ski-bus service:



A 26 percent increase in trips on Route 953 (to Snowbird and Alta Ski Area).



A 28 percent increase on Route 972 (to Solitude Mountain Resort and Brighton) to 79 trips per day, up from 61 and 65 trips per day.



Route 972 no longer serves the Bingham Junction Station on the TRAX Red Line, due to high traffic congestion and delays.



To increase efficiency and capacity for more riders, the ski racks were removed on Routes 953, 972 & 994.



Route 953 and Route 994 no longer serve the park and ride lot at the base of LCC, due to traffic congestion and significant delays.



UDOT's Little Cottonwood Canyon Environmental Impact Statement

Over 2019-2020, the CWC has remained committed to being focused on the LCC EIS process. In December 2019, the CWC worked with member jurisdictions and stakeholders to develop comments for the screening criteria development and statement of purpose and need.

The EIS team recently released its screening report and report on a range of reasonable alternatives. Again, working collaboratively with member jurisdictions staff and members of the CWC MTS technical working group, CWC staff develop comments that reflect a majority of the stakeholder and jurisdiction concerns, questions, and comments.

Transportation Initiative	UDOT Little Cottonwood Canyon Environmental Impact Statement	CWC Mountain Transportation System Initiative
Year Initiated	Fall 2018	January 2020
Projected Completion Year	Spring 2022	End of 2020
Geographic Scope	S.R. 210 (including Wasatch Blvd from the mouth of Big Cottonwood Canyon to Alta)	S.R. 190 (Big Cottonwood Canyon), S.R. 210 (Little Cottonwood Canyon), Salt Lake Valley, and the Wasatch Back
Intended Outcomes	The final EIS will be a decision document for final design and construction of specific improvements on S.R. 210	A consensus recommendation for transportation modes for a regional mountain transportation system serving the Wasatch Front and Back
Decision Maker	UDOT	CWC, including member jurisdictions

The Mountain Transportation System (MTS) initiative is a regional transportation plan led by the Central Wasatch Commission (CWC) and member jurisdictions. The Little Cottonwood Canyon Environmental Impact Statement (LCC EIS) is an environmental study led by the Utah Department of Transportation (UDOT) in accordance with the National Environmental Policy Act (NEPA). Each study is following an independent and separate process and differs in intended outcomes, geographic scope, timeline, and the decision makers involved.



Mountain Transportation System Initiative

Over the course of 2020, the Central Wasatch Commission aims to arrive at a proposed framework for a comprehensive year-round transportation system that includes the Salt Lake Valley, Big and Little Cottonwood Canyons, Parleys Canyon, and connections to the Wasatch Back.

The MTS process opened with a public comment period from February 7th — March 1st 2020.

Mountain Transportation System Initiative

CWC staff worked with stakeholders, and Commissioners to prioritize the attributes and objectives of a proposed mountain transportation system. This month-long process resulted in the prioritization of objectives and attributes of a mountain transportation system.

Staff assembled a technical working group consisting of mode experts from rail, aerial, and bus, and regional transportation planners from member jurisdictions. The technical working group produced several concepts that met the objectives and attributes of the MTS initiative. These concepts went through an initial technical feasibility screening and are currently available for public comment through October 18th, 2020.

Mountain Transportation System Project Timeline



photo by Andy Hyer



photo by Faith Colonna



photo by Quinn Graves

WINTER 2020

Initial Scoping Process &
Public Comment Period



SUMMER 2020

Alternative Plans &
Finalize Reports



SEPTEMBER 18, 2020

MTS Expert Panel



NOVEMBER 13, 14, 2020

MTS Summit



WINTER '20/'21

CWC Board Will
Recommend an MTS

SPRING 2020

Comment Report
Approved



FALL 2020

Release MTS
Alternatives & Public
Comment Period Begins



photo by Jake Nackos



**CENTRAL
WASATCH
COMMISSION**

Date revised: 8.26.2020

Communications and Engagement



The CWC is committed to ongoing and transparent communication with the public across multiple platforms:



408 “likes” on Facebook, with over 2,300 page impressions over the course of our most engaging 5-day stretch.



1,127 “follows” on Instagram.



491 “follows” on Twitter.



Average 1,000 monthly website visitors.



Average 26% newsletter email opens.



**CENTRAL
WASATCH
COMMISSION**

Central Wasatch
Commission
2019/2020
Annual Report

October 5, 2020

