



1

## District Boundaries

- We Provides Service to 20 Municipalities in SL County

2

### Six Full Time Staff

### 21 Seasonal Employees

3

## Mosquitoes are a nuisance and are potential vectors for disease

4

## Surveillance

- 52 mosquito traps

5

## Urban Program

6

### Catch Basin Program



7

### Mosquito Crew



8

### ULV Truck Fogging



9

### Black Fly Program



10

### Education



11

### Mosquito Abatement and the Jordan River

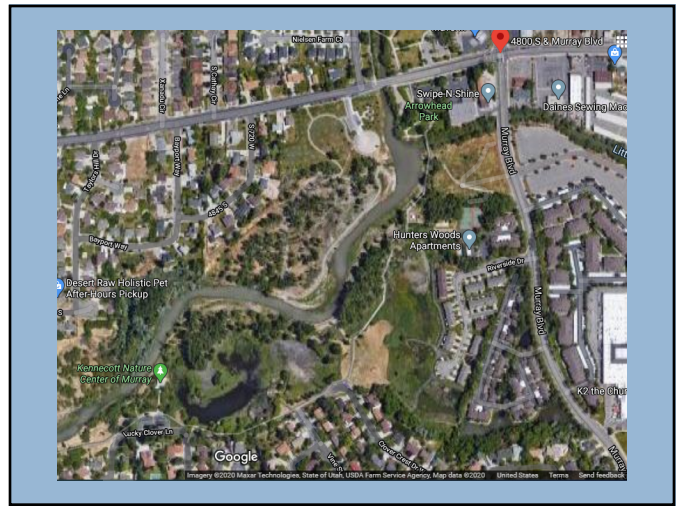


12





13



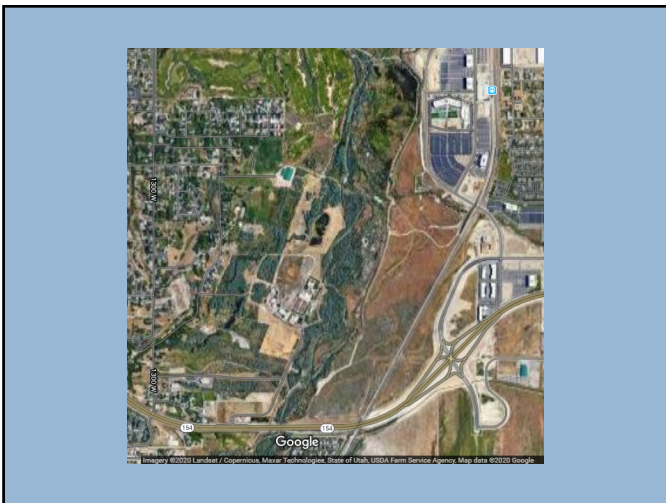
14



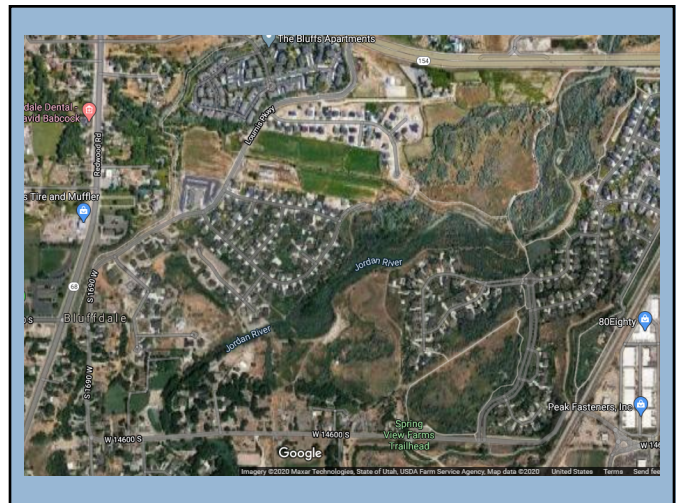
15



16



17



18

### Agency Cooperation

- Salt Lake County - Parks Department
- Cities – Midvale, Sandy, Riverton
- Utah Reclamation Mitigation and Conservation Commission
- Department of Natural Resources
- Various Landowners

19

Questions ?

20