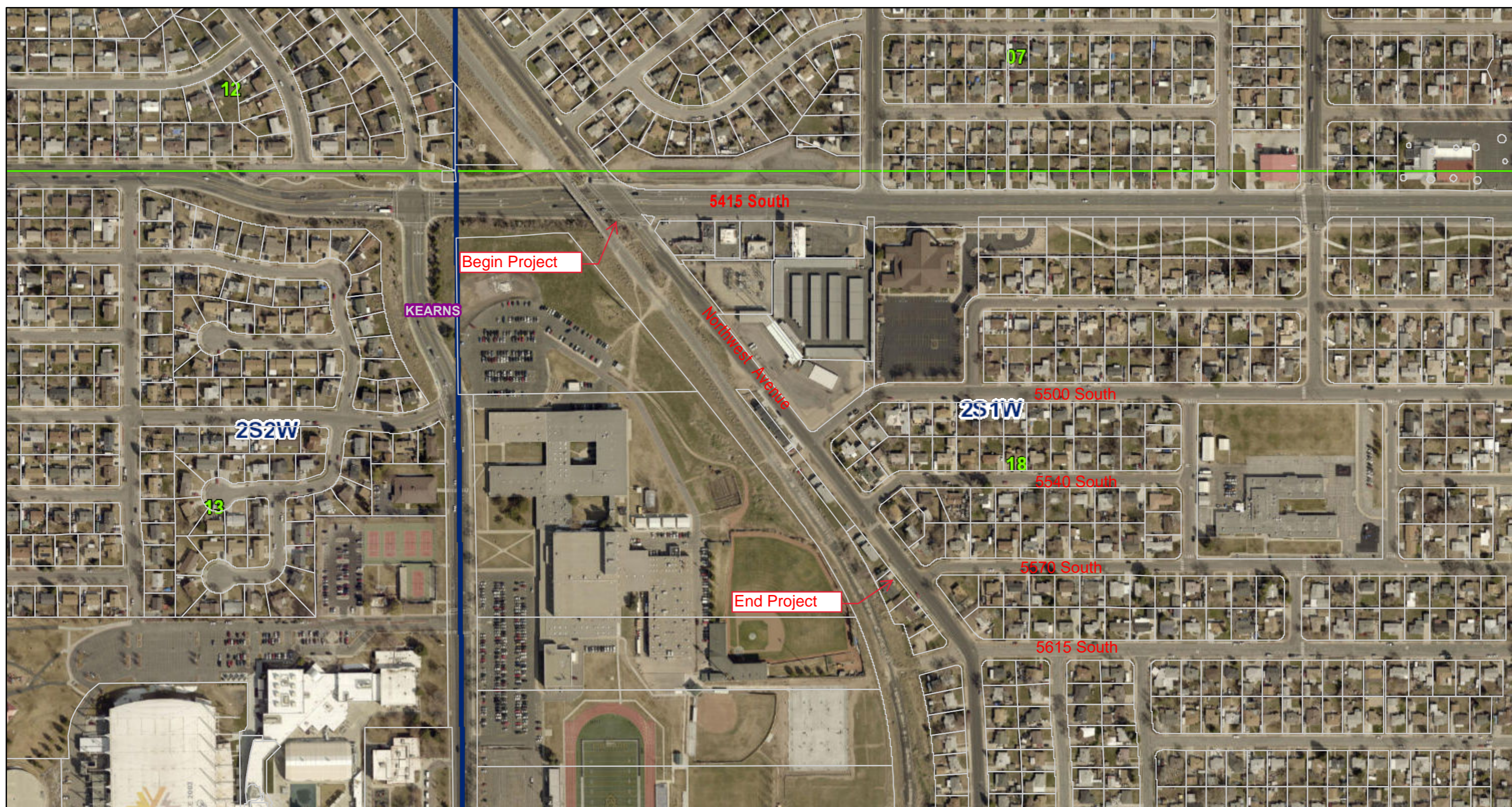




Survey & Monument Search



February 25, 2020

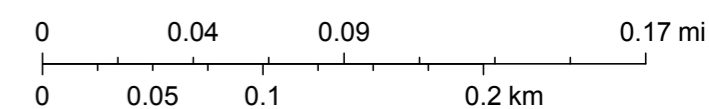
 Parcels
  Sections
  Corner Reports

 Municipalities
  Townships

NORTHWEST AVENUE STREET IMPROVEMENT PROJECT

KEARNS METRO TOWNSHIP

1:4,514



Source: Esri, DigitalGlobe, GeoEye, Earthstar Geographics, CNES/Airbus DS, USDA, USGS, AeroGRID, IGN, and the GIS User Community, Salt Lake County Assessor, Clerk, Mayor, Recorder, and Surveyor