

Maple Hills Park





Public Input

Attendees: Approx. 25

Two Concepts Presented

Top Input included:

- Bike Adventure Path
- Scooter Loop
- Play Zones approach
- Sledding Hill
- Circular Swing
- Ample Seating



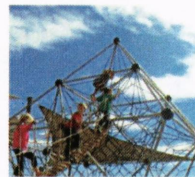
Spin Zone Ideas



Circular Swing



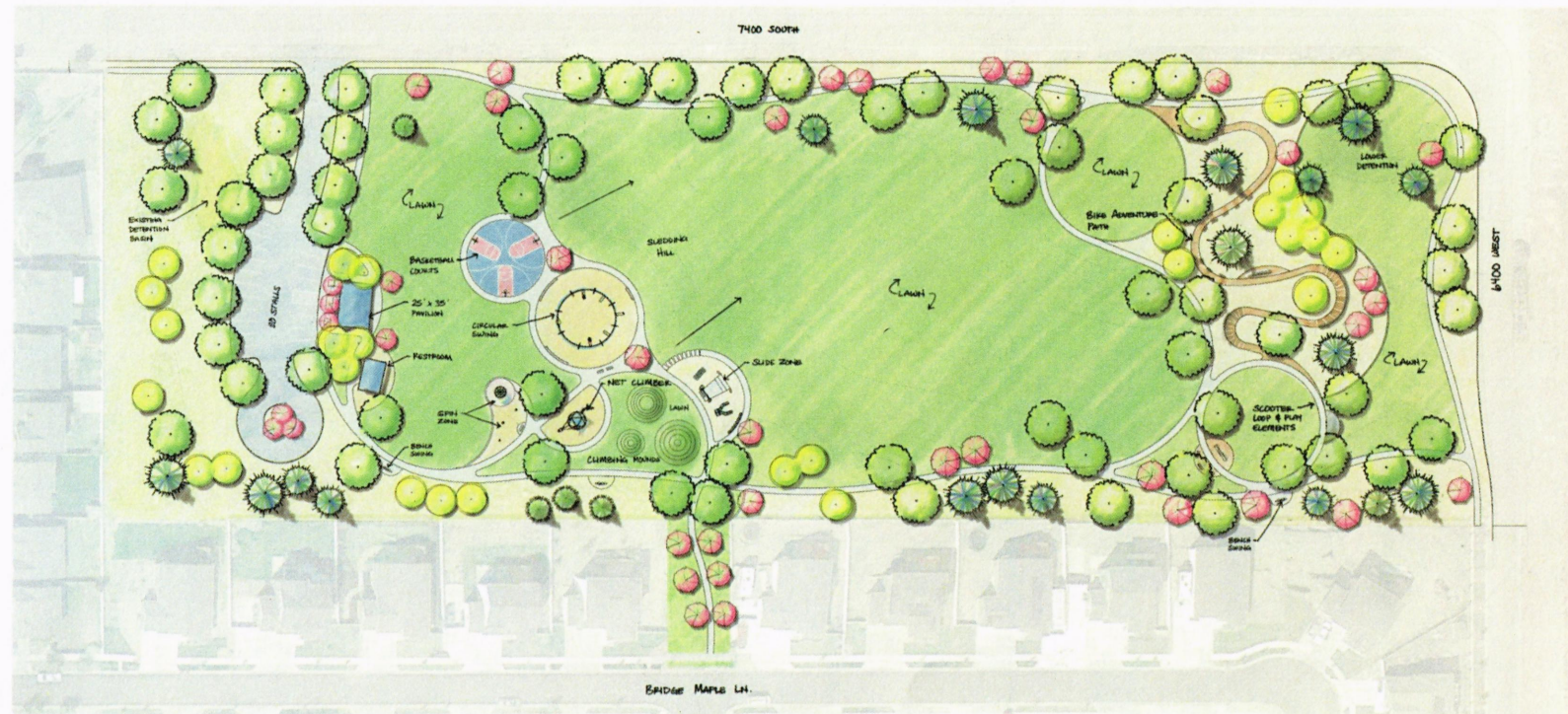
Climbing Zone Ideas



Slide Hill Ideas



Bench Swing



Bike Adventure Path Ideas



Phase One Amenities:

- Lawn & Trees (2 ac)
- Pavilion
- Play Areas
- Pathways

Phase Two Amenities:

- Restroom
- Parking Lot
- Scooter & Bike Paths
- Additional Lawn & Plants

*Phasing may require adjustment depending on project budgets

Maple Hills Park - Master Plan

G.B.D
G. BROWN DESIGN INC
SITE AND LANDSCAPE ARCHITECTS
610 East South Temple, Ste 50
Salt Lake City, Utah 84102
p 801 575 6066 f 801 575 6166
www.gbrowndesign.com

WEST JORDAN

Jan. 16, 2020





Phase 1

Budget: \$410,000

Improvements may include:

- Walkways
- 1.2 Acres of Lawn & Trees
- Spin Play Area
- Climbing Play Area
- Picnic Pads
- Drinking Fountain

G.B.D.
G. BROWN DESIGN INC.
SITE AND LANDSCAPE ARCHITECTS

[illegible]