



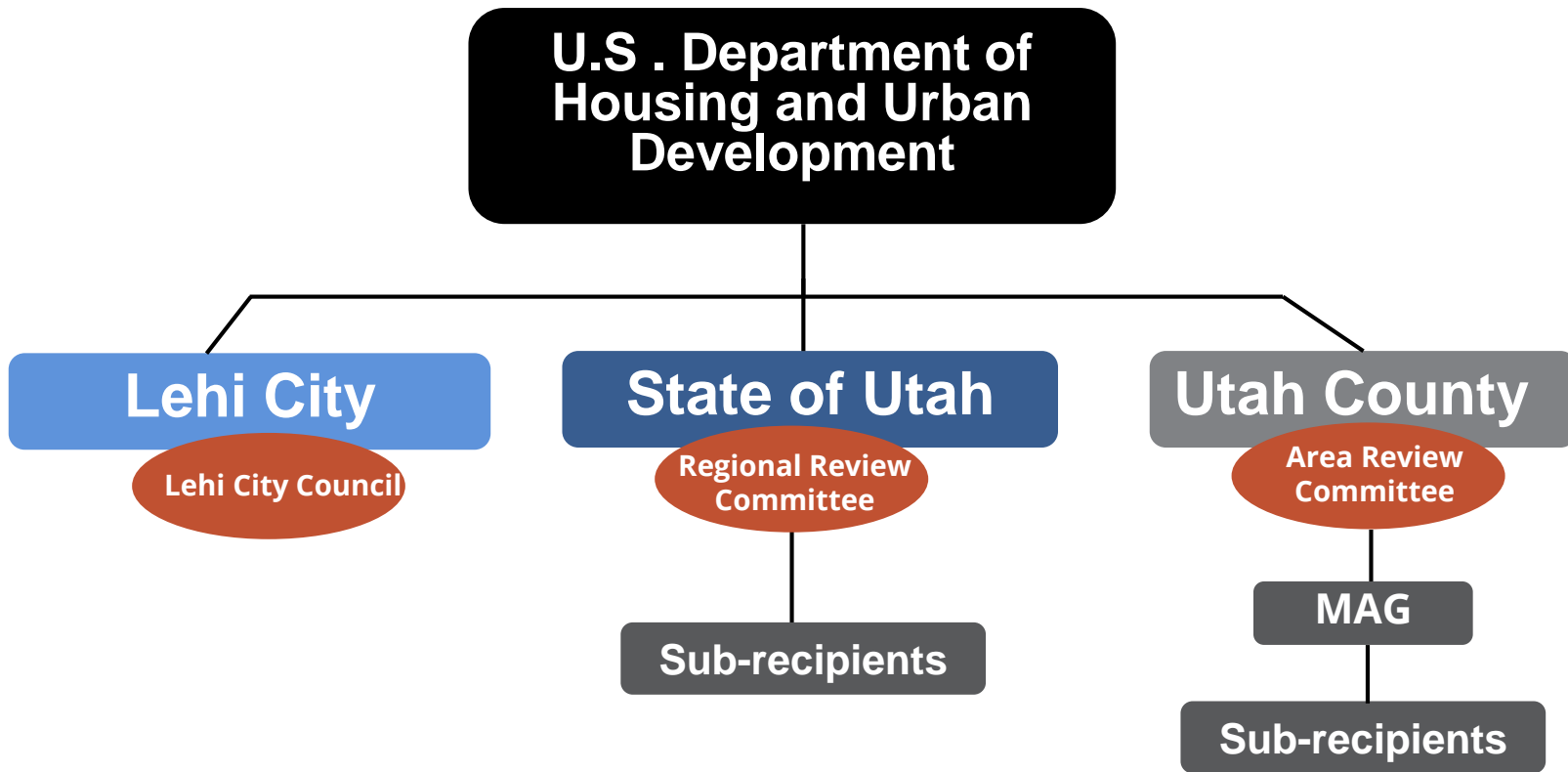
M A G

Expert Resources. Enriching Lives.



Community and Economic Development Programs

- Utah County Community Development Block Grant (CDBG)
- Wasatch and Summit State Small Cities CDBG
- Lehi CDBG
- Mountainland Economic Development District
- Revolving Loan Fund (Small Business Loan Fund)



Utah County Urban Renewal FY20 – FY22

Eligible Jurisdictions

- American Fork
- Cedar Fort
- Cedar Hills
- Elk Ridge
- Genola
- Goshen
- Highland
- Lindon
- Mapleton
- Payson
- Pleasant Grove
- Salem
- Santaquin
- Saratoga Springs
- Spanish Fork
- Springville
- Vineyard

Opted Out

- Alpine
- Eagle Mountain
- Fairfield
- Woodland Hills

Entitlement Cities

- Lehi
- Orem
- Provo



Utah County CDBG FY20

- Estimated \$1.3M is available in FY 2020 for eligible Utah County jurisdictions, non-profits, and other organizations for community and economic development projects
- Joint (Orem, Provo and Utah County) How to Apply Workshops were held October 22nd & 23rd
- Utah County How to Apply Workshop **10 AM, Wednesday, October 30th**
- Pre-Applications are due **December 6, 2019**
- Final applications are due **February 21, 2020**



Wasatch and Summit State Small Cities CDBG FY20

- Estimated \$550,000 for FY2020
- How to Apply Workshop **4:30 PM, Tuesday, October 29th**
- Applications are due **January 31, 2020**

Lehi CDBG FY20

- Estimated \$225,000 for FY2020
- Working with Lehi City Council and Staff to Identify Projects



ECONOMIC DEVELOPMENT ROUNDTABLE

November 21, 2019

12:00-1:30pm

Lunch will be provided

MAG Office
586 E 800 N, Orem



10 Year Anniversary of the Revolving Loan Fund

Loan Portfolio

2009-2019

- \$2,425,814 Disbursed to 56 Companies (totaling 67 loans)
- \$200,949 in Loan Losses (8.3%) 9 Companies
- Approximately 156 Jobs created/retained
 - Cost of Approximately \$15,550 per job
 - Federal Requirement is at least 1 job per \$35,000

At Present

- Currently Servicing 22 Loans
- \$810,962 Current Loan Balance
- \$300,000 Available to Loan



YOUR ONE STOP FOR
ADVENTURE
IN NORTHERN UTAH
435-657-2008

Loans

2009 - \$20,300

2012 - \$34,510

2013 - \$49,080





WASATCH

COMPOSITE ANALYSIS

Loans

2012 - \$75,000

2013 - \$50,000



Cryogenic test chamber at NASA's facility in Huntsville, AL

Questions?

Michelle Carroll, MPA

Community and Economic Development
Mountainland Association of Governments

801.229.3833

mcarroll@mountainland.org