



# GREATER SALT LAKE MUNICIPAL SERVICES DISTRICT


2020 Budget Request

## Salt Lake County Justice Court

# SLCO JUSTICE COURT 2020 MISSION

## Mission Statement

To provide the highest level of judicial service to the citizens of the County and the other levels of the Court at the lowest cost and in the most expeditious manner.

Three parallel white lines of varying lengths are positioned diagonally in the bottom right corner of the slide, pointing towards the top right.

# SLCO JUSTICE COURT 2020 EFFICIENCIES

REMODELING OF COURT ROOMS WILL IMPROVE SECURITY BY MOVING THE JAIL CELLS NEXT TO THE COURT ROOM.

MOVING PAPERWORK TO ELECTRONIC FORM

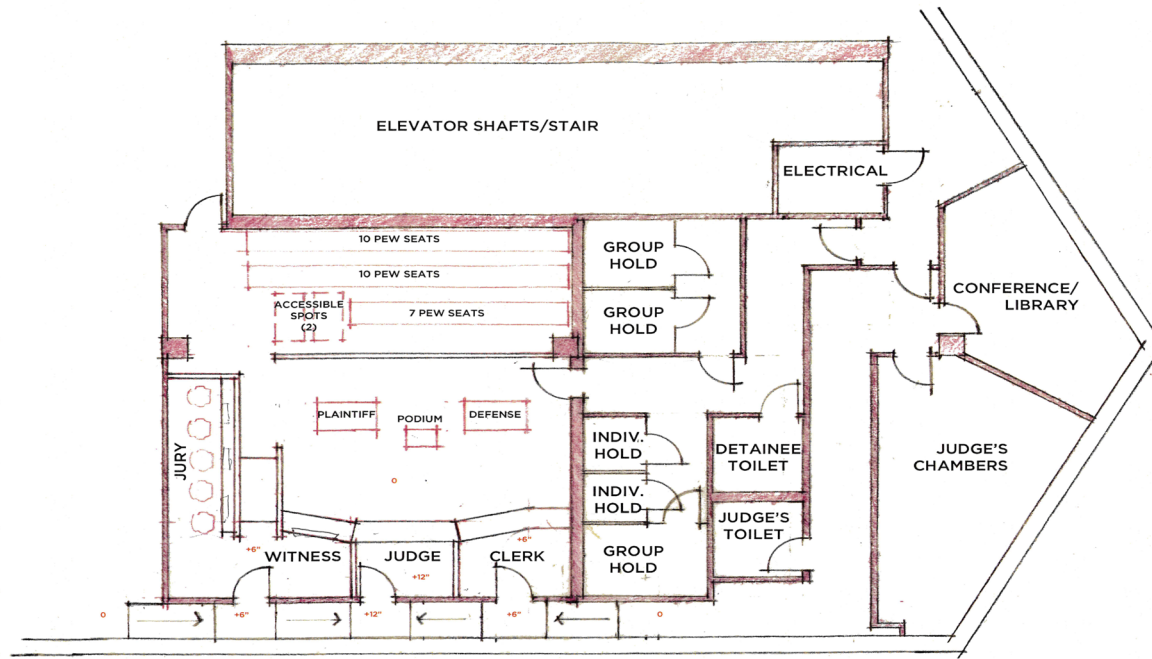
NEW ELECTRONIC SMALL CLAIMS PROCESS

## NEW IDEAS ETC.

NEW TECHNOLOGIES IN THE COURT ROOMS

BREAKOUT OF TICKETS BY EACH JURISDICTIONS DATE IS AUGUST 15, 2019

# SLCO JUSTICE COURT REMODEL COURT ROOM DESIGN



SOUTH COURTROOM - JUSTICE COURT REMODEL - SALT LAKE COUNTY  
CONCEPT PLAN - 5/30/19



# SLCO JUSTICE COURT

## TOTAL REVENUES COLLECTIONS FOR MSD

2018 - \$509,295.96

2019 - \$306,833.33 JAN – JUL ACTUAL

2019 - \$261,354.28 PROJECTED AUG – DEC

2019 – YEAR OVER YEAR INCREASE IN COLLECTIONS  
\$58,891.65 IF PROJECTIONS STAY ON TRACK

# SLCO JUSTICE COURT REVENUES/EXPENDITURES BY TOWNSHIP/TOWN

## Expenses – Projection 2020

Township	Population	%	Expenses
Copperton	852	0.99%	\$ 10,890.00
Emigration Canyon	1,633	1.95%	\$ 21,450.00
Kearns	37,656	42.84%	\$ 471,240.00
Magna	29,312	33.20%	\$ 365,200.00
White City	6,132	6.81%	\$ 74,910.00
Unincorporated	11,923	14.21%	\$ 156,310.00
		<b>Total</b>	<b>\$ 1,100,000.00</b>

## Revenues – Projection 2020

Township	Population	%	Revenue to TS
Copperton	852	0.99%	5,619.38
Emigration Canyon	1,633	1.95%	11,085.34
Kearns	37,656	42.84%	243,411.57
Magna	29,312	33.20%	188,638.29
White City	6,132	6.81%	38,693.58
Unincorporated	11,923	14.21%	80,739.46
		<b>Total</b>	<b>568,187.61</b>

QUESTIONS

