

WHAT IS THE CENTRAL WASATCH COMMISSION



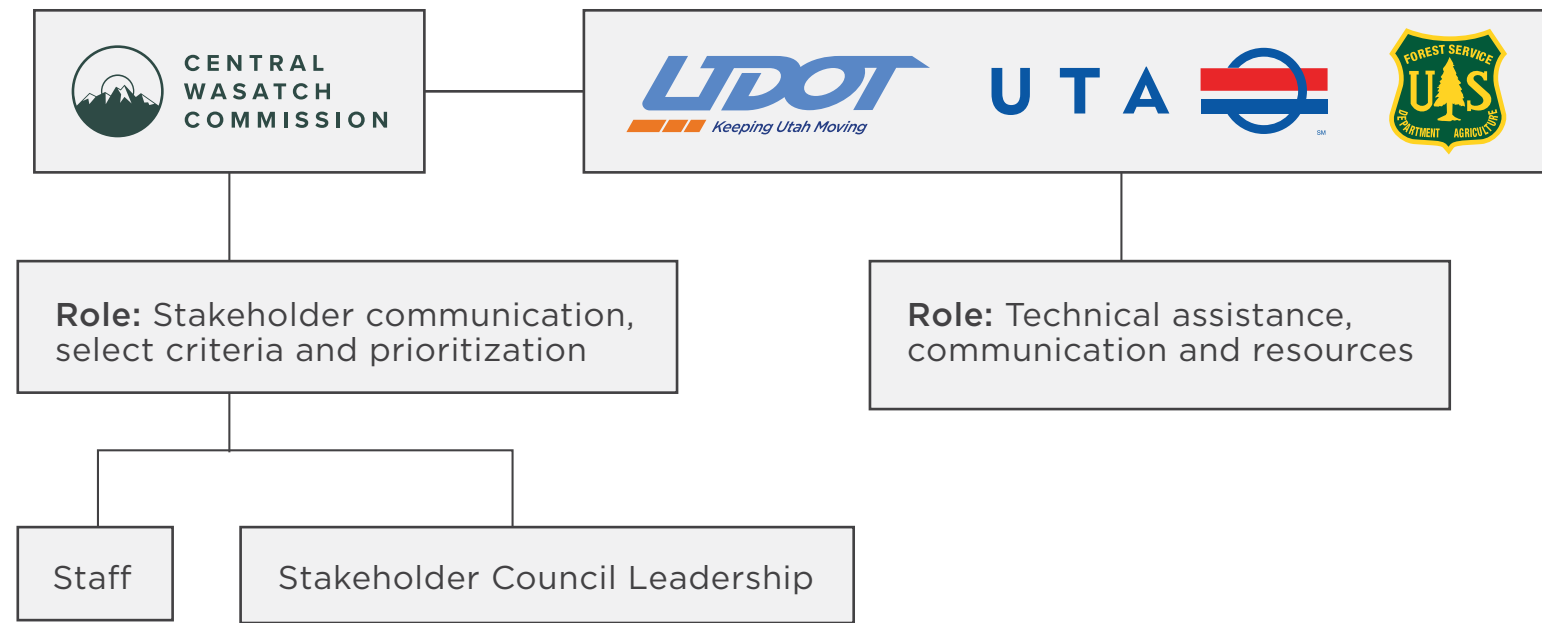
THE CENTRAL WASATCH COMMISSION'S (CWC) MISSION IS TO IMPLEMENT THE VISION OF THE MOUNTAIN ACCORD AND DECADES OF PLANNING.

The CWC is an intergovernmental entity working to implement transportation, recreation, economic development and sustainability initiatives in the Central Wasatch Mountains.

CENTRAL WASATCH COMMISSION MEMBERS:

TOWN OF ALTA | COTTONWOOD HEIGHTS | MILLCREEK | PARK CITY
 SANDY CITY | SALT LAKE CITY | SALT LAKE COUNTY | SUMMIT COUNTY
 UTAH DEPARTMENT OF TRANSPORTATION

TRANSPORTATION ACTION PLAN PARTNERS



COTTONWOOD CANYONS TRANSPORTATION ACTION PLAN

SOLUTIONS FOR THE FUTURE

COTTONWOOD CANYONS BY THE NUMBERS



ANNUAL VISITORS
3.7 MILLION

REGIONAL POPULATION GROWTH BY 2050

Salt Lake County **37% GROWTH**

Utah County **108% GROWTH**

Combined new residents **1 MILLION**



BUILDING ON GOALS DEVELOPED DURING MOUNTAIN ACCORD PROCESS

16 Transportation Related
STUDIES AND PLANS
 Conducted between 1989 and 2015

Source: Mountain Accord, 2014

MOUNTAIN ACCORD GOALS - 2014

- Provide integrated multimodal transportation choices for residents, visitors and employees.
- Ensure the transportation experience is reliable and facilitates a positive experience.
- Ensure the transportation experience is safe and promotes health.
- The transportation system supports the natural and intrinsic values of the Central Wasatch.

CONTACT INFORMATION

udot.utah.gov/CottonwoodCanyons

CottonwoodCanyonsTAP@utah.gov

SOLUTIONS FOR THE FUTURE



Tolling



Parking Structures



Pedestrian and Bike Facilities



Roadway Capacity



Trailheads



Transit



TOLLING

The Transportation Action Plan will evaluate tolling and tolling systems that will include revenue potential, manage travel demand management and implementation feasibility. A public survey will be a component to help evaluate how tolling could impact user travel behavior.



PARKING STRUCTURES

The Transportation Action Plan will evaluate approximate size and layout of parking structures, trade-offs of structured parking in comparison to surface parking and the utilization of existing parking locations. Community benefits of parking structures outside of peak ski days will also be evaluated.



ROADWAY CAPACITY, TRAILHEADS, PEDESTRIAN AND BIKE FACILITIES

The Transportation Action Plan will be identifying and evaluating needs for improvements related to roadway, safety and other user concerns around these topics.

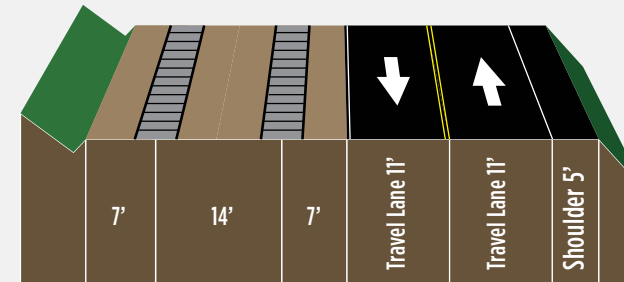


TRANSIT

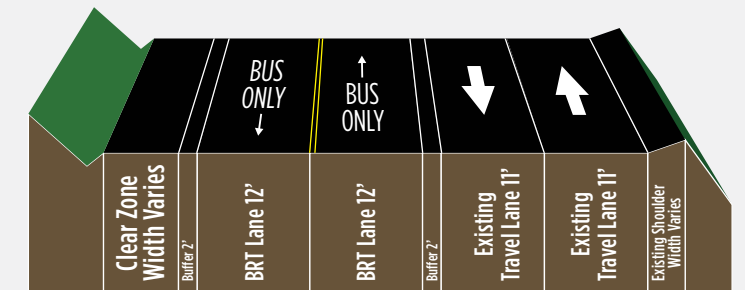
The Transportation Action Plan will be evaluating and refining transit concepts for mountain transportation system such as gondola, rail and bus. We will be building on these concepts brought forward in previous studies including the Mountain Accord and the 2012 Mountain Transportation Study.

The team will gather input on what metrics should be used for evaluation, possible locations and general comments on advantages and disadvantages of these transit modes.

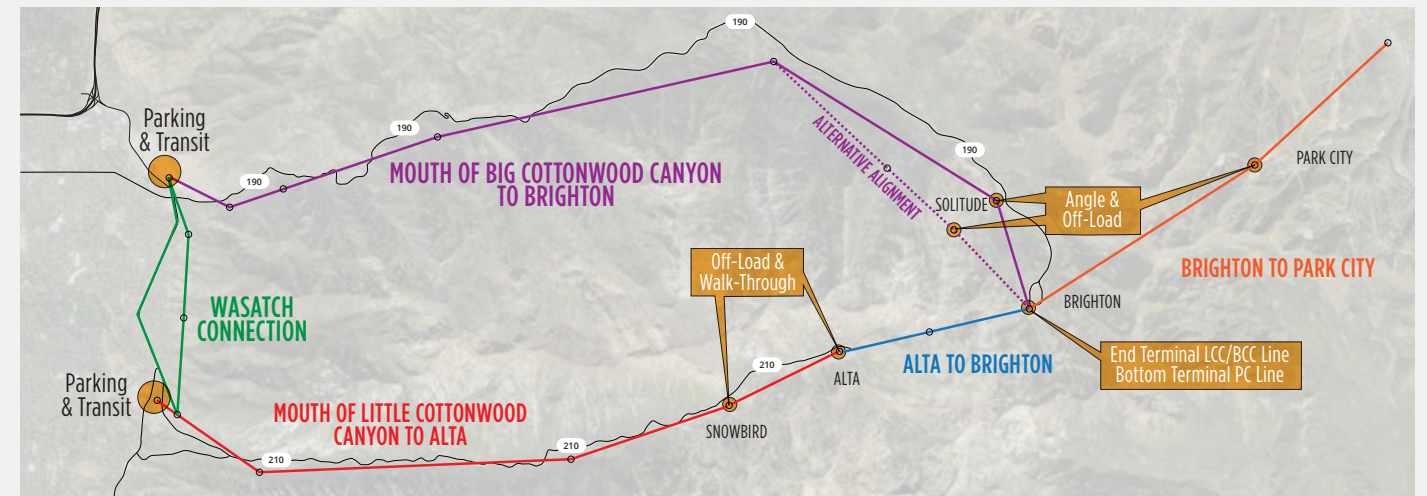
Concept Mountain Rail Cross Section



Concept BRT Typical Section



Gondola Concepts Developed During the 2012 Mountain Transportation Study



OUTCOMES

The Transportation Action Plan will identify short-to-long term solutions for mountain transportation in the Cottonwood Canyons. This includes project prioritization, funding pathways and implementation strategies. Building on previous efforts, the action plan will also proactively work with all stakeholders in a transparent, inclusive process that builds upon previous efforts to identify solutions which consider the broad range of perspectives.

ANTICIPATED SCHEDULE

