



# UTAH INLAND PORT

Public Outreach Update  
March 27<sup>th</sup> 2019



UTAH INLAND PORT

# Public Engagement

## Public Forums

- State Fairgrounds - February 19<sup>th</sup>
- Franklin Elementary School – February 28<sup>th</sup>
- Salt Lake County Chambers – March 28<sup>th</sup>

## Stakeholder Meetings:

- Easton Archery Center – March 15<sup>th</sup>
- SLCC Westpointe – March 28<sup>th</sup>

# INLAND PORT PUBLIC FORUMS

Come to the Utah Inland Port Authority public forums to learn about the Utah Inland Port and share your voice on how you think we can responsibly maximize the potential of the area.

Your input will help us create a strategic plan for future development of the area. Please share your voice!

FEBRUARY 19, 2019  
6 PM - 8 PM

STATE FAIRGROUNDS - ZIONS BLDG  
155 N 500 W  
SALT LAKE CITY, UT 84116

FEBRUARY 28, 2019  
6 PM - 8 PM

FRANKLIN ELEMENTARY SCHOOL  
1115 N 300 S  
SALT LAKE CITY, UT 84104



UTAH INLAND PORT

# Stakeholder Engagement



## **Past meetings and presentations:**

- Community Forum on the Inland Port
- SITLA
- Ninagret Development
- Westside Coalition meetings
- West Valley City
- Jordan River Commission
- Salt Lake City Council Briefing
- Public Forum @ Fairgrounds
- Public Forum @ Franklin Elementary
- Friends of the Great Salt Lake
- Magna Township staff
- Magna Township Council
- Colmena
- Salt Lake Garfield & Western
- Stakeholder meeting @ Easton Archery
- South Shore Duck Clubs
- Suazo Business Center
- Utah Div. of Wildlife Resources
- UDEQ (DAQ)
- UCAIR
- UDOT
- Union Pacific Railway
- Wasatch Front Regional Council



# Stakeholder Activity



What do you really want to see happen?	Votes
Preserve water flows and wetland buffer	14
Use rail to reduce truck traffic	10
Opportunities for small and local businesses	9
Increase manufacturing outbound freight	9
Companies with long-term business plans	8
Return unused land to SLC	7
Remediate landfill through tax increment	6
Economic development	4
Reduce rail impacts on Poplar Grove by consolidating rail	4
Incorporate passenger rail	4
Develop workforce to support the vision	3
Mixed-use centers to reduce traffic	2

# Stakeholder Activity



What do you really want to see happen?	Votes
Bird-friendly building practices	2
Enforcement of policies in the business plan	2
Examine economic trade-offs	2
Environmentally superior design	1
Better communication between Authority and the public	1
Mitigating structures for rail in neighborhoods (sound walls)	0

# Stakeholder Activity

What do you really <b>NOT</b> want to see happen?	Votes
Political Fight	20
“Too many cooks in the kitchen” – disorganized planning	15
Restricting historic uses of wetlands North of I-80	11
Capped Landfill	6
Tax Increment used to facilitate BNSF facility	5
Changed uses in previously developed areas	3

# Recurring Themes

- Air quality and wetlands impacts as the top concerns
- Legacy Parkway truck ban
- Concern over low-paying jobs
- Confusion regarding legislature/legislative process from both initial UIP bill and messaging around SB248 SO2/SO3
- Confusion regarding plans to build north of I-80
- Do not recognize agreements to allow use of tax increment to subsidize infrastructure
- Rail blockage in neighborhoods

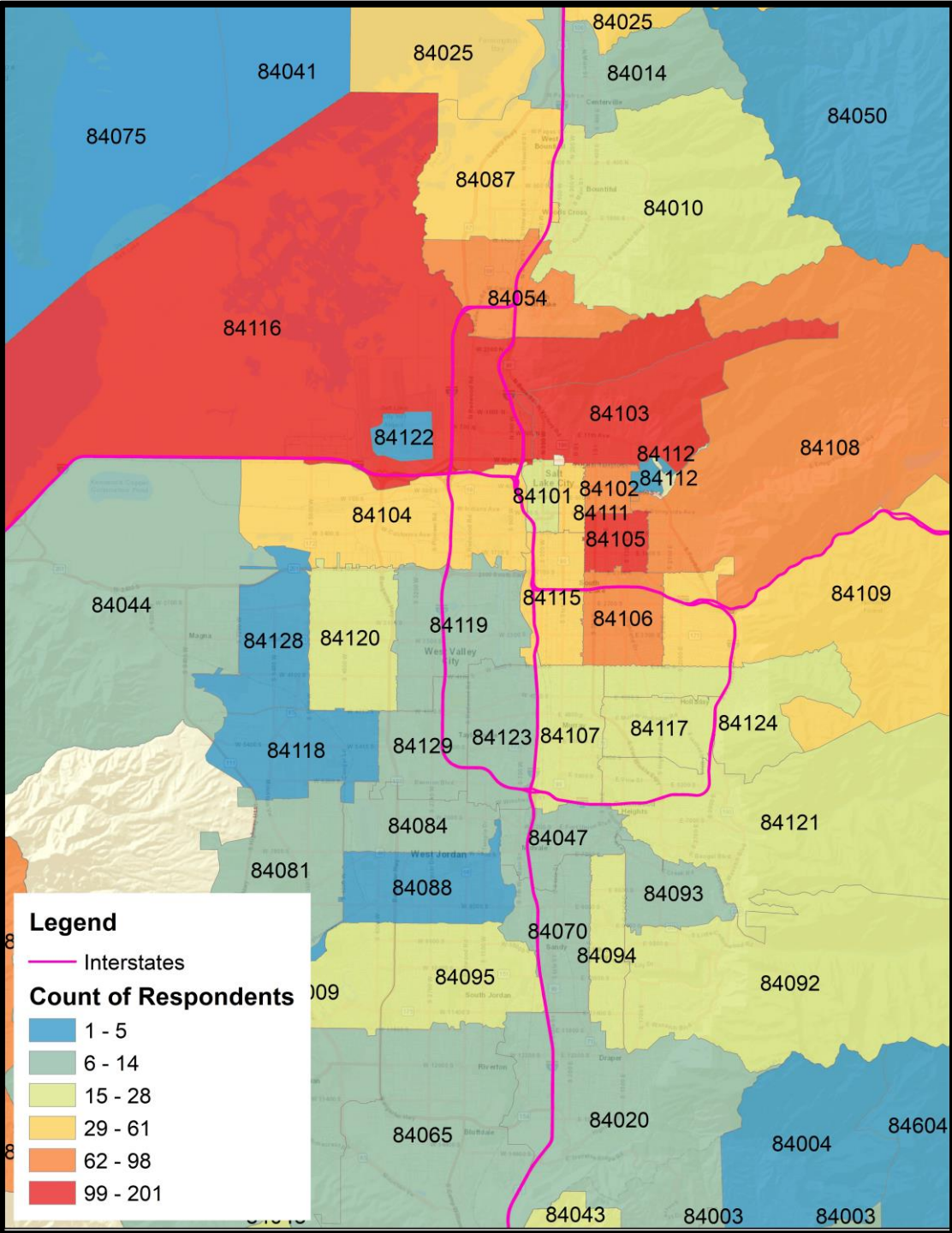
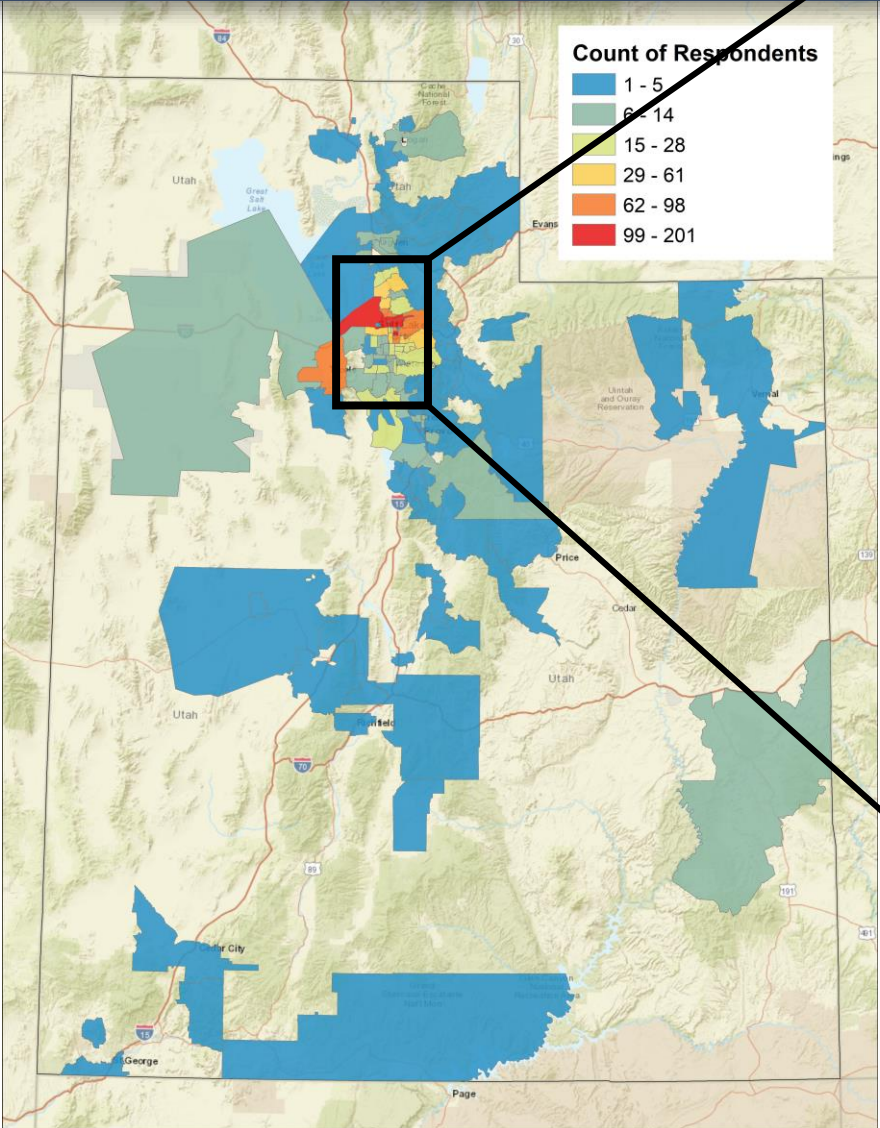
# Utah Inland Port Survey



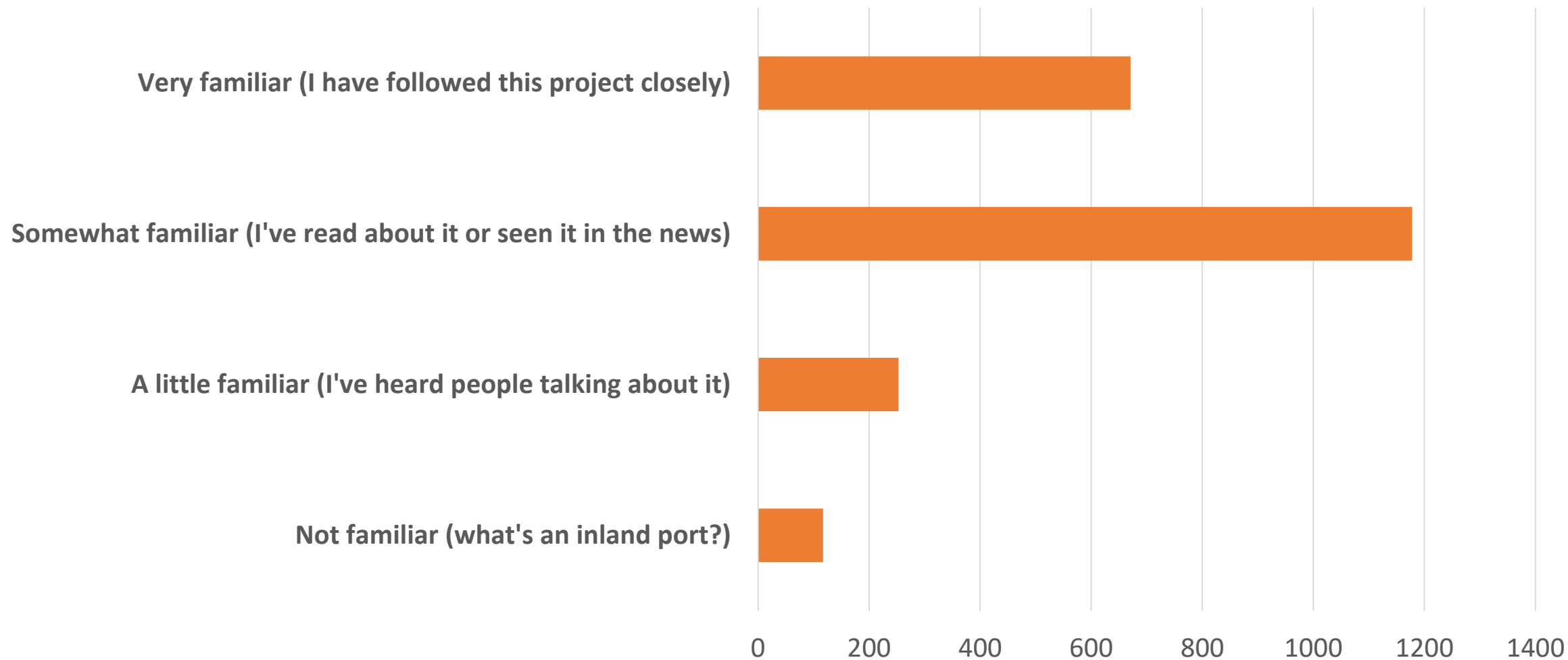
- As of March 26<sup>th</sup>, the Inland Port survey has received 2780 responses. Following is a summary of preliminary results.
- The goal of the survey is to identify priorities for research in the scenarios phase.



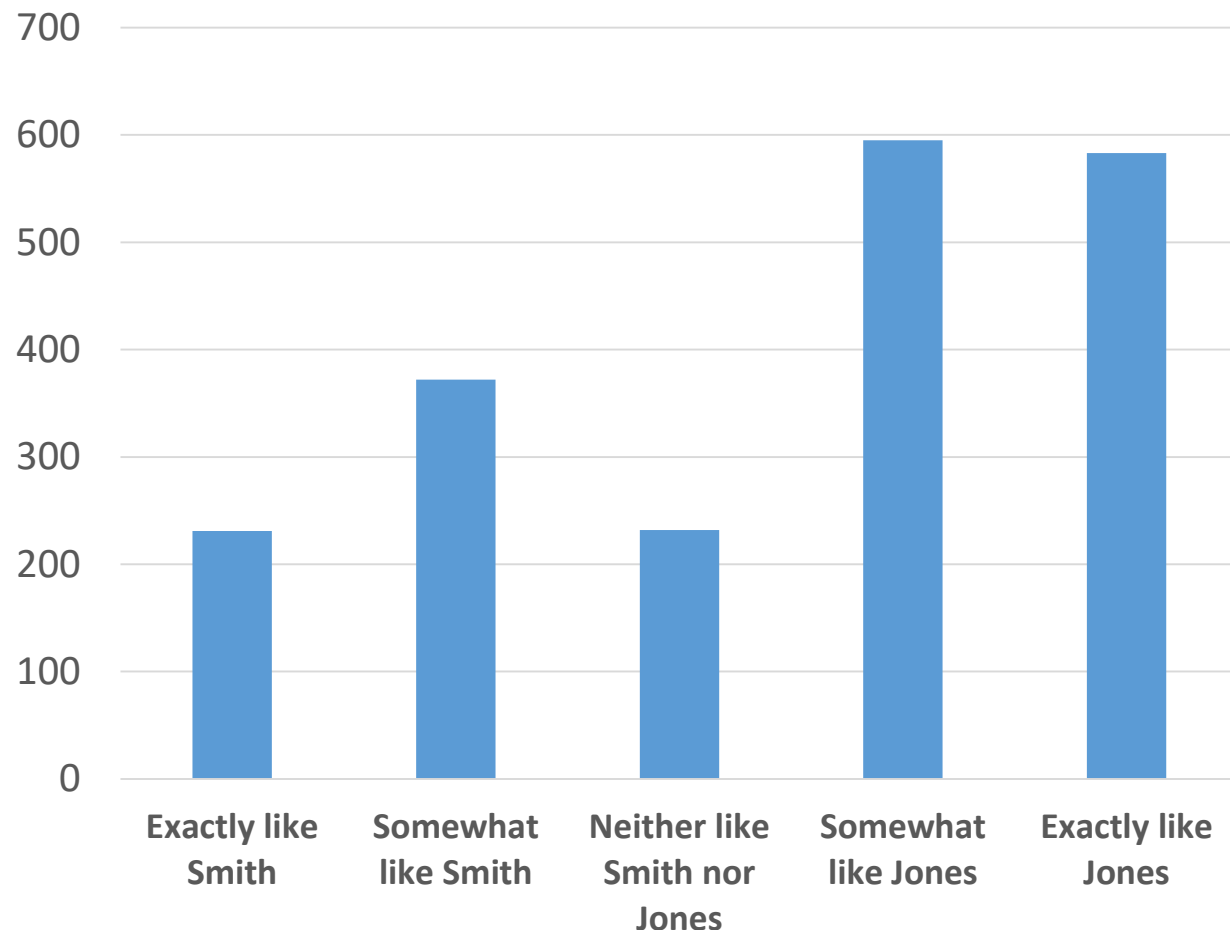
# Where do you live?



# How familiar are you with the Utah Inland Port project?



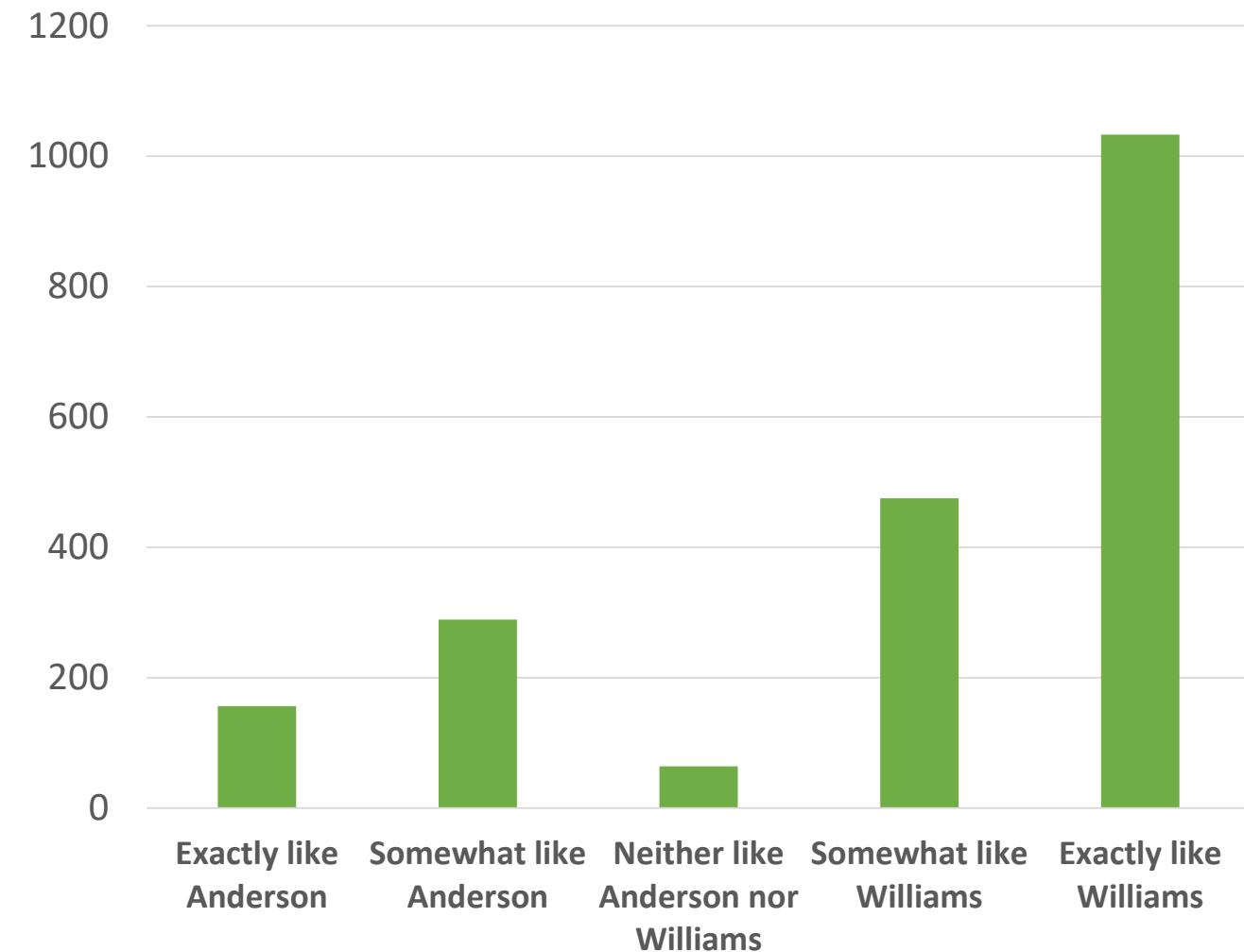
# Is your opinion more like Smith or Jones?



Smith believes that the increased availability of markets and economic opportunity that the inland port will provide will be beneficial to Utah.

Jones believes that the Utah economy is growing quickly enough and does not need the additional stimulus that would come from the inland port.

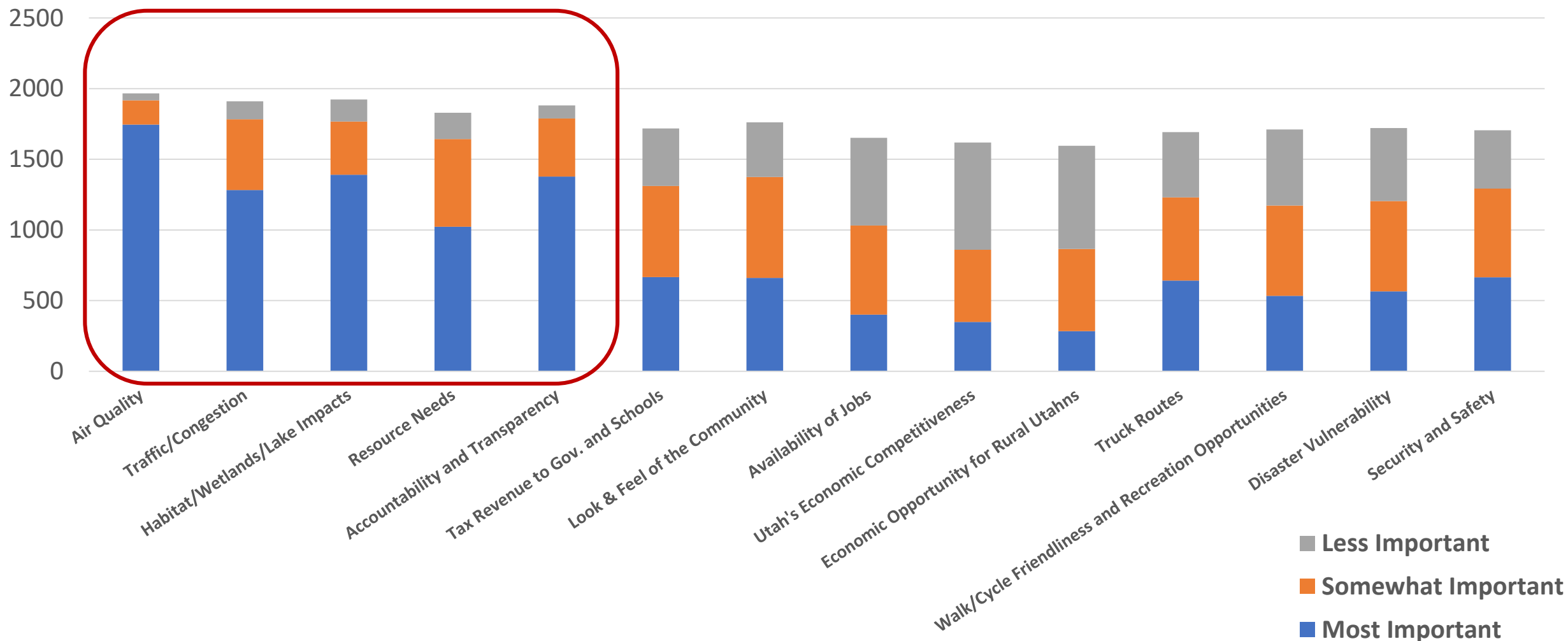
# Is your opinion more like Anderson or Williams?



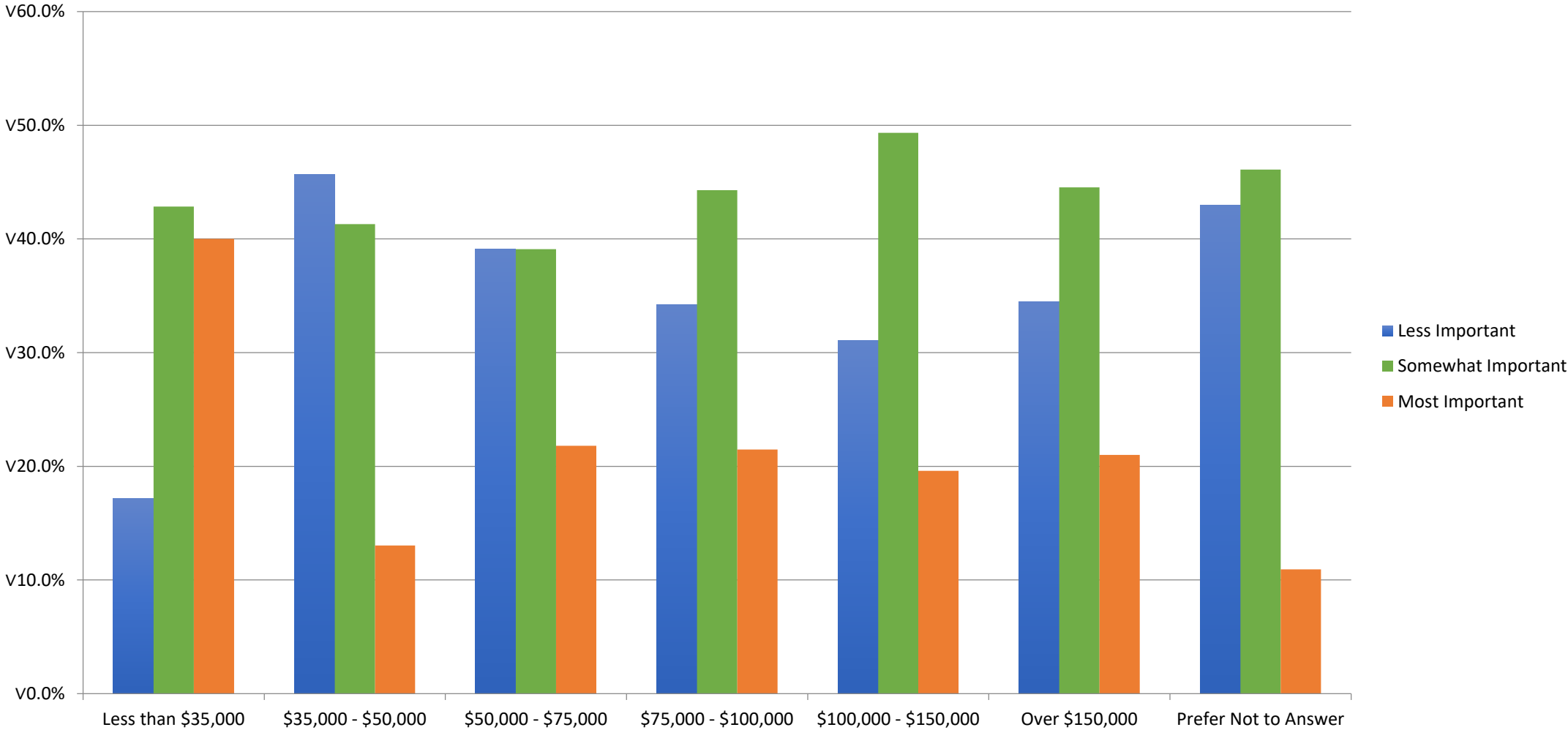
Anderson believes the inland port could be done in a way that mitigates growth-related impacts in the area (air quality, traffic, crowding, etc.).

Williams believes that the inland port will worsen growth related impacts (air quality, traffic, crowding, etc.).

# As the Authority plans for the area, how important is it to think about the following items?



# Importance of Jobs by Income





# Public Working Groups



1. Air Quality – April 8<sup>th</sup>
2. Workforce, Education, and Corporate Recruitment – April 11<sup>th</sup>
3. Environment, Recreation, and Habitat – April 16<sup>th</sup>
4. Roads, Rail, and Air – April 18<sup>th</sup>
5. Transportation and Port Technology – April 23<sup>rd</sup>
6. Satellite Port Development – April 25<sup>th</sup>

# Air Quality



UTAH INLAND PORT

- Alan Matheson
- Bryce Byrd
- Thom Carter
- Scott Williams/Michael Shay
- Ted Wilson
- Jonny Vasic
- Patrice Arent
- Kerry Kelly
- Ted Knowlton
- Dan England
- Kathy Van Dam
- Nathan Anderson
- Ashley Miller
- Patrick Leary
- Vicki Bennett
- Luz Escamilla
- Ashley Yoder
- Royal Delegge
- Dorothy Owen
- Holmes

# Workforce, Education, & Corporate Recruitment



- Natalie Gochmour
- Nicole Cottle
- Ben Hart
- Theresa Foxely
- Patrick Leary
- Clifton Sanders
- Darin Brush
- Blake Thomas
- Laura Bogusch
- Dan Gelston
- Paul Devine
- Lexi Cunningham
- Martin Bates
- Jon Pierpont
- Ben Stevens
- Shawn Milne
- Barbara Riddle
- Heidi Walker
- Richard Holman
- Steve Thomas
- Todd Bingham
- Angie Osguthorpe

# Environment, Recreation, & Habitat



UTAH INLAND PORT

- Deeda Seeda
- Soren Simonsen
- Lynn De Freitas
- Heather Dove
- Mike Fowlkes
- Alan Matheson
- Ashley Soltysiak
- Tom Adams
- Patrick Leary
- Kevin Johnson
- Rodger Mitchell
- Ann O'Connell
- Laura Vernon
- Beau Clements
- Erica Gaddis
- Andy Hunter
- Janet Robins
- Ella Sorensen
- Ann Neville
- Scott Williams/Michael Shay
- Jack Ray

# Transportation & Port Technology



UTAH INLAND PORT

- Dan England
- Rick Clasby
- Ted Knowlton
- Teri Newell
- Clint Harper
- Laura Hanson
- Bill Wyatt
- Paul Devine
- Wilf Sommerkorn
- Stan Fawcett
- Phillip Hoskins
- Dean Dinas

# Roads, Rail, & Air



UTAH INLAND PORT

- Martin Ritter
- Nathan Anderson
- Lindsay Van Meter
- Chris Weesner
- Daniel Kuhn
- Patrick Leary
- Jon Larsen
- Dan England
- Rick Clasby
- Ted Knowlton
- Teri Newell
- Laura Hanson
- Helen Peters
- Bill Wyatt
- Rodger Borgenicht
- Lyle McMillan
- Bob Watters



# Satellite Port Development



UTAH INLAND PORT

- Stuart Clason
- John Roake
- Shawn Milne
- Stan Summers
- Scott Barney
- Garth “Tooter” Ogden
- Phillip Hoskins
- Lynn Sitterud
- Tony Martines
- Greg Schultz
- Josh Romney
- Lance Bolen
- Nate Boyer
- Steve Price
- Betty Parker

# Scenario Development w/ CPCS

1

No Action by the  
Inland Port Authority

2

?

3

?

4

?