

DAVIS TECHNICAL COLLEGE



CAPITAL DEVELOPMENT REQUEST

Presentation to the Utah State Building Board

October 4, 2017





Summary



Intermountain Layton Hospital

- Jobs are waiting to be filled
- Unprecedented growth in programs and employer demand
- Lack of space to grow programs to meet demand
- Challenged to overcome building deficiencies
- Building readiness
- Community support through donations

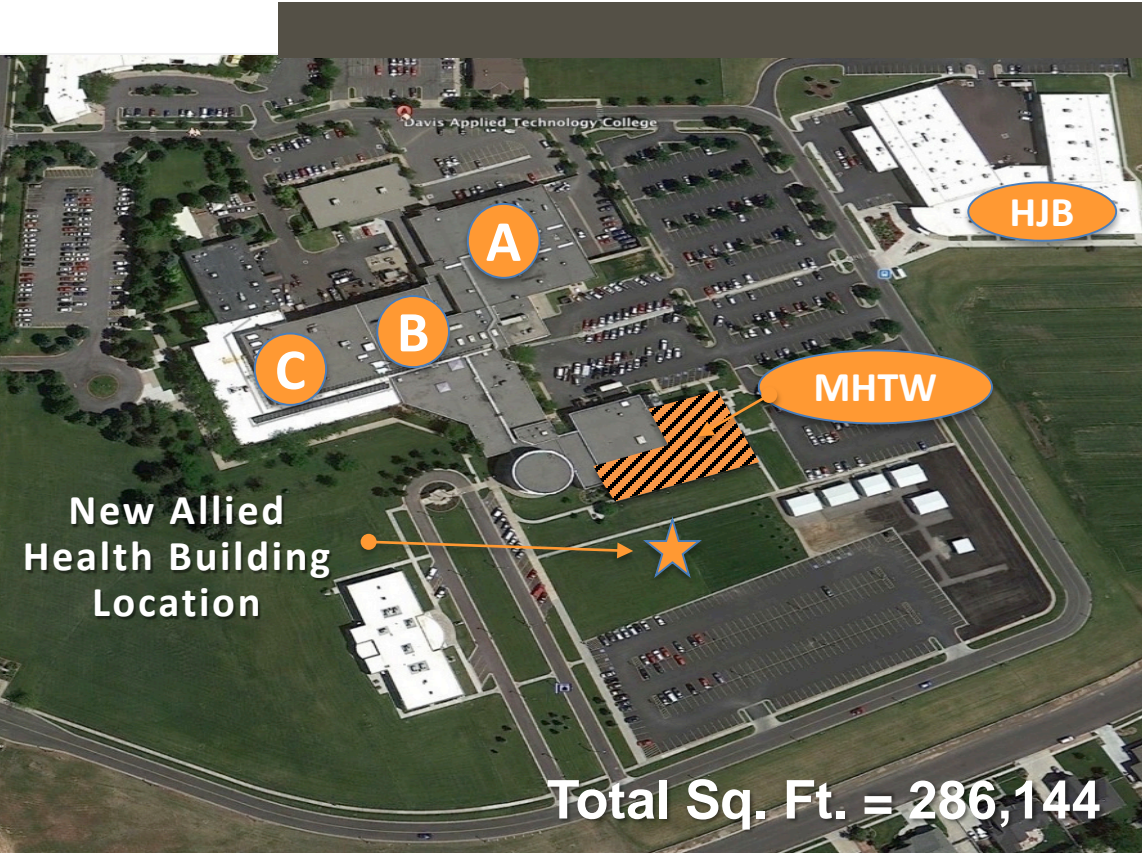


Campus Development History



GROWTH AND CAPACITY

TOTAL: \$30,883,422



Phase A	58,342 sq. ft.
Nov 23, 1983	\$2,485,950

Phase B	43,906 sq. ft.
Aug 2, 1985	\$2,964,379

Phase C	83,464 sq. ft.
Jul 2, 1987	\$4,367,440

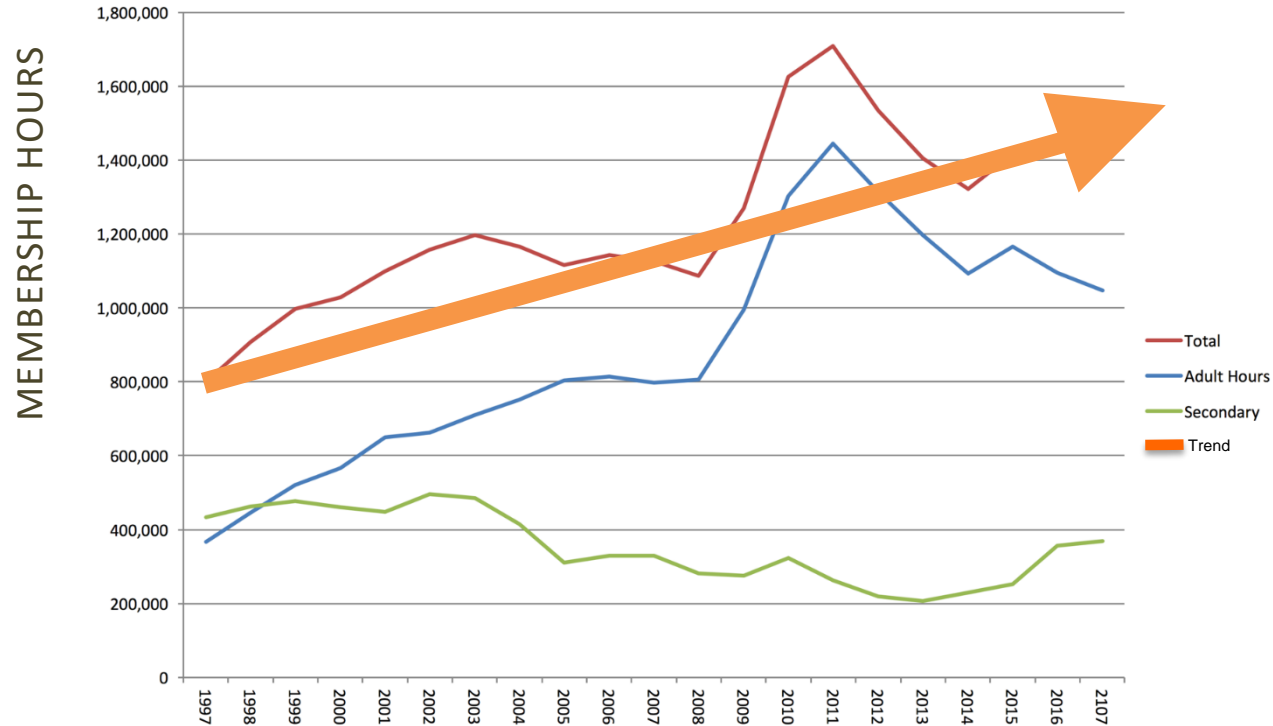
Medical Health Technology Wing	36,432 sq. ft.
Dec 31, 1998	\$6,212,938

Haven J. Barlow Building	64,000 sq. ft.
Mar 1, 2009	\$14,852,715



HISTORICAL GROWTH

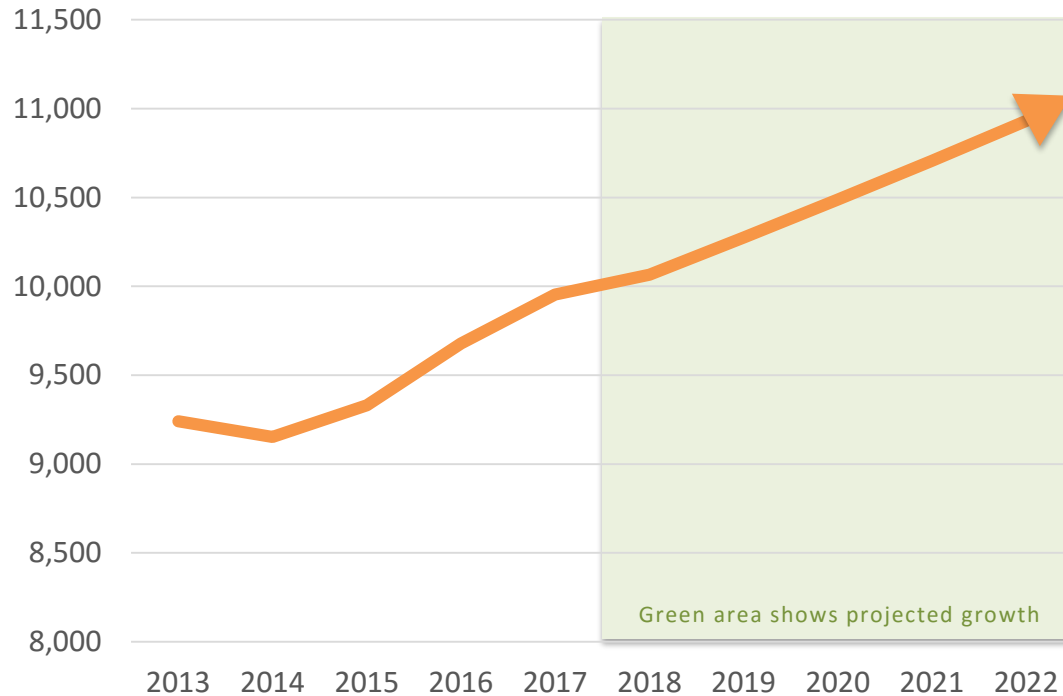
Davis Tech
Growth in Membership Hours





'BUBBLE' OF HIGH SCHOOL STUDENTS

DAVIS SCHOOL DISTRICT
JUNIORS AND SENIORS



We expect to see

19%

of eligible Juniors and Seniors by 2022

#1 Priority of



Top Priority of the
**Davis Chamber
of Commerce**

Priority of the
**Northern Utah
Chamber Coalition**

Includes 5 Chambers from
Davis County to Logan



ALLIED HEALTH BUILDING

Building the Future of Davis County Health Care

85,000
Sq. Ft.



Preliminary cost estimate: **\$35,696,525**

Other sources of funding: **(\$1,332,000)**

FY19 requested funding: **\$34,364,525**



COMMUNITY SUPPORT

Current Cash and
Donations/Commitments

\$1,332,000

\$130,000 at this point last year

DONORS

- Haven J. & Bonnie Rae Barlow Family Foundation
- Dr. & Mrs. Nadim Bakhazi
- Dr. & Mrs. Bruce Burtenshaw
- Dr. & Mrs. Grant Christian
- George S. & Dolores Doré Eccles Foundation
- Employees of Davis Technical College
- Val A. & Edith Green Foundation
- Dr. Jason Hoagland
- Intermountain Healthcare
- Lakeview Hospital Medical
- Layton City
- John E. Lindquist
- Kaysville City
- Layton City
- Larry H. & Gail Miller Family Foundation
- Merit Medical
- Sorenson Legacy Foundation
- Stewart Education Foundation
- Tanner Clinic
- Ogden Clinic
- Brad Walters
- Dr. & Mrs. Raymond Ward
- Zions Bank

Displaced Programs

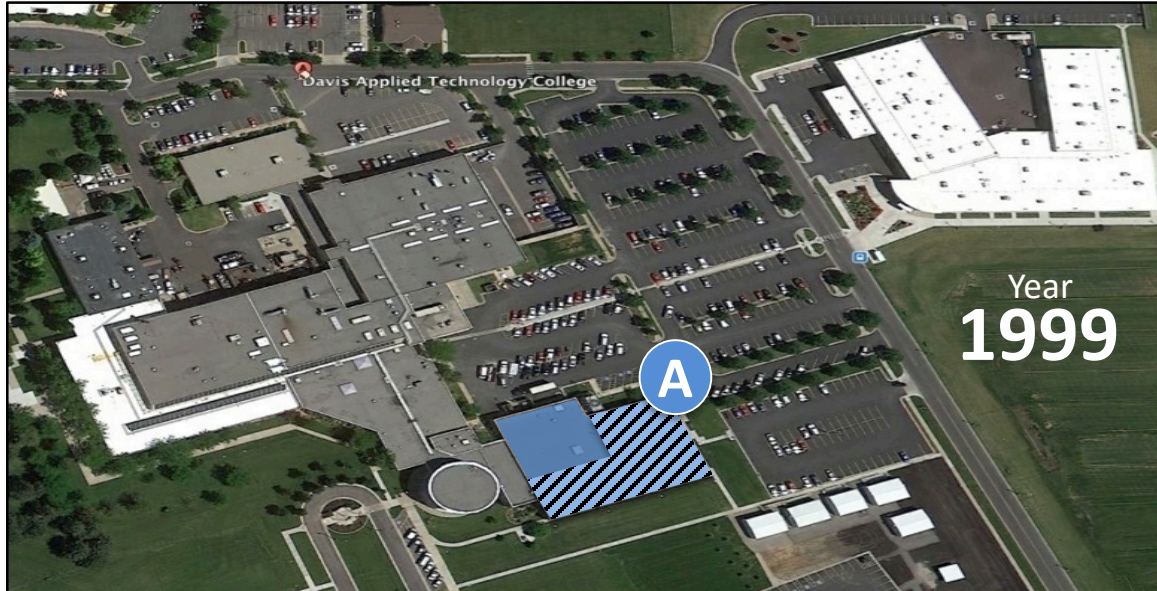
Original Building with 4 Healthcare Programs



GROWTH AND CAPACITY



BUILDING DEFICIENCIES



HEALTHCARE PROGRAM HEADCOUNT

1999	2017
1,092	1,793

12,274 Sq. Ft. used
by medical programs


A

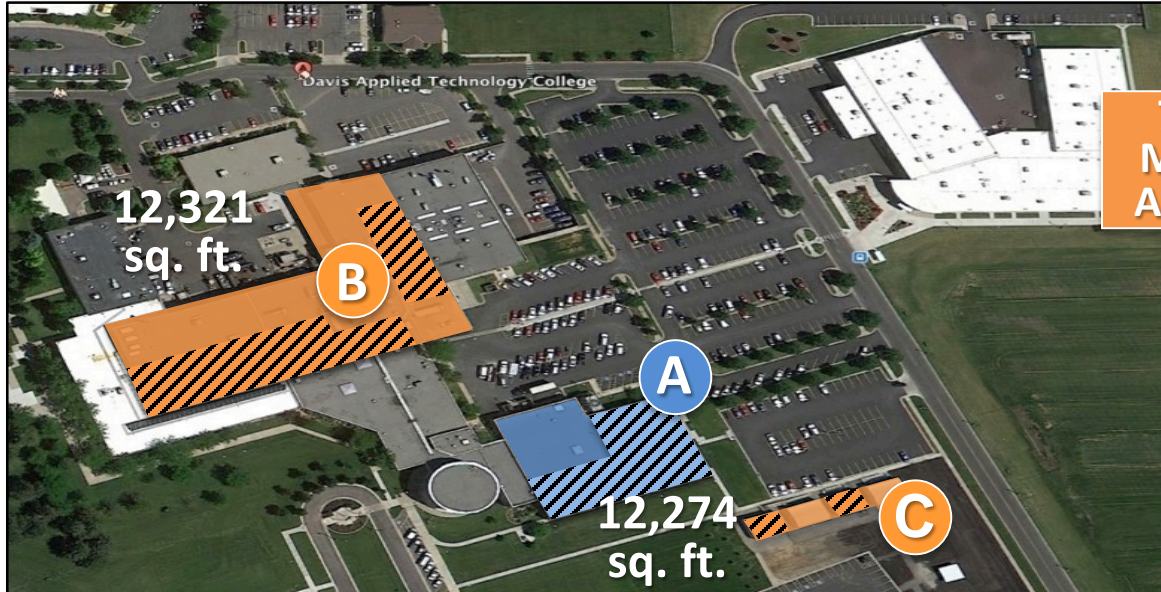
Dedicated Wing

- Practical Nurse
- Medical Assistant
- Dental Assisting
- Nurse Assistant

Displaced Programs

Now there are **11** Healthcare programs

-  GROWTH AND CAPACITY
-  BUILDING DEFICIENCIES



7.5 Miles Away



Freeport Center Y16 in Clearfield

8 Miles Away



Nurse Assistant program at Clearfield Job Corps

- A** Dedicated Wing
- Practical Nurse*
 - Medical Assistant*
 - Dental Assisting*
 - Nurse Assistant*

- B** Displaced Upstairs
- Health Information Technology
 - Nurse Assistant*
 - Pharmacy Technician
 - Surgical Technology
 - Radiology Practical Technician (limited scope)

- C** Displaced in Portables
- American Heart Association (CPR) Training Center
 - Phlebotomy

- D** Displaced Off Campus
- Emergency Medical Technician
 - Firefighter
 - Nurse Assistant*

*Indicates Original Programs in the Medical Wing Built in 1999
 – All other programs have been added after this date



PROGRAM RECONSTRUCTION COSTS SINCE 2007

Davis Tech has spent
approximately
\$798,000
on current facilities for
expanding programs



To maximize classroom
size, closets and hallways
have been converted to
classroom space



BUILDING DEFICIENCIES AND LIFE SAFETY CONCERNS



GROWTH AND CAPACITY
BUILDING DEFICIENCIES
COST EFFECTIVENESS



◀ **Offices** have been built in hallways

Overcrowded classrooms and Labs

▲ **Crowded offices** with privacy concerns



▲ **Portables** cost **4x** more to maintain than regular classrooms





Lack of Capacity

**NEED TO DOUBLE
ENROLLMENT IN**

MEDICAL ASSISTANT

PHARMACY TECHNICIAN

SURGICAL TECHNOLOGY

NURSE ASSISTANT

PRACTICAL/REGISTERED NURSE

- Last year, nearly **360** applications but only **90** accepted
- Need to add **2 additional cohorts** in next 2 years

Currently expanding

PHLEBOTOMY and **RADIOLOGY**
PRACTICAL TECHNICIAN

Classroom space prohibits more enrollment

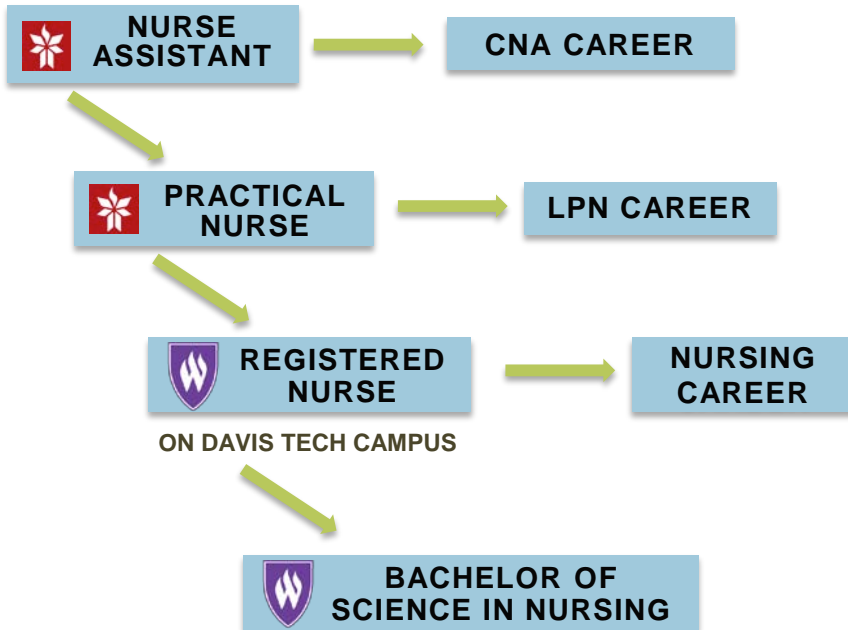


PARTNERSHIP



SUPPORT CRITICAL PROGRAMS
GROWTH AND CAPACITY

STACKABLE CREDENTIALS

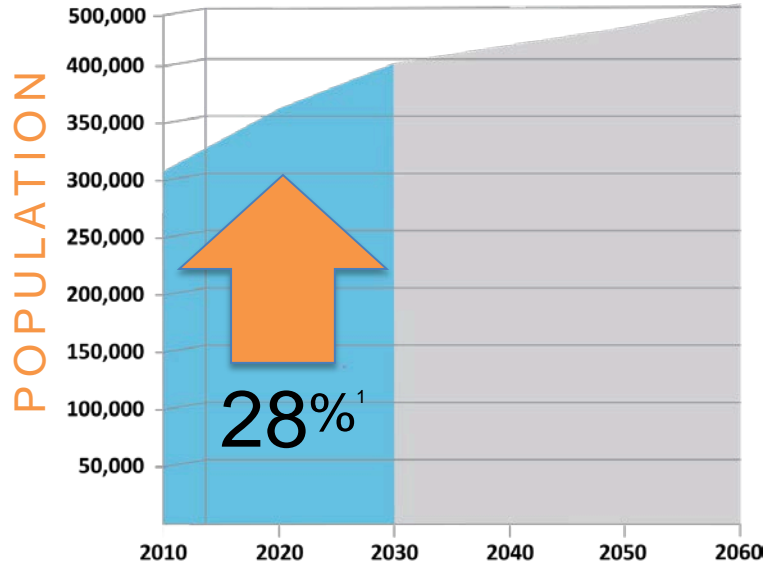


- Registered Nurse training provided **on the Davis Tech campus**
- **180** students at Davis Tech this past year
- **4 WSU faculty** on campus
- Weber State University uses **3 classrooms, 2 labs, 2 offices** and testing facilities



Davis County is Growing

3rd Largest
Populated County in Utah



Healthcare Jobs

31%

Projected Increase by 2024²

2,413 ▶ Total Facilities in
the Wasatch Front³

Facilities include: Hospitals, Physicians/Clinics, Ambulatory Surgical and
Emergency Centers, Dental Offices, Pharmacies and Nursing Care Facilities

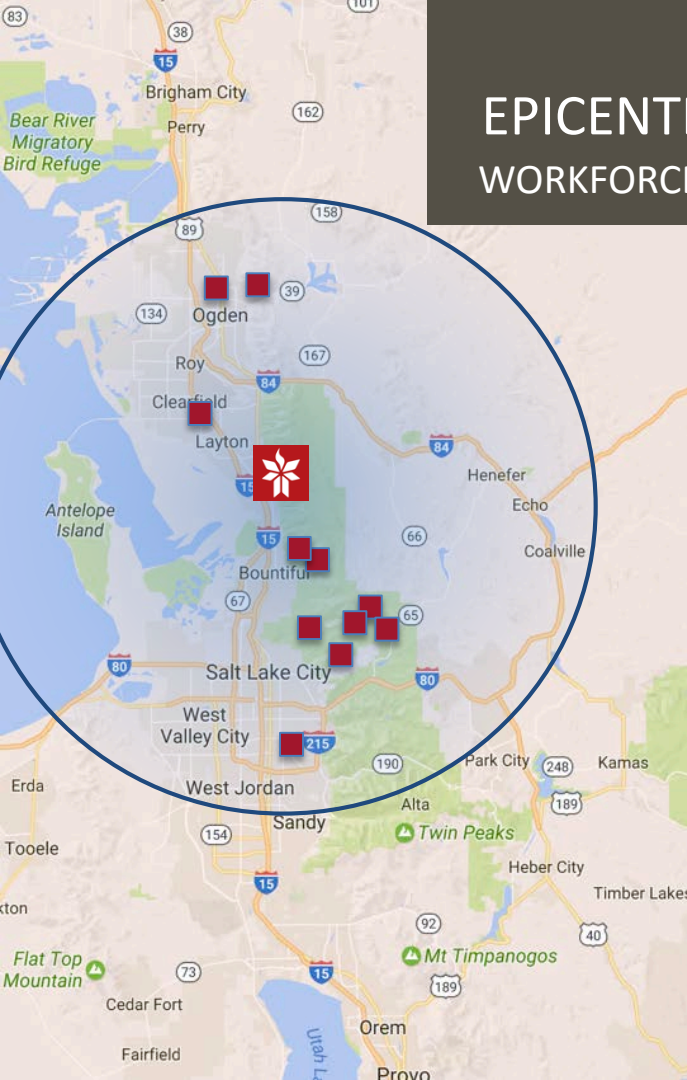
¹ Utah Population Estimates Committee; Utah Governor's Office of Management and Budget

² Utah Department of Workforce Services. 10 year projection from 2014

³ Utah Department of Workforce Services

EPICENTER OF HEALTHCARE TRAINING

WORKFORCE PIPELINE – Wasatch Front



Last year, **1,076** Davis Tech students participated in **externships and/or clinicals**, including these facilities:

- Intermountain Healthcare – McKay-Dee Hospital
- South Davis Community Hospital
- Primary Children’s Medical Center
- University of Utah Medical Center
- Davis Hospital and Medical Center
- Ogden Regional Medical Center
- Lakeview Hospital
- Intermountain Medical Center
- LDS Hospital
- Salt Lake Regional Medical Center
- Huntsman Cancer Institute

ONLY Practical Nurse
program accepted for clinical
training at **Primary Children’s
Hospital**

ONLY Dental Assisting
program accepted for clinical
training at the **University of
Utah**



Economic Impact

For one year

	MEDIAN WAGE*	EXPECTED STUDENT PLACEMENT	TOTAL WAGES
DENTAL ASSISTING	\$29,800	95	\$2,816,100
EMERGENCY MEDICAL TECHNICIAN	\$35,770	30	\$1,073,100
FIREFIGHTER	\$30,990	38	\$1,162,125
HEALTH INFORMATION TECHNOLOGY	\$32,780	90	\$2,950,200
MEDICAL ASSISTING	\$30,780	76	\$2,339,280
NURSE ASSISTANT	\$22,880	730	\$16,702,400
PHARMACY TECHNICIAN	\$36,640	146	\$5,349,440
PHLEBOTOMIST	\$25,650	40	\$1,026,000
PRACTICAL NURSE	\$45,560	120	\$5,453,532
RADIOLOGY PRACTICAL TECHNICIAN	\$40,830	40	\$1,633,200
SURGICAL TECHNOLOGY	\$36,810	34	\$1,251,540
WSU REGISTERED NURSE	\$59,210	120	\$7,087,437
Total Economic Impact to Communities			\$48,844,354

*Median wage data represents Ogden-Clearfield MSA Median Wage



New Healthcare Facilities

HOSPITALS IN DAVIS COUNTY



UNIVERSITY OF UTAH
HEALTH CARE
Farmington Health Center

**OPENED 2016 – Approximately
200 Nurses and Medical Technicians**



200,000 Sq. Ft.



**Intermountain®
Layton Hospital**

CLINICS NOW OPEN
Full Facilities Open in July 2018
Approximately 310 Nurses and Medical Technicians



300,000 Sq. Ft.

Additional Healthcare Facilities



EXPANSION OF EXISTING FACILITIES:

Davis Hospital: Women's Health Center, Emergency in Layton and Roy

Intermountain Healthcare: New Clinics in Kaysville and Syracuse, Expanding in Bountiful

Specialty Hospital of Utah: Formerly South Davis Community Hospital

Tanner Clinic: New clinics in East Layton, Layton, Roy and Syracuse

Ogden Clinic: New clinics in Farmington, Layton and Bountiful

Dental Clinics: Major Expansion of Dental Clinics in Davis County

Lakeview Hospital: ICU and Emergency Expansion





SIGNING BONUSES

UNIVERSITY OF UTAH
DAVIS HOSPITAL



\$300



MEDICAL ASSISTANTS

TANNER CLINIC



\$500



MEDICAL ASSISTANTS

ALSO SUPPORT SCHOLARSHIPS

LIFE CARE CENTER (Bountiful)
SOUTH DAVIS COMMUNITY HOSPITAL



\$1,000



CNAs

SOUTH DAVIS COMMUNITY HOSPITAL



\$3,000



NURSE

AVALON CARE CENTERS



\$500-\$2,000



CNAs





CRITICAL NEED OF WASATCH FRONT EMPLOYERS



SUPPORT
CRITICAL PROGRAMS

INCREASED PAY

DAVIS HOSPITAL

INTERMOUNTAIN HEALTHCARE

UNIVERSITY OF UTAH

→ **\$50,000/yr** → NURSE
Up \$10,000 from last year

INTERMOUNTAIN HEALTHCARE

→ **\$15.78/hr** → PHARMACY
TECHNICIAN
Up from \$12-13/hr

UNIVERSITY OF UTAH

→ **\$14.75/hr** → PHARMACY
TECHNICIAN
Up from \$14/hr

UNIVERSITY OF UTAH

INTERMOUNTAIN HEALTHCARE

→ **\$12.90-14.00/hr** → MEDICAL
ASSISTANTS

Various Long Term Care Facilities

→ **\$155/day** up to **\$22/hr** → CNAs

Enrollment Capacity vs. Industry Demand

Workforce Pipeline



45%

1,931 Current Annual Enrollment



78%

3,356 Enrollment Capacity
in New Building



4,286 Annual Job Openings

	ANNUAL ENROLLMENT	CAPACITY IN NEW BUILDING	PROJECTED INDUSTRY GROWTH
DENTAL ASSISTING	95	143	30%
EMERGENCY MEDICAL TECHNICIAN	137	206	34%
FIREFIGHTER	37	56	23%
HEALTH INFORMATION TECHNOLOGY	117	176	32%
MEDICAL ASSISTING	113	226	31%
NURSE ASSISTANT	744	1,488	33%
PHARMACY TECHNICIAN	128	256	30%
PHLEBOTOMIST	17	34	41%
PRACTICAL NURSE	270	351	21%
RADIOLOGY PRACTICAL TECHNICIAN	12	24	23%
SURGICAL TECHNOLOGY	81	162	35%
WSU REGISTERED NURSE	180	234	33%
	1,931	3,356	31%

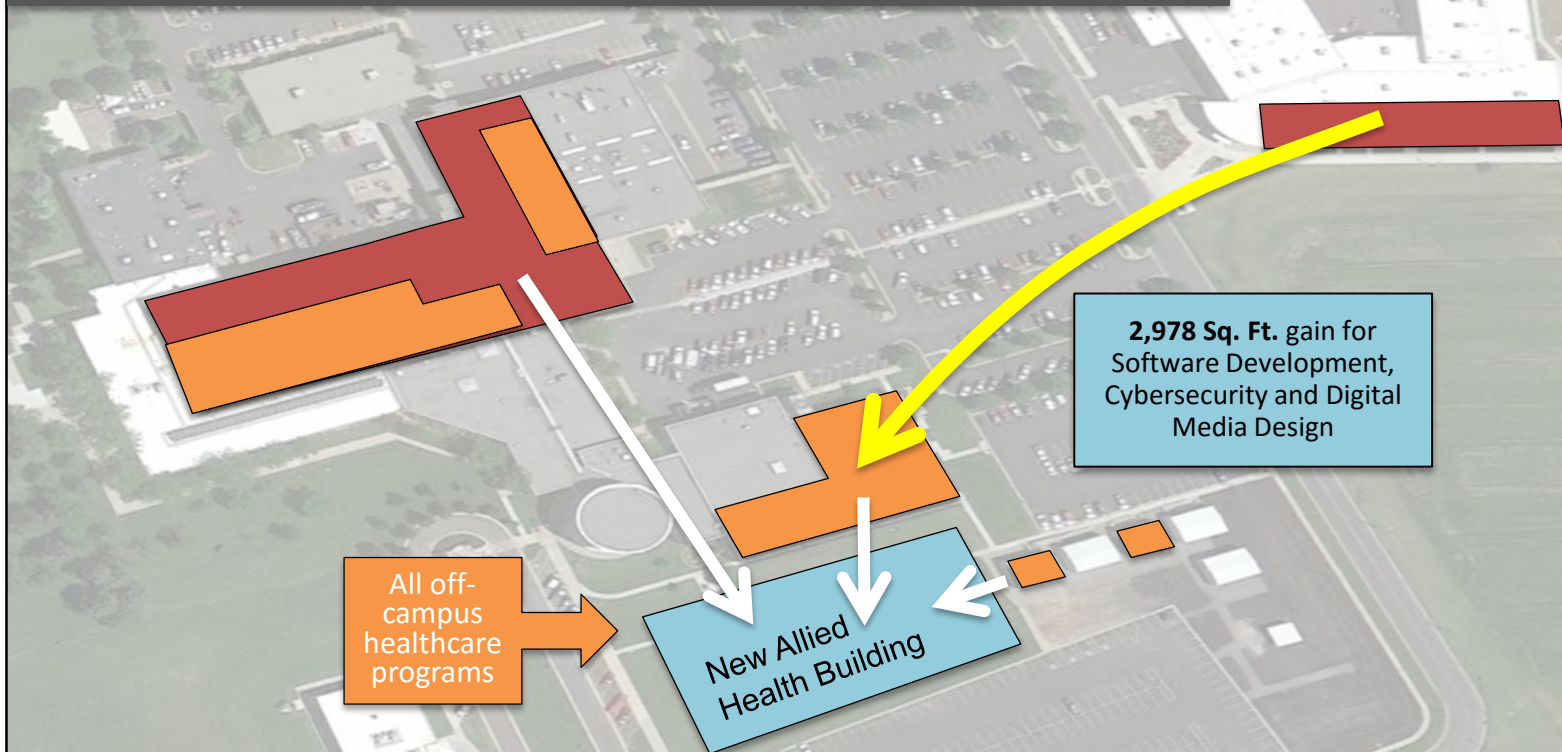




Backfill Programs



High demand **Information Technology** programs will move to larger areas which will allow growth



Mike Jensen

CEO, Davis Hospital and Medical Center



“Davis Tech is a great resource in our community. The health training programs offered at the Davis Tech are recognized statewide for their quality and commitment to students.

A new Allied Health building will allow the College to expand to meet the growing healthcare needs in Davis and Morgan Counties as well as throughout the region. With your help, Davis Tech will have the resources needed to continue to train the people in our community who will become our caregivers.”



Tim Pehrson

Vice President North Region, Intermountain Healthcare



*“The Davis Technical College has been a great partner with Intermountain Healthcare for many years. We rely on the Davis Tech to provide highly qualified and trained caregivers to work in our hospitals and clinics across the Wasatch Front. **We anticipate even greater needs as we expand our network** of caring in Davis County and **support the need for a new Davis Tech Allied Health Building**. A collaborative community approach to healthcare is needed to ensure a healthy tomorrow.”*





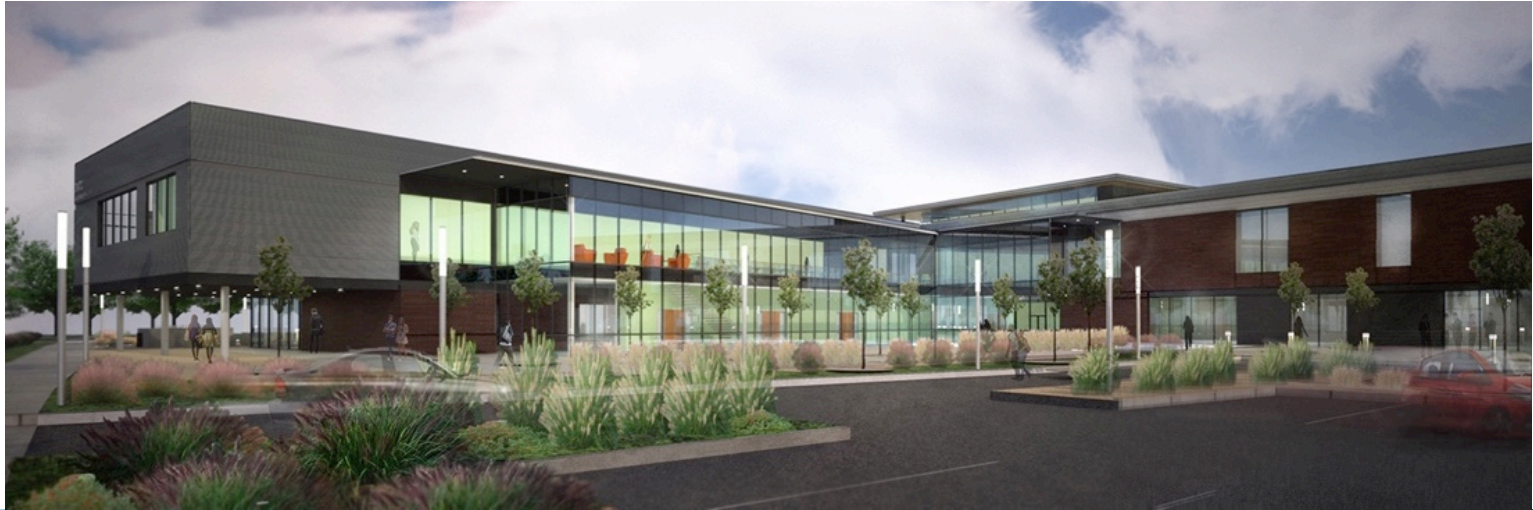
BUILDING READINESS



- Pre-programming complete
- Feasibility/impact study complete
- Permission to use existing Ogden Weber Tech classroom programming concepts
- Prepared to move quickly to complete full programming, design-build process

METHODSTUDIO^{INC.}

DAVIS TECHNICAL COLLEGE



THANK YOU