

Library Auditoriums and Meeting Rooms

City Name	Venue Description	Population	Number of Seats (Fixed)	Number of Seats (Non-Fixed)	Stage Size	Square Footage	Year Built	Construction Cost	Cost per Sq. Ft.	Number of Programs/Year	Number of Attendees/Year	Number of Parking Stalls Needed
Orem	Proposed Library Auditorium	97,714	500	0	3,630 sq. ft.	21,000 sq. ft	Not yet built	--	--	1,000 in current library facility	60,000 in current library facility	Parking is shared with other city buildings
Orem	Lakeridge Jr. High Auditorium	1,180 students	724	0	Approximately 1,632 sq. ft.	Approximately 10,323 sq. ft.	1974	--	--	12-14 productions (in addition to many more unofficial programs)	At least 35,600	Plenty of room for parking in the bus parking area
Provo	Library - Ballroom	114,801	0	500	No stage	4,320 sq. ft.	2001	\$22,600,000 for entire library renovation	--	50 library-sponsored events	12,000 - 15,000 in addition to private/nonprofit event attendees	400
Lehi	Library - Meeting Room	56,275	0	100	No stage	18,676 sq. ft. (entire library)	Room is old, exact building date unknown	--	--	648	30,000	Parking is shared with other city buildings
West Jordan	Viridian Events Center and Library	110,920	320 retractable (in the Viridian)	Banquet-style 450; Amphitheater 1,000	No stage, but they do have stage risers if needed	Large multipurpose room - 7,344 sq. ft. Outdoor amphitheater - 10,000+ sq. ft. Library - 20,000 sq. ft.	2012	\$18,000,000 (entire cost of new library, administration building, and events center)	Approximately \$482.01 per sq. ft. for entire building	386 (in the Viridian)	54,823 (in the Viridian)	230 (in addition to many surrounding lots)
Sandy	Library - Meeting Room	91,148	0	80 (40 new seats have been requested)	No stage	Unknown (official room capacity is 250)	1991	--	--	900	56,000	400 (entire library)
Murray	Hillcrest Auditorium	823 students	800	0	Large stage, measurements unknown	--	2015	\$34,000,000 (entire school)	--	90	Approximately 72,000	School parking lot is used. Parking lot has been sufficient for their needs.
Park City	Library - Auditorium	8,058	446	0	2,025 sq. ft. (the stage is not often used for productions due to lack of stage-lighting)	4,500 sq. ft. (excluding stage)	1928 (built as part of the high school)	--	--	Approximately 489	--	Street is used for overflow parking. Groups who reserve the auditorium are asked to park across the street.
Ogden	Southwest Branch Library in Roy, UT (Ogden library is currently closed for renovation)	Ogden- 84,316 Roy- 37,877	0	255 (retractable)	No stage	3,152 sq. ft.	2016	\$23,000,000 (entire cost of library)	--	Approximately 188	Approximately 12,000	228 (entire library)
Logan	Library - Jim Bridger Room	48,997	0	65	No stage	868 sq. ft.	1986	In 1986, the library moved into an old Sears department store. Exact cost to renovate building is unknown.	--	Approximately 286	5720 - 18,590	They do not have an exact estimate; parking is not a problem for them.
UVU	Library- Lecture Room	33,211	160	0	Small stage	190,000 sq. ft. (entire library)	2008	\$48,000,000 (entire cost of library)	\$252.63 per sq. ft. (entire library)	Approximately 156	--	Since mostly students and faculty attend events, parking is not a concern.
Utah State	Caine Performance Hall	28,118	440	0	--	20,000	2006	\$10,500,000	\$525 per sq. ft.	84 - 112	--	On-campus parking lots are used.
Salt Lake City	Library - Nancy Tessman Auditorium	193,744	300	0	Small curved stage (34' wide at front, 15' deep at center point)	3,631 sq. ft.	2000 - 2003	\$65,000,000 (entire building, furnishings, landscape, and exterior plaza)	--	269	--	600 (underground parking garage is owned by SLC Corporation and is managed by Diamond Parking)

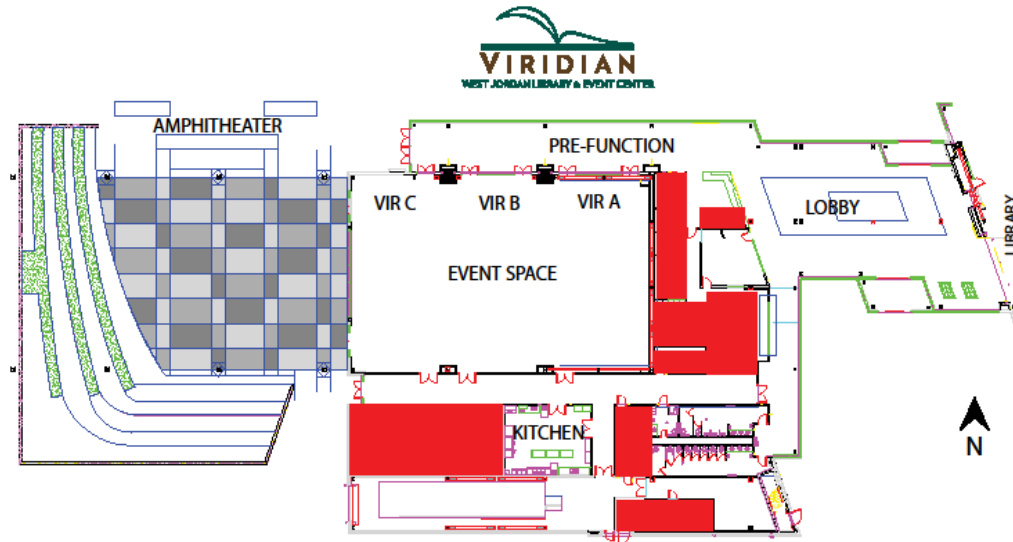
Orem City - Current Library



Provo City - Library Ballroom



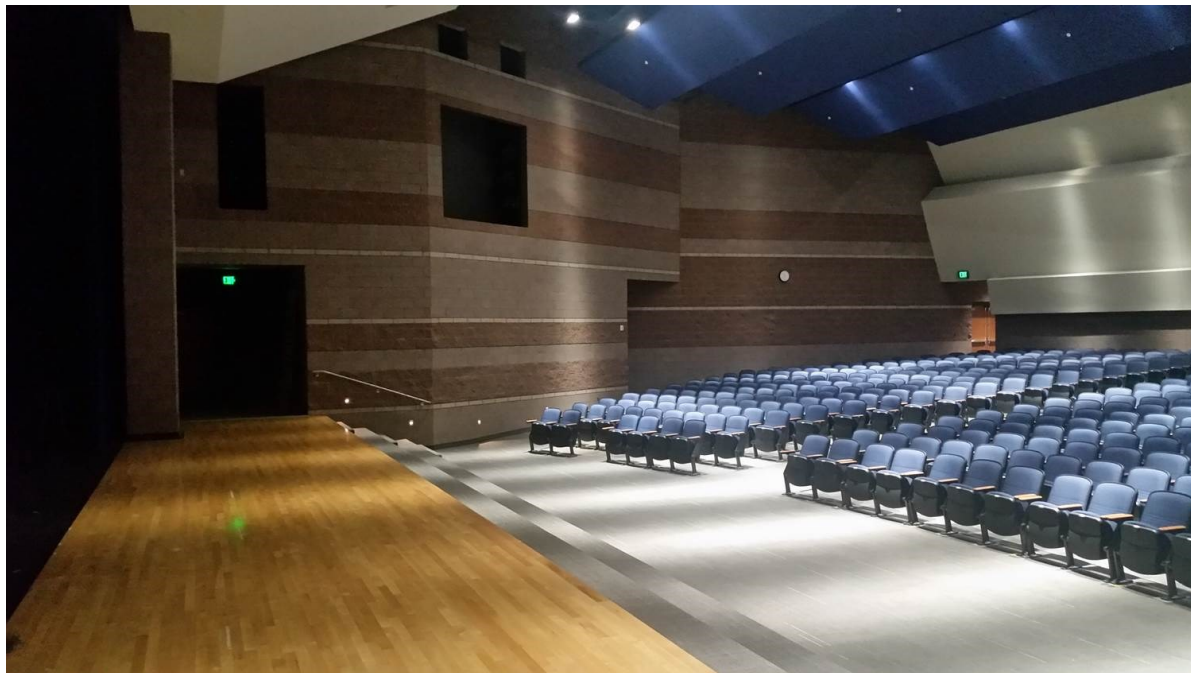
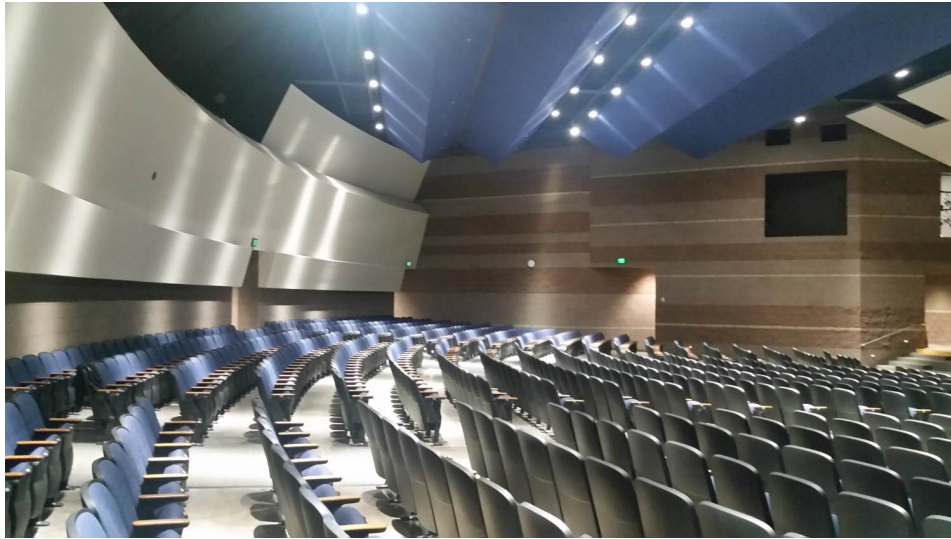
West Jordan - Viridian Events Center



DIMENSIONS	
AMPHITHEATER	EVENT SPACE
North End Cement: 91' x 69'	Combined: 102' x 72'
South End Cement: 61' x 69'	approx. 7,344 sq. ft.
Total Cement: approx. 5,244 sq. ft.	Individual Space : 34' x 72'
Total Amphitheater: approx. 10,000+ sq. ft.	(Vir A, B or C sectioned off)
	approx. 2,448 sq. ft.



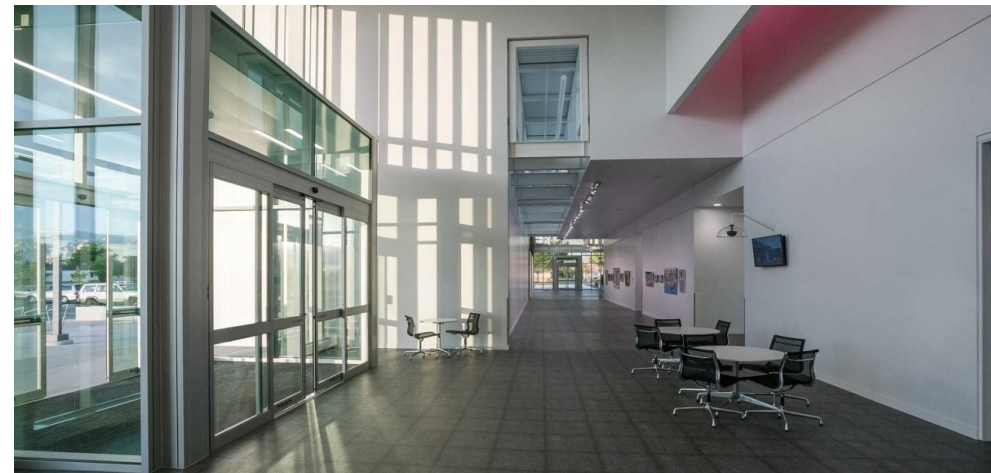
Murray - Hillcrest Jr. High Auditorium



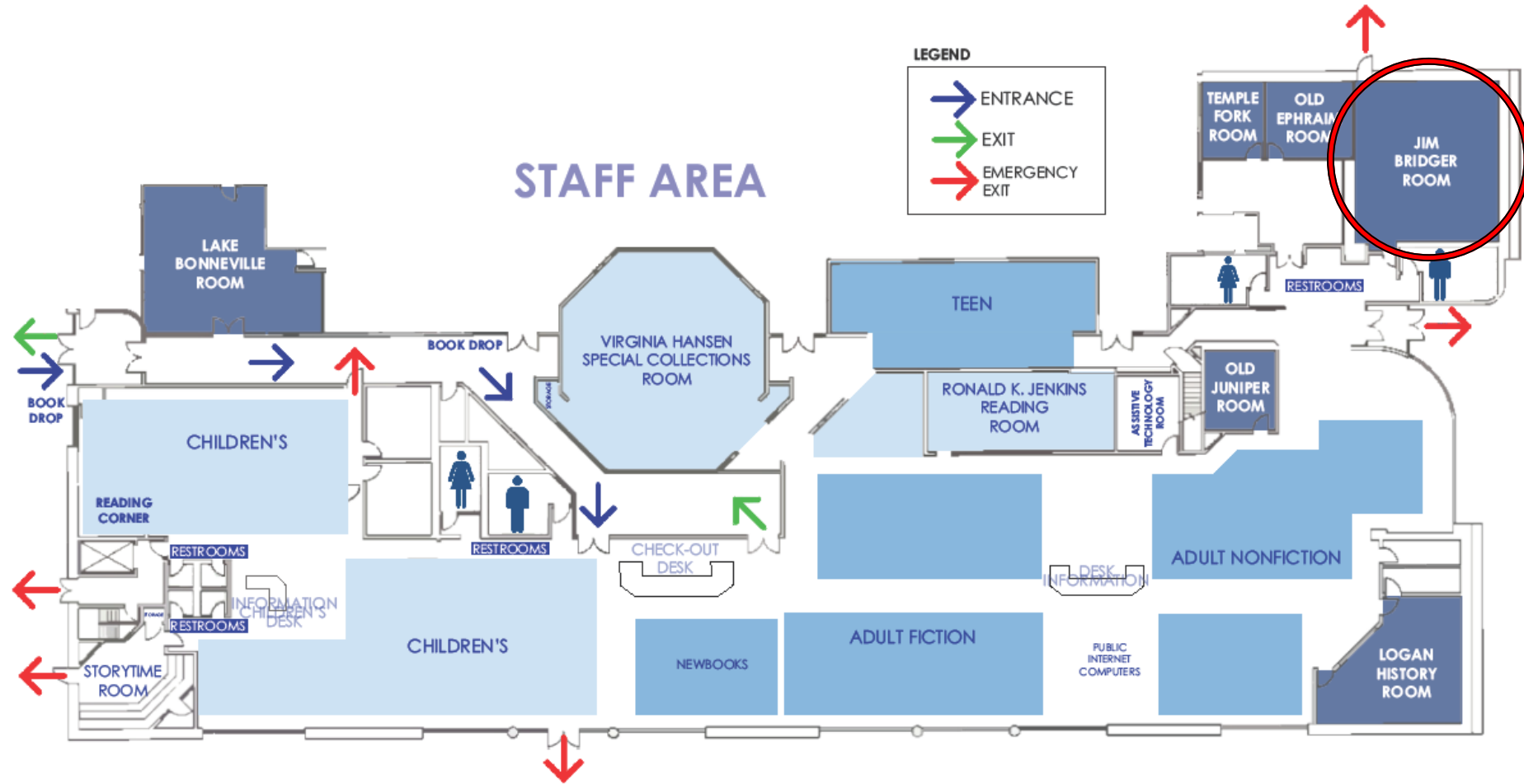
Park City - Library Santy Auditorium



Ogden - Southwest Branch Library



Logan - Library Jim Bridger Room



LOGAN LIBRARY FLOOR PLAN
Meeting Rooms Map

UVU - Library Lecture Room



Utah State - Caine Performance Hall



Salt Lake City Library - Nancy Tessman Auditorium



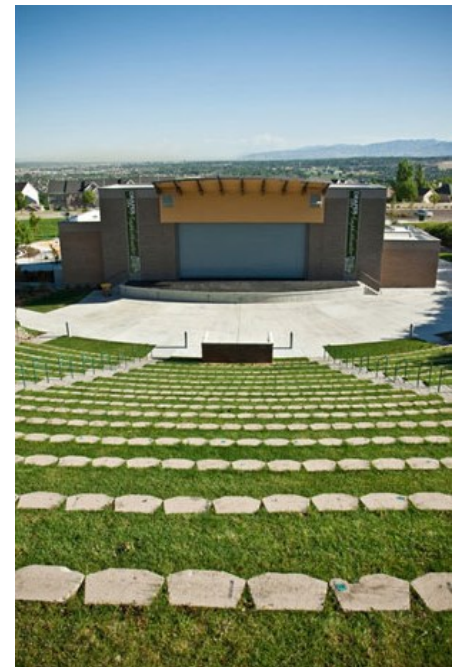
Outdoor Amphitheaters

City Name	Venue Description	Population	Number of Seats (Fixed)	Number of Seats (Non-Fixed)	Stage Size	Square Footage	Year Built	Construction Cost	Cost per Sq. Ft.	Number of Programs/Year	Number of Attendees/Year	Number of Parking Stalls Needed
Orem	SCERA Outdoor Amphitheater	97,714	0	4,000	2,700 sq. ft	26,000 sq. ft.	1984	--	--	--	63,500	Neighborhood streets, church parking lot, pool parking lot
Draper	Outdoor Ampitheatre	46,202	0	1800	1,774 sq. ft.	6,400 sq. ft. (main building only)	2010	\$1,200,000	Approximately \$187.50 per sq. ft.	11-15 in addition to daily rehearsals	Varies depending on the shows, weather, etc.	160
Sandy	Sandy Amphitheater	91,148	2000	750	5,241 sq. ft.	13,000 sq. ft.	1999 with additional seating added later	\$3,500,000	Approximately \$269.23 per sq. ft.	25-27	40,000	Two parking lots available (one on the east and one on the west)
Murray	Murray Park Amphitheater	48,822	650	0	1,200 - 1,344 sq. ft.	5,287 sq. ft. (excluding stage)	1985 (has undergone recent remodel)	Original Cost - \$200,000 Remodel - \$2.9 million	Remodel - approximately \$447.05 per sq. ft.	37 (with 30 days of rehearsals)	10,000 - 15,000 (excludes outside rentals)	85 (also share stalls with Murray Park's other venues)
Salt Lake City	Red Butte Garden Amphitheater	190,884	0	3000	3,200 sq. ft.	174,240 sq. ft. (not sure if this includes surrounding Rose Garden)	1980's but renovated most recently in 2007	\$6,000,000 (total renovation costs in 2007/2008 to venue and Rose Garden)	--	35-40	90,000	The amphitheatre rents parking spaces from University of Utah
Ivins	Tuacahn Amphitheater	8,132	1920	0	--	42,000 sq. ft. (entire facility including indoor theater, dance studio, recital hall, etc.)	1995	\$23,000,000 (most likely for the entire facility)	\$547.62 per sq. ft. (entire facility)	Approximately 131	265,000	--

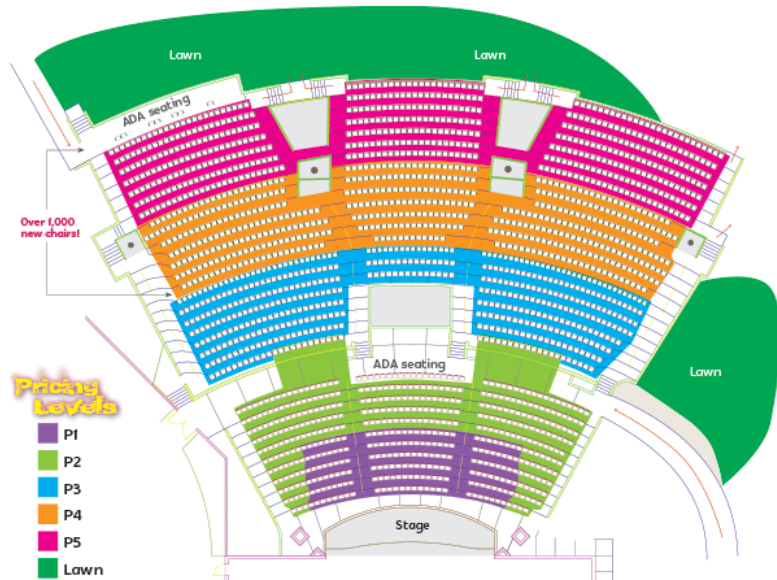
Orem City - SCERA Outdoor Amphitheater



Draper - Outdoor Amphitheater



Sandy - Amphitheater



Murray - Murray Park Amphitheater



Salt Lake City - Red Butte Garden Amphitheater



Ivins - Tuacahn Amphitheater

