



Washington City Council  
Workshop Meeting Agenda  
July 8, 2026

**PUBLIC NOTICE** is hereby given that the Washington City Council will hold a Public Electronic Workshop Meeting on **Wednesday, July 8, 2026 at 4:00 P.M.** hosted at Washington City Hall located at 111 North 100 East, Washington, Utah. The meeting will be broadcast via Youtube Live linked online at <https://washingtoncity.org/meetings>

1. Approval of the Agenda
2. Washington Parkway Roundabout
3. Parks and Recreation Impact Fee Facility Plan
4. Wheels Park Upgrades Discussion
5. E-Motorcycle Discussion
6. Adjournment

POSTED on this 2nd day of July 2026  
Tara Pentz, City Recorder

---

*In accordance with the Americans with Disabilities Act, Washington City will make reasonable accommodations to participate in the meeting. Requests for assistance can be made by calling the City Recorder at 656-6308 at least 24 hours in advance of the meeting to be held.*

---

# Washington Parkway Roundabout Briefing Document

## **DESCRIPTION:**

Presentation on the roundabout at Washington Parkway and N Grapevine Crossing Rd. With the proposal of a big box retailer coming in on Grapevine Crossing, we wanted to see what the traffic from that along with the existing traffic would look like.

We had a local engineering firm run a traffic model of the roundabout with the peak existing traffic along with the peak proposed traffic from this big box retailer. We also had them model the same traffic with a traffic signal instead of the roundabout.

In Public Works we would like to be proactive and remove the roundabout and put in a traffic signal before the big box retailer comes in. The traffic will only increase as development continues along Grapevine Crossing. The increase in traffic will make construction at this intersection difficult in the future.

## **PRESENTED BY:**

Paul Mogle, City Engineer

### Growth Rate

- Growth Rate of 4.5%
- 10-Year Planning Period

### Current vs. Projected Population

|                      |          |        |
|----------------------|----------|--------|
| Existing Population  | 2026     | 38,848 |
| Projected Population | 2036     | 60,331 |
| Change in Population | 10 Years | 21,483 |

### Current vs. Projected Households

|                          |          |        |
|--------------------------|----------|--------|
| Existing Occupied Units  | 2026     | 17,513 |
| Projected Occupied Units | 2036     | 27,197 |
| Change in Units          | 10 Years | 9,684  |

### Existing Parks Inventory

| Park Name               | Classification    | Area<br>(acres) |
|-------------------------|-------------------|-----------------|
| Ball Fields Park        | Community Park    | 14.7            |
| Boilers Park            | Community Park    | 3.2             |
| Canyon Park             | Community Park    | 1.4             |
| Dog Town Park           | Neighborhood Park | 1.8             |
| Dog Town Park Expansion | Neighborhood Park | 1.7             |
| George Washington Plaza | Community Park    | 0.6             |
| Grapevine Park          | Community Park    | 10.4            |
| Green Spring Park       | Neighborhood Park | 8.6             |
| Heritage Park           | Neighborhood Park | 12.3            |
| Highland Park           | Neighborhood Park | 7.2             |
| Nisson Park             | Neighborhood Park | 7.3             |
| Pine View Park          | Neighborhood Park | 7.9             |
| Razor Ridge Park        | Neighborhood Park | 3.3             |
| Shooting Star Park      | Neighborhood Park | 5.0             |
| Sienna Hills Park       | Neighborhood Park | 4.8             |
| Sullivan Park Phase I   | Community Park    | 10.6            |
| Sullivan Park Phase II  | Community Park    | 26.2            |
| Sunrise Valley Park     | Community Park    | 6.2             |
| Treasure Valley Park    | Neighborhood Park | 4.6             |
| Veterans Park           | Neighborhood Park | 2.8             |
| Wheels Park             | Community Park    | 14.0            |
| Total                   |                   | 154.7           |

## Existing Trails Inventory

| Trail System Name              | Length<br>(miles) | Trail System Name             | Length<br>(miles) |
|--------------------------------|-------------------|-------------------------------|-------------------|
| 300 E Trail                    | 0.39              | Nisson Park Trail             | 0.09              |
| 3650 S Trail                   | 0.28              | North Green Spring Trail      | 1.37              |
| Angels Point Trail             | 0.07              | Purple Rock Trail             | 0.14              |
| Black Canyon Trail             | 0.24              | Razor Ridge Park Trail        | 0.11              |
| Boilers Park Trail             | 0.10              | Rise at Coral Canyon Trail    | 0.63              |
| Brio Trail                     | 1.36              | Riverside School Trail        | 0.54              |
| Canal Trail                    | 2.77              | Rock Creek Trail              | 0.05              |
| Canyon Peak Trail              | 0.37              | Rockland Trail                | 0.03              |
| Coral Canyon Trail             | 4.55              | Rusted Hills Trail            | 0.14              |
| Cottonwood Wash Trail          | 1.12              | Schoolyard Trail              | 0.25              |
| Crimson Fields Trail           | 0.54              | Shinob Kibe                   | 0.63              |
| Crown King Trail               | 0.98              | Shooting Star Trail           | 0.81              |
| Desert Cliff Trail             | 0.05              | Sienna Hills Trail            | 0.90              |
| Finley Farms Trail             | 0.21              | Silver Mine Trail             | 0.15              |
| George Washington Blvd Trail   | 0.04              | Solente Trail                 | 0.14              |
| Grapevine Crossing Trail       | 1.46              | Stucki Farms Trail            | 1.64              |
| Hell Hole Trail                | 0.51              | Sunrise Valley Park Trail     | 0.49              |
| Heritage Park Trial            | 0.17              | Telegraph Trail               | 0.96              |
| High Point Trail               | 0.33              | Tortoise Way Trail            | 0.92              |
| Highland Park Loop Trail       | 2.06              | Treasure Valley Trail         | 0.32              |
| Highland Park South Loop Trail | 1.77              | Virgin River Trail            | 4.18              |
| Little San Francisco Trail     | 0.17              | Washington Fields Road Trail  | 0.49              |
| Long Valley Trail              | 1.25              | Washington Parkway Trail      | 2.28              |
| Main Street Trail              | 0.74              | Weatherby Way Trail           | 0.79              |
| Majestic Fields Trail          | 0.29              | West Washington Parkway Trail | 0.62              |
| Millcreek Trail                | 0.52              | Zion View Trail               | 0.03              |
| Total                          |                   | 41.04                         |                   |

## Existing Recreation Facilities Inventory

- Washington City Community Center = 110,000 square feet

### Parks Existing LOS

| Category           | LOS  | Unit                        |
|--------------------|------|-----------------------------|
| Apparent LOS       | 3.98 | <i>(acres/1,000 people)</i> |
| Private Parks LOS  | 1.24 |                             |
| School Parks LOS   | 2.49 |                             |
| Total Apparent LOS | 7.71 |                             |
| Target LOS         | 6.00 |                             |

### Trails Existing LOS

| Category           | LOS  | Unit                        |
|--------------------|------|-----------------------------|
| Apparent LOS       | 1.06 | <i>(miles/1,000 people)</i> |
| Total Apparent LOS | 1.06 |                             |
| Target LOS         | 0.70 |                             |

### Recreation Facilities Existing LOS

| Category     | LOS   | Unit                     |
|--------------|-------|--------------------------|
| Apparent LOS | 2,832 | <i>(SF/1,000 people)</i> |
| Eligible LOS | 2,832 |                          |
| Target LOS   | 3,108 |                          |

### NRPA Metrics

|  | Lower Quartile | Median | Upper Quartile |
|--|----------------|--------|----------------|
| Residents per Park                             | 1,229          | 1,798  | 2,894          |
| Acres per 1,000 Residents                      | 6.0            | 11.2   | 17.2           |
| Miles of Trail                                 | 6              | 10     | 22             |
| Average Community Size with Recreation Centers | 25,198         |        |                |

### NRPA Metric Comparison

|  | Washington City | NRPA Range     |
|--|-----------------|----------------|
| Residents Per Park                             | 1,850           | Median         |
| Acres Per 1,000 Residents                      | 9.79            | Lower Quartile |
| Miles of Trail                                 | 41.04           | Upper Quartile |
| Average Community Size with Recreation Centers | 38,848          | 29,722         |

Projected LOS assuming no future improvements

| Category                | Existing (2026) | Projected (2036) | Target |
|-------------------------|-----------------|------------------|--------|
| Population              | 38,848          | 60,331           | ~      |
| Parks LOS               | 7.71            | 4.74             | 6.00   |
| Trails LOS              | 1.06            | 0.68             | 0.70   |
| Recreation Facility LOS | 2,832           | 1,823            | 3,108  |

Parks Facilities Plan

| Park Name                           | Classification    | Area (acres) | Potential Construction Year |
|-------------------------------------|-------------------|--------------|-----------------------------|
| Long Valley Park                    | Neighborhood Park | 8.0          | 2027                        |
| Alaia Park                          | Neighborhood Park | 5.0          | 2028                        |
| Elephant Arch Trailhead/Park        | Neighborhood Park | 1.5          | 2029                        |
| Solente Park                        | Neighborhood Park | 4.0          | 2030                        |
| Dino Cliffs Trailhead/Park          | Neighborhood Park | 1.5          | 2031                        |
| Wright Ball Fields                  | Community Park    | 37.0         | 2031                        |
| Downtown Plaza                      | Community Park    | 1.0          | 2032                        |
| Washington Dome Trailheads          | Community Park    | 3.0          | 2033                        |
| Historic Canal Trailhead            | Community Park    | 1.0          | 2034                        |
| Grapevine Crossing Plaza            | Community Park    | 3.0          | 2035                        |
| Kirkland Fields Park                | Community Park    | 2.0          | 2037                        |
| Adams Park                          | Community Park    | 4.0          | 2038                        |
| Veterans Park Improvements          | Neighborhood Park | 0.0          | 2039                        |
| Mill Creek Gorge Nature Park        | Neighborhood Park | 4.5          | 2042                        |
| Cottonwood Coral Canyon Nature Park | Community Park    | 10.0         | 2045                        |
| <i>Existing Debt</i>                |                   |              |                             |
| Wheels Park                         | Community Park    | 14.0         | 2025                        |
| Totals                              |                   | 99.50        |                             |

10-Year Planning Period Parks Facilities Plan

| Park Name                    | Area (acres) | 10-Year Planning Horizon    |                         |   |
|------------------------------|--------------|-----------------------------|-------------------------|---|
|                              |              | Potential Construction Year | Impact Fee Eligible (%) | Impact Fee Eligible Acreage to be Constructed |
| Long Valley Park             | 8.0          | 2027                        | 100%                    | 8.0   |
| Alaia Park                   | 5.0          | 2028                        | 100%                    | 5.0   |
| Elephant Arch Trailhead/Park | 1.5          | 2029                        | 100%                    | 1.5   |
| Solente Park                 | 4.0          | 2030                        | 100%                    | 4.0   |
| Dino Cliffs Trailhead/Park   | 1.5          | 2031                        | 100%                    | 1.5   |
| Wright Ball Fields           | 37.0         | 2031                        | 100%                    | 37.0  |
| Downtown Plaza               | 1.0          | 2032                        | 100%                    | 1.0   |
| Washington Dome Trailheads   | 3.0          | 2033                        | 100%                    | 3.0   |
| Historic Canal Trailhead     | 1.0          | 2034                        | 100%                    | 1.0   |
| Grapevine Crossing Plaza     | 3.0          | 2035                        | 0%                      | 0.0   |
| Totals                       | 65.0         |                             |                         | 62.0  |

## Trails Facilities Plan

| Trail Name                       | Classification | Trail Length<br>(miles) | Potential<br>Construction<br>Year |
|----------------------------------|----------------|-------------------------|-----------------------------------|
| Millcreek Trail Extension        | Paved Trail    | 2.61                    | 2027                              |
| Nisson Hill Trail                | Paved Trail    | 0.23                    | 2027                              |
| Millcreek Springs Crossing Trail | Paved Trail    | 0.16                    | 2028                              |
| Long Valley Trail Extension      | Paved Trail    | 0.85                    | 2028                              |
| Solente Trail                    | Paved Trail    | 1.30                    | 2028                              |
| North Via Del Sol Trail          | Paved Trail    | 0.11                    | 2029                              |
| West Virgin River Trail          | Paved Trail    | 1.76                    | 2029                              |
| Washington Dome View Trail       | Paved Trail    | 0.71                    | 2029                              |
| Long Valley Trail #3             | Paved Trail    | 1.16                    | 2030                              |
| Majestic Loop Trail              | Paved Trail    | 1.28                    | 2030                              |
| Washington Dome Trail            | Paved Trail    | 1.38                    | 2030                              |
| South Main Street Trail          | Paved Trail    | 0.58                    | 2031                              |
| Pinyon Pass Trail                | Paved Trail    | 1.03                    | 2031                              |
| Shooting Star Trail Extension    | Paved Trail    | 0.31                    | 2031                              |
| Juniper Spur                     | Unpaved Trail  | 0.43                    | 2032                              |
| Ridge Trail                      | Unpaved Trail  | 2.00                    | 2033                              |
| Sandstone Loop                   | Unpaved Trail  | 0.63                    | 2033                              |
| Northern Parkway Trail           | Paved Trail    | 1.59                    | 2034                              |
| Washington Dome Connector Trail  | Paved Trail    | 0.90                    | 2034                              |
| Iron Sands                       | Unpaved Trail  | 0.56                    | 2035                              |
| Indian Springs Trail             | Paved Trail    | 0.41                    | 2036                              |
| Coyote Run                       | Unpaved Trail  | 1.40                    | 2037                              |
| Painted Bluff                    | Unpaved Trail  | 0.45                    | 2037                              |
| Crestline Extension Trail #1     | Paved Trail    | 0.10                    | 2037                              |
| Crestline Extension Trail #2     | Paved Trail    | 0.10                    | 2037                              |
| Crestline Extension Trail #3     | Paved Trail    | 0.10                    | 2037                              |
| Desert Bloom                     | Unpaved Trail  | 0.31                    | 2037                              |
| Grapevine Trail                  | Paved Trail    | 0.23                    | 2037                              |
| Pecon Trail                      | Paved Trail    | 0.33                    | 2037                              |
| Rock Spur                        | Unpaved Trail  | 0.33                    | 2037                              |
| Sunset Connector                 | Unpaved Trail  | 0.15                    | 2037                              |
| Tortoise Traverse                | Unpaved Trail  | 0.55                    | 2037                              |
| Warner Valley Trail              | Paved Trail    | 0.81                    | 2037                              |

|                                  |               |       |      |
|----------------------------------|---------------|-------|------|
| Quail Ridge Drive Trail          | Paved Trail   | 0.24  | 2038 |
| Crestline Connector Trail        | Paved Trail   | 1.38  | 2038 |
| Echo Canyon                      | Unpaved Trail | 0.59  | 2038 |
| Buena Vista Trail                | Paved Trail   | 1.29  | 2038 |
| Long Valley Trail #2             | Paved Trail   | 1.25  | 2038 |
| South SITLA Block                | Paved Trail   | 0.62  | 2038 |
| Riverside School Trail Extension | Paved Trail   | 0.50  | 2038 |
| East Virgin River Trail          | Paved Trail   | 1.28  | 2038 |
| West Mesa Connector              | Unpaved Trail | 0.18  | 2038 |
| Hurricane City Connector         | Paved Trail   | 0.61  | 2039 |
| 300 N Trail                      | Paved Trail   | 0.26  | 2039 |
| 3650 S Trail Ext                 | Paved Trail   | 1.70  | 2039 |
| Bramble Way Trail                | Paved Trail   | 0.68  | 2039 |
| Cottonwood Wash Trail Ext        | Paved Trail   | 0.95  | 2039 |
| Southern Parkway Trail           | Paved Trail   | 4.44  | 2039 |
| St. George City Connector        | Paved Trail   | 2.45  | 2040 |
| Three Rivers Trail System        | Paved Trail   | 0.36  | 2040 |
| Washington Parkway Trail         | Paved Trail   | 1.20  | 2040 |
| Highland Park Loop Trail         | Paved Trail   | 0.43  | 2041 |
| Majestic Drive Trail             | Paved Trail   | 0.50  | 2041 |
| North SITLA Block Trail          | Paved Trail   | 3.05  | 2041 |
| Southern Parkway Connector Trail | Paved Trail   | 3.26  | 2043 |
| 200 S Trail                      | Paved Trail   | 0.30  | 2042 |
| Hell Hole Trail Extension        | Paved Trail   | 0.15  | 2042 |
| Rio Vista Trail                  | Paved Trail   | 0.33  | 2042 |
| State Street Trail               | Paved Trail   | 0.86  | 2042 |
| Pine View Park Trail             | Paved Trail   | 0.48  | 2043 |
| Telegraph Trail Ext              | Paved Trail   | 2.46  | 2043 |
| South Nichols Peak Trail         | Paved Trail   | 1.47  | 2044 |
| Stucki Farms Trail Ext           | Paved Trail   | 4.45  | 2044 |
| Warm Spring Park Trail           | Paved Trail   | 0.60  | 2044 |
| Canal Trail Ext                  | Paved Trail   | 4.31  | 2045 |
| Grapevine Crossing Trail         | Paved Trail   | 0.92  | 2046 |
| Southern Parkway Connector       | Paved Trail   | 0.50  | 2047 |
| Totals                           |               | 68.90 |      |

\*Trails highlighted in green are part of the Washington Dome Feasibility Study Trails

## 10-Year Planning Period Trails Facilities Plan

| Trail System Name                | Length (miles) | 10-Year Planning Horizon    |                         |   |
|----------------------------------|----------------|-----------------------------|-------------------------|---|
|                                  |                | Potential Construction Year | Impact Fee Eligible (%) | Impact Fee Eligible Mileage to be Constructed |
| Millcreek Trail Extension        | 2.61           | 2027                        | 100%                    | 2.61  |
| Nisson Hill Trail                | 0.23           | 2027                        | 100%                    | 0.23  |
| Millcreek Springs Crossing Trail | 0.16           | 2028                        | 100%                    | 0.16  |
| Long Valley Trail Extension      | 0.85           | 2028                        | 100%                    | 0.85  |
| Solente Trail                    | 1.30           | 2028                        | 100%                    | 1.30  |
| North Via Del Sol Trail          | 0.11           | 2029                        | 100%                    | 0.11  |
| West Virgin River Trail          | 1.76           | 2029                        | 100%                    | 1.76  |
| Washington Dome View Trail       | 0.71           | 2029                        | 100%                    | 0.71  |
| Long Valley Trail #3             | 1.16           | 2030                        | 100%                    | 1.16  |
| Majestic Loop Trail              | 1.28           | 2030                        | 100%                    | 1.28  |
| Washington Dome Trail            | 1.38           | 2030                        | 100%                    | 1.38  |
| South Main Street Trail          | 0.58           | 2031                        | 100%                    | 0.58  |
| Pinyon Pass Trail                | 1.03           | 2031                        | 100%                    | 1.03  |
| Shooting Star Trail Extension    | 0.31           | 2031                        | 100%                    | 0.31  |
| Juniper Spur                     | 0.43           | 2032                        | 100%                    | 0.43  |
| Ridge Trail                      | 2.00           | 2033                        | 100%                    | 2.00  |
| Sandstone Loop                   | 0.63           | 2033                        | 100%                    | 0.63  |
| Northern Parkway Trail           | 1.59           | 2034                        | 100%                    | 1.59  |
| Washington Dome Connector Trail  | 0.90           | 2034                        | 100%                    | 0.90  |
| Iron Sands                       | 0.56           | 2035                        | 100%                    | 0.56  |
| Indian Springs Trail             | 0.41           | 2036                        | 100%                    | 0.41  |
| Totals                           | 20.0           |                             |                         | 20.0  |

## Recreation Facilities Plan

| Recreation Facility Name                   | Classification      | Size (square feet) | Potential Construction Year |
|--|---------------------|--------------------|-----------------------------|
| Washington Elementary Satellite Rec Center | Recreation Facility | 50,000             | 2038                        |
| Wheels Park Satellite Rec Center           | Recreation Facility | 10,000             | 2041                        |

Projected LOS with 10-Year Facilities Plan

| Category                | Existing (2026) | Projected (2036) | Target |
|-------------------------|-----------------|------------------|--------|
| Population              | 38,848          | 60,331           | ~      |
| Parks LOS               | 7.71            | 5.76             | 6.00   |
| Trails LOS              | 1.06            | 1.01             | 0.70   |
| Recreation Facility LOS | 2,832           | 1,823            | 3,108  |

Total Impact Fee Eligible Costs

| Impact Fee Analysis Summary                 |               |
|---|---------------|
| Parks Subtotal                              | \$ 41,405,158 |
| Trails Subtotal                             | \$ 11,711,400 |
| Recreation Facility Subtotal                | \$ -          |
| Parks & Recreation IFFP/IFA Update Subtotal | \$ 90,100     |
| Total                                       | \$ 53,206,658 |

Impact Fee Calculation

| Description                    | Amount        |
|--------------------------------|---------------|
| Existing Housing Units (2026)  | 17,513        |
| Projected Housing Units (2036) | 27,197        |
| New Housing Units              | 9,684         |
| Impact Fee Costs Grand Total   | \$ 53,206,658 |
| Impact Fee / Housing Unit      | \$ 5,494      |

# Briefing Document

## Wheels Park Addition Options

This proposal outlines various enhancements for Wheels Park to accommodate heavy usage and improve user experience. The plan encompasses improvements in comfort, functionality, security, and infrastructure.

**Presenter:** Paul Walker, Jeremy Redd

**Submitted By:** Paul Walker

### Financial Summary

The total estimated investment for the proposed additions is in the range of **\$300,000** to **\$350,000**. This figure includes estimated costs for installation and freight where applicable.

Impacted Fund: Capital Projects Fund

### Proposed Additions

#### Shade Structures

Estimated Cost: **\$210,000**

This includes twelve cantilevered shade structures in various sizes (12'x12' to 20'x20'). These are proposed for existing benches and new picnic areas, though placement is subject to lighting and infrastructure constraints.

#### Site Furnishings & Picnic Areas

Estimated Cost: **\$50,000**

To support heavy use, the plan includes ten benches, twelve garbage cans, and six picnic tables. This also covers the construction of concrete pads for picnic tables, garbage cans, and benches as needed.

## Security

Estimated Cost: **\$33,000**

Security enhancements feature 800 feet of black 6' black pvc coated chain-link fencing with three 12' gates to secure the southern boundary.

## Infrastructure

Estimated Cost: **\$24,000**

This includes three powder-coated, lit flag poles (one 40' and two 35').

Estimated Cost: **\$20,000**

A new entrance archway is proposed for the skate area entrance.

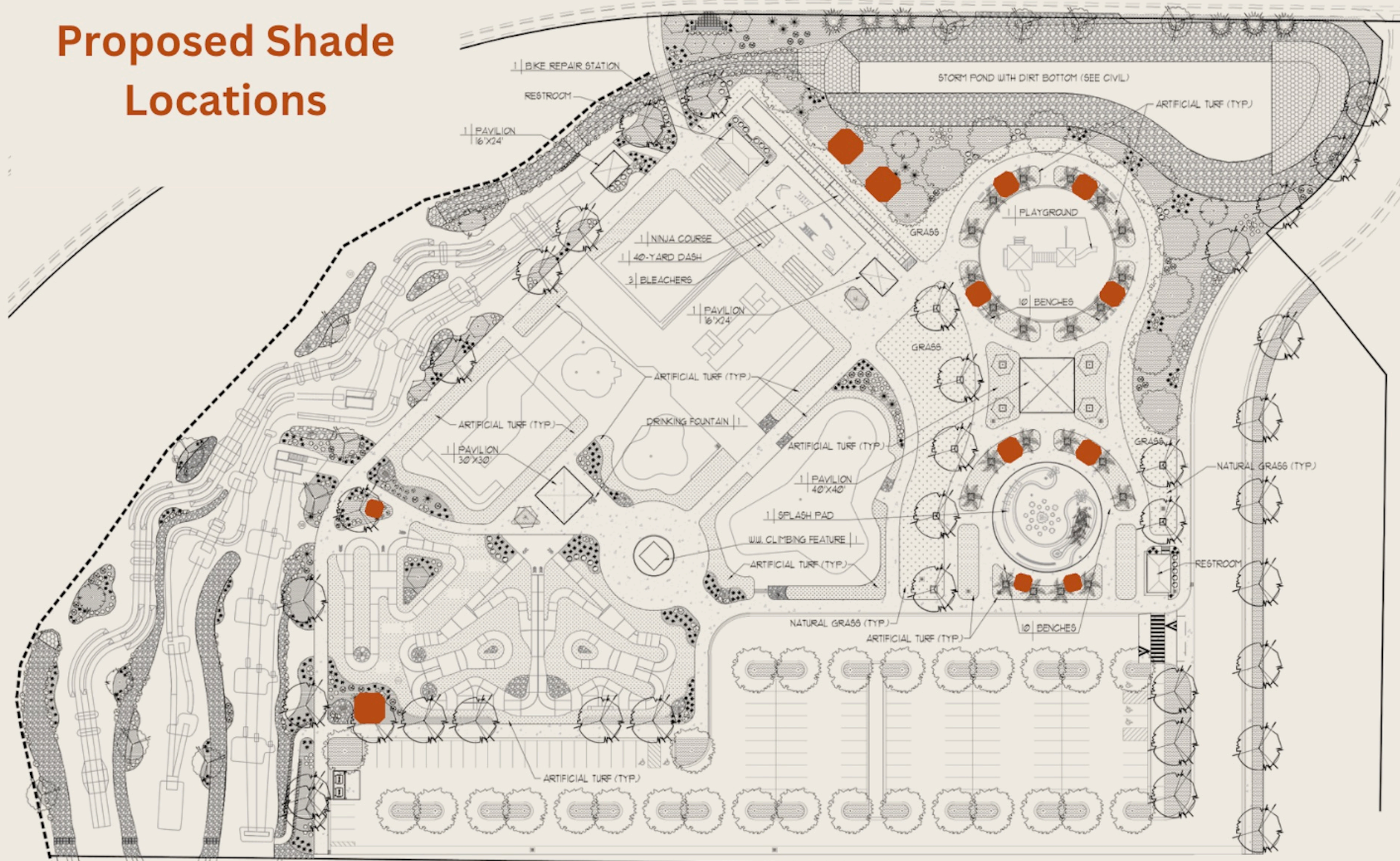
Estimated Cost: Awaiting bid

Necessary renovation of the high-traffic pump track area, for which final bids are currently pending.

## Next Steps

Obtain feedback and final direction on proposed additions.

# Proposed Shade Locations







WELCOME TO

# WASHINGTON WHEELS PARK

WASHINGTON, UTAH



