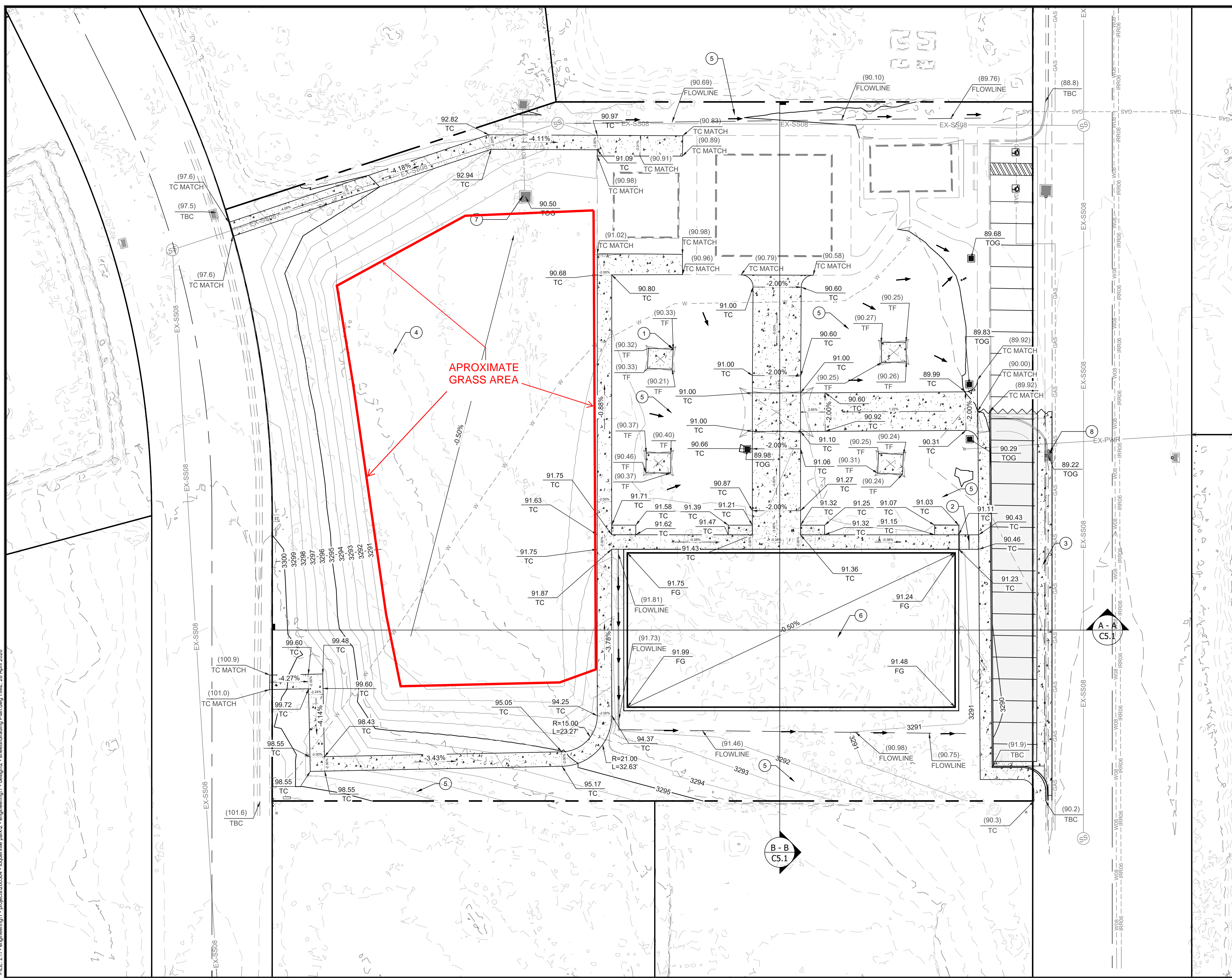


FILE: Z11 - engineering11 - projects\260304 - toquerville park\2 - sheets\grading plan.dwg TIME: 28 April 2026



LEGEND

- ① EXISTING PAVILION FOOTING (TYP) - SEE DETAIL DT1.0
- ② STAIR/STEP - SEE DETAIL DT1.0
- ③ 6" CROSS GUTTER - SEE DETAIL DT1.0
- ④ GRASS SURFACE
- ⑤ CHAT (DG) SURFACE
- ⑥ SEE PLANS FROM TARKET SPORTS DESIGN FOR PICKLE BALL COURT
- ⑦ GRATE TO BE LOWERED TO 3290.5'
- ⑧ EXISTING GRATE TO BE REPLACED BY REGULAR 2X3 GRATE -SEE DETAILS DT1.1 DT1.1

SITEWORKS ENGINEERING

52 S 850 W SUITE 103, HURRICANE, UTAH 84737
 P: 435-635-8143 | E: INFO@SITEWORKS-ENG.COM

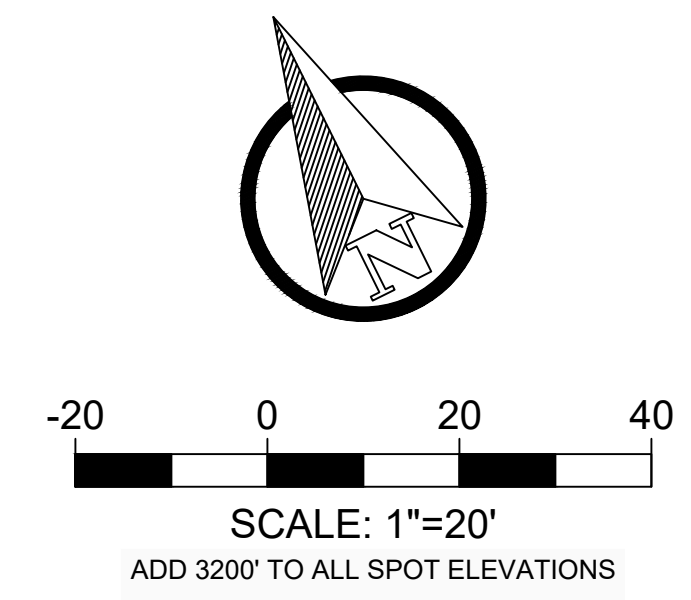


DESIGNED BY KM
 DRAWN BY MB
 CHECKED BY LP

NOTES

GRADE IS TO FINAL SURFACE

CITY OF TOQUERVILLE
 GRADING PLAN
 WESTFIELD PARK
 1280 S WESTFIELD RD, TOQUERVILLE, UT 84774



REV.	DATE	DESCRIPTION	BY

DATE: 28 APRIL 26
 PROJ. #: 260304 PAGE #: C5.0