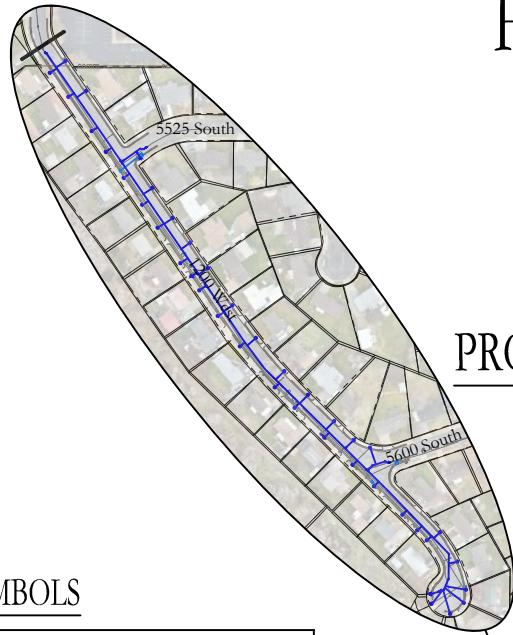


# 1200 WEST WATERLINE FROM 5450 SOUTH TO 5650 SOUTH (CUL-DE-SAC) RIVERDALE CITY, WEBER COUNTY, UTAH

PUBLIC WORKS DIRECTOR  
SHAWN DOUGLAS

**CEC**  
CIVIL ENGINEERING  
CONSULTANTS, PLLC.  
5141 SOUTH 1500 WEST  
RIVERDALE, UT 84405  
801.866.0550

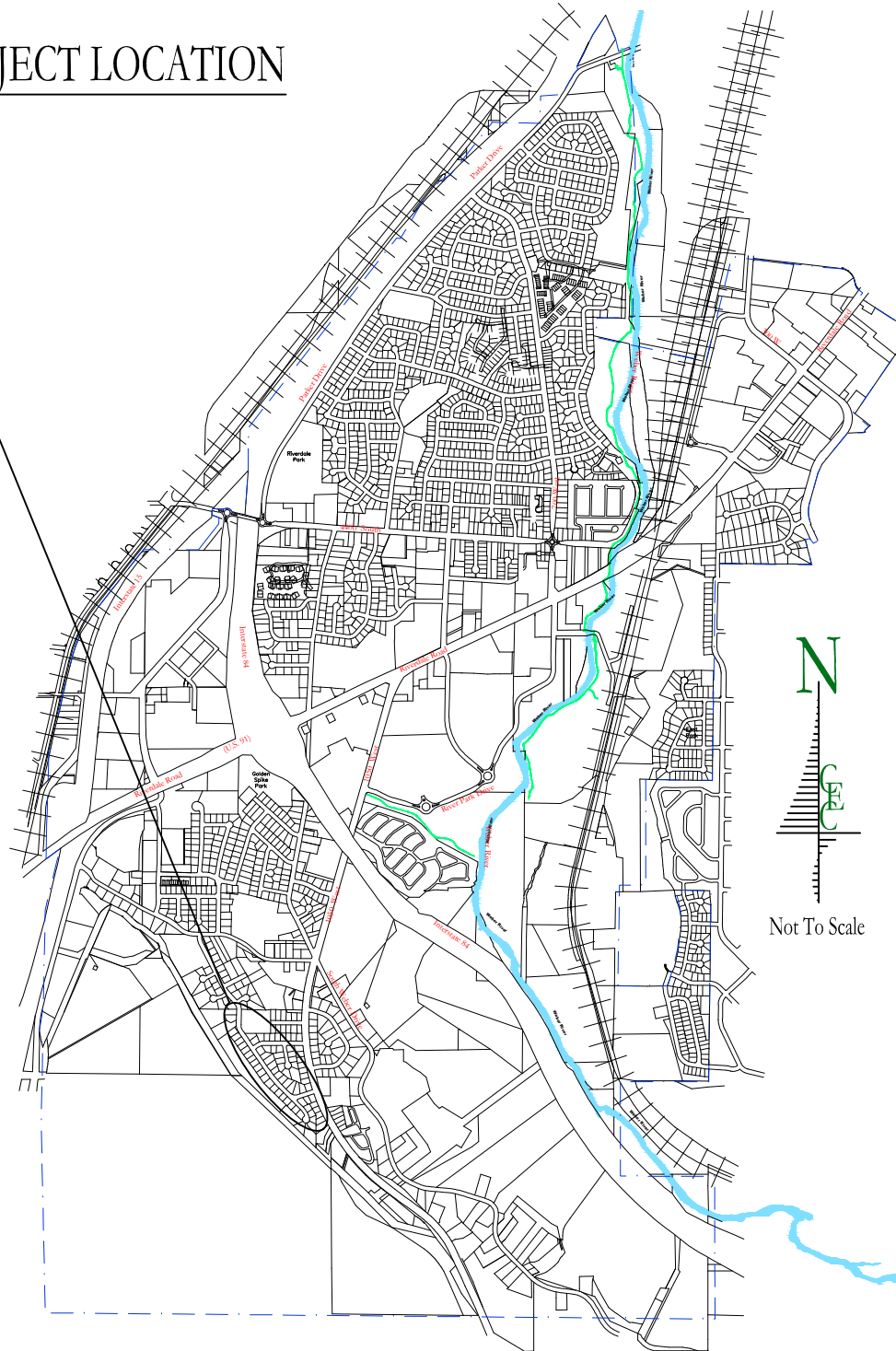


PROJECT LOCATION

### LEGEND AND SYMBOLS

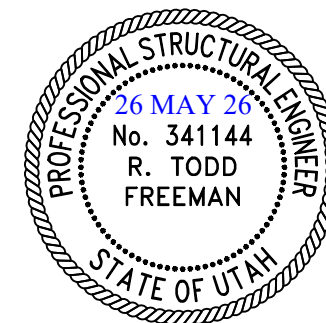
Centerline of road	---
Contour line	-1234
Curb & gutter	====
Easement line	----
Fence	x x x x x x x x
Lot line	----
Phase/boundary line	====
Right of way line	- - - -
Section corner & line	⊙
Culinary water manhole & pipe	WM
Fiber optic box & line	FO
Gas manhole & line	GAS
Irrigation manhole and pipe	IRR
Land drain manhole & pipe	LD
Power pole and line	P
Sanitary sewer manhole & pipe	SS
Storm water manhole & pipe	SW
Telephone pedestal & line	TELE
Fire hydrant	⦿
Storm water catch basin	■
Street sign	⌵
Street light	⊙
Water meter	⊙
Water valve	⌵

\*Note:  
All existing features  
will be in a shaded line



SHEET INDEX	
1 OF 14	COVER
2 OF 14	NOTES
3 OF 14	PLAN & PROFILE: STA 0+00 - 2+75
4 OF 14	PLAN & PROFILE: STA 2+75 - 5+50
5 OF 14	PLAN & PROFILE: STA 5+50 - 8+25
6 OF 14	PLAN & PROFILE: STA 8+25 - 11+00
7 OF 14	PLAN & PROFILE: STA 11+00 - 13+75
8 OF 14	PLAN & PROFILE: STA 13+75 - 16+25
9 OF 14	DETAILS
10 OF 14	DETAILS
11 OF 14	DETAILS
12 OF 14	DETAILS
13 OF 14	DETAILS
14 OF 14	DETAILS

STORM WATER POLLUTION PREVENTION PLAN	
SWPPP 1	SWPPP NOTES & DETAILS
SWPPP 2	SWPPP DETAILS
SWPPP 3	SWPPP SITE PLAN
SWPPP 4	SWPPP SITE PLAN
SWPPP 5	SWPPP SITE PLAN



NO.	DATE	BY	REVISIONS
1	5/21/26	RTF	change catch basins to combination boxes
2	5/26/26	RTF	Sewer lateral size change.

DATE: MAY 2026  
DRAWN: JEO/KSM  
CHECKED: RTF

PROJECT / LOCATION:  
1200 WEST WATERLINE FROM  
5450 SOUTH TO 5650 SOUTH (CUL-DE-SAC)  
RIVERDALE, UTAH  
TITLE: COVER

CLIENT: RIVERDALE CITY  
PROJECT NUMBER: RC.25005  
FILE: ~RC.25005 01-02 Cover.dwg  
SHEET: 1 of 14

LOCATION: Z:\CEC Clients\Riverdale City\Projects\RC.25005 1200 West Waterline\~CADD C3D 2025\Planset\~Addendum 2\~CADD C3D 2025 Addendum 2 DATE: 5/27/2026 9:31 AM

**EROSION CONTROL NOTES**

1. During construction, the contractor shall be responsible for preventing and controlling soil erosion due to wind and water runoff. The contractor shall be sole responsible for constructing and maintaining the erosion control facilities. All surrounding streets shall be kept clean of debris from traffic from the project site.
2. The contractor shall comply with the requirements of the "best management practices" for storm water protection. This requirement may include protecting all inlet boxes, catch basins, drainage ditches, etc. during construction. The contractor shall protect all surrounding properties and streets from site runoff as required. Approved storm water protection methods and drainage provisions must be used to protect adjoining properties during construction.
3. The contractor shall use vehicle tracking control best management practices at all locations where vehicles will enter or exit the site. Control facilities must be maintained while construction work is in progress, adjusted when necessary, and removed from the site when the project is completed.
4. The contractor shall install storm water inlet protection devices immediately upon all individual storm water inlets becoming functional.
5. All wash water from construction vehicles (concrete trucks, vehicle cleaning, etc.) shall be disposed in a manner that prevents contact with natural storm water discharges from the site.
6. All construction materials spilled, dropped, washed or tracked from vehicles onto City roadways or into storm drainage facilities must be removed immediately.
7. No rubbish, trash, garbage or other such materials shall be discharged into drainage ditches or storm water runoff channels.
8. The contractor shall adhere to all conditions of the "Utah State Storm Water Pollution and Prevention Plan" adopted for this project. The contractor shall be responsible for adjusting the erosion control measures (silt fences, straw bales, etc.) due to grade changes or other unforeseen conditions during development of the project.

**GENERAL CONSTRUCTION NOTES**

1. The utilities shown on the drawings are for informational purposes only. The contractor shall locate all underground utilities, contact blue stakes and other applicable utilities prior to laying pipe within 200 feet of said utilities which may be exposed, damaged or crossed as shown on the drawings or as "blue staked". The contractor shall coordinate with the utility company to move the utility if necessary. The contractor shall not modify grade of project lines in order to go over and around existing utilities. The contractor shall pothole for the location of utilities prior to excavation.
2. The contractor shall review and verify all dimensions shown on the drawings. The contractor must bring to the attention of the Engineer of any errors, discrepancy or conflicts found on any drawings of items that are located on the site.
3. The contractor shall be responsible to provide appropriate signing and barricading. All flagging, signage and barricades and all traffic control required shall be in compliance with the current "manual on uniform traffic control devices".
4. All public and private roadways must be cleaned daily, or as often as required, of all loose dirt, mud, gravel and all debris as a result of the construction work. This requirement shall apply continuously throughout the duration of the project and shall not be limited to normal construction working hours.
5. All dust on project site shall be controlled by sweeping and watering the construction area.
6. The contractor shall be completely responsible for the job site conditions during the course of construction, including safety of all persons and adjoining property. This requirement shall apply continuously throughout the duration of the project and not be limited to normal construction working hours.
7. Verify depth and location of all existing utilities prior to constructing any new utility lines. Notify project engineer of any discrepancies or conflicts prior to any connections being made.
8. The contractor shall be responsible for meeting all of the requirements established for safe trenching. (See OSHA and UOSHA requirements, latest editions).
9. Specific information provided in the contract documents shall supersede items covered in these drawings.
10. The contractor shall contact and coordinate all utility connections with the utility owner.
11. All construction to comply with specifications contained and with Riverdale City standards and specifications.

**CALL BEFORE YOU DIG.**  
**IT'S FREE & IT'S THE LAW.**   
 (TOLL FREE) **1-800-662-4111**  
**BLUE STAKES OF UTAH**  
 UTILITY NOTIFICATION CENTER, INC.  
[www.bluestakes.org](http://www.bluestakes.org)



**CAUTION NOTICE TO CONTRACTOR**

The contractor is herewith instructed that the location and/or elevation of existing utilities as shown on these plans are based on records of the various utility companies and, where possible, measurements taken in the field. The information shown is not to be relied on as being exact or complete. The contractor is required to call the appropriate utility company at least 48 hours before any excavation to request exact field location of utilities. Is the sole responsibility of the contractor to relocate all existing utilities which conflict with the proposed improvements shown on the drawings.

The contractor shall assume sole and complete responsibility for job site conditions during the course of construction of this project, including safety of all persons and property. This requirement shall apply continuously and not be limited to the normal working hours; and the contractor shall defend, indemnify, and hold the owner and the engineer harmless from any and all liability, real or alleged, in connection with the performance of work on this project, excepting for liability arising from sole negligence of the owner or the engineer.

**ABBREVIATIONS USED IN DRAWINGS**

adj	adjust	elec	electrical	in	inch	pl	property line	std	standard
arv	air release valve	eg	existing grade/ground	inv	invert	pp	power pole	sw	storm water
bw	back of walk	elev	elevation	irr	irrigation	pr	proposed	swmh	storm water manhole
bvce	beginning vertical curve elev.	eoc	edge of concrete	l	length	prc	point of reverse curve	sy	square yard
bvcs	beginning vertical curve station	ep	edge of pavement	ld	land drain	prv	pressure reducing valve	tc	top of concrete
bw	both ways	evce	end vertical curve elev.	lf	linear foot	pt	point of tangency	tbc	top back of curb
cb	catch basin	evcs	end vertical curve station	lip	lip of curb	pue	public utility easement	tele	telephone
chord	chord bearing	ew	each way	lp	low point	pvc	polyvinyl chloride pipe	toa	top of asphalt
cl	centerline	exist	existing	ls	lump sum	r	radius	toe	toe of slope
cmp	corrugated metal pipe	ff	finished floor elevation	lt	left	rc	rebar & cap	top	top of slope
co	clean out	fg	finished grade	max	maximum	row	right of way	tow	top of wall
conc	concrete	fh	fire hydrant	mh	manhole	rt	right	tow	top of walk
cw	culinary water	fl	flow line	min	minimum	sec cor	section corner	typ	typical
da	delta angle	fo	fiber optic	mon	monument	ser	south end radius	w	water
det	detail	ft	foot	nts	not to scale	sco	sewer cleanout	wm	water meter
dia	diameter	gb	grade break	oc	on center	sf	square foot	wmh	water manhole
dip	ductile iron pipe	hdpe	high density poly ethylene	ohp	over head power	ss	sanitary sewer	wv	water valve
dwg	drawing	hp	high point	pc	point of curvature	smh	sanitary sewer manhole		
ea	each	hyd	hydrant	pi	point of intersection	sta	station		



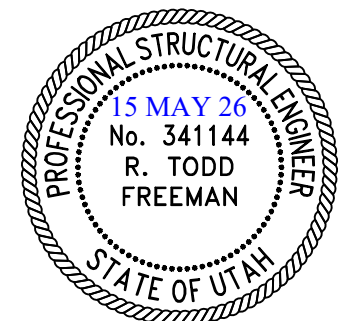
CIVIL ENGINEERING  
 CONSULTANTS, PLLC.  
 5141 SOUTH 1500 WEST  
 RIVERDALE, UT 84405  
 801.866.0550

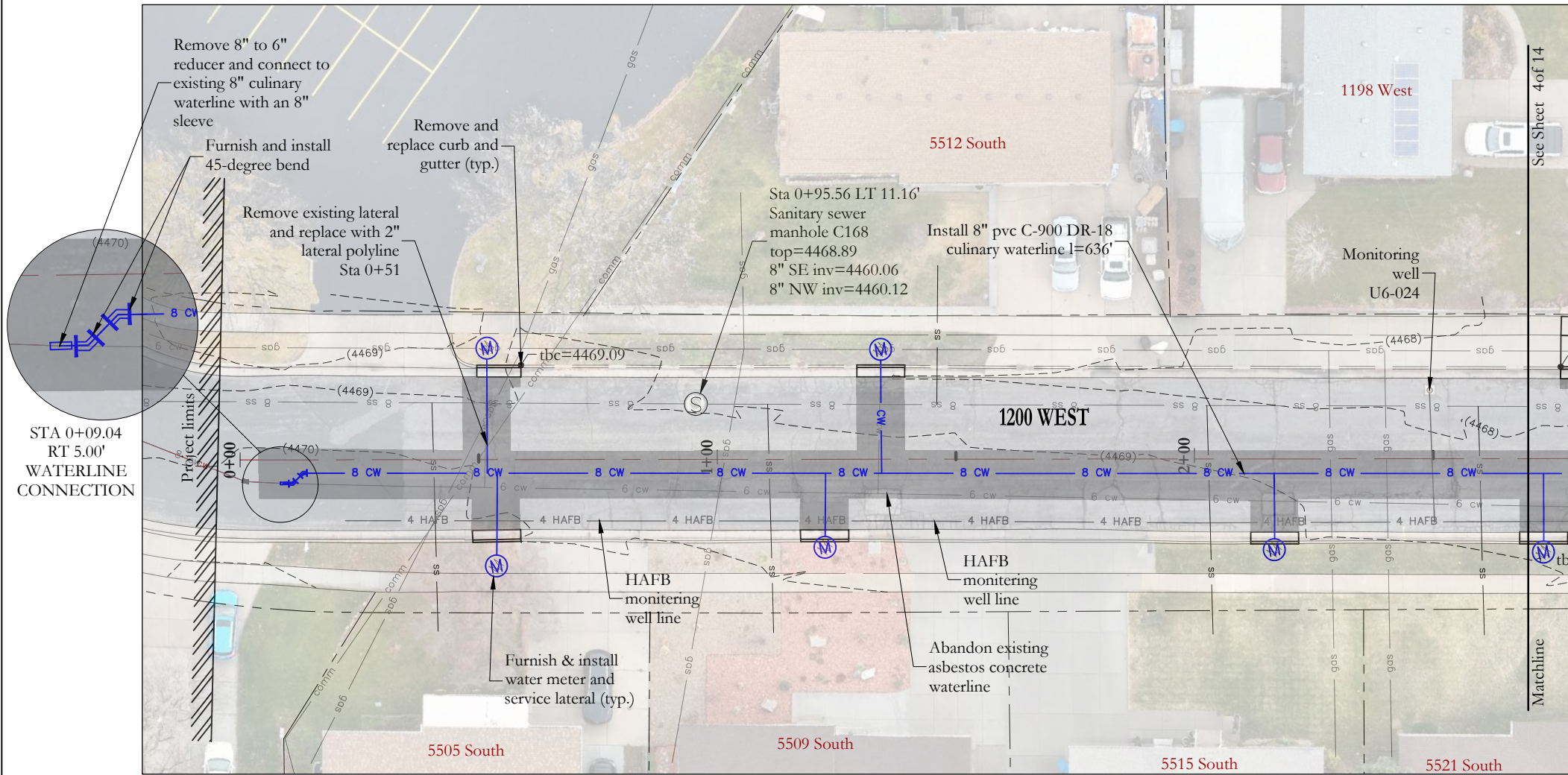
NO.	DATE	BY	REVISIONS

DATE: MAY 2026  
 DRAWN: JEO/KSM  
 CHECKED: RTF

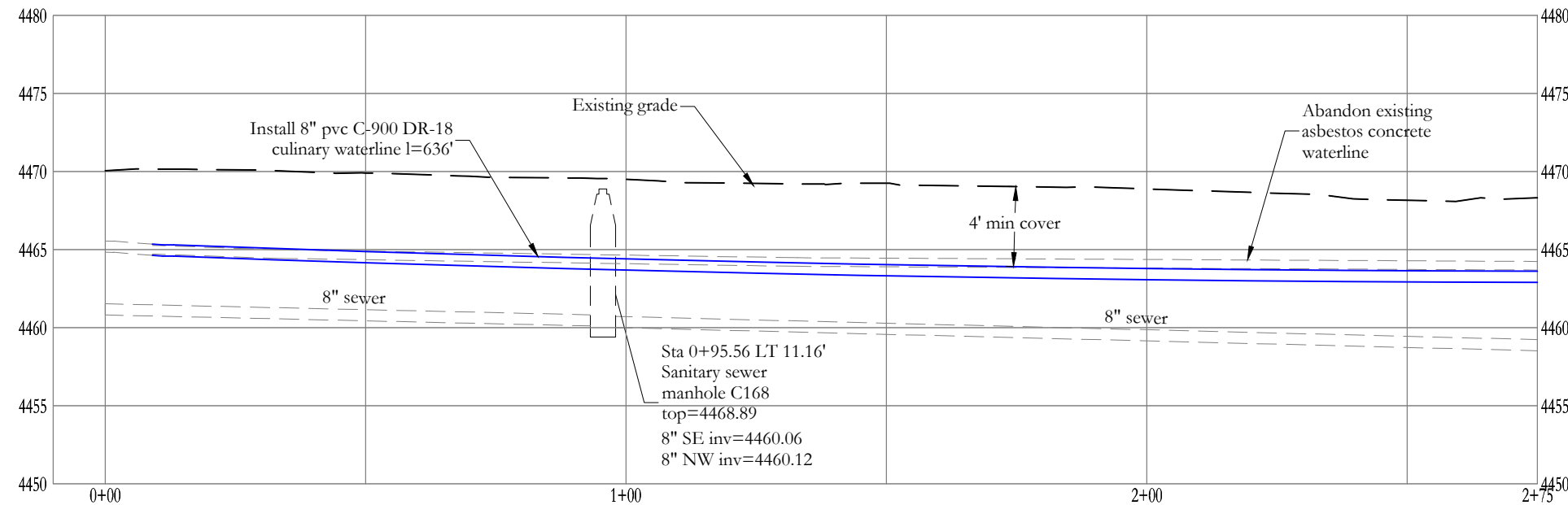
PROJECT / LOCATION:  
 1200 WEST WATERLINE FROM  
 5450 SOUTH TO 5650 SOUTH (CUL-DE-SAC)  
 RIVERDALE, UTAH  
 TITLE: NOTES

CLIENT: RIVERDALE CITY  
 PROJECT NUMBER: RC.25005  
 FILE: ~RC.25005 01-02 Cover.dwg  
 SHEET: 2 of 14

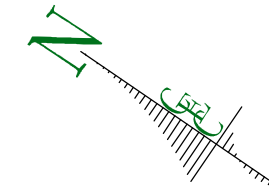




STA 0+09.04  
RT 5.00'  
WATERLINE  
CONNECTION

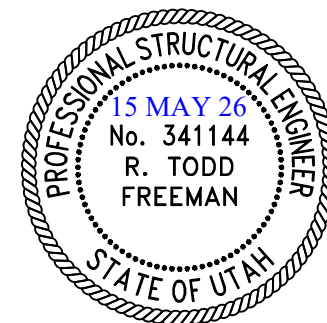


No HAFB mag marker stations on this sheet



NOTES:

- Contractor shall locate/pothole existing waterline to determine the best location for new 8" waterline.
- Maintain a minimum of 10' separation between waterline and sewer line (edge to edge).
- Reconnect all water service laterals to connect to new 8" waterline.
- All mechanical joint restraint (e.g. megalug) connections, flange fitting and all other fittings using connection bolts must be furnished and installed with bluebolts.
- All MJ connections to be restrained with restrained joints and thrust blocks. Wrap all fittings with plastic prior to pouring thrust blocks.
- Utilities shown are for information purposes only. The contractor shall pothole to verify utilities location as necessary.
- Waterline to be buried with 4' of cover (minimum).
- Protect all existing utilities (e.g. storm water, sanitary sewer, etc.).
- The contractor shall use equipment such that it will not damage the existing curb & gutter. Any curb & gutter damaged will be replaced at the Contractor's expense.
- Water service laterals to be 3/4", 1" & 2" CTS blue poly pipe (DR-9). Tracing wire (size and type per city specifications) shall be installed with the blue poly pipe.
- For all water valves being abandoned in place, remove the concrete collar, the top 1/2 of the sleeve and fill the remaining sleeve with concrete.
- HAFB Mag utility 4" pipe 3' depth from top of road, contractor to verify.
- Remove and replace HAFB Mag markers in pavement as needed.
- All numbered HAFB monitoring wells listed are active as of email from Julie McNeil at Air Force Civil Engineer Center date May 9th 2025.
- Existing pipe being abandoned shall be capped at all open ends in the ground.
- Contractor shall verify all sewer laterals being crossed with the trench as to not damage them.
- Contractor to be careful installing the stormwater pipe when crossing the 4" HAFB, the existing waterline and the sewer line.



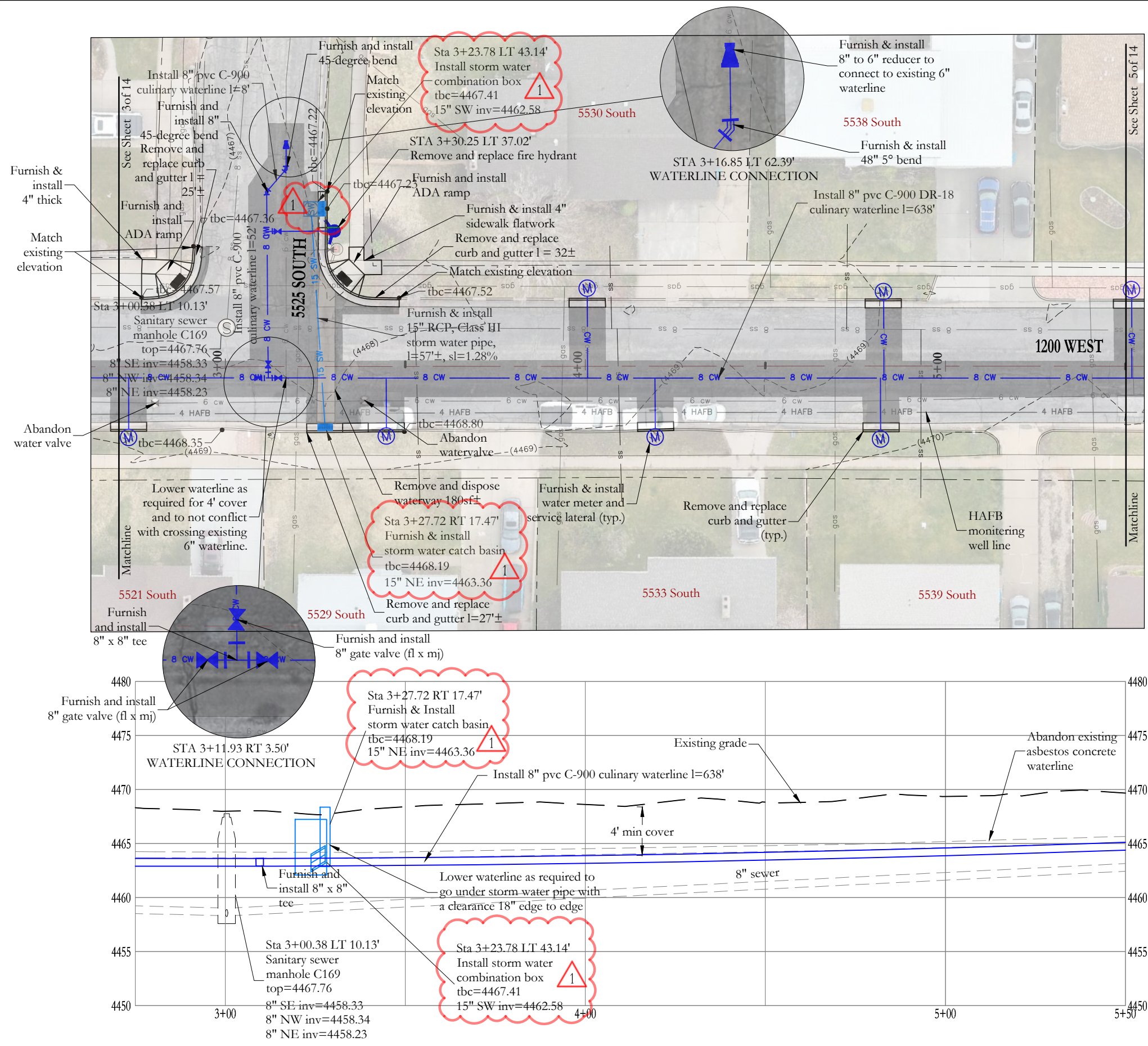
**CTS**  
CIVIL ENGINEERING  
CONSULTANTS, PLLC.  
5141 SOUTH 1500 WEST  
RIVERDALE, UT 84405  
801.866.0550

NO.	DATE	BY	REVISIONS

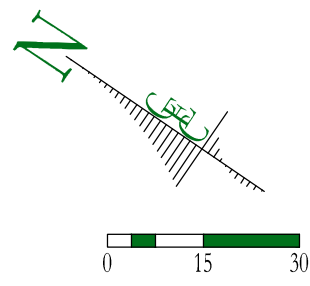
DATE: MAY 2026  
DRAWN: JEO/KSM  
CHECKED: RTF

PROJECT / LOCATION:  
1200 WEST WATERLINE FROM  
5450 SOUTH TO 5650 SOUTH (CUL-DE-SAC)  
RIVERDALE, UTAH  
TITLE:  
PLAN & PROFILE: STA 0+00 - 2+75

CLIENT: RIVERDALE CITY  
PROJECT NUMBER: RC.25005  
FILE: ~RC.25005 03 Site.dwg  
SHEET: 3 of 14

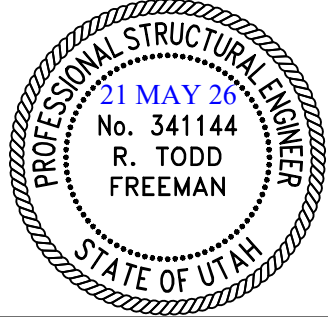


No HAFB mag marker stations on this sheet



NOTES:

- Contractor shall locate/pothole existing waterline to determine the best location for new 8" waterline.
- Maintain a minimum of 10' separation between waterline and sewer line (edge to edge).
- Reconnect all water service laterals to connect to new 8" waterline.
- All mechanical joint restraint (e.g. megalug) connections, flange fitting and all other fittings using connection bolts must be furnished and installed with bluebolts.
- All MJ connections to be restrained with restrained joints and thrust blocks. Wrap all fittings with plastic prior to pouring thrust blocks.
- Utilities shown are for information purposes only. The contractor shall pothole to verify utilities location as necessary.
- Waterline to be buried with 4' of cover (minimum).
- Protect all existing utilities (e.g. storm water, sanitary sewer, etc.).
- The contractor shall use equipment such that it will not damage the existing curb & gutter. Any curb & gutter damaged will be replaced at the Contractor's expense.
- Water service laterals to be 3/4", 1" & 2" CTS blue poly pipe (DR-9). Tracing wire (size and type per city specifications) shall be installed with the blue poly pipe.
- For all water valves being abandoned in place, remove the concrete collar, the top 1/2 of the sleeve and fill the remaining sleeve with concrete.
- HAFB Mag utility 4" pipe 3' depth from top of road, contractor to verify.
- Remove and replace HAFB Mag markers in pavement as needed.
- All numbered HAFB monitoring wells listed are active as of email from Julie McNeil at Air Force Civil Engineer Center date May 9th 2025.
- Existing pipe being abandoned shall be capped at all open ends in the ground.
- Contractor shall verify all sewer laterals being crossed with the trench as to not damage them.
- Contractor to be careful installing the stormwater pipe when crossing the 4" HAFB, the existing waterline and the sewer line.



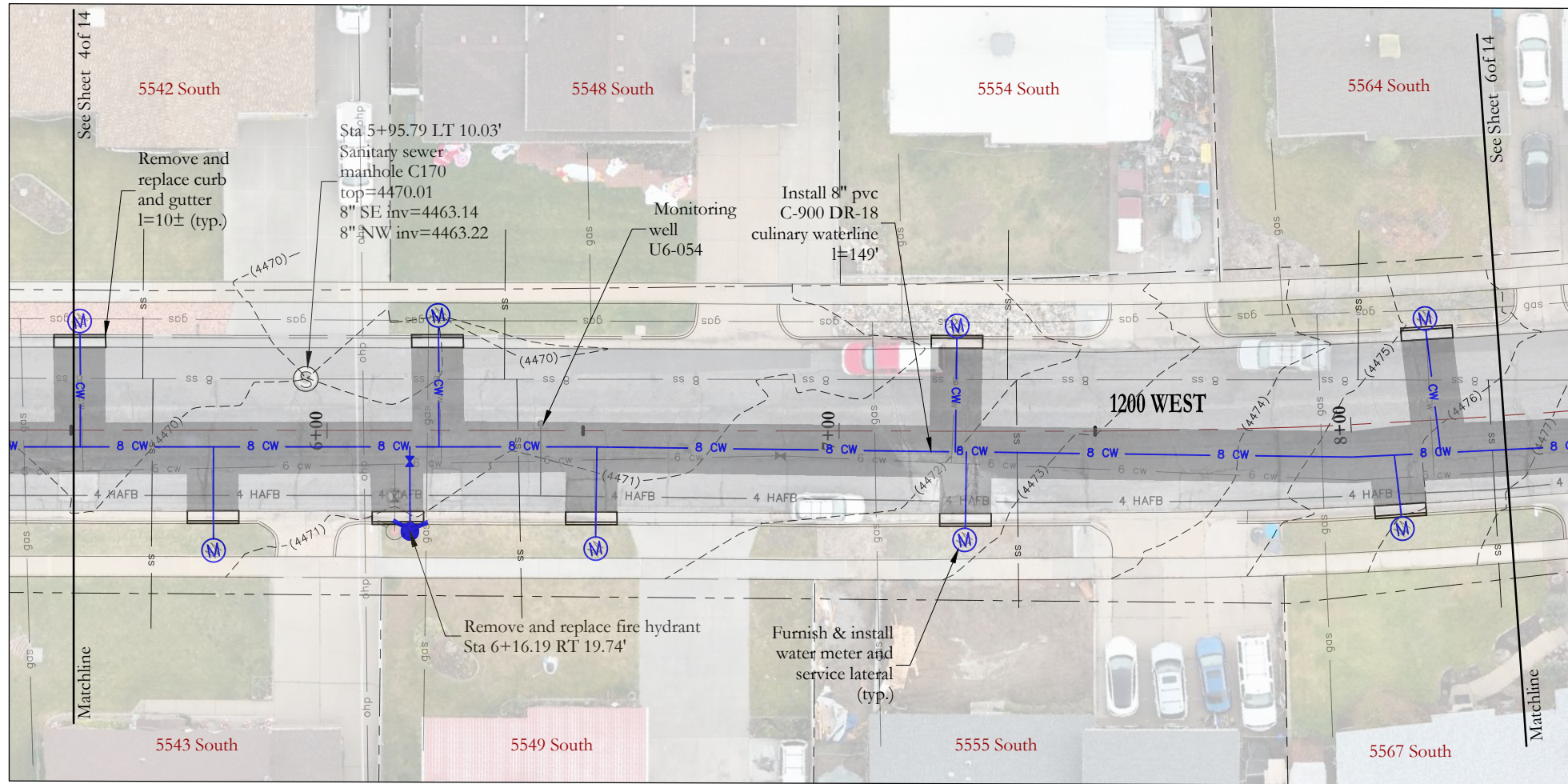
**CEC**  
 CIVIL ENGINEERING  
 CONSULTANTS, PLLC.  
 5141 SOUTH 1500 WEST  
 RIVERDALE, UT 84405  
 801.866.0550

NO.	DATE	BY	REVISIONS
1	5/21/26	RTF	change catch basins to combination boxes

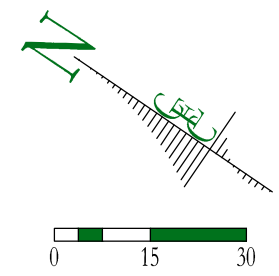
DATE: MAY 2026  
 DRAWN: JEO/KSM  
 CHECKED: RTF

PROJECT / LOCATION:  
 1200 WEST WATERLINE FROM  
 5450 SOUTH TO 5650 SOUTH (CUL-DE-SAC)  
 RIVERDALE, UTAH  
 TITLE:  
 PLAN & PROFILE: STA 2+75 - 5+50

CLIENT:  
 RIVERDALE CITY  
 PROJECT NUMBER:  
 RC.25005  
 FILE:  
 ~RC.25005 03 Site.dwg  
 SHEET:  
 4 of 14

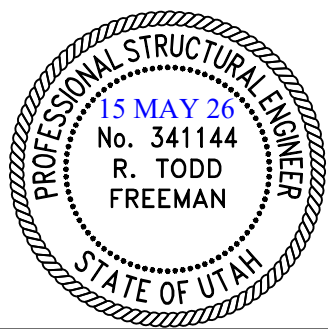
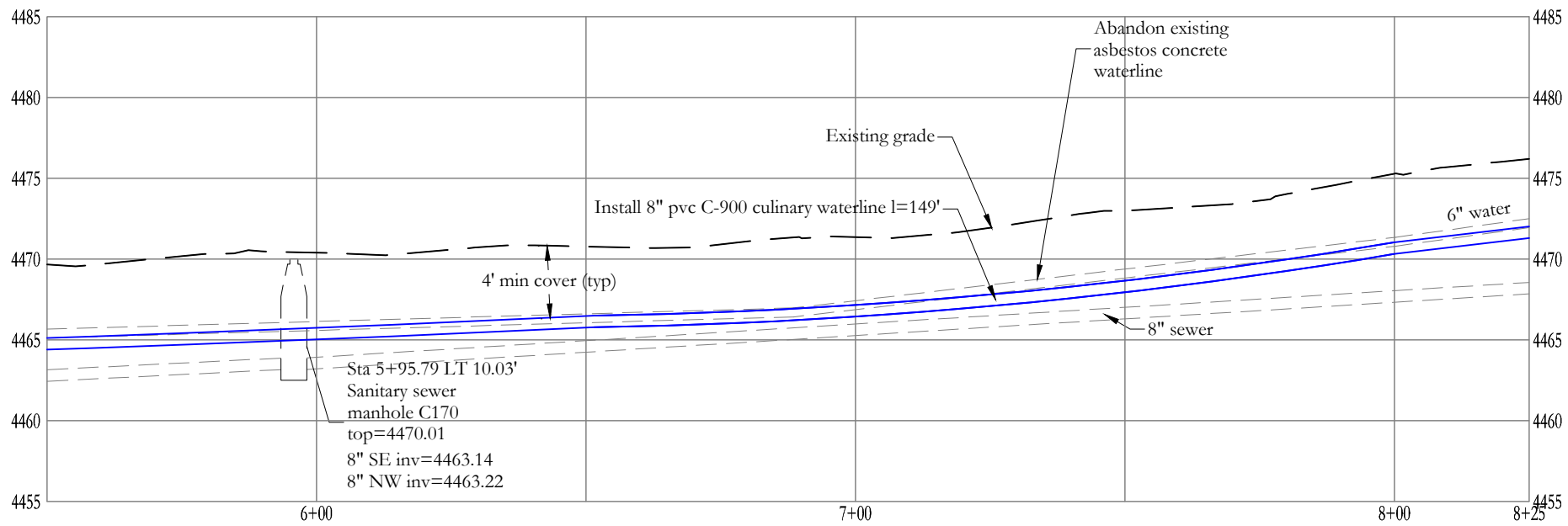


No HAFB mag marker stations on this sheet



**NOTES:**

- Contractor shall locate/pothole existing waterline to determine the best location for new 8" waterline.
- Maintain a minimum of 10' separation between waterline and sewer line (edge to edge).
- Reconnect all water service laterals to connect to new 8" waterline.
- All mechanical joint restraint (e.g. megalug) connections, flange fitting and all other fittings using connection bolts must be furnished and installed with bluebolts.
- All MJ connections to be restrained with restrained joints and thrust blocks. Wrap all fittings with plastic prior to pouring thrust blocks.
- Utilities shown are for information purposes only. The contractor shall pothole to verify utilities location as necessary.
- Waterline to be buried with 4' of cover (minimum).
- Protect all existing utilities (e.g. storm water, sanitary sewer, etc.).
- The contractor shall use equipment such that it will not damage the existing curb & gutter. Any curb & gutter damaged will be replaced at the Contractor's expense.
- Water service laterals to be 3/4", 1" & 2" CTS blue poly pipe (DR-9). Tracing wire (size and type per city specifications) shall be installed with the blue poly pipe.
- For all water valves being abandoned in place, remove the concrete collar, the top 1/2 of the sleeve and fill the remaining sleeve with concrete.
- HAFB Mag utility 4" pipe 3' depth from top of road, contractor to verify.
- Remove and replace HAFB Mag markers in pavement as needed.
- All numbered HAFB monitoring wells listed are active as of email from Julie McNeil at Air Force Civil Engineer Center date May 9th 2025.
- Existing pipe being abandoned shall be capped at all open ends in the ground.
- Contractor shall verify all sewer laterals being crossed with the trench as to not damage them.
- Contractor to be careful installing the stormwater pipe when crossing the 4" HAFB, the existing waterline and the sewer line.



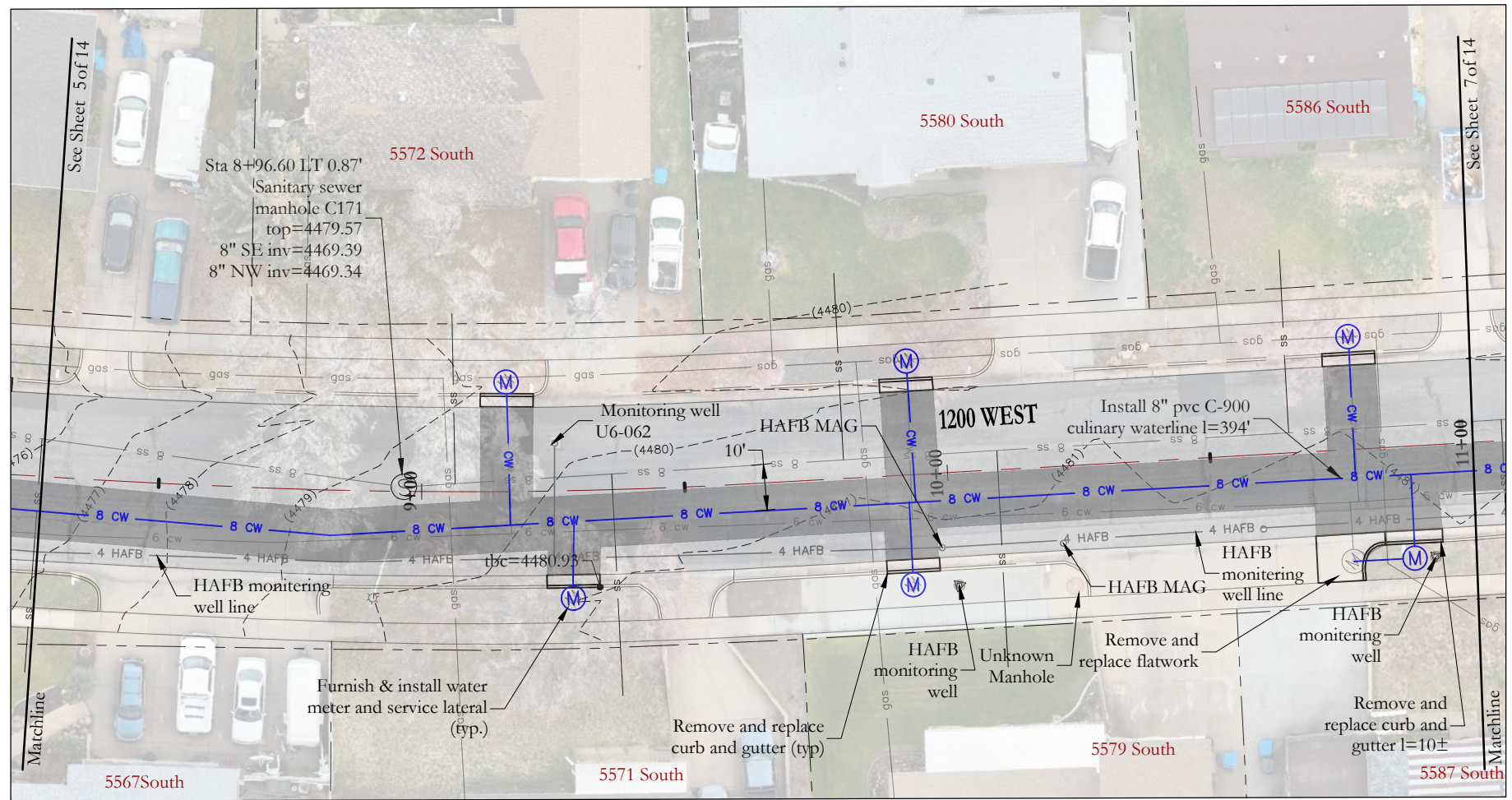
**CEC**  
 CIVIL ENGINEERING  
 CONSULTANTS, PLLC.  
 5141 SOUTH 1500 WEST  
 RIVERDALE, UT 84405  
 801.866.0550

NO.	DATE	BY	REVISIONS

DATE: MAY 2026  
 DRAWN: JEO/KSM  
 CHECKED: RTF

PROJECT / LOCATION:  
 1200 WEST WATERLINE FROM  
 5450 SOUTH TO 5650 SOUTH (CUL-DE-SAC)  
 RIVERDALE, UTAH  
 TITLE:  
 PLAN & PROFILE: STA 5+50 - 8+25

CLIENT: RIVERDALE CITY  
 PROJECT NUMBER: RC.25005  
 FILE: ~RC.25005 03 Site.dwg  
 SHEET: 5 of 14

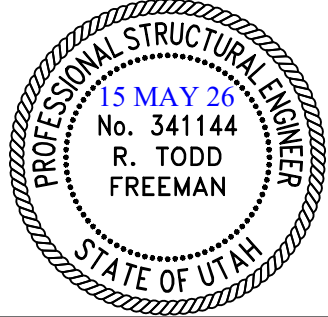
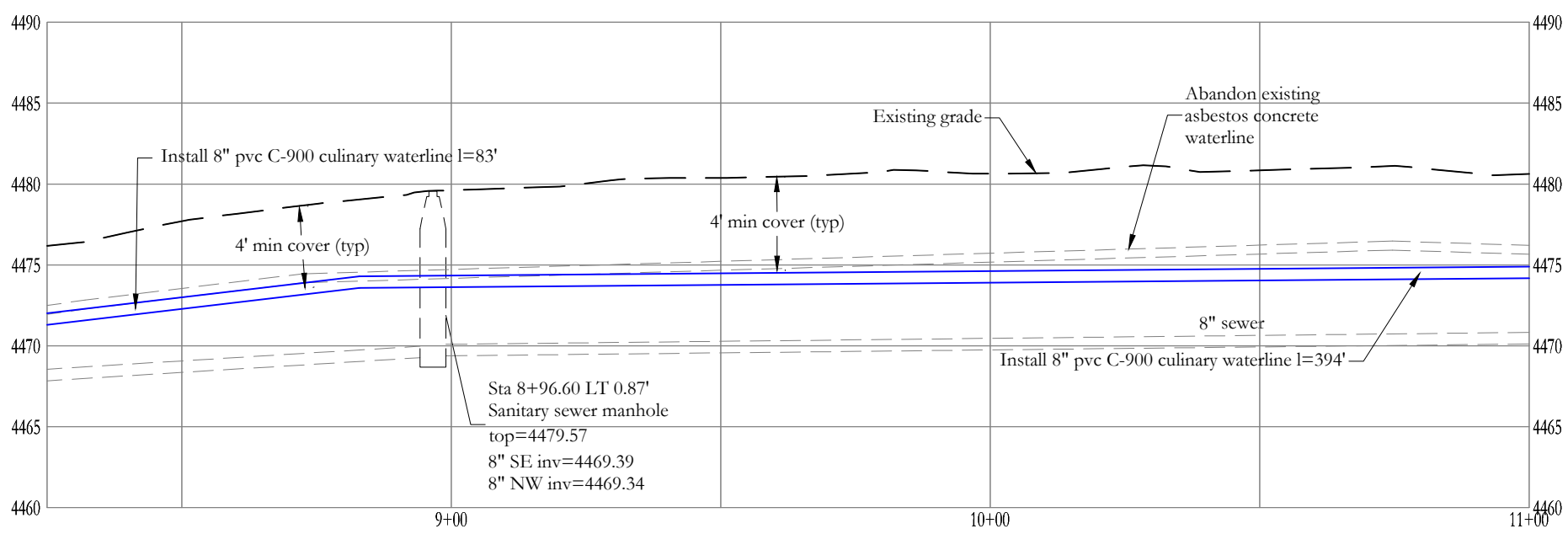
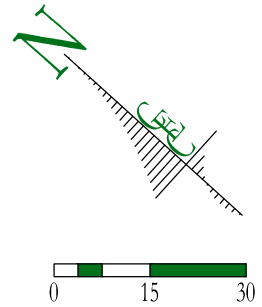


HAFB mag marker stations

- Sta 9+98.19 RT 14.12'
- Sta 10+21.21 RT 14.20'
- Sta 11+36.18 RT 13.83'
- Sta 12+14.65 RT 12.75'
- Sta 12+20.48 RT 9.59'
- Sta 12+26.09 RT 13.90'
- Sta 13+01.00 RT 14.17'
- Sta 13+75.33 RT 13.67'
- Sta 14+48.85 RT 11.67'
- Sta 15+65.42 RT 0.17'
- Sta 15+69.62 LT 4.00'
- Sta 15+70.77 LT 2.02'

NOTES:

1. Contractor shall locate/pothole existing waterline to determine the best location for new 8" waterline.
2. Maintain a minimum of 10' separation between waterline and sewer line (edge to edge).
3. Reconnect all water service laterals to connect to new 8" waterline.
4. All mechanical joint restraint (e.g. megalug) connections, flange fitting and all other fittings using connection bolts must be furnished and installed with bluebolts.
5. All MJ connections to be restrained with restrained joints and thrust blocks. Wrap all fittings with plastic prior to pouring thrust blocks.
6. Utilities shown are for information purposes only. The contractor shall pothole to verify utilities location as necessary.
7. Waterline to be buried with 4' of cover (minimum).
8. Protect all existing utilities (e.g. storm water, sanitary sewer, etc.).
9. The contractor shall use equipment such that it will not damage the existing curb & gutter. Any curb & gutter damaged will be replaced at the Contractor's expense.
10. Water service laterals to be 3/4", 1" & 2" CTS blue poly pipe (DR-9). Tracing wire (size and type per city specifications) shall be installed with the blue poly pipe.
11. For all water valves being abandoned in place, remove the concrete collar, the top 1/2 of the sleeve and fill the remaining sleeve with concrete.
12. HAFB Mag utility 4" pipe 3' depth from top of road, contractor to verify.
13. Remove and replace HAFB Mag markers in pavement as needed.
14. All numbered HAFB monitoring wells listed are active as of email from Julie McNeil at Air Force Civil Engineer Center date May 9th 2025.
15. Existing pipe being abandoned shall be capped at all open ends in the ground.
16. Contractor shall verify all sewer laterals being crossed with the trench as to not damage them.
17. Contractor to be careful installing the stormwater pipe when crossing the 4" HAFB, the existing waterline and the sewer line.



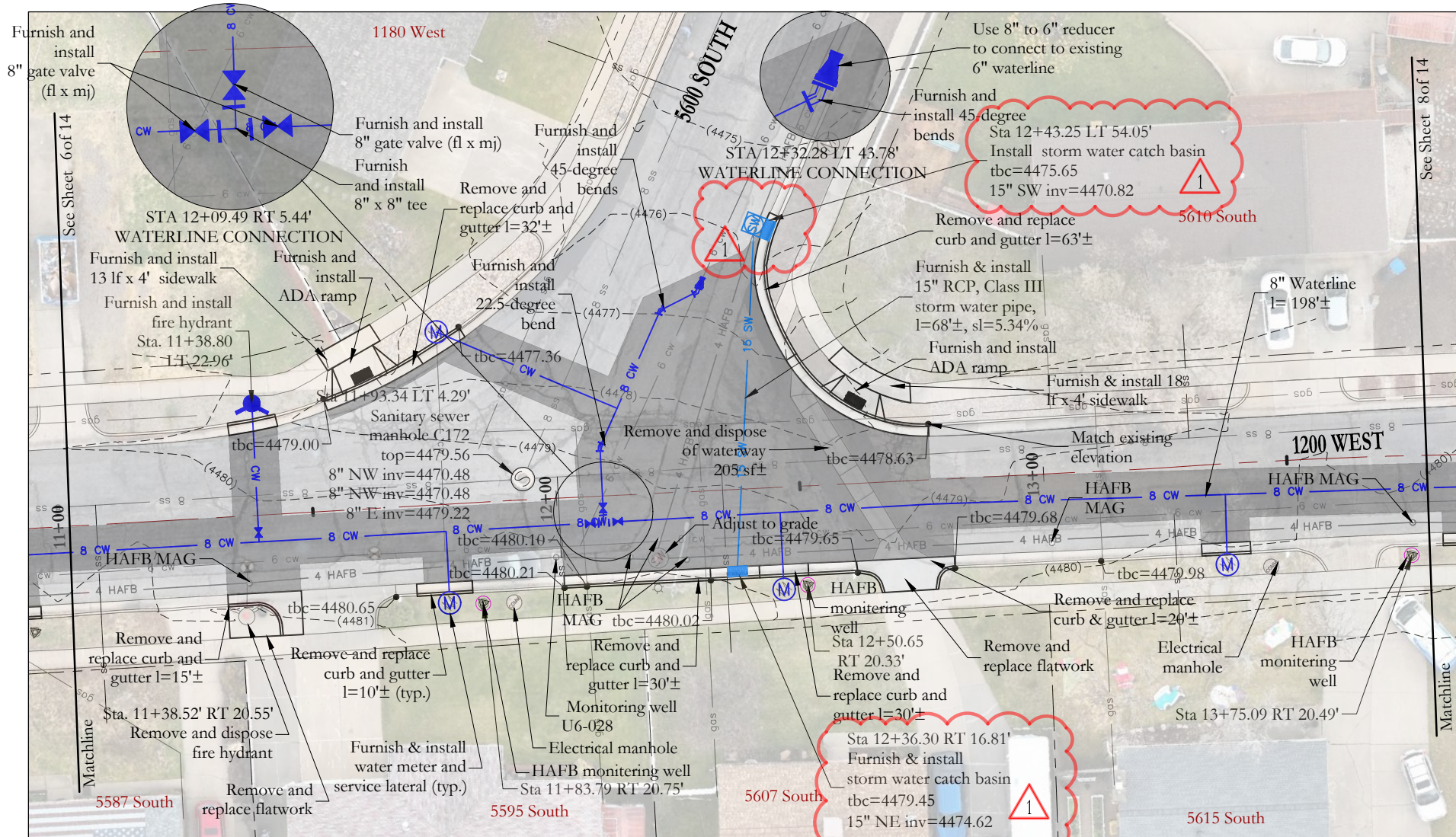
**CEC**  
 CIVIL ENGINEERING  
 CONSULTANTS, PLLC.  
 5141 SOUTH 1500 WEST  
 RIVERDALE, UT 84405  
 801.866.0550

NO.	DATE	BY	REVISIONS

DATE: MAY 2026  
 DRAWN: JEO/KSM  
 CHECKED: RTF

PROJECT / LOCATION:  
 1200 WEST WATERLINE FROM  
 5450 SOUTH TO 5650 SOUTH (CUL-DE-SAC)  
 RIVERDALE, UTAH  
 TITLE:  
 PLAN & PROFILE: STA 8+25 - 11+00

CLIENT: RIVERDALE CITY  
 PROJECT NUMBER: RC.25005  
 FILE: ~RC.25005 03 Site.dwg  
 SHEET: 6 of 14

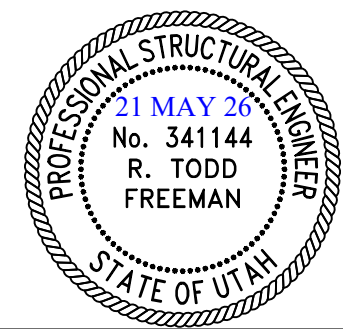
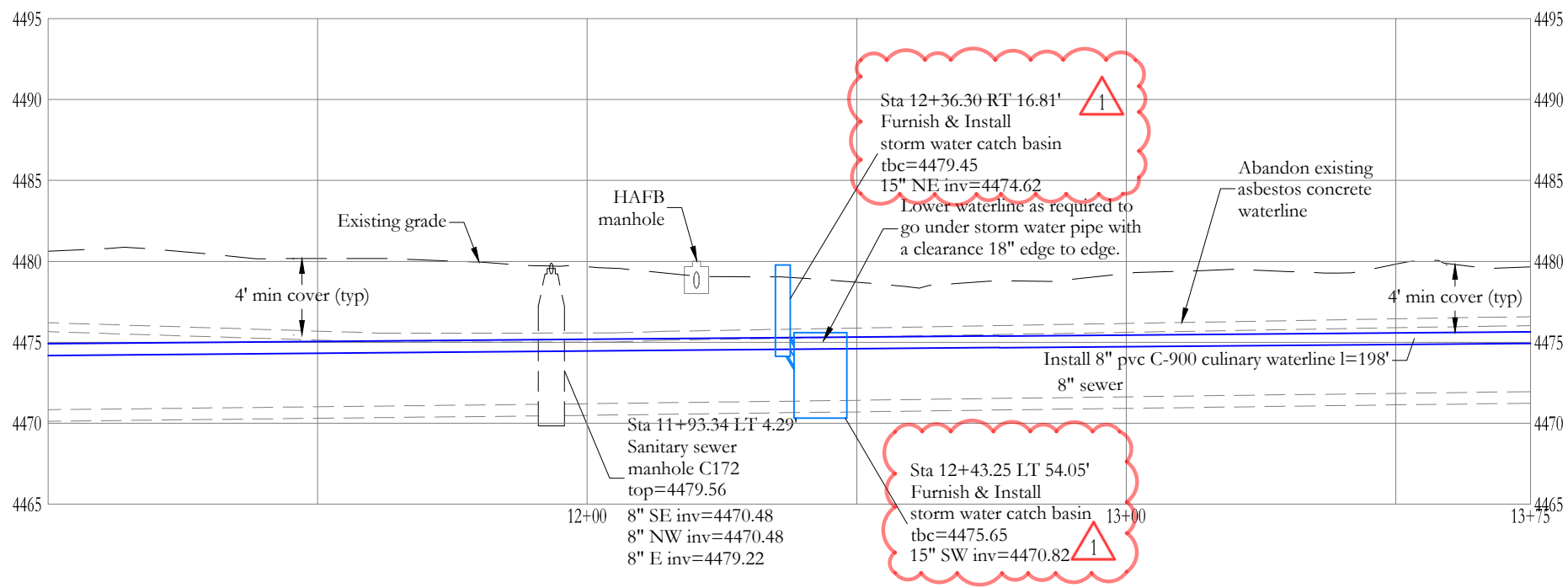
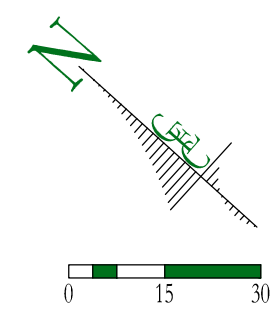


HAFB mag marker stations

- Sta 9+98.19 RT 14.12'
- Sta 10+21.21 RT 14.20'
- Sta 11+36.18 RT 13.83'
- Sta 12+14.65 RT 12.75'
- Sta 12+20.48 RT 9.59'
- Sta 12+26.09 RT 13.90'
- Sta 13+01.00 RT 14.17'
- Sta 13+75.33 RT 13.67'
- Sta 14+48.85 RT 11.67'
- Sta 15+65.42 RT 0.17'
- Sta 15+69.62 LT 4.00'
- Sta 15+70.77 LT 2.02'

NOTES:

1. Contractor shall locate/pothole existing waterline to determine the best location for new 8" waterline.
2. Maintain a minimum of 10' separation between waterline and sewer line (edge to edge).
3. Reconnect all water service laterals to connect to new 8" waterline.
4. All mechanical joint restraint (e.g. megalug) connections, flange fitting and all other fittings using connection bolts must be furnished and installed with bluebolts.
5. All MJ connections to be restrained with restrained joints and thrust blocks. Wrap all fittings with plastic prior to pouring thrust blocks.
6. Utilities shown are for information purposes only. The contractor shall pothole to verify utilities location as necessary.
7. Waterline to be buried with 4' of cover (minimum).
8. Protect all existing utilities (e.g. storm water, sanitary sewer, etc.).
9. The contractor shall use equipment such that it will not damage the existing curb & gutter. Any curb & gutter damaged will be replaced at the Contractor's expense.
10. Water service laterals to be 3/4", 1" & 2" CTS blue poly pipe (DR-9). Tracing wire (size and type per city specifications) shall be installed with the blue poly pipe.
11. For all water valves being abandoned in place, remove the concrete collar, the top 1/2 of the sleeve and fill the remaining sleeve with concrete.
12. HAFB Mag utility 4" pipe 3' depth from top of road, contractor to verify.
13. Remove and replace HAFB Mag markers in pavement as needed.
14. All numbered HAFB monitoring wells listed are active as of email from Julie McNeil at Air Force Civil Engineer Center date May 9th 2025.
15. Existing pipe being abandoned shall be capped at all open ends in the ground.
16. Contractor shall verify all sewer laterals being crossed with the trench as to not damage them.
17. Contractor to be careful installing the stormwater pipe when crossing the 4" HAFB, the existing waterline and the sewer line.



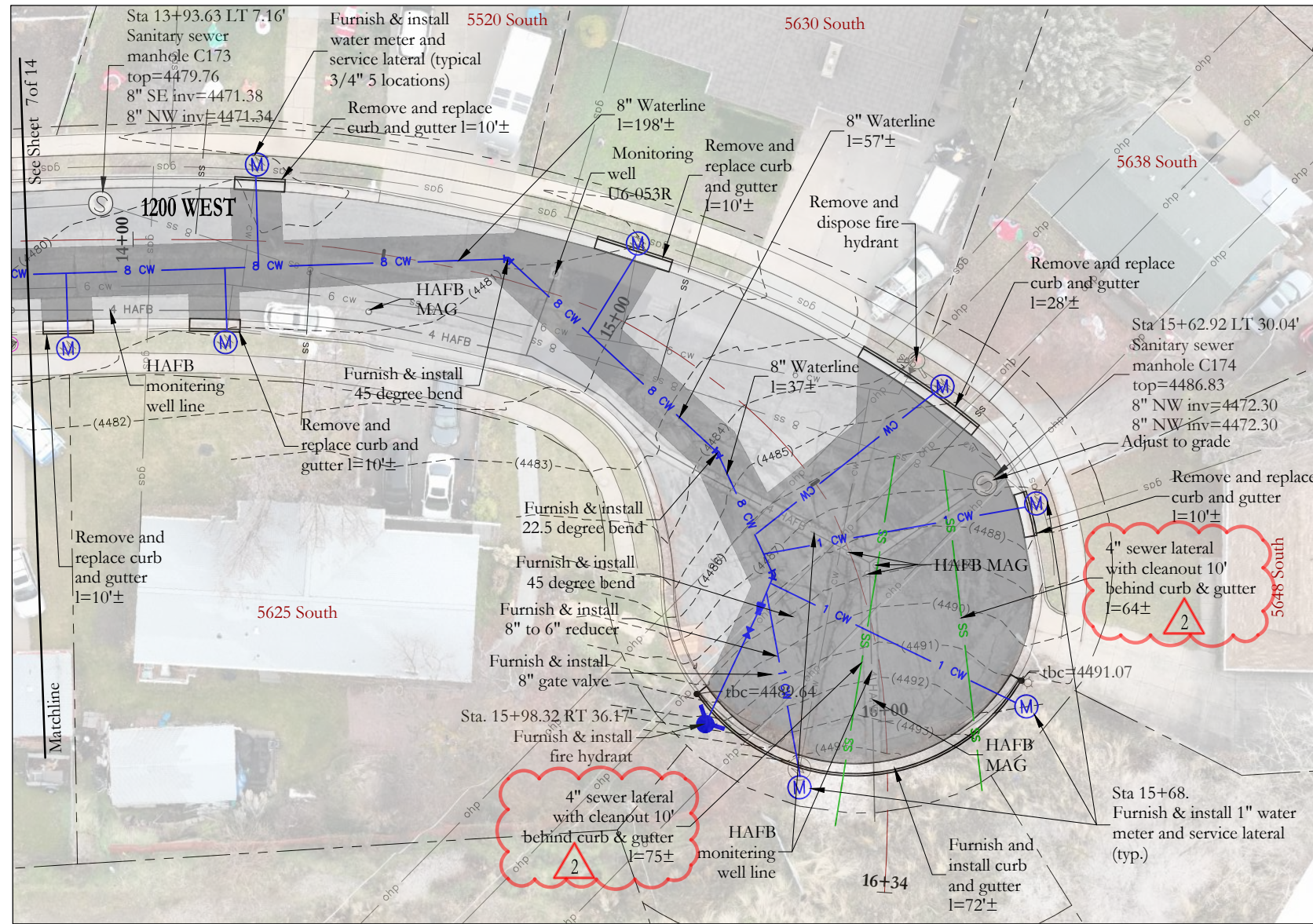
**CEC**  
 CIVIL ENGINEERING  
 CONSULTANTS, PLLC.  
 5141 SOUTH 1500 WEST  
 RIVERDALE, UT 84405  
 801.866.0550

NO.	DATE	BY	REVISIONS
1	5/21/26	RTF	change catch basins to combination boxes

DATE: MAY 2026  
 DRAWN: JEO/KSM  
 CHECKED: RTF

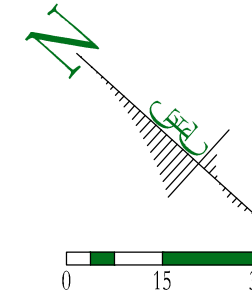
PROJECT / LOCATION:  
 1200 WEST WATERLINE FROM  
 5450 SOUTH TO 5650 SOUTH (CUL-DE-SAC)  
 RIVERDALE, UTAH  
 TITLE:  
 PLAN & PROFILE: STA 11+00 - 13+75

CLIENT:  
 RIVERDALE CITY  
 PROJECT NUMBER:  
 RC.25005  
 FILE:  
 ~RC.25005 03 Site.dwg  
 SHEET:  
 7 of 14



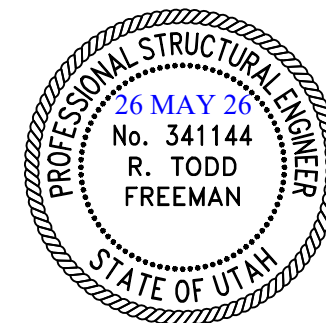
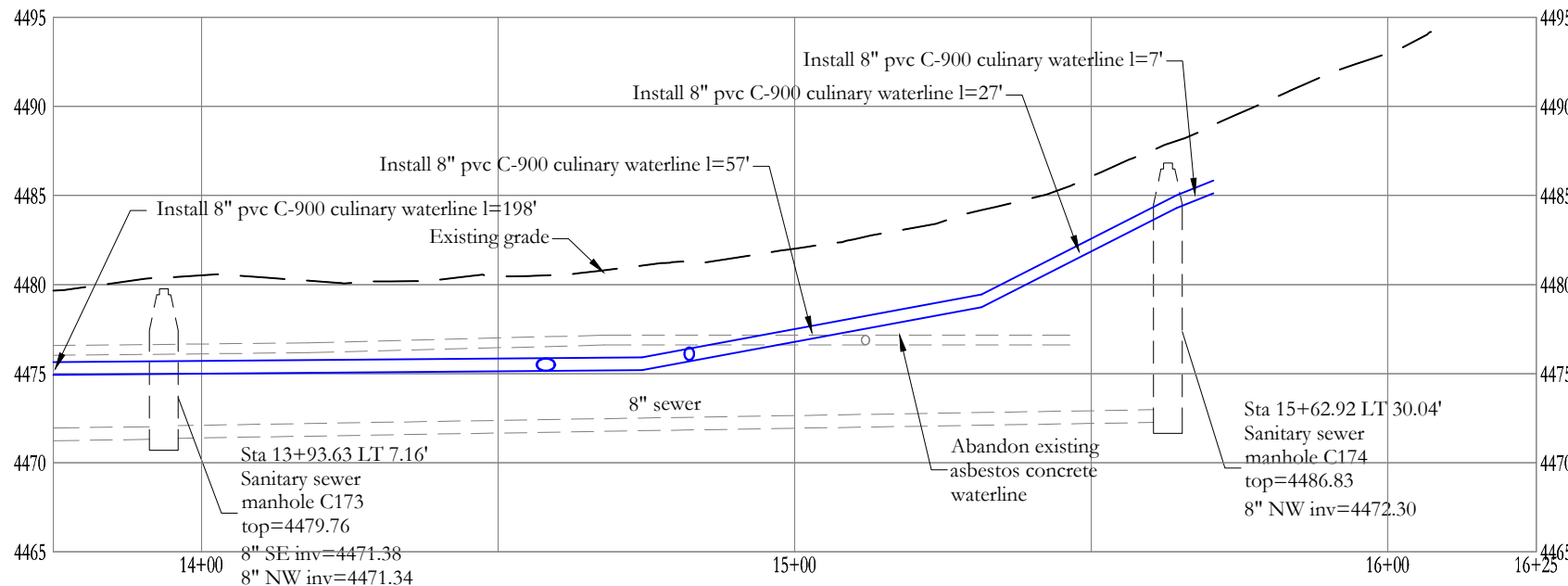
HAFB mag marker stations

- Sta 9+98.19 RT 14.12'
- Sta 10+21.21 RT 14.20'
- Sta 11+36.18 RT 13.83'
- Sta 12+14.65 RT 12.75'
- Sta 12+20.48 RT 9.59'
- Sta 12+26.09 RT 13.90'
- Sta 13+01.00 RT 14.17'
- Sta 13+75.33 RT 13.67'
- Sta 14+48.85 RT 11.67'
- Sta 15+65.42 RT 0.17'
- Sta 15+69.62 LT 4.00'
- Sta 15+70.77 LT 2.02'



NOTES:

1. Contractor shall locate/pothole existing waterline to determine the best location for new 8" waterline.
2. Maintain a minimum of 10' separation between waterline and sewer line (edge to edge).
3. Reconnect all water service laterals to connect to new 8" waterline.
4. All mechanical joint restraint (e.g. megalug) connections, flange fitting and all other fittings using connection bolts must be furnished and installed with bluebolts.
5. All MJ connections to be restrained with restrained joints and thrust blocks. Wrap all fittings with plastic prior to pouring thrust blocks.
6. Utilities shown are for information purposes only. The contractor shall pothole to verify utilities location as necessary.
7. Waterline to be buried with 4' of cover (minimum).
8. Protect all existing utilities (e.g. storm water, sanitary sewer, etc.).
9. The contractor shall use equipment such that it will not damage the existing curb & gutter. Any curb & gutter damaged will be replaced at the Contractor's expense.
10. Water service laterals to be 3/4", 1" & 2" CTS blue poly pipe (DR-9). Tracing wire (size and type per city specifications) shall be installed with the blue poly pipe.
11. For all water valves being abandoned in place, remove the concrete collar, the top 1/2 of the sleeve and fill the remaining sleeve with concrete.
12. HAFB Mag utility 4" pipe 3' depth from top of road, contractor to verify.
13. Remove and replace HAFB Mag markers in pavement as needed.
14. All numbered HAFB monitoring wells listed are active as of email from Julie McNeil at Air Force Civil Engineer Center date May 9th 2025.
15. Existing pipe being abandoned shall be capped at all open ends in the ground.
16. Contractor shall verify all sewer laterals being crossed with the trench as to not damage them.
17. Contractor to be careful installing the stormwater pipe when crossing the 4" HAFB, the existing waterline and the sewer line.



**CEC**  
 CIVIL ENGINEERING  
 CONSULTANTS, PLLC.  
 5141 SOUTH 1500 WEST  
 RIVERDALE, UT 84405  
 801.866.0550

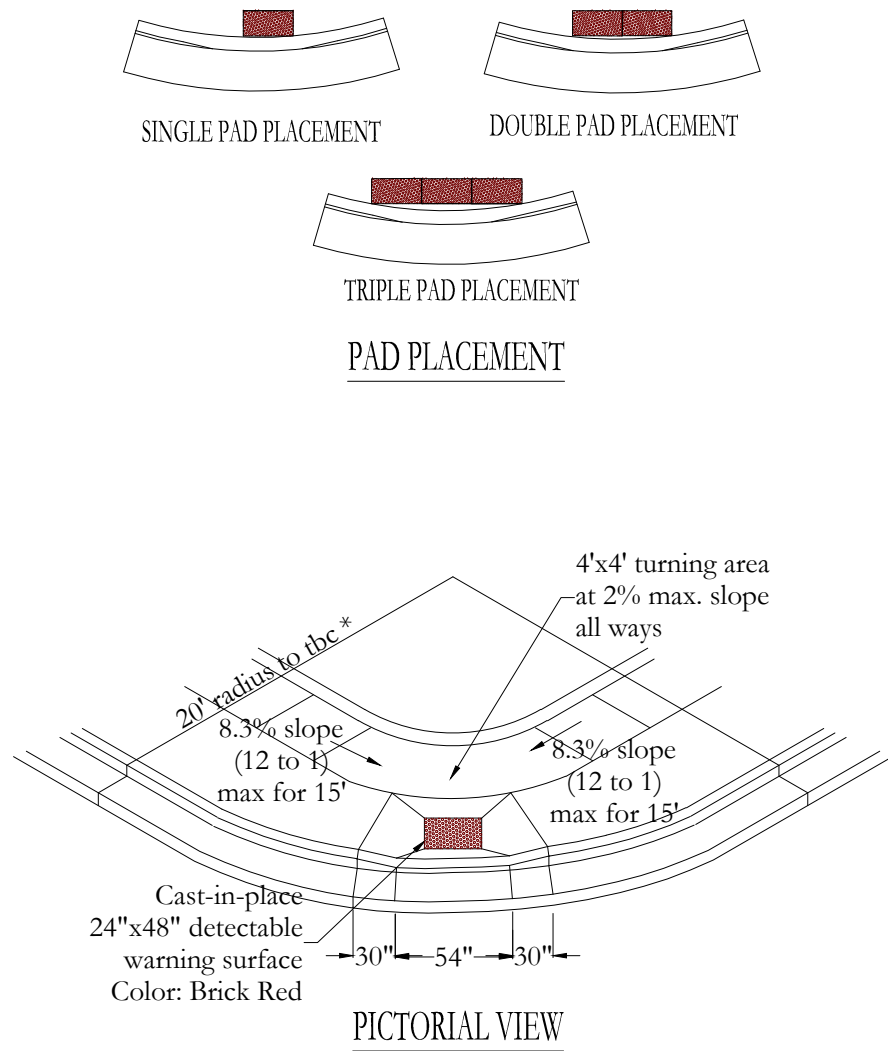
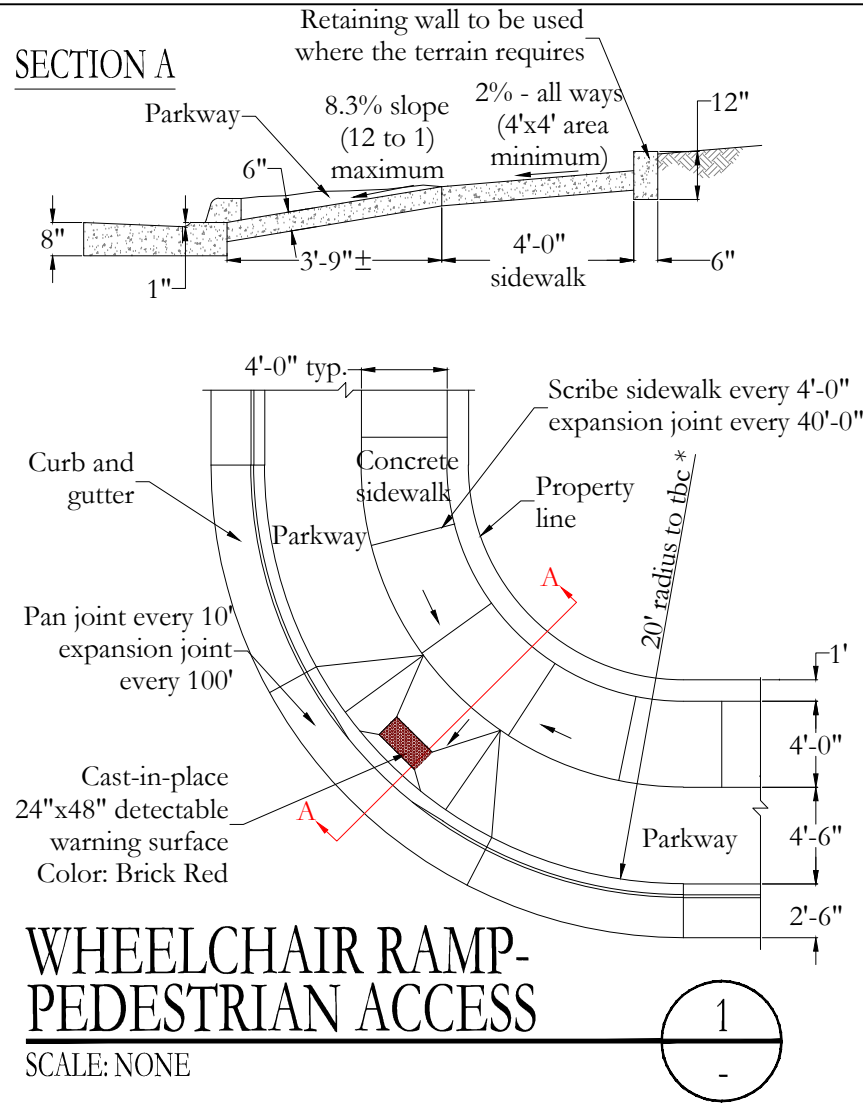
NO.	DATE	BY	REVISIONS
2	5/26/26	RTF	Sewer lateral size change.

DATE: MAY 2026  
 DRAWN: JEO/KSM  
 CHECKED: RTF

PROJECT / LOCATION:  
 1200 WEST WATERLINE FROM  
 5450 SOUTH TO 5650 SOUTH (CUL-DE-SAC)  
 RIVERDALE, UTAH  
 TITLE:  
 PLAN & PROFILE: STA 13+75 - 16+25

CLIENT: RIVERDALE CITY  
 PROJECT NUMBER: RC.25005  
 FILE: ~RC.25005 03 Site.dwg  
 SHEET: 8 of 14

LOCATION: Z:\CEC Clients\Riverdale City\Projects\RC.25005 1200 West Waterline\~CADD C3D 2025\Plans\~Addendum 2\~CADD C3D 2025 Addendum 2 DATE: 5/27/2026 9:32 AM



**NOTES:**

1. A minimum 6" depth of roadbase material or crushed gravel shall be placed to grade and compacted under handicap ramps to 95% of maximum dry density prior to placement of concrete.
2. Locate all inlet grates 2' minimum away from the pedestrian crosswalk, with all drainage intercepted before storm water crosses the crosswalk area.
3. Slopes shown are maximum slopes.
4. Expansion joints shall be constructed by placing an approved material, (typically bituminous impregnated fiberboard), the full depth of the concrete. Expansion material shall be set 1/4" below the finish level of sidewalk ramp. Expansion material shall be installed prior to the placement of concrete. **Concrete shall not be installed below the expansion joint.**
5. When a city roadway intersects with a UDOT road, a 35' minimum radius (or other) will be required as per UDOT requirement.
6. Detectable warning surface materials & installation must conform to "ADA cast-in-place tactile warning panels" requirements & specifications.
7. Detectable warning panels by "ADA Solutions, Inc.", color to be specified by City (other products to be approved by City prior to installation).
8. This detail is for new construction of wheelchair ramps. When modifying any existing ramps, contact Riverdale City Public Works Inspector for engineering and modification.

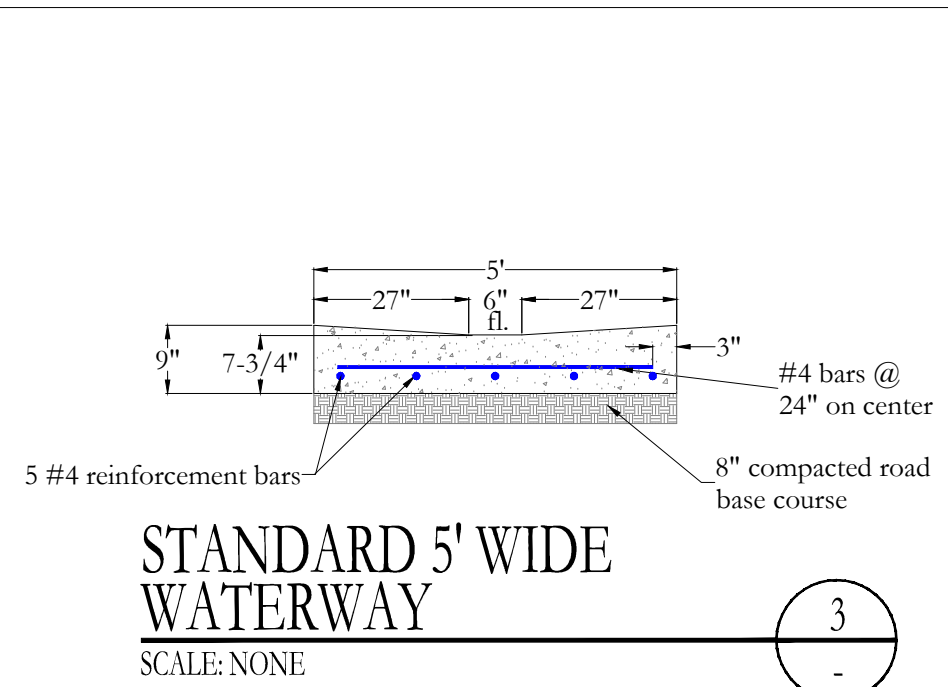
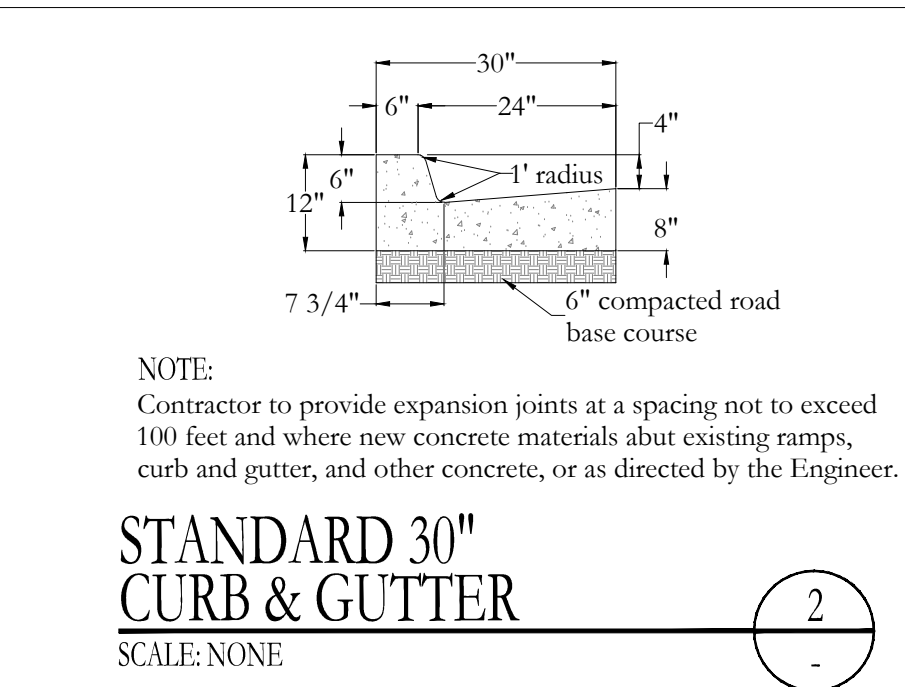
CIVIL ENGINEERING CONSULTANTS, PLLC.  
 5141 SOUTH 1500 WEST  
 RIVERDALE, UT 84405  
 801.866.0550

NO.	DATE	BY	REVISIONS

DATE: MAY 2026  
 DRAWN: JEO/KSM  
 CHECKED: RTF

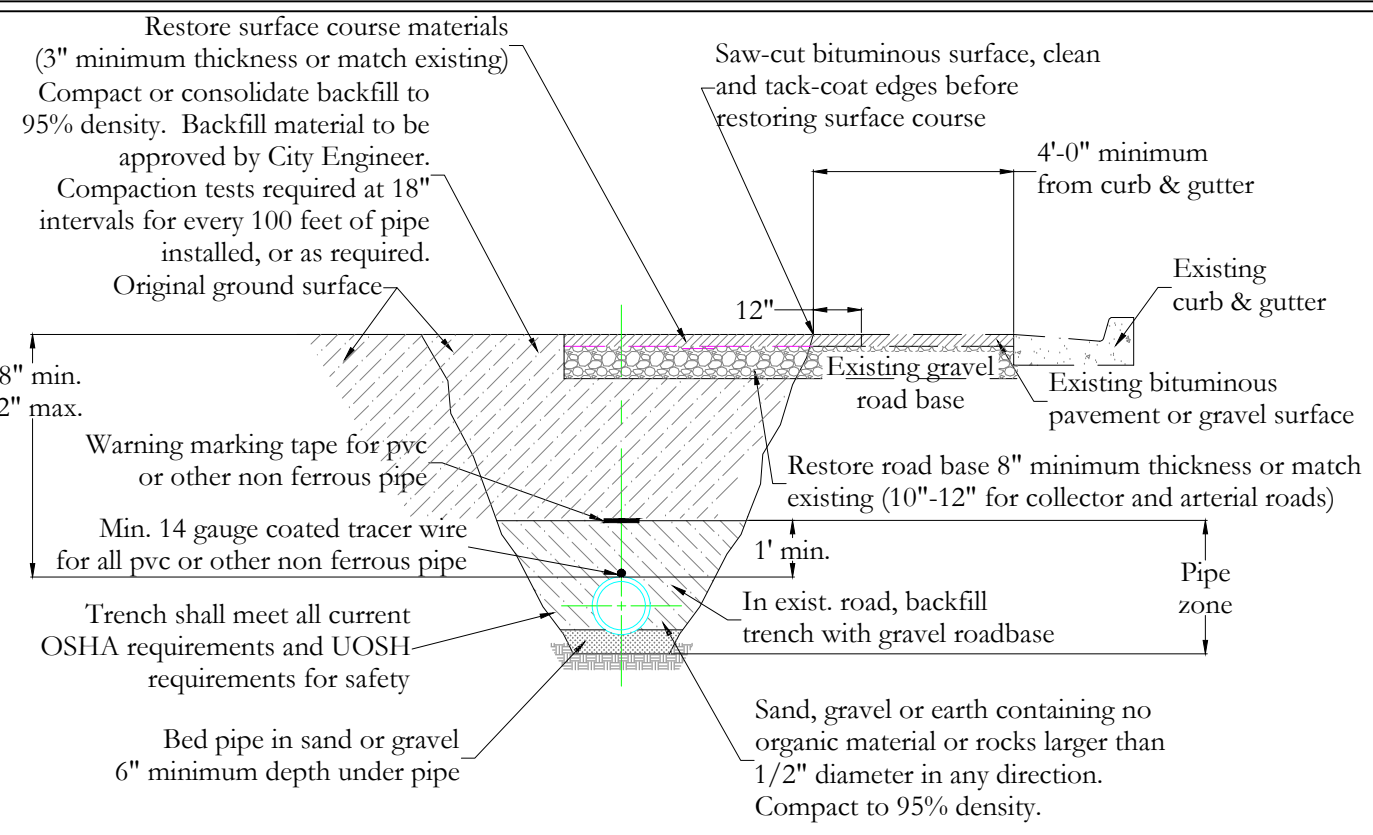
PROJECT / LOCATION:  
 1200 WEST WATERLINE FROM  
 5450 SOUTH TO 5650 SOUTH (CUL-DE-SAC)  
 RIVERDALE, UTAH  
 TITLE:  
 DETAILS

CLIENT:  
 RIVERDALE CITY  
 PROJECT NUMBER:  
 RC.25005  
 FILE:  
 ~RC.25005 07 Details.dwg  
 SHEET:  
 9 of 14



PROFESSIONAL STRUCTURAL ENGINEER  
 15 MAY 26  
 No. 341144  
 R. TODD FREEMAN  
 STATE OF UTAH

LOCATION: Z:\CEC Clients\Rivdale City\Projects\RC.25005 1200 West Waterline\~CADD C3D 2025\Addendum 2\~CADD C3D 2025 Addendum 2  
 DATE: 5/27/2026 9:32 AM



**CULINARY WATER TRENCH CROSS-SECTION**  
 SCALE: NONE

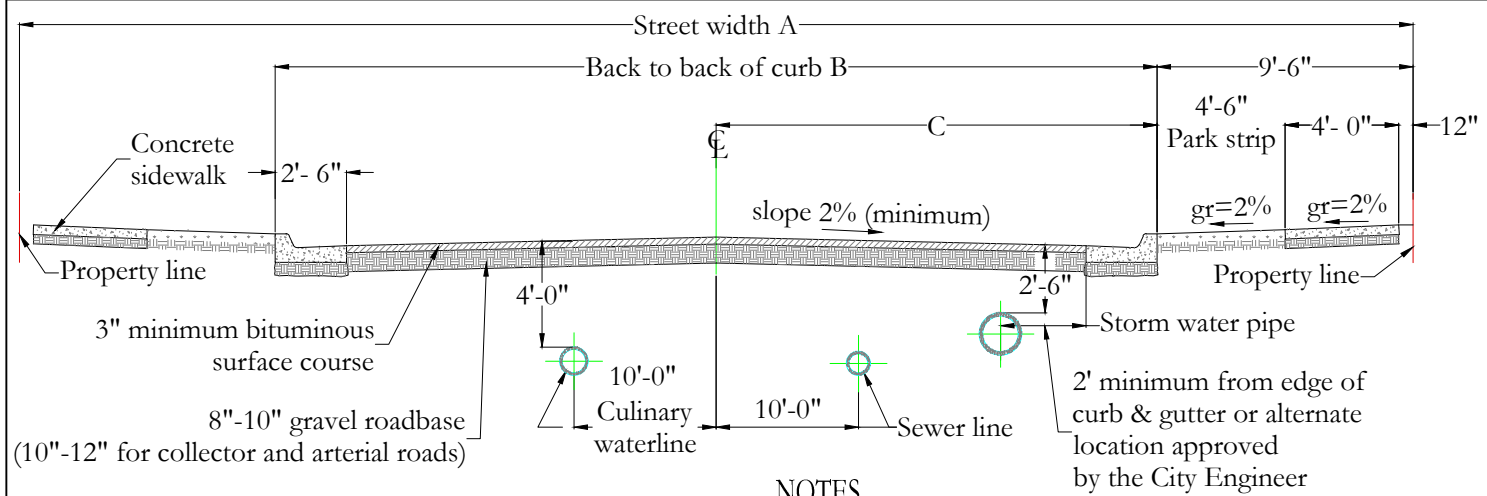
**WATERLINE PIPING AND MISCELLANEOUS NOTES:**

- Water lines 12 inches and larger shall be ductile iron class-51. Water lines 10 inches and smaller shall be pvc C-900 DR-18 or ductile iron Class-51. All waterlines shall be a minimum of 8-inches in diameter.
- Valves larger than 12-inches shall be butterfly valves. Concrete collars required around all valve boxes.
- Ductile iron pipe and fittings shall be wrapped with polyethylene and have cathodic protection where required.
- Whenever possible "hot tap" connections required. Hot tap valve to be supported during connection. Contractor to notify City 24-hours in advance of making connection.
- Contractor shall contact property owners 48-hours in advance with written notice for shutting off water
- Pipe zone shall be backfilled with sand or material as approved by project engineer.
- The following tests must be passed before the waterline is connected for service. All disinfection and testing shall follow all AWWA specifications and standards (see the Technical Specification discharge of waste water).
  - Pipeline inspection - alignment, grade, class of pipe, & brass wedges installation
  - Pressure Test - Must keep a minimum of 200 PSI for 2-hours
  - Chlorination Test - Must keep a minimum of 30 PPM for 24-hours.
  - Clear Water Test
  - Bacteria Test - 2 tests are required. The 2nd test must be taken 24-hours after the 1st test is performed. (See Technical Specifications for additional detail information)
- Upon completion of a new waterline a sampling tap valve shall be installed on the blow-off pipe at the ends of the pipe to aid with the water sampling and tests that are required in Item 9 above.
- Terminations for tracer wire for pvc piping is to be located at the surface of valve boxes. The wire is to be brought on the outside of the bottom section of the water valve box and brought inside through the top section of the box. Tracer wire shall be extended to the ground surface adjacent fire hydrants
- A fire hydrant (for pipeline flushing) shall be installed at the end of all cul-de-sac's & dead-end streets.
- All mechanical joint restraint (e.g. megalug) connections, flange fittings and all other fittings using connection bolts must be furnished and installed with bluebolts.

**CEC**  
 CIVIL ENGINEERING CONSULTANTS, PLLC.  
 5141 SOUTH 1500 WEST  
 RIVERDALE, UT 84405  
 801.866.0550

NO.	DATE	BY	REVISIONS

DATE: MAY 2026  
 DRAWN: JEO/KSM  
 CHECKED: RTF



**STANDARD URBAN ROADWAY SECTION**  
 SCALE: NONE

2

- NOTES**
- Maximum difference in elevation between curb on opposite side of street shall not exceed 1'-0".
  - Pavement thickness shall be considered as minimum and may be increased by the Engineer when the subgrade c.b.r. is less than 10 or when a greater depth is necessary to provide sufficient stability.
  - All roadbase shall meet UDOT standards and specifications. Recycled concrete will NOT be permitted to use as a roadbase substitute.

Street designation	R.O.W. WIDTH A	T.B.C. TO T.B.C. B	CL TO T.B.C. C
Minor	50'	31'	15.5'
Standard Residential	60'	41'	20.5'
Collector	66'	47'	23.5'
Minor Arterial	80'	61'	31.5'
Major Arterial	100'	81'	40.5'

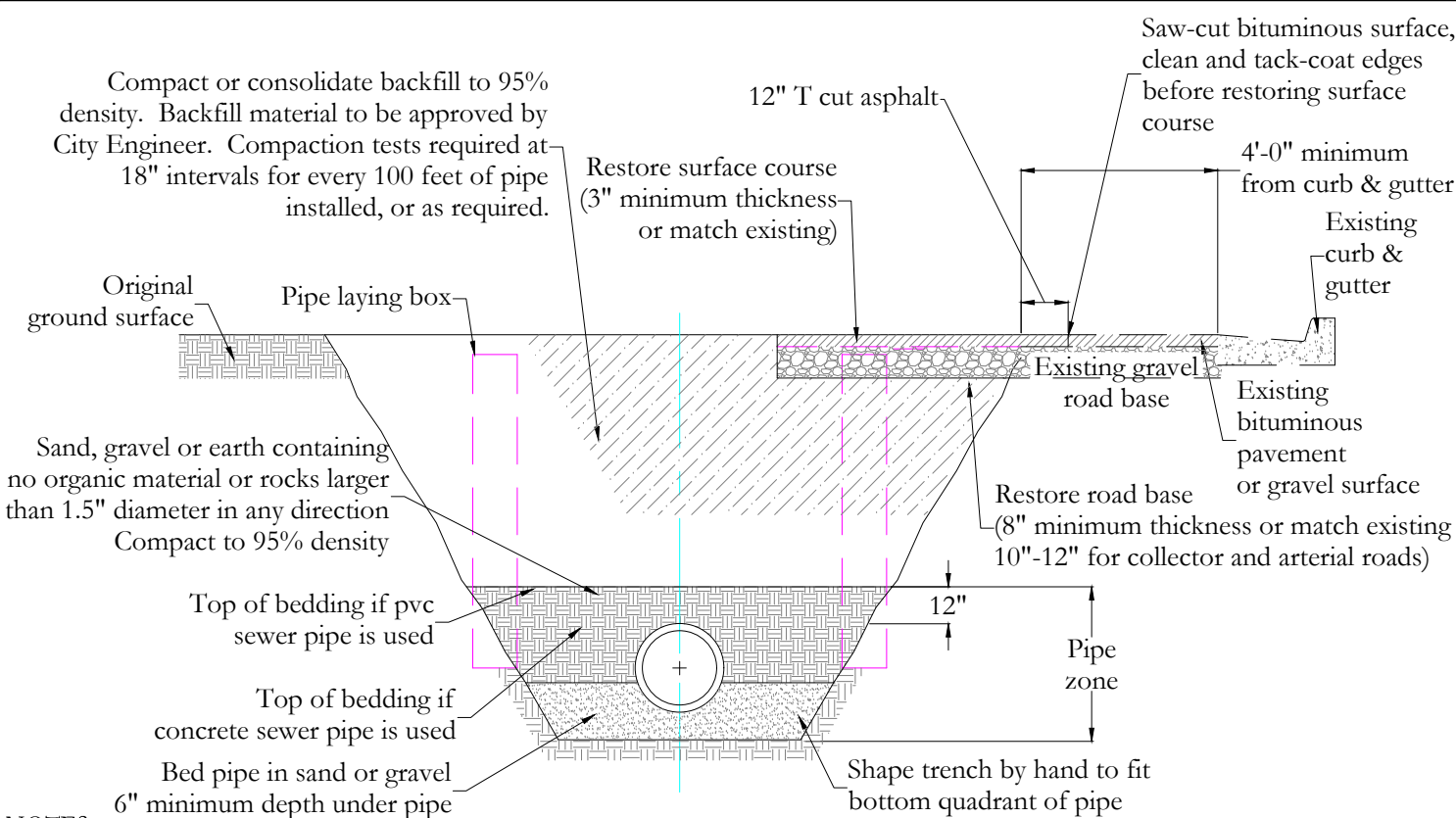
- Minor and major arterial streets shall be constructed with a 10" untreated base course and 3" bituminous surface course or as required.
- Minimum storm water pipe size is 15" diameter.
- Minimum water line size is 8" diameter.
- Minimum sanitary sewer line size is 8" diameter.
- Chip Seal Coat materials shall not be placed in a cul-de-sac. Substitute with Polymer Seal Coat materials (High density mineral bonds, Mastics, Onyx, HA5, Micro-surfacing, Slurry seals & others as approved).

15 MAY 26  
 No. 341144  
 R. TODD FREEMAN  
 PROFESSIONAL STRUCTURAL ENGINEER  
 STATE OF UTAH

PROJECT / LOCATION:  
 1200 WEST WATERLINE FROM  
 5450 SOUTH TO 5650 SOUTH (CUL-DE-SAC)  
 RIVERDALE, UTAH  
 TITLE:  
 DETAILS

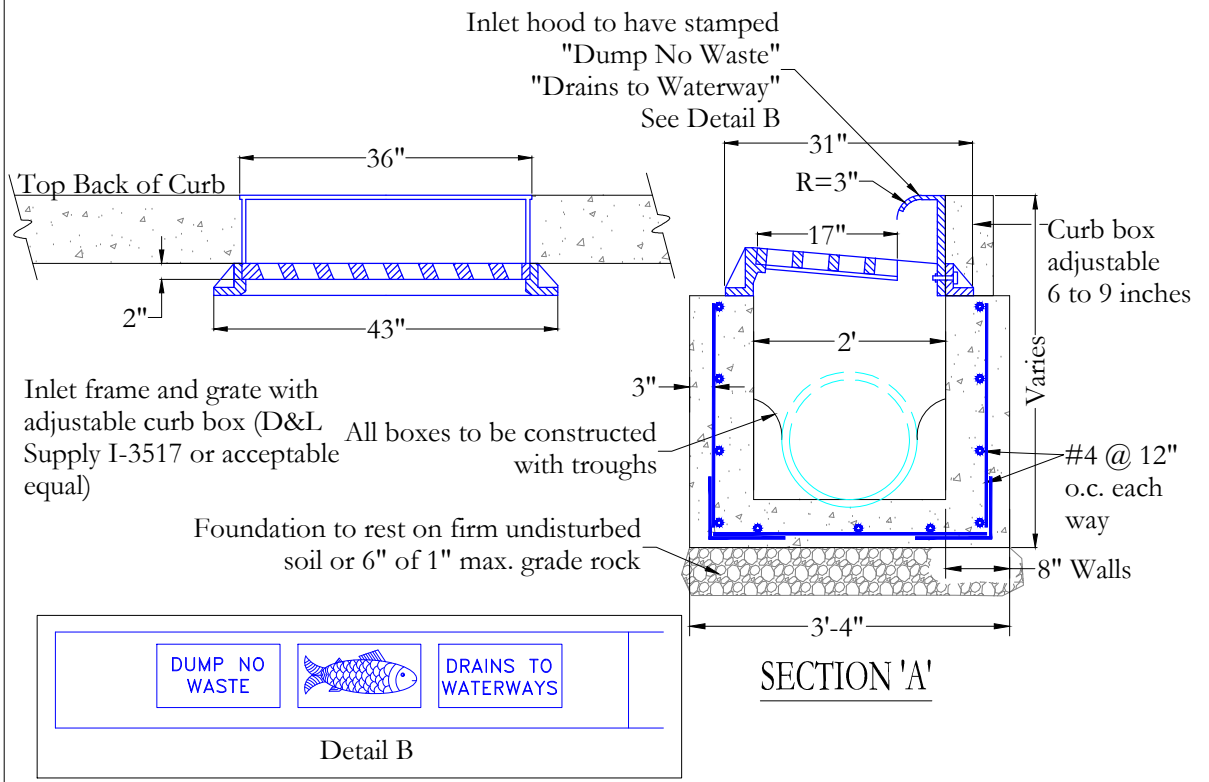
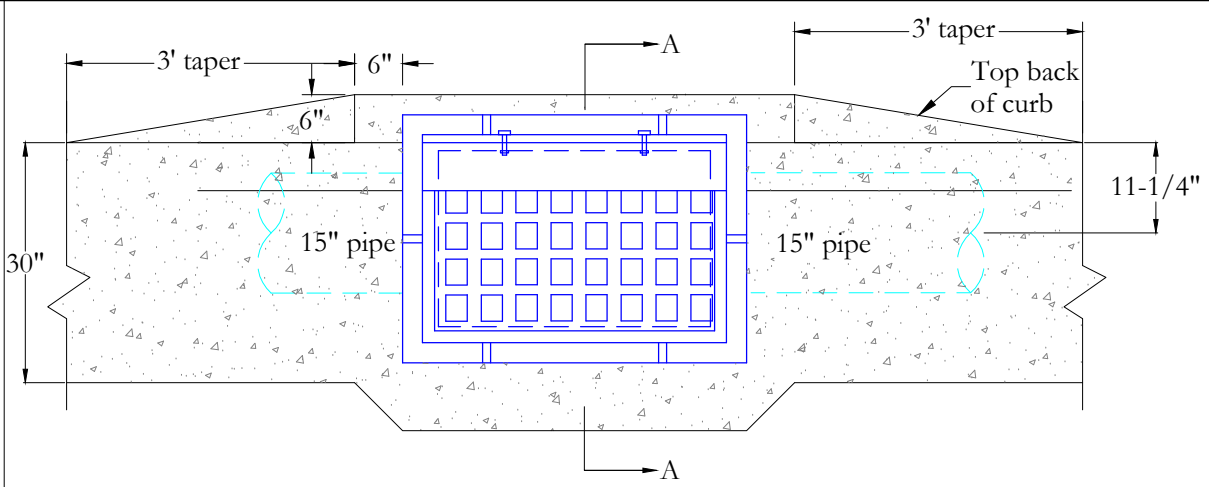
CLIENT: RIVERDALE CITY  
 PROJECT NUMBER: RC.25005  
 FILE: ~RC.25005 07 Details.dwg  
 SHEET: 10 of 14

LOCATION: Z:\CEC Clients\Riverdale City\Projects\RC.25005 1200 West Waterline\CADD C3D 2025\Planset\Addendum 2\CADD C3D 2025 Addendum 2 DATE: 5/27/2026 9:32 AM



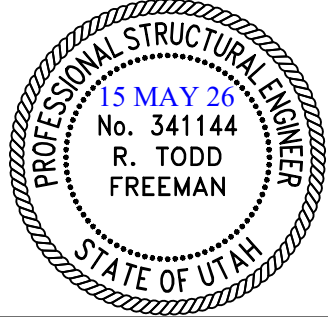
- NOTES:
1. The contractor shall be responsible for meeting all current OSHA and UOSH requirements for trench safety.
  2. Contractor shall locate all underground utilities before laying pipe within 200' of said utilities which may be exposed, damaged or crossed as shown on the drawings or as "blue staked" the contractor will make arrangements with the utility company to move the utility if necessary or obtain permission from the project engineer to modify grade of pipeline in order to go around utilities.
  3. All storm water pipes to be installed in roadway or under curb and gutter with approval by the City Engineer.
  4. Minimum pipe size for storm water pipe is 15" diameter and must be concrete.
  5. Minimum depth of storm water pipe shall be 24" cover over top of pipe bell for standard backfill material, or as approved by City Engineer.
  6. For all new construction, a storm water/oil/grit/debris separator is required. Sizing of the separation unit to be determined by the Design Engineer and stamped Engineering Calculations must be submitted for review.
  7. Upon completion of the project storm drainage system the installed pipe, manholes, junction boxes, inlet boxes and all storm water facilities must be cleaned in the presence of the Public Works Storm Water Manager. A video of the completed work is required upon completion of cleaning and should be given to Riverdale City.
  8. All Storm Water pipelines shall be air & displacement tested along with a video recording of the pipelines interior, per the requirements of "Section 6, Paragraph G" of the "Technical Specifications".
  9. All Storm Water pipelines shall be re-video recorded/taped for displacement failures just prior to the expiration of the 1-year warrantee period. Should the pipeline be displaced horizontally or vertically the Public Works Director and/or the City Engineer shall determine the extent of the required repairs. It shall be the Contractors full responsibility to immediately make all required repairs and all costs associated with the repairs shall be paid by the Contractor.
  10. All abandoned lines 6" and larger are to be flow filled with lean concrete. Manhole to be removed shall be removed to within the 24" above the abandoned pipe.

**STORM WATER  
TRENCH CROSS-SECTION** 1  
SCALE: NONE



- NOTES:
1. All storm water catch basins installed shall be cast-in-place. Any pre-cast boxes must be approved by Riverdale City prior to construction.
  2. All reinforcement shall be #4 deformed steel, grade 60.
  3. All reinforcement shall be placed at 12" o.c. each way in the floor and the walls.
  4. The adjustable curb box inlet grate shall be bicycle safe. D&L Supply I-3517 or acceptable equal.
  5. All pipes in the box shall be cut with the interior of the box and grouted smooth.
  6. Rebar shall have 3" clear on earth side of structure.

**HOODED  
CATCH BASIN** 2  
SCALE: NONE



**CEC**  
CIVIL ENGINEERING  
CONSULTANTS, PLLC.  
5141 SOUTH 1500 WEST  
RIVERDALE, UT 84405  
801.866.0550

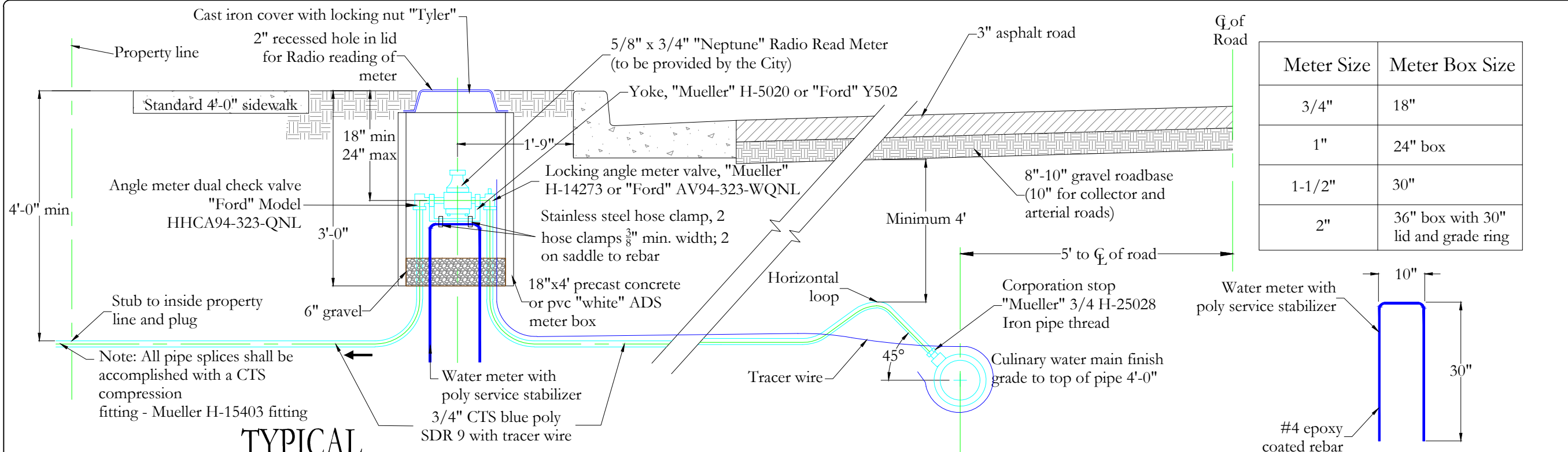
NO.	DATE	BY	REVISIONS

DATE: MAY 2026  
DRAWN: JEO/KSM  
CHECKED: RTF

PROJECT / LOCATION:  
1200 WEST WATERLINE FROM  
5450 SOUTH TO 5650 SOUTH (CUL-DE-SAC)  
RIVERDALE, UTAH  
TITLE: DETAILS

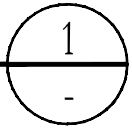
CLIENT: RIVERDALE CITY  
PROJECT NUMBER: RC.25005  
FILE: ~RC.25005 07 Details.dwg  
SHEET: 11 of 14

LOCATION: Z:\CEC Clients\Riverdale City\Projects\RC.25005 1200 West Waterline\~CADD C3D 2025\Addendum 2\~CADD C3D 2025 Addendum 2 DATE: 5/27/2026 9:32 AM



## TYPICAL WATER CONNECTION

SCALE: NONE

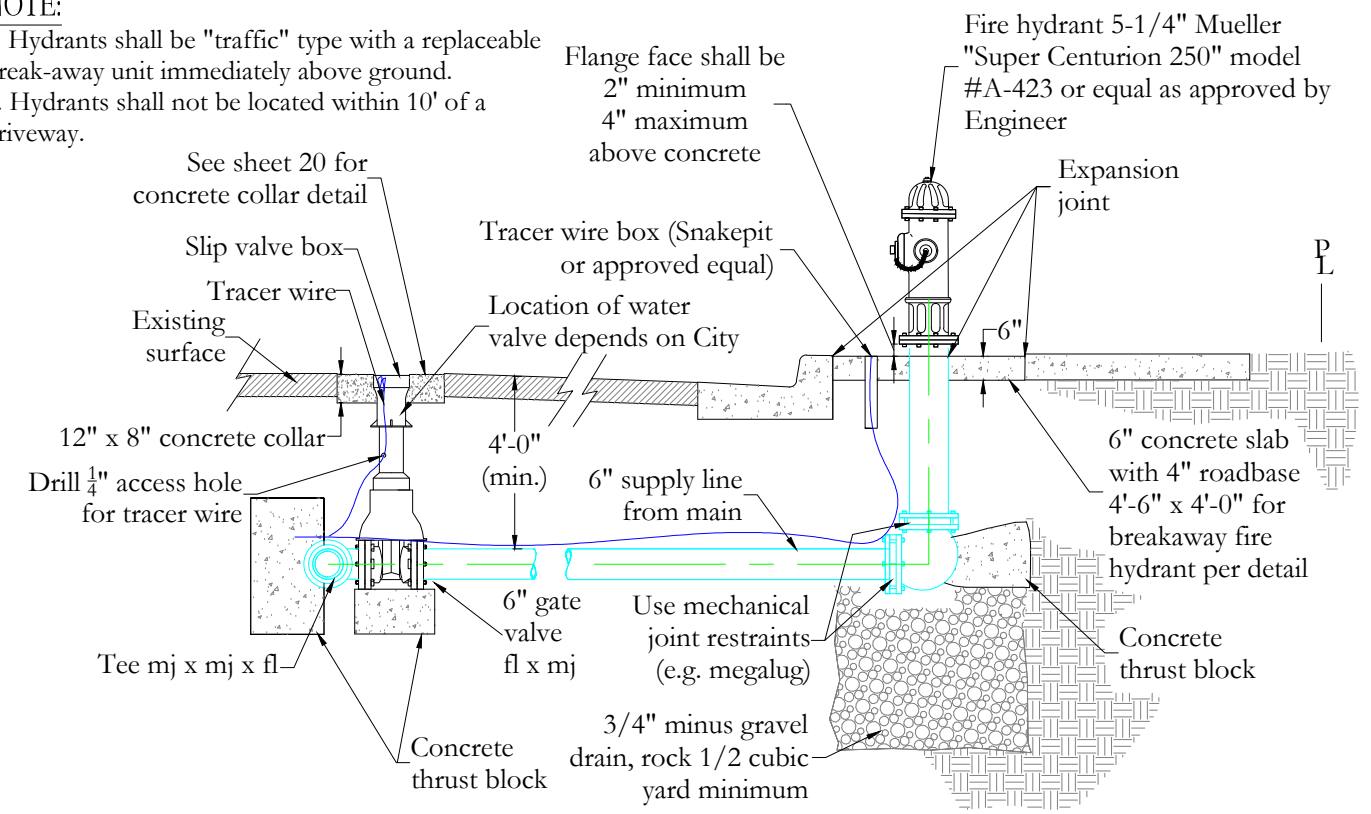


### NOTE:

- Hydrants shall be "traffic" type with a replaceable break-away unit immediately above ground.
- Hydrants shall not be located within 10' of a driveway.

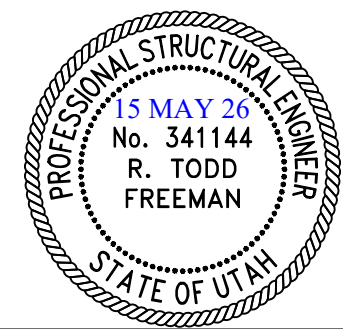
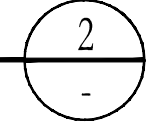
### NOTES:

- Backfill: Install backfill in lifts not exceeding 8" after compaction. Compact each lift to an average dry density of 95% with no density test result less than 92%.
- Residential water meters provided by City. Commercial and industrial water meters to be approved by City.
- Pipe: 3/4" CTS blue poly SDR 9 with tracer wire.
- Placement: All meters are to be centered in the park strip and must be placed near midpoint of the lot. Meters must not be located in a driveway, or in a sidewalk, and must be 24" away from driveway approaches.
- Property owner is responsible for service line from property side of meter.
- Taps to PVC C900 require brass double strap saddle. Direct taps not allowed to PVC. Direct taps to ductile iron are allowed.
- Back flow prevention devices are required.
- 1-1/2" and 2" meters require a meter setter Mueller H1423 with Mueller H15428 fittings or approved equal.
- All meters over 1" are required to have a bypass.
- Water meter size shall be the same size as the supply line into site.
- Any standards and specifications not shown shall follow all APWA specifications.
- All mechanical joint restraint (e.g. megalug) connections, flange fittings and all other fittings using connection bolts must be furnished and installed with blue bolts.
- No splices are allowed on tracer wire; continuous from fire hydrant to fire hydrant; fire hydrant shall have one line in and one line out. Locating wire to be installed on poly service.



## TYPICAL FIRE HYDRANT CONNECTION

SCALE: NONE



**CEC**  
 CIVIL ENGINEERING  
 CONSULTANTS, PLLC.  
 5141 SOUTH 1500 WEST  
 RIVERDALE, UT 84405  
 801.866.0550

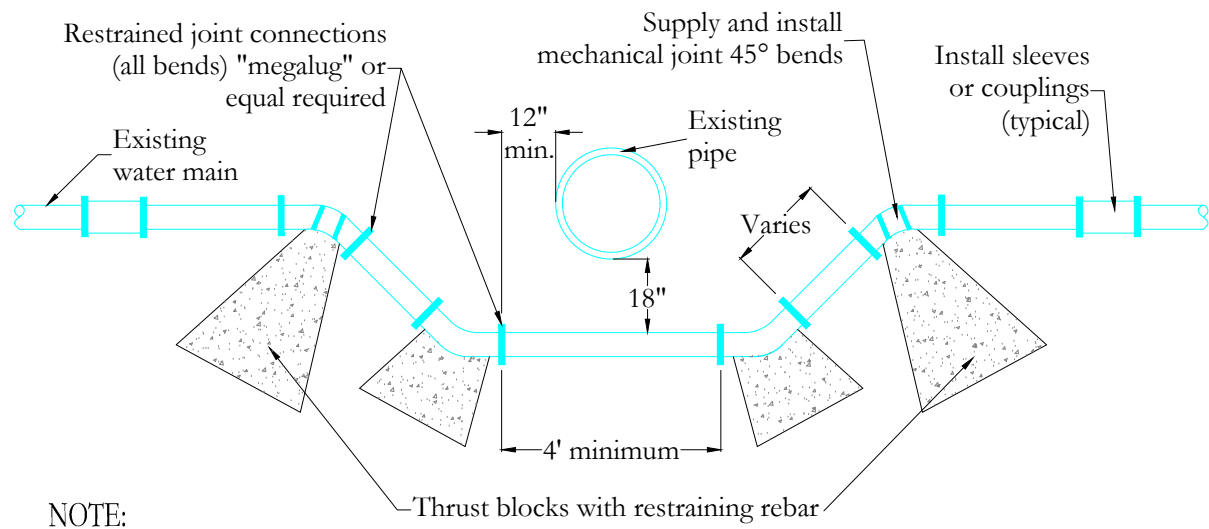
NO.	DATE	BY	REVISIONS

DATE: MAY 2026  
 DRAWN: JEO/KSM  
 CHECKED: RTF

PROJECT / LOCATION:  
 1200 WEST WATERLINE FROM  
 5450 SOUTH TO 5650 SOUTH (CUL-DE-SAC)  
 RIVERDALE, UTAH  
 TITLE: DETAILS

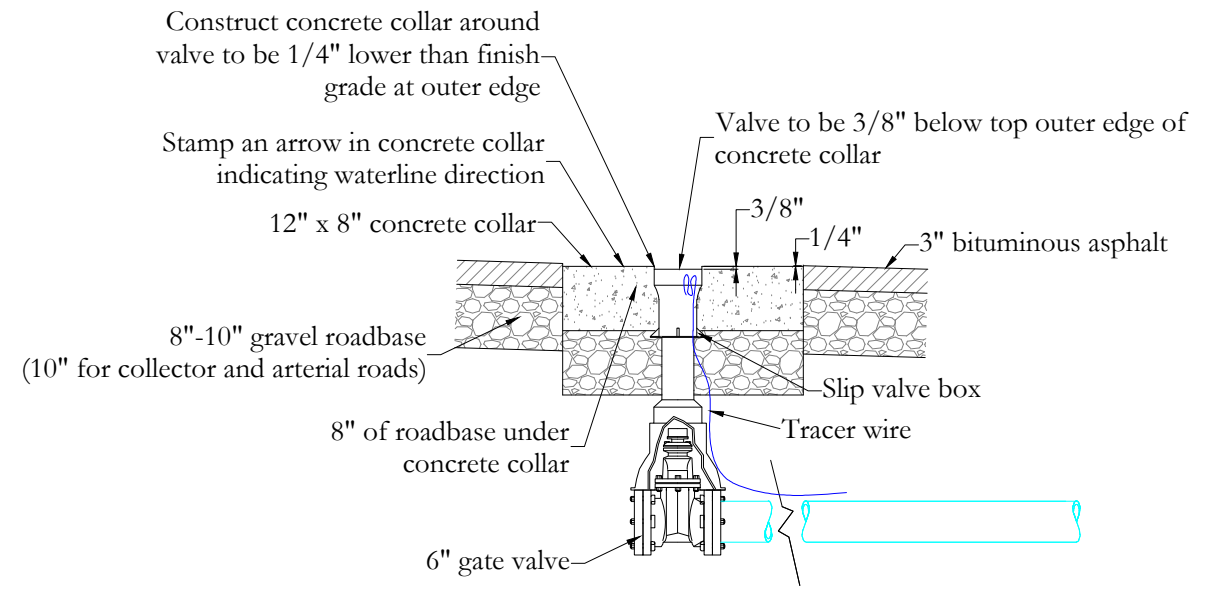
CLIENT: RIVERDALE CITY  
 PROJECT NUMBER: RC.25005  
 FILE: ~RC.25005 07 Details.dwg  
 SHEET: 12 of 14

LOCATION: Z:\CEC Clients\Rivdale City\Projects\RC.25005 1200 West Waterline\~CADD C3D 2025\Planset\~Addendum 2\~CADD C3D 2025 Addendum 2 DATE: 5/27/2026 9:32 AM

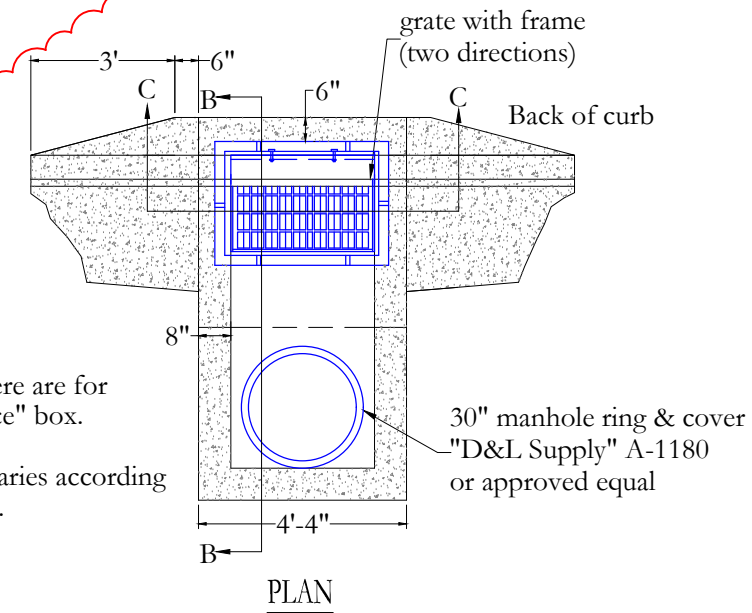


NOTE:  
City residents or commercial water users to be given 48-hour written notice before looping or shutting down any waterline.

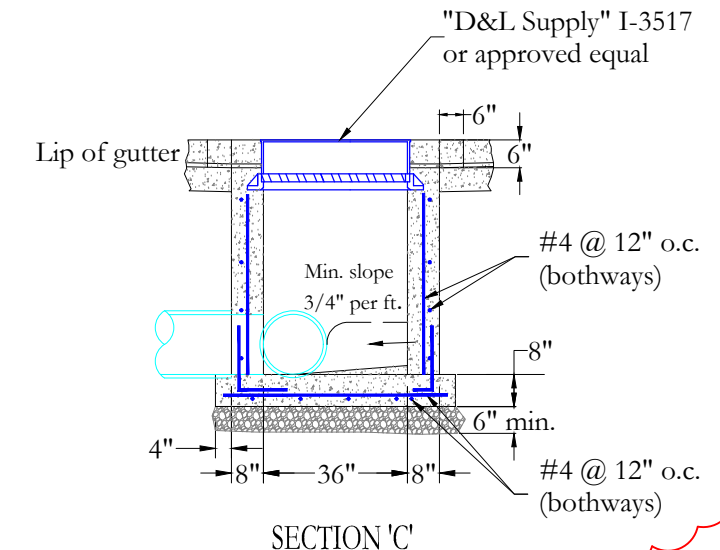
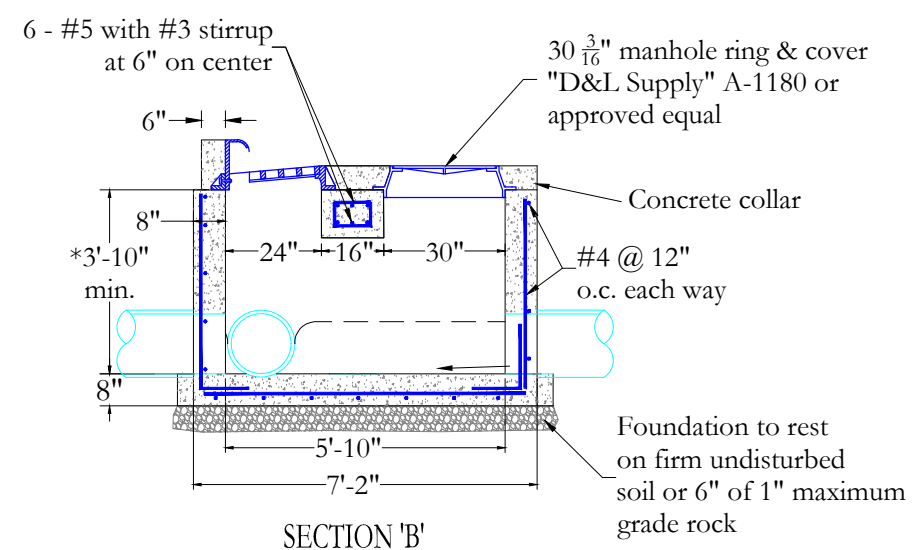
**TYPICAL WATER LOOP**  
SCALE: NONE



**GATE VALVE CONCRETE COLLAR**  
SCALE: NONE



NOTE:  
1. Details here are for "cast-in-place" box.  
2. \*Depth varies according to the grade.



**HOODED COMBINATION BOX**  
SCALE: NONE

21 MAY 26  
No. 341144  
R. TODD FREEMAN  
PROFESSIONAL STRUCTURAL ENGINEER  
STATE OF UTAH

**CEC**  
CIVIL ENGINEERING CONSULTANTS, PLLC.  
5141 SOUTH 1500 WEST  
RIVERDALE, UT 84405  
801.866.0550

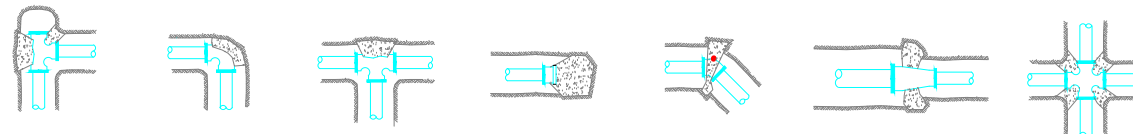
NO.	DATE	BY	REVISIONS
1	5/21/26	RTF	change catch basins to combination boxes

DATE: MAY 2026  
DRAWN: JEO/KSM  
CHECKED: RTF

PROJECT / LOCATION:  
1200 WEST WATERLINE FROM  
5450 SOUTH TO 5650 SOUTH (CUL-DE-SAC)  
RIVERDALE, UTAH  
TITLE: DETAILS

CLIENT: RIVERDALE CITY  
PROJECT NUMBER: RC.25005  
FILE: ~RC.25005 07 Details.dwg  
SHEET: 13 of 14

LOCATION: Z:\CEC Clients\Rivdale City\Projects\RC.25005 1200 West Waterline\~CADD C3D 2025\Plans\~Addendum 2\~CADD C3D 2025 Addendum 2 DATE: 5/27/2026 9:32 AM



Tee with cap    90° elbow    Tee    Cap or plug    Elbow    Reducer    Cross

All utility trenching within road right-of-ways which are 66' wide or wider shall have flowable backfill material

Safe bearing loads	
Soil type	Safe bearing load (lb/ft <sup>2</sup> )
Sand	1000
Sand & gravel	1500
Sand & gravel cemented with clay	2000
Shale	5000

Thrust block area against trench wall (square feet) = Thrust on fitting / Safe bearing load of soil

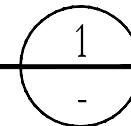
All trenching for service connections shall have 100% roadbase backfill material above the pipe zone within any road right-of-way

Thrust on fittings in pounds @ 1 pound per square inch of water pressure *				
Pipe size	Tees	90° bends	45° bends	22.5° bends
8"	65.8	93	50.4	25.5
10"	107.5	152	82.4	41.7
12"	153.1	216.4	117.2	59.4

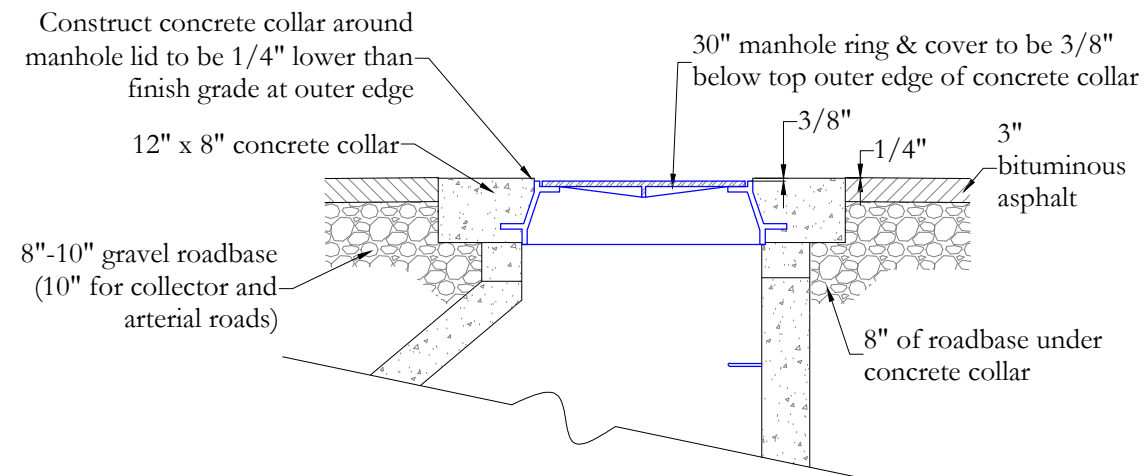
\* multiply thrust by maximum water pressure

## CONCRETE THRUST BLOCK DETAILS\*

SCALE: NONE

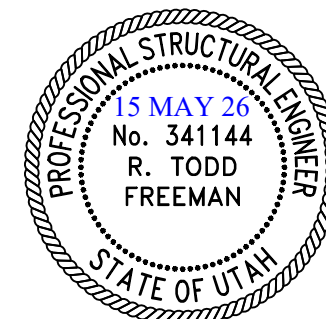
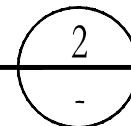


\*All bolts on pipe fittings to be kept clear of concrete. Mega-lugs or One-lok to be used with thrust blocks



## MANHOLE CONCRETE COLLAR DETAIL

SCALE: NONE



**CEC**  
 CIVIL ENGINEERING CONSULTANTS, PLLC.  
 5141 SOUTH 1500 WEST  
 RIVERDALE, UT 84405  
 801.866.0550

NO.	DATE	BY	REVISIONS

DATE: MAY 2026  
 DRAWN: JEO/KSM  
 CHECKED: RTF

PROJECT / LOCATION:  
 1200 WEST WATERLINE FROM  
 5450 SOUTH TO 5650 SOUTH (CUL-DE-SAC)  
 RIVERDALE, UTAH  
 TITLE: DETAILS

CLIENT: RIVERDALE CITY  
 PROJECT NUMBER: RC.25005  
 FILE: ~RC.25005 07 Details.dwg  
 SHEET: 14 of 14

LOCATION: Z:\CEC Clients\Riverdale City\Projects\RC.25005 1200 West Waterline\~CADD C3D 2025\Plans\~Addendum 2\~CADD C3D 2025 Addendum 2 DATE: 5/27/2026 9:32 AM

**STORM WATER POLLUTION PREVENTION PLAN**  
**1200 WEST WATERLINE FROM**  
**5400 SOUTH TO 5650 SOUTH (CUL-DE-SAC)**

**SCOPE OF PROJECT**

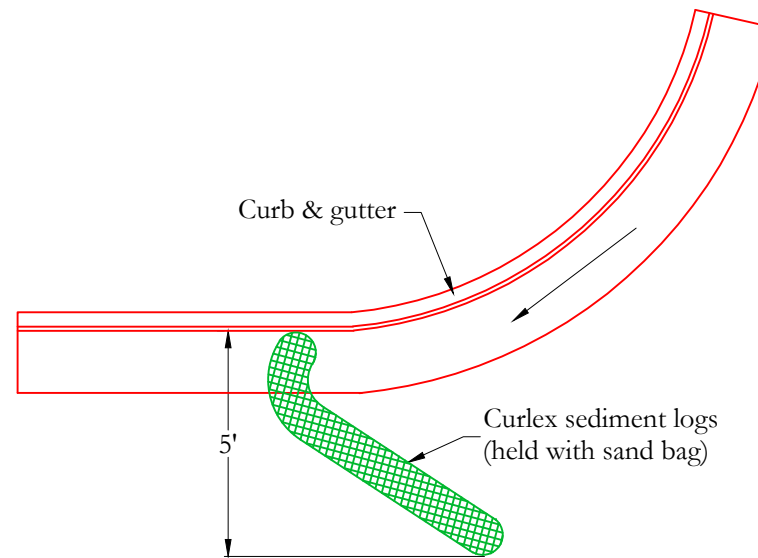
The work includes furnishing all labor, tools, materials, equipment, transportation, and services required for construction of the above projects; consisting of the following items of work: mobilization; obtaining all bonds and insurance, removal of curb & gutter, and sidewalk; removal of asphalt and roadbase; installation of approximately 1,710 feet of 8" PVC C-900 DR18 waterline; remove and upgrade fire hydrants; updating water meters and service lines; installation of asphalt; installation of curb & gutter, sidewalk and handicap ramps, and miscellaneous landscaping and all appurtenant work in accordance with the Drawings and Specifications prepared by the Engineer, CEC, Civil Engineering Consultants, PLLC.

**SITE DETAILS**

1. The Construction site is located within the boundaries of Riverdale City, Weber County. Estimated area that will be developed is 2.85 acres. The construction will be limited to the land contained within the right-of-way as shown on the drawings.
2. The Coefficient of Run-off following construction will not be changed
3. The collection and detention of storm water will follow the Riverdale City approved design drawings.
4. The drainage pattern on the existing site will be altered minorly. The direction of storm water flow will remain the same. The only changes will be how the rainfall/storm water will be collected & directed.
5. The construction boundaries are shown on the improvement drawings and are limited to existing and new right-of-way.

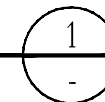
**MISCELLANEOUS NOTES**

1. The construction wash out area is to be used for on-site construction activities only.
2. The contractor shall furnish portable restroom facilities and locate in a secure area.
3. The contractor shall establish a monitoring process to document the management of all Best Management Practices established on site. The monitoring process shall be noted, documented and maintained on a weekly basis.



**CURLEX SEDIMENT LOG PROTECTION**

SCALE: NONE



CIVIL ENGINEERING  
CONSULTANTS, PLLC.  
5141 SOUTH 1500 WEST  
RIVERDALE, UT 84405  
801.866.0550

NO.	DATE	BY	REVISIONS

DATE: MAY 2026  
 DRAWN: JEO/KSM  
 CHECKED: RTF

PROJECT / LOCATION:  
 1200 WEST WATERLINE FROM  
 5450 SOUTH TO 5650 SOUTH (CUL-DE-SAC)  
 RIVERDALE, UTAH

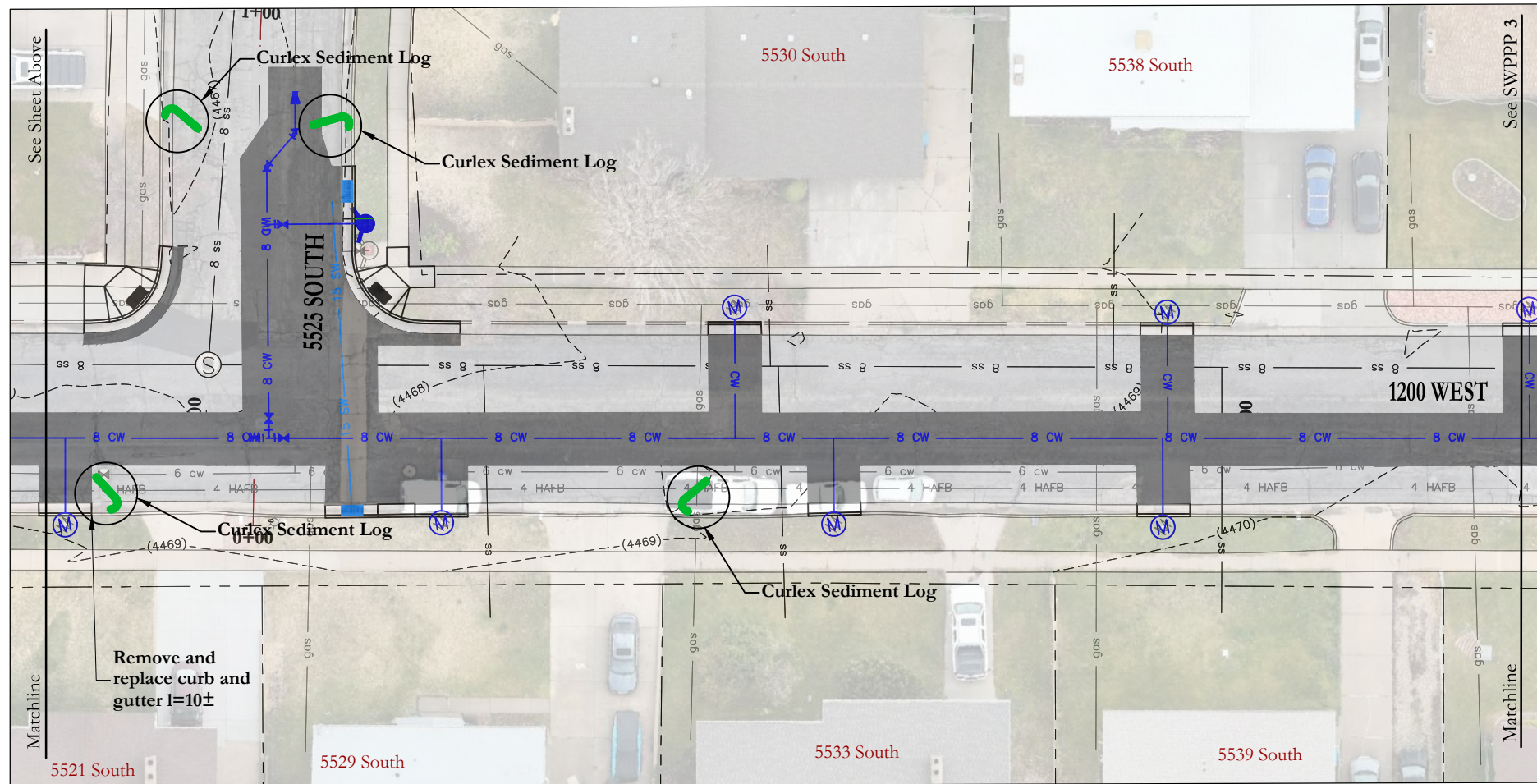
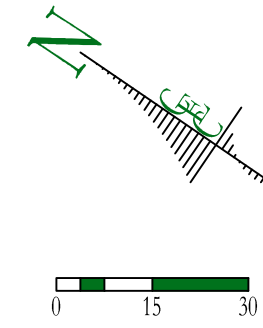
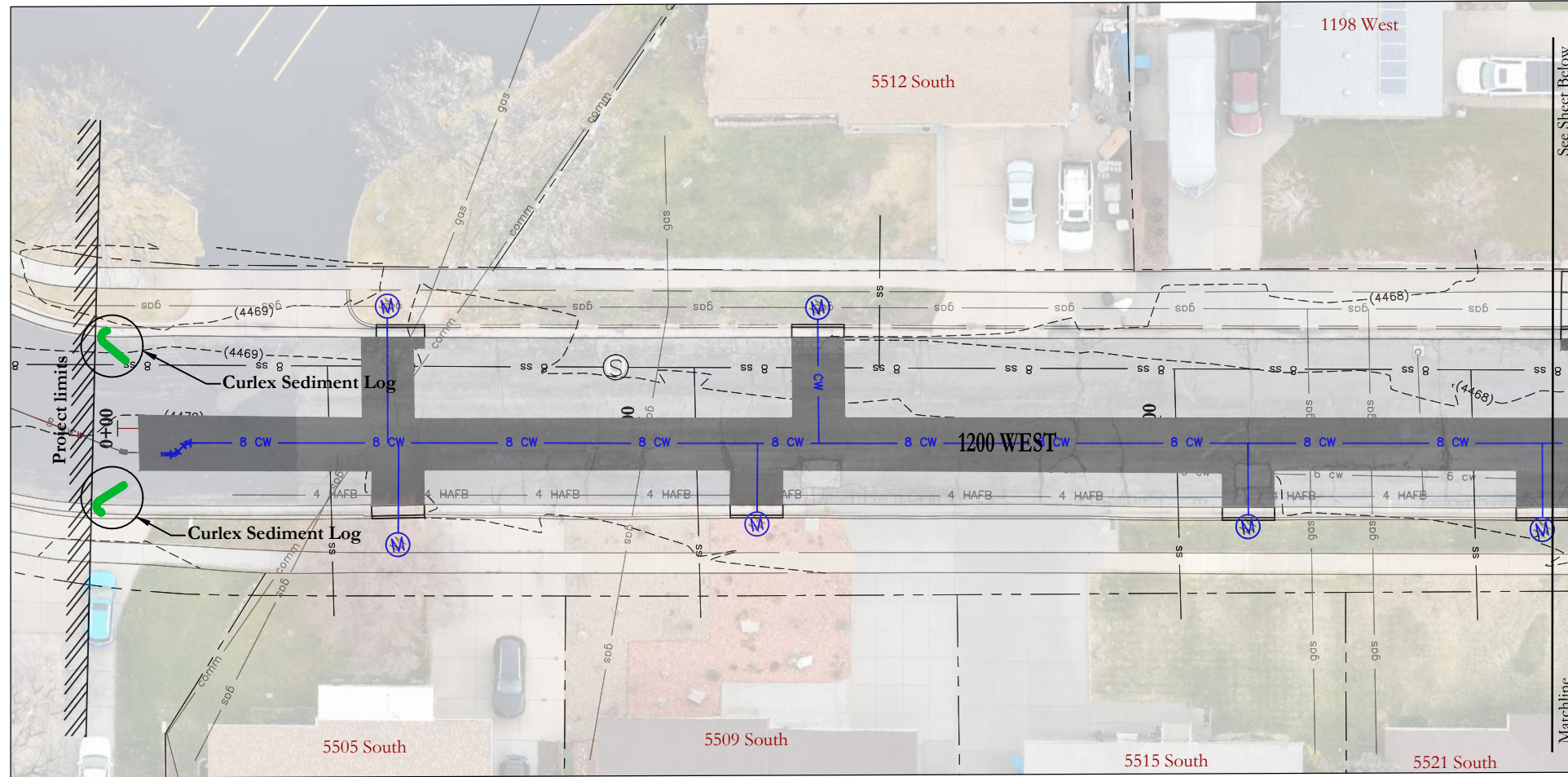
TITLE:  
 SWPPP NOTES & DETAILS

CLIENT:  
 RIVERDALE CITY

PROJECT NUMBER:  
 RC.25005

FILE:  
 ~RC.25005 SWPPP.dwg

SHEET:  
 SWPPP 1



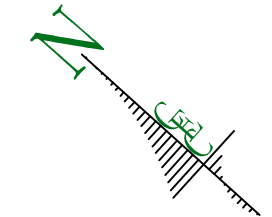
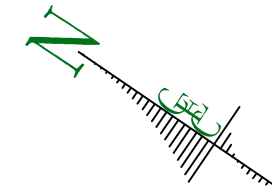
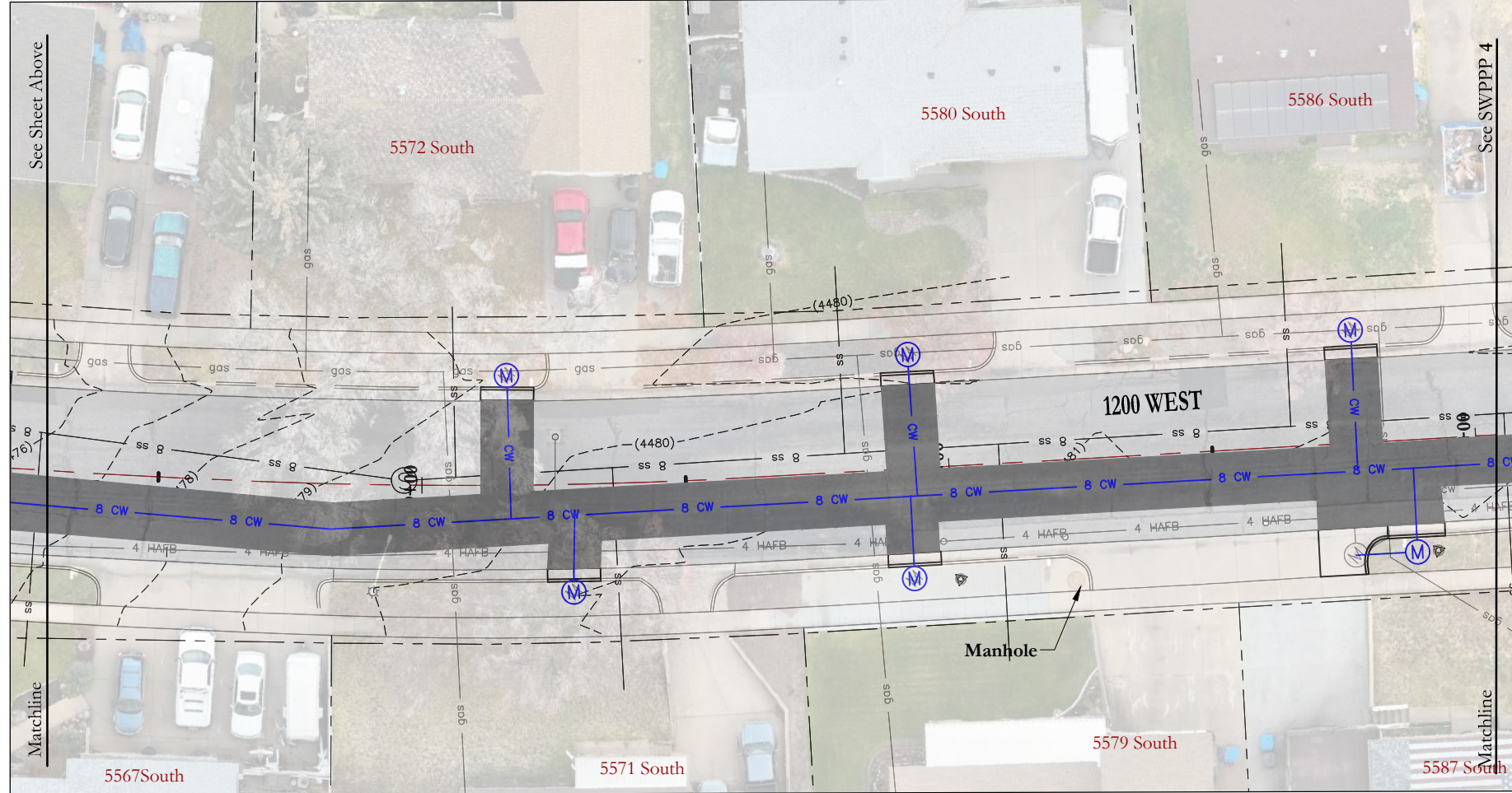
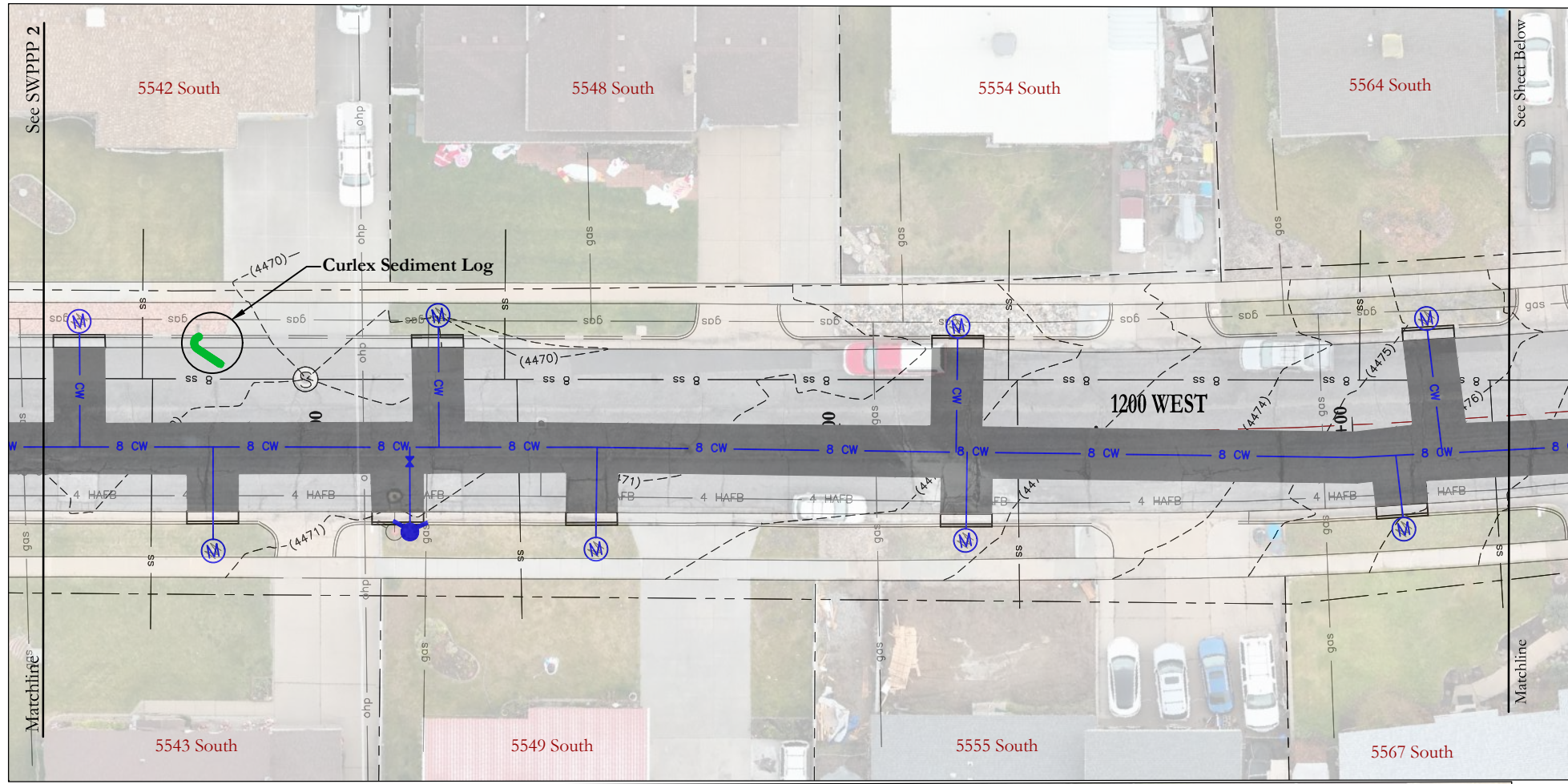
**CEC**  
 CIVIL ENGINEERING  
 CONSULTANTS, PLLC.  
 5141 SOUTH 1500 WEST  
 RIVERDALE, UT 84405  
 801.866.0550

NO.	DATE	BY	REVISIONS

DATE: MAY 2026  
 DRAWN: JEO/KSM  
 CHECKED: RTF

PROJECT / LOCATION:  
 1200 WEST WATERLINE FROM  
 5450 SOUTH TO 5650 SOUTH (CUL-DE-SAC)  
 RIVERDALE, UTAH  
 TITLE:  
 SWPPP SITE PLAN

CLIENT:  
 RIVERDALE CITY  
 PROJECT NUMBER:  
 RC.25005  
 FILE:  
 ~RC.25005 SWPPP.dwg  
 SHEET:  
 SWPPP 2



**CEC**  
 CIVIL ENGINEERING  
 CONSULTANTS, PLLC.  
 5141 SOUTH 1500 WEST  
 RIVERDALE, UT 84405  
 801.866.0550

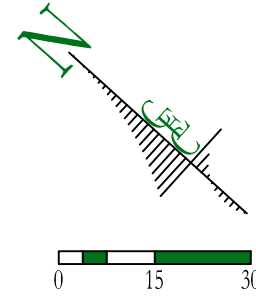
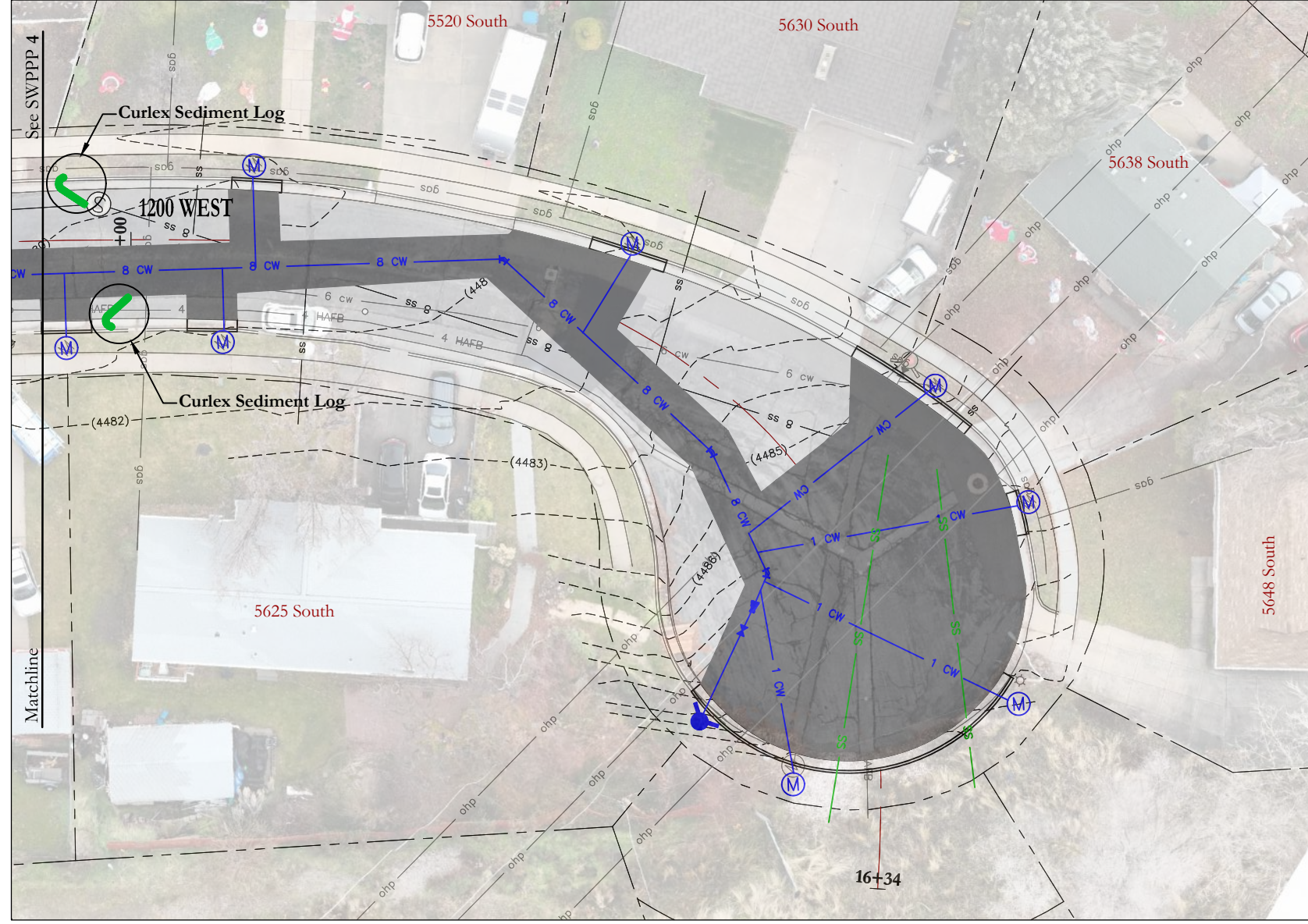
NO.	DATE	BY	REVISIONS

DATE: MAY 2026  
 DRAWN: JEO/KSM  
 CHECKED: RTF

PROJECT / LOCATION:  
 1200 WEST WATERLINE FROM  
 5450 SOUTH TO 5650 SOUTH (CUL-DE-SAC)  
 RIVERDALE, UTAH  
 TITLE:  
 SWPPP SITE PLAN

CLIENT:  
 RIVERDALE CITY  
 PROJECT NUMBER:  
 RC.25005  
 FILE:  
 ~RC.25005 SWPPP.dwg  
 SHEET:  
 SWPPP 3





CIVIL ENGINEERING  
CONSULTANTS, PLLC.  
5141 SOUTH 1500 WEST  
RIVERDALE, UT 84405  
801.866.0550

NO.	DATE	BY	REVISIONS

DATE: MAY 2026  
DRAWN: JEO/KSM  
CHECKED: RTF

PROJECT / LOCATION:  
1200 WEST WATERLINE FROM  
5450 SOUTH TO 5650 SOUTH (CUL-DE-SAC)  
RIVERDALE, UTAH  
TITLE:  
SWPPP SITE PLAN

CLIENT:  
RIVERDALE CITY  
PROJECT NUMBER:  
RC.25005  
FILE:  
~RC.25005 SWPPP.dwg  
SHEET:  
SWPPP 5