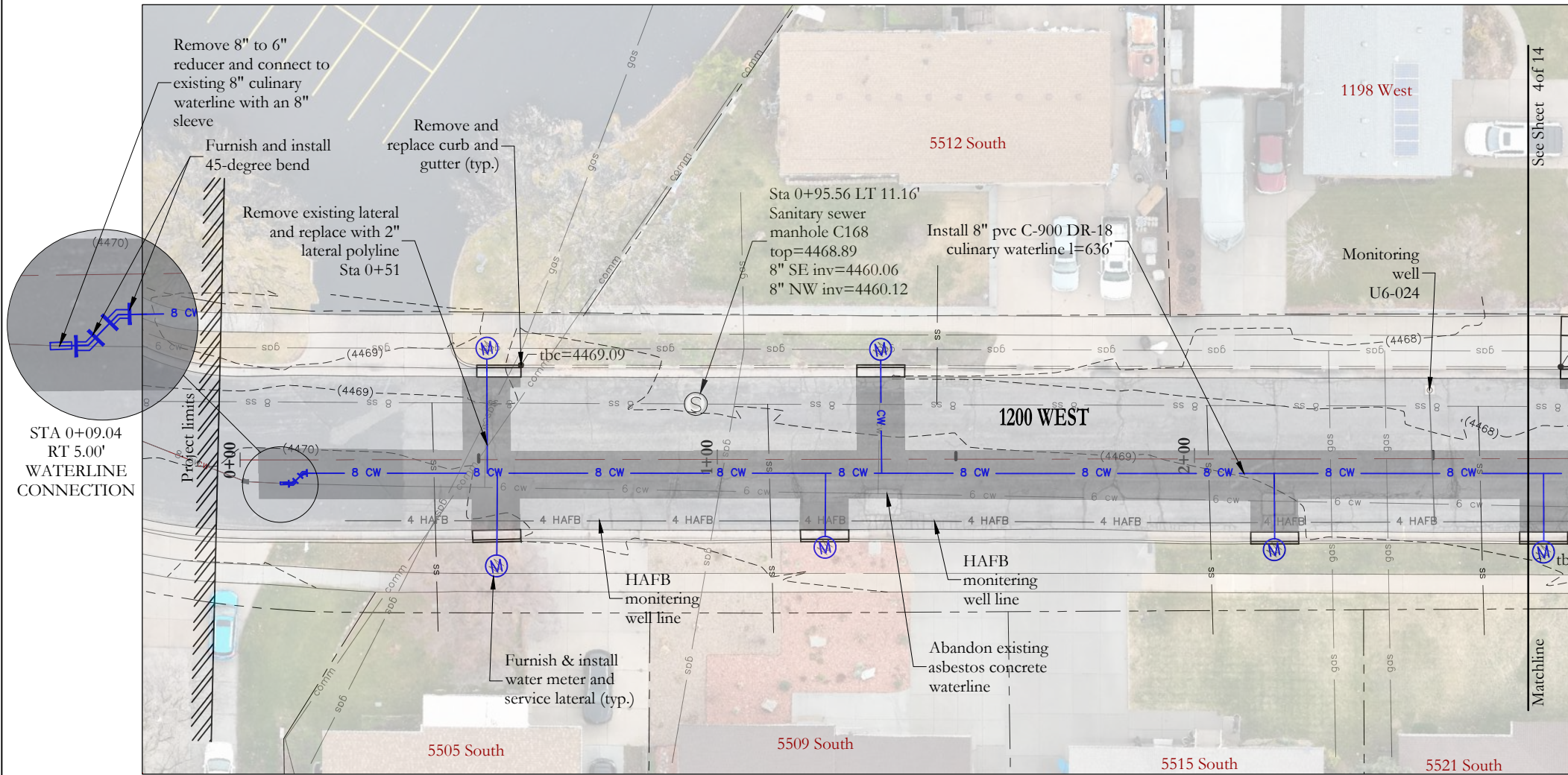
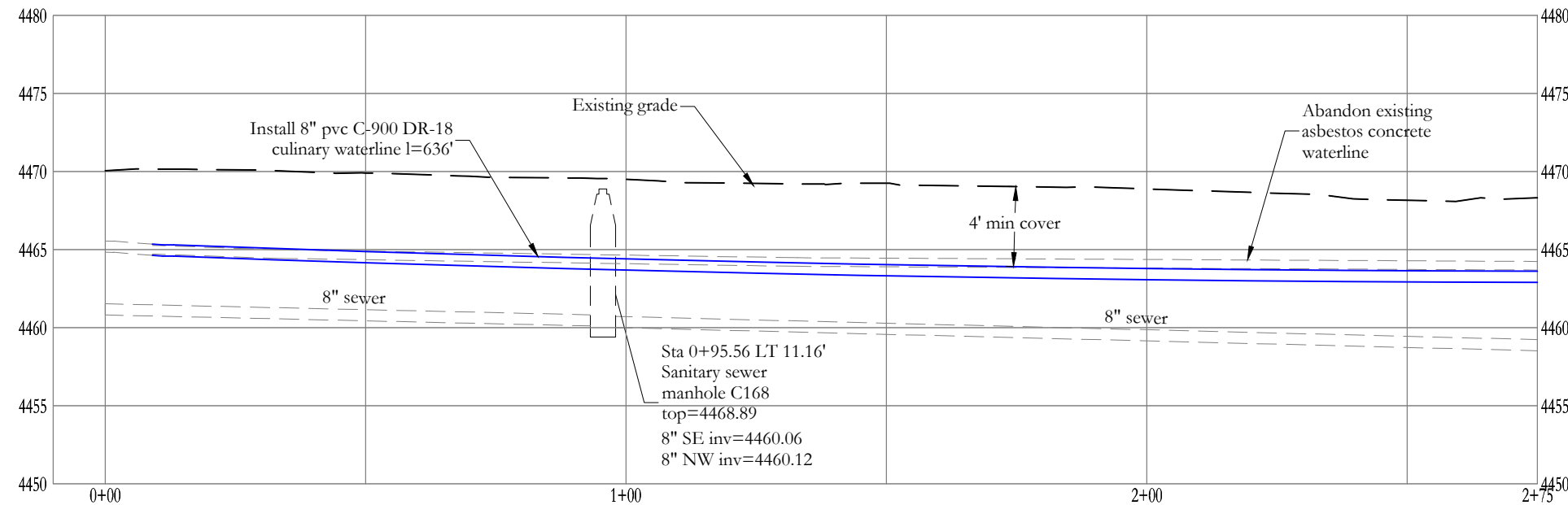


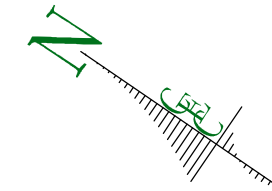
LOCATION: Z:\CEC Clients\Riverdale City\Projects\RC.25005 1200 West Waterline\~CADD C3D 2025\Planset\~Addendum 1\~CADD C3D 2025 DATE: 5/22/2026 9:03 AM



STA 0+09.04
RT 5.00'
WATERLINE
CONNECTION

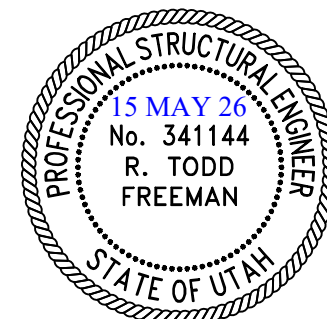


No HAFB mag marker stations on this sheet



NOTES:

- Contractor shall locate/pothole existing waterline to determine the best location for new 8" waterline.
- Maintain a minimum of 10' separation between waterline and sewer line (edge to edge).
- Reconnect all water service laterals to connect to new 8" waterline.
- All mechanical joint restraint (e.g. megalug) connections, flange fitting and all other fittings using connection bolts must be furnished and installed with bluebolts.
- All MJ connections to be restrained with restrained joints and thrust blocks. Wrap all fittings with plastic prior to pouring thrust blocks.
- Utilities shown are for information purposes only. The contractor shall pothole to verify utilities location as necessary.
- Waterline to be buried with 4' of cover (minimum).
- Protect all existing utilities (e.g. storm water, sanitary sewer, etc.).
- The contractor shall use equipment such that it will not damage the existing curb & gutter. Any curb & gutter damaged will be replaced at the Contractor's expense.
- Water service laterals to be 3/4", 1" & 2" CTS blue poly pipe (DR-9). Tracing wire (size and type per city specifications) shall be installed with the blue poly pipe.
- For all water valves being abandoned in place, remove the concrete collar, the top 1/2 of the sleeve and fill the remaining sleeve with concrete.
- HAFB Mag utility 4" pipe 3' depth from top of road, contractor to verify.
- Remove and replace HAFB Mag markers in pavement as needed.
- All numbered HAFB monitoring wells listed are active as of email from Julie McNeil at Air Force Civil Engineer Center date May 9th 2025.
- Existing pipe being abandoned shall be capped at all open ends in the ground.
- Contractor shall verify all sewer laterals being crossed with the trench as to not damage them.
- Contractor to be careful installing the stormwater pipe when crossing the 4" HAFB, the existing waterline and the sewer line.



CTS
CIVIL ENGINEERING
CONSULTANTS, PLLC.
5141 SOUTH 1500 WEST
RIVERDALE, UT 84405
801.866.0550

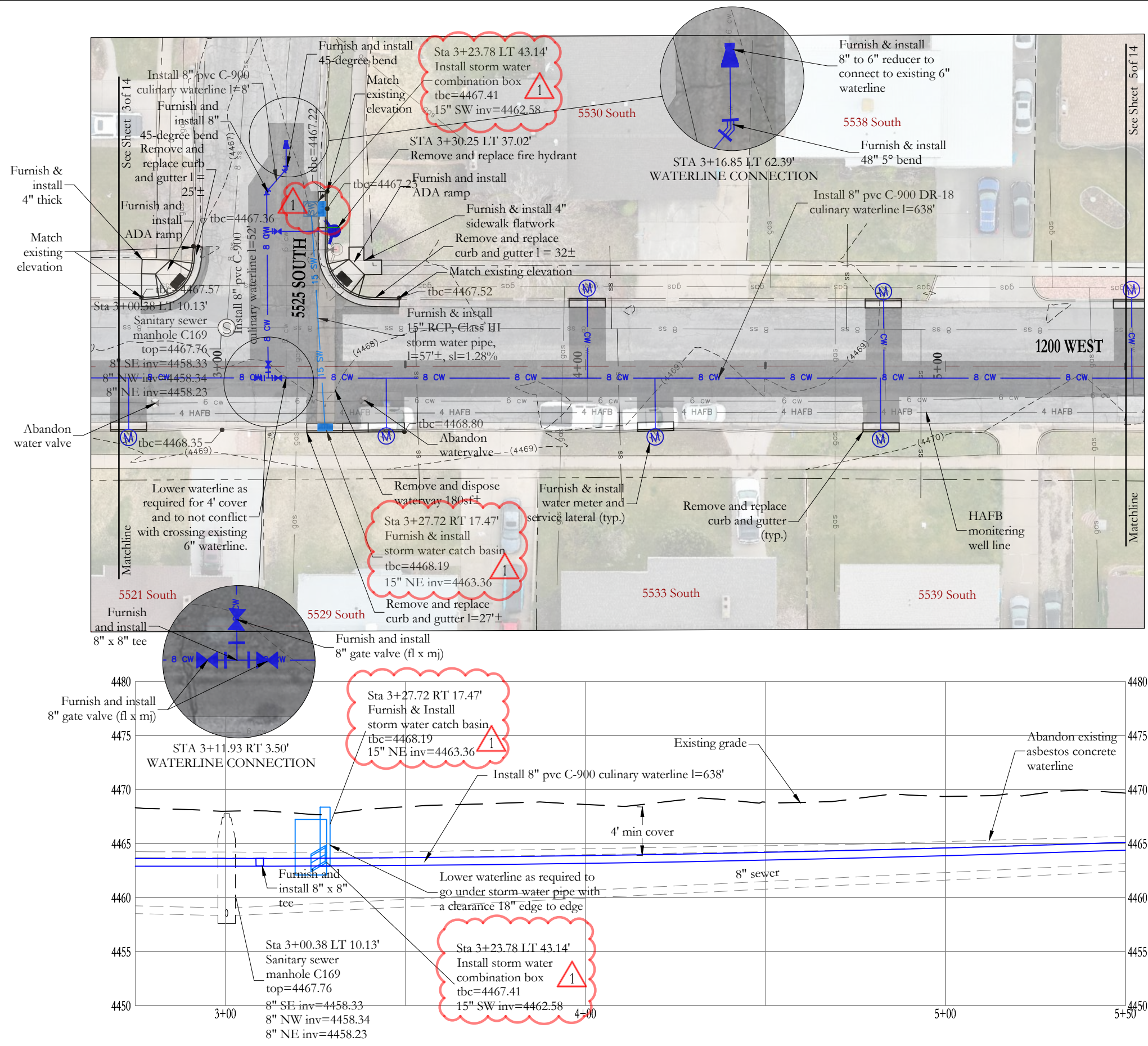
NO.	DATE	BY	REVISIONS

DATE: MAY 2026
DRAWN: JEO/KSM
CHECKED: RTF

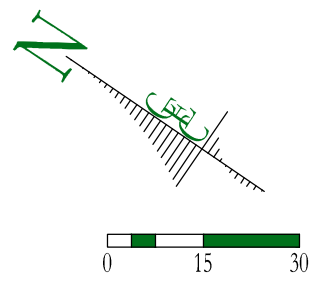
PROJECT / LOCATION:
1200 WEST WATERLINE FROM
5450 SOUTH TO 5650 SOUTH (CUL-DE-SAC)
RIVERDALE, UTAH
TITLE:
PLAN & PROFILE: STA 0+00 - 2+75

CLIENT: RIVERDALE CITY
PROJECT NUMBER: RC.25005
FILE: ~RC.25005 03 Site.dwg
SHEET: 3 of 14

LOCATION: Z:\CEC Clients\Riverdale City\Projects\RC.25005 1200 West Waterline\~CADD C3D 2025\Planset\~Addendum 1\~CADD C3D 2025 DATE: 5/22/2026 9:03 AM

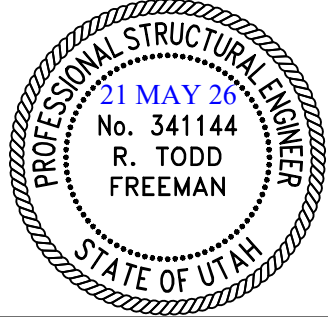


No HAFB mag marker stations on this sheet



NOTES:

- Contractor shall locate/pothole existing waterline to determine the best location for new 8" waterline.
- Maintain a minimum of 10' separation between waterline and sewer line (edge to edge).
- Reconnect all water service laterals to connect to new 8" waterline.
- All mechanical joint restraint (e.g. megalug) connections, flange fitting and all other fittings using connection bolts must be furnished and installed with bluebolts.
- All MJ connections to be restrained with restrained joints and thrust blocks. Wrap all fittings with plastic prior to pouring thrust blocks.
- Utilities shown are for information purposes only. The contractor shall pothole to verify utilities location as necessary.
- Waterline to be buried with 4' of cover (minimum).
- Protect all existing utilities (e.g. storm water, sanitary sewer, etc.).
- The contractor shall use equipment such that it will not damage the existing curb & gutter. Any curb & gutter damaged will be replaced at the Contractor's expense.
- Water service laterals to be 3/4", 1" & 2" CTS blue poly pipe (DR-9). Tracing wire (size and type per city specifications) shall be installed with the blue poly pipe.
- For all water valves being abandoned in place, remove the concrete collar, the top 1/2 of the sleeve and fill the remaining sleeve with concrete.
- HAFB Mag utility 4" pipe 3' depth from top of road, contractor to verify.
- Remove and replace HAFB Mag markers in pavement as needed.
- All numbered HAFB monitoring wells listed are active as of email from Julie McNeil at Air Force Civil Engineer Center date May 9th 2025.
- Existing pipe being abandoned shall be capped at all open ends in the ground.
- Contractor shall verify all sewer laterals being crossed with the trench as to not damage them.
- Contractor to be careful installing the stormwater pipe when crossing the 4" HAFB, the existing waterline and the sewer line.



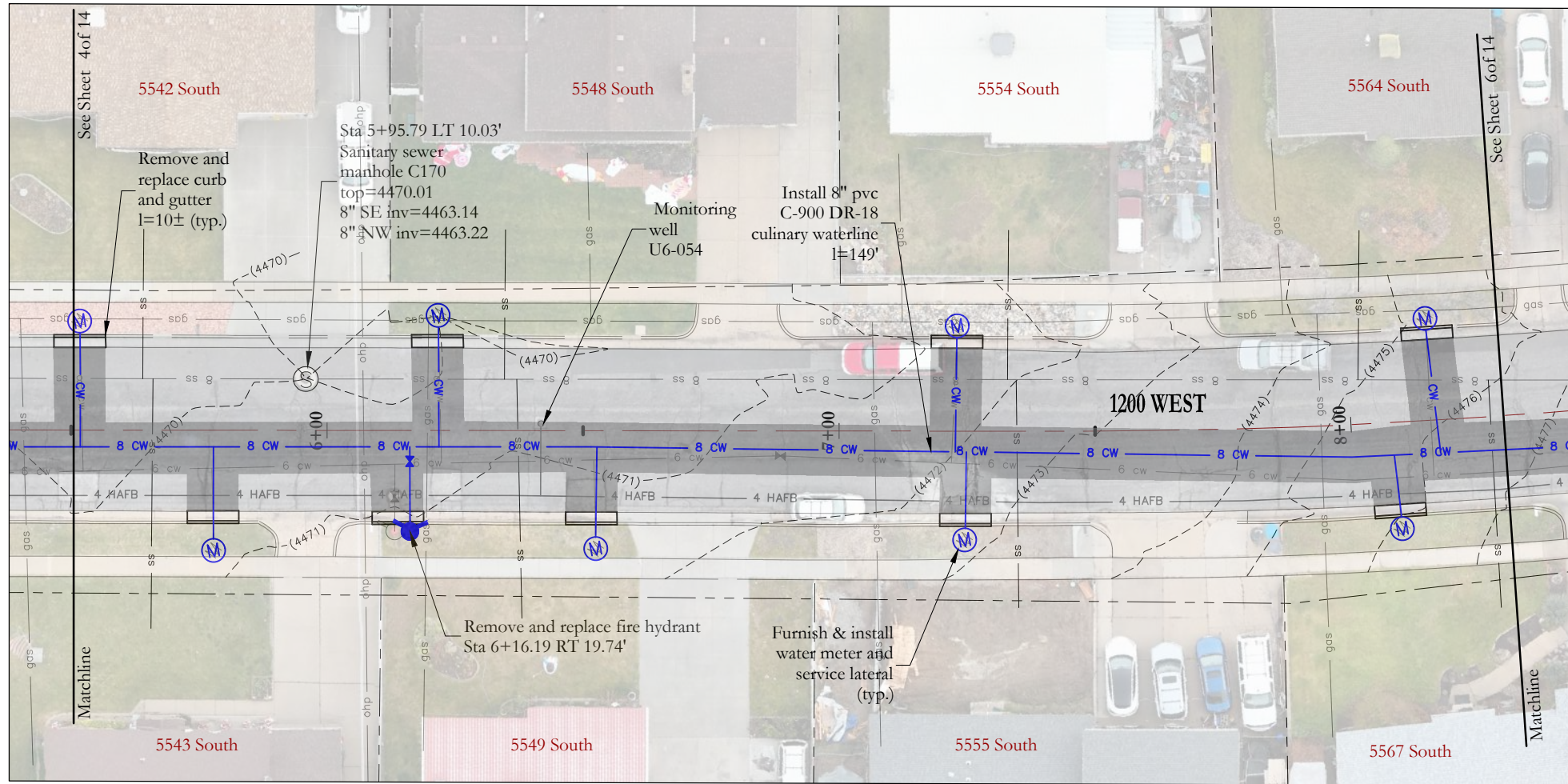
CEC
 CIVIL ENGINEERING CONSULTANTS, PLLC.
 5141 SOUTH 1500 WEST
 RIVERDALE, UT 84405
 801.866.0550

NO.	DATE	BY	REVISIONS
1	5/21/26	RTF	change catch basins to combination boxes

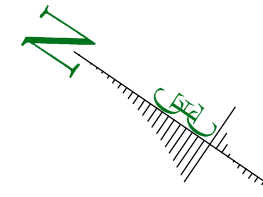
DATE: MAY 2026
 DRAWN: JEO/KSM
 CHECKED: RTF

PROJECT / LOCATION:
 1200 WEST WATERLINE FROM
 5450 SOUTH TO 5650 SOUTH (CUL-DE-SAC)
 RIVERDALE, UTAH
 TITLE:
 PLAN & PROFILE: STA 2+75 - 5+50

CLIENT: RIVERDALE CITY
 PROJECT NUMBER: RC.25005
 FILE: ~RC.25005 03 Site.dwg
 SHEET: 4 of 14



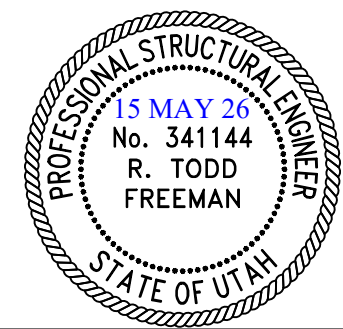
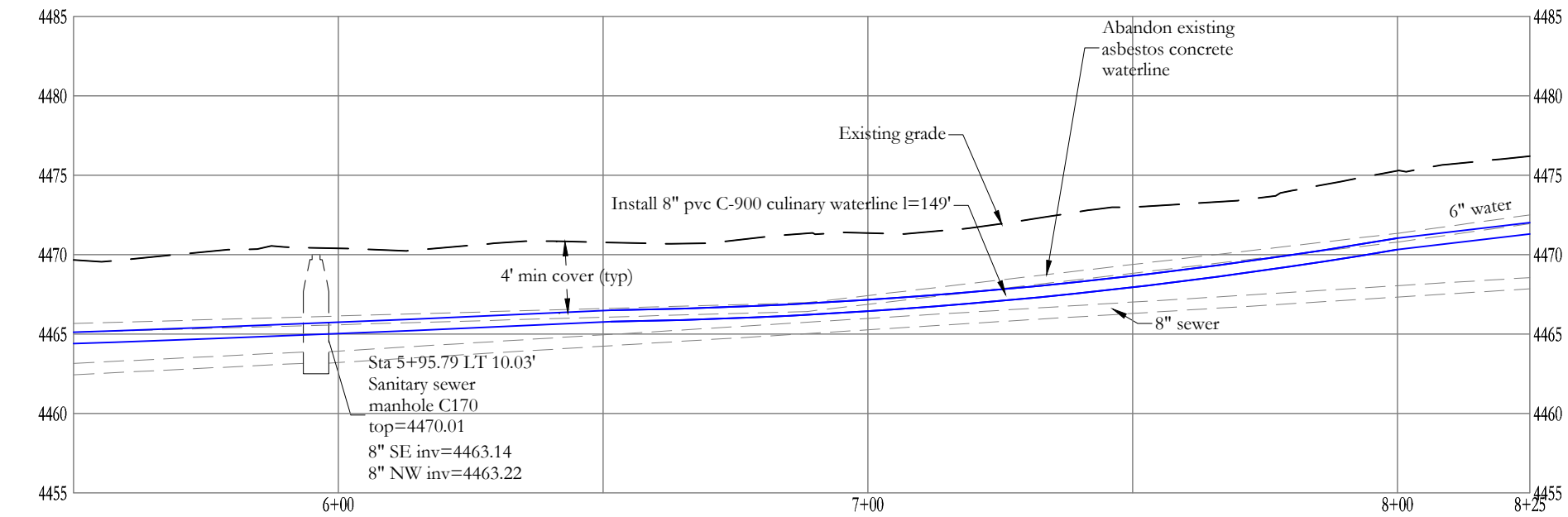
No HAFB mag marker stations on this sheet



CEC
 CIVIL ENGINEERING
 CONSULTANTS, PLLC.
 5141 SOUTH 1500 WEST
 RIVERDALE, UT 84405
 801.866.0550

NOTES:

- Contractor shall locate/pothole existing waterline to determine the best location for new 8" waterline.
- Maintain a minimum of 10' separation between waterline and sewer line (edge to edge).
- Reconnect all water service laterals to connect to new 8" waterline.
- All mechanical joint restraint (e.g. megalug) connections, flange fitting and all other fittings using connection bolts must be furnished and installed with bluebolts.
- All MJ connections to be restrained with restrained joints and thrust blocks. Wrap all fittings with plastic prior to pouring thrust blocks.
- Utilities shown are for information purposes only. The contractor shall pothole to verify utilities location as necessary.
- Waterline to be buried with 4' of cover (minimum).
- Protect all existing utilities (e.g. storm water, sanitary sewer, etc.).
- The contractor shall use equipment such that it will not damage the existing curb & gutter. Any curb & gutter damaged will be replaced at the Contractor's expense.
- Water service laterals to be 3/4", 1" & 2" CTS blue poly pipe (DR-9). Tracing wire (size and type per city specifications) shall be installed with the blue poly pipe.
- For all water valves being abandoned in place, remove the concrete collar, the top 1/2 of the sleeve and fill the remaining sleeve with concrete.
- HAFB Mag utility 4" pipe 3' depth from top of road, contractor to verify.
- Remove and replace HAFB Mag markers in pavement as needed.
- All numbered HAFB monitoring wells listed are active as of email from Julie McNeil at Air Force Civil Engineer Center date May 9th 2025.
- Existing pipe being abandoned shall be capped at all open ends in the ground.
- Contractor shall verify all sewer laterals being crossed with the trench as to not damage them.
- Contractor to be careful installing the stormwater pipe when crossing the 4" HAFB, the existing waterline and the sewer line.



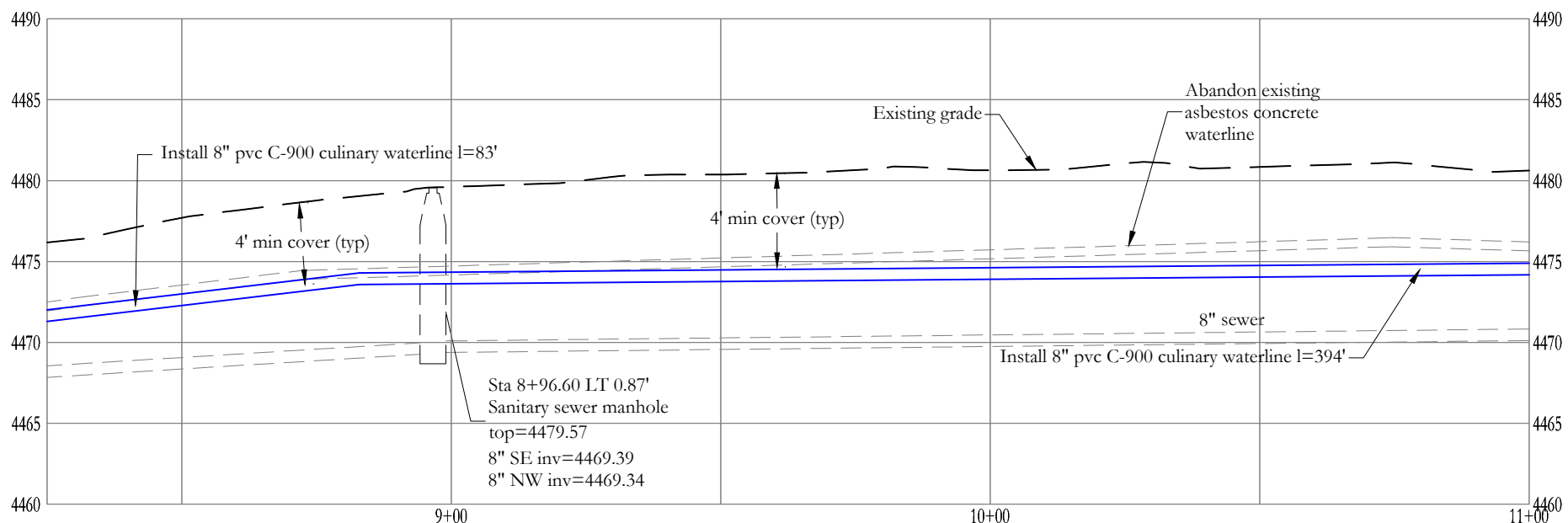
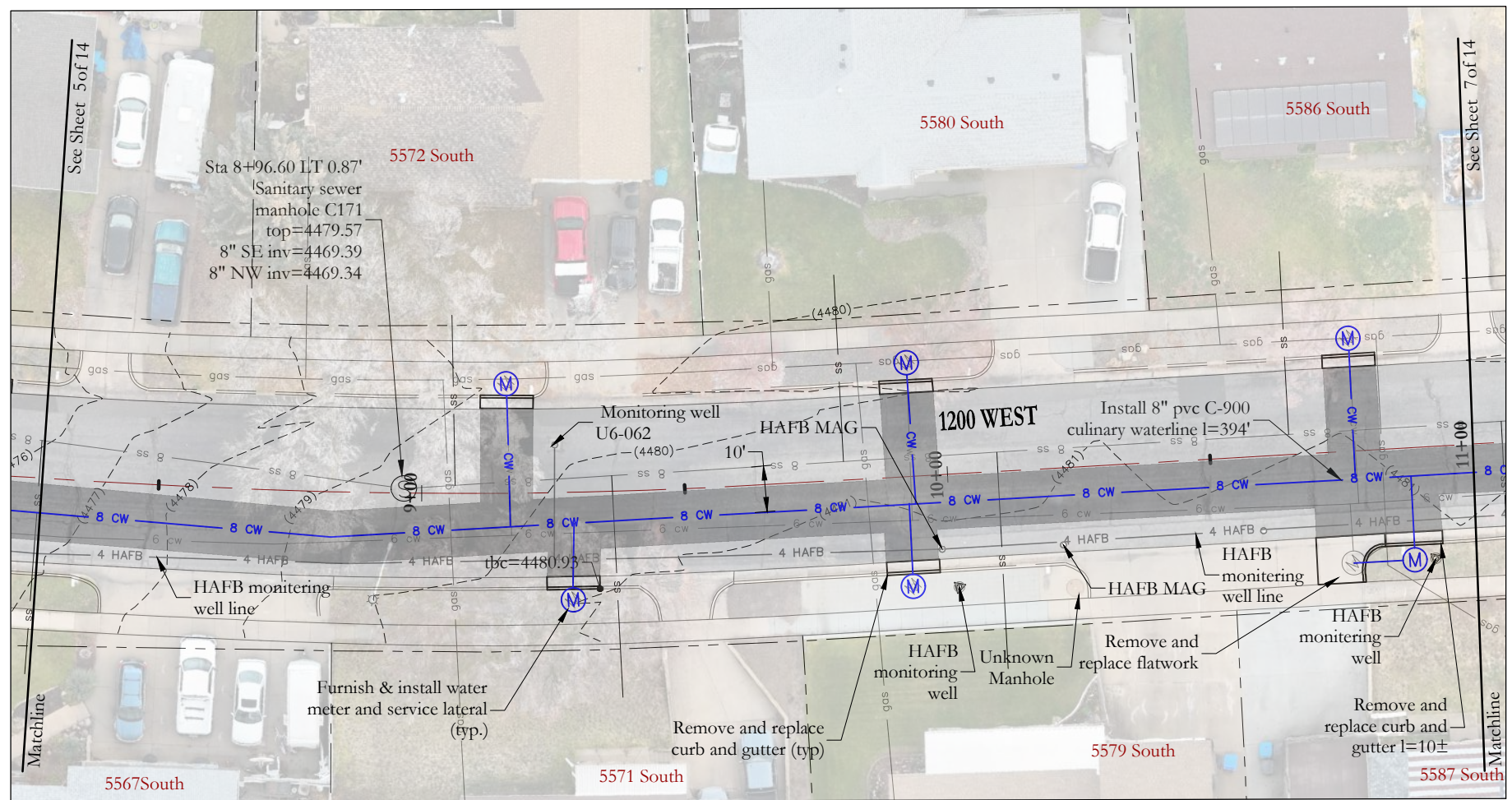
NO.	DATE	BY	REVISIONS

DATE: MAY 2026
 DRAWN: JEO/KSM
 CHECKED: RTF

PROJECT / LOCATION:
 1200 WEST WATERLINE FROM
 5450 SOUTH TO 5650 SOUTH (CUL-DE-SAC)
 RIVERDALE, UTAH
 TITLE:
 PLAN & PROFILE: STA 5+50 - 8+25

CLIENT: RIVERDALE CITY
 PROJECT NUMBER: RC.25005
 FILE: ~RC.25005 03 Site.dwg
 SHEET: 5 of 14

LOCATION: Z:\CEC Clients\Riverdale City\Projects\RC.25005 1200 West Waterline\~CADD C3D 2025\Plansheet\~Addendum 1\~CADD C3D 2025 DATE: 5/22/2026 9:04 AM

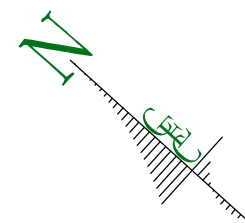


HAFB mag marker stations

- Sta 9+98.19 RT 14.12'
- Sta 10+21.21 RT 14.20'
- Sta 11+36.18 RT 13.83'
- Sta 12+14.65 RT 12.75'
- Sta 12+20.48 RT 9.59'
- Sta 12+26.09 RT 13.90'
- Sta 13+01.00 RT 14.17'
- Sta 13+75.33 RT 13.67'
- Sta 14+48.85 RT 11.67'
- Sta 15+65.42 RT 0.17'
- Sta 15+69.62 LT 4.00'
- Sta 15+70.77 LT 2.02'

NOTES:

1. Contractor shall locate/pothole existing waterline to determine the best location for new 8" waterline.
2. Maintain a minimum of 10' separation between waterline and sewer line (edge to edge).
3. Reconnect all water service laterals to connect to new 8" waterline.
4. All mechanical joint restraint (e.g. megalug) connections, flange fitting and all other fittings using connection bolts must be furnished and installed with bluebolts.
5. All MJ connections to be restrained with restrained joints and thrust blocks. Wrap all fittings with plastic prior to pouring thrust blocks.
6. Utilities shown are for information purposes only. The contractor shall pothole to verify utilities location as necessary.
7. Waterline to be buried with 4' of cover (minimum).
8. Protect all existing utilities (e.g. storm water, sanitary sewer, etc.).
9. The contractor shall use equipment such that it will not damage the existing curb & gutter. Any curb & gutter damaged will be replaced at the Contractor's expense.
10. Water service laterals to be 3/4", 1" & 2" CTS blue poly pipe (DR-9). Tracing wire (size and type per city specifications) shall be installed with the blue poly pipe.
11. For all water valves being abandoned in place, remove the concrete collar, the top 1/2 of the sleeve and fill the remaining sleeve with concrete.
12. HAFB Mag utility 4" pipe 3' depth from top of road, contractor to verify.
13. Remove and replace HAFB Mag markers in pavement as needed.
14. All numbered HAFB monitoring wells listed are active as of email from Julie McNeil at Air Force Civil Engineer Center date May 9th 2025.
15. Existing pipe being abandoned shall be capped at all open ends in the ground.
16. Contractor shall verify all sewer laterals being crossed with the trench as to not damage them.
17. Contractor to be careful installing the stormwater pipe when crossing the 4" HAFB, the existing waterline and the sewer line.



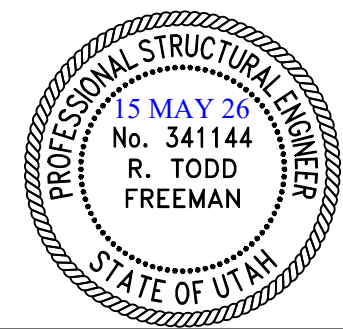
CEC
 CIVIL ENGINEERING
 CONSULTANTS, PLLC.
 5141 SOUTH 1500 WEST
 RIVERDALE, UT 84405
 801.866.0550

NO.	DATE	BY	REVISIONS

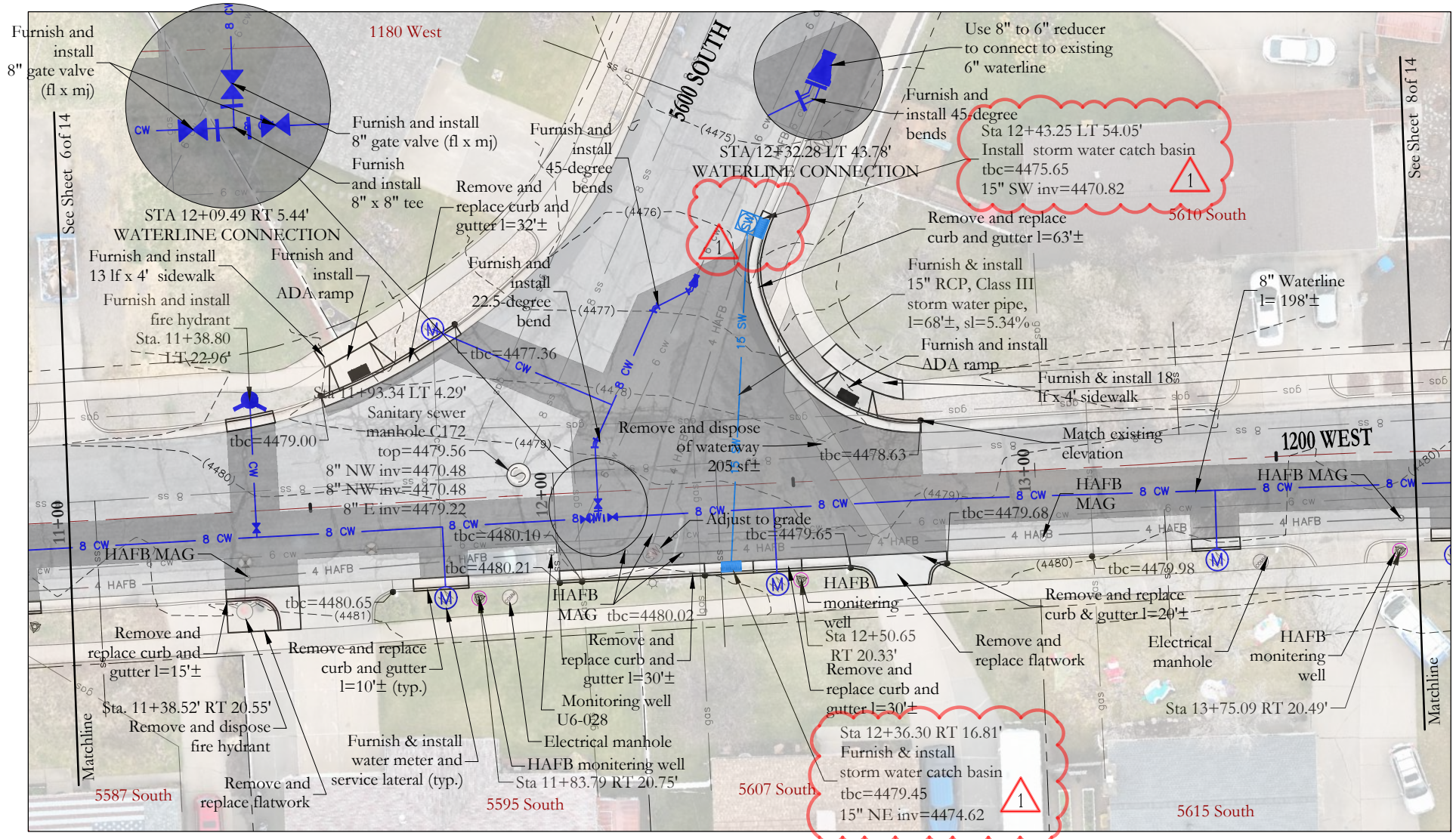
DATE: MAY 2026
 DRAWN: JEO/KSM
 CHECKED: RTF

PROJECT / LOCATION:
 1200 WEST WATERLINE FROM
 5450 SOUTH TO 5650 SOUTH (CUL-DE-SAC)
 RIVERDALE, UTAH
 TITLE:
 PLAN & PROFILE: STA 8+25 - 11+00

CLIENT: RIVERDALE CITY
 PROJECT NUMBER: RC.25005
 FILE: ~RC.25005 03 Site.dwg
 SHEET: 6 of 14



LOCATION: Z:\CEC Clients\Riverdale City\Projects\RC.25005 1200 West Waterline\~CADD C3D 2025\Planset\~Addendum 1\~CADD C3D 2025 DATE: 5/22/2026 9:04 AM

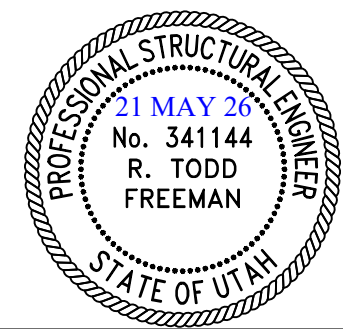
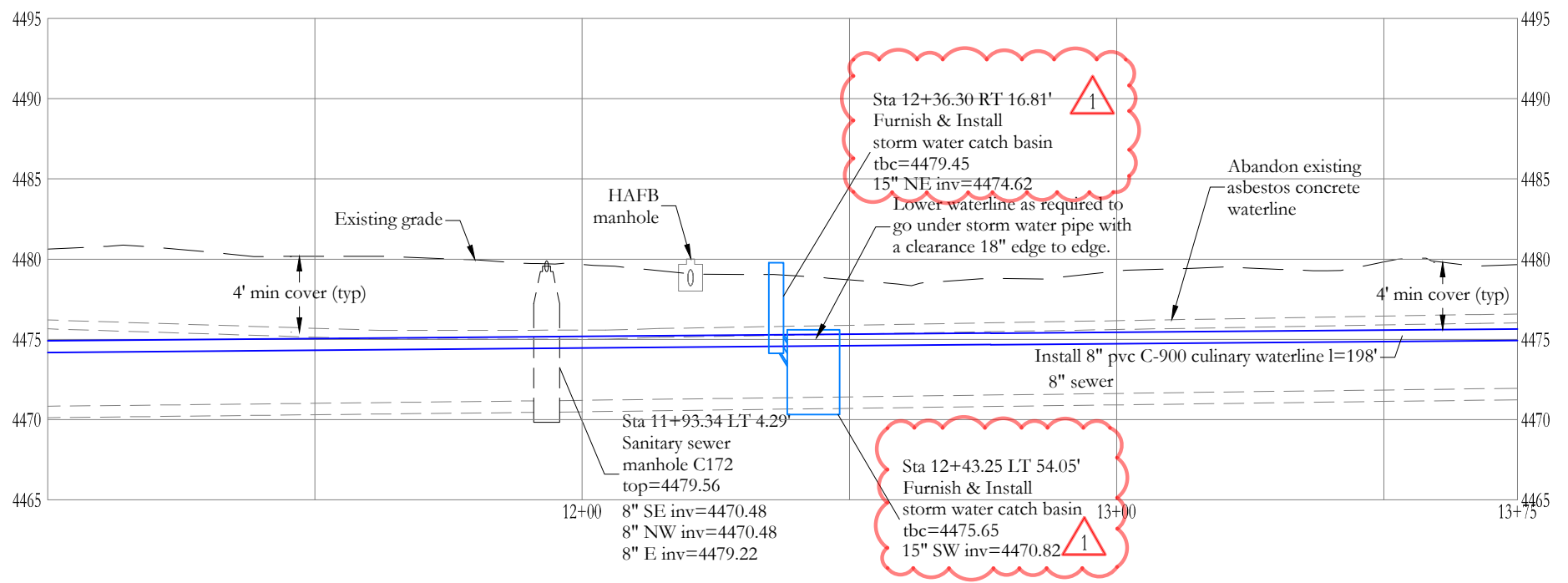
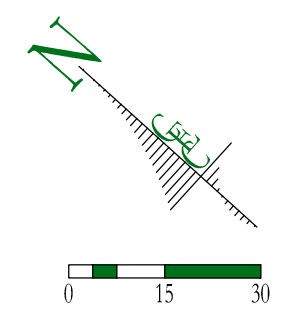


HAFB mag marker stations

- Sta 9+98.19 RT 14.12'
- Sta 10+21.21 RT 14.20'
- Sta 11+36.18 RT 13.83'
- Sta 12+14.65 RT 12.75'
- Sta 12+20.48 RT 9.59'
- Sta 12+26.09 RT 13.90'
- Sta 13+01.00 RT 14.17'
- Sta 13+75.33 RT 13.67'
- Sta 14+48.85 RT 11.67'
- Sta 15+65.42 RT 0.17'
- Sta 15+69.62 LT 4.00'
- Sta 15+70.77 LT 2.02'

NOTES:

1. Contractor shall locate/pothole existing waterline to determine the best location for new 8" waterline.
2. Maintain a minimum of 10' separation between waterline and sewer line (edge to edge).
3. Reconnect all water service laterals to connect to new 8" waterline.
4. All mechanical joint restraint (e.g. megalug) connections, flange fitting and all other fittings using connection bolts must be furnished and installed with bluebolts.
5. All MJ connections to be restrained with restrained joints and thrust blocks. Wrap all fittings with plastic prior to pouring thrust blocks.
6. Utilities shown are for information purposes only. The contractor shall pothole to verify utilities location as necessary.
7. Waterline to be buried with 4' of cover (minimum).
8. Protect all existing utilities (e.g. storm water, sanitary sewer, etc.).
9. The contractor shall use equipment such that it will not damage the existing curb & gutter. Any curb & gutter damaged will be replaced at the Contractor's expense.
10. Water service laterals to be 3/4", 1" & 2" CTS blue poly pipe (DR-9). Tracing wire (size and type per city specifications) shall be installed with the blue poly pipe.
11. For all water valves being abandoned in place, remove the concrete collar, the top 1/2 of the sleeve and fill the remaining sleeve with concrete.
12. HAFB Mag utility 4" pipe 3' depth from top of road, contractor to verify.
13. Remove and replace HAFB Mag markers in pavement as needed.
14. All numbered HAFB monitoring wells listed are active as of email from Julie McNeil at Air Force Civil Engineer Center date May 9th 2025.
15. Existing pipe being abandoned shall be capped at all open ends in the ground.
16. Contractor shall verify all sewer laterals being crossed with the trench as to not damage them.
17. Contractor to be careful installing the stormwater pipe when crossing the 4" HAFB, the existing waterline and the sewer line.



CEC
 CIVIL ENGINEERING CONSULTANTS, PLLC.
 5141 SOUTH 1500 WEST
 RIVERDALE, UT 84405
 801.866.0550

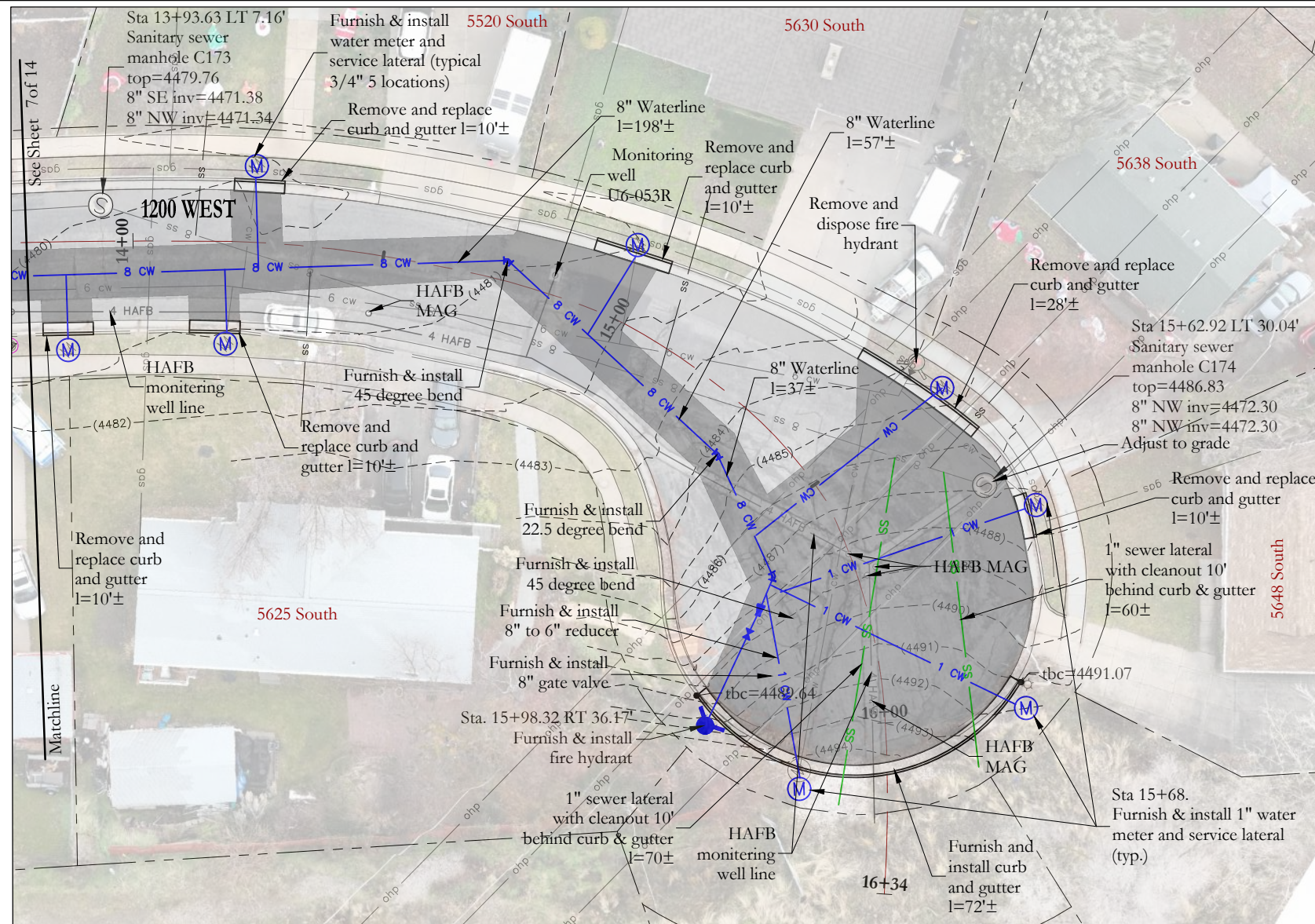
NO.	DATE	BY	REVISIONS
1	5/21/26	RTF	change catch basins to combination boxes

DATE: MAY 2026
 DRAWN: JEO/KSM
 CHECKED: RTF

PROJECT / LOCATION:
 1200 WEST WATERLINE FROM
 5450 SOUTH TO 5650 SOUTH (CUL-DE-SAC)
 RIVERDALE, UTAH
 TITLE:
 PLAN & PROFILE: STA 11+00 - 13+75

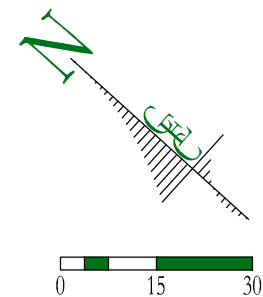
CLIENT: RIVERDALE CITY
 PROJECT NUMBER: RC.25005
 FILE: ~RC.25005 03 Site.dwg
 SHEET: 7 of 14

LOCATION: Z:\CEC Clients\Riverdale City\Projects\RC.25005 1200 West Waterline\~CADD C3D 2025\Plans\~Addendum 1\~CADD C3D 2025 DATE: 5/22/2026 9:04 AM



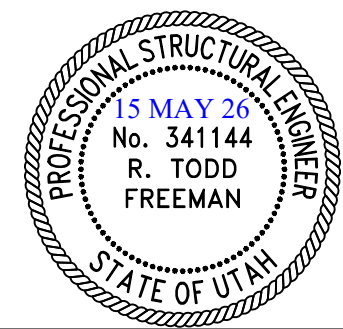
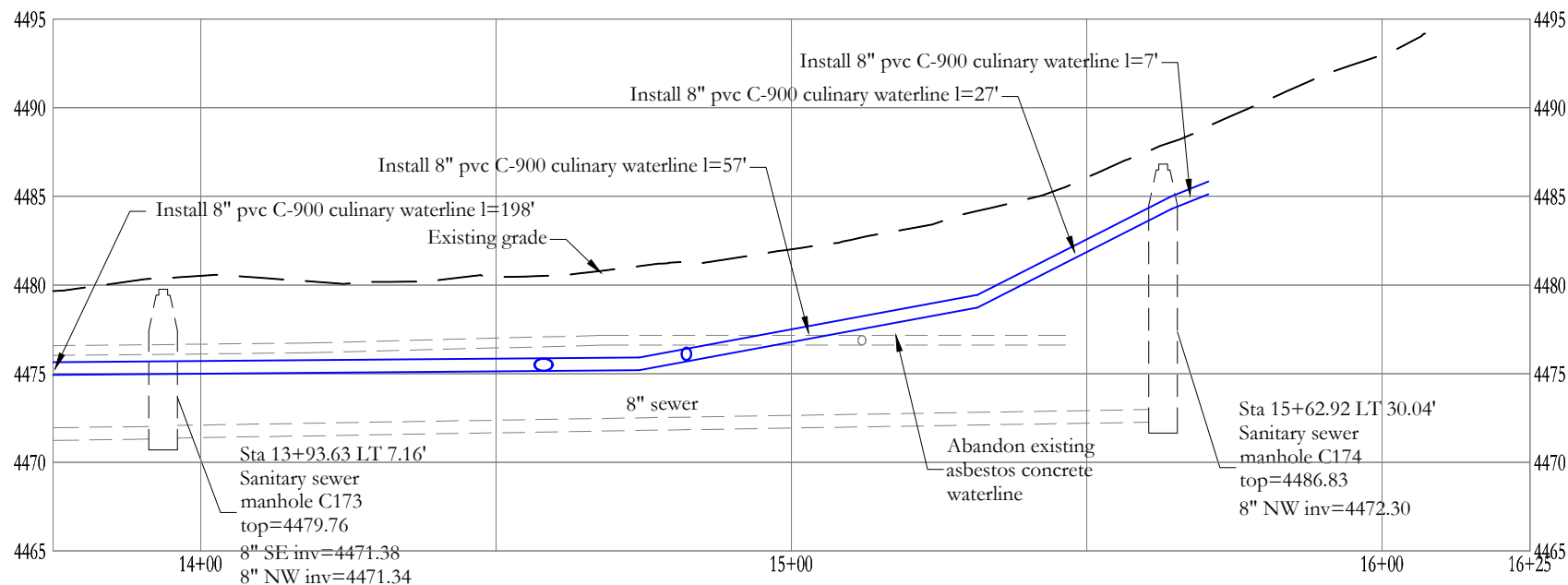
HAFB mag marker stations

- Sta 9+98.19 RT 14.12'
- Sta 10+21.21 RT 14.20'
- Sta 11+36.18 RT 13.83'
- Sta 12+14.65 RT 12.75'
- Sta 12+20.48 RT 9.59'
- Sta 12+26.09 RT 13.90'
- Sta 13+01.00 RT 14.17'
- Sta 13+75.33 RT 13.67'
- Sta 14+48.85 RT 11.67'
- Sta 15+65.42 RT 0.17'
- Sta 15+69.62 LT 4.00'
- Sta 15+70.77 LT 2.02'



NOTES:

1. Contractor shall locate/pothole existing waterline to determine the best location for new 8" waterline.
2. Maintain a minimum of 10' separation between waterline and sewer line (edge to edge).
3. Reconnect all water service laterals to connect to new 8" waterline.
4. All mechanical joint restraint (e.g. megalug) connections, flange fitting and all other fittings using connection bolts must be furnished and installed with bluebolts.
5. All MJ connections to be restrained with restrained joints and thrust blocks. Wrap all fittings with plastic prior to pouring thrust blocks.
6. Utilities shown are for information purposes only. The contractor shall pothole to verify utilities location as necessary.
7. Waterline to be buried with 4' of cover (minimum).
8. Protect all existing utilities (e.g. storm water, sanitary sewer, etc.).
9. The contractor shall use equipment such that it will not damage the existing curb & gutter. Any curb & gutter damaged will be replaced at the Contractor's expense.
10. Water service laterals to be 3/4", 1" & 2" CTS blue poly pipe (DR-9). Tracing wire (size and type per city specifications) shall be installed with the blue poly pipe.
11. For all water valves being abandoned in place, remove the concrete collar, the top 1/2 of the sleeve and fill the remaining sleeve with concrete.
12. HAFB Mag utility 4" pipe 3' depth from top of road, contractor to verify.
13. Remove and replace HAFB Mag markers in pavement as needed.
14. All numbered HAFB monitoring wells listed are active as of email from Julie McNeil at Air Force Civil Engineer Center date May 9th 2025.
15. Existing pipe being abandoned shall be capped at all open ends in the ground.
16. Contractor shall verify all sewer laterals being crossed with the trench as to not damage them.
17. Contractor to be careful installing the stormwater pipe when crossing the 4" HAFB, the existing waterline and the sewer line.



CEC
 CIVIL ENGINEERING
 CONSULTANTS, PLLC.
 5141 SOUTH 1500 WEST
 RIVERDALE, UT 84405
 801.866.0550

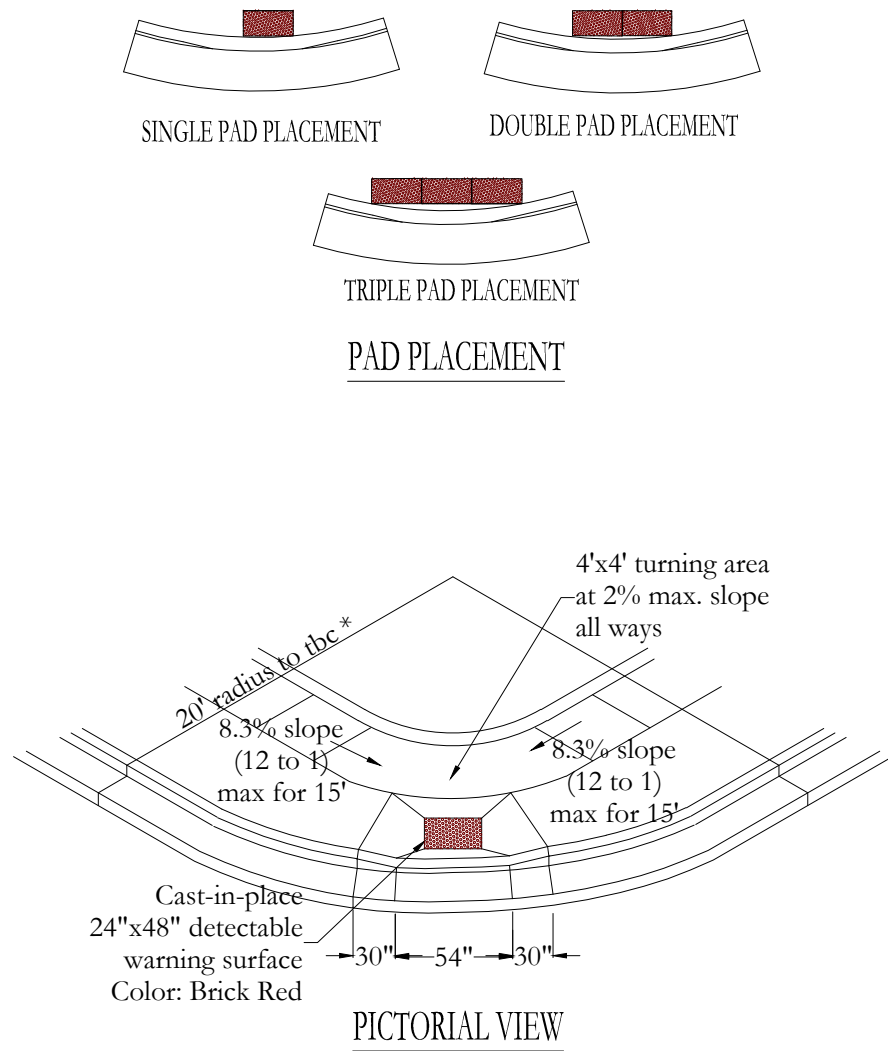
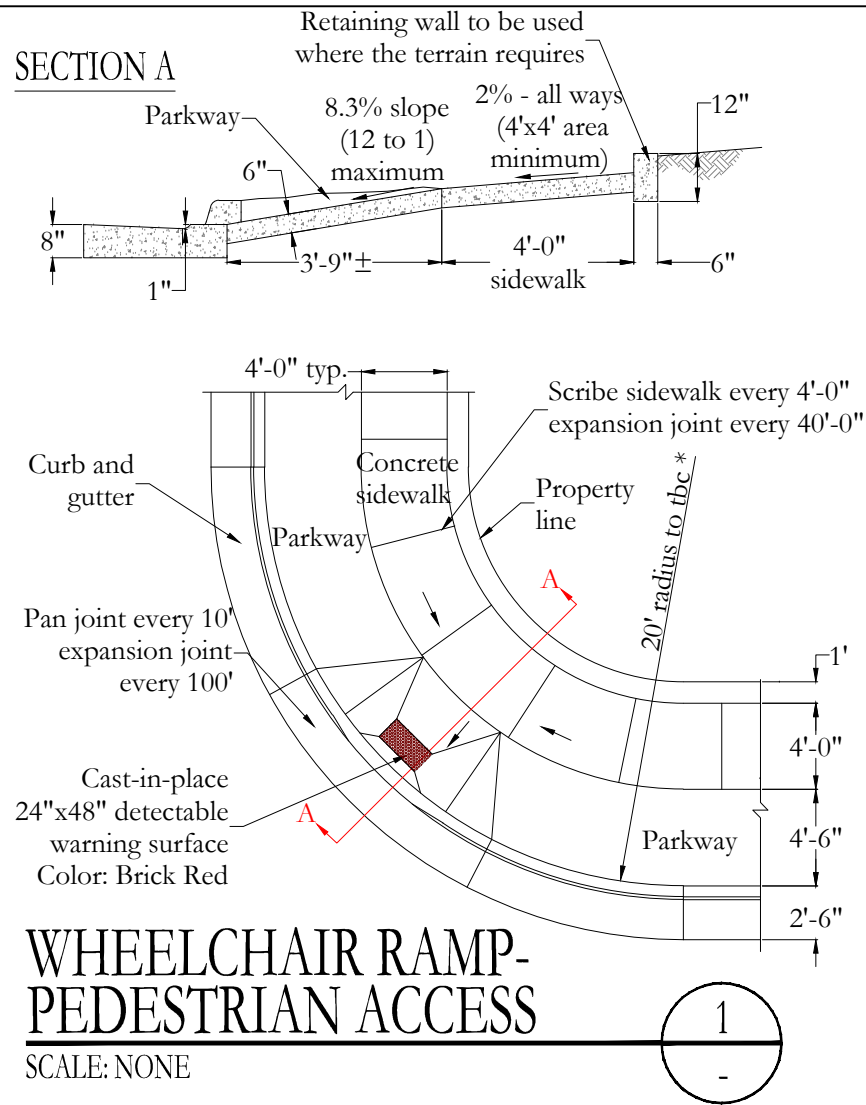
NO.	DATE	BY	REVISIONS

DATE: MAY 2026
 DRAWN: JEO/KSM
 CHECKED: RTF

PROJECT / LOCATION:
 1200 WEST WATERLINE FROM
 5450 SOUTH TO 5650 SOUTH (CUL-DE-SAC)
 RIVERDALE, UTAH
 TITLE:
 PLAN & PROFILE: STA 13+75 - 16+25

CLIENT: RIVERDALE CITY
 PROJECT NUMBER: RC.25005
 FILE: ~RC.25005 03 Site.dwg
 SHEET: 8 of 14

LOCATION: Z:\CEC Clients\Riverdale City\Projects\RC.25005 1200 West Waterline\~CADD C3D 2025\Plans\~Addendum 1\~CADD C3D 2025 DATE: 5/22/2026 9:05 AM



NOTES:

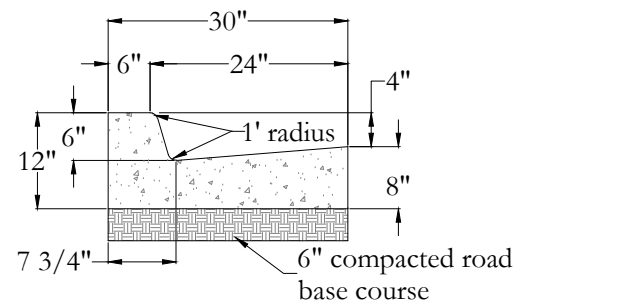
1. A minimum 6" depth of roadbase material or crushed gravel shall be placed to grade and compacted under handicap ramps to 95% of maximum dry density prior to placement of concrete.
2. Locate all inlet grates 2' minimum away from the pedestrian crosswalk, with all drainage intercepted before storm water crosses the crosswalk area.
3. Slopes shown are maximum slopes.
4. Expansion joints shall be constructed by placing an approved material, (typically bituminous impregnated fiberboard), the full depth of the concrete. Expansion material shall be set 1/4" below the finish level of sidewalk ramp. Expansion material shall be installed prior to the placement of concrete. **Concrete shall not be installed below the expansion joint.**
5. When a city roadway intersects with a UDOT road, a 35' minimum radius (or other) will be required as per UDOT requirement.
6. Detectable warning surface materials & installation must conform to "ADA cast-in-place tactile warning panels" requirements & specifications.
7. Detectable warning panels by "ADA Solutions, Inc.", color to be specified by City (other products to be approved by City prior to installation).
8. This detail is for new construction of wheelchair ramps. When modifying any existing ramps, contact Riverdale City Public Works Inspector for engineering and modification.

CIVIL ENGINEERING CONSULTANTS, PLLC.
 5141 SOUTH 1500 WEST
 RIVERDALE, UT 84405
 801.866.0550

NO.	DATE	BY	REVISIONS

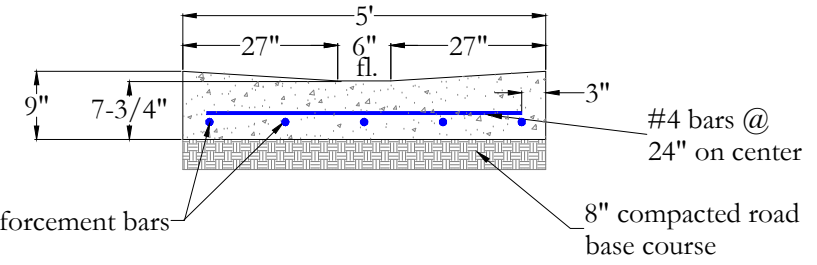
DATE: MAY 2026
 DRAWN: JEO/KSM
 CHECKED: RTF

PROJECT / LOCATION:
 1200 WEST WATERLINE FROM
 5450 SOUTH TO 5650 SOUTH (CUL-DE-SAC)
 RIVERDALE, UTAH
 TITLE:
 DETAILS



NOTE:
 Contractor to provide expansion joints at a spacing not to exceed 100 feet and where new concrete materials abut existing ramps, curb and gutter, and other concrete, or as directed by the Engineer.

STANDARD 30" CURB & GUTTER
 SCALE: NONE

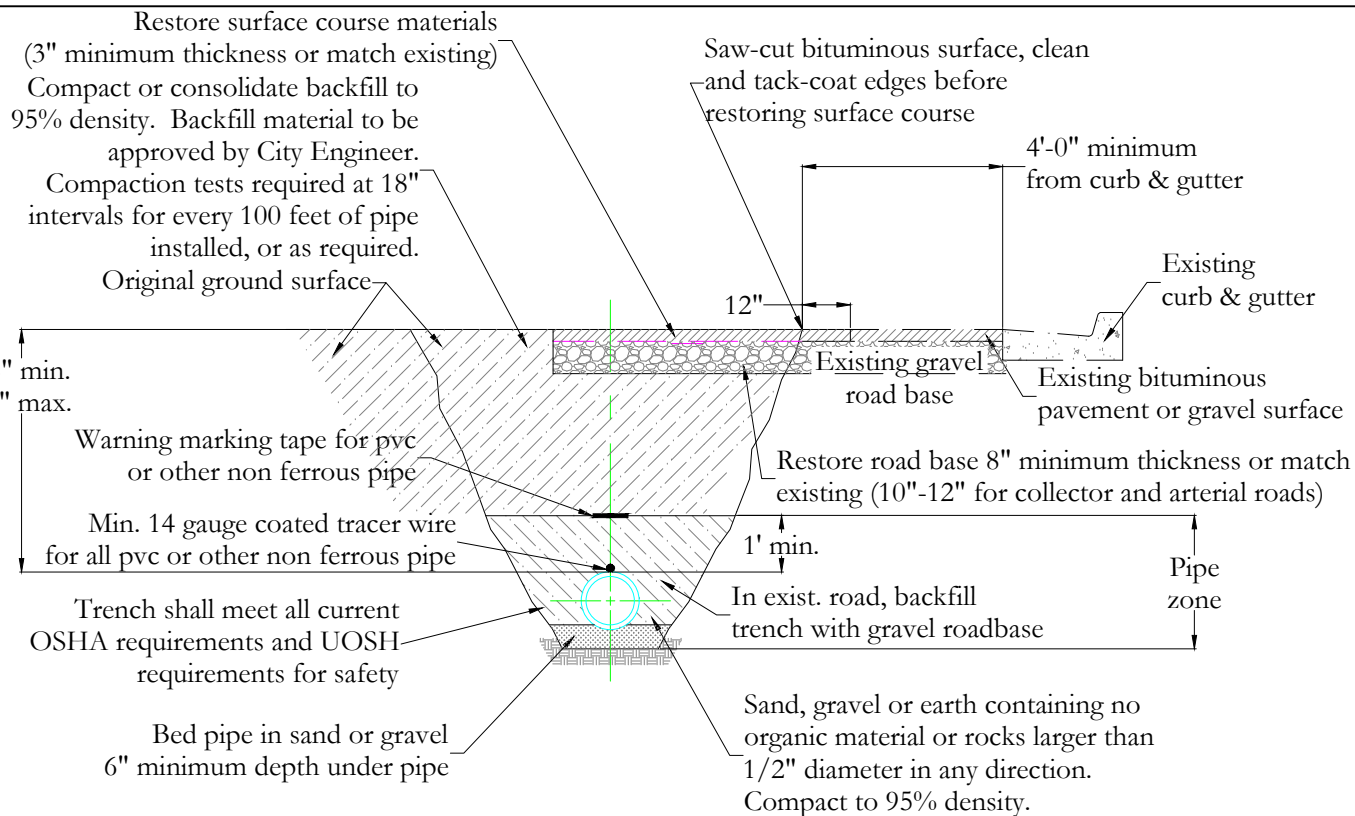


STANDARD 5' WIDE WATERWAY
 SCALE: NONE

PROFESSIONAL STRUCTURAL ENGINEER
 15 MAY 26
 No. 341144
 R. TODD FREEMAN
 STATE OF UTAH

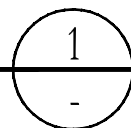
CLIENT: RIVERDALE CITY
 PROJECT NUMBER: RC.25005
 FILE: ~RC.25005 07 Details.dwg
 SHEET: 9 of 14

LOCATION: Z:\CEC Clients\Riverdale City\Projects\RC.25005 1200 West Waterline\~CADD C3D 2025\Plans\~Addendum 1\~CADD C3D 2025 DATE: 5/22/2026 9:05 AM



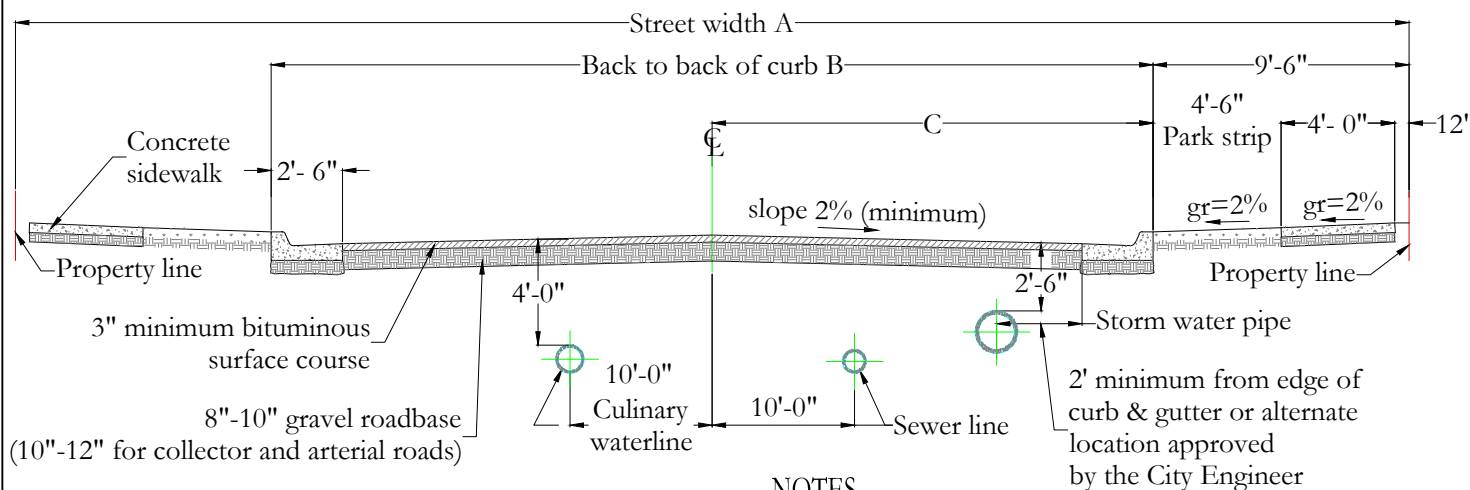
CULINARY WATER TRENCH CROSS-SECTION

SCALE: NONE



WATERLINE PIPING AND MISCELLANEOUS NOTES:

1. Water lines 12 inches and larger shall be ductile iron class-51. Water lines 10 inches and smaller shall be pvc C-900 DR-18 or ductile iron Class-51. All waterlines shall be a minimum of 8-inches in diameter.
2. Valves larger than 12-inches shall be butterfly valves. Concrete collars required around all valve boxes.
3. Ductile iron pipe and fittings shall be wrapped with polyethylene and have cathodic protection where required.
4. Whenever possible "hot tap" connections required. Hot tap valve to be supported during connection. Contractor to notify City 24-hours in advance of making connection.
5. Contractor shall contact property owners 48-hours in advance with written notice for shutting off water
6. Pipe zone shall be backfilled with sand or material as approved by project engineer.
7. The following tests must be passed before the waterline is connected for service. All disinfection and testing shall follow all AWWA specifications and standards (see the Technical Specification discharge of waste water).
 - a. Pipeline inspection - alignment, grade, class of pipe, & brass wedges installation
 - b. Pressure Test - Must keep a minimum of 200 PSI for 2-hours
 - c. Chlorination Test - Must keep a minimum of 30 PPM for 24-hours.
 - d. Clear Water Test
 - e. Bacteria Test - 2 tests are required. The 2nd test must be taken 24-hours after the 1st test is performed. (See Technical Specifications for additional detail information)
8. Upon completion of a new waterline a sampling tap valve shall be installed on the blow-off pipe at the ends of the pipe to aid with the water sampling and tests that are required in Item 9 above.
9. Terminations for tracer wire for pvc piping is to be located at the surface of valve boxes. The wire is to be brought on the outside of the bottom section of the water valve box and brought inside through the top section of the box. Tracer wire shall be extended to the ground surface adjacent fire hydrants
10. A fire hydrant (for pipeline flushing) shall be installed at the end of all cul-de-sac's & dead-end streets.
11. All mechanical joint restraint (e.g. megalug) connections, flange fittings and all other fittings using connection bolts must be furnished and installed with bluebolts.

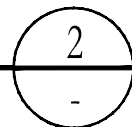


NOTES

1. Maximum difference in elevation between curb on opposite side of street shall not exceed 1'-0".
2. Pavement thickness shall be considered as minimum and may be increased by the Engineer when the subgrade c.b.r. is less than 10 or when a greater depth is necessary to provide sufficient stability.
3. All roadbase shall meet UDOT standards and specifications. Recycled concrete will NOT be permitted to use as a roadbase substitute.

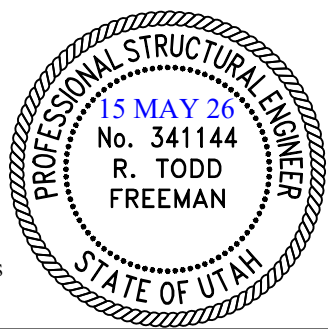
STANDARD URBAN ROADWAY SECTION

SCALE: NONE



Street designation	R.O.W. WIDTH A	T.B.C. TO T.B.C. B	CL TO T.B.C. C
Minor	50'	31'	15.5'
Standard Residential	60'	41'	20.5'
Collector	66'	47'	23.5'
Minor Arterial	80'	61'	31.5'
Major Arterial	100'	81'	40.5'

4. Minor and major arterial streets shall be constructed with a 10" untreated base course and 3" bituminous surface course or as required.
5. Minimum storm water pipe size is 15" diameter.
6. Minimum water line size is 8" diameter.
7. Minimum sanitary sewer line size is 8" diameter.
8. Chip Seal Coat materials shall not be placed in a cul-de-sac. Substitute with Polymer Seal Coat materials (High density mineral bonds, Mastics, Onyx, HA5, Micro-surfacing, Slurry seals & others as approved).



CEC
 CIVIL ENGINEERING CONSULTANTS, PLLC.
 5141 SOUTH 1500 WEST
 RIVERDALE, UT 84405
 801.866.0550

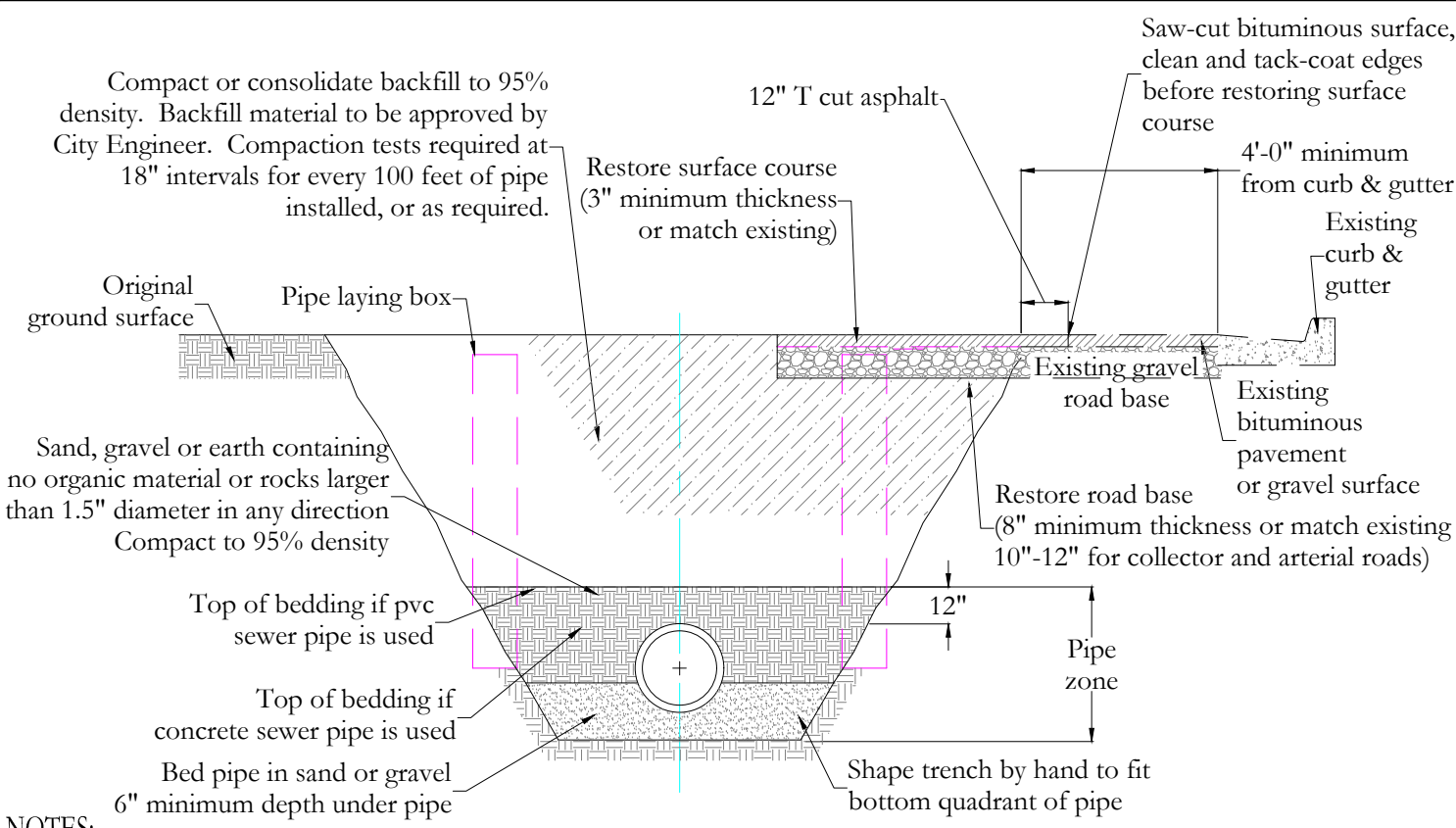
NO.	DATE	BY	REVISIONS

DATE: MAY 2026
 DRAWN: JEO/KSM
 CHECKED: RTF

PROJECT / LOCATION:
 1200 WEST WATERLINE FROM
 5450 SOUTH TO 5650 SOUTH (CUL-DE-SAC)
 RIVERDALE, UTAH
 TITLE: DETAILS

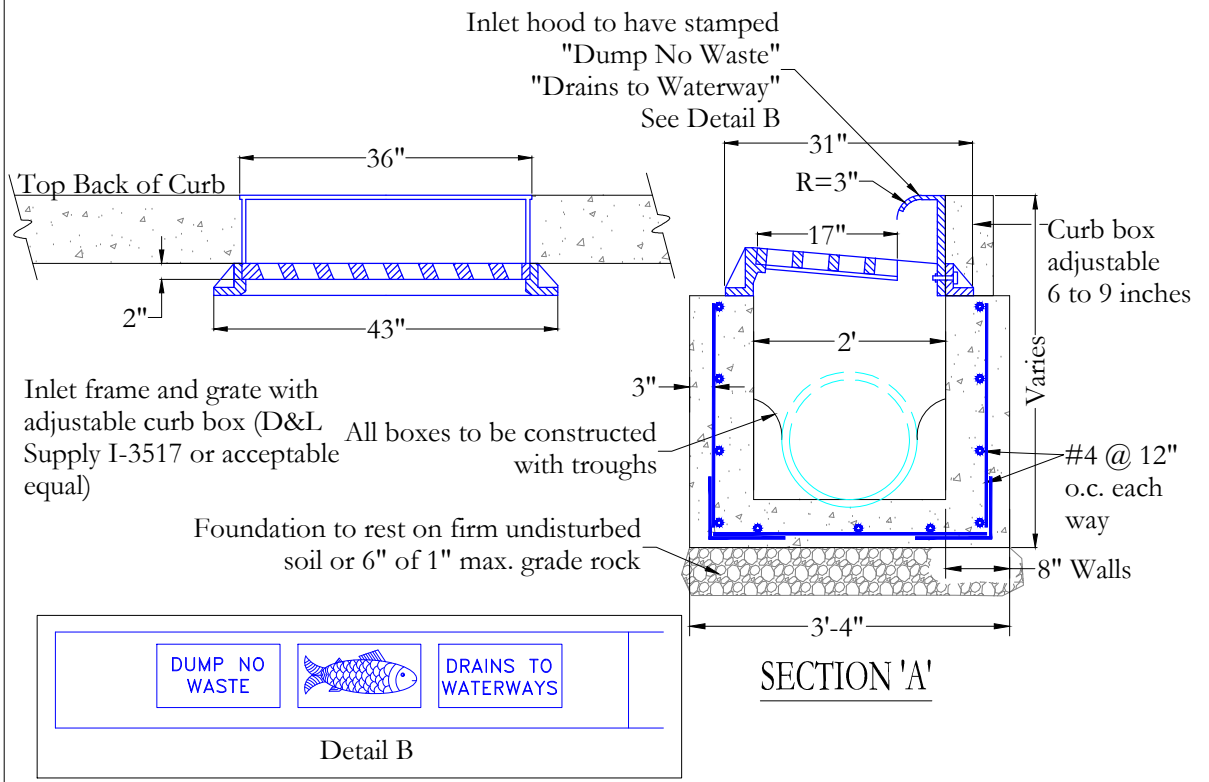
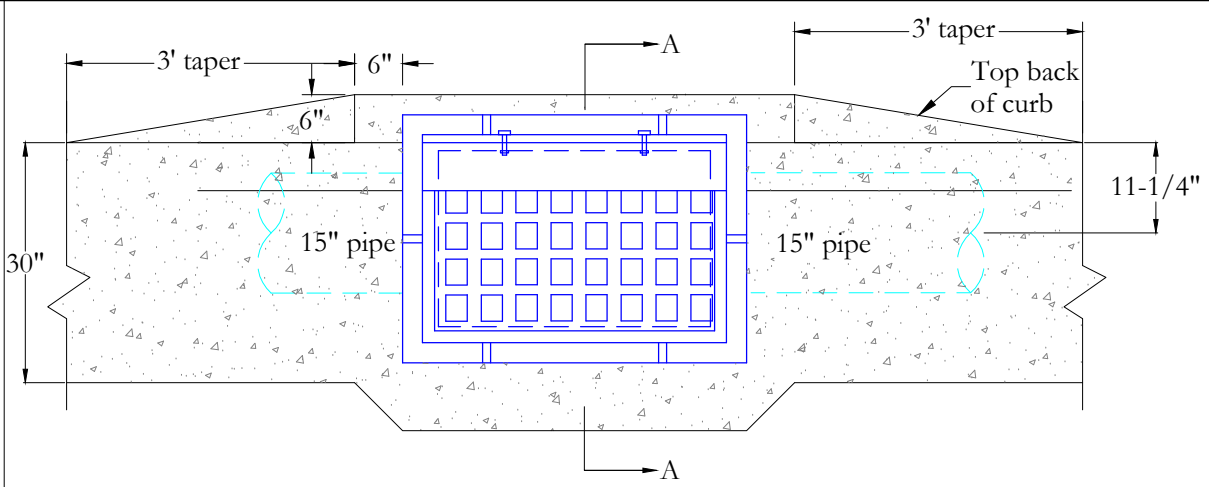
CLIENT: RIVERDALE CITY
 PROJECT NUMBER: RC.25005
 FILE: ~RC.25005 07 Details.dwg
 SHEET: 10 of 14

LOCATION: Z:\CEC Clients\Riverdale City\Projects\RC.25005 1200 West Waterline\CADD C3D 2025\Planset\Addendum 1\CADD C3D 2025 DATE: 5/22/2026 9:05 AM



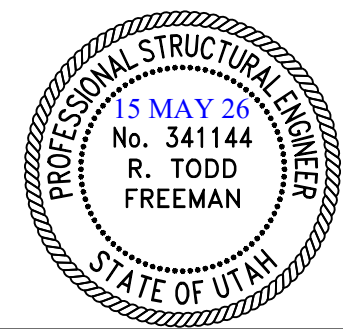
- NOTES:**
1. The contractor shall be responsible for meeting all current OSHA and UOSH requirements for trench safety.
 2. Contractor shall locate all underground utilities before laying pipe within 200' of said utilities which may be exposed, damaged or crossed as shown on the drawings or as "blue staked" the contractor will make arrangements with the utility company to move the utility if necessary or obtain permission from the project engineer to modify grade of pipeline in order to go around utilities.
 3. All storm water pipes to be installed in roadway or under curb and gutter with approval by the City Engineer.
 4. Minimum pipe size for storm water pipe is 15" diameter and must be concrete.
 5. Minimum depth of storm water pipe shall be 24" cover over top of pipe bell for standard backfill material, or as approved by City Engineer.
 6. For all new construction, a storm water/oil/grit/debris separator is required. Sizing of the separation unit to be determined by the Design Engineer and stamped Engineering Calculations must be submitted for review.
 7. Upon completion of the project storm drainage system the installed pipe, manholes, junction boxes, inlet boxes and all storm water facilities must be cleaned in the presence of the Public Works Storm Water Manager. A video of the completed work is required upon completion of cleaning and should be given to Riverdale City.
 8. All Storm Water pipelines shall be air & displacement tested along with a video recording of the pipelines interior, per the requirements of "Section 6, Paragraph G" of the "Technical Specifications".
 9. All Storm Water pipelines shall be re-video recorded/taped for displacement failures just prior to the expiration of the 1-year warrantee period. Should the pipeline be displaced horizontally or vertically the Public Works Director and/or the City Engineer shall determine the extent of the required repairs. It shall be the Contractors full responsibility to immediately make all required repairs and all costs associated with the repairs shall be paid by the Contractor.
 10. All abandoned lines 6" and larger are to be flow filled with lean concrete. Manhole to be removed shall be removed to within the 24" above the abandoned pipe.

**STORM WATER
TRENCH CROSS-SECTION** 1
SCALE: NONE



- NOTES:**
1. All storm water catch basins installed shall be cast-in-place. Any pre-cast boxes must be approved by Riverdale City prior to construction.
 2. All reinforcement shall be #4 deformed steel, grade 60.
 3. All reinforcement shall be placed at 12" o.c. each way in the floor and the walls.
 4. The adjustable curb box inlet grate shall be bicycle safe. D&L Supply I-3517 or acceptable equal.
 5. All pipes in the box shall be cut with the interior of the box and grouted smooth.
 6. Rebar shall have 3" clear on earth side of structure.

**HOODED
CATCH BASIN** 2
SCALE: NONE



CEC
CIVIL ENGINEERING
CONSULTANTS, PLLC.
5141 SOUTH 1500 WEST
RIVERDALE, UT 84405
801.866.0550

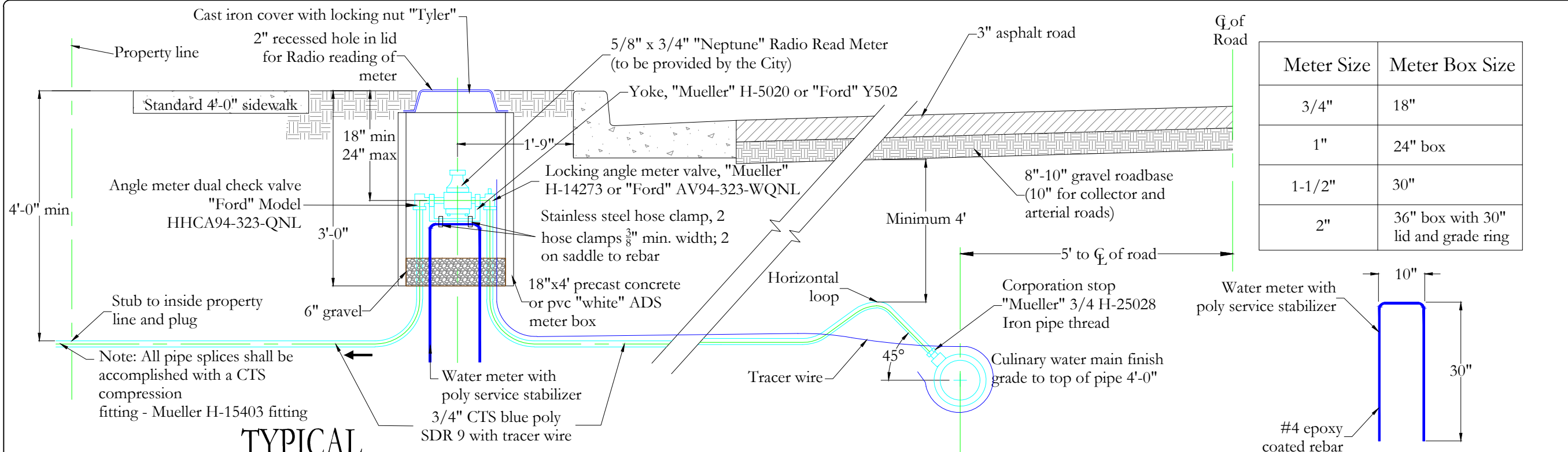
NO.	DATE	BY	REVISIONS

DATE: MAY 2026
DRAWN: JEO/KSM
CHECKED: RTF

PROJECT / LOCATION:
1200 WEST WATERLINE FROM
5450 SOUTH TO 5650 SOUTH (CUL-DE-SAC)
RIVERDALE, UTAH
TITLE: DETAILS

CLIENT: RIVERDALE CITY
PROJECT NUMBER: RC.25005
FILE: ~RC.25005 07 Details.dwg
SHEET: 11 of 14

LOCATION: Z:\CEC Clients\Riverdale City\Projects\RC.25005 1200 West Waterline\CADD C3D 2025\Planset\Addendum 1\CADD C3D 2025 DATE: 5/22/2026 9:05 AM



TYPICAL WATER CONNECTION

1
-

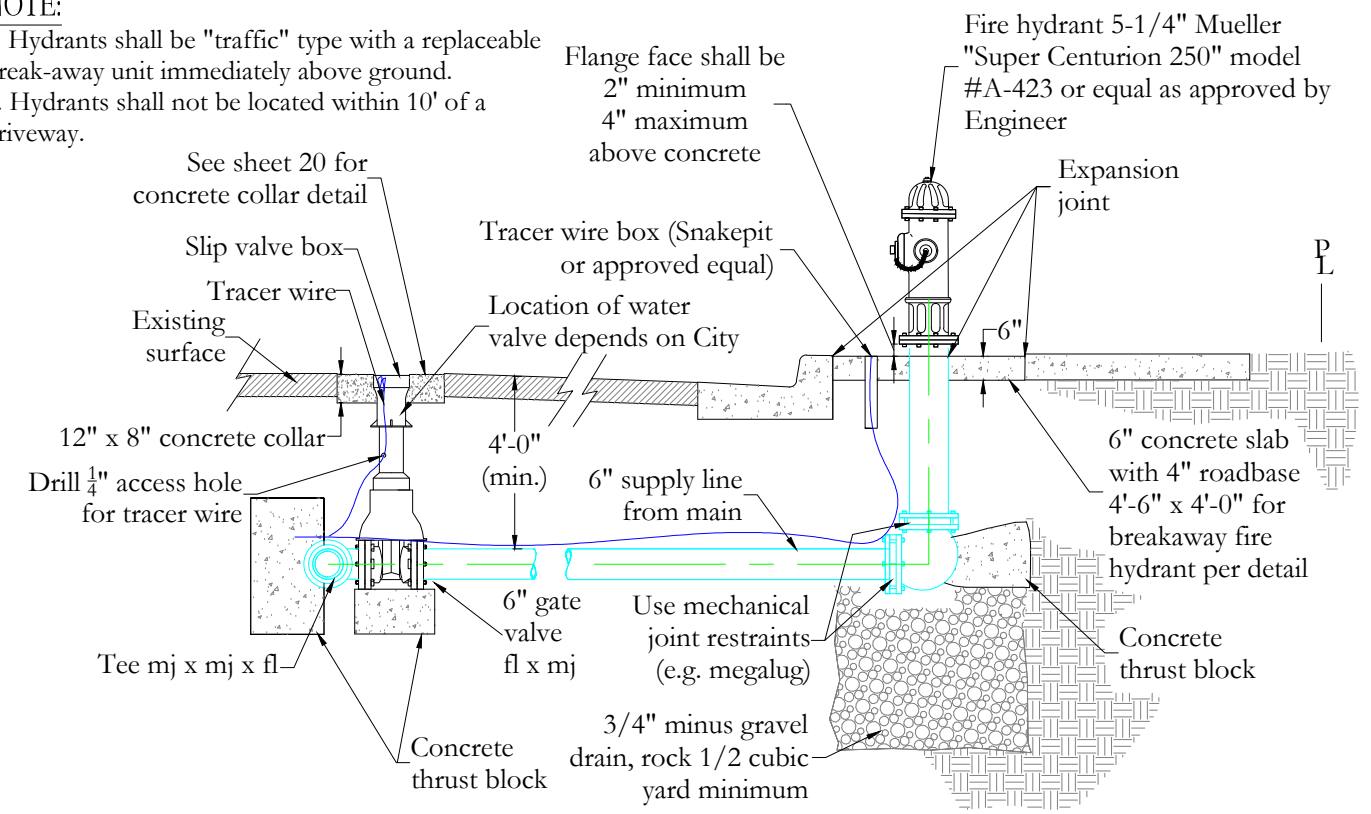
SCALE: NONE

NOTE:

- Hydrants shall be "traffic" type with a replaceable break-away unit immediately above ground.
- Hydrants shall not be located within 10' of a driveway.

NOTES:

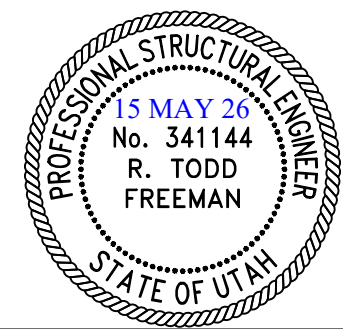
- Backfill: Install backfill in lifts not exceeding 8" after compaction. Compact each lift to an average dry density of 95% with no density test result less than 92%.
- Residential water meters provided by City. Commercial and industrial water meters to be approved by City.
- Pipe: 3/4" CTS blue poly SDR 9 with tracer wire.
- Placement: All meters are to be centered in the park strip and must be placed near midpoint of the lot. Meters must not be located in a driveway, or in a sidewalk, and must be 24" away from driveway approaches.
- Property owner is responsible for service line from property side of meter.
- Taps to PVC C900 require brass double strap saddle. Direct taps not allowed to PVC. Direct taps to ductile iron are allowed.
- Back flow prevention devices are required.
- 1-1/2" and 2" meters require a meter setter Mueller H1423 with Mueller H15428 fittings or approved equal.
- All meters over 1" are required to have a bypass.
- Water meter size shall be the same size as the supply line into site.
- Any standards and specifications not shown shall follow all APWA specifications.
- All mechanical joint restraint (e.g. megalug) connections, flange fittings and all other fittings using connection bolts must be furnished and installed with blue bolts.
- No splices are allowed on tracer wire; continuous from fire hydrant to fire hydrant; fire hydrant shall have one line in and one line out. Locating wire to be installed on poly service.



TYPICAL FIRE HYDRANT CONNECTION

2
-

SCALE: NONE



CEC
CIVIL ENGINEERING
CONSULTANTS, PLLC.
5141 SOUTH 1500 WEST
RIVERDALE, UT 84405
801.866.0550

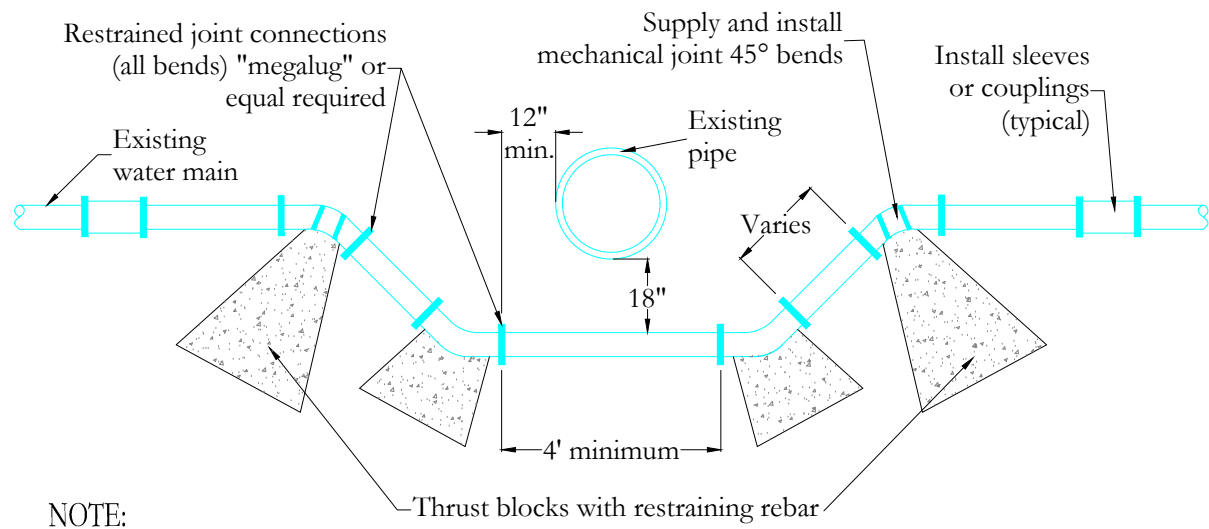
NO.	DATE	BY	REVISIONS

DATE: MAY 2026
DRAWN: JEO/KSM
CHECKED: RTF

PROJECT / LOCATION:
1200 WEST WATERLINE FROM
5450 SOUTH TO 5650 SOUTH (CUL-DE-SAC)
RIVERDALE, UTAH
TITLE: DETAILS

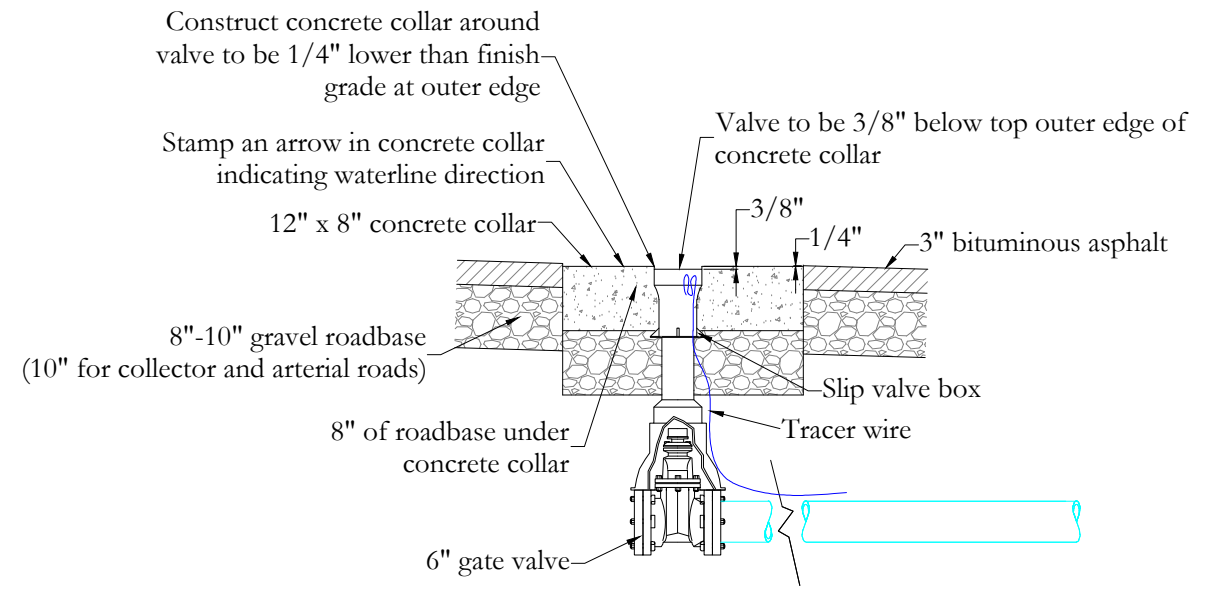
CLIENT: RIVERDALE CITY
PROJECT NUMBER: RC.25005
FILE: ~RC.25005 07 Details.dwg
SHEET: 12 of 14

LOCATION: Z:\CEC Clients\Rivdale City\Projects\RC.25005 1200 West Waterline\~CADD C3D 2025\Planset\~Addendum 1\~CADD C3D 2025 DATE: 5/22/2026 9:05 AM

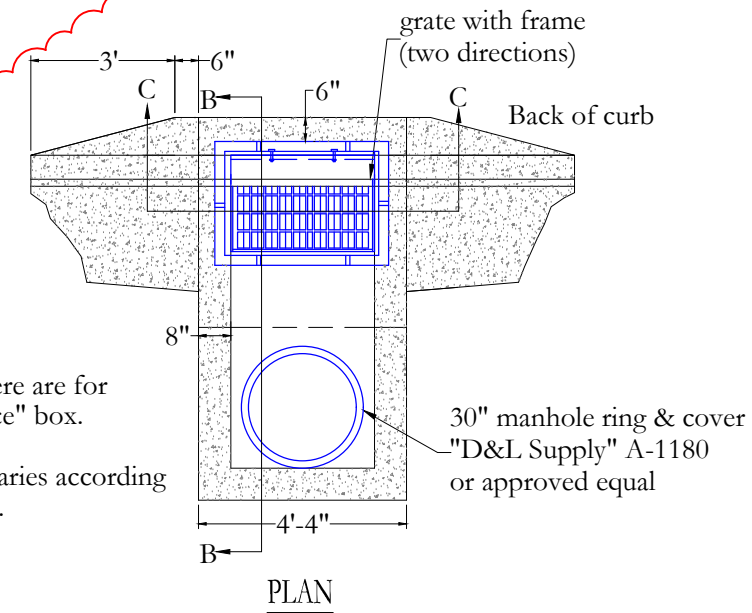


NOTE:
City residents or commercial water users to be given 48-hour written notice before looping or shutting down any waterline.

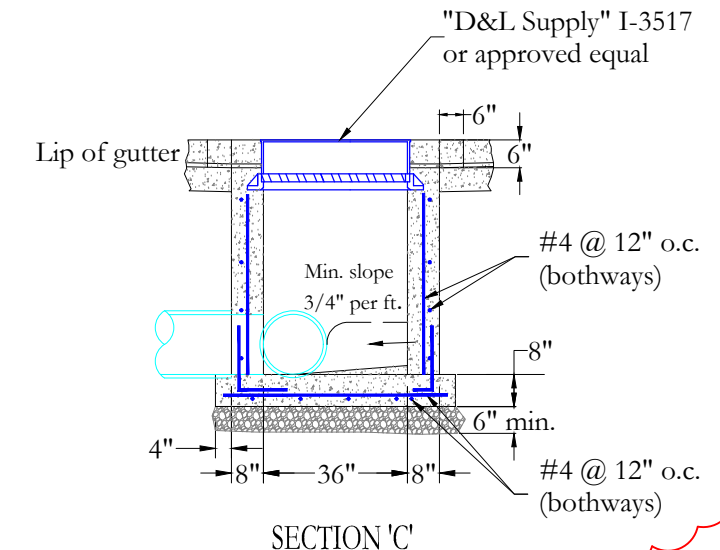
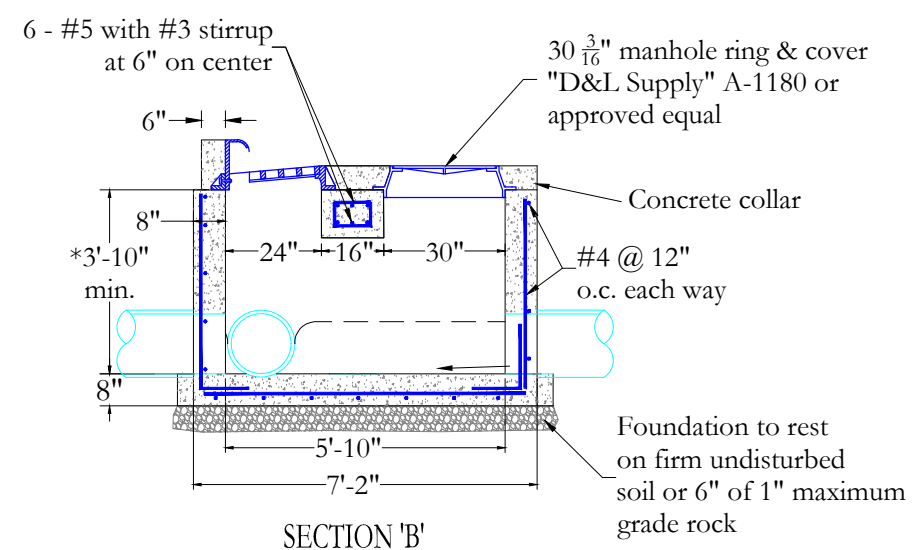
TYPICAL WATER LOOP
SCALE: NONE



GATE VALVE CONCRETE COLLAR
SCALE: NONE



NOTE:
1. Details here are for "cast-in-place" box.
2. *Depth varies according to the grade.



HOODED COMBINATION BOX
SCALE: NONE

PROFESSIONAL STRUCTURAL ENGINEER
 21 MAY 26
 No. 341144
 R. TODD FREEMAN
STATE OF UTAH

CIVIL ENGINEERING CONSULTANTS, PLLC.
 5141 SOUTH 1500 WEST
 RIVERDALE, UT 84405
 801.866.0550

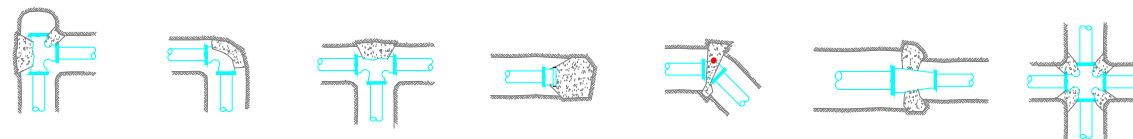
NO.	DATE	BY	REVISIONS
1	5/21/26	RTF	change catch basins to combination boxes

DATE: MAY 2026
 DRAWN: JEO/KSM
 CHECKED: RTF

PROJECT / LOCATION:
 1200 WEST WATERLINE FROM
 5450 SOUTH TO 5650 SOUTH (CUL-DE-SAC)
 RIVERDALE, UTAH
TITLE:
 DETAILS

CLIENT:
 RIVERDALE CITY
PROJECT NUMBER:
 RC.25005
FILE:
 ~RC.25005 07 Details.dwg
SHEET:
 13 of 14

LOCATION: Z:\CEC Clients\Rivdale City\Projects\RC.25005 1200 West Waterline\~CADD C3D 2025\Plans\~Addendum 1\~CADD C3D 2025 DATE: 5/22/2026 9:05 AM



Tee with cap 90° elbow Tee Cap or plug Elbow Reducer Cross

All utility trenching within road right-of-ways which are 66' wide or wider shall have flowable backfill material

Safe bearing loads	
Soil type	Safe bearing load (lb/ft ²)
Sand	1000
Sand & gravel	1500
Sand & gravel cemented with clay	2000
Shale	5000

Thrust block area against trench wall (square feet) = Thrust on fitting / Safe bearing load of soil

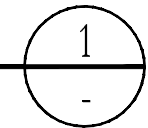
All trenching for service connections shall have 100% roadbase backfill material above the pipe zone within any road right-of-way

Thrust on fittings in pounds @ 1 pound per square inch of water pressure *				
Pipe size	Tees	90° bends	45° bends	22.5° bends
8"	65.8	93	50.4	25.5
10"	107.5	152	82.4	41.7
12"	153.1	216.4	117.2	59.4

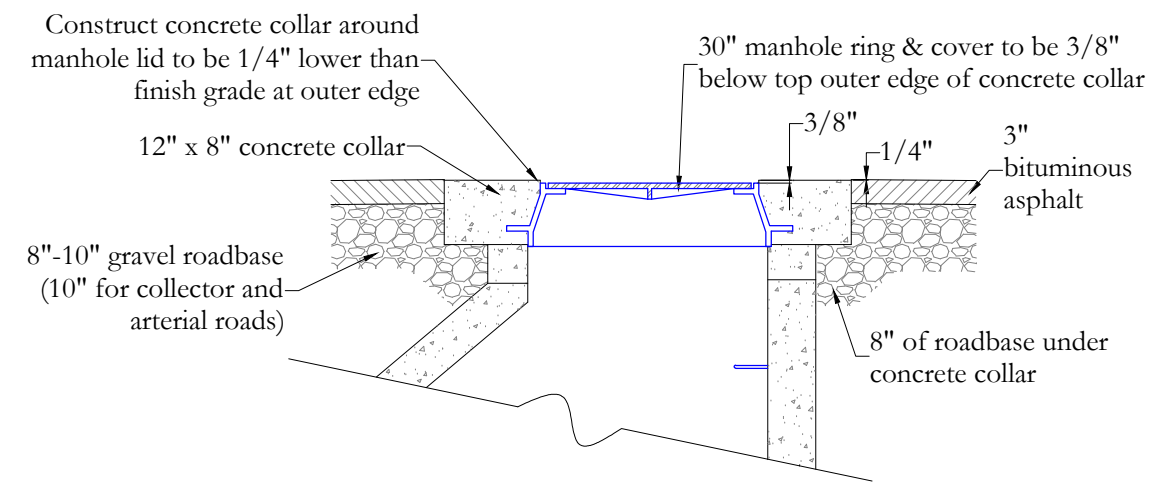
* multiply thrust by maximum water pressure

CONCRETE THRUST BLOCK DETAILS*

SCALE: NONE

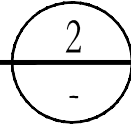


*All bolts on pipe fittings to be kept clear of concrete. Mega-lugs or One-lok to be used with thrust blocks



MANHOLE CONCRETE COLLAR DETAIL

SCALE: NONE



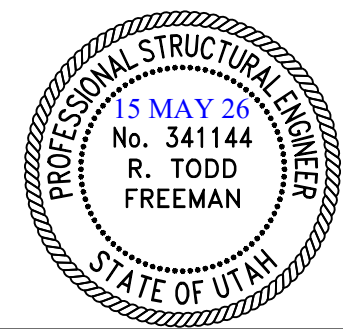
CIVIL ENGINEERING CONSULTANTS, PLLC.
5141 SOUTH 1500 WEST
RIVERDALE, UT 84405
801.866.0550

NO.	DATE	BY	REVISIONS

DATE: MAY 2026
DRAWN: JEO/KSM
CHECKED: RTF

PROJECT / LOCATION:
1200 WEST WATERLINE FROM
5450 SOUTH TO 5650 SOUTH (CUL-DE-SAC)
RIVERDALE, UTAH
TITLE: DETAILS

CLIENT: RIVERDALE CITY
PROJECT NUMBER: RC.25005
FILE: ~RC.25005 07 Details.dwg
SHEET: 14 of 14



LOCATION: Z:\CEC Clients\Riverdale City\Projects\RC.25005 1200 West Waterline\~CADD C3D 2025\Plans\~Addendum 1\~CADD C3D 2025 DATE: 5/22/2026 9:05 AM

STORM WATER POLLUTION PREVENTION PLAN
1200 WEST WATERLINE FROM
5400 SOUTH TO 5650 SOUTH (CUL-DE-SAC)

SCOPE OF PROJECT

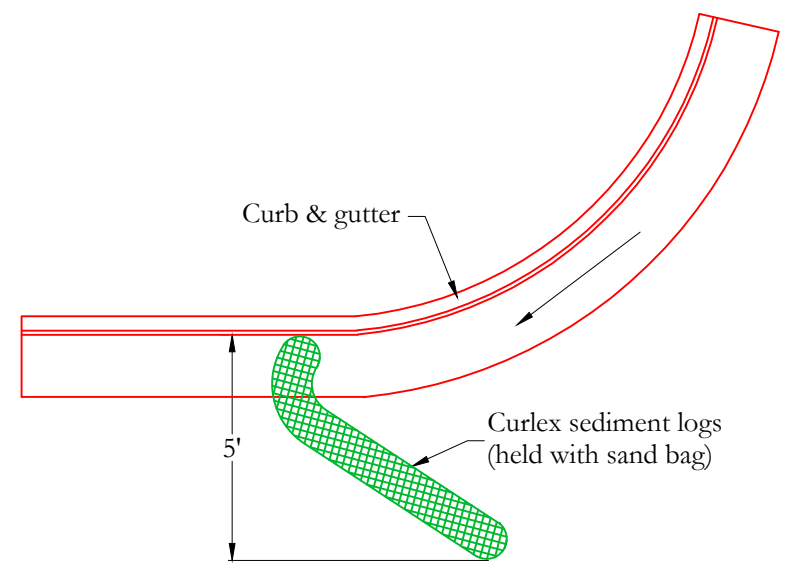
The work includes furnishing all labor, tools, materials, equipment, transportation, and services required for construction of the above projects; consisting of the following items of work: mobilization; obtaining all bonds and insurance, removal of curb & gutter, and sidewalk; removal of asphalt and roadbase; installation of approximately 1,710 feet of 8" PVC C-900 DR18 waterline; remove and upgrade fire hydrants; updating water meters and service lines; installation of asphalt; installation of curb & gutter, sidewalk and handicap ramps, and miscellaneous landscaping and all appurtenant work in accordance with the Drawings and Specifications prepared by the Engineer, CEC, Civil Engineering Consultants, PLLC.

SITE DETAILS

1. The Construction site is located within the boundaries of Riverdale City, Weber County. Estimated area that will be developed is 2.85 acres. The construction will be limited to the land contained within the right-of-way as shown on the drawings.
2. The Coefficient of Run-off following construction will not be changed
3. The collection and detention of storm water will follow the Riverdale City approved design drawings.
4. The drainage pattern on the existing site will be altered minorly. The direction of storm water flow will remain the same. The only changes will be how the rainfall/storm water will be collected & directed.
5. The construction boundaries are shown on the improvement drawings and are limited to existing and new right-of-way.

MISCELLANEOUS NOTES

1. The construction wash out area is to be used for on-site construction activities only.
2. The contractor shall furnish portable restroom facilities and locate in a secure area.
3. The contractor shall establish a monitoring process to document the management of all Best Management Practices established on site. The monitoring process shall be noted, documented and maintained on a weekly basis.



CURLEX SEDIMENT LOG PROTECTION
 SCALE: NONE 1

CIVIL ENGINEERING CONSULTANTS, PLLC.
 5141 SOUTH 1500 WEST
 RIVERDALE, UT 84405
 801.866.0550

NO.	DATE	BY	REVISIONS

DATE: MAY 2026
 DRAWN: JEO/KSM
 CHECKED: RTF

PROJECT / LOCATION:
 1200 WEST WATERLINE FROM
 5450 SOUTH TO 5650 SOUTH (CUL-DE-SAC)
 RIVERDALE, UTAH

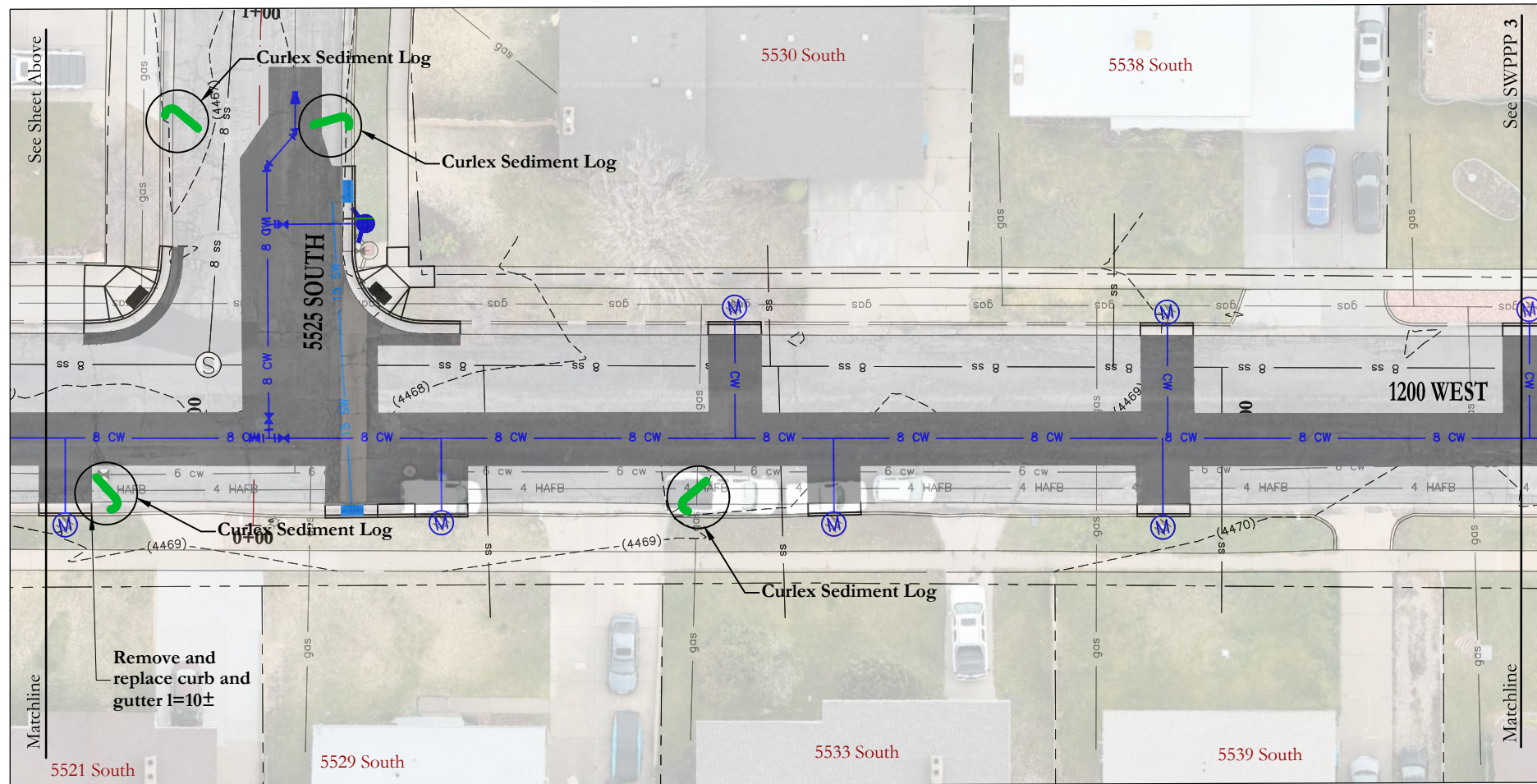
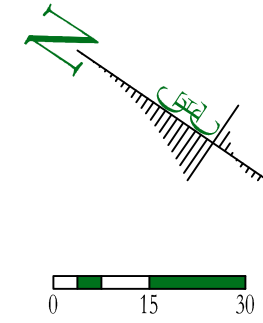
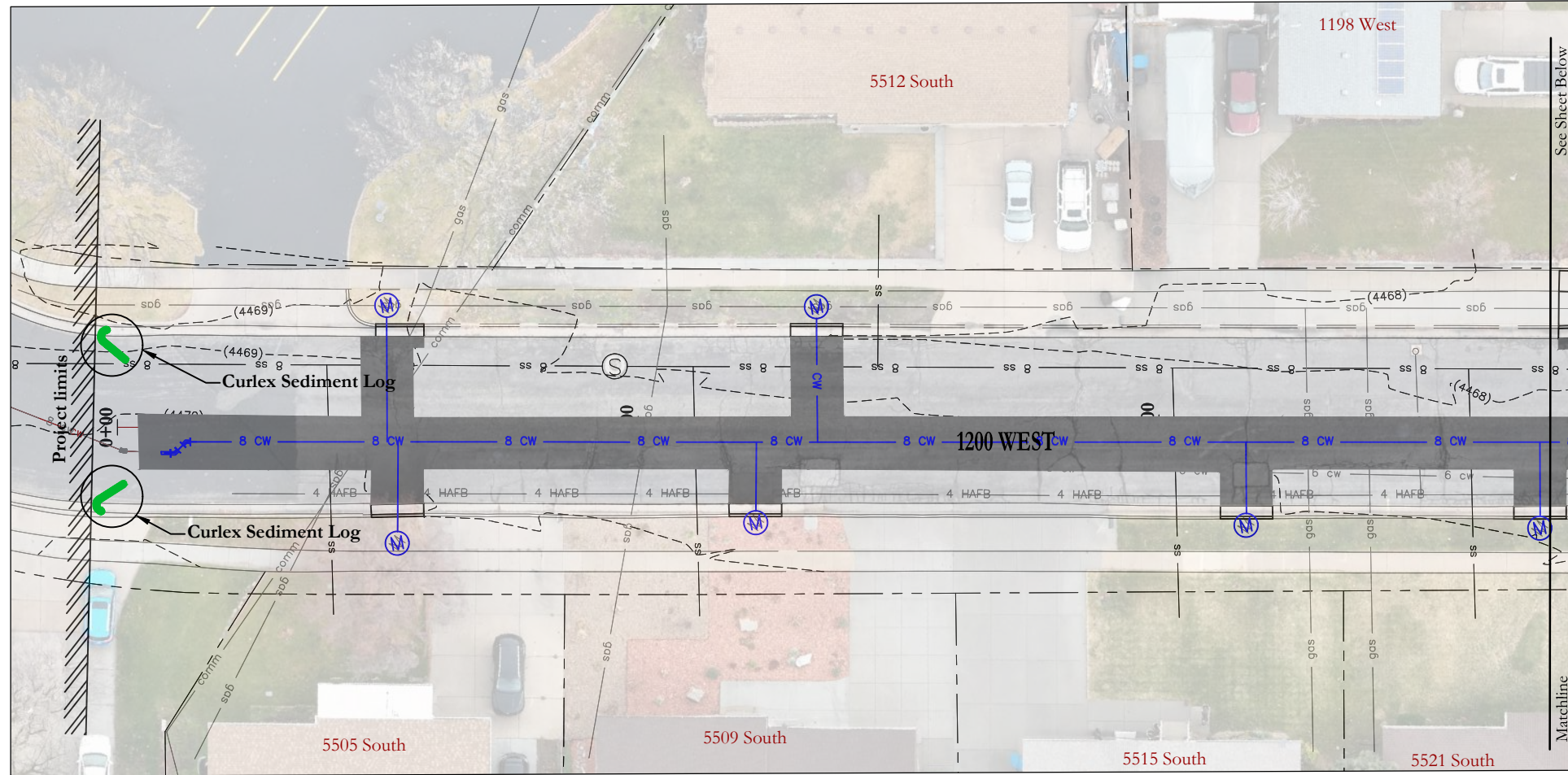
TITLE:
 SWPPP NOTES & DETAILS

CLIENT:
 RIVERDALE CITY

PROJECT NUMBER:
 RC.25005

FILE:
 ~RC.25005 SWPPP.dwg

SHEET:
 SWPPP 1



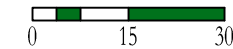
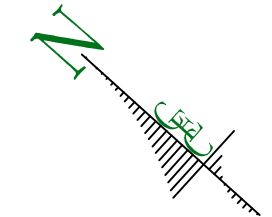
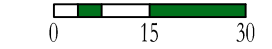
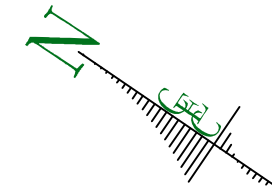
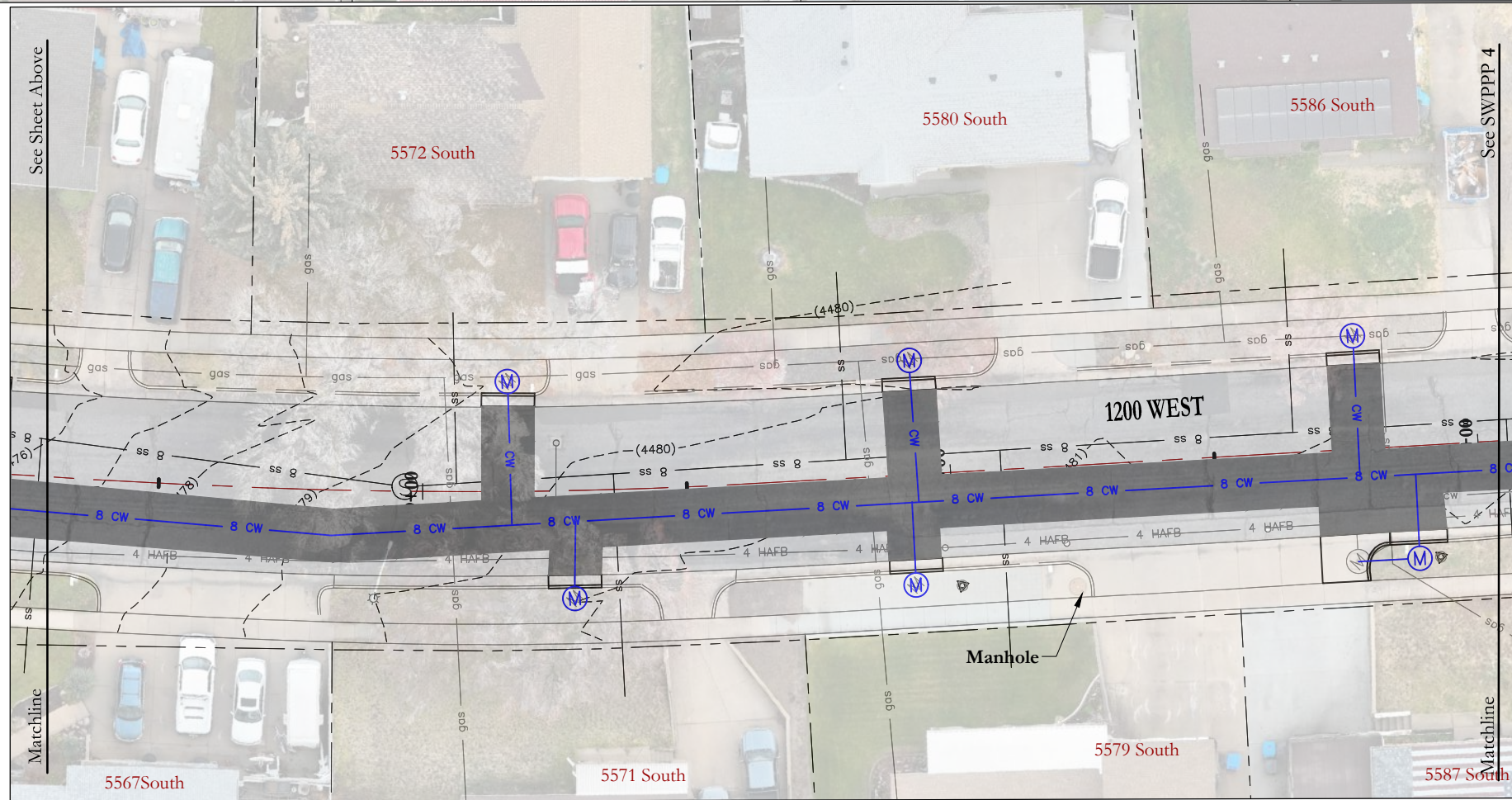
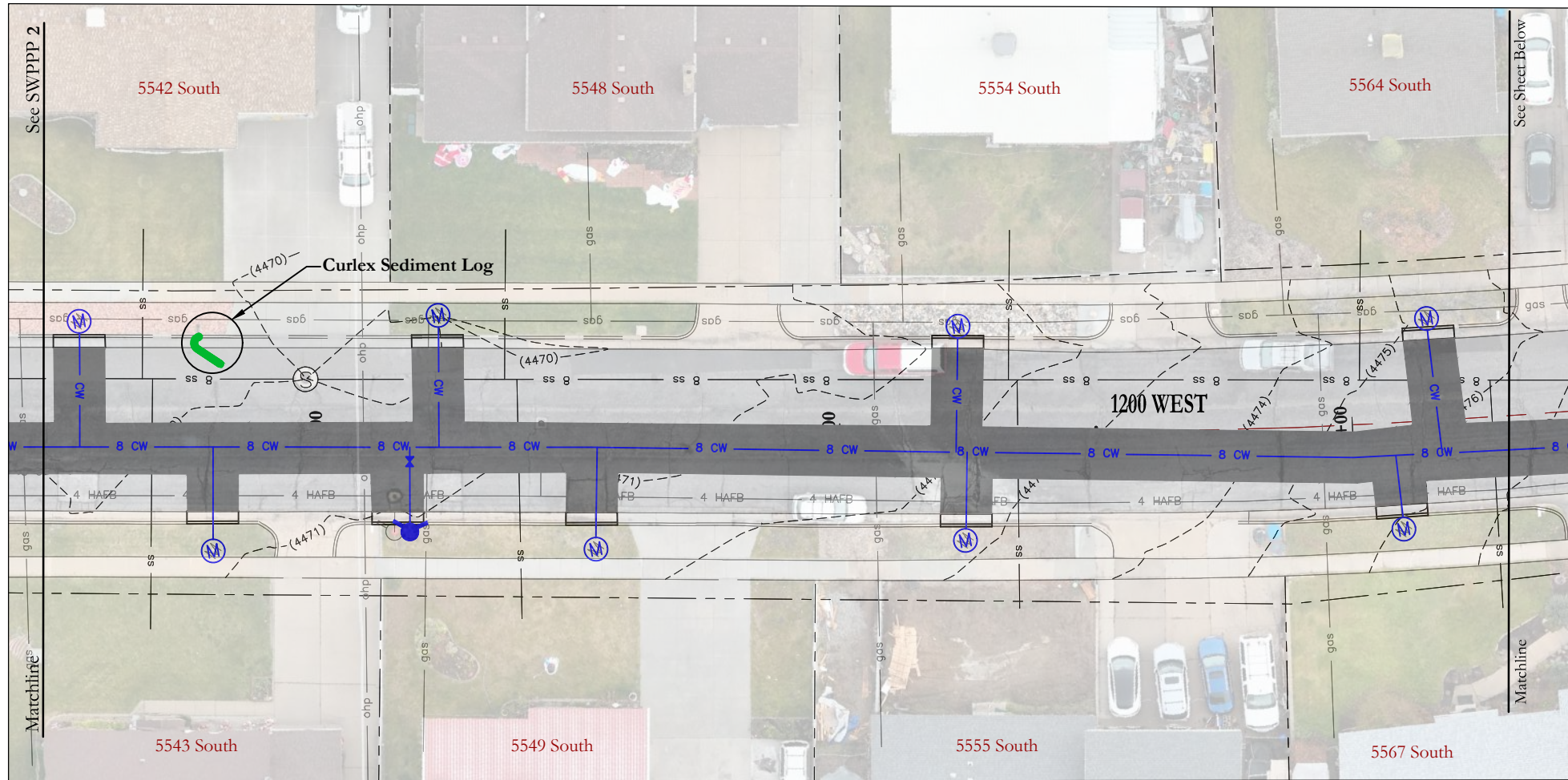
CIVIL ENGINEERING
CONSULTANTS, PLLC.
5141 SOUTH 1500 WEST
RIVERDALE, UT 84405
801.866.0550

NO.	DATE	BY	REVISIONS

DATE: MAY 2026
DRAWN: JEO/KSM
CHECKED: RTF

PROJECT / LOCATION:
1200 WEST WATERLINE FROM
5450 SOUTH TO 5650 SOUTH (CUL-DE-SAC)
RIVERDALE, UTAH
TITLE: SWPPP SITE PLAN

CLIENT: RIVERDALE CITY
PROJECT NUMBER: RC.25005
FILE: ~RC.25005 SWPPP.dwg
SHEET: SWPPP 2



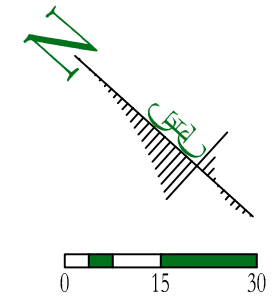
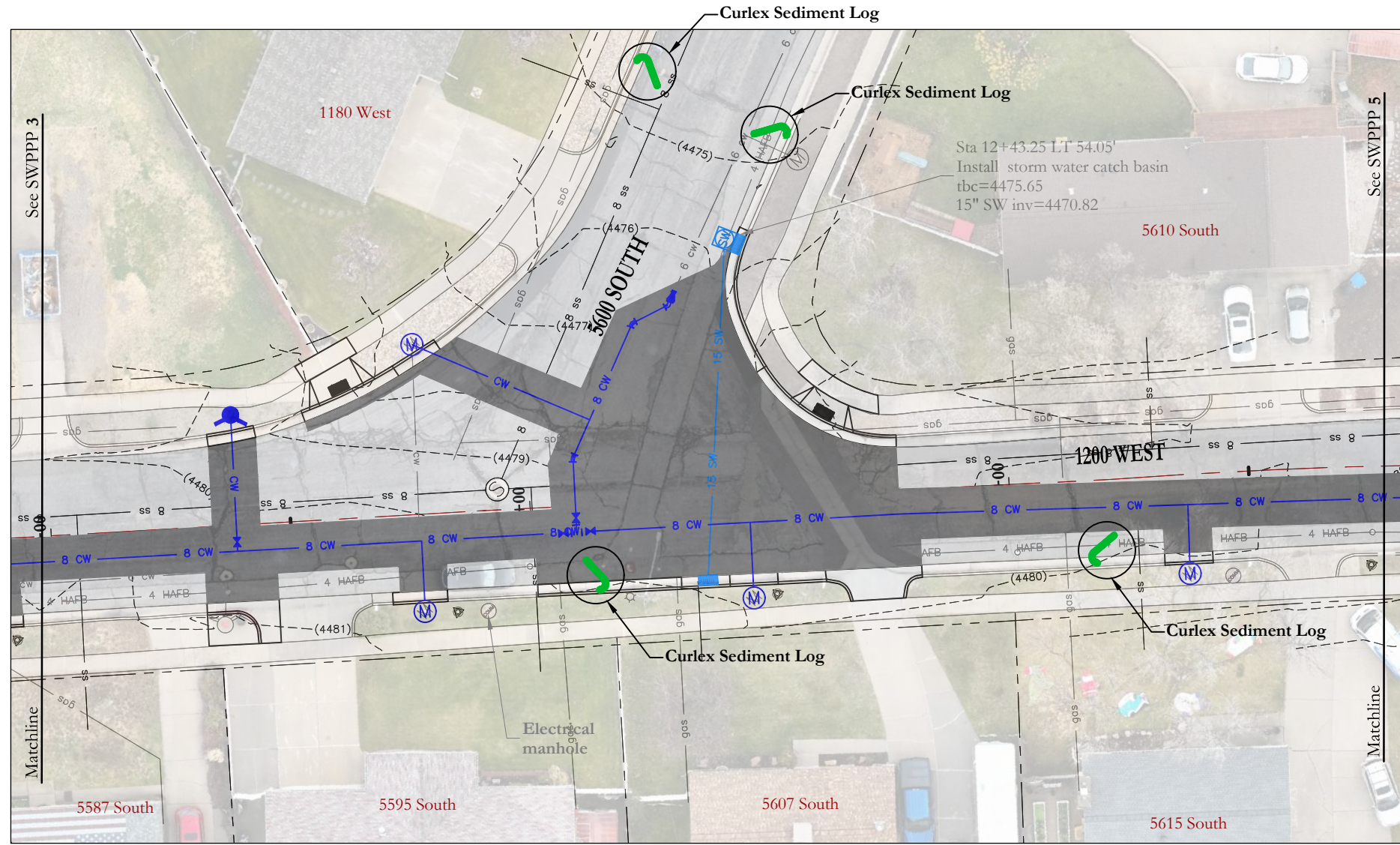
CIVIL ENGINEERING
CONSULTANTS, PLLC.
5141 SOUTH 1500 WEST
RIVERDALE, UT 84405
801.866.0550

NO.	DATE	BY	REVISIONS

DATE: MAY 2026
DRAWN: JEO/KSM
CHECKED: RTF

PROJECT / LOCATION:
1200 WEST WATERLINE FROM
5450 SOUTH TO 5650 SOUTH (CUL-DE-SAC)
RIVERDALE, UTAH
TITLE: SWPPP SITE PLAN

CLIENT: RIVERDALE CITY
PROJECT NUMBER: RC.25005
FILE: ~RC.25005 SWPPP.dwg
SHEET: SWPPP 3



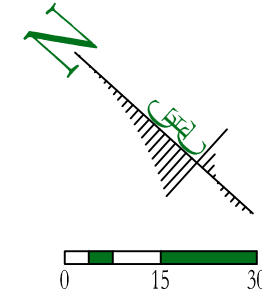
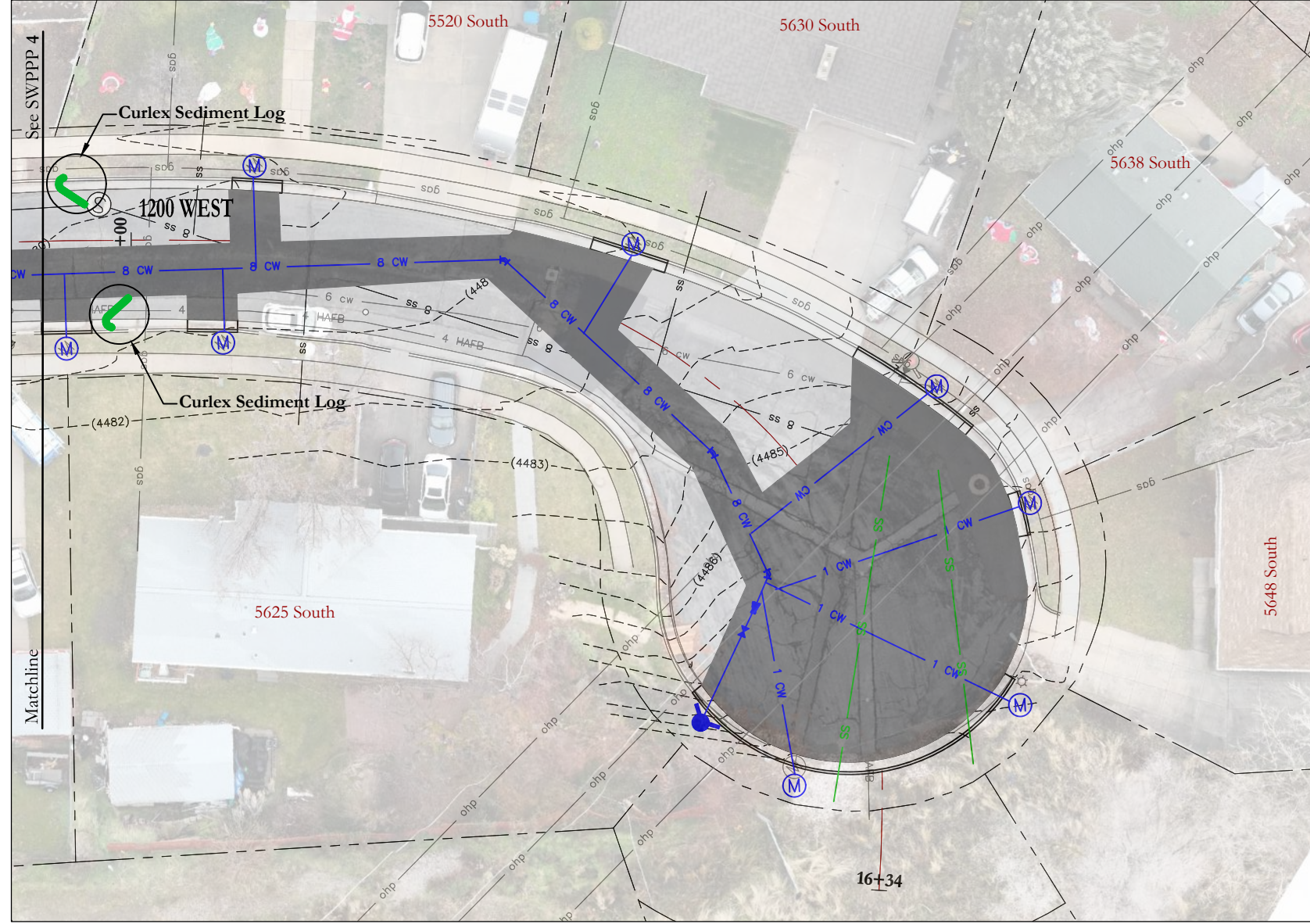
CIVIL ENGINEERING
CONSULTANTS, PLLC.
5141 SOUTH 1500 WEST
RIVERDALE, UT 84405
801.866.0550

NO.	DATE	BY	REVISIONS

DATE: MAY 2026
DRAWN: JEO/KSM
CHECKED: RTF

PROJECT / LOCATION:
1200 WEST WATERLINE FROM
5450 SOUTH TO 5650 SOUTH (CUL-DE-SAC)
RIVERDALE, UTAH
TITLE:
SWPPP SITE PLAN

CLIENT:
RIVERDALE CITY
PROJECT NUMBER:
RC.25005
FILE:
~RC.25005 SWPPP.dwg
SHEET:
SWPPP 4



CEC
 CIVIL ENGINEERING
 CONSULTANTS, PLLC.
 5141 SOUTH 1500 WEST
 RIVERDALE, UT 84405
 801.866.0550

NO.	DATE	BY	REVISIONS

DATE: MAY 2026
 DRAWN: JEO/KSM
 CHECKED: RTF

PROJECT / LOCATION:
 1200 WEST WATERLINE FROM
 5450 SOUTH TO 5650 SOUTH (CUL-DE-SAC)
 RIVERDALE, UTAH
 TITLE:
 SWPPP SITE PLAN

CLIENT:
 RIVERDALE CITY
 PROJECT NUMBER:
 RC.25005
 FILE:
 ~RC.25005 SWPPP.dwg
 SHEET:
 SWPPP 5