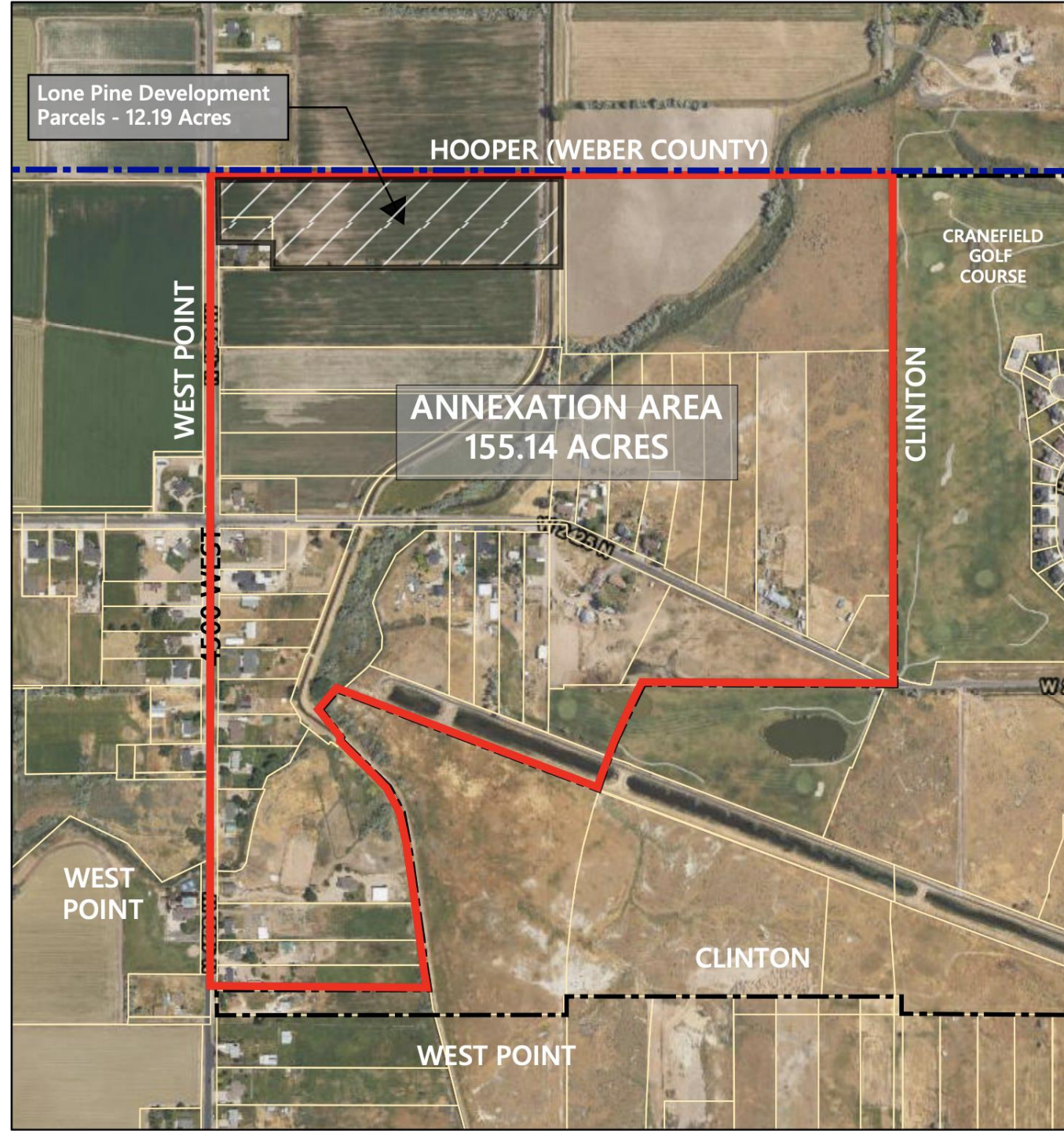
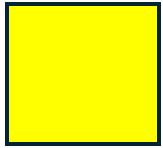


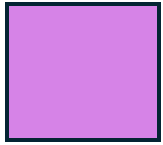
Annexation

- Landowners carry out petition ✕
- City Council votes to accept petition ✕
- City certifies petition as legally viable ✕
- Notices are mailed to affected landowners ✕
- 30-day protest period ✕
- Notices are mailed for public hearing
- Public hearing
- City Council votes on annexation
- If approved, City sends plat to lieutenant gov
- State issues certificate of annexation
- Documents are recorded at the County

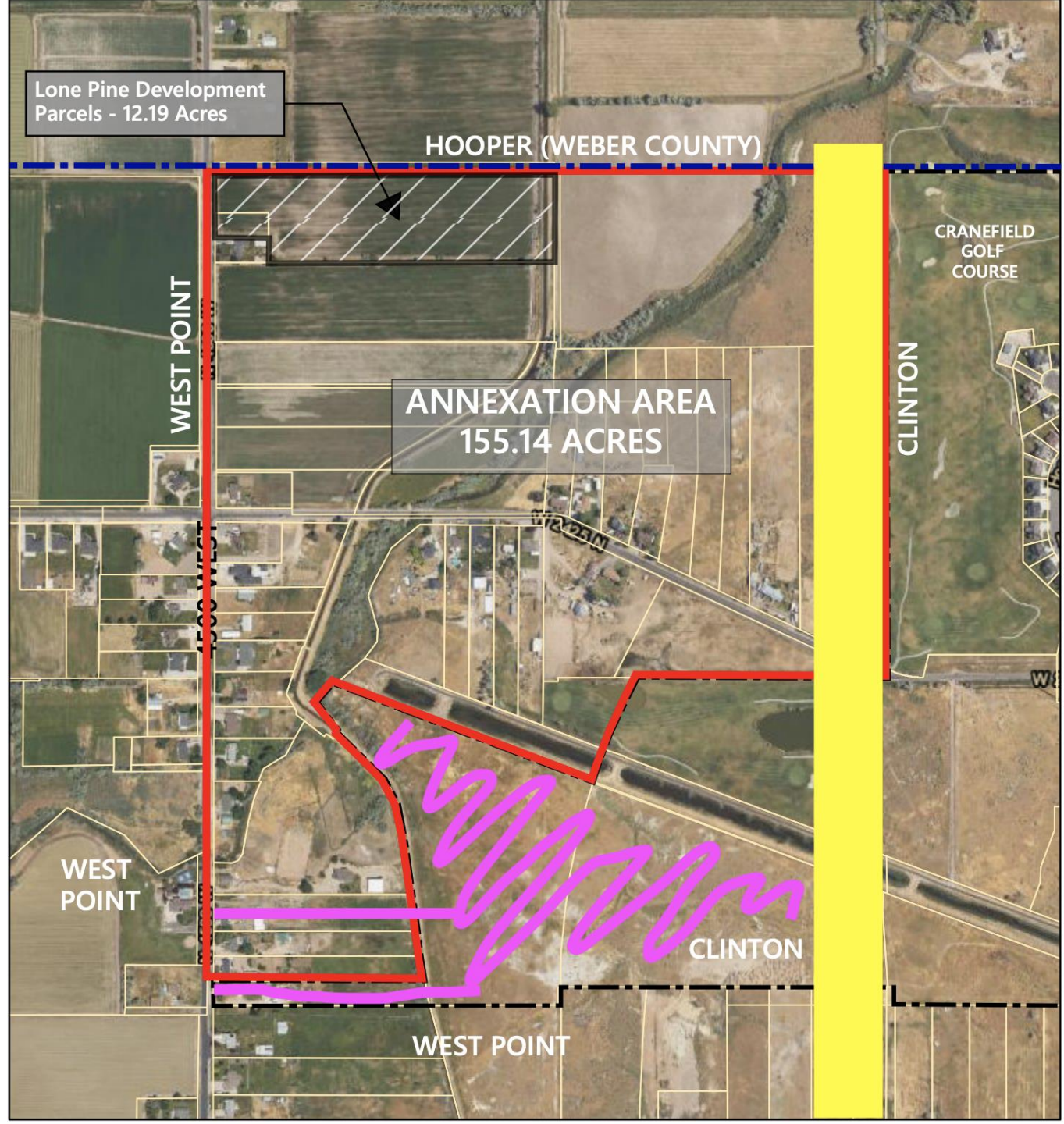




S.R. 177 (West Davis Highway)



Nilson Homes project



Services to consider

- Public safety
- Sanitary Sewer
- Culinary Water
- Storm Drain
- Secondary Water
- Garbage/recycling
- Fiber internet



What is the A-1 Zone? (e.g. animals)

1 animal unit =

1 horse or cow, OR

3 pigs or sheep, OR

5 small non-carnivorous (rabbits, etc.)

1 fowl unit =

50 each of chickens, pheasants, and/or pigeons

Not to exceed 200 on 5+ acres

Additional 200 may be allowed if less than 5 months old; OR

10 each of ducks, geese, and/or turkeys

Not to exceed 20 on 5+ acres



First acre: 2 animal units + 1 fowl unit

Each additional half-acre: 1 animal unit + 1 fowl unit (max 2 fowl units)

Properties of 5+ acres are allowed larger numbers for seasonal pasturing

Code enforcement?

Future development?

General Plan?