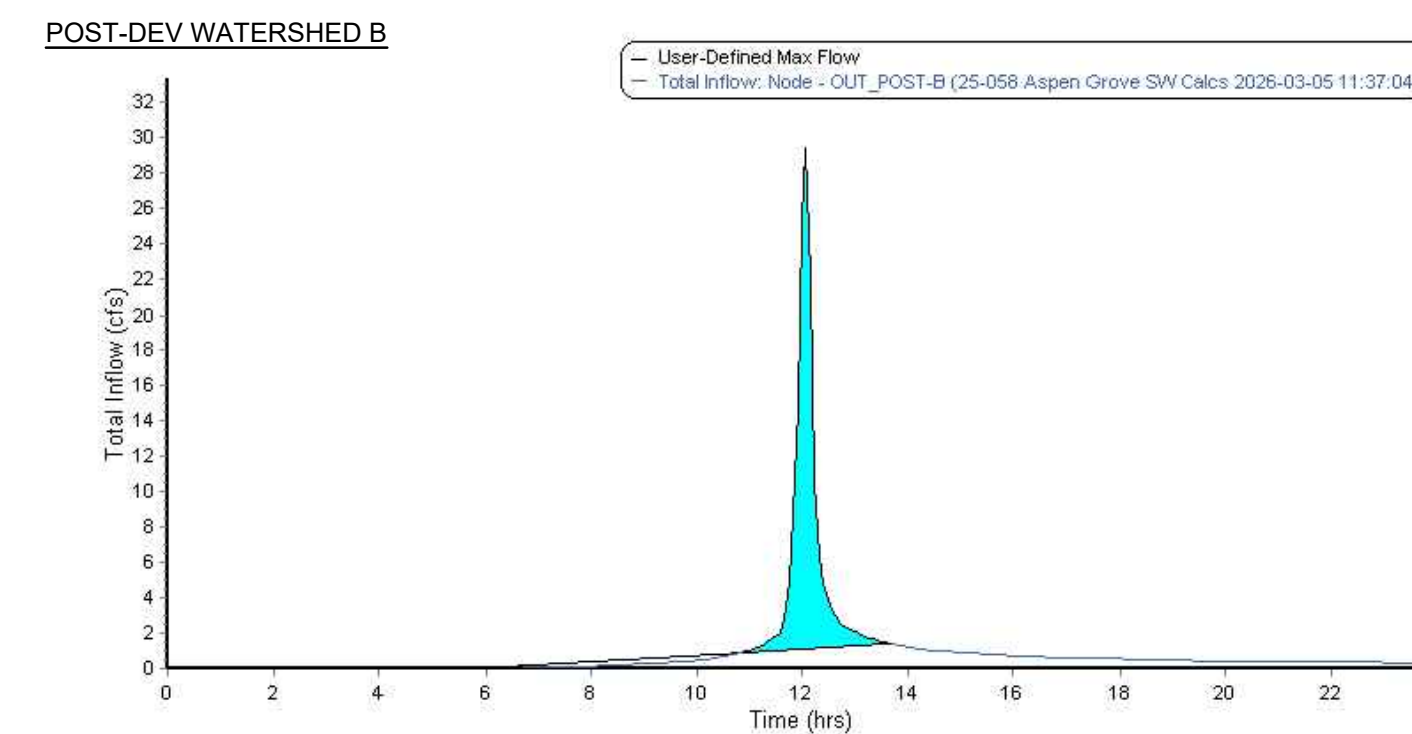
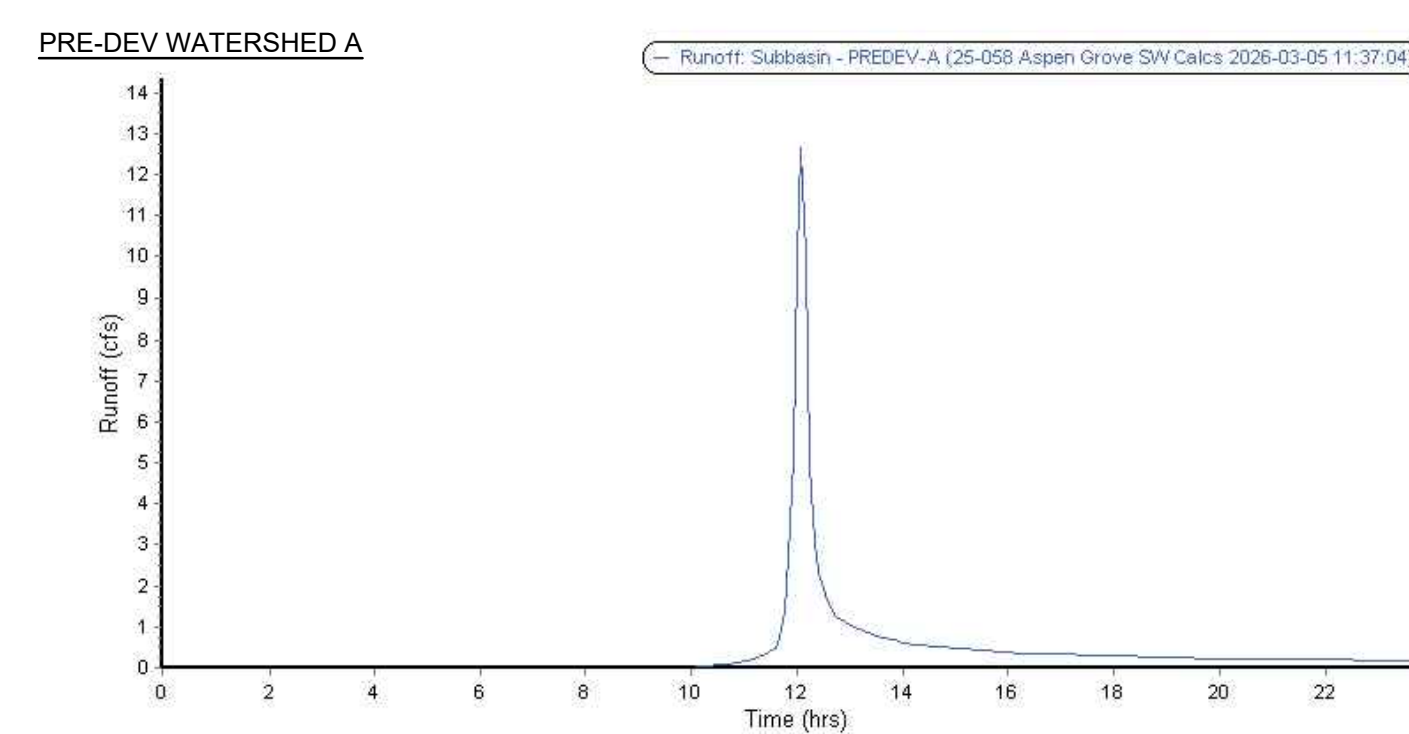


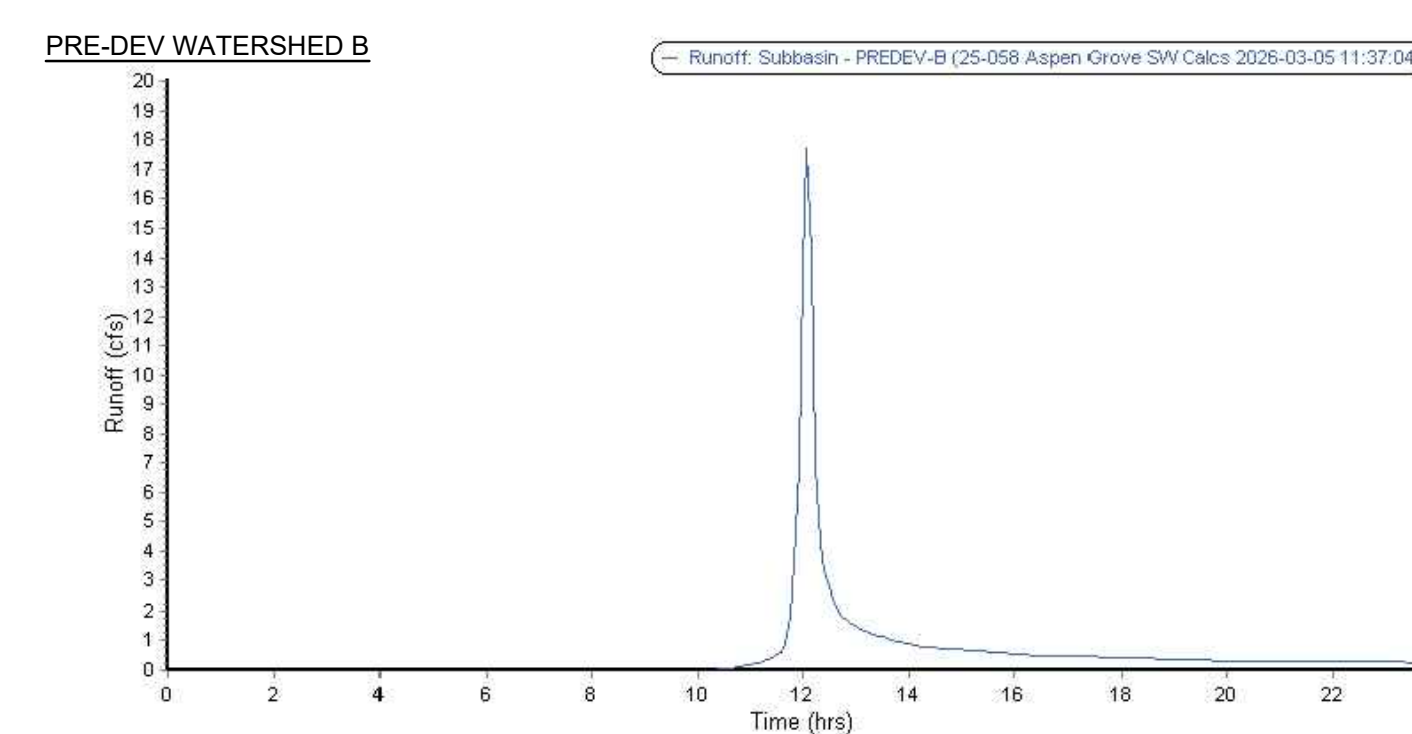
Total Inflow Summary Table	
Time period	Element ID: OUT_POST-A
From: 03/04/2026, 12:00:00 AM	Maximum Total Inflow (cfs): 20.36
To: 03/05/2026, 12:00:00 AM	Minimum Total Inflow (cfs): 0.00
Thresholds:	Event Mean Total Inflow (cfs): 0.63
Exceedance: 0	Duration of Exceedances (hrs): N/A
Deficit: 0	Duration of Deficits (hrs): N/A
Detention storage:	Number of Exceedances: N/A
Max flow: 2.15	Number of Deficits: N/A
	Volume of Exceedance (RF): N/A
	Volume of Deficit (RF): N/A
	Total Inflow Volume (RF): 54504.06
	Detention Storage (RF): 21162.27



Total Inflow Summary Table	
Time period	Element ID: OUT_POST-B
From: 03/04/2026, 12:00:00 AM	Maximum Total Inflow (cfs): 29.35
To: 03/05/2026, 12:00:00 AM	Minimum Total Inflow (cfs): 0.00
Thresholds:	Event Mean Total Inflow (cfs): 0.91
Exceedance: 0	Duration of Exceedances (hrs): N/A
Deficit: 0	Duration of Deficits (hrs): N/A
Detention storage:	Number of Exceedances: N/A
Max flow: 1.45	Number of Deficits: N/A
	Volume of Exceedance (RF): N/A
	Volume of Deficit (RF): N/A
	Total Inflow Volume (RF): 73935.3
	Detention Storage (RF): 40203.15



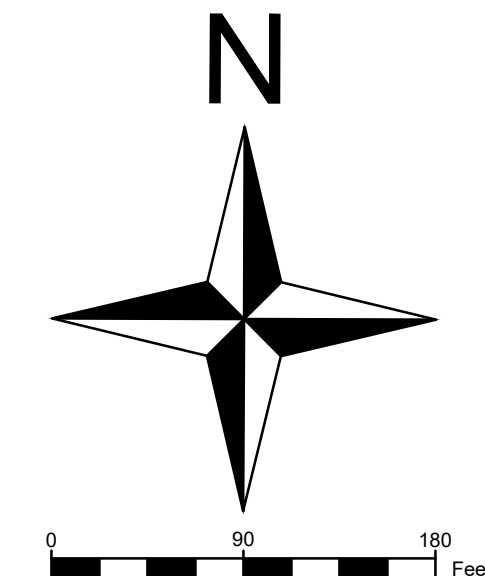
Runoff Summary Table	
Time period	Element ID: PREDEV-A
From: 03/04/2026, 12:00:00 AM	Maximum Runoff (cfs): 12.63
To: 03/05/2026, 12:00:00 AM	Minimum Runoff (cfs): 0.00
Thresholds:	Event Mean Runoff (cfs): 0.38
Exceedance: 0	Duration of Exceedances (hrs): N/A
Deficit: 0	Duration of Deficits (hrs): N/A
Detention storage:	Number of Exceedances: N/A
Max flow: 1.45	Number of Deficits: N/A
	Volume of Exceedance (RF): N/A
	Volume of Deficit (RF): N/A
	Total Runoff (RF): 33064.66
	Detention Storage (RF): N/A



Runoff Summary Table	
Time period	Element ID: PREDEV-B
From: 03/04/2026, 12:00:00 AM	Maximum Runoff (cfs): 17.70
To: 03/05/2026, 12:00:00 AM	Minimum Runoff (cfs): 0.00
Thresholds:	Event Mean Runoff (cfs): 0.54
Exceedance: 0	Duration of Exceedances (hrs): N/A
Deficit: 0	Duration of Deficits (hrs): N/A
Detention storage:	Number of Exceedances: N/A
Max flow: 1.45	Number of Deficits: N/A
	Volume of Exceedance (RF): N/A
	Volume of Deficit (RF): N/A
	Total Runoff (RF): 46403.7
	Detention Storage (RF): N/A

- LEGEND EXISTING**
- PROPERTY BOUNDARY
 - sd — STORM DRAIN LINE
 - w — CULINARY WATER LINE
 - g — GAS LINE
 - ss — SEWER LINE
 - e — BURIED POWER LINE
 - c — COMMUNICATION LINE
 - #### — CONTOUR MAJOR
 - ##### — CONTOUR MINOR
 - ASPHALT
 - OPEN FACE CURB AND GUTTER
 - x — FENCE
 - CONCRETE
 - ⊙ — CULINARY WATER VALVE
 - ⊙ — CULINARY WATER METER
 - ⊙ — FIRE HYDRANT
 - ⊙ — CATCH BASIN (STORM DRAIN BOX)
 - D — STORM DRAIN MANHOLE
 - S — SEWER MANHOLE
 - E — ELECTRICAL BOX
 - C — COMMUNICATIONS BOX
 - SIGN

- LEGEND PROPOSED**
- W — CULINARY WATER LINE (SIZE SHOWN ON PLAN)
 - SD — STORM DRAIN LINE (SIZE SHOWN ON PLAN)
 - SS — SANITARY SEWER LINE (SIZE SHOWN ON PLAN)
 - CATCH CURB AND GUTTER
 - MOUNTABLE CURB & GUTTER
 - RIBBON CURB
 - CONCRETE SIDEWALK
 - ASPHALT PAVEMENT
 - BUILDING SETBACK
 - ⊙ — CULINARY WATER VALVE
 - ⊙ — FIRE HYDRANT
 - ⊙ — CULINARY WATER METER
 - D — STORM DRAIN MANHOLE
 - — STORM DRAIN BOX
 - — STORM DRAIN CURB INLET BOX
 - S — SEWER MANHOLE
 - WATERSHED BOUNDARY



STORMWATER NARRATIVE:

THIS SITE WILL BE DESIGNED TO DETAIN THE CACHE VALLEY 100-YR 24-HR STORM AND RETAIN THE 90TH PERCENTILE STORM OF 0.60 INCHES. THE STORMWATER RUNOFF VOLUME WAS CALCULATED BY THE SCS TR-55 CURVE NUMBER METHOD USING A COMPUTER AIDED SIMULATION. THE DETENTION PONDS HAVE BEEN SIZED TO STORE THE ADDITIONAL RUNOFF FROM THE ADJACENT SUBDIVISIONS (CEDAR SPRINGS, MEADOW WOOD, & THE COVE AT HYDE PARK PHASE 2). ALL STORMWATER CALCULATIONS AND FINAL DESIGN IS TO CONFORM WITH THE CACHE VALLEY STORMWATER DESIGN STANDARDS.

STORAGE SUMMARY

WATERSHED A:

REQUIRED STORAGE:
 EXISTING SUBDIVISIONS: 23,058 CF
 PHASE 1: 22,881 CF
 TOTAL: 45,939 CF

PROVIDED STORAGE (POND A): 44,238 CF

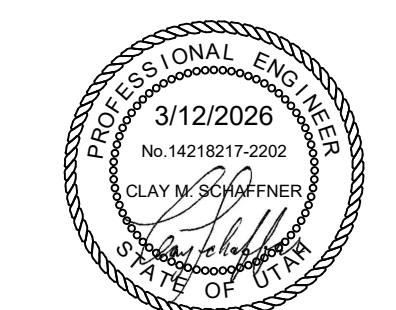
WATERSHED B:

REQUIRED STORAGE: 40,203 CF

PROVIDED STORAGE (POND B): 40,447 CF

MARK: DATE: DESCRIPTION:

PROJECT #: 25-058
 DRAWN BY: L. WESTON
 PROJECT MANAGER: C. SCHAFFNER
 ISSUED: 03/12/2026



CIVIL OVERVIEW

ASPEN GROVE SUBDIVISION
 500 SOUTH WOLF PACK WAY
 HYDE PARK, UT 84318

civilsolutionsgroup inc.

CACHE VALLEY | P: 435.213.3762
 SALT LAKE | P: 801.216.3192
 UTAH VALLEY | P: 801.874.1432
 info@civilsolutionsgroup.net
 www.civilsolutionsgroup.net