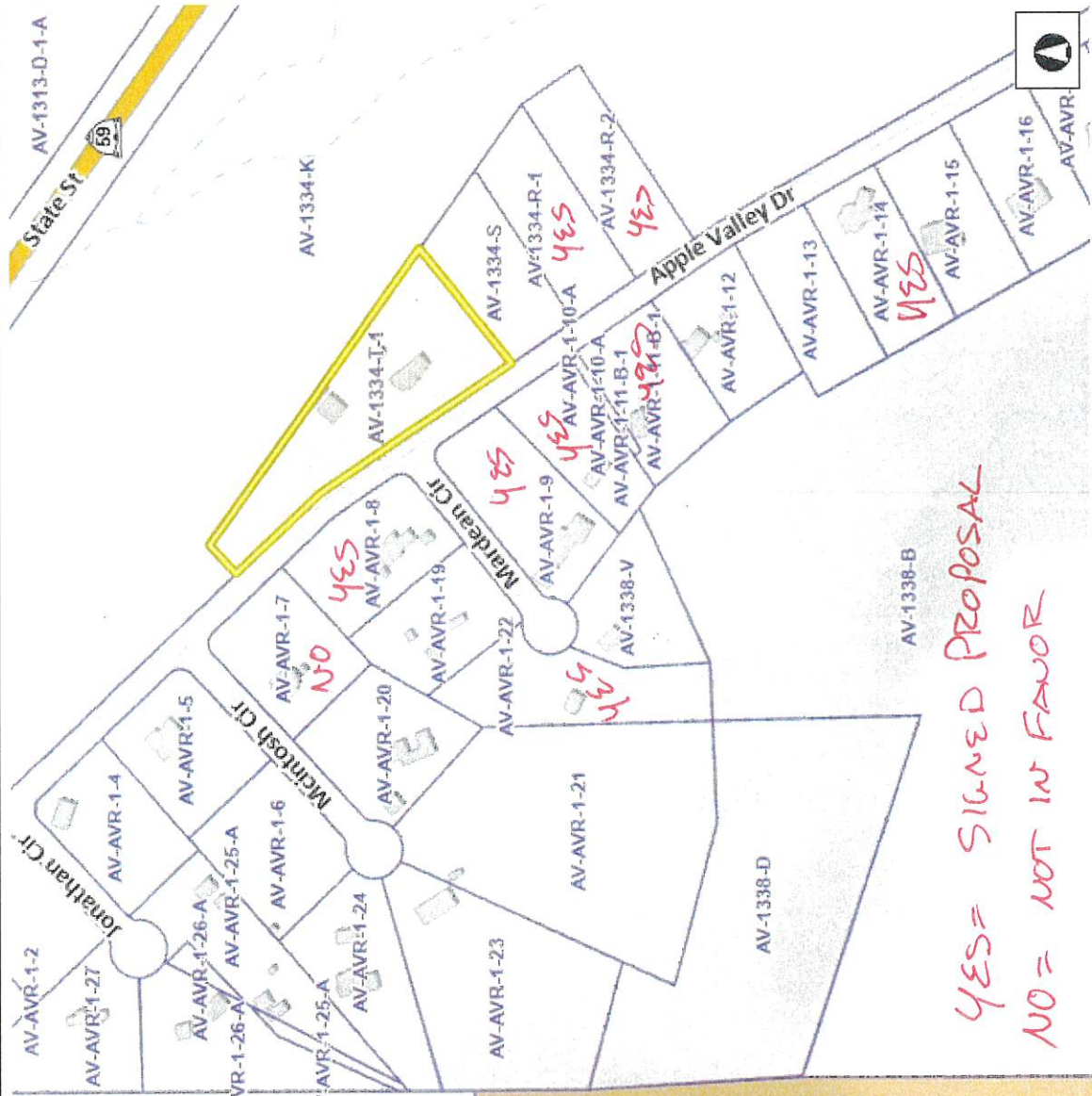




8 FOR 1 AGAINST 80% NO HEKE TO SPEAK -

# Title



YES = SIGNED PROPOSAL  
NO = NOT IN FAVOR



**Legend**

Parcels	Ownership
[White Box]	U.S. Forest Service
[Green Box]	U.S. Forest Service Wilderness
[Yellow Box]	Bureau of Land Management
[Orange Box]	Bureau of Land Management Wide
[Light Blue Box]	National Park Service
[Dark Blue Box]	Shiwiwi Reservation
[Light Green Box]	Utah Division of Wildlife Resources
[Light Purple Box]	Utah Division of Transportation
[Light Yellow Box]	State Park
[Light Cyan Box]	State of Utah
[Light Orange Box]	Washington County
[Light Green Box]	Municipally Owned
[Light Blue Box]	School District
[Light Purple Box]	Privately Owned
[Light Cyan Box]	Water
[Light Orange Box]	Water Conservancy District
[Light Green Box]	State Assessed Oil and Gas
[Light Purple Box]	Mining Claim

**Notes**

DISCLAIMER: The information shown on this map was compiled from different GIS sources. The land base and facility information on this map is for display purposes only and should not be relied upon without independent verification as to its accuracy. Washington County, Utah will not be held responsible for any claims, losses or damages resulting from the use of this map.

752.3 Feet

0 376.17 752.3 Feet