

# **State of the District**

## **Southwest Mosquito Abatement & Control District- as of February 2026**

**Purpose:** To answer these three questions:

- 1- Where are we now?
- 2- What has been improved?
- 3- Where are we going?

### **Categories and Topics of discussion:**

- 1- SWMACD Building/ Capital Improvements
  - a. Adding cabinets and counters with sink in shop.
  - b. Plans to replace carpeted floors in the office.
  - c. Landscaping improvements.
- 2- Vehicles
  - a. Possibly purchase 2 trucks (replace oldest which is the 2015 Silverado)
  - b. New motor in 2019 Silverado in 2025.
  - c. Topper for trucks with shorter bed.
- 3- Treatment systems
  - a. New products- Similarv for catch basins & VectoBac WDG for WALs blower.
  - b. Resistance testing for adult mosquitoes.
  - c. 6.3 gallons total of adulticide used for fogging over 245 acres in 2025.
- 4- Surveillance
  - a. Sunrise GIS updates- Aedes aegypti layer improvements.
  - b. Hired Kirk Jones as the Public Education Administrator in January 2026.
  - c. Aedes aegypti found in St. George, Springdale, Santa Clara, Hurricane, and Washington.
- 5- Lab
  - a. 3 positive WNV mosquito pools and 0 positive SLE pools found in 2025.
  - b. Aedes aegypti reared to lay eggs for genetic testing.
  - c. Soil testing for Aedes aegypti.
- 6- Office
  - a. Added Full-time, benefited Public Education Administrator position.
  - b. Preparing for the full financial audit for 2025.
  - c. Miscellaneous office:
    - i. Fall conferences attended in 2025: UMAA, UASD, One Health.
    - ii. 2026 Spring conferences: WCMVCA, AMCA, RaHP VEC, UMAA spring workshop.
- 7- Education/training
  - a. 10+ STEM events planned.
  - b. 2 UTU student projects for better operational efficiency.
  - c. Annabel Anyang – comic book: Southwest Most Wanted.

# Mosquito Distribution Chart- 2025

Trapping Locations	Mosquito Species																Positive WNV/WEE/SLE				
	<i>Ae. aegypti</i>	<i>Ae. vexans</i>	<i>An. franciscanus</i>	<i>An. freeborni</i>	<i>Cu. incidens</i>	<i>Cu. inornata</i>	<i>Cx. apicalis</i>	<i>Cx. erythrorhox</i>	<i>Cx. Quinquesciatus</i>	<i>Cx. tarsalis</i>	<i>Cx. thriambus</i>	<i>Oc. dorsalis</i>	<i>Oc. epactius</i>	<i>Oc. increpitus</i>	<i>Oc. nigromaculis</i>	<i>Oc. pullatus</i>		<i>Oc. varipalpus</i>	<i>Or. signifera</i>	<i>Ps. signipennis</i>	Totals
<b>St. George</b>																					16113
Dr. Free Clinic SGE002	1	1	7		41		1846	11	107	2										2016	
Springs Park SGE003	2	3	47		34		565	6	2848	1										3506	
Springs River SGE003-2	1	1	34		15		446	14	1990											2501	
Halfway Wash SGE007		1			4		622	5	23	1										656	
Ft. Pierce N. SGE008-2		1	1		2		12	9	374											399	
Radio Towers SGE009	17				2		5	2	117											143	
Radio Towers 2 SGE009-2	28				47		93	9	436	1								1		615	
North Dixie Dr. SGE013	1				17		923	35	85	1			1							1063	
Nature Park SGE014	6	5	9		53		23	7	317	85										505	
Little Valley SGE015	1				2		41	41	202	1										288	
Rio Virgin Estates SGE016				35	1		4	7	64											111	
Middleton SGE017	1		1		35		2812	35	119											3003	
Sunriver SGE018							1		52											53	
Mall Drive Bridge	1	1	28		4		83	8	1129											1254	
Extras & Service Requests																				0	
<b>Washington</b>																					7083
Animal Shelter WAS001	7		5				4	2	28											46	
PV Estates WAS002	3	2	14		12		19	11	347	1										409	
Green Springs WAS005							61	3	14											78	
East Boiler WAS006					1		16	1	8											26	
Landfill Rd. WAS008	146	2	22		81		585	5	187	8										1036	
Diversion Dam WAS009					1				3											4	
Rock Spring WAS011	3261	27	232		91		944	1	859	69										5484	
<b>Hurricane</b>																					548
End Of Road HUR007		27	2		8		1		35				6							79	
Tractor Supply HUR008	291	1		1	22			5	39	3										362	
Prob. Area 3000 S. HUR009			51		18				23				8					7		107	
Extras & Service Requests																				0	
<b>Santa Clara</b>																					1272
Arboretum SCL001			1	40	13		16	2	124											196	
Lava Flow Wash SCL004	1		26		19		783	7	46	1										883	
Santa Clara River SCL005			14		4		91		84											193	
Extras & Service Requests																				0	
<b>Ivins</b>																					1715
Fire Lake IVI003		33	27		11		1169		364	111										1715	
<b>Leeds</b>																					76
Jackson Rd. LEE003		4	4	2	2		32		26	2			2	2						76	
<b>LaVerkin</b>																					399
Confluence Park LAV001	26	159	11		28		1		172	2										399	
<b>Toquerville</b>																					18
Toquerville Park TOQ002									18											18	
<b>Virgin</b>																					1088
Sierra Bella VIR008	11	3	3	4	89		870		102	6										1088	
<b>Outlying areas</b>																					752
*Apple Valley APV001									15											15	
*Enterprise ENT003		7	1						8											16	
*Hildale HIL002		2	1		1				9											13	
*New Harmony NHA002- NHA003	6	30	58	7	26		55		44			2								228	
*Rockville ROC002-ROC004	2		2	1	1		2	1	20	2										30	
Springdale SPR002		6	15	31	54	241	4	1	33	12		2								399	
Extras & Service Requests		2	1				5		43											51	
<b>Service Requests</b>																					443
Extras & Service Requests	154			1	1		1	267	19											443	
<b>Totals</b>	156	3809	373	638	48	739	241	12135	495	10533	309	0	0	7	16	0	0	0	8	29507	3

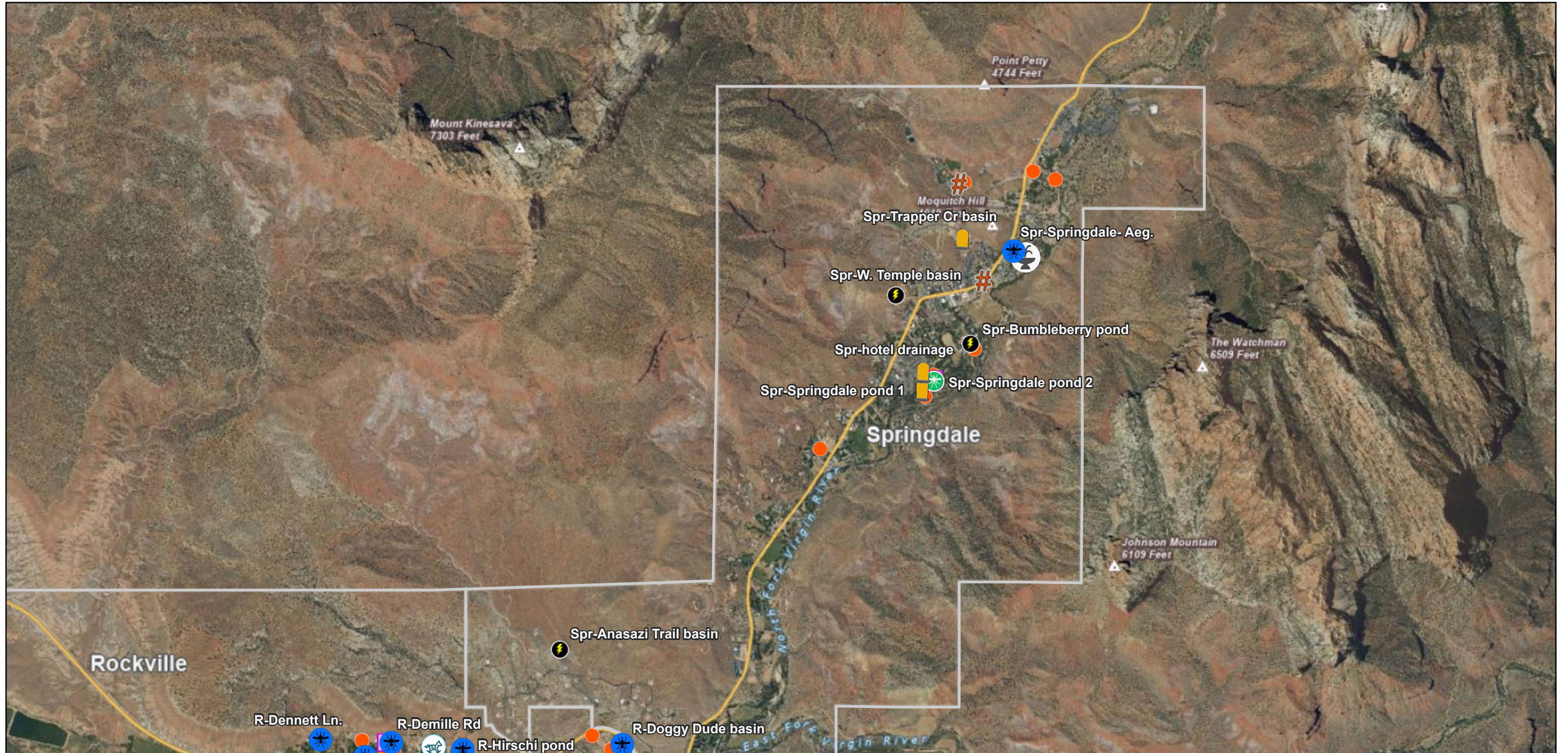
Notes: All amounts include males and females collected from all trap types in each location for the entire year.

\*Traps were set on alternating weeks or temporary sites

Color Key for amounts of mosquitoes




1-9	100-199
10-24	200-499
25-49	500-999
50-99	1000 +


# SWMACD Mosquito Map



5/12/2026, 9:56:11 AM

Treatment Sites

-  Heavy Rain
-  Non Priority
-  Regular Monitoring

 Trough

 Non Active

Trapping Sites


 Yes

Comment Points

 Point

 Storm Water

Aedes Aegypti Comment Points

 Ornamental Pond - Inactive

 County Boundary

 Municipalities

