

ORDINANCE NO. 26-06

AN ORDINANCE DISSOLVING THE CHERRY STREET NEIGHBORHOOD DEVELOPMENT PROJECT AREA

WHEREAS, the Murray City Municipal Council ("Council") and the Redevelopment Agency of Murray City held a joint public hearing on July 16, 1991, to consider adopting the Cherry Street Neighborhood Development Plan; and

WHEREAS, the Council by Ordinance Number 91-20 adopted a redevelopment plan entitled "Cherry Street Neighborhood Development Plan" and described the boundaries of the project area, entitled "Cherry Street Neighborhood Development Project Area; and

WHEREAS, the project area is no longer collecting tax increment, RDA funds for the project area have been expended, and the RDA has determined that further activity is no longer necessary in the Cherry Street Neighborhood Development Project Area; and

WHEREAS, Utah Code § 17C-1-702(1)(b) provides that a project area remains in existence until, 1) the RDA adopts a resolution dissolving the project area, and 2) the city council adopts an ordinance dissolving the project area; and

WHEREAS, the RDA has adopted a resolution dissolving the Project Area; and

WHEREAS, the Council desires to dissolve the Cherry Street Neighborhood Development Project Area.

NOW, THEREFORE, BE IT ORDAINED by the Murray City Municipal Council as follows:

1. The Murray City Municipal Council finds that the Redevelopment Agency of Murray City has adopted a resolution dissolving the project area.

2. The Murray City Municipal Council hereby dissolves the Cherry Street Neighborhood Development Project Area, the respective boundaries of which are shown and described on the legal description and map attached hereto as Exhibit A and incorporated herein by this reference.

3. Pursuant to Utah Code §17C-1-702(3), within thirty (30) days after the effective date, the Mayor is hereby authorized and directed to take all actions necessary to dissolve the project area including the following:

a. submit a copy of the ordinance to the Salt Lake County Recorder and

b. mail or electronically submit a copy of the ordinance to the Salt Lake County Auditor, the State Tax Commission, the State Board of Education, and each taxing entity that levies or imposes a tax on property within the dissolved project area.

4. This ordinance takes effect on April 28, 2026, and after its publication.

DATED this 21<sup>st</sup> day of April 2026.



MURRAY CITY MUNICIPAL COUNCIL

A handwritten signature in black ink, appearing to read "Adam Hock", is written over a horizontal line.

Adam Hock, Chair

ATTEST:

A handwritten signature in black ink, appearing to read "Brooke Smith", is written over a horizontal line.

Brooke Smith, City Recorder

Transmitted to the Office of the Mayor of Murray City on this 1<sup>st</sup> day of May, 2026.

MAYOR'S ACTION: Approved

DATED this 1 day of MAY, 2026.

Brett A. Hales  
Brett A. Hales, Mayor

ATTEST:

Brooke Smith  
Brooke Smith, City Recorder

CERTIFICATE OF PUBLICATION

I hereby certify that this Ordinance, or a summary hereof, was published according to law on the 5<sup>th</sup> day of May, 2026.

Brooke Smith  
Brooke Smith, City Recorder

**EXHIBIT A**

**CHERRY STREET NEIGHBORHOOD DEVELOPMENT PROJECT AREA**

EXHIBIT A  
(Cherry Street Neighborhood Development Plan)

Beginning at a point West 673.20 feet and North 435.60 feet from the Southeast Corner of Lot 7, Section 1, Township 2 South, Range 1 West, Salt Lake Base and Meridian; running thence South 433.424 feet; thence East 212.52 feet; thence South 595.98 feet; thence N85°30'W 163.02 feet; thence S05°30'W 472.56 feet; thence South 254.6 feet; thence West 65.82 feet; thence N89°48'W 65.95 feet; thence N89°50'W 141.3 feet; thence North 125.0 feet; thence West 150.0 feet; thence North 134.4 feet; thence S87°45'E 89.5 feet; thence N03°24'E 174.8 feet; thence S84°30'E 33.0 feet; thence S63°30'E 152.46 feet; thence N05°30'E 363.0 feet; thence N85°30'W 143.88 feet; thence N05°15'E 29.09 feet; thence West 104.28 feet; thence N00°05'30"W 217.59 feet; thence N89°41'10"W. 67.338 feet; thence N00°10'E 163.928 feet; thence N89°46'E 160.0 feet; thence N0°10'E 381.834 feet; thence West 148.81 feet; thence North 115.31 feet; thence N81°38'W 118.68 feet; thence North 83.32 feet; thence East 531.83 feet more or less to the point of beginning.

4500 SOUTH

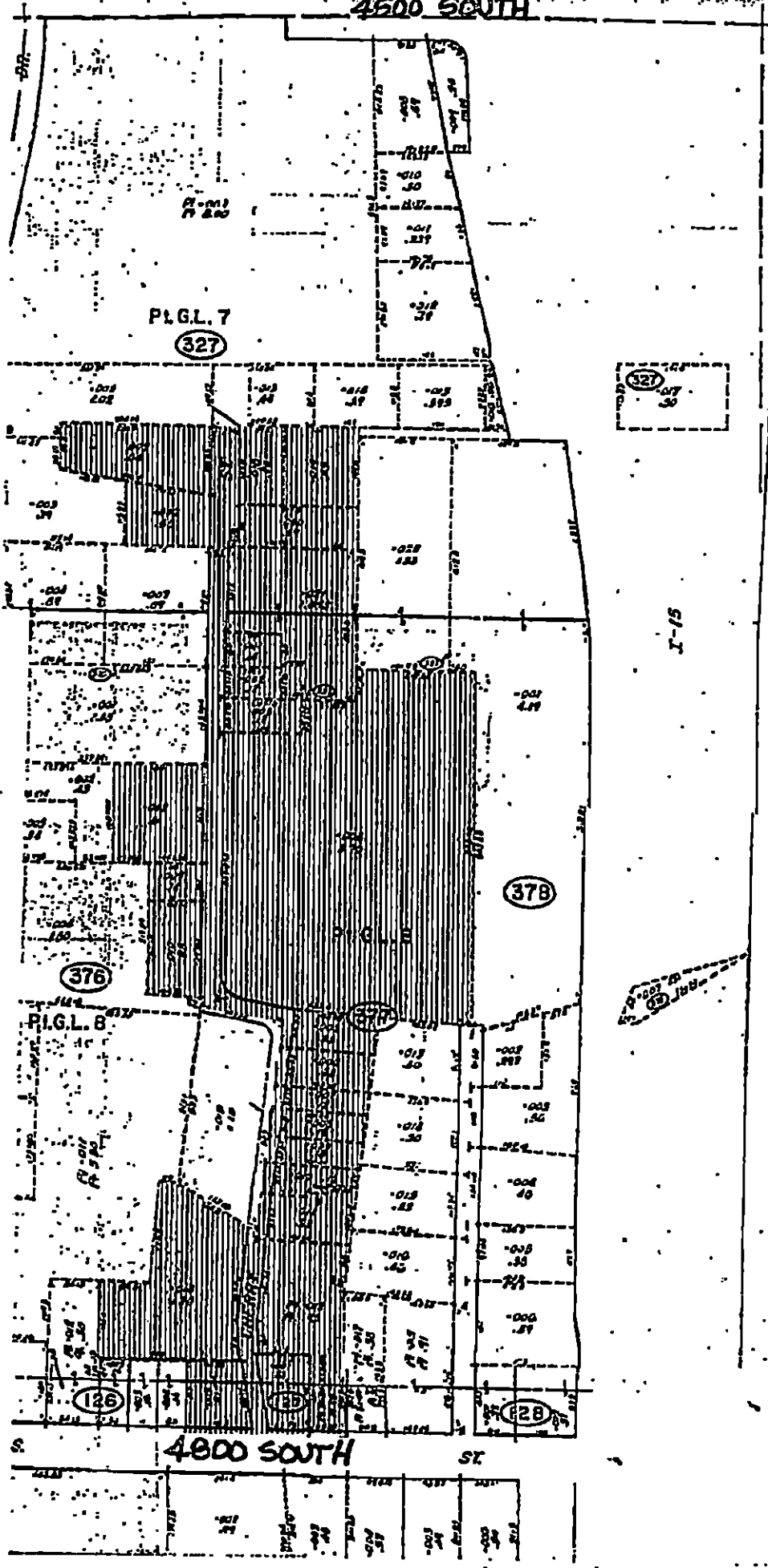


FIG. 7

327

327

I-15

378

376

FIG. 8

377

126

127

128

4800 SOUTH

ST

EXHIBIT A

CHERRY STREET NEIGHBORHOOD DEVELOPMENT PROJECT AREA

5/1  
Copy  
Waiting for  
Mayor  
Signature

EXHIBIT A  
(Cherry Street Neighborhood Development Plan)

Beginning at a point West 673.20 feet and North 435.60 feet from the Southeast Corner of Lot 7, Section 1, Township 2 South, Range 1 West, Salt Lake Base and Meridian; running thence South 433.424 feet; thence East 212.52 feet; thence South 595.98 feet; thence N85°30'W 163.02 feet; thence S05°30'W 472.56 feet; thence South 254.6 feet; thence West 65.82 feet; thence N89°48'W 65.95 feet; thence N89°50'W 141.3 feet; thence North 125.0 feet; thence West 150.0 feet; thence North 134.4 feet; thence S87°45'E 89.5 feet; thence N03°24'E 174.8 feet; thence S84°30'E 33.0 feet; thence S63°30'E 152.46 feet; thence N05°30'E 363.0 feet; thence N85°30'W 143.88 feet; thence N05°15'E 29.09 feet; thence West 104.28 feet; thence N00°05'30"W 217.59 feet; thence N89°41'10"W 67.338 feet; thence N00°10'E 163.928 feet; thence N89°46'E 160.0 feet; thence N0°10'E 381.834 feet; thence West 148.81 feet; thence North 115.31 feet; thence N81°38'W 118.68 feet; thence North 83.32 feet; thence East 531.83 feet more or less to the point of beginning.

4500 SOUTH

