
NOTICE OF PUBLIC HEARING

WEDNESDAY, MAY 6, 2026 AT 6:00PM
VERNAL CITY HALL - COUNCIL CHAMBERS
374 E MAIN ST, VERNAL UT

Notice is hereby given that the Vernal City Council will hold a public hearing on May 6, 2026, at 6:00 p.m. in the Vernal City Council Chambers, located at 374 East Main Street, Vernal, Utah, to consider the approval of Ordinance 2026-10, approving the annexation of the properties in the “Vernal City – Briar Creek Subdivision, N&E Properties LLC Etal Parcel, and Joseph Parcel Annexation” petition into the boundaries of Vernal City.

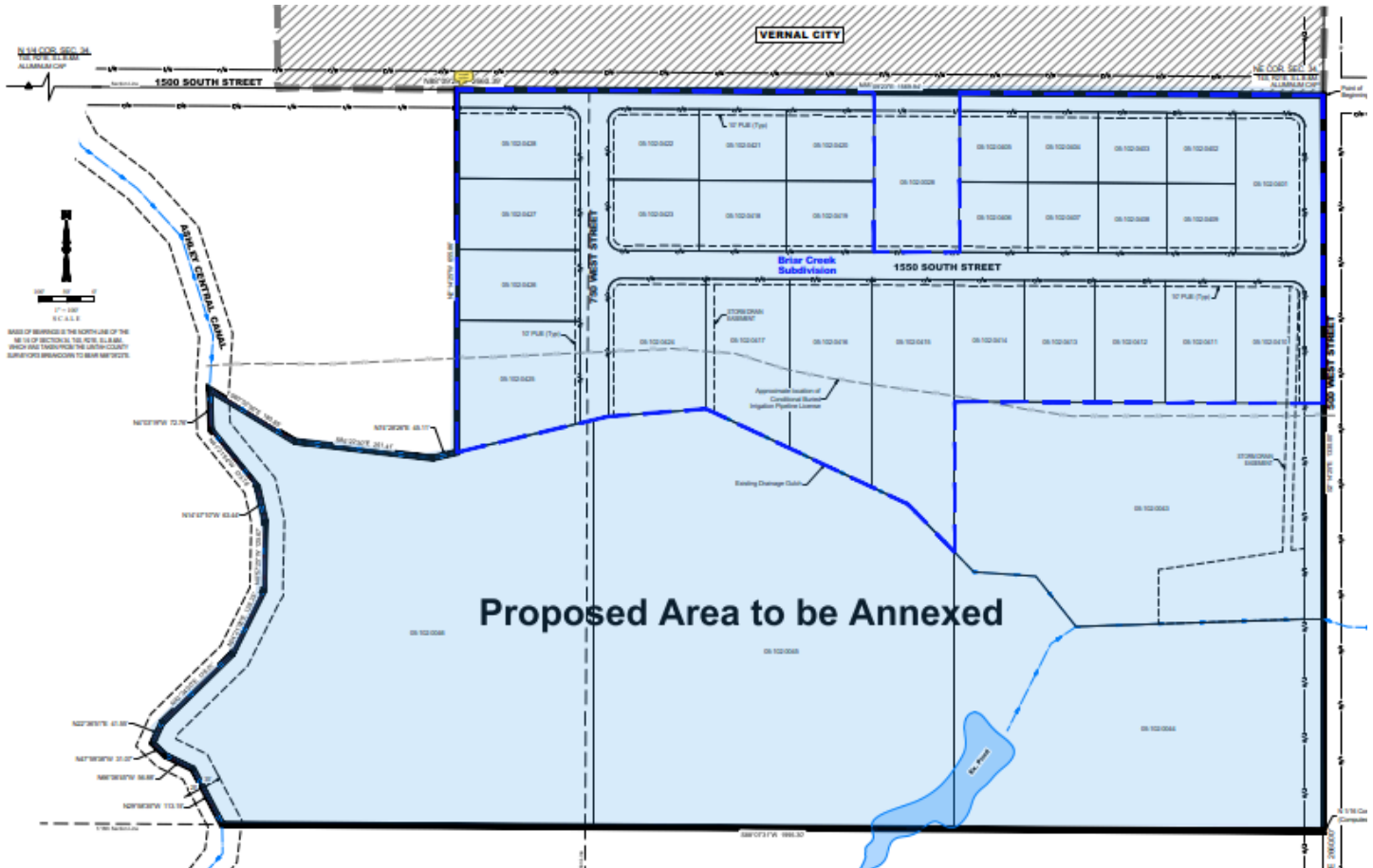
The petition was accepted by Vernal City as required by Utah Code 10-2-405 (1)(a)(i)(B) on February 5, 2026 and the time to protest the annexation has expired. The petition was reviewed by the Boundary Commission, and was recommended for approval with conditions on March 30, 2026.

All persons and public entities having interest in the request for annexation are encouraged to the public hearing and provide comment regarding this request. Written comments may also be submitted prior to the meeting to the Vernal City Recorder, 374 East Main, Vernal, UT 84078. To be included in the public record, written comments should be received no later than May 6, 2026, at 12:00 p.m. Each written objection filed with the municipality will be provided to the municipal legislative body for consideration.

Additional information regarding this application is available for review at the Vernal City offices during regular business hours. If you have any questions, please contact Sara Bell, Vernal City Recorder at (435) 789-2255. In compliance with the Americans with Disabilities Act, individuals requiring special accommodations to participate in this meeting should contact Sara Bell (435) 789-2255 at least five (5) days prior to the hearing.

Posted on the Utah Public Notice Website; and
Posted on the Vernal City Website; and
Posted in conspicuous places within Vernal City on April 24, 2026.
Notice must remain in place through May 7, 2026

Vernal City – Briar Creek Subdivision, N&E Properties LLC Etal Parcel, and Joseph Parcel Annexation



Proposed Properties to be Annexed:

051020028, 655 W 1500 S
 051020043, 1640 S 500 W
 051020044, 1710 S 500 W
 051020045, 687 W 1684 S
 051020046, 811 W 1690 S
 051020401, 516 W 1550 S
 051020402, 529 W 1500 S
 051020403, 541 W 1500 S
 051020404, 553 W 1500 S
 051020405, 565 W 1500 S
 051020406, 564 W 1550 S

051020407, 552 W 1550 S
 051020408, 540 W 1550 S
 051020409, 538 W 1550 S
 051020410, 521 W 1550 S
 051020411, 543 W 1550 S
 051020412, 567 W 1550 S
 051020413, 591 W 1550 S
 051020414, 613 W 1550 S
 051020415, 639 W 1550 S
 051020416, 671 W 1550 S
 051020417, 701 W 1550 S

051020418, 696 W 1500 S
 051020419, 668 W 1150 S
 051020420, 669 W 1500 S
 051020421, 695 W 1500 S
 051020422, Not Assigned
 051020423, Not Assigned
 051020424, 727 W 1550 S
 051020425, 1588 S 750 W
 051020426, 1566 S 750 W
 051020427, 1542 S 750 W
 051020428, Not Assigned