

BOARD OF TRUSTEE'S MEETING

April 16, 2026



Board Meeting Agenda

AGENDA → Items 1–3

MK2

1 - 3 Welcome / Minutes / Upcoming Meetings

PRESENTATIONS → Items 4–9

4 Trust Lands Funds in Action

5 Social Media Minute

6 Public Comment

7 Chair's Report

8 Director's Report

9 Advocate Report

MK1

ACTION ITEMS → Item 10 A–F

10A Board Approval – Land Trusts Protection & Advocacy

10B ML 54715 – OBA - Tyler

10C ML 54716 – OBA - Tyler

10D RNBL 2020 OBA - Chanse

10E ML 54697 – OBA - Chanse

10F Closed Session

Slide 2

MK1 Font for headers is Montserrat.

Marla Kennedy, 2026-04-13T17:49:07.188

MK2 The contrast ratio is incorrect between the green, yellow, and black. You can learn more about it here:

<https://webaim.org/resources/contrastchecker/>

Marla Kennedy, 2026-04-13T17:51:40.754

Items 1 - 3

AGENDA

1. Welcome
2. Approval of Minutes
3. Confirmation of Upcoming Meetings



TLA Board of Trustees - 2026

Item 4

AGENDA

Trust Lands Funds in Action

Marla Kennedy
Communications Director
Trust Lands Administration

[Home](#)



Riverton High School
Principal Rochelle Waite



Riverton High School

Jordan School District

Our Mission Vision and Values

High Levels of Learning for Every Student



**Learning
Driven**



**Service
Minded**



**Community
Oriented**



**Future
Focused**



Strategic Funding Allocation: Investing in Our Future.

Empowered by the School Community Council for Personnel, Technology, & Professional Development.

PERSONNEL: SUPPORT ECOSYSTEM



- Prioritize “high-touch” roles beyond standard instruction.
- Includes Interventionists & Paraprofessionals.
- Provides targeted support for at-risk students.

TECHNOLOGY: CLOSING THE GAP



- Funds directed to seamless digital infrastructure.
- Focus on connectivity and access, not just hardware.
- Ensuring equitable opportunities for all.

PROFESSIONAL DEVELOPMENT: CULTIVATING EXPERTISE



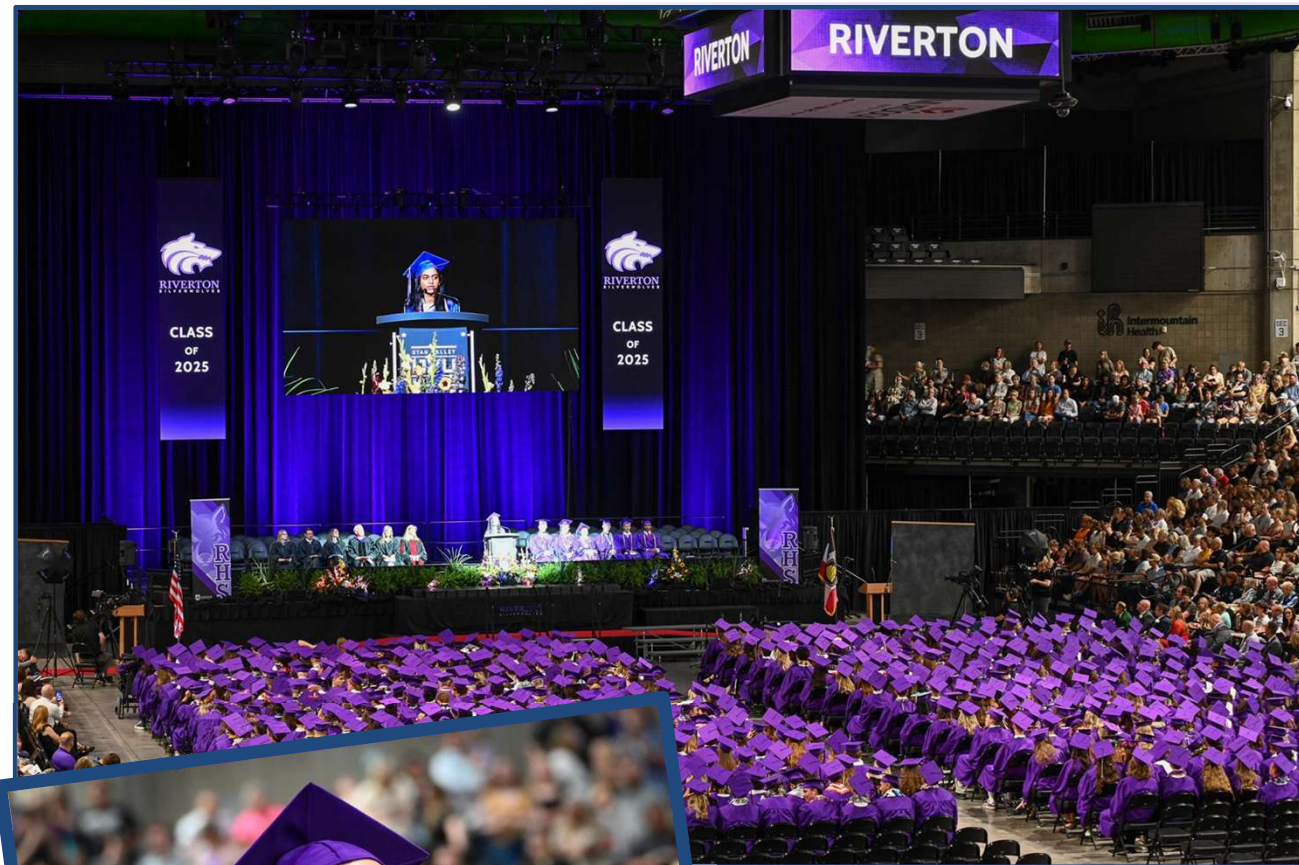
- Maximizing effectiveness of tech and personnel.
- Continuous, data-informed training.
- Benefits both students and staff.



Riverton High School Graduates
- Future Ready.









THANK YOU.

Social Media

Social Media Minute



Facebook



YouTube



Instagram



WhatsApp



TikTok



WeChat



Telegram



Messenger



Snapchat

Item 6

AGENDA

Public Comment

Trust Lands welcomes comments from the county advisory committee, the public, and other interested parties.

The Board sets aside 15 minutes at each board meeting to hear from anyone wishing to speak. Each presenter is allowed one opportunity and has up to three (3) minutes for remarks. Any member of the public participating electronically who desires to comment shall use the “raise hand” feature during the Zoom meeting.

The public comment segment of the board meeting is not the time for a question-and-answer discussion. Trust Lands staff is available for dialogue outside of board meetings.

Item 7

AGENDA

Chair's Report

Tiffany A. James

Chairwoman
Trust Lands Administration Board of Trustees

[Home](#)



Item 8

AGENDA

Director's Report

Michelle E. McConkie

Executive Director
Trust Lands Administration

[Home](#)



Item 9

AGENDA

Advocate Report

Jessie Stuart, Interim Director, and Liz Mumford, Program Manager

Utah Land and Trusts Protection and Advocacy Office

[Home](#)



**Utah Land Trusts
Protection &
Advocacy Office**

Item 10A

AGENDA

Board Approval of Land Trusts Protection and Advocacy Committee Member

[Home](#)



Range Creek

Item 10B

AGENDA

**Proposed Metalliferous Minerals
Exploration Agreement with Option
to Lease (ML 54715 – OBA) with
BCM Resources Corp.**

Tyler Wiseman, PG
Geoscientist and Lease Manager
Energy and Minerals

[Home](#)

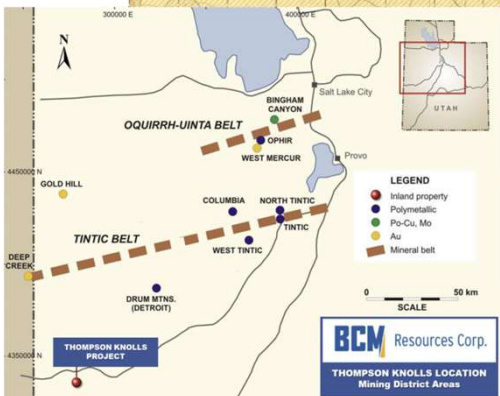
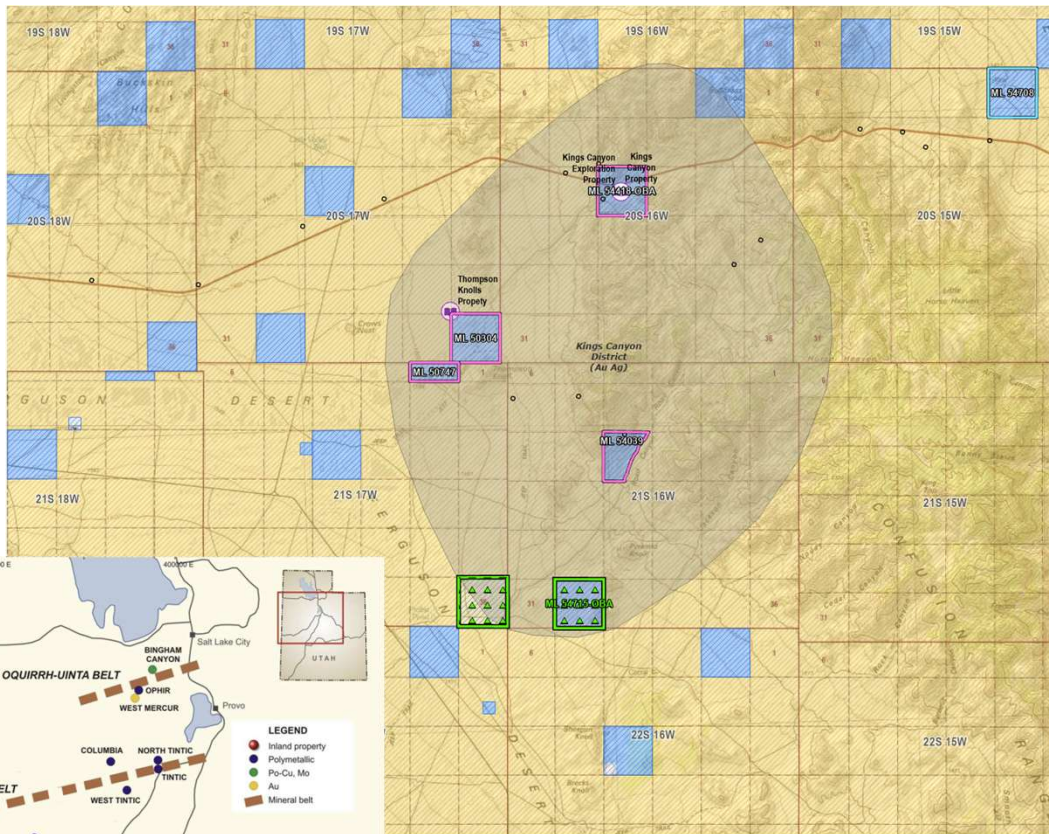


Materion Beryllium Pit

Ferguson Valley Project

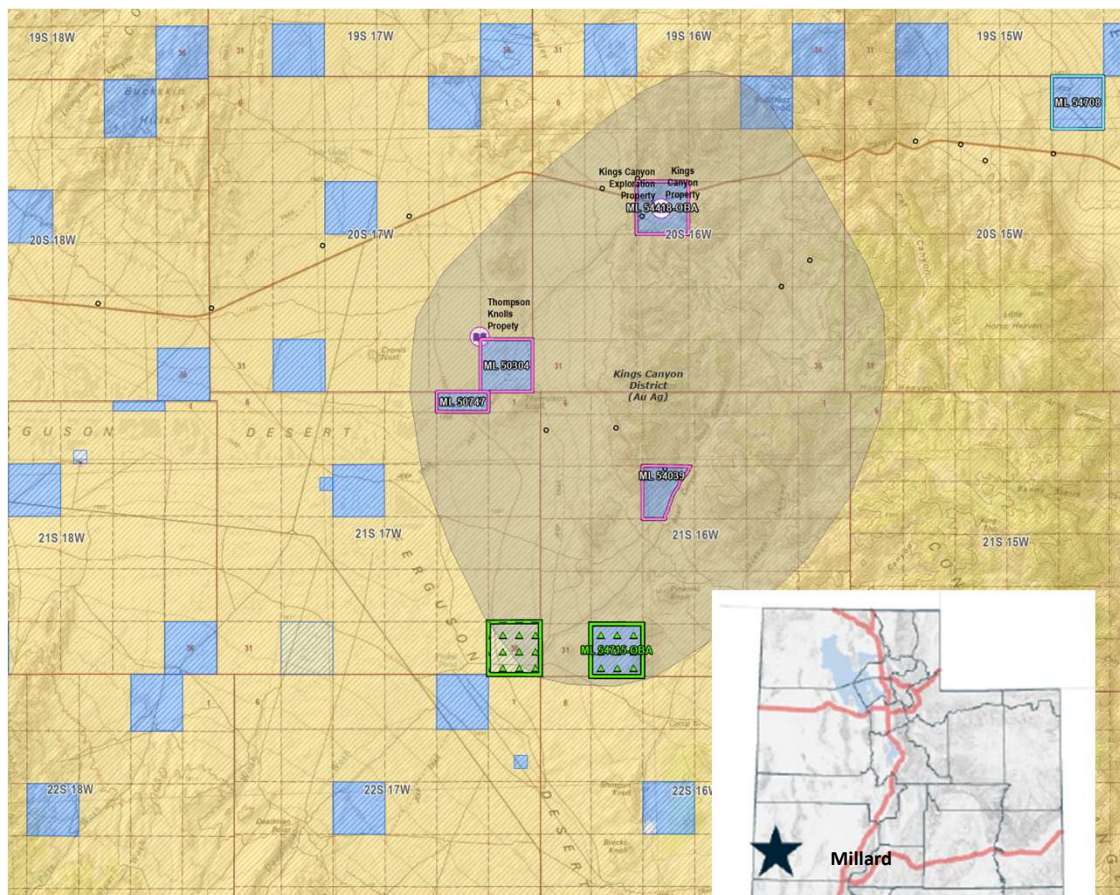
Geologic Overview

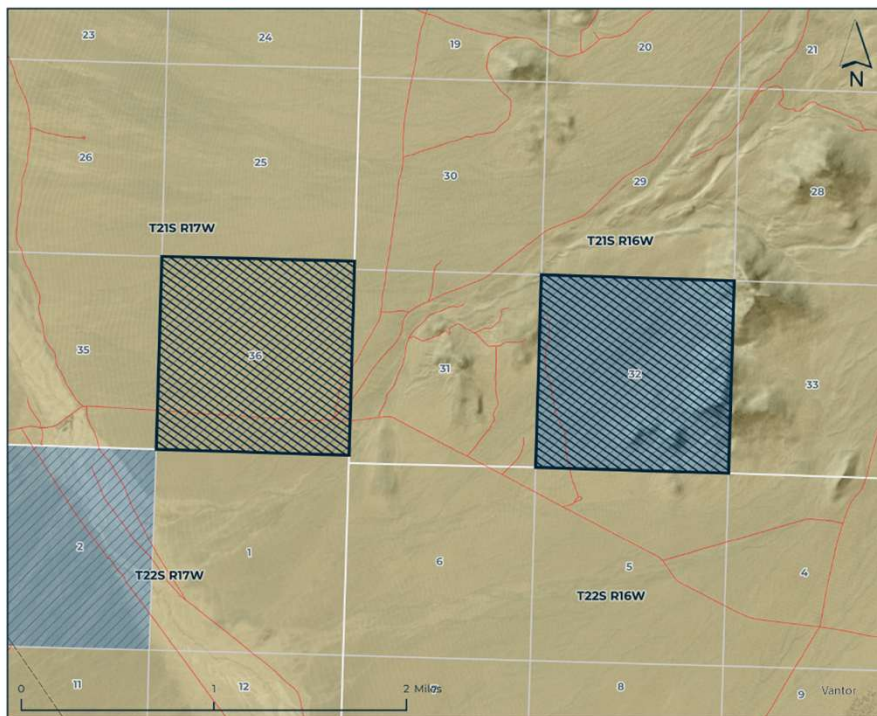
- Basin and Range Province
- Confusion Range
 - Numerous Au-bearing jasperoid outcroppings
- Kings Canyon Mining District
 - Emerging precious metals district
 - Carlin-type distal disseminated Au-Ag deposits
- Thompson Knolls Property
 - Potential porphyry Cu-Mo-Au system
 - Ongoing exploration to define the extent of the resource



Overview & Proposed Terms

- ❑ T21S R16-17W, Millard County
- ❑ 1,280.00 total acres (100% Schools)
- ❑ Five-year Exploration Agreement with work commitments
- ❑ Option to Lease (Ten-year Primary Term) contingent on completion of work commitments, annual progress reports, and NI 43-101 technical report
- ❑ \$5,000.00 bonus payment
- ❑ Exploration and Primary Term Annual rental at \$3.00 per acre
- ❑ 4% gross royalty on non-fissionable metalliferous minerals





Mineral Lease No. 54715-OBA - Metalliferous Minerals

Trust Lands Minerals Ownership

Diagonal lines All minerals

Land Ownership and Administration

Yellow Bureau of Land Management

Blue State Trust Lands



Data represented on this map is for REFERENCE USE ONLY and is not suitable for legal, engineering, or surveying purposes. Users of this information should review or consult the primary data and information sources to ascertain the usability of the information. The Trust Lands Administration provides this data in good faith and shall in no event be liable for any incorrect results, or any special, indirect or consequential damages to any party, arising out of or in connection with the use or the inability to use the data hereon. Land parcels, lease boundaries and associated Trust Lands Administration data layers may have been adjusted to allow for visual "best fit." The Surface Ownership Land Status data (if present) are maintained by the Trust Lands Administration to reflect current trust lands status and surface ownership. Lakes, rivers, streams, highways, roads, county and state boundaries are distributed by the Utah Geospatial Resource Center and/or other sources as specified. Contour lines (if present) were generated from USGS 10 meter DEM. Please Note: While the Trust Lands Administration seeks to verify data for accuracy and content, discrepancies may exist within the data. Acquiring the most updated Trust Lands Administration ownership GIS data may require contacting the GIS staff directly: 801-538-5100 or TLA-GIS@utah.gov. The Trust Lands Administration GIS department welcomes your comments and concerns regarding the data and will attempt to resolve issues as they are brought to our attention. Produced: March 13, 2026 - katestaley

Rationale & Benefit to TLA

- BCM Resources Corp has an experienced technical team with a successful track record of mineral exploration at their nearby Thompson Knolls Project with access to sufficient capital to complete the negotiated exploration program.
- The company has staked hundreds of mining claims with the BLM on adjacent federal lands within the district.
- The value of this OBA to the Trust is in the dedicated exploration work commitments on the land.

This OBA proposal was reviewed by the Energy & Minerals Committee on March 31, 2026.

Questions?

Thank You

The agency requests that the Board approve the OBA and offers the following proposed motion:

“I move to approve ML 54715 - OBA on the terms set forth in the Board Memorandum and to have the agency take all further actions necessary to finalize the transaction.”

Item 10C

AGENDA

**Proposed Metalliferous Minerals
Exploration Agreement with
Option to Lease (ML 54716 – OBA)
with BCM Resources Corp.**

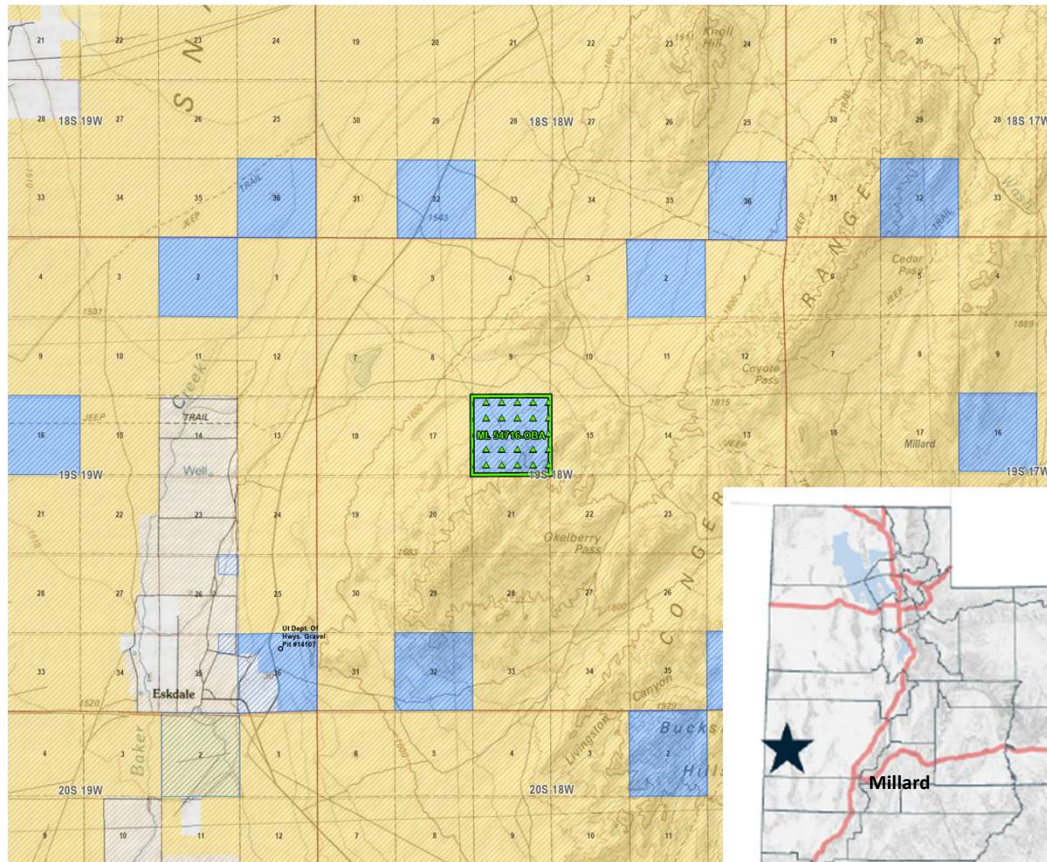
Tyler Wiseman, PG
Geoscientist and Lease Manager
Energy and Minerals

[Home](#)



Materion Beryllium Pit

Snake Valley Project

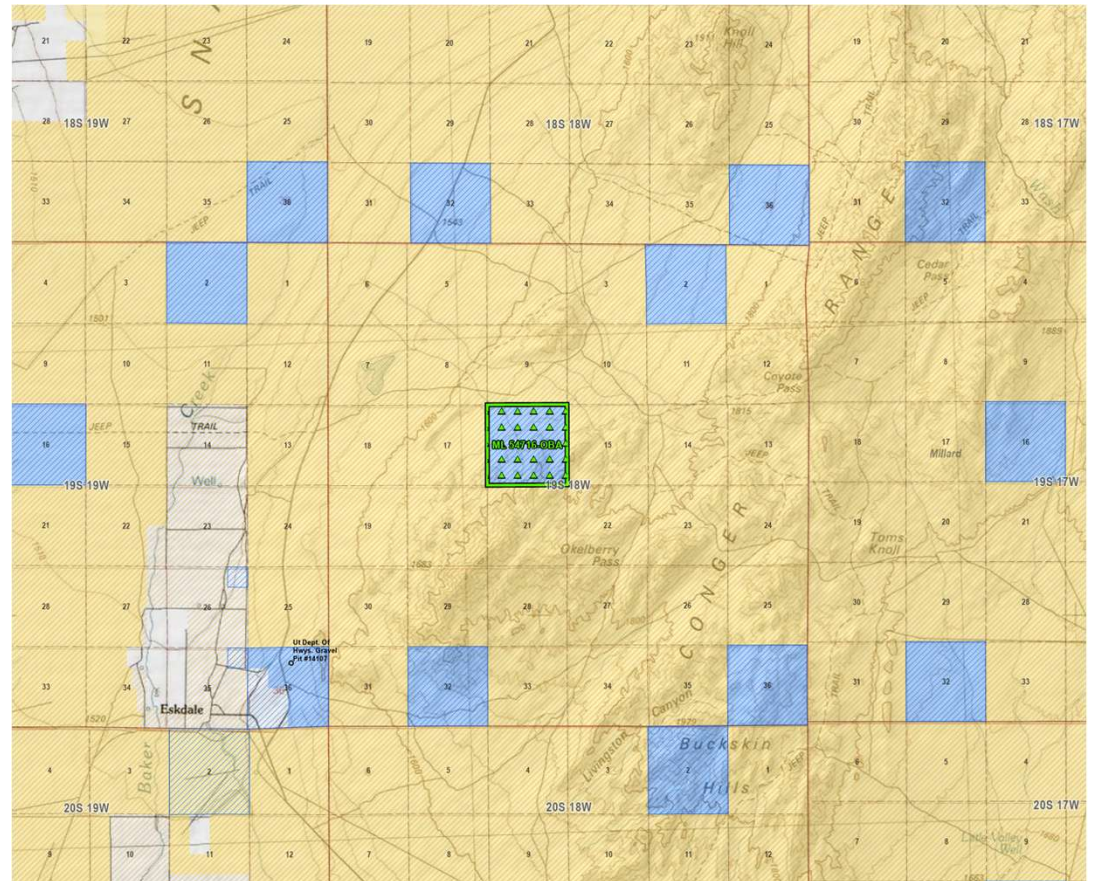


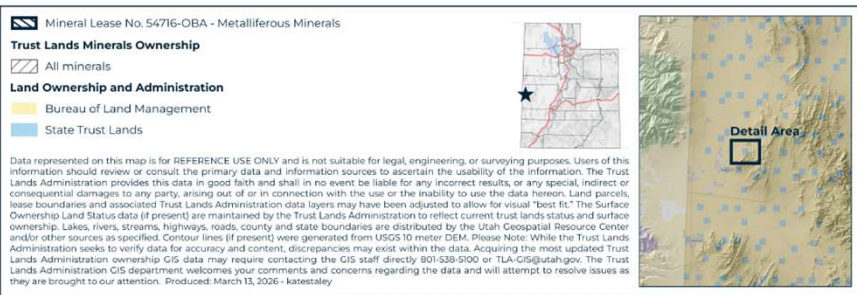
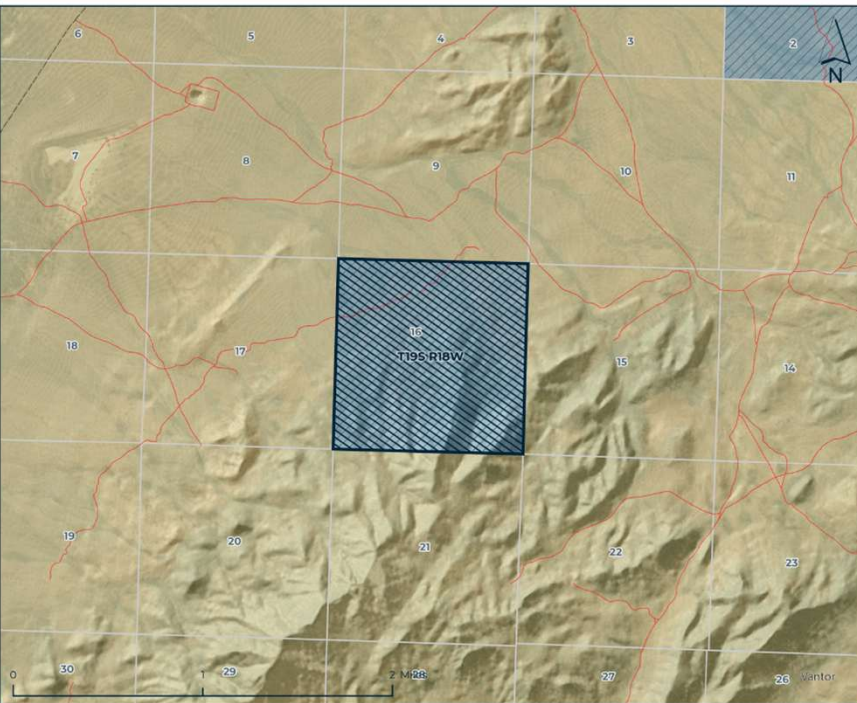
Geologic Overview

- Basin and Range Province
- Confusion Range
 - Numerous Au-bearing jasperoid outcroppings
 - Kings Canyon Carlin-type Au-Ag deposits
 - Thompson Knolls Cu-Au-Mo porphyry(?)
- Snake Valley/Conger Range
 - Virgin ground, high-risk greenfield exploration
 - Positive geochemical anomaly to warrant further exploration
 - Reconnaissance phase indicates clay alteration, Fe oxidation, antimony occurrence

Overview & Proposed Terms

- ❑ T19S R18W, Millard County
- ❑ 640.00 total acres (100% Schools)
- ❑ Five-year Exploration Agreement with work commitments
- ❑ Option to Lease (Ten-year Primary Term) contingent on completion of work commitments, annual progress reports, and NI 43-101 technical report
- ❑ \$5,000.00 bonus payment
- ❑ Exploration and Primary Term Annual rental at \$3.00 per acre
- ❑ 4% gross royalty on non-fissionable metalliferous minerals





Rationale & Benefit to TLA

- BCM Resources Corp has an experienced technical team with a successful track record of mineral exploration at their nearby Thompson Knolls Project with access to sufficient capital to complete the negotiated exploration program.
- The company controls the adjacent federal land surrounding Section 16 through unpatented mining claims with the BLM.
- The value of this OBA to the Trust is in the dedicated exploration work commitments on the land.

This OBA proposal was reviewed by the Energy & Minerals Committee on March 31, 2026.

Questions?

Thank You

The agency requests that the Board approve the OBA and offers the following proposed motion:

“I move to approve ML 54716 - OBA on the terms set forth in the Board Memorandum and to have the agency take all further actions necessary to finalize the transaction.”

Item 10D

AGENDA

Proposed Geothermal Exploration Agreement with Option to Lease (RNBL 2020 - OBA) with Prometheus Energy Group, LLC

Chanse Rinderknecht
Geoscientist and Lease Manager
Energy and Minerals

[Home](#)



Sunrise pumpjack



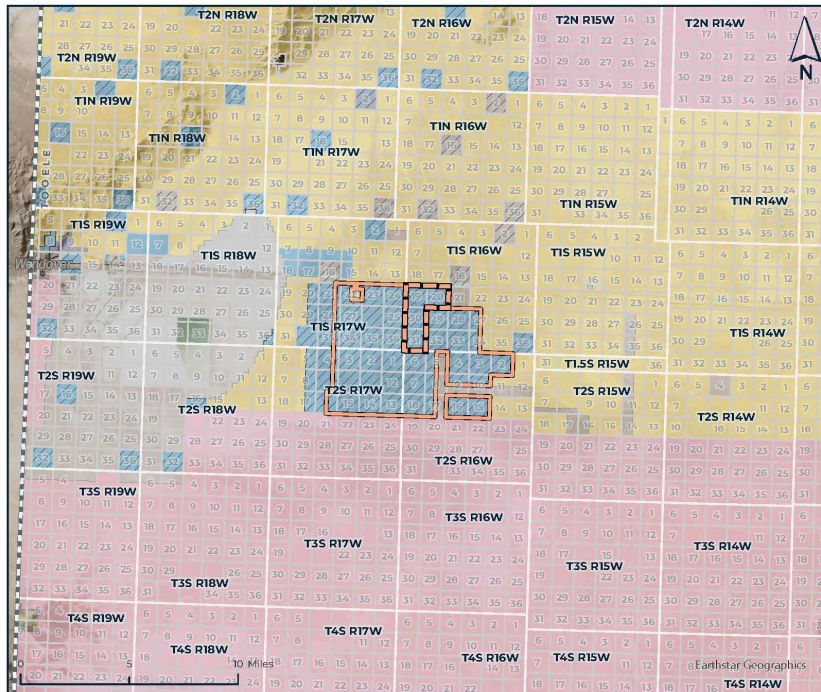
SUPPORTING UTAH SCHOOLS AND INSTITUTIONS

Renewable Contract No. 2020

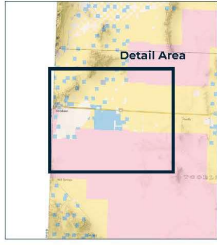
Within T1/2S R16/17W SLB&M

Size - 29,913.46 Acres

Tooele County

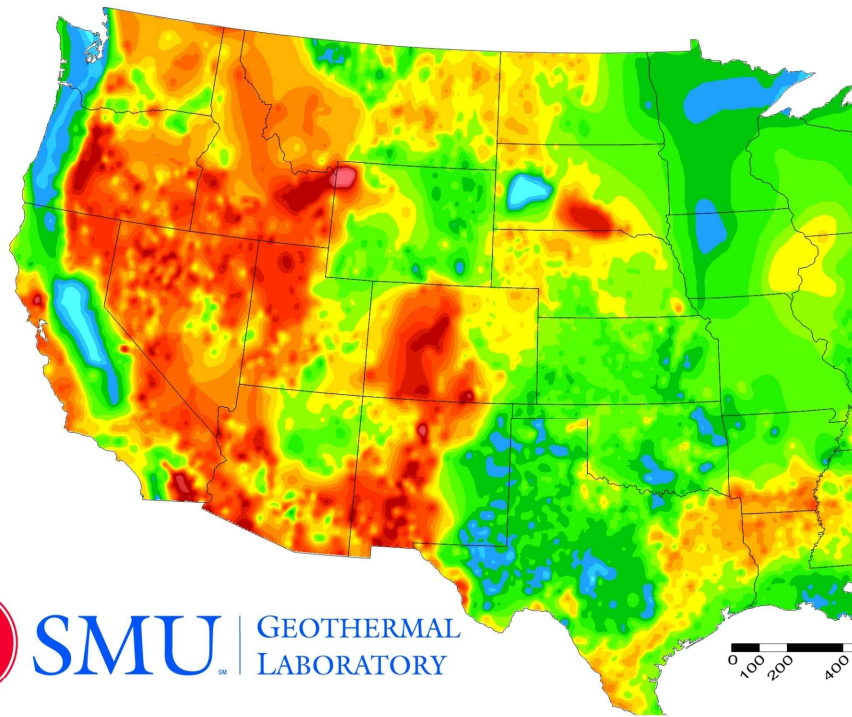


- Renewable Contract No. 2020
- Renewable Contract 2020 Depth Severance
- Land Ownership and Administration**
- Bureau of Land Management
- Military Reservations and Corps of Engineers
- Private
- State Trust Lands
- State Parks and Recreation
- State Wildlife Reserve/Management Area
- Other State
- Trust Lands Minerals Ownership**
- All minerals
- Partial minerals
- County Line



Data represented on this map is for REFERENCE USE ONLY and is not suitable for legal, engineering, or surveying purposes. Users of this information should review or consult the primary data and information sources to ascertain the usability of the information. The Trust Lands Administration provides this data in good faith and shall in no event be liable for any incorrect results, or any special, indirect or consequential damages to any party, arising out of or in connection with the use or the inability to use the data hereon. Land parcels, lease boundaries and associated Trust Lands Administration data layers may have been adjusted to allow for visual best fit. The Surface Ownership and Land Status data (if present) are maintained by the Trust Lands Administration to reflect current trust lands status and surface ownership. Lakes, rivers, streams, highways, roads, county and state boundaries are distributed by the Utah Geospatial Resource Center and/or other sources as specified. Contour lines (if present) were generated from USGS 10 meter DEM. Please Note: While the Trust Lands Administration seeks to verify data for accuracy and content, discrepancies may exist within the data. Acquiring the most updated Trust Lands Administration ownership GIS data may require contacting the GIS staff directly 801-639-9300 or TLA-GIS@utah.gov. The Trust Lands Administration GIS department welcomes your comments and concerns regarding the data and will attempt to resolve issues as they are brought to our attention. Produced: March 25, 2026 - richolawilcox

SMU Geothermal Laboratory Heat Flow Map of the Conterminous United States, 2011



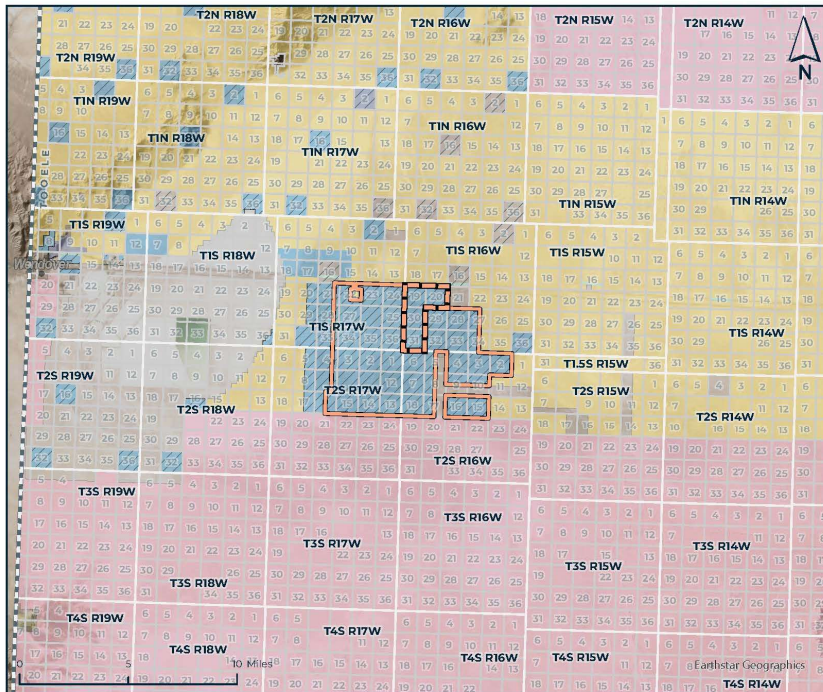
Blackwell, David, M. Richards, Z. Frone, J. Batir, A. Ruzo, R. Dingwall, and M. Williams 2011, Temperature at depth maps for the conterminous US and geothermal resource estimates, *GRC Transactions*, 35

Area

- Eastern margin of the Basin and Range geologic province
- The lithosphere is being stretched and thinned resulting in a classic Horst and Graben geomorphology
- Bottom hole temperature in Alpha Minerals #1 well 157 °F at ~4,300 ft.

Prometheus Background

- Prometheus technical team comes from an oil & gas background developing fields in Oklahoma and Utah
- First target emphasizes naturally permeable fault systems that utilize very little water consumption and minimal induced seismicity risks
- 2nd phase is to develop an EGS system in ultra-tight carbonate



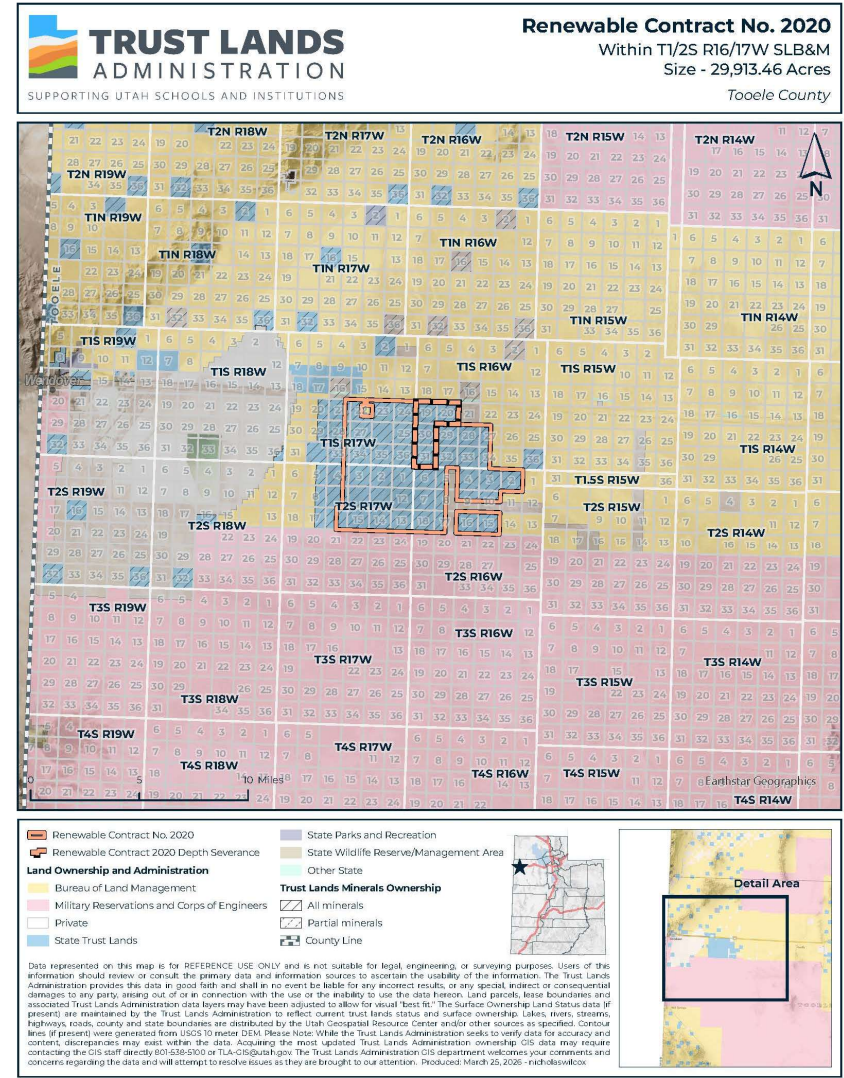
OBA Terms

Exploration Agreement Payment

Option Period	Option Payments
Option Year 1	\$1 /acre
Option Year 2	\$2 /acre
Option Year 3	\$3 /acre
Option Year 4	\$4 /acre
Option Year 5	\$5 /acre

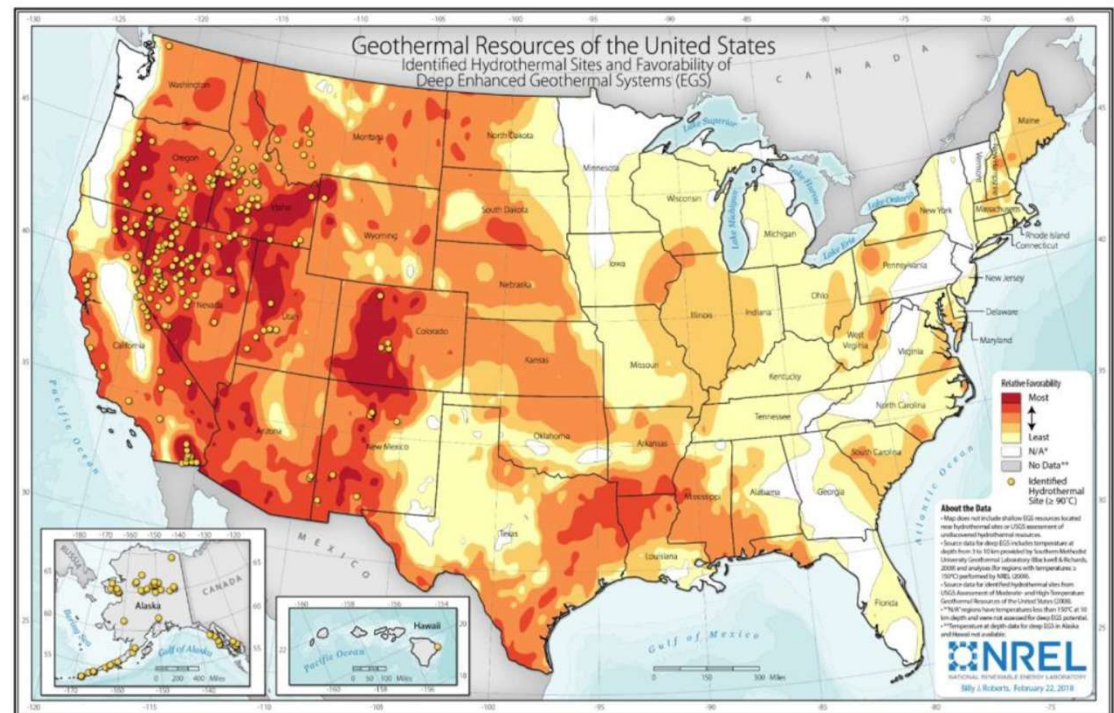
Exploration Agreement POD

- Prometheus will submit a plan of development and provide year end reports
- Very in-depth plan of development includes subsurface geologic studies
- Main focus is drilling deep exploratory well
- Prometheus has a project schedule in place that outlines geologic studies, drilling, and permitting



OBA Terms

- Initial term of 10 years from effective date
- If lessee is producing geothermal resources in paying quantities, the lease will continue for an additional 99 years
- Adjustment of economic terms can occur one year prior to the end of a PPA
- Advanced Minimum Royalty of \$5.00/acre
- **Production Royalties**
- Power Generation 2.5% for first five years
- Power Generation 3.5% thereafter

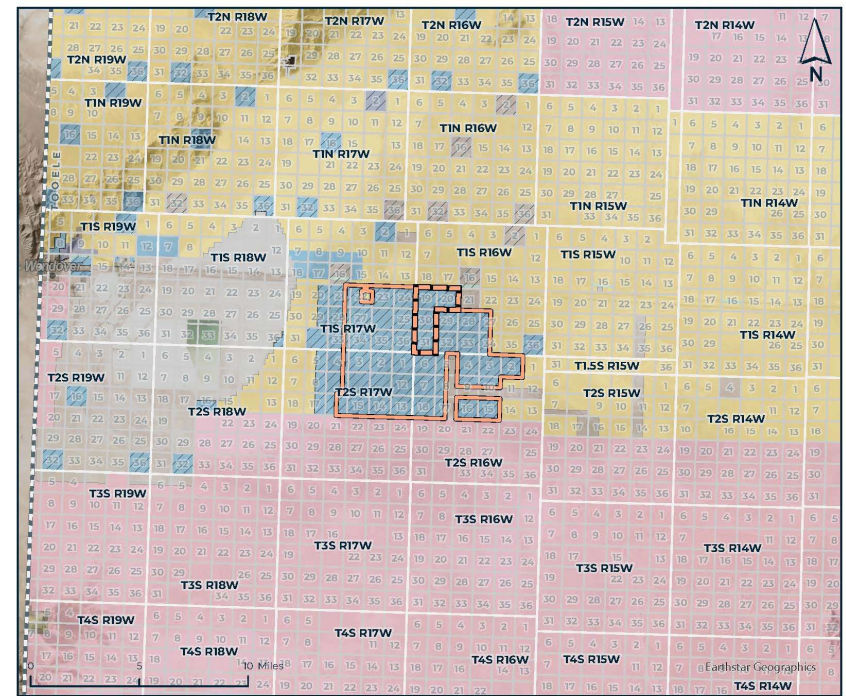


Benefits to TLA

- Prometheus is committed to producing in-depth geologic and reservoir studies
- Prometheus Energy Group is determined to learn with the drill bit
- Outside the normal geothermal fairway

TRUST LANDS ADMINISTRATION
SUPPORTING UTAH SCHOOLS AND INSTITUTIONS

Renewable Contract No. 2020
Within T1/2S R16/17W SLB&M
Size - 29,913.46 Acres
Tooele County



Legend:

- Renewable Contract No. 2020
- Renewable Contract 2020 Depth Severance
- Land Ownership and Administration**
 - Bureau of Land Management
 - Military Reservations and Corps of Engineers
 - Private
 - State Trust Lands
- Trust Lands Minerals Ownership**
 - All minerals
 - Partial minerals
 - County Line
- State Parks and Recreation
- State Wildlife Reserve/Management Area
- Other State

Data represented on this map is for REFERENCE USE ONLY and is not suitable for legal, engineering, or surveying purposes. Users of this information should review or consult the primary data and information sources to ascertain the usability of the information. The Trust Lands Administration provides this data in good faith and shall in no event be liable for any incorrect results, or any special, indirect or consequential damages to any party arising out of or in connection with the use of the enablely to use the data hereon. Land parcels, base boundaries and associated Trust Lands Administration data layers may have been adjusted to allow for visual "best fit." The Surface Ownership Land Status data (if present) are maintained by the Trust Lands Administration to reflect current trust lands status and surface ownership. Lakes, rivers, streams, highways, roads, county and state boundaries are distributed by the Utah Geospatial Resource Center and/or other sources as specified. Contour lines (if present) were generated from USGS 10 meter DEM. Please Note: While the Trust Lands Administration seeks to verify data for accuracy and content, discrepancies may exist within the data. Acquiring the most updated Trust Lands Administration ownership GIS data may require contacting the GIS staff directly 801-638-5100 or TLA-CIS@utah.gov. The Trust Lands Administration GIS department welcomes your comments and concerns regarding the data and will attempt to resolve issues as they are brought to our attention. Produced: March 25, 2026 - richardswilcox

Document Path: V:\GIS\CIS_Cooper\No_Proj\Projects\2026_EatAnd\Projects\Surface\Surface_Edit.aprx
Coordinate System: NAD 83 UTM Zone 12N

Hillshade - 10-Meter - UGRC - Utah Geospatial Resource Center | UGRC

Questions?

Thank You

The agency requests that the Board approve the OBA and offers the following proposed motion:

“I move to approve the RNBL 2020 - OBA on the terms set forth in the Board Memorandum and to have the agency take all further actions necessary to finalize the transaction.”

Item 10E

AGENDA

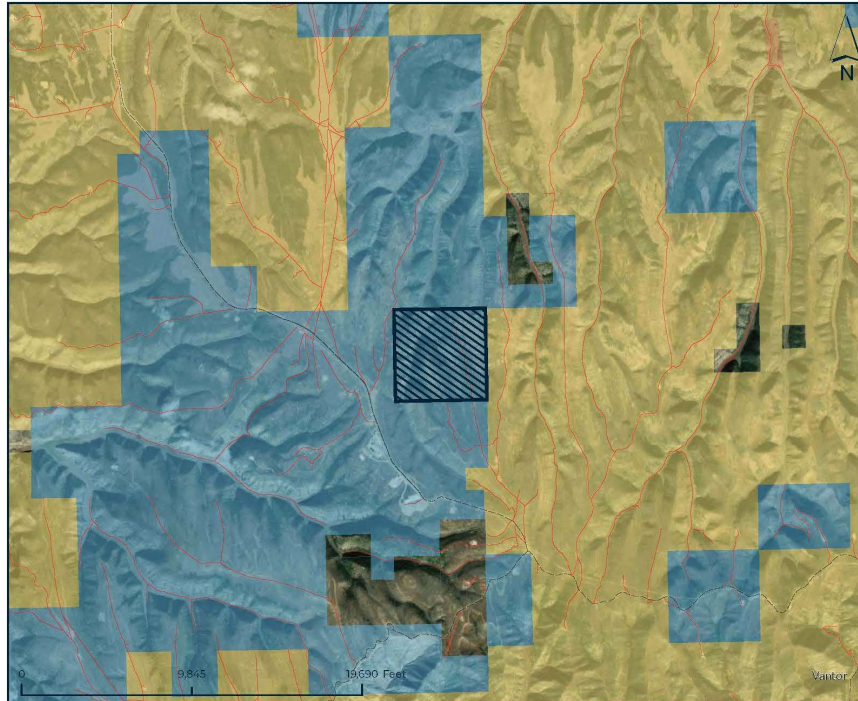
Proposed Other Business Agreement for Bituminous Asphaltic Sands (ML 54697 - OBA) with Silica Energy

Chanse Rinderknecht
Geoscientist and Lease Manager
Energy and Minerals

[Home](#)

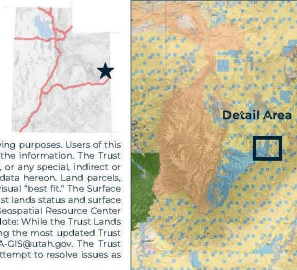


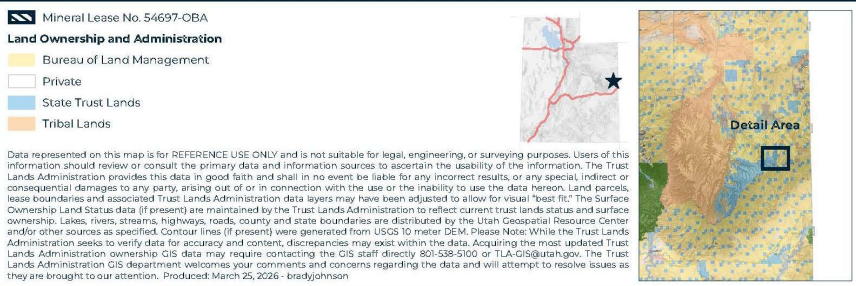
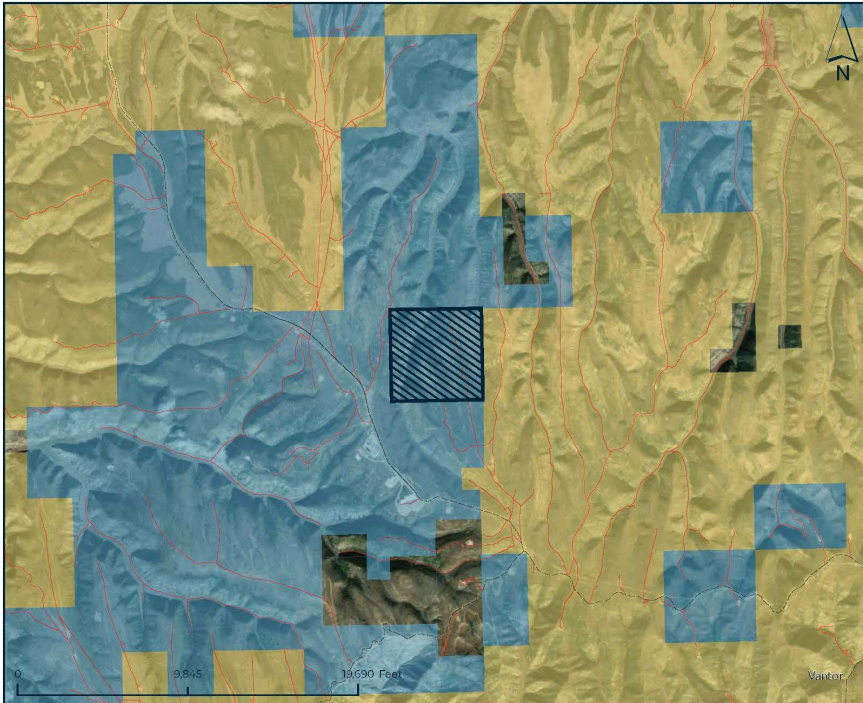
Sunrise pumpjack



-  Mineral Lease No. 54697-OBA
- Land Ownership and Administration**
-  Bureau of Land Management
-  Private
-  State Trust Lands
-  Tribal Lands

Data represented on this map is for REFERENCE USE ONLY and is not suitable for legal, engineering, or surveying purposes. Users of this information should review or consult the primary data and information sources to ascertain the usability of the information. The Trust Lands Administration provides this data in good faith and shall in no event be liable for any incorrect results, or any special, indirect or consequential damages to any party, arising out of or in connection with the use or the inability to use the data hereon. Land parcels, lease boundaries and associated Trust Lands Administration data layers may have been adjusted to allow for visual "best fit." The Surface Ownership Land Status data (if present) are maintained by the Trust Lands Administration to reflect current trust lands status and surface ownership. Lakes, rivers, streams, highways, roads, county and state boundaries are distributed by the Utah Geospatial Resource Center and/or other sources as specified. Contour lines (if present) were generated from USGS 10 meter DEM. Please Note: While the Trust Lands Administration seeks to verify data for accuracy and content, discrepancies may exist within the data. Acquiring the most updated Trust Lands Administration ownership GIS data may require contacting the GIS staff directly 801-538-5100 or TLA-GIS@utah.gov. The Trust Lands Administration GIS department welcomes your comments and concerns regarding the data and will attempt to resolve issues as they are brought to our attention. Produced: March 25, 2026 - bradyjohnson





Plan of Development

Initial Activities, First Two Years, Information to be shared to SITLA

- Literature and Map studies
- Geologic Mapping
- Silica Energy proposes to drill 1 to 32 holes to a depth between surface and 500 feet for the purpose of assessing the rock formations and hydrocarbon content of the land;

Evaluation of Drilling Results

- Silica Energy will evaluate the results of the drilling and prepare a Feasibility Study or Preliminary Economic Analysis.

OBA Terms

Bonus Payment: \$20.00/acre
(\$12,800.00)

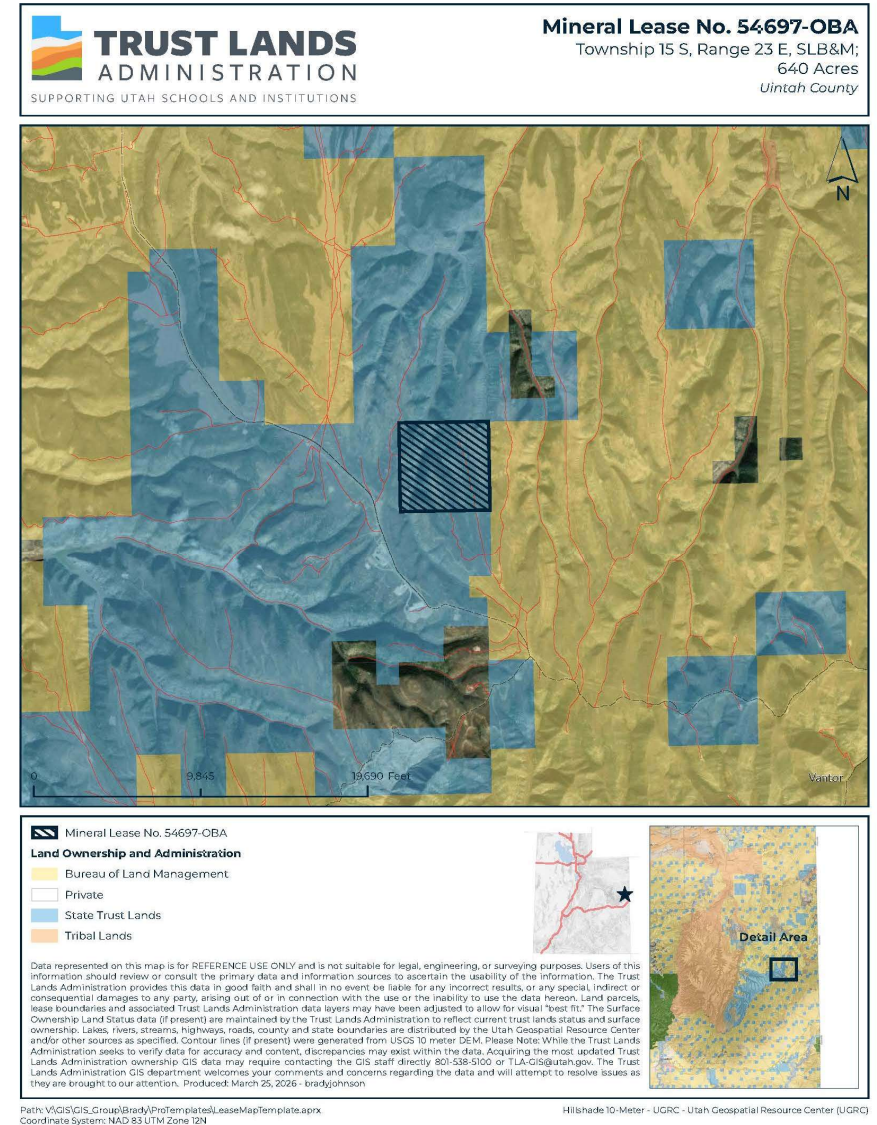
Annual Advance Royalty Payments:
\$6.00 per acre beginning at years 2
through 5;
\$10.00 per acre beginning at years 6
through 10,
\$15.00 per acre thereafter

Royalty: 8.5%



Benefits to TLA

- Continued exploration of TLA Tar Sands deposits
- Silica Energy is committed to drilling and conducting a feasibility study



Questions?

Thank You

The agency requests that the Board approve the OBA and offers the following proposed motion:

“I move to approve the ML 54697 - OBA on the terms set forth in the Board Memorandum and to have the agency take all further actions necessary to finalize the transaction.”

**Item
10F**

AGENDA

Closed Session

[Home](#)



Book Cliffs

Meeting Adjourn

