



Solid Waste Management Plan

SWIFR



WASTE MANAGEMENT
& RADIATION CONTROL



All slide images generated by AI

WMRC Board Working Lunch April 9, 2026



Presentation Overview

- Recap information item presented at the September Board Meeting on requirements for the statewide Solid Waste Management Plan.
- We'll cover key talking points and want to foster discussion.
- Please feel free to interrupt with any questions or comments at any time.
- Ensure strong alignment between the Division and the Board on plan objectives.

SWIFR Grant Overview

- The US EPA Solid Waste Infrastructure For Recycling (SWIFR) grant provides essential funding for the project.
- This funding is provided through the Bipartisan Infrastructure Law.
- The grant directly supports Division and contractor activities.
- The efforts funded by the grant establish a foundation for comprehensive statewide waste planning.



Phase 1: Waste Characterization & Recycling Study

A contractor completed a comprehensive waste characterization study and recycling survey. The report is nearing finalization.

- **Study Focus:** Analyzed the weight and percentage of material types currently landfilled.
- **Recovery Potential:** Identified the recoverable percentage of disposed materials.
- **Public Insight:** Gathered recycling opinions from residents and businesses.
- **Best Practices:** Compared Utah's recycling efforts with national strategies.



Phase 2: Plan Update

- Phase 2 focuses on updating the Solid Waste Management Plan.
- Targeting publication of a current and statutorily compliant plan.

Future Initiatives:

- EPA announced a second round of SWIFR grant funding.
- New funds will be used for promoting residential composting activities.
- Composting project activities are scheduled to commence next year.



Plan Purpose and Mandate:

- Required by Solid and Hazardous Waste Act.
- Serves as an iterative, long term planning tool.
- Outlines the state's comprehensive waste management needs.

Scope and Schedule:

- Updates the 1994 and 2007 plans.
- Scheduled for an update every five years.
- Designed to address new technologies, evolving challenges and opportunities for improvement.



Statutory Requirements for The Plan

Utah Code §§ 19-6-104(3)(b)(i) through § 19-6-104(3)(b)(vi)



- Incorporate the latest existing county waste management plans.
- Estimate solid waste capacity needs for twenty years.
- Assess the ability to minimize waste and recycle.
- Evaluate options for treatment, disposal, and storage.
- Review existing rules for facility siting, design, and operation.
- Research funding alternatives for solid waste management.

Contemporary Waste Concerns

Utah Code § 19-6-104(3)(b)(vii)

Address other concerns the Board finds appropriate to preserve public health and the environment

Potential Areas for Consideration:

- Disaster Debris Management
- E-waste (focusing on fire hazard risks)
- Food Waste and Other Organics (opportunities for composting)
- Liquids Waste and Sludge (addressing limited facilities available)

Board Input Request:

We welcome the Boards input on additional contemporary concerns.

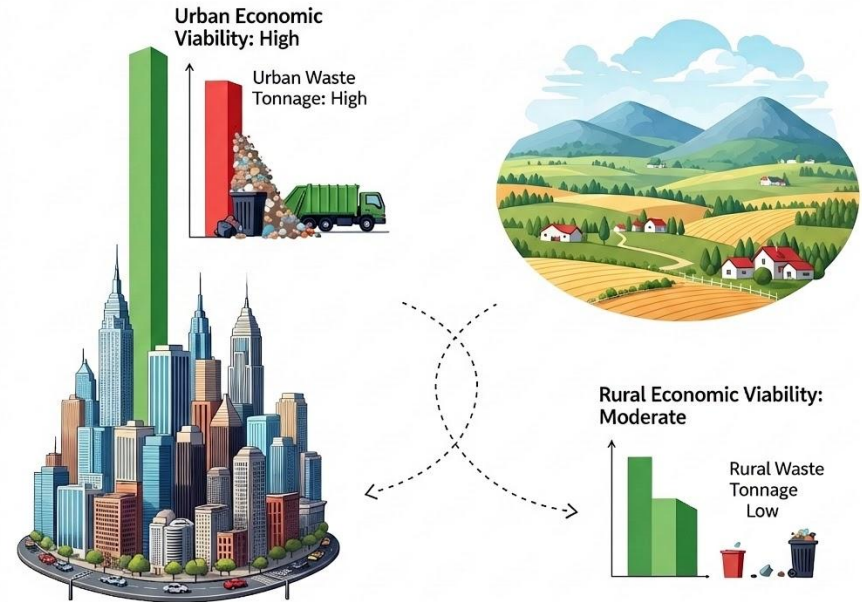


Economics and Tons Disposed

Utah Code §§ 19-6-104(3)(c) and (4)(a)

- Analyze economic viability and the specific needs of population centers.
- Ensure plan addresses the unique waste management needs of both urban and rural areas.
- Determine the types and total tonnage of waste generated statewide.

Economic Viability & Waste Management: Urban vs. Rural





Project Timeline

- SWIFR funding enabled the contracting of a firm for a Plan update.
- The project scope incorporates all mandatory statutory elements.
- A compressed timeline ensures upcoming project goals are met.

Key Milestones

- Final publication-ready files due by mid-July 2026.
- Regional presentations for policymakers are planned for the fall.

Regional Outreach

Outreach presentations will share key insights from the:

- Waste Characterization and Recycling Study.
- Updated Solid Waste Management Plan.
- Focus on addressing unique challenges in rural Utah communities.

All reports will maintain neutral and objective language with a goal to provide data-based information, not directives, offering objective recommendations for enhancing state sustainability efforts.

