



Work Meeting

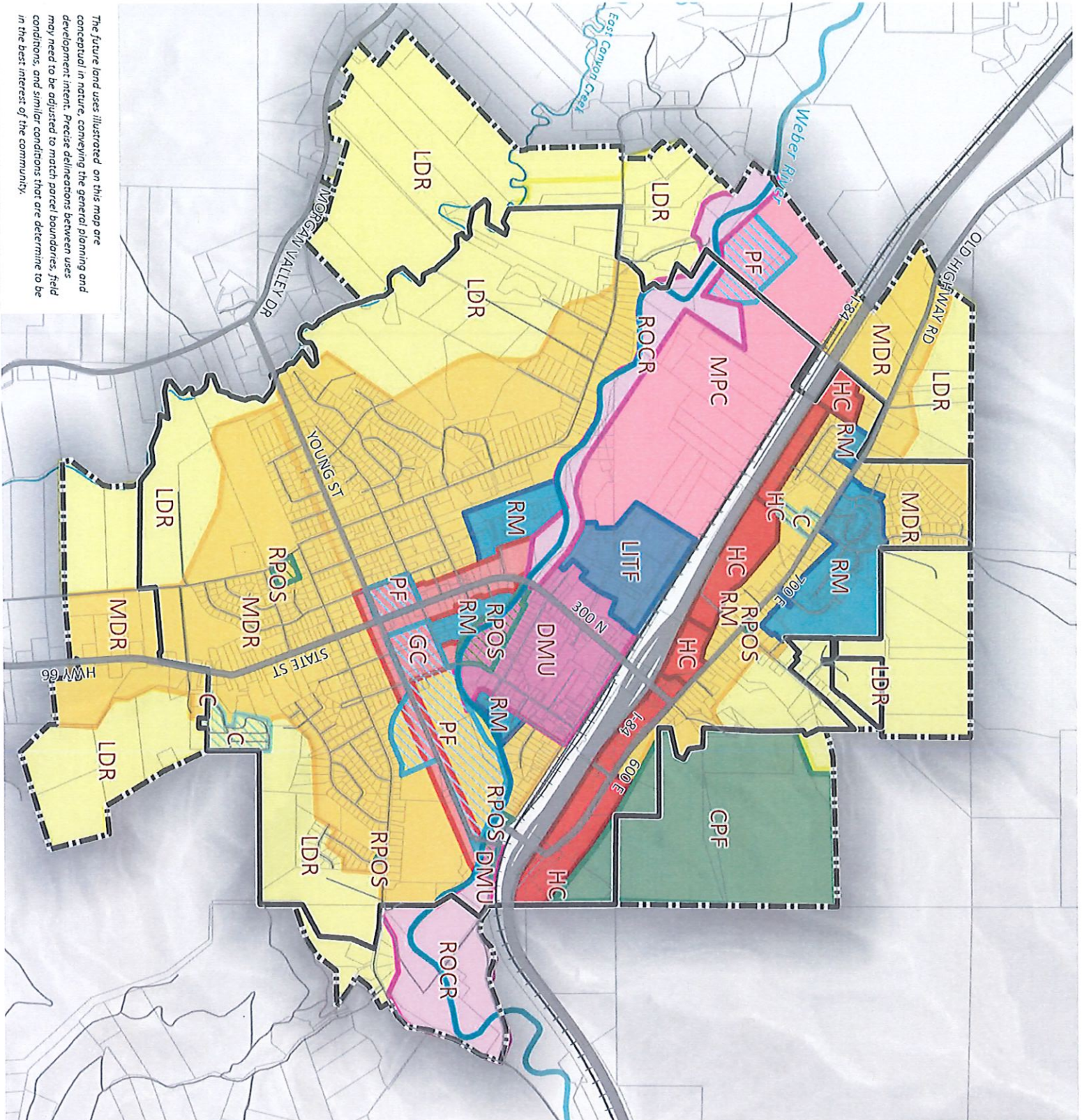
4-14-26

6:00 p.m.

Future Land Use

- Low Density Residential (LDR)
- Medium Density Residential (MDR)
- Residential Mix (RM)
- Master Planned Community (MPC)
- Downtown Mixed-Use (DMU)
- Light Industrial Tech/Flex (LITF)
- General Commercial (GC)
- Highway Commercial (HC)
- Conservation for Public Facilities (CPF)
- Recreation/Parks/Open Space (RPOS)
- Public Facilities (PF)
- Cemetery (C)
- River Oriented Commercial & Recreation (ROCR)

- Existing Railroad
- Morgan City Boundary
- Annexation Declaration Boundary



The future land uses illustrated on this map are conceptual in nature, conveying the general planning and development intent. Precise delineations between uses may need to be adjusted to match parcel boundaries, field conditions, and similar conditions that are determined to be in the best interest of the community.

Morgan City Pay Proposed Pay Scale 2026-2027

Classifications:	Current Pay			Current Range			Tech Net/ Market			Proposed Range				
	Median	% diff.	Min.	Max	Min. Ave	% diff. (+/-10%)	Max Ave.	% diff. (+/-10%)	Min.	% diff (10%)	% Change (+/- 5%)	Max.	% diff. (10%)	% Change (+/- 5%)
City Manager	\$154,148.80		\$188,302.40	\$171,943.67	\$199,422.40	-18%	\$203,486.40	-73%	\$130,000.00	-7%	9%	\$188,500.00	-8%	9%
Assistant City Manager			\$163,987.20	1,512,46.75	\$122,139.20	-16%	\$184,891.20	-28%	\$118,000.00	-3%	12%	\$171,100.00	-8%	12%
Public Works Director			\$150,342.40	\$98,818.20	\$113,152.00	-15%	\$171,038.40	-25%	\$110,000.00	-3%	10%	\$159,500.00	-7%	10%
Administrative Services Manager (Finance Dir./ HR.)			\$150,945.60	\$88,909.60	\$113,214.89	-25%	\$170,144.00	-34%	\$108,000.00	-3%	18%	\$156,600.00	-9%	16%
Administrative Lead (Recorder)	\$71,323.20	-30.39%	\$92,996.80	\$63,682.84	\$71,510.40	-12%	\$106,787.20	-20%	\$68,000.00	-5%	6%	\$98,600.00	-8%	6%
Administrative Lead (Treasurer, HR)	\$88,524.80	-5.00%	\$79,955.20	\$63,682.84	\$71,510.40	0%	\$93,204.80	-1%	\$63,000.00	0%	0%	\$92,340.12	-1%	0%
Administrative Lead (Planning manager)	\$82,784.00	4.37%	\$79,164.80	\$63,682.84	\$71,510.40	0%	\$93,204.80	-1%	\$63,682.84	0%	0%	\$92,340.12	-1%	0%
Administrative Lead (Acct. Payable, utility clerk)	\$71,323.20	-10.99%	\$79,164.80	\$63,682.84	\$71,510.40	0%	\$93,204.80	-1%	\$63,682.84	0%	0%	\$92,340.12	-1%	0%
Administrative Lead (Acct. Receivable, Admin. Asst.)	\$77,054.00	-2.73%	\$79,164.80	\$63,682.84	\$71,510.40	0%	\$93,204.80	-1%	\$63,682.84	0%	0%	\$92,340.12	-1%	0%
Office Specialist (deputy/ hr generalist)			\$58,968.00	\$52,703.04	\$47,153.60	11%	\$71,593.60	10%	\$44,000.00	5%	5%	\$63,800.00	5%	5%
Office Assistant (utility clerk 1+2)			\$51,105.60	\$44,723.24	\$41,953.60	-1%	\$55,161.60	1%	\$40,000.00	6%	4%	\$58,000.00	5%	4%
Office Tech (clerk)			\$49,400.00	\$38,429.30	\$37,564.80	2%	\$51,161.60	1%	\$30,000.00	6%	0%	\$52,467.49	-1%	0%
Planner3			\$75,961.60	\$63,770.68	\$64,000.00	0%	\$93,000.00	-1%	\$63,770.68	0%	0%	\$87,000.00	-2%	3%
Planner2			\$63,356.80	\$57,973.34	\$57,028.80	-4%	\$88,816.00	-8%	\$55,000.00	0%	2%	\$79,750.00	-4%	4%
Planner1			\$56,035.20	\$52,703.04	\$53,664.00	-2%	\$76,440.00	0%	\$47,000.00	1%	2%	\$68,150.00	-3%	2%
Planning Tech.			\$56,035.20	\$46,115.16	\$46,342.40	0%	\$69,908.80	-7%	\$80,000.00	1%	9%	\$116,000.00	-9%	9%
Building Official			\$113,921.60	\$73,015.67	\$84,635.20	-16%	\$125,216.00	-23%	\$68,843.10	-5%	0%	\$99,822.50	-2%	0%
Plans Examiner			\$89,336.00	\$68,843.10	\$65,977.60	4%	\$97,718.40	3%	\$62,584.85	-3%	0%	\$90,748.05	-2%	0%
Building Inspector III			\$80,974.40	\$62,584.86	\$64,667.20	-3%	\$92,352.00	-2%	\$60,000.00	3%	5%	\$87,000.00	5%	5%
Building Inspector I and II			\$72,155.20	\$58,895.13	\$58,136.60	-2%	\$82,368.00	0%	\$60,000.00	3%	5%	\$87,000.00	5%	5%
Power Dept. Super			\$146,036.80	\$108,798.00	\$119,225.60	-9%	\$116,446.40	-14%	\$115,000.00	-4%	5%	\$166,750.00	-6%	5%
Foreman			\$133,473.60	\$90,034.36	\$92,372.80	-3%	\$120,083.60	11%	\$90,000.00	8%	10%	\$145,000.00	-12%	10%
Journeyman 1			\$113,900.80	\$85,642.44	\$80,516.80	6%	\$115,294.40	11%	\$90,000.00	11%	5%	\$130,500.00	12%	5%
Journeyman 2			\$106,204.80	\$81,250.52	\$88,483.20	-9%	\$115,294.40	11%	\$86,000.00	-3%	6%	\$130,500.00	12%	5%
Journeyman 4			\$81,244.80	\$73,564.66	\$81,993.60	-11%	\$106,787.20	0%	\$77,000.00	-6%	4%	\$106,787.20	0%	4%
Apprentice 3			\$81,993.60	\$65,878.80	\$75,587.20	-15%	\$93,204.80	0%	\$70,000.00	-8%	6%	\$93,204.80	0%	6%
Apprentice 2			\$75,587.20	\$60,388.90	\$71,074.00	-3%	\$107,277.00	-1%	\$65,878.80	-7%	8%	\$106,668.76	-1%	0%
Apprentice 1			\$89,003.20	\$73,564.66	\$65,977.60	-9%	\$96,553.60	-14%	\$65,000.00	-2%	7%	\$94,250.00	-2%	7%
Water/Sewer Senior (utility director)			\$85,446.40	\$53,321.48	\$52,582.40	1%	\$76,960.00	1%	\$53,321.48	1%	0%	\$77,316.15	0%	0%
Water/Sewer 4 (field supervisor)			\$65,228.80	\$47,987.19	\$47,985.60	0%	\$69,326.40	1%	\$43,189.94	0%	0%	\$69,581.43	0%	0%
Water/Sewer 3			\$59,508.80	\$43,189.94	\$45,000.00	-4%	\$60,000.00	6%	\$43,189.94	-4%	0%	\$62,625.41	4%	0%
Water/Sewer 2			\$45,769.00	\$43,189.94	\$45,000.00	0%	\$60,000.00	6%	\$43,189.94	-4%	0%	\$62,625.41	4%	0%
Road Department Manager (street super)			\$87,027.20	\$71,917.69	\$71,136.00	1%	\$104,769.60	-1%	\$71,917.69	1%	0%	\$104,280.65	0%	0%
Streets (crew lead)			\$61,963.20	\$58,708.80	\$57,241.60	2%	\$82,804.80	4%	\$58,708.80	2%	0%	\$85,127.77	3%	0%
Streets 3			\$59,176.00	\$52,835.56	\$50,024.00	5%	\$73,923.20	5%	\$52,835.56	5%	0%	\$76,611.56	4%	0%
Streets 2			\$55,640.00	\$47,552.65	\$46,904.00	1%	\$68,640.00	1%	\$48,000.00	2%	1%	\$69,000.00	1%	1%
Streets 1			\$49,504.00	\$42,797.37	\$44,137.60	-3%	\$64,584.00	-6%	\$45,000.00	2%	5%	\$65,250.00	1%	5%
Parks and Cemetery (manager)			\$80,641.60	\$59,290.92	\$59,290.92	0%	\$85,971.83	-6%	\$62,000.00	0%	4%	\$89,900.00	0%	4%
Groundsman 4 (Crew Lead)			\$62,337.60	\$52,835.56	\$53,206.40	-4%	\$76,502.40	0%	\$48,000.00	1%	2%	\$78,300.00	2%	2%
Groundsman 3			\$61,318.40	\$46,115.16	\$48,152.00	-4%	\$70,158.40	-7%	\$44,000.00	0%	4%	\$69,600.00	-1%	4%
Groundsman 2			\$52,187.20	\$42,797.37	\$43,992.00	-3%	\$64,251.20	-5%	\$44,000.00	0%	3%	\$63,800.00	-1%	3%
Groundsman			\$45,718.40	\$38,515.60	\$41,454.40	-8%	\$60,236.80	-11%	\$42,000.00	1%	8%	\$60,900.00	1%	8%
Seasonal			\$16.47	\$16.47	\$16.47	0%	\$25.05	0%	\$16.47	0%	0%	\$25.05	0%	0%
Building Cleaning			\$34,257.60	\$34,257.60	\$34,257.60	0%	\$52,104.00	0%	\$34,257.60	0%	0%	\$52,104.00	0%	0%
Crossing Guard			\$21.47	\$21.47	\$21.47	0%	\$21.55	0%	\$21.47	0%	0%	\$21.55	0%	0%
Elected Officials			\$17.77	\$17.97	\$17.07	0%	\$20.80	0%	\$17.07	0%	0%	\$20.80	0%	0%

948.39
569.14
245.55

\$45 / Meeting Attended